



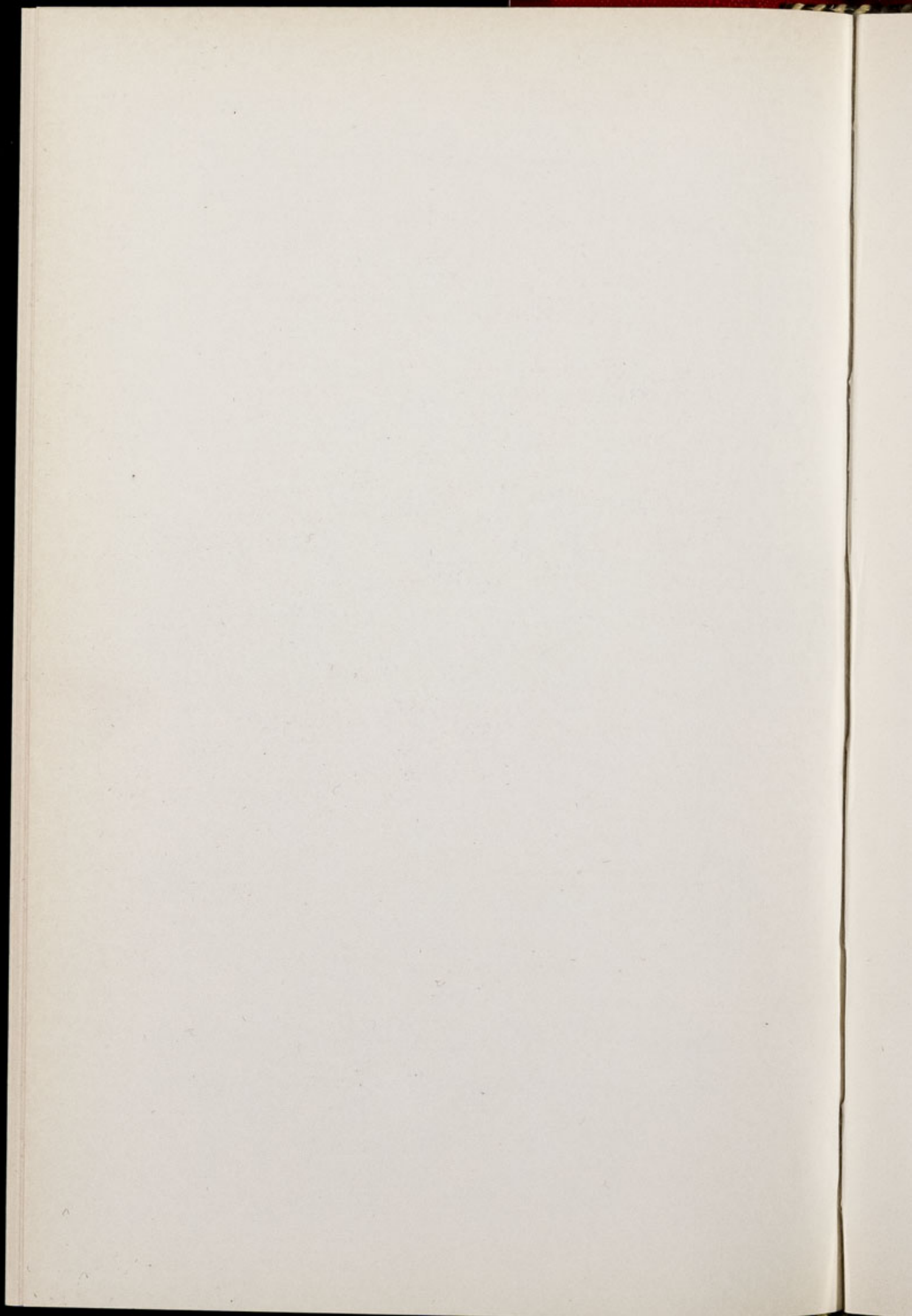
Chester Zoo News

AND GUIDE

THE NORTH OF ENGLAND ZOOLOGICAL SOCIETY
ZOOLOGICAL GARDENS, UPTON-BY-CHESTER

June 1980

Price 15p



The North of England Zoological Society

ZOOLOGICAL GARDENS, UPTON-BY-CHESTER

COUNCIL

PROF. J. O. L. KING, Ph.D., M.V.Sc., B.Sc.(Agric.), F.R.C.V.S., F.I.Biol.)
G. R. PRYOR, C.Eng. (Vice-Chairman) (Chairman)

J. N. WILSON

F. MOSFORD

H. D. COOPER, F.I.M., A.I.B.

A. J. BLAND, Dipl.Arch.R.I.B.A.

R. P. OWEN, A.R.I.C.S.

MRS. B. H. IRVINE

F. S. CARSON, M.C., B.A.(Cantab.)

DR. J. E. D. CHARLES-JONES, M.B., BS., M.R.C.G.P.

DINAH, LADY TOLLEMACHE

W. KELSALL, O.B.E., Q.P.M.

DR. J. R. BAKER, Ph.D., B.V.Sc., M.R.C.V.S.

L. C. YOUNG, B.Sc.(Econ.)

I. YULE, E.R.D., J.P.

DR. M. R. BRAMBELL, Ph.D., M.A., Vet.M.B., M.R.C.V.S. (Director)

CONTENTS

<i>page two</i>	Adoption of Chimpanzees
<i>page six</i>	News from the Elephant House
<i>page seven</i>	Gardening Notes
<i>pages eight/nine</i>	Zoo Guide
<i>page eleven</i>	Births and Arrivals
<i>page thirteen</i>	Latest News
<i>page sixteen</i>	Subscriptions

ILLUSTRATIONS

<i>page three</i>	Adoption of Chimpanzees by H.M.S. Broadsword
<i>page four</i>	"Jubilee" and mother "Judy"
<i>page five</i>	"Jubilee" and mother "Judy"
<i>page twelve</i>	Pere David's Deer
<i>page fifteen</i>	Grant's Zebra mare and foal

COVER

"Sheba" female Indian Elephant

By courtesy of K. W. Green, A.R.P.S.

Annual subscription — Three Pounds, postage paid

Telephone Chester 20106

ADOPTION OF CHIMPANZEES

The City of Chester has adopted H.M.S. Broadsword and by way of reciprocation H.M.S. Broadsword has adopted the group of 17 Chimpanzees (*Pan troglodytes*) at Chester Zoo.

Captain Norman together with Lt.-Commander Lewis, Lt. De Sa, Chief Petty Officers Johnston and Burley and Leading Seaman Moore, spent a day at Chester, when they presented Dr. Brambell (Director) with a cheque for £100, a plaque and an autographed picture of H.M.S. Broadsword. The crew of H.M.S. Broadsword are hoping that they will be able to make an annual contribution.

The picture on page three shows Mr. Peter Wait, Curator of Mammals, and Mrs. Wait, who hand-reared "Gemma", the young Chimpanzee shown. Dr. Brambell and Crew Members are also pictured.

In his reply Dr. Brambell said:—

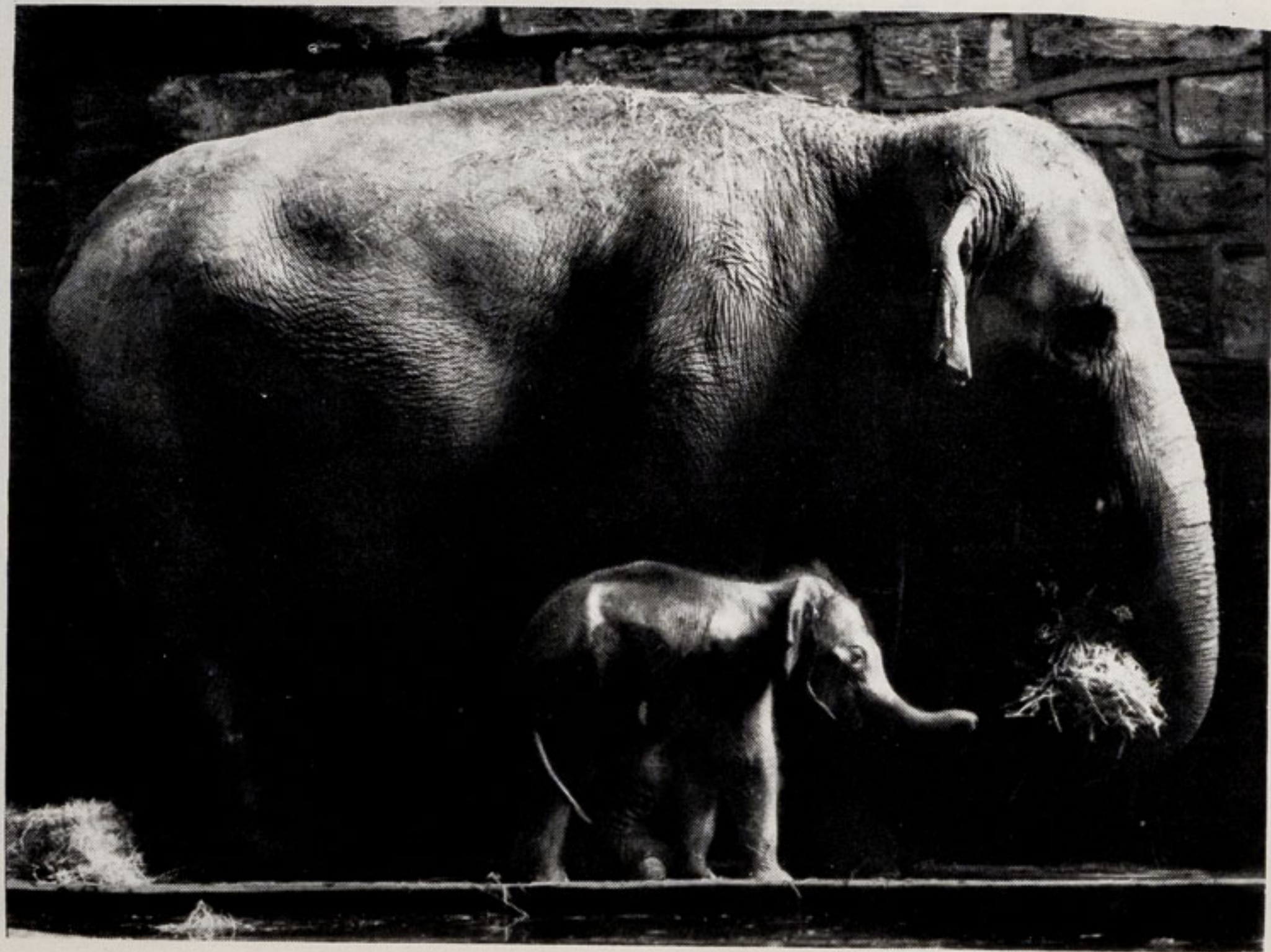
"Although to be associated with the Zoo is fun and always should be, there is a serious side to what we are doing. All the Great Ape species of the world are in danger of losing their homes to Man's expansion and it is up to us to provide a safe haven for them to ensure they live on for our children's children to enjoy. By your generous support you are helping us to achieve our aims, and may I add, by Broadsword's existence and all she represents may our children's children be free to enjoy the Chimpanzees as we do."

The following is an extract from the H.M.S. Broadsword Commissioning Book, referring to the Mayor of Chester being the Admiral of the Dee—a duty first given to them by Edward the Black Prince:—

"And save his Good BROADSWORD, He Weapons Had None . . .' This famous line is not strictly true for Chester as we are fortunate enough to have strong and cherished associations with the Cheshire Regiment, the Cheshire Yeomanry and the County of Chester Squadron R.A.F. but, in 1979, Chester is

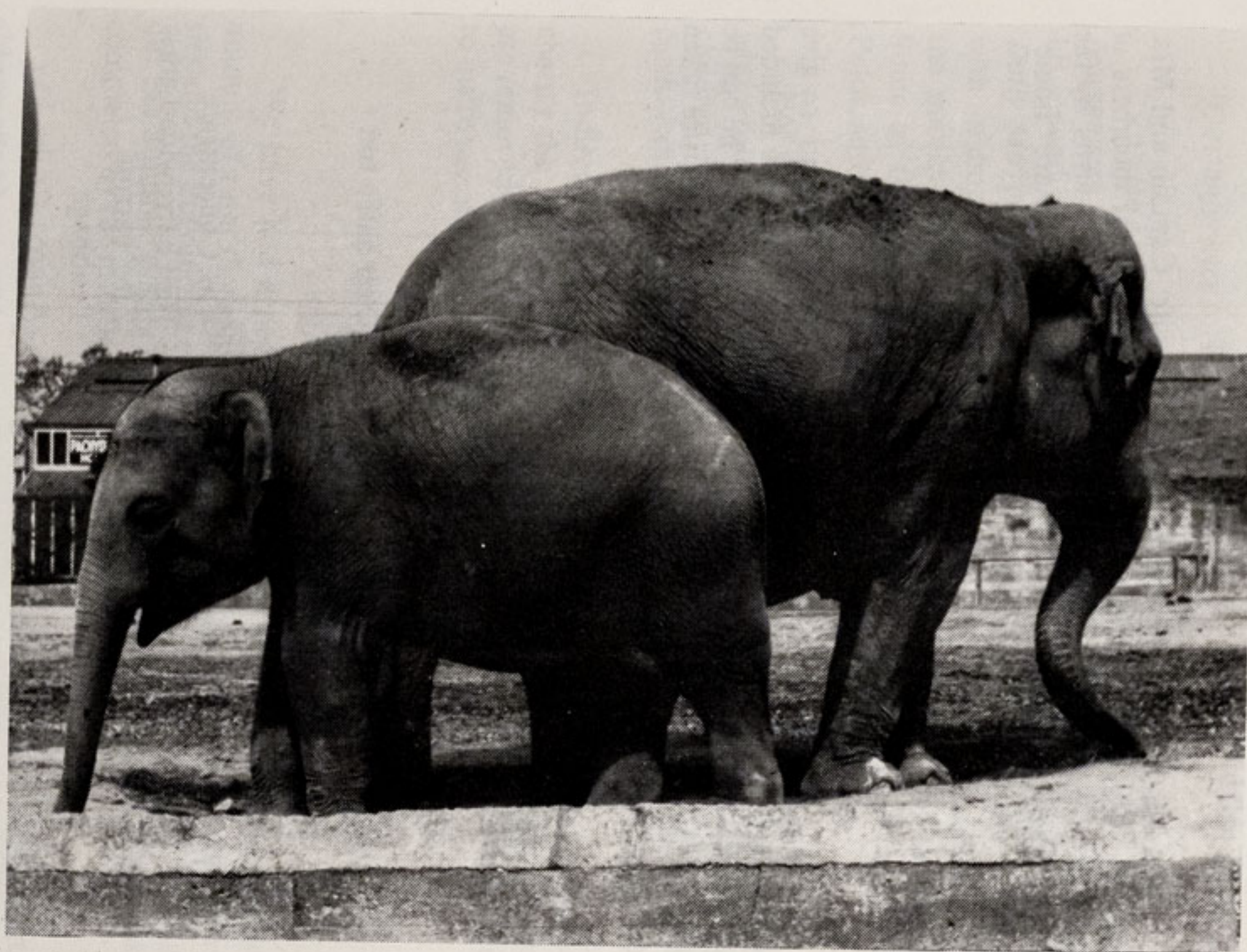


By courtesy of Mel Grundy Photographic Agency
ADOPTION OF CHIMPANZEES



By courtesy of K. W. Green, A.R.P.S.

"JUBILEE" AND MOTHER "JUDY"



By courtesy of K. W. Green, A.R.P.S.
"JUBILEE" AND MOTHER "JUDY"

proud and honoured to strengthen its ties with the Admiralty in its affiliation to H.M.S. Broadsword and they that go down to the sea in ships and occupy their business in great waters. May they sail in safety!"

Early in June the new Captain and his wife Captain and Mrs. Anthony Pearson came to the Zoo along with several members of the ship's company. We look forward to many future visits by the Captain and Crew of H.M.S. Broadsword whenever they are "home" again.

NEWS FROM THE ELEPHANT HOUSE

Young Elephant "Jubilee" was three on 8th May and to give our readers some idea of how much he has grown we have included two pictures of him with his mother "Judy". On page four he can be seen when he was just a few days old. On page five is a picture taken during May 1980.

	FIRST YEAR	AGE THREE
<i>Height</i>	Approximately 30 ins. at topmost point of back	5 ft. 6 ins.
<i>Weight</i>	200 lb. at birth; this had doubled at the age of ten months	Over half a ton
<i>Diet</i>	Milk; by the age of six months solids were being taken	4 lb. Concentrate Half barrowload grass 2 lbs. carrots 1 cabbage Approx. 28 lbs. hay Approx. 6 gallons of water

The diet given for "Jubilee" at age three is the amount he consumes each day! He is still suckling from his mother and may

continue to do so for another year or so. Other measurements which readers may find interesting are:—

Circumference Body—124 ins.

Circumference Front foot—34 ins.

“Jubilee’s” birthday caused quite a stir in local and national newspapers. On his first birthday we received 57 birthday cards; on his second, only two! However, when this story was printed in the *Daily Mirror*, together with a picture of “Jubilee” and the postman with an empty postbag there was a quite unexpected response from the public. Approximately 3,500 cards and letters were delivered. Some of these contained presents such as sticky jam doughnuts, Polos, soft toys and money—one very kind reader sent £10.

We would like to take this opportunity of thanking everyone who wrote or sent cards to us, particularly old-age pensioners, all the children and schools—many of whom sent beautiful home-made cards—and the group of soldiers in Northern Ireland.

Indirectly, the amount of cards sent has been of help to the charity the National Deaf Children’s Society. Used postage stamps are removed from the envelopes and sent to the Society, which is able to make use of them in raising money.

GARDENING NOTES

We have had a period of eight weeks without any appreciable amount of rain. Consequently, the Gardeners had to water the Pansies and the Polyanthus every week. This year, the weather for putting out the Summer plants has been very favourable and the work was completed by the middle of June.

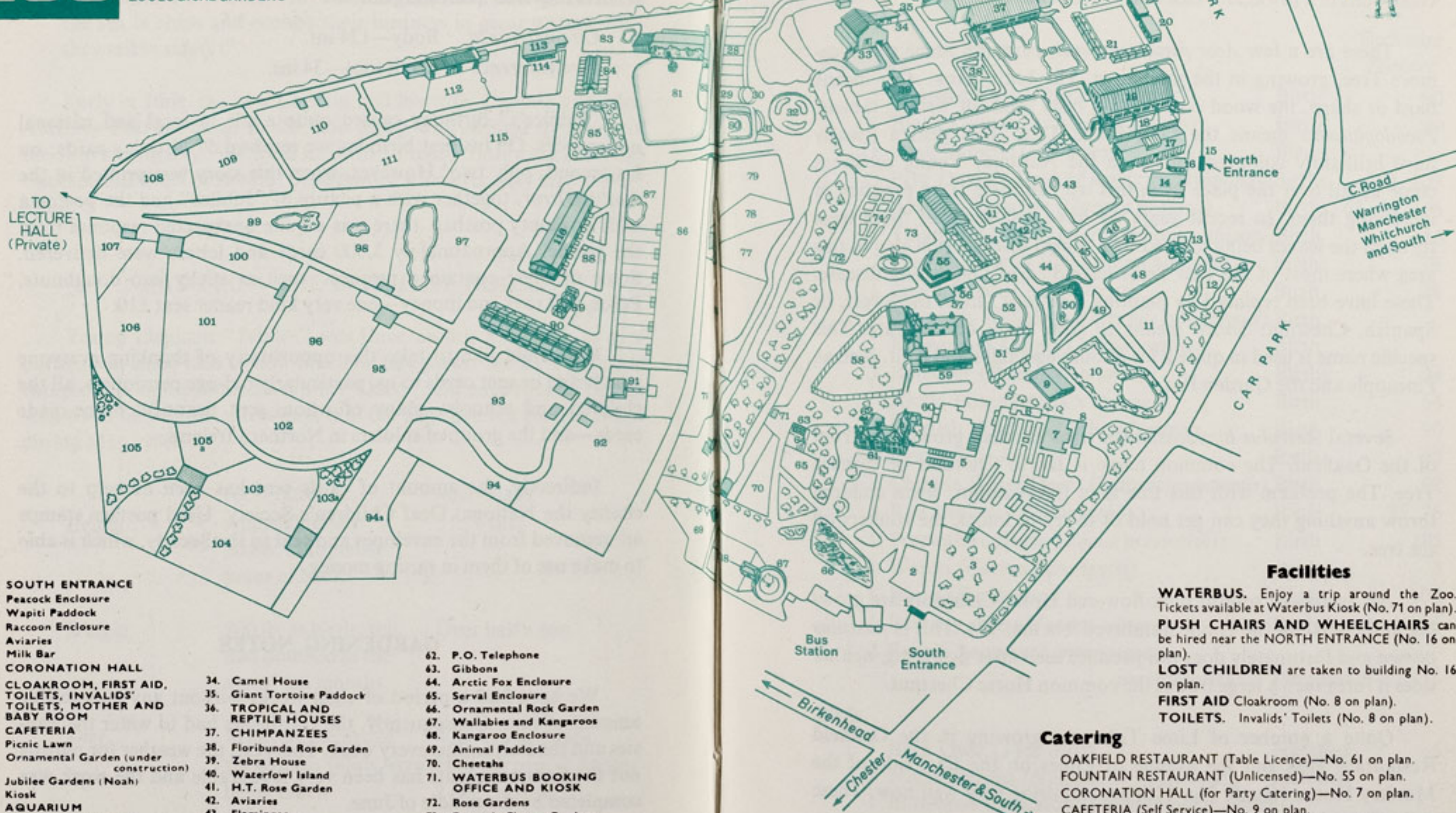
One of the trees growing in front of the Oakfield Restaurant always causes concern every Autumn because the bark peels off it. The tree is *Platanus acerifolia* and the common name is London Plane. *Platanus* is the old Greek name for the Plane Tree, which means broad and refers to the palmate leaves. The tree is about 80 ft. high with an erect trunk. It is fairly fast growing, particularly when

CHESTER ZOO

THE NORTH OF ENGLAND
ZOOLOGICAL SOCIETY
ZOOLOGICAL GARDENS

FOR A COMPLETE TOUR OF THE ZOO — Follow Nos 1-116 from South Entrance,
or Nos. 16-116 from North Entrance then return to Nos. 1-14

**Chester Zoo is Open Daily
from 10a.m.**



1. SOUTH ENTRANCE

2. Peacock Enclosure
3. Wapiti Paddock
4. Raccoon Enclosure
5. Aviaries
6. Milk Bar
7. CORONATION HALL
8. CLOAKROOM, FIRST AID, TOILETS, INVALIDS' TOILETS, MOTHER AND BABY ROOM
9. CAFETERIA
10. Picnic Lawn
11. Ornamental Garden (under construction)
12. Jubilee Gardens (Noah)
13. Kiosk
14. AQUARIUM
15. NORTH ENTRANCE
16. PUSH CHAIRS, WHEEL CHAIRS, LOST CHILDREN
17. PARROT HOUSE
18. Free Flight Aviary
19. APE HOUSE
20. Shop and Kiosk
21. Aviaries and Picnic Lawn
22. CLASSROOM
23. TOILETS
24. TUATARA EXHIBIT
25. Peccaries
26. Birds of Prey Aviaries
27. Condor Aviary
28. Jackal and Hyaena Enclosures
29. Animal Enclosure
30. Porcupine Enclosure
31. Coypus
32. Beavers
33. Giraffe House

34. Camel House
35. Giant Tortoise Paddock
36. TROPICAL AND REPTILE HOUSES
37. CHIMPANZEES
38. Floribunda Rose Garden
39. Zebra House
40. Waterfowl Island
41. H.T. Rose Garden
42. Aviaries
43. Flamingos
44. Waterfowl Enclosure
45. Waterfowl Enclosure
46. Tapir Enclosure
- 47.
48. Sealions
49. Rock Garden
50. Polar Bears
51. Big Cat Enclosure
52. Waterfowl Enclosure
53. Capybara
54. BIRD HOUSE
55. FOUNTAIN RESTAURANT
56. Ape Nursery
57. TOILETS
58. Lions
59. SOUVENIR SHOP
60. TOILETS
61. OAKFIELD RESTAURANT & G. S. Mottershead Memorial Gds

62. P.O. Telephone
63. Gibbons
64. Arctic Fox Enclosure
65. Serval Enclosure
66. Ornamental Rock Garden
67. Wallabies and Kangaroos
68. Kangaroo Enclosure
69. Animal Paddock
70. Cheetahs
71. WATERBUS BOOKING OFFICE AND KIOSK
72. Rose Gardens
73. Fountain Flower Gardens
74. Rose Garden
75. Red Lechwe
76. Red Lechwe
77. Deer or Antelope Enclosure
78. Zebra and Deer Enclosure
79. Zebra and Deer Enclosure
80. Brown Bears
81. ELEPHANTS
82. Hippos
83. Tapirs
84. Small Mammal House
85. Waterfowl Enclosure
86. Ankole Cattle
87. Emus, Cranes and Flamingos
88. Outside Monkey Enclosures
89. Baboon Pens
90. Cat House
91. Tiger Enclosures

92. Antelope Enclosure
93. Antelope Enclosure
94. Reindeer Enclosure
- 94a. Llamas
95. Antelope Paddock
96. Antelope Paddock
97. Waterfowl Enclosure
98. Waterfowl at Axis Deer
99. Waterfowl Enclosure
100. Blackbuck
101. Wallabies
102. Ostrich
103. Wallabies
- 103a. Animal Enclosure

104. Pere David's Deer Paddock
105. Przewalski's Horses
- 105a. Onager
106. Arabian Gazelles
107. Guanaco
108. Bison
109. Pere David's Deer Paddock
110. Prairie Marmots, Alpacas
111. Antelope Enclosure
112. RHINOS
113. TOILETS
114. Mpila Snack Bar
115. Antelope Enclosure
116. MONKEY HOUSE

Facilities

WATERBUS. Enjoy a trip around the Zoo. Tickets available at Waterbus Kiosk (No. 71 on plan).
PUSH CHAIRS AND WHEELCHAIRS can be hired near the NORTH ENTRANCE (No. 16 on plan).
LOST CHILDREN are taken to building No. 16 on plan.
FIRST AID Cloakroom (No. 8 on plan).
TOILETS. Invalids' Toilets (No. 8 on plan).

Catering

OAKFIELD RESTAURANT (Table Licence)—No. 61 on plan.
FOUNTAIN RESTAURANT (Unlicensed)—No. 55 on plan.
CORONATION HALL (for Party Catering)—No. 7 on plan.
CAFETERIA (Self Service)—No. 9 on plan.
MPILA SNACK BAR (Light Meals)—No. 114 on plan.
RAINBOW KIOSK (Picnic Lawn adjoining)—No. 20 on plan.
Undercover facilities for visitors wishing to eat their own food are provided either at the CORONATION HALL No. 7 or the adjoining Snack Bar.

Feeding Times

LIONS—3 p.m. except Fridays
SEA LIONS—3 times daily—2.30 p.m.—3.30 p.m.—4.30 p.m.

ANIMALS MAY BE MOVED FROM TIME TO TIME

young, and is one of the most suitable trees to survive growing conditions in a town.

There are a few *Acer pseudoplatanus*, common name the Sycamore Tree, growing in the same area. The Latin name *Acer* means hard or sharp, the wood once having been used for writing tablets. *Pseudoplatanus* means the false Plane Tree. This genera usually have brilliantly coloured foliage in the Autumn. Young seedlings come up all over the place from this tree, so there is no problem in increasing them. In recent years we have lost some of these trees through the leaves being marred by a fungal disease. It is also in this area where most of the Elm Trees have died of Dutch Elm disease. These have been replaced by planting *Castanea sativa*, the Sweet, or Spanish, Chestnut. *Sativa* means to sow, plant or cultivate. This specific name is used in quite a lot of our vegetables and fruit, such as Pineapple and the Garden Pea.

Several *Aesculus hippocastanum* trees are also growing in front of the Oakfield. The common name is Horse Chestnut or Conker Tree. The problem with this tree is in the Autumn, when children throw anything they can get hold of to try to knock the conkers off the tree.

An avenue of several pink-flowered Horse Chestnuts are growing in the area on the Guide numbered 94a and 104. This is *Aesculus carnea* and fortunately does not produce seed after flowering, neither does it form such a large tree as the common Horse Chestnut.

Quite a number of Lime Trees are growing in the Oakfield Restaurant area and the avenue of Limes on the East side of the Monkey House (Guide No. 116) are maturing very well now. These were planted in January 1964.

Tilia platyphyllus is the proper name for the Lime. *Tilia* is an old Latin name for Lime Tree and *Platyphyllus* means broad-leaved. Lime Trees will stand pruning to keep any special shape, such as a pyramid, and can also be trained to make an archway. They can reach heights of over 100 ft. and the flowers are fragrant.

BIRTHS AND ARRIVALS

Mammals		Enclosure Number
2 Leopard Cats (<i>Felis bengalensis</i>)	Birth	90
1 Black Leopard (<i>Panthera pardus</i>)	Birth	90
11 Soay Lambs (<i>Ovis aries</i>)	Births	
3 Pere David's Deer (<i>Elaphurus davidianus</i>)	Births	104, 109
3 Arabian Gazelles (<i>Gazella arabica</i>)	Births	68, 88, 106
1 Talapoin Monkey (<i>Cercopithecus talapoin</i>)	Birth	116
2 Grant's Zebra (<i>Hippotrigris burchelli</i>)	Births	79
1 Bagot Goat (<i>Capra hircus</i>)	Birth	28
1 Bennett's Wallaby (<i>Macropus rufogriseus</i>)	Birth	
1 Ring-tailed Lemur (<i>Lemur catta</i>)	Birth	
3 Reindeer (<i>Rangifer tarandus</i>)	Births	94
Arctic Foxes (<i>Alopex lagopus</i>)	Birth	64
3 Scottish Wildcats (<i>Felis silvestris</i>)	Birth	90
2 Lynx (<i>Felis lynx</i>)	Birth	90
Chinese Water Deer (<i>Hydropotes inermis</i>)	Birth	92
1 Red Lechwe (<i>Kobus leche</i>)	Birth	75, 76
1 Przewalski Horse (<i>Equus przewalski</i>)	Birth	105
1 Wapiti (<i>Cervus canadensis</i>)	Birth	3
1 Bison (<i>Bos taurus</i>)	Birth	108
1 Barbary Ape (<i>Macaca silvana</i>)	Birth	116
2 Brown Lemurs (<i>Lemur macaco mayottensis</i>)	Purchased	116
Birds		
7 Barn Owls (<i>Tyto alba</i>)	Hatched	5
2 Night Herons (<i>Nycticorax nycticorax</i>)	Hatched	
1 Blue-eyed Cockatoo (<i>Cacatua ophthalmica</i>)	Hatched	17
1 Red-headed Thrush (<i>Garrulax erythrocephalus</i>)	Hatched	
3 Emus (<i>Dromaius novaehollandiae</i>)	Hatched	
20 Bantams	Hatched	
1 Little Owl (<i>Athene noctua</i>)	Presented	
2 Derbyan Parakeets (<i>Psittacula derbiana</i>)	Hatched	



PERE DAVID'S DEER

By courtesy of Peter Wilcock, Daily Mirror

	<i>Enclosure Number</i>
Reptiles	
16 Leopard Geckos (<i>Eublepharis macularis</i>) Hatched	36
4 Brown Tree Snakes (<i>Boiga irregularis</i>) Purchased	36
1 D'alberti's Python (<i>Liasis fuscus albertsii</i>) Purchased	36
Insects	
1 Atlas Moth Bred	36
Fish	
2 Freshwater Stingrays	14
6 Four-eyed Fish	14

LATEST NEWS

A number of births and arrivals have been recorded during the past few weeks. Amongst the list shown on page 11, we are particularly pleased with the birth of two Leopard Cats. The male and female arrived at Chester in September 1978. This is the first time that we have bred these cats.

The Scottish Wildcats that arrived earlier this year produced a litter of three kittens in May. The remaining births in the Cat House were those of one Black Leopard, which is a female, and two Lynx.

Last November, we told readers about "Chester", the Giraffe which had been born with an injured leg. With care and attention from our Vet. and Staff, the youngster was brought to full health. We are now pleased to inform readers that he recently took his first steps in the outside enclosure and has settled down very well. We now have a group of six Giraffes, including the adult male (who was bred at Chester), three adult females and the two youngsters "Chester" and "Patricia". "Chester" is soon to go to Edinburgh Zoo, while we are confidently expecting the arrival of another baby—this time to "Linda".

Last July we reported the birth of ten Arctic Foxes. Litter numbers for this canid are usually limited to three or four pups, but we did mention that occasionally, in favourable conditions, as many as ten could be produced in one litter. A further birth occurred in May—as yet, we are not certain how many are in the litter. Visitors to the Gardens will be able to see these towards the end of June.

Three Arabian Gazelles have been born this year. One of these was found abandoned when it was about two weeks old. He was very weak, but with careful attention he is now fit and well. "Abdul" as he was named, may be seen with "Soraya" in the Nursery Paddock—Guide No. 68

Occasionally, in the past, visitors have found some difficulty in obtaining a good view of the Arabian Gazelles, which tend to keep themselves at the far end of their large enclosure, Guide No. 106. Youngsters that are rejected by females in this paddock are removed for hand-rearing and eventually put into the above-mentioned enclosure (No. 68). From here, four adults have now been installed in an entirely new enclosure, Guide No. 88, which is opposite the outside Monkey Enclosures and Bantams. In this way, we now have a separate breeding group and visitors are able to see youngsters in the first enclosure, and also the adults at close range, therefore giving them some idea of the markings, size and beauty of this rare Gazelle.

The Ring-tailed Lemur born recently was rejected by its mother and was removed for hand-rearing by Nick Ellerton, Assistant Curator of Mammals, and his wife. The youngster, a female, is doing very well, and has started to eat solids.

A pair of Brown Lemurs were purchased recently and have been put into the Monkey House, Guide No. 116. These have not been exhibited at Chester before and we hope to include an article, together with pictures, in a future issue.



By courtesy of K. W. Green, A.R.P.S.

GRANT'S ZEBRA MARE AND FOAL

We are pleased to report the birth of a female Przewalski Horse. This is the second birth to the male (from Marwell) and female (from Whipsnade), which arrived in 1976 to form a new breeding group. The first foal, which was born last year, was a male. Visitors can see them in Enclosure No. 105.

The seven Barn Owls were hatched by one of our females. However, she would not be able to rear all of the chicks, so five of them were removed for hand-rearing by one of our Keepers, Clive Barlow. At first, they needed to be hand-fed four or five times a day, and this was gradually reduced to two feeds.

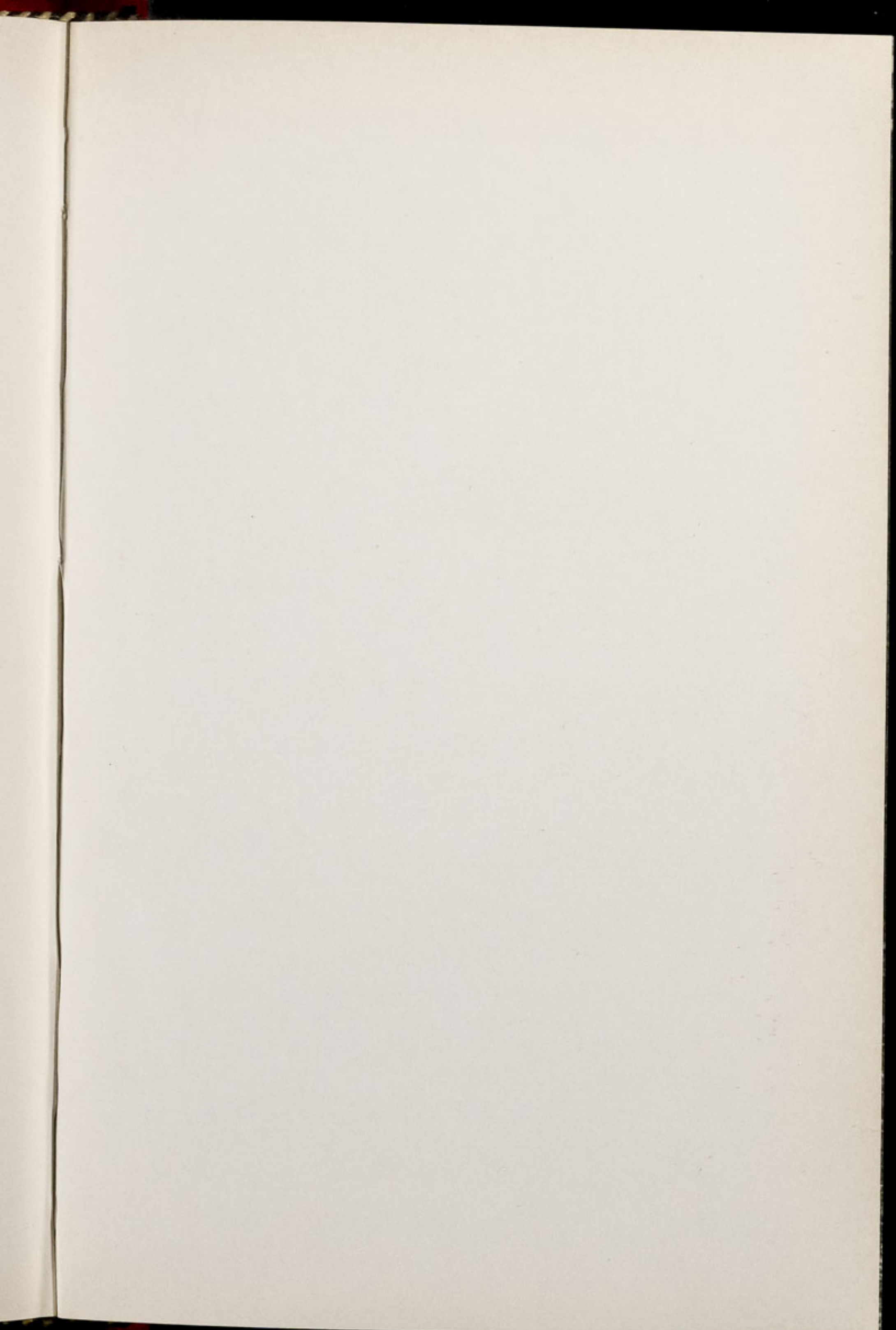
They have now been put into one of our aviaries and are able to feed themselves. The remaining two chicks which were left with the female are also well as she was able to manage the care of these herself. Visitors can see the chicks at Guide No. 5.

STOP PRESS!—"Linda" the Giraffe gave birth to a female on Sunday, 15th June. Mother and baby are both well.

SUBSCRIPTIONS

CHESTER ZOO NEWS is at present being produced every month and readers who would like to receive the magazine regularly can obtain subscription forms at the Souvenir Shops, or the Office. The current charge for 12 issues, including postage, is £3.00 per year.

Completed forms can be handed in to the Souvenir Shops or posted to Chester Zoo News, Chester Zoo, Chester.



Printed in England by
W. H. Evans & Sons Ltd.
Sealand Road Trading Estate
Chester