



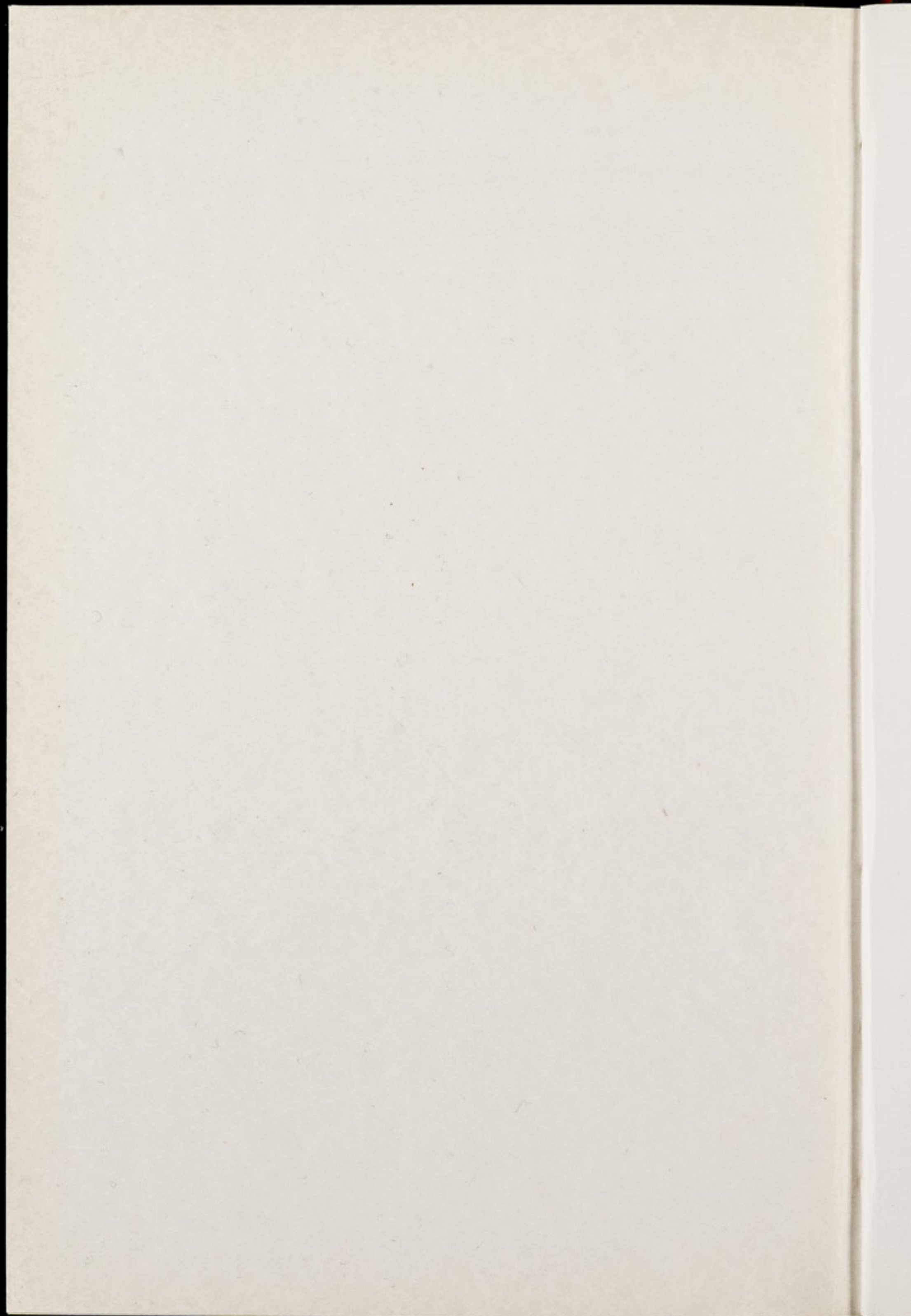
# **Chester Zoo News**

## ***AND GUIDE***

**THE NORTH OF ENGLAND ZOOLOGICAL SOCIETY  
ZOOLOGICAL GARDENS, UPTON - BY - CHESTER**

**December 1975**

**Price 10p**



The North of England Zoological Society  
ZOOLOGICAL GARDENS, UPTON-BY-CHESTER

COUNCIL

PROF. J. O. L. KING, Ph.D., M.V.Sc., B.Sc.(AGRIC.), F.R.C.V.S. (Chairman)  
HER GRACE SALLY DUCHESS OF WESTMINSTER  
H. F. PARKER  
J. N. WILSON  
J. A. KILPATRICK, M.B., Ch.B., F.R.C.S.E.  
F. MOSFORD  
H. D. COOPER, F.I.M., F.S.F. Cert., A.I.B.  
A. K. MCGHIE, A.I.B.  
G. R. PRYOR, C.Eng., Hon.F.I.Prod.E. F.B.I.M.  
A. J. BLAND, Dipl.Arch.R.I.B.A.  
R. P. OWEN, A.R.I.C.S.  
Mrs. B. H. IRVINE  
F. S. CARSON, M.C., B.A., (Cantab.)  
G. S. MOTTERSHEAD, O.B.E., M.Sc., DIRECTOR-SECRETARY

CONTENTS

<i>page two</i>	General News
<i>page three</i>	Mammal Notes
<i>page four</i>	Cover Photograph
<i>page six</i>	Bird Notes
<i>page eight/nine</i>	Zoo Plan
<i>page twelve</i>	Aquarium News
<i>page fifteen</i>	Gardening Notes
<i>page sixteen</i>	Subscription Forms

ILLUSTRATIONS

<i>page five</i>	Pair of young Reindeer
<i>page seven</i>	Red-crowned Mangabey
<i>page eleven</i>	Male Pesquet's or Vulturine Parrot
<i>page thirteen</i>	Red-sided Eclectus Parrot in the nest barrel

COVER

*Common Leopard Cubs*

*By courtesy of K. W. Green, A.R.P.S.*

---

Annual subscription — Two Pounds, postage paid  
Telephone Chester 20106/7/8

### GENERAL NEWS

We have pleasure in recording the following visits to Chester Zoo.

Mr. Eric Hosking, F.R.P.S., F.I.I.P., a photographer of world renown, came recently to the zoo to photograph our collection of birds. In order to carry out indoor photography of birds he takes around with him a large portable aviary, with various coloured scenic backgrounds which are changed according to whatever is most suitable for that particular species. A room was made available to him and the Curator worked out a system of "feeding" Mr. Hosking with pairs of birds. This was carried out by one of the keepers. The birds we used were only those which we considered would not be affected by being caught up and photographed. The portable aviary had continually to be re-set up as the birds were changed, the colour background and the artistic twig and branch arrangements being replaced or re-grouped. In all this Mr. Hosking was assisted by his wife.

In the Kakamega Forest in Kenya, birds are rapidly being destroyed now. Wood is being converted into charcoal to be exported to Arabia, the Arabians having already destroyed all their own forests. Once the natural habitat of birds is destroyed they will become extinct, and Mr. Hosking has undertaken to obtain photographic records before the species become exterminated.

Eric Hosking has always had a love of animals, and as his parents frequently took him to London Zoo as a schoolboy his earliest published photographs were of animals taken there. He acquired his first camera at the age of eight—a Kodak Box Brownie, and his first plate camera within months. He very soon became interested in natural history, especially of birds, and joined Photographic and Natural History Societies at school. Now of course he has the most up-to-date range of photographic equipment that one can acquire in these days. His travels in search of photographs have taken him to many parts of the world.

Eric Hosking is Photographer, Lecturer and Broadcaster, and a Fellow of the Royal Photographic Society. He has illustrated with photographs numerous books on natural history, and belongs to several scientific and photographic societies. He has also published many books on bird photography.

\* \* \*

Mr. Edeuard C. Bisserot, F.R.P.S., who specialises in Wild Life Photography also visited the zoo during the month, and his aim was to study facial expressions of the monkeys. His cameras and other equipment were set up in the Monkey House, and he too had his wife there to assist him with the scenic arrangements. These latter proved fairly complicated so far as the monkeys were concerned, and the Curator devised a system whereby the animals were kept in a small cage within their individual enclosures, whilst the background coloured scenic sheetings were put in place actually inside the enclosure. Mr. Bisserot hoped to have many interesting photographs as a result of his visit.

\* \* \*

Mr. James Serpell of Liverpool University, Department of Zoology, has brought to us nine species of lorikeets, a total of 41 specimens, and these were collected in Australia and Indonesia. Mr. Serpell is studying the behaviour of these birds, and is making various observations here in the zoo. We will keep the collection and will attempt to breed as many birds as possible during the next season.

### MAMMAL NOTES

Our pair of Reindeer (*Rangifer tarandus*) which were bred early in 1974 at the Norfolk Wildlife Park, and came to us in October of that year, are progressing very well. Next year they will be at an age when we can breed from them, and we are hoping that we shall be successful. These animals originate from the Arctic Regions. Although we had them for our Cover Photograph last December, we thought readers would like to have another picture of them in this issue (page 5). These reindeer are kept on specially

prepared gravel and hardcore paddocks at Chester Zoo (Enclosure 103), grassland being too rich for them.

The Reindeer is a horned animal and is the only horned species where both the male and the female carry antlers. The antlers of the females are smaller than those of the males. The hooves of the reindeer are wide-spreading, and this allows them to walk comfortably (in the wild) on soft snow. Their backs are a brownish-mushroom colour, their undersides and rumps being a creamy-white. In their natural state they live on moss and poor quality grass, and on forest buds, mostly of birch trees.

The Lapps, who inhabit the north of Norway, Finland and Russia, depend on these herds of Reindeer. They make many items from their skins, bones and horns; they eat the flesh, and not so long ago drank the milk. People of the north consider the flesh of these animals a delicacy, eating it either roasted or boiled. The reindeer is the only animal which is able to find a living in these sub-arctic regions.

### COVER PHOTOGRAPH

The Cover Photograph is that of two Common Leopard Cubs (*Panthera pardus*). Until quite recently these cubs have been kept in the den by their mother, and they are now out in the open on show to the public.

\* \* \*

Readers will be interested to see the photograph of one of our Red-crowned Mangabeys (*Cercocebus torquatus*) to be seen in the Monkey House. We have one male and one female in the collection, the female having been presented to us in 1960, and the male was received in exchange in 1966. This photograph shown on page 7 was taken by Mr. Kenneth W. Green.

\* \* \*

One male and two female Grevy's Zebras (*Equus grevyi*) have been received on deposit from Bristol Zoo. Our stock of this species of zebra is now eight.



*By courtesy of K. W. Green, A.R.P.S.*

PAIR OF YOUNG REINDEER (*Rangifer tarandus*)

**BIRD NOTES**

Readers will be interested to hear of our pair of Pesquet's Parrots which we acquired in October 1974. The Pesquet's or Vulturine Parrot (*Psittrichas fulgidus*) is found in the New Guinea Forest from a height of 2,500 ft. to 4,000 ft., and on several occasions when our Curator was fortunate enough to be in New Guinea he found that in some localities the Vulturine Parrot was common and rather conspicuous. These birds were seen singly, in pairs, or in small parties in tree-tops or flying over the forest. The outline in flight is a short tail, broad wings, and long slender outstretched head and neck. Short, quick wing beats are occasionally interrupted with short glides, and their call is a hoarse "aar" or "caar", sometimes uttered continually whilst on the wing. The Curator saw wandering Pesquet's Parrots in three locations in New Guinea, firstly in the Hunstein Mountains and secondly in the Victor Emanuel Mountains, in Western New Guinea. In these three locations the birds were observed feeding on large flowers and figs, and the soft pulp of other fruit trees.

The pair of Pesquet's Parrots which we have in the zoo were accommodated in an outside aviary early on in the year, and they were offered a large trunk of a tree, about 8 ft. in height, the interior being completely rotten. The male and female excavated a nesting hole which was some 5 ft. in depth with a chamber going off at right-angles. The female incubated for 31 days and then deserted the nest. We found two eggs, one clear and the other with a dead chick in the shell. The eggs are being presented to the British Museum of Natural History, to be housed in the national collection. They have not been described scientifically, and will be weighed and measured. We have some information which we will be able to write up on the display and breeding behaviour of Pesquet's Parrots.

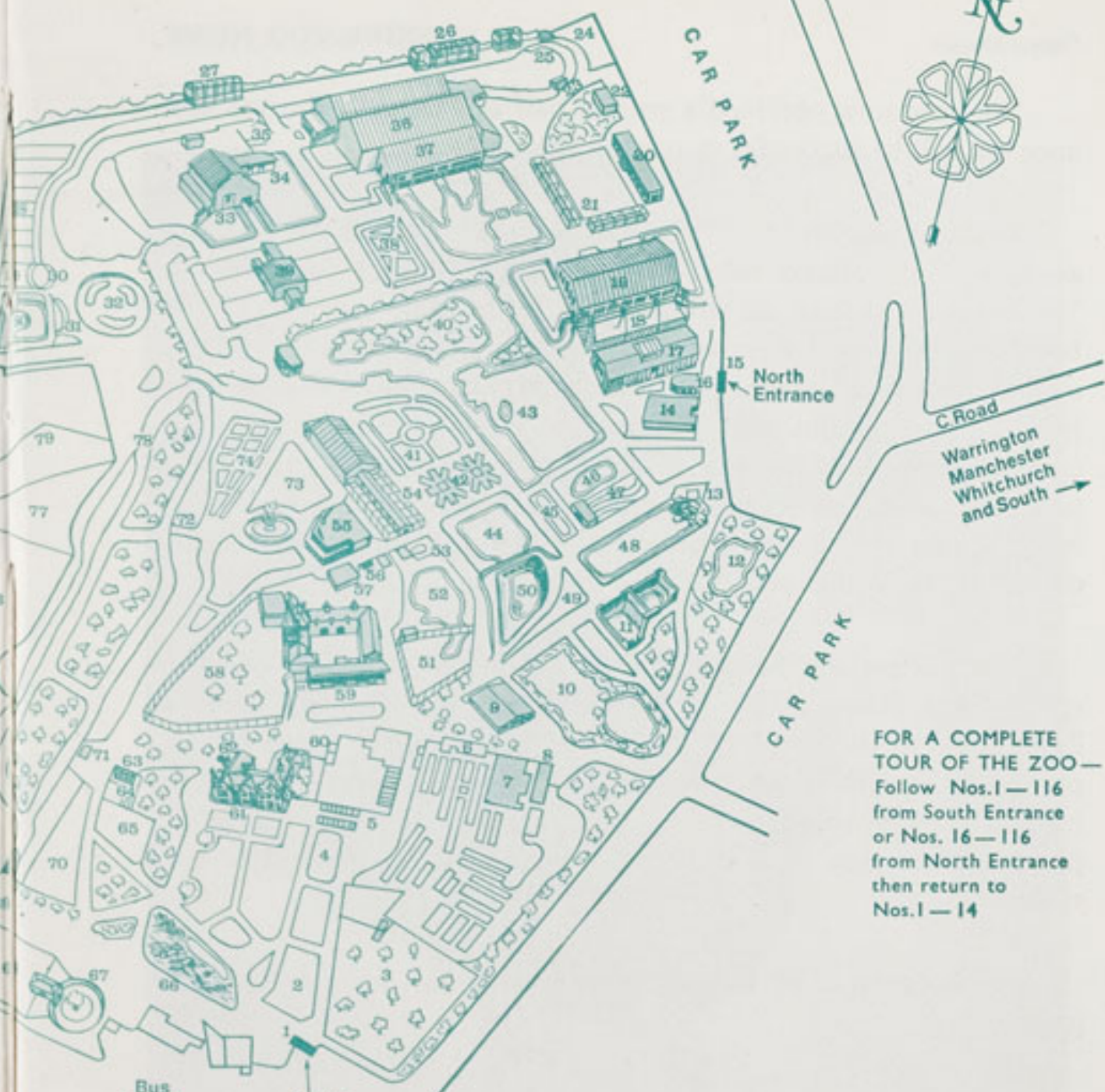
In captivity Pesquet's Parrots are fed on long-grained boiled rice, a nectar mixture and various tropical fruits. They are fond of melon, pawpaw, mangos and pomegranates. These parrots also eat a large quantity of bananas, and these are hung whole in the aviary, the birds stripping out the contents. They also have vitamins added to their diet.



*By courtesy of K. W. Green, A.R.P.S.*

RED CROWNED MANGABEY (*Cercocebus torquatus*)

To LECTURE HALL  
(Private)



CAR PARK

North Entrance

C Road

Warrington  
Manchester  
Whitchurch  
and South →

CAR PARK

FOR A COMPLETE  
TOUR OF THE ZOO—  
Follow Nos.1—116  
from South Entrance  
or Nos. 16—116  
from North Entrance  
then return to  
Nos.1—14

**1. SOUTH ENTRANCE**

- 2. Peacock Enclosure
- 3. Wapiti Paddock
- 4. Lesser Pandas
- 5. Aviaries
- 6. Milk Bar
- 7. CORONATION HALL
- 8. CLOAKROOM, FIRST AID, TOILETS, MOTHER AND BABY ROOM
- 9. CAFETERIA
- 10. Picnic Lawn
- 11. Bears
- 12. Sunken Garden
- 13. Kiosk
- 14. AQUARIUM
- 15. NORTH ENTRANCE
- 16. PUSH CHAIRS, WHEEL CHAIRS, LOST CHILDREN
- 17. Parrot House
- 18. Free Flight Aviary
- 19. APE HOUSE
- 20. RAINBOW CAFE AND SHOP
- 21. Aviaries and Picnic Lawn
- 22. TOILETS
- 23. Tuatara Exhibit
- 24. Peccaries
- 25. Waterbus Halt
- 26. Birds of Prey Aviaries
- 27. Condor Aviary
- 28. Jackal and Hyena Enclosures
- 29. Animal Enclosure
- 30. Porcupine Enclosure
- 31. Coypus
- 32. Beavers
- 33. Giraffe House

- 34. Camel House
- 35. Waterbus Halt
- 36. TROPICAL, NOCTURNAL AND REPTILE HOUSES
- 37. CHIMPANZEES
- 38. Floribunda Rose Garden
- 39. Mammal House
- 40. Gibbon Island
- 41. H.T. Rose Garden
- 42. Aviaries
- 43. Flamingos
- 44. Waterfowl Enclosure
- 45. Waterfowl Enclosure
- 46. Waterfowl Enclosure
- 47. Penguins
- 48. Sealions
- 49. Rock Garden
- 50. Polar Bears
- 51. Cat Enclosure
- 52. Waterfowl Enclosure
- 53. Anteaters
- 54. BIRD HOUSE
- 55. FOUNTAIN RESTAURANT
- 56. Ape Nursery
- 57. TOILETS
- 58. Lions
- 59. SOUVENIR SHOP
- 60. TOILETS
- 61. OAKFIELD RESTAURANT

- 62. P.O. Telephone
- 63. Gibbon Pen
- 64. Animal Enclosure
- 65. Cheetahs
- 66. Ornamental Rock Garden
- 67. Malayan Bears
- 68. Animal Enclosure
- 69. Aviary
- 70. Wallabies
- 71. WATERBUS BOOKING OFFICE AND KIOSK
- 72. Waterbus Halt
- 73. Fountain Flower Gardens
- 74. Rose Garden
- 75. Red Lechwe
- 76. Red Lechwe
- 77. Deer or Antelope Enclosure
- 78. Waterbus Halt
- 79. Zebra and Deer Enclosure
- 80. Kamchatka Bears
- 81. ELEPHANTS
- 82. Hippos
- 83. Tapirs
- 84. Small Mammal House
- 85. Waterfowl Enclosure
- 86. Ankole Cattle
- 87. Emus and Cranes
- 88. Stork Enclosures
- 89. Baboon Pens
- 90. Cat House
- 91. Lions and Tigers

- 92. Antelope and Ostrich
- 93. Antelope Enclosure
- 94. Antelope Enclosure
- 95. Zebras
- 96. Llamas
- 97. Waterfowl Enclosure
- 98. Wallabies and Waterfowl
- 99. Waterfowl Enclosure
- 100. Blackbuck
- 101. Wallabies
- 102. Animal Paddock
- 103. Animal Paddock
- 104. Animal Paddock

- 105. Proposed New Bear Enclosures
- 106. Arabian Gazelles
- 107. Animal Paddock
- 108. Bison
- 109. Pere David's Deer Paddock
- 110. Prairie Marmots, Alpacas
- 111. Antelope Enclosure
- 112. RHINOS
- 113. TOILETS
- 114. Mpila Snack Bar
- 115. Antelope Enclosure
- 116. MONKEY HOUSE

**ANIMAL FEEDING TIMES:**

- LIONS—3 pm except Fridays
- BEARS—3-15 pm
- POLAR BEARS—4 pm
- SEA LIONS 3 times daily—  
2-40 pm, 3-40 pm, 4-40 pm

Animals may be moved from  
time to time.



We have now obtained a second pair of Pesquet's Parrots and hope we will be successful in rearing this species.

In the Wahgi Valley of New Guinea, the Pesquet's Parrot plays an important cultural role. This bird is an integral part of the "bride price", that is, the tribute given to the male members of the bride's family by the prospective groom. Also included in the tribute are a great number of other things such as money, bird of paradise feathers and pigs. The parrots' value rests in the deep red colouration of the feathers of the upper tail coverts, abdomen, undertail, outer secondaries and secondary wing coverts which are much sought after for the purpose of making the ceremonial head-dresses of the Wahgi people.

The parrots are not killed, but periodically plucked of their red feathers. However, over a long period of time this treatment is detrimental to the health of the birds. Because of the value placed on the feathers, the price of the birds among the natives is relatively high. This flourishing trade in living birds is the only factor at present which may have some effect on the future survival of the species.

A photograph of our male Pesquet's Parrot is shown on page 11.

\* \* \*

Red-sided Eclectus Parrots (*Lorius pectoralis*) are on the nest at the moment. The nest is a wooden barrel which has an entry and exit hole, and the unique photograph on page 13 shows one of the birds actually inside the nest on the lining of wood chips which these birds favour. The female incubates and is fed on the nest by the male. The incubation period lasts about four weeks, and the young birds are cared for by both parents. The chicks leave the nest after about eight weeks. Successful breeding in captivity is good but the birds need careful attention and require to be looked after. We have successfully reared six young out of four breedings. The clutch of these birds is usually two eggs.

These are large, handsome birds and their distribution is New



*By courtesy of K. W. Green, A.R.P.S.*

MALE PESQUET'S OR VULTURINE PARROT (*Psittichas fulgidus*)

Guinea, the Moluccas, Solomon Islands and Australia. They are also to be found on a small part of Cape York Peninsula.

In their natural habitat the Red-sided Eclectus Parrots feed on fruits, nuts, seeds and nectar. They are to be found in thick cover, mostly in rain-forest, over much of their range, but are to be seen in open country whilst moving from one area to another. They feed in parties in tree-tops. Their wing-beats are deliberate and their flight is rather slow. There are brief periods of gliding. These parrots do not raise their wings above body level and for this reason are easily distinguished in flight in the wild.

Both male and female are brilliantly coloured. Immature birds are similar to the adults, but are less colourful.

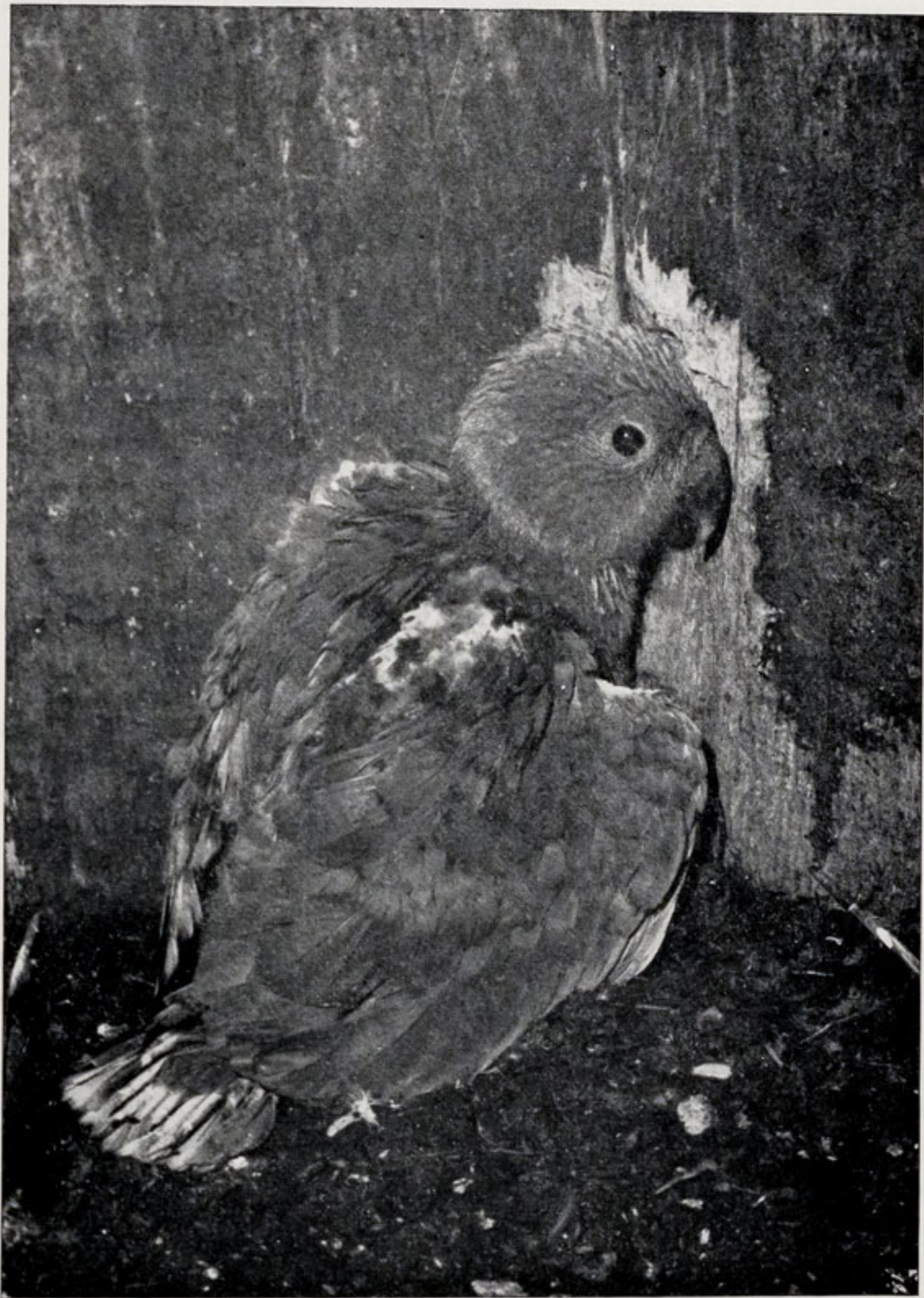
\* \* \*

A brown Pelican (*Pelecanus occidentalis*) has been received; it is being confined in a separate aviary in our Temperate Bird House for a few weeks so that we can find out whether it is fit and well enough to be put with our other pelicans. This species is to be found from the southern coastal regions of west Canada to southern South America, and in the West Indies. In the wild it fishes exclusively in salt water and can dive from a height of more than 60 ft. These birds have air sacs in the breast which act as shock absorbers as they reach the water surface.

### AQUARIUM NEWS

Another Catfish has been acquired to add to our collection. This is of the family *clariide*, and is the *Heteropneates fossilis*. These Catfishes are freshwater tropical, ranging from Ceylon to Eastern India and Burma, and South Vietnam. They grow to a length of about 28 ins.

In the male the spines of the dorsal and pectoral fins are equipped with poisoned glands and a wound from these fins can induce permanent or temporary paralysis. Fishermen are therefore wary of this Catfish, and if found in their nets take the precaution of cutting out that section of the net with the fish in it.



*By courtesy of K. W. Green, A.R.P.S.*

INSIDE THE NEST-BOX OF THE RED-SIDED ECLECTUS PARROTS (*Lorius pectoralis*)

The *Heteropneates fossilis* is a uniform grey-brown to olive-green colour, sometimes dark-brown to black. It has two pale yellowish rainbow bands and numerous black spots on the flanks. The fins are often fawn-coloured, and the eyes are yellow.

\* \* \*

Twenty new Dwarf Rainbow Cichlids (*Pelmatochromis kribsensis*) have recently been introduced to the collection. These are full-grown, being  $1\frac{1}{2}$  ins. long. As described in our May issue, Dwarf Rainbow Cichlids are a very dark olive colour through to blue, to blue-green, with irridescent green-silver to pale blue spots. They are freshwater tropical, existing in the coastal regions of West Africa, extending from Libya southwards to the Congo.

\* \* \*

A new young Scorpion Fish has been introduced to the collection and this is three-quarters grown. It will grow to  $\frac{5}{6}$  ins. in length. Scorpion fishes are tropical marine and the species we already have is the *Pterois lunulatus* which is a large one. The new one, *Pterois volitans*, is at this stage about 1 in. long and will grow to approximately 10 ins. in length. "*Volitans*" has much longer fins than the "*lunulatus*".

\* \* \*

A Red Snapper (*Lutjanus sebae*) was acquired recently. Snappers are from the Indo-Pacific as far south as Africa. The colouration is red and white stripes, there being a red stripe running down the front of the face and one along the middle of the back; there is also a red stripe along the base of the tail.

At present the new Snapper is 1 in. long and is eating very well. In the wild they grow rapidly to a length of between  $\frac{2}{3}$  ft. The Red Snapper is at present in a tank with the Clown Fishes, and when it is sufficiently grown will be housed with the larger marine fishes.

Snappers are very widespread in the Pacific Ocean, but there are very few in the Hawaiian Islands, these fishes having been

"introduced" there. They are mostly inshore fishes, inhabiting the shallow waters of the coasts, but some Snappers can be found in deep waters.

### GARDENING NOTES

To continue with the notes on some of the flowering shrubs which can be seen growing in the zoo grounds, the Hypericums are a really useful group of shrubs, flowering from June to October. Being shallow-rooted they grow best in moist soils and are practically evergreen in mild winters. Pride of place must go to the variety *Hidcote*, which is very fine. It is rather taller than most, growing to two feet in height, and it has large golden-yellow flowers. *Calycinum* (Rose of Sharon) is an invaluable shrub for ground cover and for massing in shady places, and this has large terminal yellow flowers. The variety *Elstead* is an erect free-growing form and is best known for its brilliant salmon-red fruits in autumn. All these varieties can be pruned back fairly hard in the spring.

Berberis is a large and varied group of shrubs which provides berries and coloured foliage in the autumn, and they do well in most soils. The only pruning necessary is to thin out over-crowded growths and to cut back to keep the shrubs to the size required.

The variety *Wilsonii* is a dwarf compact form with varying shades of berries, and this has a fine autumn colour. It is most useful to us (apart from being very attractive), as we plant it as a barrier to stop children from running through the shrubs and getting too close to the animals and other areas where we do not want them to go. It has very sharp thorns which the children will not face. We have planted large numbers of these shrubs throughout the zoo, growing them from seed taken from existing plantings. We always have 500 or so in our nursery to use for future plantings.

There are several varieties of *Berberis thunbergii* and all are excellent. These are natives of Japan. They have golden flowers on pendulous branches, lovely autumn berries of varying shades, and fine autumn foliage.

To mention a few of these we have *Atropurpurea* which has rich bronze foliage from spring until the autumn. *Atropurpurea superba* is an improved type of the above. *Nana* is dwarf-growing, suitable for the rock garden, as is *Nana aurea* which is a yellow leaf-form of this. Evergreen varieties include *aquifolium* which has large shiny leaves and pale yellow flowers. This is one of the best for planting under trees. The berries are good for the birds.

*Darwinii* is another excellent shrub, always covered with fine flowers each year followed by bluish berries. *Stenophila* is again a good one, and it has long graceful branches covered in May with bright orange flowers. *Japonica bealei* is an outstanding shrub, differing from most varieties as it has larger and longer leaves and in the early spring long sprays of fragrant yellow flowers. This one will grow to four or five feet.

We have described but a few of the best of the *Berberis*. There are many more, and they are all worthy of a place in our gardens.

### SUBSCRIPTION FORMS

New readers of the CHESTER ZOO NEWS who would like to receive the magazine regularly may be interested to know that subscription forms can be obtained from the souvenir shops. An annual subscription (12 issues) costs £2.00, postage paid, which can either be handed over the counter at the shops or posted with the completed form to the Director-Secretary, Chester Zoo. Chester.

**We would like to wish all our readers a  
Merry Christmas**



The following notice is displayed on several boards in the grounds  
Please comply with it at all times

### FEEDING OF ANIMALS AND BIRDS

**IT IS AN OFFENCE** for any member of the public to offer food of any description to any Animal or Bird in Chester Zoo.

This regulation is made for the sake of the health of the Animals and Birds. Since the **NO FEEDING** rule was introduced, the number of deaths has dropped appreciably and sickness due to wrong feeding has been virtually eliminated.

What you may be offering to an animal may only be a sweet or an inoffensive piece of bread, but it can mean a death sentence for the animal. For example, a cough drop, which may relieve your cough, can cause instant death to many Animals and Birds in the Zoo.

You must not lose sight of the fact that you are only one of over a million visitors who visit the Zoo annually. If for instance an elephant had one bun from only one tenth of a day's visitors during the summer, it would eat between three and four thousand. You can guess the result.

We realise what a temptation it is for visitors, particularly children, to feed our Animals and Birds and this is why we invite members of the public to be present at the official feeding times.

This is a polite warning to you, asking you not to feed the animals. If you ignore it, the Keepers are authorised to ask you to leave the Gardens.

**If you really love Animals and Birds, you will appreciate the wisdom of the ruling — No feeding by members of the public.**

---

**PLEASE HELP US TO KEEP OUR COLLECTION OF  
ANIMALS NOT ONLY ALIVE BUT IN FIRST CLASS  
CONDITION**

Printed in England by  
W. H. Evans & Sons Ltd.  
Sealand Road Trading Estate  
Chester