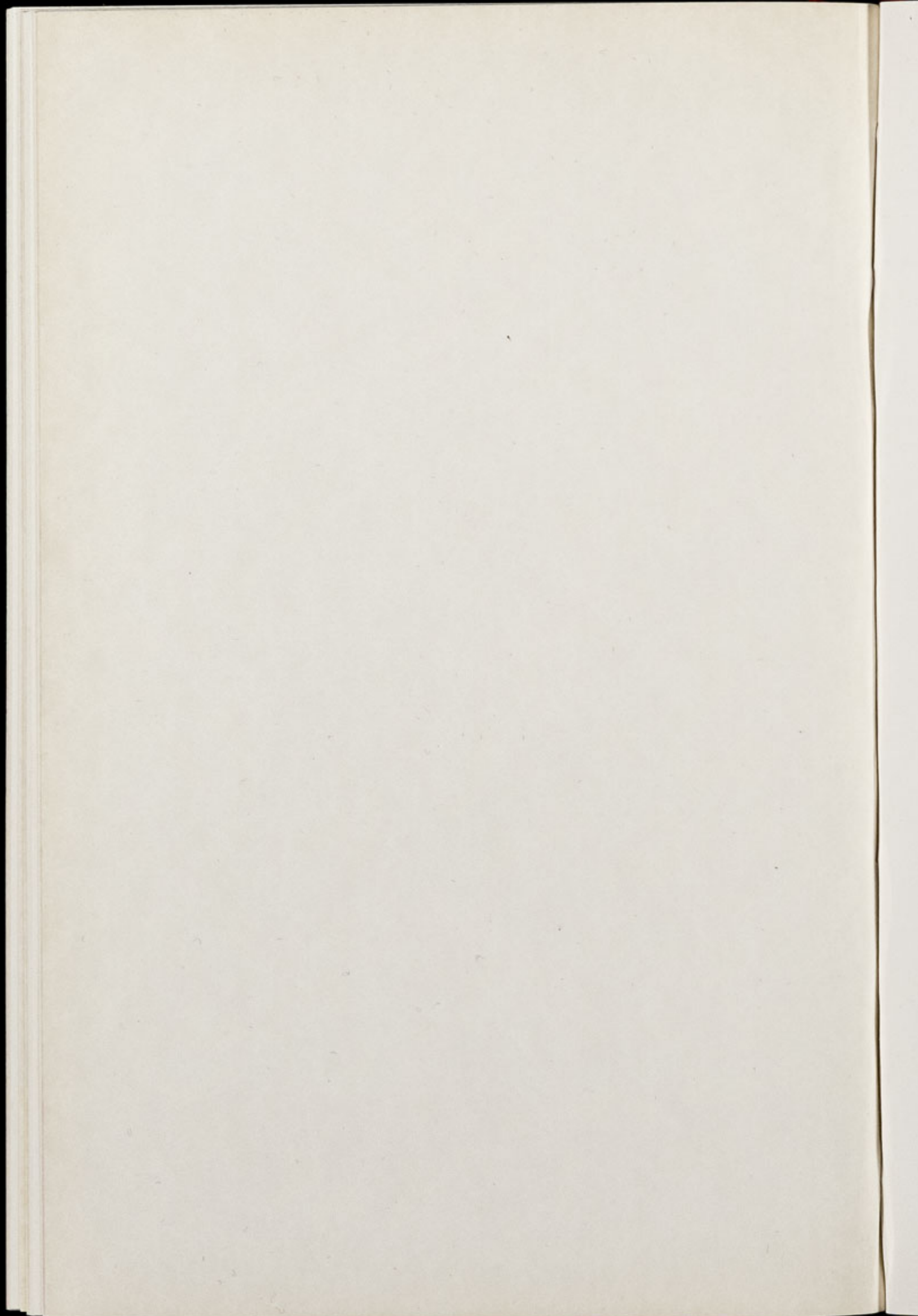




CHESTER ZOO NEWS *AND GUIDE*

August 1975

Price 10p



The North of England Zoological Society
ZOOLOGICAL GARDENS, UPTON-BY-CHESTER

COUNCIL

PROF. J. O. L. KING, Ph.D., M.V.Sc., B.Sc.(AGRIC.), F.R.C.V.S. (Chairman)
HER GRACE SALLY DUCHESS OF WESTMINSTER
H. F. PARKER
J. N. WILSON
J. A. KILPATRICK, M.B., Ch.B., F.R.C.S.E.
A. E. SMITH
F. MOSFORD
H. D. COOPER, F.I.M., F.S.F. Cert., A.I.B.
A. K. MCGHIE, A.I.B.
G. R. PRYOR, C.Eng., Hon.F.I.Prod.E. F.B.I.M.
A. J. BLAND, Dipl.Arch.R.I.B.A.
R. P. OWEN, A.R.I.C.S.
Mrs. B. H. IRVINE
F. S. CARSON, M.C., B.A., (Cantab.)
G. S. MOTTERSHEAD, O.B.E., M.Sc., DIRECTOR-SECRETARY

CONTENTS

<i>page two</i>	General News
<i>page four</i>	Arrivals and Births
<i>page seven/eight</i>	Zoo Plan
<i>page ten</i>	Bird Notes
<i>page fourteen</i>	Reptile News Aquarium News

ILLUSTRATIONS

<i>page seven</i>	Grevy's Zebra and Young
<i>page twelve</i>	Three Emu Chicks
<i>page fifteen</i>	Seven Young Leopard Geckos

COVER

*Lollipop, one of the two young chimpanzees
now in the Monkey House*

By courtesy of G. Crowther of the Daily Mirror

Annual subscription — One Pound and Seventy-Five Pence, postage paid
Telephone Chester 20106/7/8

GENERAL NEWS

The very hot dry weather we have had recently at the Zoo has enabled us to make much more progress in the construction of the various new paddocks, which have been reported in the past. Every effort is being made to make these paddocks as natural as possible. In various sections, areas of ground have been selected for the planting of trees and shrubberies, which apart from adding attraction to the enclosures, will provide a certain amount of protection for the animals from the sun, wind and rain. Over the years this method has proved very beneficial, and has been very much appreciated, not only by the animals, but by the public. We are trying all the time to maintain "a zoo without bars". These enclosures will add a considerable vista to the Zoo, and will enable us to provide more accommodation for several of the animals.

One of the recent arrivals at the Zoo is a young male tiger which we have acquired as a mate for our young female bred at the Zoo last September. Both these animals are together, they have settled down very nicely, and we hope that eventually they will produce for us.

Unfortunately, we have had another visitation from someone who has been administering poison to the big cats. A year or two ago we had a lot of trouble with the lions, and now it is the tigers which have been dosed. Exhaustive enquiries and tests have taken place. The drug has been identified, and we have now discovered how it has been administered, but by whom we do not know. It is a complete mystery, and is also very sickening because on one or two occasions the recipients of this poison have suffered from after-effects.

Visitors proceeding down Green End Lane in the zoo will notice how well the various herds of animals are developing. We now have quite a nice herd of Bison, and adjoining them a herd of around eighteen to twenty Pere David's Deer. All these animals look very much better when in a herd than either singly or in pairs. In the next paddock to the Pere David's Deer, which was once used for Eland, we now have a herd of Alpacas, but the animals

which attract the most attention are a number of marmots which have established themselves in this enclosure. These little animals when coming out of their burrows sit upright and bark, which gives them the name of Prairie Dog. In another paddock close by is the Blesbok. We have had quite a lot of trouble with the various males, which have been killing the young, therefore this herd has not grown quite as fast as it should have done.

Opposite on the northern side of these enclosures we find both the White and Black Rhino. Unfortunately we have never bred the White Rhino, as we simply have one pair, and normally they live in herds when producing. The Black Rhino has been very successful, and we have bred several in the past few years, but unfortunately our main breeding female died a few weeks ago. However, she has left behind a daughter who we hope will be as successful a breeder as her mother.

Arriving at the Monkey House we find several babies, and the latest edition has been a Hamadryas Baboon. These animals are very attractive, but can also be very aggressive.

Close to the Monkey House are a number of enclosures which exhibit Emus; we have bred quite a few of these birds this year.

Another enclosure which is looking better for the increased stock is the Wildebeeste, commonly known as the Gnu. There are two or three youngsters in the herd, which now numbers seven.

Opposite the Gnu is the Greater Kudu. These are very handsome antelopes, and the male is a particularly fine specimen. It has taken some years to get these animals settled; in the past when we thought we were beginning to increase our herd, some mishap occurred, and either the male or female has been damaged, bringing an end to productivity.

Another antelope which we would like to build up into a herd is the Blackbuck. Here again the male is very aggressive, and has killed the females; however he now seems to have settled down, and there are two very fine youngsters, as well as a young Blackbuck

born recently.

One of the most pleasing herds adjoining the Blackbuck is the Arabian Gazelle. These animals have bred very well indeed, and now appear to have established themselves as a herd.

The Fallow Deer are also establishing themselves as a fine herd, and several fawns have been born this year.

We reported in our July issue of the magazine that we had been presented with eleven Chinchillas (*Chinchilla laniger*), and we have since been presented with another two. There are now nineteen on stock, and these can be seen in the Mammal House.

As an item of news the two young Chimpanzees (*Pan troglodytes*), Lollipop born June 1973 and Jamie born March 1974, have now been removed from the Ape Nursery to the Monkey House. They have settled down quite happily there, amusing visitors with their engaging antics. The two now mature Chimpanzees (Heidi born June 1972 and Rosie born January 1973) have been taken from the Monkey House and are with the older Chimpanzees (No. 37 on the Plan).

ARRIVALS AND BIRTHS

The following mammal births have recently been recorded:

Arabian Gazelle (*Gazella arabia*)

Fallow Deer (*Dama dama*)

White-bearded Gnu (*Connochaetes taurinus albajubatus*)

Red Lechwe (*Kobus leche*)

Grevy's Zebra (*Equus grevyi*)

American Bison (*Bos bison*)

Four young Arabian Gazelles have been born in July this year; we usually have several about this time. These gazelles occupy Paddock No. 106; they have a smaller adjacent enclosure for protection against any severe weather and especially during extreme cold periods during the winter. We have provided them with all-the-year-round accommodation as they are delicate animals.

Arabian Gazelles originate from Arabia where they live in herds of twenty to fifty; they will however travel in large groups in search of water when there is a drought. Their young are usually born in October or November when in their natural habitat and the gestation period is eight to nine months.

The colouration of the *Gazella arabia* is a light brown on its back, with a fine dark brown stripe on each flank. It is creamy-brown on the chest and abdomen, the legs having dark brown markings. There is an attractive dark brown marking inside the ears with a cream line from eye to nose. The dark brown tail is short, i.e., about 6in. long. Both male and female have horns which stand straight up, curving inwards at the tips.

A White-bearded Gnu has been born in the zoo. This animal originates from East Africa, being one of several species of the Brindled Gnu (*Connochaetes taurinus*) to be found in Kenya near Lake Tanganyika and in large numbers on the East African plains. They are very dependent upon water and will travel great distances to find it. This species is now protected on many reservations and in some East African territories, although it is not yet threatened with extinction. This is a large animal, being approximately 9ft. long and 5ft. tall. The herd can be seen in Enclosure No. 93.

The colour of the White-bearded Gnu is in general silver-grey (faintly bluish). The thick mane is black and silver-grey to faint brown. It has a creamy-coloured beard extending down from the chin to the throat. There are indistinct stripes on the flanks, black markings from the forehead to the nose and a black line continuing from the mane to the tail. The tail is silver-grey tipped with black. The newly-born have no horns, their faces are black and their bodies a creamy-brown, the tail being black-tufted.

Two Red Lechwe have been bred recently in the zoo. The distribution of these animals is northern South West Africa and Botswana, the Caprivi Strip, south eastern Angola and Zambia into southern Zaire. In their natural habitat they exist on flood plains on the fringes of swamps and rivers, but many of these areas suffer the loss of streams resulting from land development

and by prolonged drought. In Botswana, it is reported that the drying up of previously wet areas has greatly restricted the range of the Red Lechwe. They have been subjected to hunting, but are now legally protected throughout most of their range; they are to be found in national parks and reserve areas. Our herd of Red Lechwe can be seen in Enclosure No. 76.

In colour the *Kobus leche* are a golden-brown, with white undersides extending from the throat to the chest and abdomen and down the insides of their legs. Only the males have horns which are long, growing straight upwards and measuring about twelve to eighteen inches.

A Grevy's Zebra has been bred in the zoo and can be seen in Enclosure No. 95. This is a northern species, inhabiting the vast mountainous regions of Abyssinia, the Southern Sudan, Somalia and Kenya. Grevy's are rare and are the tallest of the zebras, reaching a height of approximately 5ft. at the shoulder. They have a six inch mane which, in the young, extends from shoulder to tail. These animals have a beautiful, fine brown and creamy-white striping, with a dark stripe down the spine. They have a thick mane which stands up and is dark to light brown in colour. There is a broad black stripe on the back of the ears, tipped with white, and inside the ear is a dark brown narrow ring around the edge. The stripes of Grevy's zebras are bolder on the neck, but close-spaced on most of the body extending down to the hooves. The underside of the body is creamy-white and unmarked and the tail is short, being only about 9in. long. The young are born from May to August after a gestation period of thirteen months. In their natural habitat this species of zebra lives in mixed herds with other big game, preferring the open plain near water. See photograph Page 7.

* * *

We have recently received in exchange a Beisa Oryx (*Oryx gazella beisa*). These animals stand about 4ft. high at the shoulders. They originate from the deserts of East Africa where they live in large herds. An unusual feature of these animals is that they seldom drink, but obtain their moisture from roots and tubers in the



GREVY'S ZEBRA (*Equus grevyi*) AND YOUNG

By courtesy of K. W. Green, A.R.P.S.

CHESTER ZOO

THE NORTH OF ENGLAND
ZOOLOGICAL SOCIETY
ZOOLOGICAL GARDENS

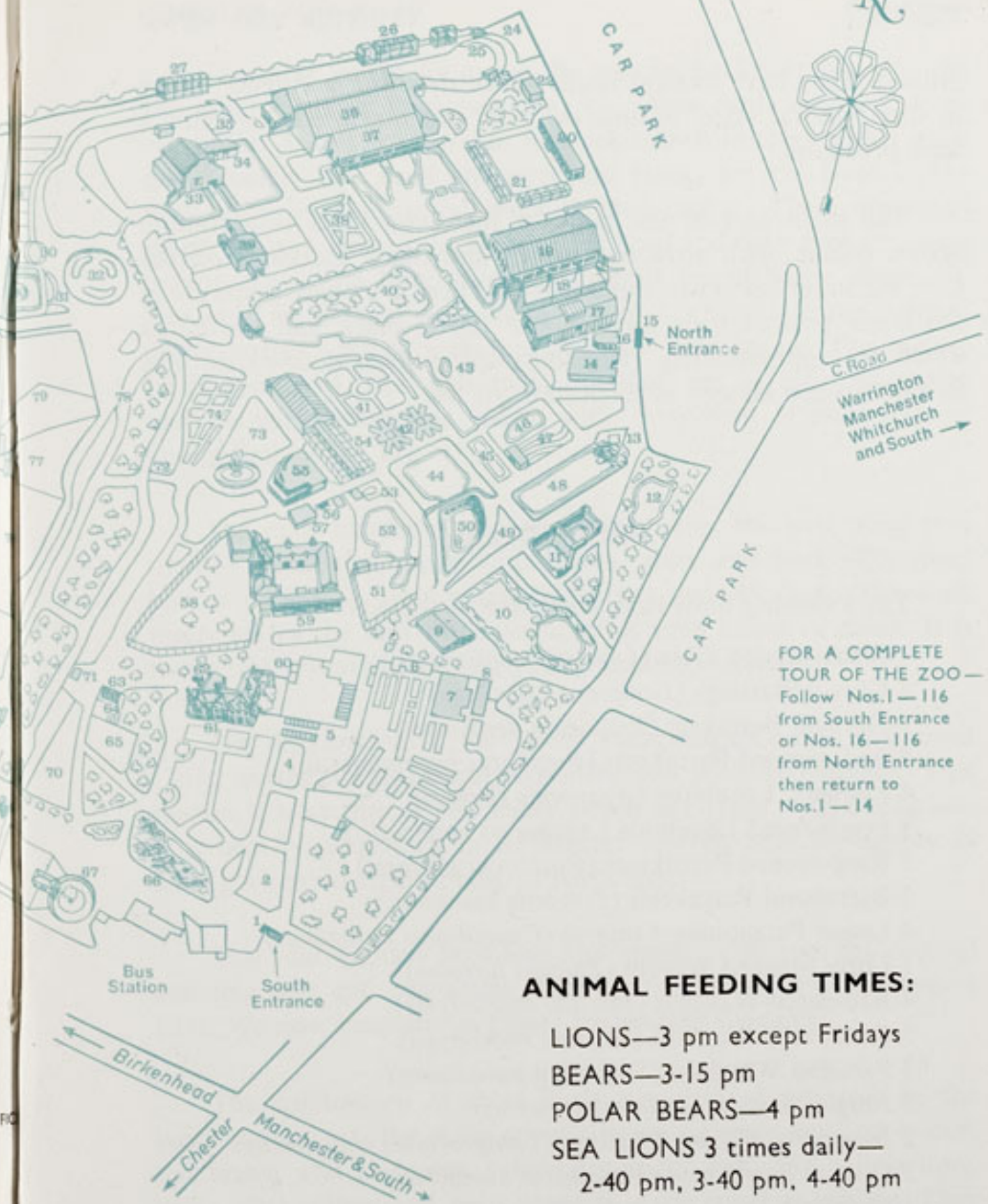
TO LECTURE HALL
(Private)



1. SOUTH ENTRANCE
2. Peacock Enclosure
3. Wapiti Paddock
4. Lesser Pandas
5. Aviaries
6. Milk Bar
7. CORONATION HALL
8. CLOAKROOM, FIRST AID, TOILETS, MOTHER AND BABY ROOM
9. CAFETERIA
10. Picnic Lawn
11. Bears
12. Sunken Garden
13. Kiosk
14. AQUARIUM
15. NORTH ENTRANCE
16. PUSH CHAIRS, WHEEL CHAIRS, LOST CHILDREN
17. Parrot House
18. Free Flight Aviary
19. APE HOUSE
20. RAINBOW CAFE AND SHOP
21. Aviaries and Picnic Lawn
22. TOILETS
23. Tuatara Exhibit
24. Peccaries
25. Waterbus Halt
26. Birds of Prey Aviaries
27. Condor Aviary
28. Jackal and Hyaena Enclosures
29. Animal Enclosure
30. Porcupine Enclosure
31. Coypus
32. Beavers
33. Giraffe House

34. Camel House
35. Waterbus Halt
36. TROPICAL, NOCTURNAL AND REPTILE HOUSES
37. CHIMPANZEES
38. Floribunda Rose Garden
39. Mammal House
40. Gibbon Island
41. H.T. Rose Garden
42. Aviaries
43. Flamingos
44. Waterfowl Enclosure
45. Waterfowl Enclosure
46. Waterfowl Enclosure
47. Penguins
48. Sealions
49. Rock Garden
50. Polar Bears
51. Cat Enclosure
52. Waterfowl Enclosure
53. Anteaters
54. BIRD HOUSE
55. FOUNTAIN RESTAURANT
56. Ape Nursery
57. TOILETS
58. Lions
59. SOUVENIR SHOP
60. TOILETS
61. OAKFIELD RESTAURANT

62. P.O. Telephone
63. Gibbon Pen
64. Animal Enclosure
65. Cheetahs
66. Ornamental Rock Garden
67. Malayan Bears
68. Animal Enclosure
69. Aviary
70. Wallabies
71. WATERBUS BOOKING OFFICE AND KIOSK
72. Waterbus Halt
73. Fountain Flower Gardens
74. Rose Garden
75. Red Lechwe
76. Red Lechwe
77. Deer or Antelope Enclosure
78. Waterbus Halt
79. Zebra and Deer Enclosure
80. Kamchatka Bears
81. ELEPHANTS
82. Hippos
83. Tapirs
84. Small Mammal House
85. Waterfowl Enclosure
86. Ankole Cattle
87. Emus and Cranes
88. Stork Enclosures
89. Baboon Pens
90. Cat House
91. Lions and Tigers



FOR A COMPLETE TOUR OF THE ZOO—
Follow Nos. 1—116
from South Entrance
or Nos. 16—116
from North Entrance
then return to
Nos. 1—14

ANIMAL FEEDING TIMES:

LIONS—3 pm except Fridays
BEARS—3-15 pm
POLAR BEARS—4 pm
SEA LIONS 3 times daily—
2-40 pm, 3-40 pm, 4-40 pm

- | | |
|-----------------------------|-----------------------------------|
| 92. Antelope and Ostrich | 105. Proposed New Bear Enclosures |
| 93. Antelope Enclosure | 106. Arabian Gazelles |
| 94. Antelope Enclosure | 107. Animal Paddock |
| 95. Zebras | 108. Bison |
| 96. Llamas | 109. Pere David's Deer Paddock |
| 97. Waterfowl Enclosure | 110. Prairie Marmots, Alpacas |
| 98. Wallabies and Waterfowl | 111. Antelope Enclosure |
| 99. Waterfowl Enclosure | 112. RHINOS |
| 100. Blackbuck | 113. TOILETS |
| 101. Wallabies | 114. Mpila Snack Bar |
| 102. Animal Paddock | 115. Antelope Enclosure |
| 103. Animal Paddock | 116. MONKEY HOUSE |

under construction

Animals may be moved from time to time.

ground. They have straight horns which they use in defence, when in their natural state, against the lion and the leopard which are their predators.

The main part of the body of the Beisa Oryx is a sombre brown colour, with attractive brown and black markings on the face, the snout being white and brown. There is a black stripe along the lower part of their forelegs, the tail is black and the horns which are approximately 18in. long, spiral straight upwards. The Beisa Oryx can be seen in Enclosure No. 94.

BIRD NOTES

The following birds have been bred in the zoo:

- 1 Black-headed Sibia (*Leioptila capistrata*)
- 2 Glossy Starlings (*Lamprocolius nitens*)
- 1 Derbian Parrakeet (*Psittacula derbyana*)
- 4 Red-rumped Parrakeets (*Psephotus haematonotus*)
- 4 Fischers' Lovebirds (*Agapornis fischeri*)
- 2 Peach-faced Lovebirds (*Agapornis roseicollis*)
- 3 Ring-necked Parrakeets (*Psittacula krameri*)
- 3 Barraband Parrakeets (*Polytelis swainsoni*)
- 4 Lesser Patagonian Conures (*Cyanoliseus patagonus*)
- 1 Little Masked Weaver (*Ploceus luteolus*)
- 4 Red-eared Waxbills (*Estrilda troglodytes*)
- 3 Sundevalls Waxbills (*Estrilda rhodopyga*)
- 3 Paradise Whydahs (*Steganura paradisaea*)
- 2 Jungle Mynahs (*Aethiopsar fuscus*)
- 2 Blue-eared Glossy Starlings (*Lamprocolius chalybaeus*)
- 2 Quaker Parrakeets (*Myiopsitta monachus*)
- 1 Diamond Dove (*Geopelia cuneata*)
- 10 Canada Geese (*Branta canadensis*)
- 3 Slaty-breasted Rails (*Rallus striatus*)
- 1 Pin-tailed Whydah (*Vidua macroura*)
- 3 Emus (*Dromaius novae-hollandiae*)
- 2 Red-whiskered Bulbul (*Pycnonotus jocosus peguensis*)
- 1 Sun Conure (*Aratinga solstitialis*)

The three young Emus can be seen in Enclosure No. 46, and the adult birds in Enclosure No. 87. These birds originate from Australia. Adults have cream to black-brown feathers which grow quite thickly; the head and neck are black, but the front of the neck displays a beautiful metallic blue colour. There are small white feathers around the sides of the head and their eyes are topaz colour. This is a large bird, the overall height being about 4ft. The soft feathers of the chicks are in fawn and brown stripes. These stripes gradually disappear as the birds grow. The mature birds appear to tread delicately, but they can be most aggressive and deliver tremendous blows with their feet. (Photograph of young Emus Page 12).

The male incubates and rears the young, the nest being in a shallow depression made with leaves, grass and bark. The incubation period for our recent hatchings was 45 days. The cock rarely leaves the nest whilst incubating, even to eat or drink. It is two to three years before the young become mature.

The distribution of the Lesser Patagonian Conure is Central Chile, northern and central Argentine and possibly Uruguay. This species is now one of the many which are faced with extinction. It is heavily persecuted in its natural habitat, basically because it damages certain crops, maize in particular.

This year we have bred four specimens, three from the original breeding pair and one single from a pair that we bred in August 1971. We now have eleven Lesser Patagonian Conures.

The colouration of these birds is a dull olive-brown on the head and throat, the wing coverts being a greeny-mustard colour, the breast and abdomen yellow to bright red. The tail is long, being olive-yellow and light green to dark green at the tip. They are noisy, screeching birds, but when in flight they are most attractive as there are flashes of blue on the wings. These birds feed on seeds, fruits and berries. Two, but sometimes three, are the normal clutch, the incubation period being approximately 24-25 days. Only the female incubates; the male is not seen to enter the nestbox until after the chicks are hatched.



By courtesy of K. W. Green, A.R.P.S.

THREE EMU CHICKS (*Dromaius novae-hollandiae*)

We have recently bred ten Canada Geese. These are very attractive birds being black, grey and white in colour. This is the common goose of North America and Canada; it has been introduced to New Zealand, England and Sweden.

A Derbian Parrakeet has been bred in the zoo. These are noisy birds and in their natural habitat they frequent coniferous forests and the rhododendron alpine forests of China. They feed on seeds, fruits, berries and leaf buds. Derbian Parrakeets damage barley-fields and peach groves. In captivity their call is a long raucous, metallic cry.

We have recently bred two Peach-faced Lovebirds. Their general plumage colour is green to yellow, rose-pink to bright blue. Some lateral feathers are marked with orange, barred with black. The bill is horn-coloured tinged with green, the iris dark brown, and the legs grey. The distribution of this bird is south West Africa where they feed on seeds and berries. They are pests in some growing areas. The Peach-faced Lovebirds have a shrill metallic shriek which they repeat several times in quick succession

Four Fischer's Lovebirds have been bred. These birds originate from Africa, inhabiting inland plateau. Their general colouring is green, but the forehead, cheeks and throat orange-red; the bill is red, the iris brown and the legs pale grey. These birds have a shrill whistle and a high-pitched twittering.

Also bred in the zoo are four Red-rumped Parrakeets. The distribution of these birds is the interior of south east Australia, where they frequent lightly timbered grasslands, open plains and cultivated farmlands. They travel about in pairs or small flocks, spending much time on the ground searching for seeds. These birds feed on seeds of grasses and herbaceous plants and green vegetable matter, also the leaves of various thistles. Their call is a shrill whistle, with an upward inflection repeated three or four times, but they do emit a pleasing trill-like whistle when perched, which is almost a song. The normal clutch is four to five eggs. Only the female broods, and incubation lasts about three weeks; the female is fed by the male at almost hourly intervals.

REPTILE NEWS

Thailand Water Dragons (*Physignathus cocincinus*)

Out of the eleven Thailand Water Dragons laid in the vivarium, five have survived and are doing well. The eggs were incubated artificially in a bed of sphagnum moss. We are anxiously awaiting the hatching of seven more eggs laid recently, but as the incubation period is 61 to 62 days it will obviously be a little while before we can report further. In our July issue we mentioned that two of the seven eggs appeared promising, so we shall see what happens.

Leopard Geckos (*Eublepharis macularis*)

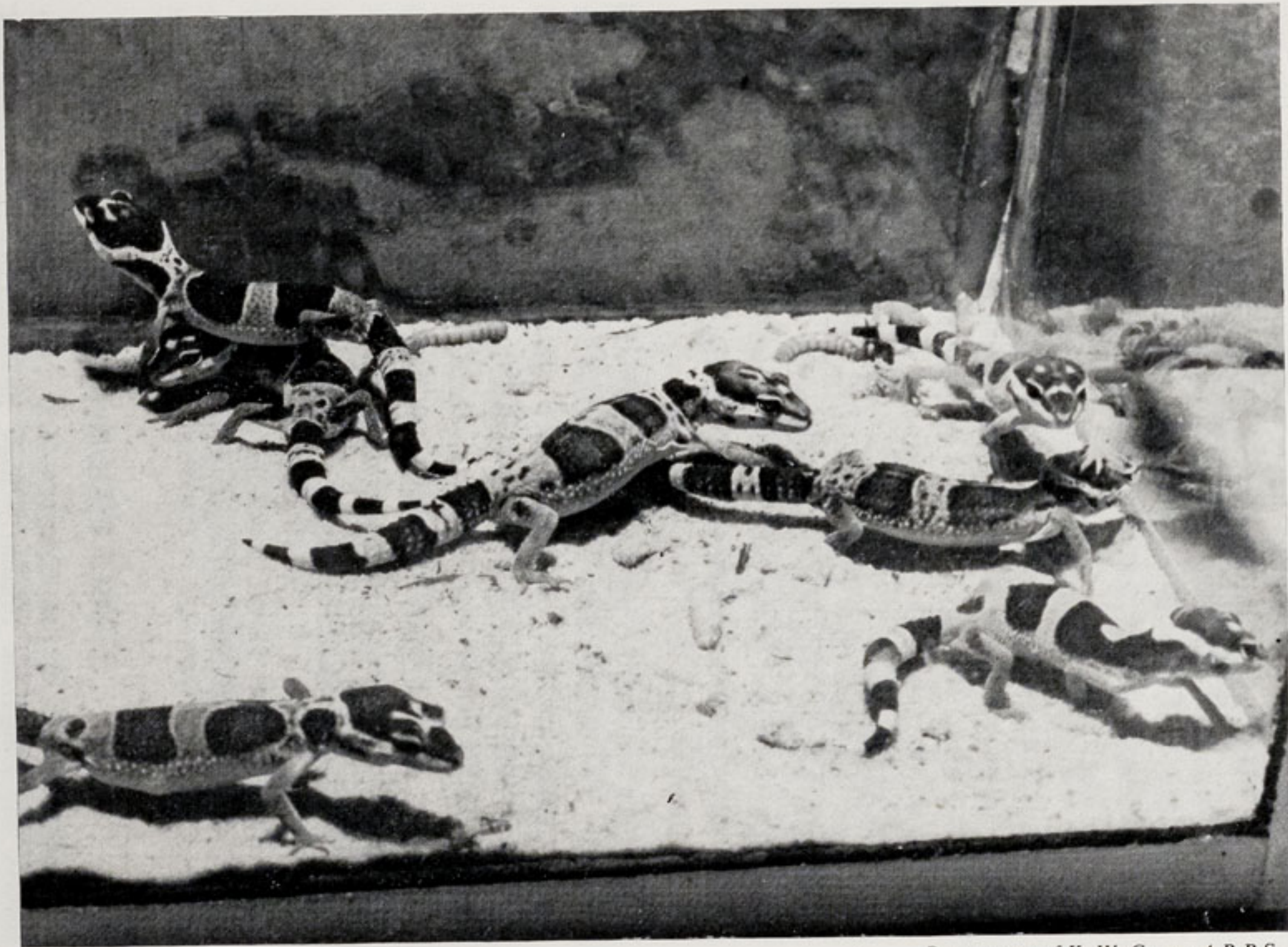
Of the eight Leopard Gecko eggs laid in the vivarium, seven are now out of their shells. Two hatched on 2nd July after a seven weeks' incubation period, one on 9th July after a six weeks' incubation period (the other one to the pair having died inside the egg, probably owing to the very hot weather bringing on a condition of exhaustion); two hatched on 16th July and two more on 20th July, both pairs hatching after an incubation period of six weeks. (Photograph on page 15.)

AQUARIUM NEWS

We have received two new Climbing Perch (*Anabas testudineus*) in exchange. These fishes were received as a pair and we are hoping to breed from them; they are of the family Labyrinth. Nature has provided these fishes with a labyrinth, a contributive respiratory organ which allows the Climbing Perch to be amphibious. On land these fishes travel quite wide distances and are able to climb over obstacles such as fallen tree-trunks or stones. The *Anabas testudineus* bury themselves in the mud during the dry season until the next "rains". They become dormant and their respiration is reduced.

In captivity these fishes are very shy and quarrelsome. They are not bubble nesters, the eggs being laid at random, rising to the surface of the tank. The young are hatched after 24-36 hours. The general colouring of the Climbing Perch is grey-green to grey-silver with various markings. These fishes grow to 6in. in their natural state, but are smaller in captivity.

Also of the family Labyrinth are three Spot Gouramis (*Trichogaster trichopterus*) which have bred recently. We have reared about 150, some of which we shall be keeping for our own



By courtesy of K. W. Green, A.R.P.S.

SEVEN YOUNG LEOPARD GECKOS (*Eublepharis macularis*)

aquarium. A few of these youngsters are the Crosby Gourami which are a variety of the sub-species (*Trichogaster trichopterus sumatranus*). Spot Gouramis have a black spot around the eyes and two black spots on the flanks. The Crosby Gouramis have three black markings also, being more like blotches than spots, around the eyes and along the sides of their bodies. Gouramis build bubble nests on top of the water, usually on the floating plants of the tank.

We have acquired two new Salvin's Cichlids (*Cichlasoma salvini*) and these are a pair. Two days after being brought in they spawned. When the new Cichlids were hatched we separated the parents in case they ate their youngsters. A week later the pair spawned again, and this time we are leaving the parents with the young to see how they look after them. Each spawning hatched about 200 young. The colour of the adult Cichlid is variable according to the mood of the fishes, being more intense when spawning. We shall be rearing a few of the Salvin's Cichlids for our show tanks.

In the aquarium we also have three Australian Pink-tailed Rainbow Fishes (*Melanotaenia fluviatalis*). These were spawned in the show tank and the youngsters taken out when they were hatched. We are hoping to rear them; about fifteen have grown, but these are not yet on show.

We have bred quite a number of Sea Horses (*Hippo campus species*) but it is most unlikely that we shall be able to rear any of the youngsters. They themselves are minute, and as they eat live microscopic fishes it is extremely difficult to find edible food for them. The male Sea Horse produces and hatches out the youngsters in his pouch, the female having transferred her eggs into the pouch of the male.

SUBSCRIPTION FORMS

New readers of the CHESTER ZOO NEWS who would like to receive the magazine regularly may be interested to know that subscription forms can be obtained from the souvenir shops. An annual subscription (12 issues) costs £1.75, postage paid, which can either be handed over the counter at the shops or posted with the completed form to the Director-Secretary, Chester Zoo, Chester.

The following notice is displayed on several boards in the grounds
Please comply with it at all times

FEEDING OF ANIMALS AND BIRDS

IT IS AN OFFENCE for any member of the public to offer food of any description to any Animal or Bird in Chester Zoo.

This regulation is made for the sake of the health of the Animals and Birds. Since the **NO FEEDING** rule was introduced, the number of deaths has dropped appreciably and sickness due to wrong feeding has been virtually eliminated.

What you may be offering to an animal may only be a sweet or an inoffensive piece of bread, but it can mean a death sentence for the animal. For example, a cough drop, which may relieve your cough, can cause instant death to many Animals and Birds in the Zoo.

You must not lose sight of the fact that you are only one of over a million visitors who visit the Zoo annually. If for instance an elephant had one bun from only one tenth of a day's visitors during the summer, it would eat between three and four thousand. You can guess the result.

We realise what a temptation it is for visitors, particularly children, to feed our Animals and Birds and this is why we invite members of the public to be present at the official feeding times.

This is a polite warning to you, asking you not to feed the animals. If you ignore it, the Keepers are authorised to ask you to leave the Gardens.

If you really love Animals and Birds, you will appreciate the wisdom of the ruling — No feeding by members of the public.

**PLEASE HELP US TO KEEP OUR COLLECTION OF
ANIMALS NOT ONLY ALIVE BUT IN FIRST CLASS
CONDITION**

*Printed in England by
W. H. Evans & Sons Ltd.
Sealand Road Trading Estate
Chester*