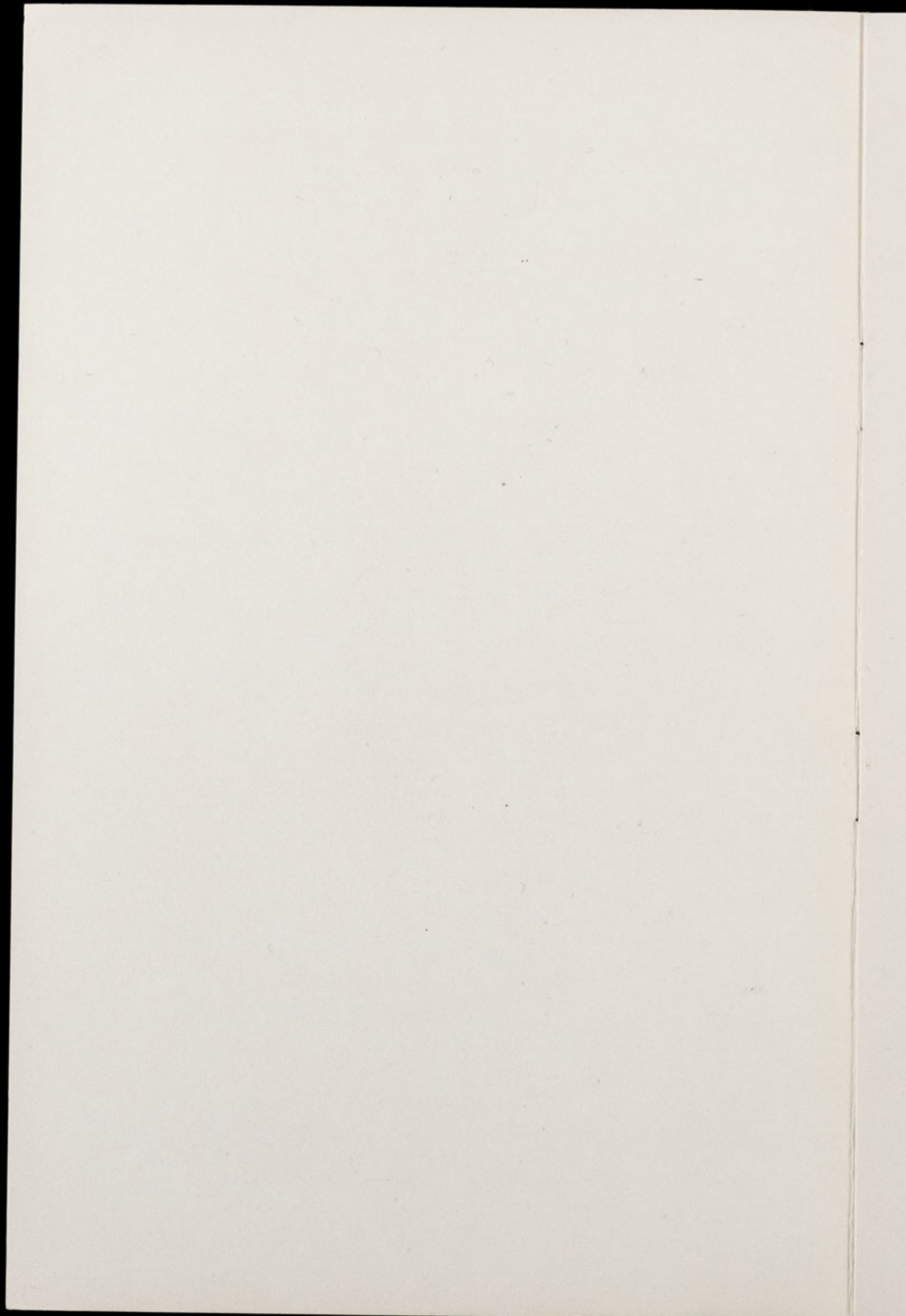




**CHESTER ZOO NEWS**  
***AND GUIDE***

April 1974

Price 6p



# The North of England Zoological Society

ZOOLOGICAL GARDENS, UPTON-BY-CHESTER

## COUNCIL

PROF. J. O. L. KING, Ph.D., M.V.Sc., B.Sc.(AGRIC.), F.R.C.V.S. (Chairman)

HER GRACE SALLY DUCHESS OF WESTMINSTER

THE RT. HON. LORD TOLLEMACHE, M.C., D.L.

H. F. PARKER

J. N. WILSON

J. A. KILPATRICK, M.B., Ch.B., F.R.C.S.E.

A. E. SMITH

F. MOSFORD

H. D. COOPER, F.I.M., F.I.F.F., A.I.B.

A. K. McGHIE, A.I.B.

G. R. PRYOR, C.Eng., Hon.F.I.Prod.E., F.B.I.M.

E. SORBY, M.A.(OXON.)

A. J. BLAND, Dipl.Arch.R.I.B.A.

R. P. OWEN, A.R.I.C.S.

G. S. MOTTERSHEAD, O.B.E., M.Sc., DIRECTOR-SECRETARY

## CONTENTS:

<i>page two</i>	Arrivals and Births.
<i>page five</i>	Bird Notes.
<i>page eight/nine</i>	Zoo Plan.
<i>page eleven</i>	General News.
<i>page twelve</i>	Progress report on Rajang.
<i>page fourteen</i>	Reptile News.
<i>page sixteen</i>	Subscription Forms.

## ILLUSTRATIONS:

<i>page four</i>	Tayra.
<i>page six</i>	Patas Monkey.
<i>page thirteen</i>	White Red Lechwe.
<i>page fifteen</i>	Baby Chimpanzee, Lollipop.

*COVER: Ring-tailed Lemur (Lemur catta); see page two.*

*By courtesy of E. Kirkland*

---

ANNUAL SUBSCRIPTION — ONE POUND AND FIVE PENCE POSTAGE PAID

TELEPHONE :: CHESTER 20106/7/8

### ARRIVALS AND BIRTHS

Since our last report the following mammal births have been recorded:

- 1 Red Kangaroo (*Megaleia rufa*)
- 2 Ring-tailed Lemurs (*Lemur catta*)

The baby Red Kangaroo, or joey, has not yet ventured from the warmth and security of its mother's pouch but it should take its first tentative hops in the not too distant future. In the meantime visitors may be lucky enough to catch a glimpse of it as it pops up its head for a look at the outside world. Even after the joey has discovered its legs, the pouch will remain its refuge until it is six or seven months old.

Its mother is one of three adult Red Kangaroos at present in this collection, the other two animals being males. Originally there were two pairs, which came from Perth as young specimens in August 1972, but unfortunately the other female died. Naturally it is hoped that the joey, the first born here for more than ten years, will be a female but it will be some time before staff are able to determine its sex. All the Red Kangaroos can be located in the building marked No. 39 on the zoo plan.

As readers can see, an exchange with Bristol Zoo last year of female Ring-tailed Lemurs has had the desired result. Prior to the arrival of Coata, the female bred at Bristol, the six Ring-tailed Lemurs in Chester's collection comprised a female named Tweet and five of her progeny. There had been no births in the group since 1968 and obviously a change of blood was required. In a straight exchange for Coata, we sent Lisa, a female produced by Tweet in 1965.

Soon after arrival Coata was introduced to Jack, a male born here in 1968, and the outcome was the birth of Lemur twins on 25th March. Twins are not uncommon in this species—in fact Tweet has produced them on two occasions. Some authorities consider that, as in humans, the occurrence of twins in Lemurs is hereditary. In this instance the sire, Jack, was a twin which, though it does not verify the theory, would at least lend support to it.

Like all Lemurs, the Ring-tailed species is found in Madagascar, but it differs from most of the others in a number of ways. Whereas the rest of the species in this primitive primate group are almost totally arboreal, the Ring-tailed Lemurs spend a lot of time on the ground, moving about in small groups and foraging for food. Accordingly their habitat in southern Madagascar is more rocky terrain than forest. Fruit, leaves and flowers form the main items in their diet but there are also reports of Lemurs taking insects and other small animals.

In captivity Ring-tailed Lemurs have good records for both longevity and breeding. The gestation period has been estimated at 144 days and in the northern hemisphere mating occurs in November and December with the resulting births in either March or April. The Ring-tailed female's method of carrying her babies, in an upright position, is another way in which this species differs from other Lemurs. In the case of twins, these are carried one on either flank until they are several weeks old and are able to ride on their mother's back.

Our photographer has been trying to capture a portrait of mother and babies for inclusion in the magazine but at the moment the female is holding them very closely to her body and all that is visible is an occasional tail or foot. However the babies will become more active shortly and it should then be possible to take a more enlightening photograph. One of the adult Lemurs features on this month's cover.

---



TAYRA (*Tayra barbara*)

*K. W. Green, A.R.P.S.*

Two new specimens acquired this month are a female Patas Monkey (*Erythrocebus patas*) and a male Tayra (*Tayra barbara*), and in both cases the animals have been sought as mates for individuals already in the collection.

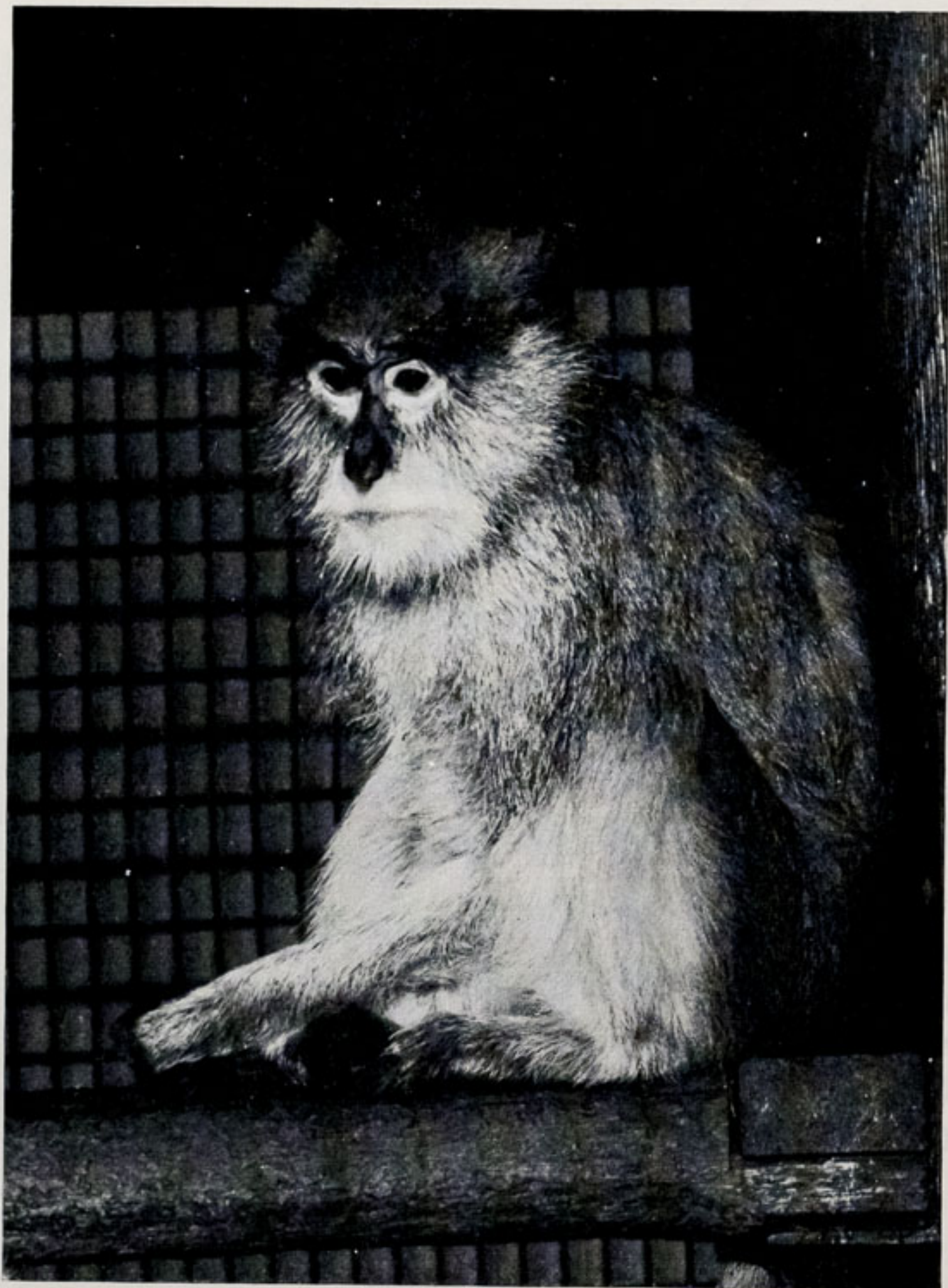
After routine veterinary checks, the male Tayra was introduced into the female's enclosure in the Camel House and quite soon it was apparent that they were compatible. Mating has been observed on a number of occasions and it is hoped that positive results from this will be recorded in a few months' time. The male Tayra can be seen in the photograph on the left. His coat and in particular his head are much darker than those of the female; in actual fact she has a greyish head.

The Tayra is one of the less well known mustelids, a branch of the carnivores which includes polecats, martens and weasels. It lives in the forests of southern Mexico, Central America and South America as far south as Paraguay and Argentina, and is also found in Trinidad. Like the polecats and weasels, the Tayra has a long, slender body and short legs but, with a total length of between three and four feet, it is one of the larger members of the mustelid family. Its diet includes small mammals and birds, fruit and honey.

The new Patas Monkey has been obtained to replace a female which died in 1972. She appears in a healthy condition and has been accepted by our male, a specimen named Charlie which has been in the collection for over ten years. The pair occupy an enclosure in the Monkey House and a photograph of the new female appears on page six.

### BIRD NOTES

From Sarawak, Indonesia, we have received a pair of young Black Hornbills (*Anthracoceros malayanus*). The female bird was acquired by the authorities there in March 1973 when loggers felled the tree bearing her nest. She was then only a small chick and with



K. W. Green, A.R.P.S.

FEMALE PATAS MONKEY (*Erythrocebus patas*)

subsequent hand rearing has become quite tame. The male of the pair was confiscated this year from a man who had kept it in a small cage. The policy of the authorities regarding such rescued and appropriated stock is to liberate it wherever possible. However whilst this is usually practicable when adult animals are involved, often younger specimens have become too tame to make successful returns to nature. This was the case with the Hornbills.

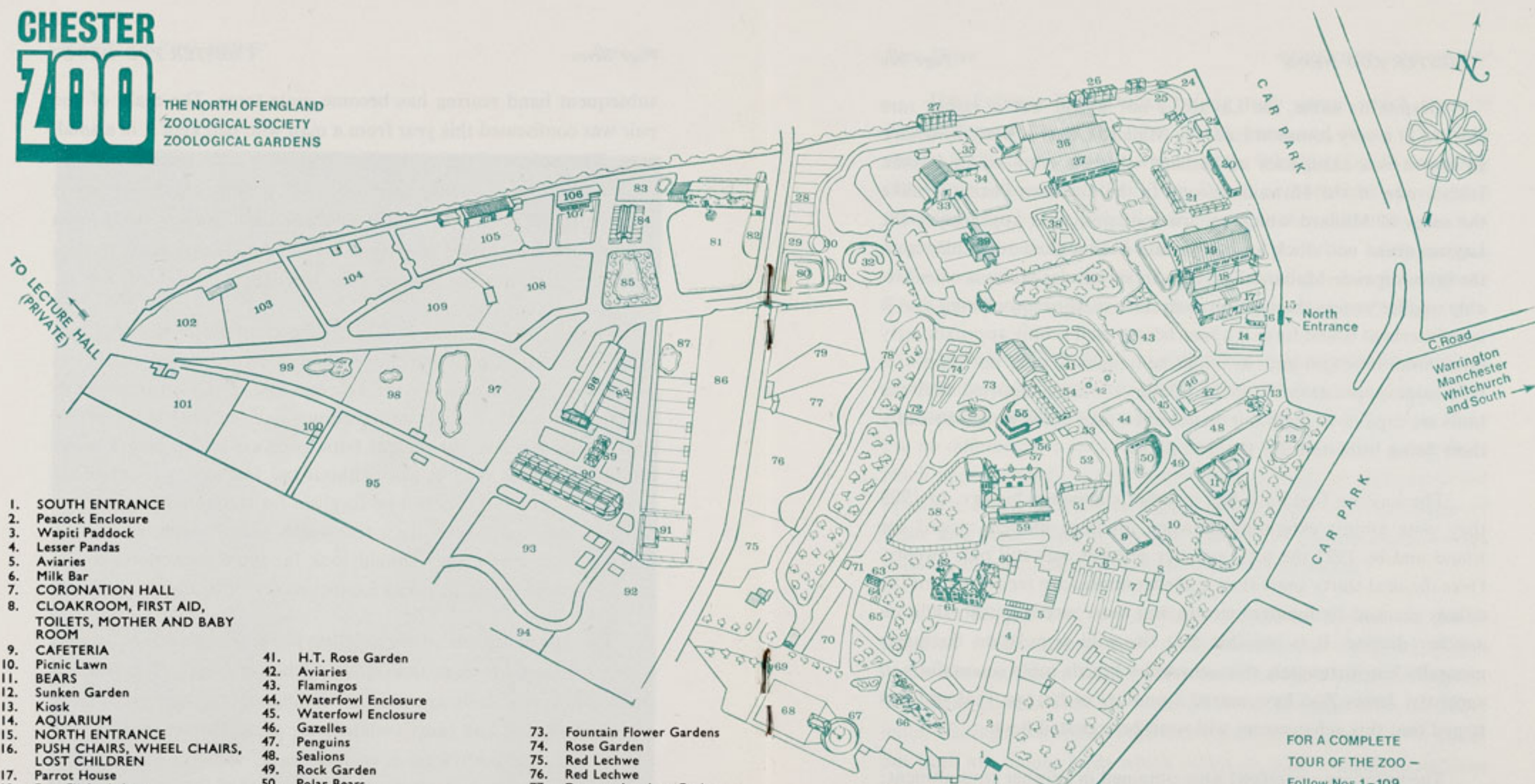
Prior to their arrival at Chester Zoo, the birds had been accommodated separately but they have now settled down together in one of the upper aviaries of the Tropical House. This is intended as a temporary home for them until their new enclosure in the Temperate Bird House is ready. At present both birds are undergoing a heavy moult and as the male is also without tail feathers, a result of his previous caging, visitors will be forgiven for thinking that these are rather scruffy individuals. In a few weeks' time though, when their plumage has grown, they should look far more presentable and a photograph will then be taken for inclusion in the magazine.

This species is one of the smallest of the Hornbill family, with adults reaching no more than thirty inches in length. The sexes of adult Black Hornbills are easy to distinguish, as the male has a creamy white bill and casque while those of the female are blackish. The plumage of both sexes is mainly black, with the exception of white tips to the outer tail feathers and, in the male only, a fairly broad, whitish stripe above the eye. The distribution of the Black Hornbills is in the forests of Malaya, Borneo and Sumatra and these birds enjoy a varied diet. The menu of captive specimens has included fruits, rice, eggs, raw fish and various small mammals, birds and reptiles.

Two female Laysan Teal (*Anas platyrhynchos laysanensis*) have also been acquired since the last report. Both birds originated from Jersey Zoo where they were bred and here they have formed what is hoped will be a breeding group with a single Laysan drake.

# CHESTER ZOO

THE NORTH OF ENGLAND  
ZOOLOGICAL SOCIETY  
ZOOLOGICAL GARDENS



1. SOUTH ENTRANCE
2. Peacock Enclosure
3. Wapiti Paddock
4. Lesser Pandas
5. Aviaries
6. Milk Bar
7. CORONATION HALL
8. CLOAKROOM, FIRST AID, TOILETS, MOTHER AND BABY ROOM

9. CAFETERIA
10. Picnic Lawn
11. BEARS
12. Sunken Garden
13. Kiosk
14. AQUARIUM
15. NORTH ENTRANCE
16. PUSH CHAIRS, WHEEL CHAIRS, LOST CHILDREN
17. Parrot House
18. Free Flight Aviary
19. APE HOUSE
20. RAINBOW CAFE AND SHOP
21. Aviaries and Picnic Lawn
22. TOILETS
23. Tuatara Exhibit
24. Peccaries
25. Waterbus Halt
26. Birds of Prey Aviaries
27. Condor Aviary
28. Jackal and Hyaena Enclosures
29. Animal Enclosure
30. Porcupine Enclosure
31. Coypus
32. Beavers
33. Giraffe House
34. Camel House
35. Waterbus Halt
36. TROPICAL, NOCTURNAL AND REPTILE HOUSES
37. CHIMPANZEES
38. Floribunda Rose Garden
39. Mammal House
40. Gibbon Island

41. H.T. Rose Garden
42. Aviaries
43. Flamingos
44. Waterfowl Enclosure
45. Waterfowl Enclosure
46. Gazelles
47. Penguins
48. Sealions
49. Rock Garden
50. Polar Bears
51. Tigers
52. Waterfowl Enclosure
53. Anteaters
54. BIRD HOUSE
55. FOUNTAIN RESTAURANT
56. Ape Nursery
57. TOILETS
58. Lions
59. SOUVENIR SHOP
60. TOILETS
61. OAKFIELD RESTAURANT
62. P.O. Telephone
63. Gibbon Pen
64. Animal Enclosure
65. Cheetahs
66. Ornamental Rock Garden
67. Malayan Bears
68. Animal Enclosure
69. Aviary
70. Wallabies
71. WATERBUS BOOKING OFFICE AND KIOSK
72. Waterbus Halt

73. Fountain Flower Gardens
74. Rose Garden
75. Red Lechwe
76. Red Lechwe
77. Deer or Antelope Enclosure
78. Waterbus Halt
79. Zebra and Deer Enclosure
80. Kamchatka Bears
81. ELEPHANTS
82. Hippos
83. Tapirs
84. Small Mammal House
85. Waterfowl Enclosure
86. Ankole Cattle
87. Gazelles and Emus
88. Stork Enclosures
89. Baboon Pens
90. Cat House
91. Lions and Tigers
92. Antelope and Ostrich
93. Antelope Enclosure
94. Antelope Enclosure
95. Zebras and Llamas
96. MONKEY HOUSE
97. Waterfowl Enclosure
98. Wallabies and Waterfowl
99. Cranes and Waterfowl
100. Blackbuck

101. Alpacas
102. Bison Paddock
103. Pere David's Deer Paddock
104. Eland and Marmots
105. RHINO HOUSE
106. TOILETS
107. Mpila Snack Bar and Kiosk
108. Antelope Enclosure
109. Antelope Enclosure

Animals may be moved from time to time.

FOR A COMPLETE TOUR OF THE ZOO - Follow Nos.1-109 from South Entrance or Nos.16-109 from North Entrance then return to Nos.1-14

## ANIMAL FEEDING TIMES:

LIONS—3 pm except Fridays  
BEARS—3-15 pm  
POLAR BEARS—4 pm  
SEA LIONS 3 times daily—  
2-40 pm, 3-40 pm, 4-40 pm

Despite its name, the Laysan is not a teal but a rather rare relative of a very common bird, the Mallard (*Anas p. platyrhynchos*). In fact it is a subspecies of Mallard which is confined to Laysan Island, one of the Hawaiian group in the northern Pacific. Unlike the sexes of Mallard which are quite dissimilar in appearance, the Laysan drake and duck look alike and bear a close resemblance to the brown female Mallard. The Laysan subspecies is also a considerably smaller variety than its common relative, the reason being that it is an interbred island form. Laysan Island itself is only approximately three miles in length and, as might be imagined, does not support a very large population of ducks. Observers have reported that the birds are capable of flight but do not often take to the wing, obviously there being little need for them to do so.

The Laysan Teal have had a rather chequered history. In 1909 they were almost exterminated when plumage hunters visited the island and by 1923 the total number of birds was still only twenty. Over the next thirty years they made an impressive recovery until the colony reached six hundred strong, but more recent reports indicate another decline. It is possible that the wild population fluctuates naturally but fortunately this subspecies breeds quite successfully in captivity. Jersey Zoo have reared a number of Laysan Teal and it is hoped that this achievement will soon be repeated here.

The following waterfowl were obtained in another consignment:

- 1.1 Red-crested Pochard (*Netta rufina*)
- 1.1 Rosy-billed Pochard (*Netta peposaca*)
- 3.0 Mandarin Ducks (*Aix galericulata*)
- 2.2 Fulvous Tree Ducks (*Dendrocygna bicolor*)
- 1.1 Bahama Pintails (*Anas bahamensis rubirostris*)
- 1.1 Red Shovelers (*Anas platalea*)
- 2.2 Ringed Teal (*Anas leucophrys*)

Two of the above species, the Fulvous Tree Ducks and the Ringed Teal, are particularly interesting. Both are being exhibited here for the first time.

The Fulvous Tree Ducks belong to a genus which is quite distinct from those of the other ducks, geese and swans. The eight species in this family are also known as the Whistling Ducks and really this name is more apt than Tree Ducks as both sexes have shrill whistling cries but only in a few localities do they habitually perch in trees. Instead most of the Whistling Ducks prefer the reedy margins of freshwater lakes and streams. Their closest relative is probably the Coscoroba Swan, a pair of which can also be seen at Chester.

The Fulvous Tree Duck has one of the most unusual distributions of all birds, as it is found in North and South America, East Africa, Madagascar, India, Ceylon and parts of Burma. Furthermore there are no differences in form throughout this entire range. Adult birds reach approximately twenty inches in length and in appearance the sexes are alike, both being mainly brown birds with markings of white and black. Diet in the wild consists of various small aquatic animals, insects, snails, larvae and aquatic vegetation.

The Ringed Teal has a more limited distribution in South America which incorporates southern Bolivia, Paraguay, south western and southern Brazil, north eastern Argentina and Uruguay. The drake Ringed Teal has more colourful plumage than his duller mate, bearing a particularly attractive pink breast spotted with black, but both are dainty birds which attain an adult length of eighteen inches. In the wild state this is a shy species and not a great deal has been recorded of its habits. It is said to frequent tropical woodland and to nest in holes in trees.

#### GENERAL NEWS

Over the past three years several pure white calves have been produced in our herd of Red Lechwe (*Kobus leche*). The first white specimen, a male, was born in 1971 and later was sold to another zoo. Last year three such calves were delivered but one youngster died when it was just a few days old. The surviving two proved to be

a pair and it was decided that they would be retained in the collection for breeding purposes but would be separated from the remainder of the Red Lechwe herd.

A few weeks ago they were transferred from the Lechwe paddock to an enclosure adjoining house No. 39, where the photograph on page thirteen was taken. They are not true albinos as their eyes are brown, instead of pink, and we would be the first to admit that they are not the most appealing of animals. If they do breed, though, it will be interesting to see if the result is white offspring or the more usual reddish brown calves.

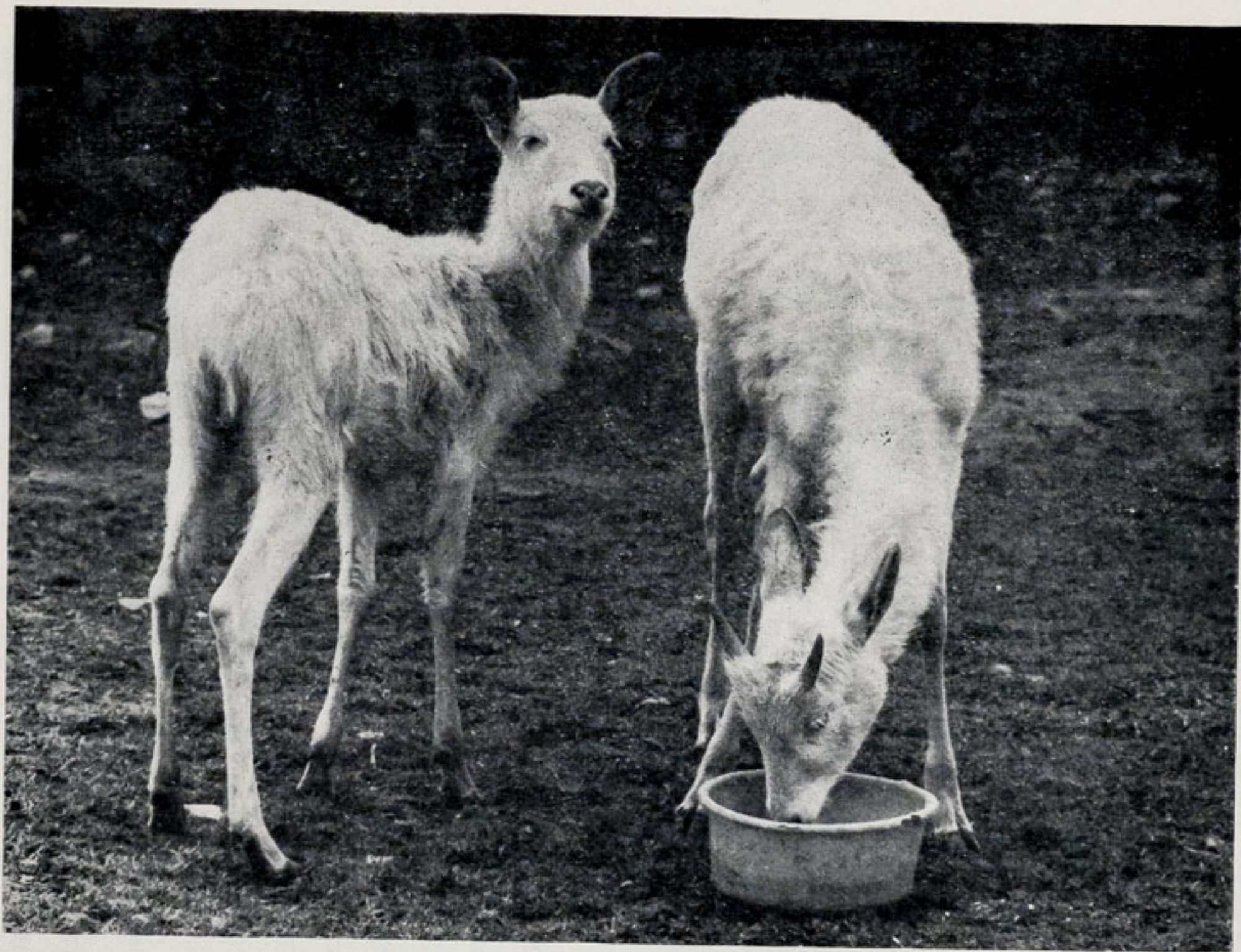
---

We are pleased to report that the progress of Judi, the little female Orang utan born here in February, remains most satisfactory. Her mother, Lola, is as attentive as ever and the baby is growing strongly.

Unfortunately another baby at the zoo, a little female Chimpanzee named Lollipop, has had to be removed from her mother, Meg. This old Chimp refuses to wean her babies and, if they are not taken away for hand rearing, they become stunted and die. Meg recovered very quickly and has since moved back into the group of adult Chimpanzees. Lollipop is being cared for by keepers in the nursery, No. 56, and already she is eagerly taking solid food. As can be seen by the photograph on page 15, she is an endearing little animal.

#### **PROGRESS REPORT ON RAJANG**

Readers may recall that during January Rajang, a young male Orang utan, had a stainless steel pin introduced into a fractured left femur. Nine and a half weeks later the Veterinary Officer removed this pin under general anaesthesia at the veterinary hospital. An X-ray taken prior to the removal of the pin showed that the fracture had healed well.



PAIR OF WHITE RED LECHWE (*Kobus leche*)

*K. W. Green, A.R.P.S.*

Rajang was returned to the zoo and up to the time of writing his progress has been excellent. Although he has not yet been allowed to join the main group of Orang utans in their inner, concreted enclosure, on sunny days he spends a few hours with them on one of the outer grassed islands. Here he has access to a climbing frame which enables him to exercise and thus strengthen his limb.

### REPTILE NEWS

Amongst several new arrivals in this section are two snakes which we believe are Bahaman Boas (*Epicrates striatus*). Both are about three-quarters grown and, as during the past few days mating has occurred frequently, it is obvious that they are a pair. At this stage any disturbance might put an end to mating activity, so their transfer to an exhibition vivarium has been delayed for the time being.

The single Horned Sand Viper (*Cerastes cornutus*) in the collection has been joined by a specimen of a related species, the Cerastes Sand Viper (*Cerastes cerastes*). Although at first glance they are very similar, these snakes differ from each other in a number of ways. For instance, the spines which are present above the eyes of the Horned Sand Viper are absent in *Cerastes cerastes*. While the basic body colours of both snakes are pale yellows, pinks and greys, *Cerastes cerastes* alone has a very attractive, slaty blue stripe above each eye.

Both are nocturnal, desert dwelling species from Africa and Arabia, the Cerastes Sand Viper having the more northerly range. Their habit of travelling by the sidewinding method is typical of snakes which live on sand and they are also able to bury themselves fairly rapidly. The Cerastes Sand Viper we have obtained is a young specimen but when adult it will measure no more than thirty inches in length.



*K. W. Green, A.R.P.S.*

BABY FEMALE CHIMPANZEE (*Pan troglodytes*) LOLLIPOP

A small Spitting Cobra (*Naja nigricollis*) is another addition to this section. This snake has not yet been put on exhibition, the reason being that it is only a few months old and consequently extremely aggressive. Adult specimens show more tolerance but even so, from the keeper's point of view, of all the venomous snakes on exhibition, the Spitting Cobra is the most dangerous. It aims a jet of venom directly at the eyes of its victim and is accurate over a distance of several feet. If venom enters the eyes and is not treated, permanent damage or blindness can result. As a confrontation with a young Spitting Cobra could be as lethal as that with an adult, readers will appreciate the prudence of not putting a small specimen into a large vivarium where it would be difficult to locate immediately.

A very attractive Black and White Cobra has been acquired. The new snake is a member of the savannah race of this African species (*Naja melanoleuca*) and the bands on its neck and ventral surface are yellow instead of white. It is a fairly well grown specimen and at the present time it is beginning to show itself more frequently. The door leading to a small cage behind the vivarium is left open, allowing the snake to go in and out as it wishes and in this way enabling it to adjust slowly to the presence of visitors.

Other new specimens which can be seen include a pair of Common Iguanas (*Iguana iguana*), a Clouded Monitor (*Varanus nebulosus*) and a Western Black Tree Snake (*Thrasops jacksonii*).

---

### SUBSCRIPTION FORMS

New readers of the CHESTER ZOO NEWS who would like to receive the magazine regularly may be interested to know that subscription forms can be obtained from the souvenir shop. An annual subscription (12 issues) costs £1.05, postage paid, which can either be handed over the counter at the shop or posted with the completed form to the Director-Secretary, Chester Zoo, Chester.

**The following notice is displayed on several boards in the grounds**

**Please comply with it at all times.**

### **FEEDING OF ANIMALS AND BIRDS**

**IT IS AN OFFENCE** for any member of the public to offer food of any description to any Animal or Bird in Chester Zoo.

This regulation is made for the sake of the health of the Animals and Birds. Since the NO FEEDING rule was introduced, the number of deaths has dropped appreciably and sickness, due to wrong feeding has been virtually eliminated.

What you may be offering to an animal may only be a sweet or an inoffensive piece of bread, but it can mean a death sentence for the animal. For example, a cough drop, which may relieve your cough, can cause instant death to many Animals and Birds in the Zoo.

You must not lose sight of the fact that you are only one of over a million visitors who visit the Zoo annually. If for instance an elephant had one bun from only one tenth of a day's visitors during the summer, it would eat between three and four thousand. You can guess the result.

We realise what a temptation it is for visitors, particularly children, to feed our Animals and Birds and this is why we invite members of the public to be present at the official feeding times.

This is a polite warning to you, asking you not to feed the animals. If you ignore it, the Keepers are authorised to ask you to leave the Gardens.

**If you really love Animals and Birds, you will appreciate the wisdom of the ruling — No Feeding by members of the public.**

**PLEASE HELP US TO KEEP OUR COLLECTION OF ANIMALS NOT ONLY ALIVE BUT IN FIRST CLASS CONDITION.**

---

Printed in England by  
G. R. Griffith Ltd.  
Castle Printing Works  
Chester

---