



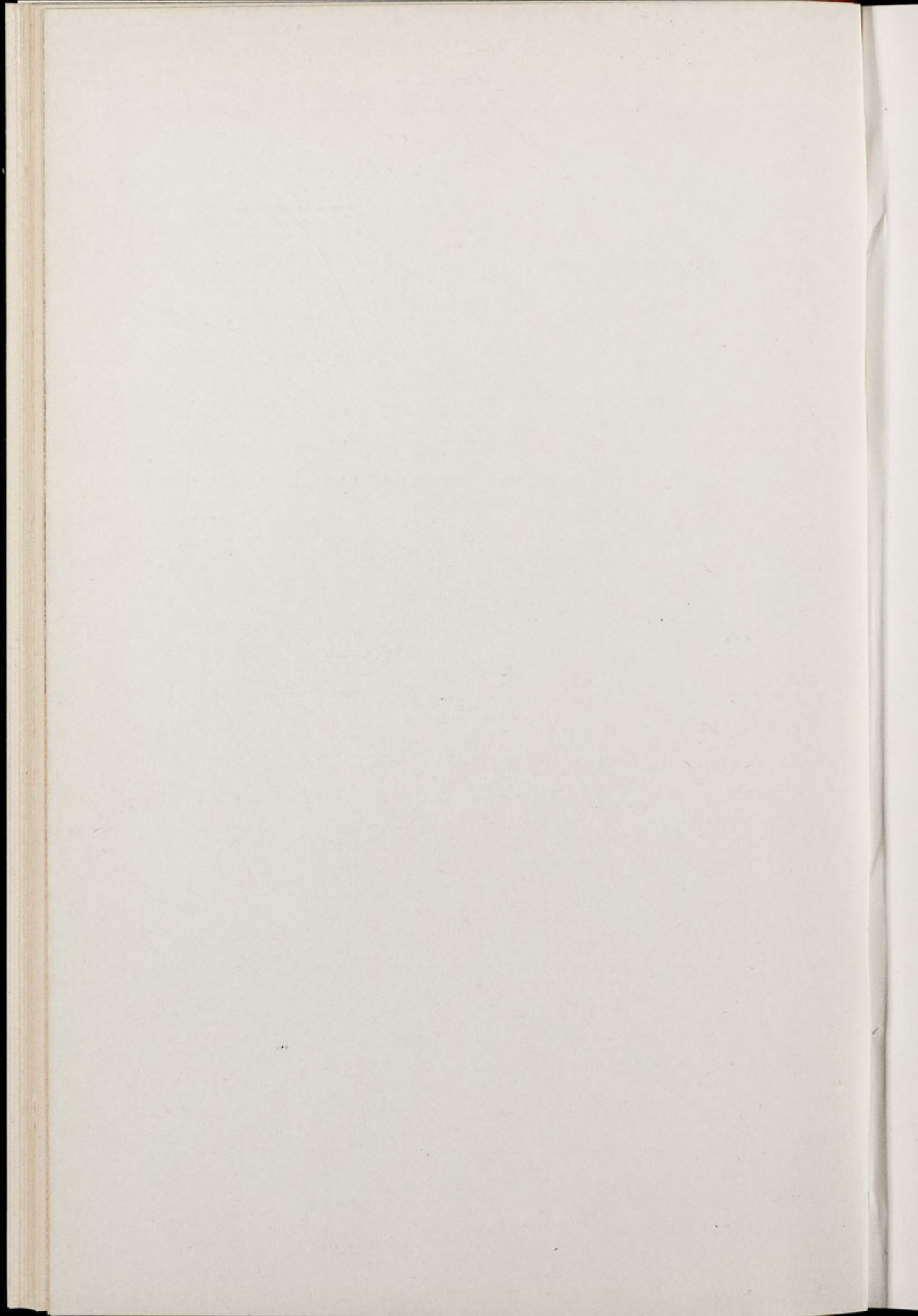
# Chester Zoo News

## *AND GUIDE*

THE NORTH OF ENGLAND ZOOLOGICAL SOCIETY  
ZOOLOGICAL GARDENS, UPTON-BY-CHESTER

March 1978

Price 12p



# The North of England Zoological Society

## ZOOLOGICAL GARDENS, UPTON-BY-CHESTER

### COUNCIL

PROF. J. O. L. KING, Ph.D., M.V.Sc., B.Sc.(Agric.), F.R.C.V.S., F.I.Biol.  
HER GRACE SALLY DUCHESS OF WESTMINSTER (Chairman)  
H. F. PARKER  
J. N. WILSON  
J. A. KILPATRICK, M.B., Ch.B., F.R.C.S.E.  
F. MOSFORD  
H. D. COOPER, F.I.M., F.I.F.F. Cert., A.I.B.  
G. R. PRYOR, C.Eng., Hon.F.I.Prod.E., F.B.I.M.  
A. J. BLAND, Dipl.Arch.R.I.B.A.  
R. P. OWEN, A.R.I.C.S.  
MRS. B. H. IRVINE  
F. S. CARSON, M.C., B.A.(Cantab.)  
DR. J. E. D. CHARLES-JONES, M.B., B.S., M.R.C.G.P.  
DINAH, LADY TOLLEMACHE  
W. KELSALL, O.B.E., Q.P.M.  
G. S. MOTTERSHEAD, O.B.E., M.Sc., *Director-Secretary*

### CONTENTS

<i>page two</i>	Animal Adoption Scheme
<i>page four</i>	General News
<i>page six</i>	Endangered Species
<i>pages eight/nine</i>	Zoo Plan
<i>page eleven</i>	Aquarium Notes.
<i>page twelve</i>	Latest Arrivals
<i>page thirteen</i>	Waterways
<i>page fourteen</i>	Gardening Notes.
<i>page sixteen</i>	Subscriptions

### ILLUSTRATIONS

<i>page three</i>	'Look North' Team with Arabian Gazelle
<i>page five</i>	Polar Bear breaking the ice.
<i>page seven</i>	Giant Anteater
<i>page ten</i>	Formosan Sika Deer

### COVER

Tayra. Further details on Page 12

*By courtesy of K. W. Green, A.R.P.S.*

---

Annual subscription — Two Pounds and Thirty Pence, postage paid

Telephone Chester 20106/7/8

### ANIMAL ADOPTION SCHEME

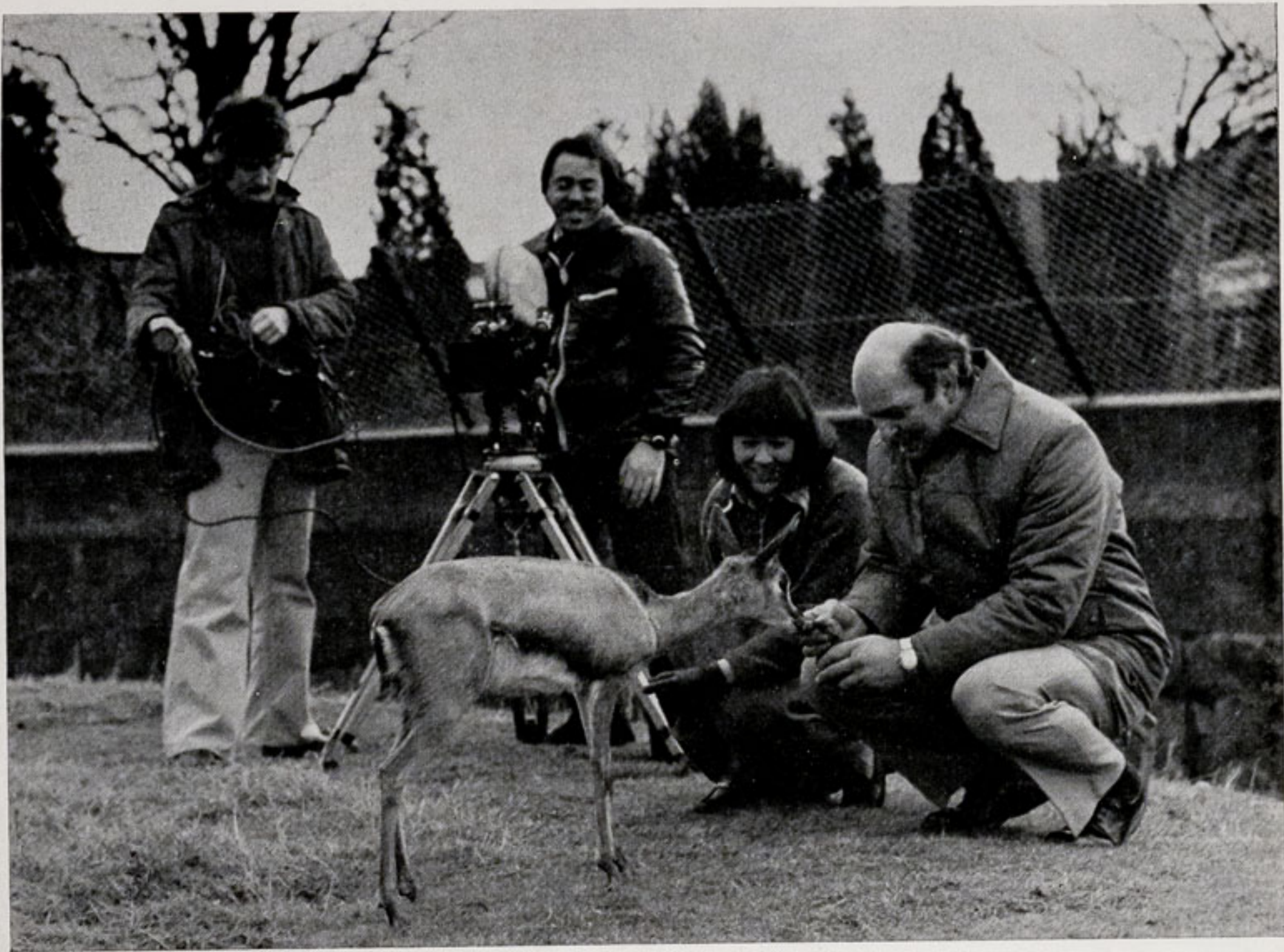
A visit to the Zoo was paid by the team of 'LOOK NORTH—NATIONWIDE' in connection with the Animal Adoption Scheme which has been put into operation by the B.B.C., with the support and encouragement of the World Wildlife Fund. The team from 'LOOK NORTH' consisted of Felicity Goodey (Reporter), Ken Ward (Cameraman) and Kevin Neary (Sound Recordist). This is one of a series of T.V. Broadcasts which have taken place at the Zoo, previous recordings having been made in connection with 'Jubilee' the baby Elephant and the Pygmy Hippopotamus. Further T.V. Programmes are planned in the future to incorporate other Endangered Species exhibited at the Zoo, i.e. the Lion-tailed Macaque and Chincilla.

Accompanied by members of Zoo staff, the T.V. Team paid a visit to the enclosure containing the young Arabian Gazelles. As mentioned in a previous issue of the magazine, these three charming little animals have been hand-reared by Mr. Wait (Curator of Mammals) and they have now been placed in an enclosure in the Zoo grounds where they are on show to the general public.

On the day the visit was made the Gazelles were very frisky and playful, butting their visitors and generally trying to 'get in on the act'. Felicity was photographed nursing the youngest animal, which is about two months old and still bottle-fed. The name of this little Gazelle is 'Salome' and her two companions are named 'Farah' and 'Sultan'.

There are now very few of these Arabian Gazelles left in the wild as they have fallen victim to the high velocity rifles of the huntsmen. Chester was one of the first Zoos to breed these animals in captivity; the first arrivals came here in 1962 and the present herd of sixteen was bred from the original animals obtained. The cost to keep them in captivity is approximately £2.00 per head per day, which is a small price to pay to save such delightful creatures.

The Breeding Herd, which is situated in Enclosure No. 106, was also photographed.



*By courtesy of K. W. Green, A.R.P.S.*

"LOOK NORTH" TEAM WITH ARABIAN GAZELLE

The team then moved on to the enclosure containing the Red and Grey Kangaroos. The Grey Kangaroo still has the baby in its pouch and it was hoped to obtain a picture, but as the day was quite chilly it decided not to put in an appearance.

Grey Kangaroos are more rare than the Red variety and do not establish too well in our British climatic conditions, although once they adapt to our weather, generally they remain quite healthy. It is hoped the baby Kangaroo will be able to leave its mother's pouch within a couple of weeks, as it is now quite well developed.

### GENERAL NEWS

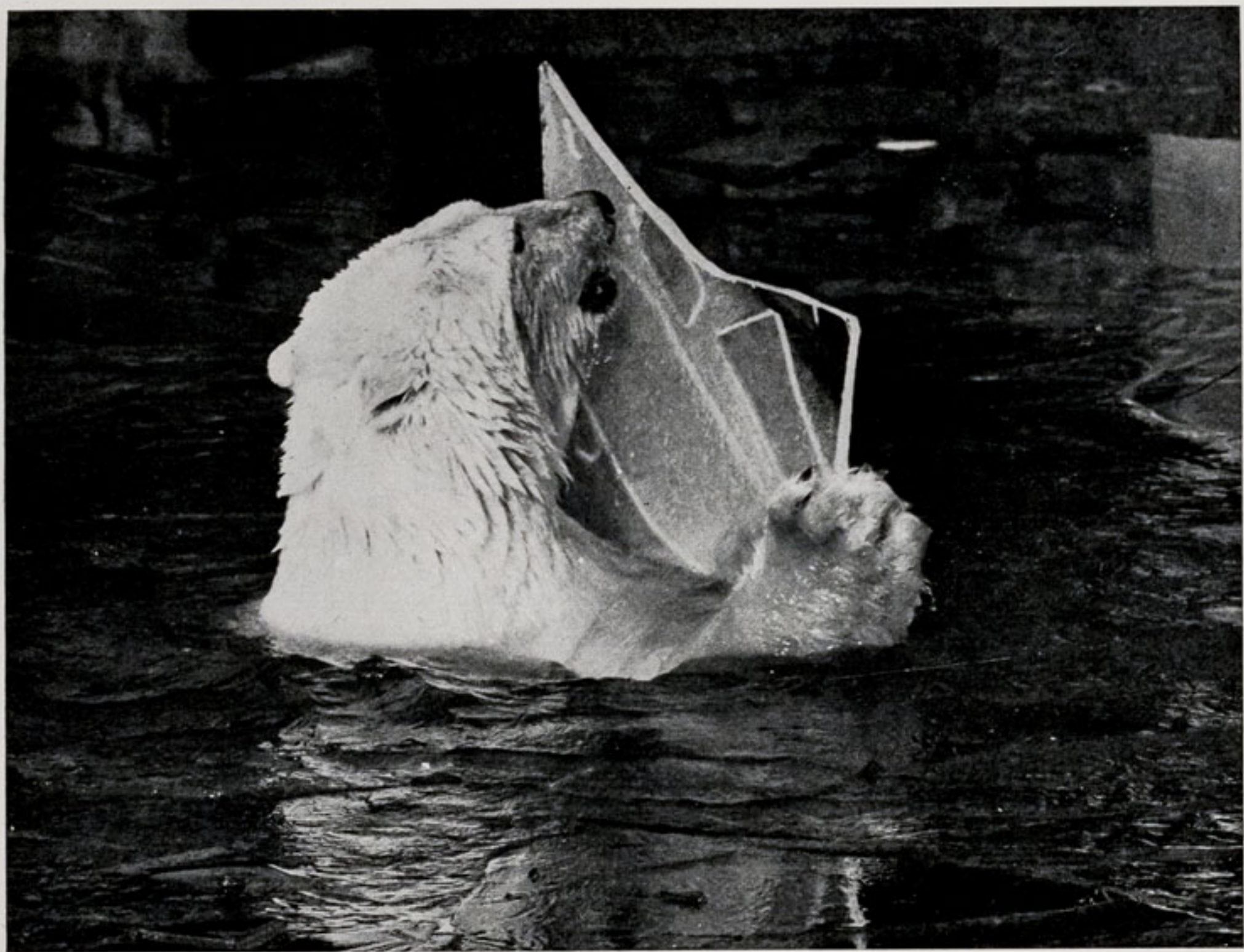
The severe Winter has affected our animals in various ways; for example the Chimpanzees have had to spend more time than usual indoors, as the moats surrounding their Islands have been frozen over. Had they been allowed out of doors during this period they would no doubt have taken this opportunity to run across the ice and escape into the Zoo Grounds.

Although the Polar Bears have been in their element, it has been necessary to break the ice in their enclosure to prevent them from standing upon it on their hind legs, thus becoming a danger to visitors.

The Keepers have had extra work during the cold spell, ensuring that the birds and animals have had fresh drinking water; this necessitated breaking the ice in their drinking troughs, only for it to freeze again almost immediately.

Extra fuel bills have been incurred in keeping the Ape House, Monkey House, Tropical House, Reptile House, etc., sufficiently heated for their occupants.

A member of the Zoo Staff couldn't believe his eyes when recently returning to the Office he saw a male Sparrowhawk perched on the lawn. This beautiful predator with slate-blue coloured wings and tail, reddish barred underparts and flashing yellow eyes had caught a sparrow and was starting to eat it. When the hawk found it was being observed, it took its prey between the hedge and the office wall, where it was able to finish its meal in peace.



*By courtesy of R. Blake, Daily Express*

POLAR BEAR BREAKING THE ICE

After becoming almost extinct in this area during the 1960's we are pleased to report that Sparrowhawks are now regularly breeding in this area of Cheshire. The Zoo provides free food for many wild birds and this, in turn, attracts the predators like the Sparrowhawk and the more common Kestrel. However, the attentions of these birds have done nothing to alleviate the problems we have with the hordes of Starlings which roost in the Zoo Grounds each Winter, causing hundreds of pounds worth of damage and a great deal of mess.

### ENDANGERED SPECIES

With all the present publicity about Endangered Species in captivity in mind, we thought readers may be interested in a description of some of these animals exhibited at Chester. At present no fewer than 28 species listed as 'endangered' in the I.U.C.N. Red Data Book are on view in the collection.

We start this month with a description of one of Nature's oddities, the Giant Anteater (*Myrmecophaga tridactyla*) and the Formosan Sika Deer (*Cervus nippon taiouanus*).

The Giant Anteater belongs to the order Edentata, which means toothless, though perhaps this is not strictly true in a literal sense as some of the order do have teeth, namely Sloths and Armadillos. It is however true to say that the Anteater has no teeth and feeds in a rather specialised way.

The Giant Anteater is diurnal and terrestrial, living in the open savannahs of South America, but often venturing into the tropical rain forests in search of its basic food, i.e. ants and termites, although other insects are also taken. The long, thin head is cylindrical in shape, ending in a mouth so narrow that it would be incapable of admitting a human finger. From this mouth darts a worm-like tongue that can reach 8-9 inches into breaches made into the termites' nests with the front claws, and be withdrawn with hundreds of insects sticking to it and each time emerge from the mouth clean and covered in a viscous saliva.



GIANT ANTEATERS AT FEEDING TIME

*By courtesy of Mel Grundy*

# CHESTER ZOO

THE NORTH OF ENGLAND  
ZOOLOGICAL SOCIETY  
ZOOLOGICAL GARDENS

FOR A COMPLETE TOUR OF THE ZOO — Follow Nos 1-14 South Entrance,  
or Nos 16-116 from North Entrance then return to Nos 1-14.

**Chester Zoo is Open Daily  
from 9.00 a.m. until dusk.**

To  
LECTURE HALL  
& CLASSROOM  
(Reservations only)

1. SOUTH ENTRANCE
2. Peacock Enclosure
3. Wapiti Paddock
4. Coati Enclosure
5. Aviaries
6. Milk Bar
7. CORONATION HALL
8. CLOAKROOM, FIRST AID, TOILETS, INVALIDS' TOILETS, MOTHER AND BABY ROOM
9. CAFETERIA
10. Picnic Lawn
11. Bears
12. Jubilee Gardens (Noah)
13. Kiosk
14. AQUARIUM
15. NORTH ENTRANCE
16. PUSH CHAIRS, WHEEL CHAIRS, LOST CHILDREN
17. PARROT HOUSE
18. Free Flight Aviary
19. APE HOUSE
20. Shop and Kiosk
21. Aviaries and Picnic Lawn
22. TOILETS
23. Tuatara Exhibit
24. Peccaries
25. Waterbus Halt
26. Birds of Prey Aviaries
27. Condor Aviary
28. Jackal and Hyaena Enclosures
29. Animal Enclosure
30. Porcupine Enclosure
31. Coypus
32. Beavers
33. Giraffe House

34. Camel House
35. Waterbus Halt
36. TROPICAL, NOCTURNAL & REPTILE HOUSES
37. CHIMPANZEES
38. Floribunda Rose Garden
39. Mammal House
40. Gibbon Island
41. H.T. Rose Garden
42. Aviaries
43. Flamingos
44. Waterfowl Enclosure
45. Waterfowl Enclosure
46. Waterfowl Enclosure
47. Penguins
48. Sealions
49. Rock Garden
50. Polar Bears
51. Big Cat Enclosure
52. Waterfowl Enclosure
53. Anteaters
54. BIRD HOUSE
55. FOUNTAIN RESTAURANT
56. Ape Nursery
57. TOILETS
58. Lions
59. SOUVENIR SHOP
60. TOILETS
61. OAKFIELD RESTAURANT

62. P.O. Telephone
63. Aviary
64. Animal Enclosure
65. Animal Enclosure
66. Ornamental Rock Garden
67. Wallabies and Kangaroos
68. Kangaroo Enclosure
69. Aviary
70. Cheetahs
71. WATERBUS BOOKING OFFICE AND KIOSK
72. Waterbus Halt
73. Fountain Flower Gardens
74. Rose Garden
75. Red Lechwe
76. Red Lechwe
77. Deer or Antelope Enclosure
78. Waterbus Halt
79. Zebra and Deer Enclosure
80. Brown Bears
81. ELEPHANTS
82. Hippos
83. Tapirs
84. Small Mammal House
85. Waterfowl Enclosure
86. Ankole Cattle
87. Emus, Cranes and Flamingos
88. Outside Monkey Enclosures
89. Baboon Pens
90. Cat House
91. Tiger Enclosures

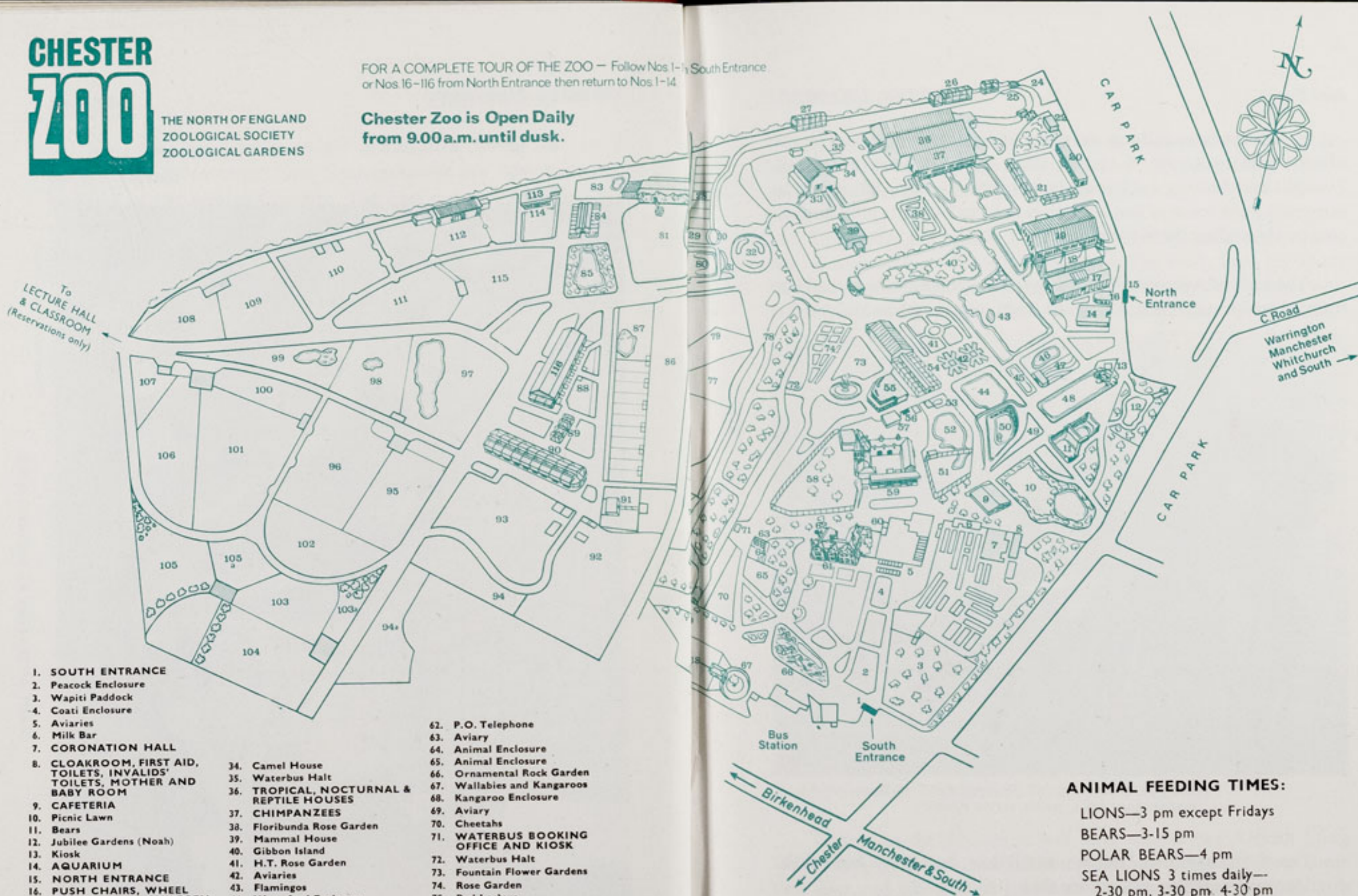
92. Antelope Ostrich
93. Antelope enclosure
94. Antelope enclosure
- 94a. Llamas
95. Zebras
96. Zebras
97. Waterfowl enclosure
98. Waterfowl enclosure
99. Waterfowl enclosure
100. Blackbirds
101. Wallabies
102. Antelope enclosure
103. Wallabies
- 103a. Reindeer

104. Pere David's Deer Paddock
105. Przewalski's Horses
- 105a. Onager
106. Arabian Gazelles
107. Musk Oxen
108. Bison
109. Pere David's Deer Paddock
110. Prairie Marmots, Alpacas
111. Antelope Enclosure
112. RHINOS
113. TOILETS
114. Mpila Snack Bar
115. Antelope Enclosure
116. MONKEY HOUSE

## ANIMAL FEEDING TIMES:

LIONS—3 pm except Fridays  
BEARS—3-15 pm  
POLAR BEARS—4 pm  
SEA LIONS 3 times daily—  
2-30 pm, 3-30 pm, 4-30 pm

ANIMALS MAY BE MOVED  
FROM TIME TO TIME



A fully grown adult can weigh up to 100 lbs. and reach a length of 8ft., with up to 3ft. 6 inches, taken up by its long, bushy tail. Eyesight and hearing are probably less than average, but it has an extremely keen sense of smell which is used to locate its prey through constantly sniffing the air and ground.

The pair of Anteaters in the Zoo get a substitute diet, made up from minced meat, Farex, Ideal milk, eggs, yeast extracts and Abidec.



*By courtesy of K. W. Green, A.R.P.S.*

FORMOSAN SIKA DEER WITH FAWN

The Formosan Sika Deer is a small deer, barely 3ft. high at the shoulder and weighing little more than 100 lbs.

In Summer the coat is a chestnut brown with white spots arranged in longitudinal lines. The Winter coat changes to a dark greyish brown. They have a prominent white buttock patch bordered by a black margin.

Antlers are grown by the males and usually appear in the second year, when they are unbranched. Each successive year they are 'cast'

—that is they fall off and are replaced by larger and more complex antlers; as the antler grows it is covered by a soft skin called 'velvet' which finally dries up and falls away in strips.

The fawns are usually born in late Spring—as a general rule one, though occasionally two, being born. The newly born fawns are dappled with white and are normally left hidden by the females, who return periodically to feed them. After a few days however they are capable of keeping up with their mothers and usually accompany them.

The collection in the Zoo numbers five, made up of a male, two females and their two female young born last year. They are entirely herbivorous, though appreciate a little of the Zoo's cereal concentrate daily.

### AQUARIUM NOTES

We would like to mention that the figures relating to the fish on page 2 of the January issue of the ZOO NEWS should have read 1,380 specimens of 193 species.. In addition approximately 1,000 young fish were reared behind the scenes during 1977; this was also the Silver Jubilee year for our Aquarium.

At the time of writing the Aquarium Keepers are making preparations for the coming season. Many of the tanks are being reset to accommodate the new specimens which will arrive before Easter, and which will include freshwater Sting Ray.

Visitors to the Aquarium will have missed our African Lung Fish (*Protopterus annecteus*). This exhibit was taken off show some time ago and allowed to hibernate in a specially prepared tank containing mud. Our specimen had been unwell but is now out of hibernation and making good progress. This species can hibernate for many months in the wild state and it has a primitive air-breathing organ which roughly corresponds with lungs. Consequently the Lung Fish can survive in stagnant water, even when the river dries up completely, which necessitates hibernation.

The Lung Fish lays large eggs which are very yolky and similar

to Amphibian eggs; the development is nearer to that of a Fish egg. The males undertake brood care, guarding the spawn and newly hatched young. A South American Lung Fish (*Lepidosiren paradoxa*) is also exhibited in the Aquarium in another tank.

Our Pearl or Lace Gourami (*Trichogaster leeri*) have produced one thousand fry. At the moment these fish are off show in the 'nursery' tanks. The body of this species resembles Mother of Pearl, covered in small shining dots overshot with an orange-red colour. It can attain a length of 4 inches (10 cms.). The species is sometimes called the Leeri Gourami.

We were also successful with the breeding of our Jewel Cichlid (*Hemichromis bimaculatus*) before Christmas. These youngsters are now on show in the Aquarium and making progress.

The Long-finned Batfish (*Platax teira*) has grown considerably. It swims about very gracefully in its tank and is so tame that it will come up and feed from the Aquarium Keeper's hand.

The South American Arowana (*Osteoglossum bicirrhosum*) which was acquired in December is making good progress. *Osteoglossum bicirrhosum* is one of the best-known of the South American species. The body is compressed and the anal fin extends the entire length of the body, tapering to a small tail. Arowanas have large scales which are deeply imprinted, giving a trellis-like effect. Two barbels protrude, which add to the streamlined and graceful appearance.

### LATEST ARRIVALS

The latest arrival in the Small Mammal House is a female Tayra, a native of South and Central America. She has settled down well and is feeding on a mixed diet including meat, various fruit and bread, and seems particularly fond of the grapes and bananas. We hope to introduce our male Tayra to her enclosure within the next few weeks.

Two mothers in our Monkey House can be seen nursing their

offspring. The Patas Monkey is a native of West Africa and the Lion-tailed Macaque is found in India. We are thrilled with the baby Lion-tail as this species is threatened with extinction in the wild and this is the first time one of these monkeys has been born at CHESTER ZOO

A pair of Arctic Foxes arrived recently and can be seen in their enclosure opposite the Oakfield Restaurant. At the moment they have lovely creamy-white fur but will soon lose this and reveal their rather dull-coloured Summer pelage.

The first baby Red Lechwe of 1978 can be seen in Enclosure No. 75/76. We hope to include an article about this critically endangered species in a subsequent edition of this magazine.

### WATERWAYS

The Waterways at CHESTER ZOO had become very choked and dirty over the years and it was decided to have them thoroughly cleaned out. Before this work could be started it was essential to drain away as much water as possible and this operation commenced shortly after Christmas.

The actual job of removing sludge, twigs and generally clearing out the canals commenced on the 9th January 1978. The machine used for this is called a 'Bogmaster'; this is a bulldozer with extra wide tracks. It dredged into the bottom of the water system and pushed the sludge to suitable points where the large mechanical digger removed it and loaded it into waggons.

Several problems were encountered, particularly regarding the drainage systems running under the waterways. Unfortunately two of the pipes were fractured and had to be repaired before we could start to refill the canals after cleaning had been completed. Whilst the waterways were empty we took the opportunity of inserting an improved drainage point, so that in future if this work has to be repeated, the operation will be much easier.

The opportunity was also taken to 'poll' the trees that overhung

the network; several members of the staff helped in this work, and visitors will no doubt appreciate the extra dimension which has now been given to the view. It is hoped that we may be able to plant some other species of trees on the Island in the near future, to enhance the appearance.

Although the main part of the work was completed on the 25th February, there still remains much to do, i.e. clearance of drives, making good flowerbeds and generally clearing the mud which has been left by the vehicles running through the zoo, as well as making good the positions where the heavy machines have been standing.

However, the lake is now being refilled and it is hoped to have the waterways back to normal by the 14th March; certainly they should be ready for the boats to be in service again in good time for Easter.

The total operation went quite well on the whole, without any major 'snags', but difficulty was experienced in finding a suitable site on which to deposit the sludge. It is estimated that 18,000 tons of sludge were carted away, so this was no small problem.

Some of our readers may wonder what happened to the fish and swans during this procedure. The fish were collected by the Aquarium staff; some were kept in suitable ponds in the Zoo grounds. Subsequently, these will be caught and returned to their original 'home', once we are assured that the water in the canals is again suitable to sustain them. The lakes will then be restocked with Golden Orfe, Tench and Carp,

The swans however were able to move along the waterways as the work progressed. The canals were never completely devoid of water so they simply moved from one section to another, as necessary. Nevertheless they will no doubt be much happier when they have only the boats to contend with!

### GARDENING NOTES

For two weeks from the 8th February there were very severe frosts; the lowest temperature recorded was  $-8^{\circ}$  C. and the temper-

ature was below freezing point every day. Fortunately, unlike many other parts of the country there was no snow, although a covering of snow on the young bedding plants would have helped to protect them against the very cold east winds which came at the end of the cold spell. This was the most severe frost for a number of years.

With mild weather again we are looking forward to some good colour from the flower beds, as frost damage does not appear to be as bad as at first feared. In the Glasshouses work is proceeding on the plants to be used in the Summer bedding schemes. Most of the seed has been sown and only the quick-germinating and growing plants such as Alyssum and French Marigolds are left to be sown late in March. Already many have been pricked out in seed boxes and some planted singly in peat pots.

The roses will be pruned early in March and this will be followed by forking in the mulch of manure that has been around them all winter. Afterwards the flower beds will be cleaned and the soil loosened with a hoe.

When the weather conditions are right the lawns will have their first cut; a dressing of fertilizer will follow in April. We use a combined fertilizer and weed-killer, which is applied with a small spreader machine.

The Tropical House has had the usual Spring-clean after the dark days of Winter. New plants have been added to those in the troughs and beds. The Palm and Rubber Trees have had their leaves sponged. A group of the cool-growing Orchid, Cymbidium, is staged just through the entrance to the Tropical House.

Spring flowering shrubs are now coming into bloom. One of the earliest is 'Forsythia Intermedia' and from this we have the best variety, 'Spectabilis' with masses of rich yellow flowers. Forsythia is easy to propagate from cuttings and flowers on the previous year's growth. One common name given to this shrub is 'Golden Bells'.

In severe winter weather we have had the problem of sparrows eating the flower buds.

Magnolia Soulangeana will be flowering in April. Two well-established shrubs are growing in the large shrubbery in front of the Oakfield Restaraunt. One variety is Soulangeana, which is white with a purple tinge on the outside of the flowers. The other is Lennei, with rich reddish purple flowers which are deeper in colour on the outside of the petals.

Other plants of Magnolia can be seen in the narrow shrubbery alongside the Parrot House.

On the Ornamental Rock Garden (No. 66 in the Guide) the dwarf Rhododendron Praecox with delicate mauve flowers will be at its best at the end of March this year.

Ribes, the flowering currant, will be flowering in April. The variety Pulborough Scarlet is growing in most of the shrubberies and has very deep red flowers. This shrub flowers on the previous year's growth, so it is very important to prune established shrubs back to shape after they have flowered. A number of shrubs which flower on the current year's growth need to be pruned hard back in March. Included in these are the Buddleia (Butterfly Bush), *Leycestria Formosa* (Himalayan Honeysuckle), *Spiraea Anthony Waterer*, *Hypericum* (Rose of Sharon).

Once established, most of the other shrubs need to be pruned only to keep them in shape and prevent overcrowding. These were pruned last November.

### SUBSCRIPTIONS

New readers of the CHESTER ZOO NEWS who would like to receive the magazine regularly may be interested to know that subscription forms can be obtained from the souvenir shops. An annual subscription (12 issues) costs £2.30, postage paid, which can either be handed over the counter at the shops or posted with the completed form to the Director-Secretary, Chester Zoo, Chester.

The following notice is displayed on several boards in the grounds

Please comply with it at all times

### FEEDING OF ANIMALS AND BIRDS

**IT IS AN OFFENCE** for any member of the public to offer food of any description to any Animal or Bird in Chester Zoo.

This regulation is made for the sake of the health of the Animals and Birds. Since the **NO FEEDING** rule was introduced, the number of deaths has dropped appreciably and sickness due to wrong feeding has been virtually eliminated.

What you may be offering to an animal may only be a sweet or an inoffensive piece of bread, but it can mean a death sentence for the animal. For example, a cough drop, which may relieve your cough, can cause instant death to many Animals and Birds in the Zoo.

You must not lose sight of the fact that you are only one of over a million visitors who visit the Zoo annually. If for instance an elephant had one bun from only one tenth of a day's visitors during the summer, it would eat between three and four thousand. You can guess the result.

We realise what a temptation it is for visitors, particularly children, to feed our Animals and Birds and this is why we invite members of the public to be present at the official feeding times.

This is a polite warning to you, asking you not to feed the animals. If you ignore it, the Keepers are authorised to ask you to leave the Gardens.

If you really love Animals and Birds, you will appreciate the wisdom of the ruling — **No feeding by members of the public.**

---

**PLEASE HELP US TO KEEP OUR COLLECTION OF  
ANIMALS NOT ONLY ALIVE BUT IN FIRST CLASS  
CONDITION**

Printed in England by  
W. H. Evans & Sons Ltd.  
Sealand Road Trading Estate  
Chester