



**Chester Zoo News**  
**AND GUIDE**

**THE NORTH OF ENGLAND ZOOLOGICAL  
SOCIETY, ZOOLOGICAL GARDENS  
UPTON-BY-CHESTER**

**October 1980**

**Price 15p**



# North of England Zoological Society

ZOOLOGICAL GARDENS, UPTON-BY-CHESTER

## COUNCIL

PROF. J. O. L. KING, Ph.D., M.V.Sc., B.Sc(Agric.), F.R.C.V.S., F.I.Biol.  
G. R. PRYOR, C.Eng. (Vice-Chairman) (Chairman)  
J. N. WILSON  
F. MOSFORD  
H. D. COOPER, F.I.M., A.I.B.  
A. J. BLAND, Dipl.Arch.R.I.B.A.  
R. P. OWEN, A.R.I.C.S.  
MRS. B. H. IRVINE  
F. S. CARSON, M.C., B.A.(Cantab.)  
DR. J. E. D. CHARLES-JONES, M.B., B.S., M.R.C.G.P.  
DINAH, LADY TOLLEMACHE  
W. KELSALL, O.B.E., Q.P.M.  
DR. J. R. BAKER, Ph.D., B.V.Sc., M.R.C.V.S.  
L. C. YOUNG, C.B.E., B.Sc.(Econ.)  
I. YULE, E.R.D., J.P.  
DR. M. R. BRAMBELL, Ph.D., M.A., Vet.M.B., M.R.C.V.S. (Director)

## CONTENTS

<i>page two</i>	Penguin's Progress
<i>page five</i>	Latest Births and Arrivals. In the News
<i>pages eight/nine</i>	Zoo Guide
<i>page twelve</i>	Notes from the Gardens
<i>page fifteen</i>	Tips from the Head Gardener. Subscriptions
<i>page sixteen</i>	Members' News

## ILLUSTRATIONS

<i>page two</i>	Penguin's Progress ( <i>Diagram</i> )
<i>page three</i>	"Prop up a Penguin!"—Jonathan Parkinson
<i>page six</i>	Green Tree Pythons
<i>page ten</i>	Red Lechwe Herd
<i>page thirteen</i>	Walter Worth ( <i>Head Gardener</i> )

## COVER

Tawny Owl

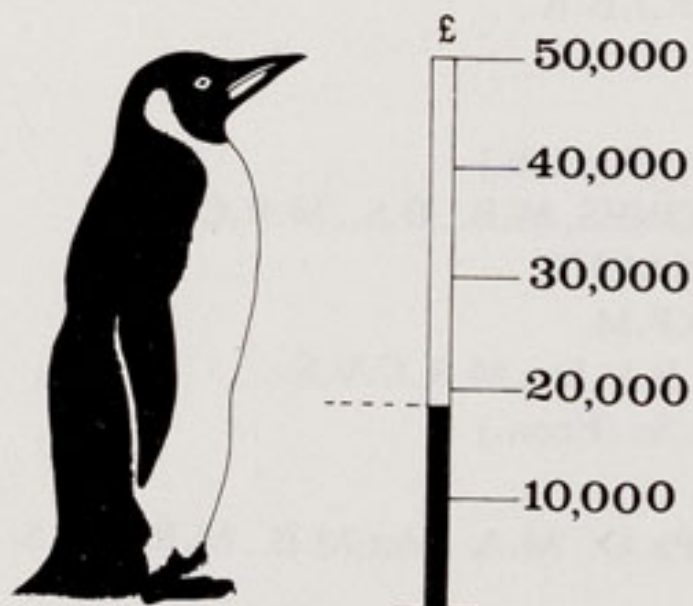
*By courtesy of K. W. Green, A.R.P.S.*

---

Annual Subscription — Three Pounds, postage paid  
Telephone Chester 20106

## Penguin's Progress

The Chester Zoo Penguin Appeal Fund now stands at £18,000 including cash banked, firm promises and goods for resale. Our Target is £50,000 for the building of a new pool and purchase of a breeding colony of about twelve birds.



### Poster Painting Competition

As part of our fund-raising activities, a poster painting competition was organised which attracted almost 5,000 entries from all over the North West of England. The three prize-winners have been chosen and attended the Zoo on 30th September for an official prize-giving ceremony. However, this was not the usual prize-giving with which we are all familiar—for the winners were asked to bring their wellington boots! They were given shovels so that the clearing of the site was officially begun by their starting the work.

The prize for the overall winner included a day out to the Zoo for the winner and his/her family, a photographic portrait, £25 worth of sports equipment, a penguin scarf and a soft toy penguin. The runners-up received a penguin scarf and soft toy penguins. The winners were:—

*Overall Winner:*

Miss Lorna Holmes  
Stretford, Manchester

Miss Angela Cooper  
Droylsden, Manchester

Mr. Lawrence Langton  
Liverpool

Mr. Rajesh Gmadiali  
21 Armcliff Terrace, Bradford



### What You can do to Help

Chester Zoo is a totally self-funding charity and you may already know that in May, for the first time in our history, we have gone to public appeal to raise the target amount of £50,000. As an education and entertainment exhibit, penguins are second to none and are great favourites with zoo visitors. Schools have already raised funds, and examples are: sponsored spells, walks and swims; selling ice cream and colouring-books at break; jumble and toy sales, etc. . . .

A prize has now been decided upon for the school which raises the most money (based on money raised per head of child). This is as educationally based as possible and we hope that schools and children will be able to help us to reach our TARGET £50,000.

### Prize

1. Up to 30 children to visit Penguin Biscuit factory in Manchester. School chooses children.
2. A talk by Dr. Bernard Stonehouse of the University of Bradford, who is a world expert on penguins and polar animals.
3. We will provide a number of experts from the Zoo to give talks on subjects of the school's choice.
4. The school's principal and two children to come to the opening ceremony of the penguin enclosure.
5. A 3ft. soft toy penguin.
6. A special certificate from 'Keep Britain Tidy' to be presented to the school by the Director of 'Keep Britain Tidy'.
7. The name of the winning school on the side of the enclosure.
8. We shall also arrange for the class of children (irrespective of school) who raise the most funds to have a free visit to the Zoo.

Coffee mornings and produce sales have also been successful. Two local newspapers have been running appeals for their children's clubs to reach their own "mini-target". Anyone can help. You could even run your own "mini-target", either with a cash limit to reach or, over a period of time, to finish on a set date.

Our Appeal Fund Co-ordinator is Mrs. Ena Parkinson, and she is available to assist anyone who may have queries about the Appeal or what they can do to help us to reach our target.

## Latest Births and Arrivals

### Mammals

1 Eland ( <i>Taurotragus oryx</i> )	Marwell Zoo
1 Formosan Sika Deer ( <i>Cervus nippon</i> )	Marwell Zoo
4 Coatimundi ( <i>Nasua nasua</i> )	Marwell Zoo
3 Red Lechwe ( <i>Kobus leche</i> )	Births
2 Raccoons ( <i>Procyon lotor</i> )	Purchased

### Birds

5 Rheas ( <i>Rhea americana</i> )	Hatched
4 Barn Owls ( <i>Tyto alba</i> )	Hatched
1 Lesser Patagonian Conure ( <i>Cyanoliseus patagonus</i> )	Exchange

### Reptiles

2 Burmese Brown Tortoises ( <i>Geochelone emys</i> )	Exchange
1 Green Tree Python ( <i>Chondropython viridis</i> )	Presented

## In the News

The article published in last month's *Zoo News* written by Alan Woodward explaining the hand-rearing of a young wallaby caused considerable local interest. A number of local newspapers and a radio station interviewed Keeper Alan Woodward, who explained some of the difficulties—and some of the lighter moments—in caring for the youngster.

The 'Cheshire Life' magazine have recently done an interview with Mr. Worth, the Head Gardener, about himself, his work and the gardens at Chester Zoo. A picture of Walter Worth, taken for the article, is shown on page 13.

### Donations

The Reptile House has recently received two generous donations. The first was from Mr. C. L. Bannister, of the Isle of Man. Mr. Bannister's son had kept two beautiful Indian Pythons (*Python*



GREEN TREE PYTHONS

*By courtesy of J. Whitworth*

*molurus*) and these were donated, together with a large tank. The snakes have settled down very well and the tank is being put to good use as extra accommodation.

Mr. L. H. Bland, a Member of the North of England Zoological Society, kindly donated the Green Tree Python listed above. We now have three of these lovely snakes. A pair in their characteristic coiled position are shown on the opposite page. The skin is a bright emerald green; a creamy stripe runs the length of the body, with spots of the same colour to either side.

The new animals can be seen in the Tropical House, Zoo Guide No. 36.

### **New Quarantine Vehicle Delivered**

On 17th September, Chester Engineering Ltd. delivered a very special vehicle to the Zoo. Designed by Dr. Brambell and built by Wally Gillam and Tony Crump of Chester Engineering, a detachable crate has been made to fit on to the Zoo's supply vehicle, in place of the normal freight-carrying body we use most of the time. The new crate incorporates the very stringent specifications demanded by the Ministry of Agriculture for carrying animals in quarantine and is the first of its kind in the country. In effect, we have now got two vehicles for the price of one and a half.

### **First Consignment for New Vehicle**

The first animals to be carried in the new quarantine vehicle will be a pair of Polar Bears (*Thalarctos maritimus*) from Copenhagen. These young Polar Bears will be the first youngsters at Chester for many years.

Our last surviving bear—a female—was born in Antwerp in 1947 and arrived at Chester later that same year. She is now aged 33 and is getting very old. We previously had four Polar Bears, a female, aged 30, died in 1977, and a male died in 1976; he was aged 26. Sadly, our remaining female lost her companion—another female—last year. We have successfully bred these immensely popular bears during past years and very much hope that visitors will have

# CHESTER ZOO

THE NORTH OF ENGLAND  
ZOOLOGICAL SOCIETY  
ZOOLOGICAL GARDENS

FOR A COMPLETE TOUR OF THE ZOO — Follow Nos 1-116 from South Entrance.  
or Nos 16-116 from North Entrance then return to Nos 1-14

**Chester Zoo is Open Daily  
from 10a.m.**



## 1. SOUTH ENTRANCE

2. Peacock Enclosure
3. Wapiti Paddock
4. Raccoon Enclosure
5. Aviaries
6. Milk Bar
7. CORONATION HALL
8. CLOAKROOM, FIRST AID, TOILETS, INVALIDS' TOILETS, MOTHER AND BABY ROOM
9. CAFETERIA
10. Picnic Lawn
11. Ornamental Garden (under construction)
12. Jubilee Gardens (Noah)
13. Kiosk
14. AQUARIUM
15. NORTH ENTRANCE
16. PUSH CHAIRS, WHEEL CHAIRS, LOST CHILDREN
17. PARROT HOUSE
18. Free Flight Aviary
19. APE HOUSE
20. Shop and Kiosk
21. Aviaries and Picnic Lawn
22. CLASSROOM
23. TOILETS
24. TUATARA EXHIBIT
25. Peccaries
26. Birds of Prey Aviaries
27. Condor Aviary
28. Wild Dogs
29. Animal Enclosure
30. Porcupine Enclosure
31. Coypus
32. Beavers
33. Giraffe House

34. Camel House
35. Giant Tortoise Paddock
36. TROPICAL AND REPTILE HOUSES
37. CHIMPANZEES
38. Floribunda Rose Garden
39. Zebra House
40. Waterfowl Island
41. H.T. Rose Garden
42. Aviaries
43. Flamingos
44. Waterfowl Enclosure
45. Site for new Penguin Pool
46. Site for new Penguin Pool
47. Site for new Penguin Pool
48. Sealions
49. Rock Garden
50. Polar Bears
51. Big Cat Enclosure
52. Waterfowl Enclosure
53. Capybara
54. BIRD HOUSE
55. FOUNTAIN RESTAURANT
56. Animal Exhibit
57. TOILETS
58. Lions
59. SOUVENIR SHOP
60. TOILETS
61. OAKFIELD RESTAURANT & G. S. Motterhead Memorial Gds

62. P.O. Telephone
63. Gibbons
64. Arctic Fox Enclosure
65. Serval Enclosure
66. Ornamental Rock Garden
67. Wallabies and Kangaroos
68. Kangaroo Enclosure
69. Paddock
70. Cheetahs
71. WATERBUS BOOKING OFFICE AND KIOSK
72. Rose Gardens
73. Fountain Flower Gardens
74. Rose Garden
75. Red Lechwe
76. Red Lechwe
77. Deer or Antelope Enclosure
78. Zebra and Deer Enclosure
79. Zebra and Deer Enclosure
80. Brown Bears
81. ELEPHANTS
82. Hippos
83. Tapirs
84. Small Mammal House
85. Waterfowl Enclosure
86. Ankole Cattle
87. Emus, Cranes and Flamingos
88. Outside Monkey Enclosures
89. Baboon Pens
90. Cat House
91. Tiger Enclosures

94. Reindeer Enclosure
- 94a. Llamas
95. Antelope Paddock
96. Antelope Paddock
97. Waterfowl Enclosure
98. Waterfowl and Ax
99. Waterfowl Enclosure
100. Blackbuck
101. Wallabies
102. Ostrich
103. Wallabies
- 103a. Animal Enclosure

104. Pere David's Deer Paddock
105. Przewalski's Horses
- 105a. Onager
106. Arabian Gazelles
107. Guanaco
108. Bison
109. Pere David's Deer Paddock
110. Prairie Marmots, Alpacas
111. Antelope Enclosure
112. RHINOS
113. TOILETS
114. Mpila Snack Bar
115. Antelope Enclosure
116. MONKEY HOUSE

## Facilities

**WATERBUS.** Enjoy a trip around the Zoo. Tickets available at Waterbus Kiosk (No. 71 on plan).  
**PUSH CHAIRS AND WHEELCHAIRS** can be hired near the NORTH ENTRANCE (No. 16 on plan).

**LOST CHILDREN** are taken to building No. 16 on plan.

**FIRST AID** Cloakroom (No. 8 on plan).

**TOILETS.** Invalids' Toilets (No. 8 on plan).

## Catering (subject to revision)

OAKFIELD RESTAURANT (Table Licence)—No. 61 on plan.  
FOUNTAIN RESTAURANT (Party Catering)—No. 55 on plan.  
CAFETERIA (Self Service)—No. 9 on plan.  
MPILA SNACK BAR (Light Meals)—No. 114 on plan.  
RAINBOW KIOSK (Picnic Lawn adjoining)—No. 20 on plan.

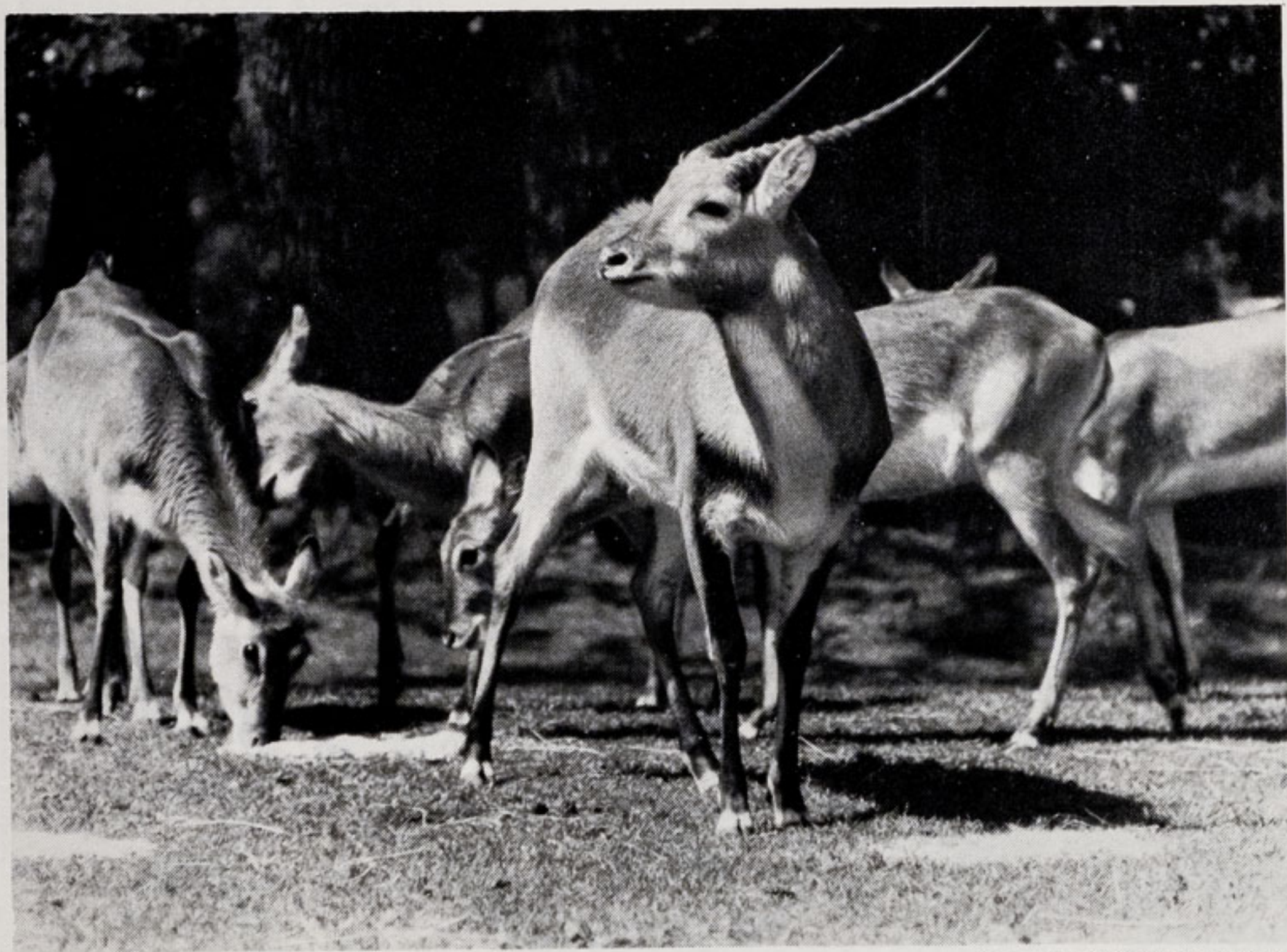
Wet weather facilities for visitors wishing to eat their own food are provided at the CORONATION HALL No. 7.

Snack Bars and Picnic Lawns are situated throughout the ZOO

## Feeding Times

LIONS—3 p.m. except Fridays  
SEA LIONS—3 times daily—2.30 p.m.—3.30 p.m.—4.30 p.m.

ANIMALS MAY BE MOVED FROM TIME TO TIME



RED LECHWE HERD

*By courtesy of K. W. Green, A.R.P.S.*

the opportunity of again seeing the delightful cubs in future years. A lot of work has been going on to repair and improve the Polar Bear Pool and their dens and we expect the bears to arrive by the end of October.

### **On Breeding Loan from Marwell**

We recently published a list of animals which we were looking for. At the time, we needed a male Eland and a female Formosan Sika Deer. Happily, Marwell Zoo have been able to come to our assistance by letting us have the animals required on breeding loan. This latest addition brings our group of Eland (*Taurotragus oryx*) to four, and they can be seen in Enclosure Nos. 96 and 102.

The Formosan Sika Deer male brings our group to five. We lost our original male in 1979. The youngsters are very pretty and we are looking forward to seeing these fawns in the collection again. This attractive group are in Paddock No. 77.

These animals have been obtained under the Joint Management of Species Committee. This body comprises Directors and Curators of some of the British Zoos who have come together to ensure the circulation and best possible use of breeding stocks in zoos. With this more concentrated approach to limited zoo stocks, particularly now that animals and birds are rarely, if ever, taken from the wild, it should be possible to determine the destiny of at least some of the rare and endangered species in our care.

Also placed here on deposit by Marwell Zoo are four Coatimundis. We had hoped to keep them in the Coatimundi Enclosure No. 4, but they have proved too agile for that part of the Zoo, and we are considering where best to make their home.

### **Red Lechwe Births and Cover Picture**

The births of three Red Lechwe (*Kobus leche*) brings our total of these handsome Antelope to 25. Visitors may like to see them in the Red Lechwe Paddocks (75 and 76). A picture of our herd is shown on page ten.

As can be seen from the Births and Arrivals list, we have been successful in hatching four more Barn Owls. With these latest additions, the total hatched this year is eleven. Our owl collection (comprising ten species) is always very popular with visitors, and the Owl Aviaries (Guide No. 5) are well worth a visit. Our cover picture shows a Tawny Owl (*Strix aluco*).

## Notes from the Gardens

The Gardeners will make a start early this month to replant the flower-beds with bulbs and the hardy Spring-flowering plants. As this will take all month to do, the most concentrated area of flower-beds will be left till last so as to let the visitors have the benefit of seeing some colour for as long as possible before any bad weather that might come. This particular area is the Fountain Flower Gardens (No. 73).

Other flower-beds which have been changed will have flowering Pansy in by now and, if the weather is good, will go on flowering well into December. One of the most popular plants this Summer has been the *Aster capense*, a bushy plant, two feet tall with blue flowers—this is used as a dot plant. It is propagated from cuttings, and we grow 80 plants. The name *Aster* comes from the Greek Aster—meaning star—which the flower is supposed to resemble.

Another plant similar to this, but much smaller, is *Felicia ameloides*, which we grow as a bedding plant, about 500 in all. This is propagated from cuttings taken in August in the same way as Geraniums. The Dahlia border, containing 300 plants, will be left until near the end of October. These are named varieties varying from three to five feet in height and are planted six to ten in groups. The border is near the Aviaries (No. 5).

The half-hardy plants in the South American Garden, i.e. *Nicotiana*, will remain there until the frost kills them, as none of our Spring bedding plants originates from South America.

The *Antirrhinums* were later in coming into flower this year, but they have been very good and have not had the problem of *Antirrhinum* rust which attacks the leaves and eventually defoliates them. In past years, we have had this happen in patches towards the end of August, leaving unwanted gaps in the border. The strain of *Antirrhinum* we are growing is *F1 Coronette Hybrids*.

The *Gazania* grown from seed this year have been a good mixture of colours. They are planted in a small bed near the South American Garden and will be left there until the beginning of November. This



plant enjoys a sunny position, opening when the sun comes out. The *Gazania* on the rockeries are propagated from cuttings each year, so we can plant them in groups of separate colours.

A deep pink variety of *Verbena* was grown this year by the Aviaries and Lawn, Guide No. 21. This one is a hybrid and the variety is *Tenerife*. After planting, it spreads rapidly and likes a good, sunny position.

Cuttings have been rooted along with other varieties of *Verbena*, *Lawrence Johnson*, *Hidcote Manor* and *Loveliness*, and these will be used as stock plants from which cuttings will be taken at the beginning of next February, to make plants for the 1981 Summer. The mixed annual *Verbena* is sown in March.

Bedding Dahlia grown from seed this year put on a lot of growth after being planted out, due to a wet season, and were later in producing a lot of flower. Two varieties were used: *Early Bird Mixed*, with the green leaf, and *Redskin*, with a deep-bronze leaf.

*Matricaria capensis* variety Golden Ball was grown this year, and used as an edging and as a dot plant in some beds. It has rich butter-yellow ball-shaped flowers in thick clusters, the whole plant growing from ten to twelve inches high. *Matricaria* is classed as a hardy plant and very often self-germinating seedlings will come up the following year. There are several other plants which, if allowed to seed, will come up year after year as their seed survives the Winter. Among these are the common white *Alyssum*, *Flowering Tobacco* and even the *Verbena venosa*. Another plant, *Polygonum capitatum*, was planted on the rockery ten years ago—none has been planted since, but we still have seedlings coming up every year!

*Oenothera* common name Evening Primrose was planted on the island dividing the boatway two years ago, and this year it flowered. It is hoped this biennial will self-sow in future years.

## Tips from the Head Gardener

- ☆ Wall flowers should be planted in the early part of October, so that they can get themselves established before the colder weather comes.
- ☆ If you are thinking of buying Roses, pay a visit to your local nursery. Catalogues do not always give a gardener a really good idea of colour, height and other characteristics. By looking in your nursery you will be able to see what the plant is really like, and save disappointment later in the year. You will also get an idea as to whether any particular variety is more susceptible to mildew than another. A better idea of plants for an herbaceous border can also be obtained if you see them growing in the nursery first.
- ☆ Now is a good time to give lawns a dressing of an Autumn fertiliser.

Walter Worth  
*Head Gardener*

---

## Subscriptions

CHESTER ZOO NEWS is at present being produced every month, and readers who would like to receive the magazine regularly can obtain subscription forms at the Souvenir Shops, or the Office. The current charge for twelve issues, including postage, is £3.00 per year.

Completed forms can be handed in to the Souvenir Shops or posted to Mrs. Sandra J. Elliott, Chester Zoo News, Chester Zoo, Chester CH2 1LH.

## Members' News

The 1980/81 season of Members' Meetings starts in October. The remainder of the programme will be forwarded as soon as possible. The dates to note are:—

**18th October, 1980**

“NORFOLK BROADS I HAVE KNOWN”

Mr. Peter M. C. Stevens, B.Sc., M.I.Biol.

*Curator of Birds at Chester Zoo*

**15th November, 1980**

“CONSERVATION IN THE SUDAN AND NIGER”

Mr. D. M. Jones, B.Vet.Med., B.Sc., M.R.C.V.S.

*Veterinary Surgeon at London Zoo*

**21st February, 1981**

“GREY SEALS ON NORTH RONA”

Dr. J. R. Baker, Ph.D., B.V.Sc., M.R.C.V.S.

*Member of the Society and Council  
of the North of England Zoological Society*

The usual arrangements apply regarding guests and the Zoo minibus will be operating from the North Entrance and the Oakfield Restaurant to the Lecture Hall. Members requiring transport should make their way to either of these points before 2.00 p.m., in order that everyone can be seated by 2.30 p.m.

We look forward to seeing you.

\* \* \* \* \*

*Readers interested in Membership of the Society can obtain details  
from the Membership Office.*



Printed in England by  
W. H. Evans & Sons Ltd.  
Sealand Road Trading Estate  
Chester