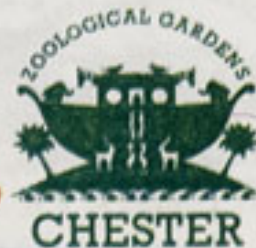


No. 14

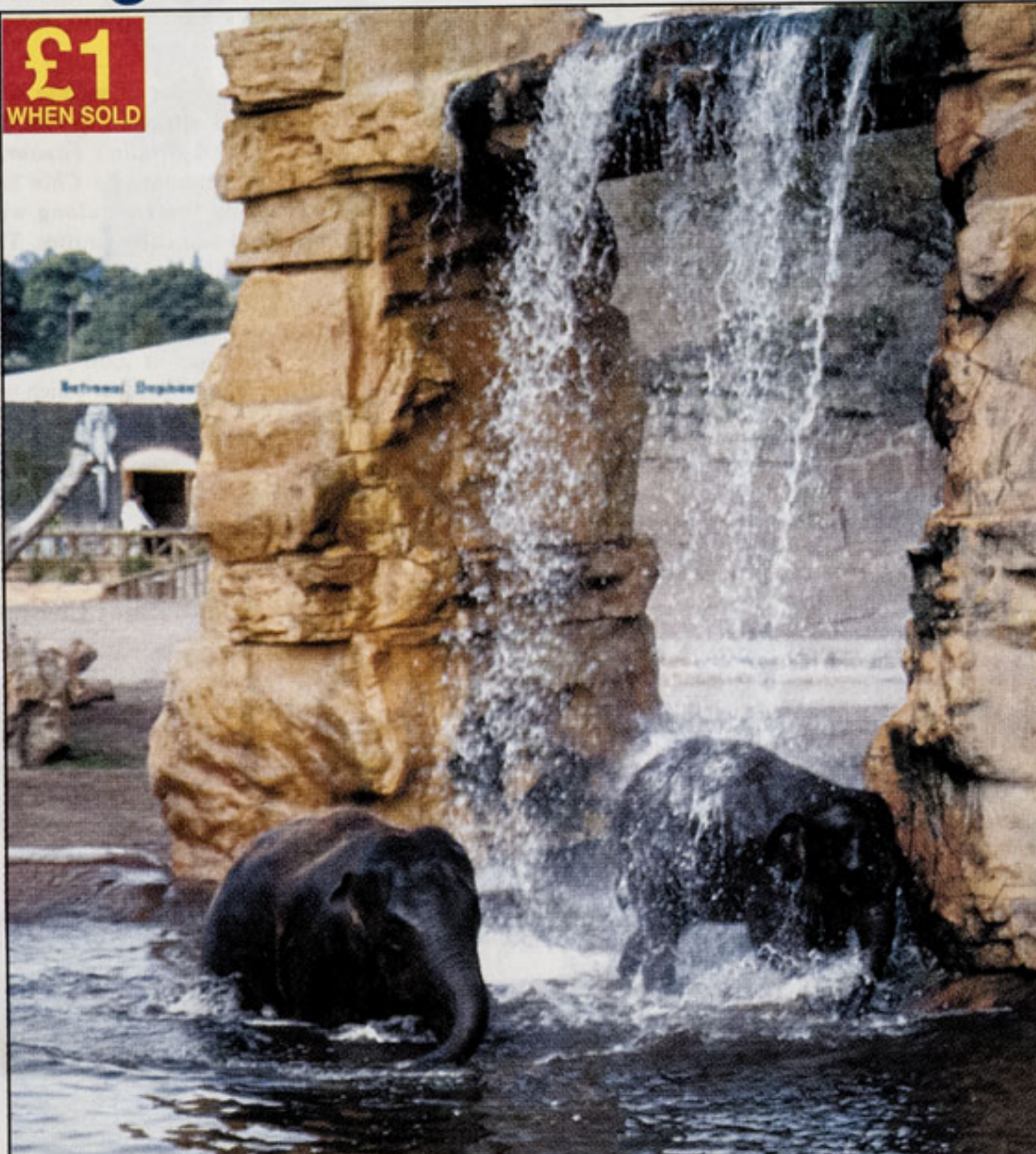


CHESTER ZOO NEWS



CHESTER
Spring
2001

Regional Tourism and Access News



£1
WHEN SOLD

Save ££££

24 VALUABLE
COUPON OFFERS
Pages 49-54

£1,300

worth of prizes
in **Coca-Cola**
Elephant
Colouring
Competition

Contents

- p2. Lord Mayor's Foreword
- p6. Best days for kids
- p8. Zoo View
- p9. Honours
- p9. Weddings
- p10. Hands On
- p10. Fun Days
- p13. It's Cheshire
- p14-15. *Spirit of the Jaguar*
- p16. Green Fingers
- p16. Paradise Island
- p18. Animal Adoptions
- p20. Favourite Days Out
- p22. Become a Member
- p23. Access for all
- p28. Jumbo Competition
- p32-3. Photo Competition
- p34. Zoo Events Guide
- p36. Zoo Vet's Day
- p40. Presenters
- p48. Round the World
- p49. Roundabout A-Z Guide and Money saving offers



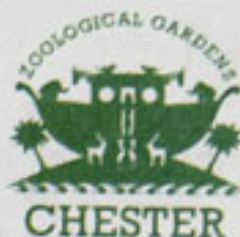
SEE
OUR BABY
ELEPHANTS



Spirit of the Jaguar
opens Spring 2001

**SAVE UP TO
£10 ON CHILD
ADMISSION
TO THE ZOO**
See Page 53

UK's No.1 ZOO



LORD MAYOR OF CHESTER'S FOREWORD

Chester is a city of national and international importance and our history and heritage are important elements of why people visit our city. Our historic built environment allows visitors to explore 2000 years of architectural and cultural development.

It is important to recognise the valuable contribution of those people from our past who have helped to shape and influence our visitor attractions such as the Rows, the River Dee, the Roman Walls, the Roman Amphitheatre, the Cathedral and the Roodee, which is the country's oldest race-course still in use. These visitor attractions make Chester distinctive, unique and special to all of us.

Our location provides visitors with good access to road and rail links from anywhere in the country and we are only a short drive from Manchester and Liverpool and the emerging Harwarden Airports. The beauty of the Cheshire countryside surrounds us as we nestle in the natural backdrop of the Welsh hills. I believe we are at the geographical heart of Great Britain.

Chester Zoo is one of Chester's greatest attractions and is world famous for its work in animal welfare and conservation. The Education Division of the Zoo complements this vital work by helping to improve our knowledge and aware-

ness of the natural environment and the animal kingdom. Detailed guides and regular newsletters, combined with field trips, keep children and adults informed of the latest developments at this all year round destination.

The Zoo is aware of the problems faced by disabled people and is deeply committed to making the grounds accessible to everyone. This commitment has been recognised and acknowledged by being highly commended in the Queen Elizabeth's Foundation EASE Awards in 1999.

Millennium year was a year of success with over a million visitors attracted to Chester Zoo, which was named *Britain's Favourite Wildlife Site*. Baby elephants *Po Chin* and *Assam* arrived during the year along with two baby camels and two baby giraffes. The *Twilight Zone* Bat Cave and *Islands in Danger* became increasingly popular and complement the tranquillity of the Roman Garden. This year Chester Zoo plans to open "*Spirit of the Jaguar*" project which will be the biggest jaguar breeding facility in Europe.

It is with pride that I am able to write the foreword to Chester Zoo News 2001. I hope everyone who visits Chester has the opportunity to enjoy the experience and adventure of Chester Zoo

Enjoy our heritage. Enjoy Attractions. Enjoy Chester.

FOREWORD



by
Reggie Jones
Lord Mayor of Chester &
Admiral of the Dee



Afonwen

Craft and Antique Centre

World of Wood As 'N' When Antiques

Spectacular selection of quality china, crystal, glass, silver, pottery figures, Oak Walnut and Mahogany furniture and unusual curios. Delivery available throughout Wales and the Borders. Storage service available

Specialists in Antiques and traditional country pine, Welsh dressers, Solid pine tables, chairs & bedroom furniture - all hand waxed and polished

Telephone
(01352) 720965

Looking for Something Special

**UP TO
50% OFF**

Then come & see us!!

1000's of unique quality gift ideas for all the family, from pottery & Celtic jewellery, Amber jewellery, fabulous display of silk flowers and gift baskets

(truly unique gift ideas)

Ready made gifts for everyone -
Fleeces, Jackets, Cards,
Handbags and leather goods

**There really is just
too much to see!!!**

EDENSHINE Delights Licensed Restaurant

The Restaurant for friends to meet for coffee, lunch or a special treat.....

Select from our tempting menu to include our popular traditional specials plus new dishes, choose from meat, fresh fish and vegetarian or a lightbite for smaller appetites.

Delicious hot or cold desserts all made on the premises plus a huge array of cakes, scones and ice cream sundaes to complement.

Celebration cakes made to order for all occasions. Take home party menu, includes savoury & sweet items. Last orders to kitchen 4.45pm.
Licensed Restaurant.
NO SMOKING



**FREE
PARKING**
Well sign posted
from the A55 & A541

**North Wales' and the Borders'
Premier Antique Centre**



**Afonwen, Caerwys, Nr Mold • Restaurant Tel: 01352 720797
Craft Centre Tel: 01352 720965**

Open:
Tuesday - Sunday
9.30am - 5.30pm
CLOSED -Mondays

ANIMALS ARE OUR ONLY SHAREHOLDERS



Get

About

with Merseytravel



Six great booklets from Merseytravel to help you make the most of Merseyside by bus, train and ferry...



Out & About

48 pages of great ideas for things to do and places to go

Walkabout
MERSEYSIDE COAST & COUNTRY

1

The Sefton Coast - 5 easy walks through sand dunes and country

Walkabout
MERSEYSIDE COAST & COUNTRY

2

The Wirral Peninsula - Seaside and common for the casual walker

Walkabout
MERSEYSIDE COAST & COUNTRY

3

Knowsley & St. Helens - Exploring inland Merseyside on foot

Walkabout
MERSEYSIDE COAST & COUNTRY

4

Green Hearts - Walk through city and countryside with BBC Radio Merseyside's Ron Freethy

Rideabout

Get to five traffic-free cycle routes on Merseyside by train



All these booklets are free from Merseytravel Ticket & Information Centres and Merseyrail Stations or we'll send you one post free, just phone the Brochure Hotline on...

0151-330 1066

For travel information, ring the Merseytravel Line on 0151-236 7676, 8am to 8pm, 7 days a week. (Minicom System available).



Merseytravel

24 HATTON GARDEN, LIVERPOOL L3 2AN



CHESTER - ENGLAND'S WALLED CITY

CHESTER VISITOR CENTRE

Vicar's Lane, Chester CH1 1QX



Probably the Biggest Visitor Information Centre in Britain

The ideal starting point for exploring Chester

- Guided Walks including Ghosthunter Tours and Roman Soldier Patrols
- Café serving delicious hot and cold foods and drinks
- Brass rubbing for all the family to enjoy
- Candle making - try your hand at this traditional craft
- History of Chester displays
- Video show - the history of Chester through the ages
- World of Names - the origins of family and first names
- Gift shop - great gifts for every occasion
- Tourist Information Centre - offering maps, guides, tickets for bus and coach tours, theatres and events
- National Express Bookings
- Street Envoys HQ
- Accessible toilets
- Baby Changing facilities
- Open daily except Christmas Day, Boxing Day and New Year's Day
- Rows of Chester Exhibition
- Civic Trust Millennium Festival of Buildings Exhibition
- Admission free



CHESTER VISITOR CENTRE



Craftsman at work



Chester Visitor Centre is located in a Grade II listed building. It was originally a school in Victorian times, and overlooks one of the largest Roman amphitheatres in Britain. The Chester Visitor Centre is close to Grosvenor Park and its magnificent floral displays, St John's Church and its Anglo-Saxon ruins and the River Dee where the oldest rowing regatta in the world takes place every year.

The building is five minutes walk from the city centre, where you will find the most complete City Walls in Britain, the unique two tier Rows shopping galleries, the magnificent 900 year old Cathedral and the Eastgate Clock - the most photographed time piece in the world after Big Ben. The oldest racecourse in Britain is just ten minutes walk away.

Tel: 01244 402111 Fax: 01244 403188
e-mail: tis@chestercc.gov.uk



TWENTY TOP PLACES TO TAKE THE CHILDREN



The Cheshire Military Museum is at the Castle - Open from 10am - 5pm daily with a modest admission charge. REOPENING FOR EASTER



There is a wonderful display of military memorabilia dating back to 1690. Learn about the County's Regiments including - the regulars and volunteers of the 22nd (Cheshire) Regiment, and the volunteers of the Cheshire Yeomanry. Art, embroidery, medals, badges, uniforms and special exhibitions



BLACK SHEEP GALLERY

7th ANNUAL EXHIBITION OF WILDLIFE ART

This exhibition actively supports the conservation work of Africat

Sunday 18th March to Sunday 29th April 2001

Featuring work from many top UK and International wildlife artists

A MONTHLY CHANGING PROGRAMME OF EXHIBITIONS

ADMISSION - FREE

BLACK SHEEP GALLERY, OLD STABLE YARD, HAWARDEN CASTLE, HAWARDEN, FLINTSHIRE CH5 3NY.
Tel/Fax: (01244) 535 505. OPENING TIMES: TUES-FRI 10AM-6PM. SAT-SUN 11AM - 5PM. CLOSED - MONDAYS.

CHESHIRE FARM REAL DAIRY ICE CREAM & THE COUNTRY KITCHEN

FREE ADMISSION

See the Cows being milked!

Farm Lunches, Teas, Coffee & Gifts. Open every day.

01829 770995



Newton Lane, Tattenhall, Nr Chester

Browns signs from A41

OPEN TO VISITORS

OPEN TO VISITORS
Open daily April 1st-Oct 31st 11.30am-4.30pm (Except Thursdays)

WINTER OPENING
Nov 1st-March 31st Wed and Sun only 11.30-4.00pm

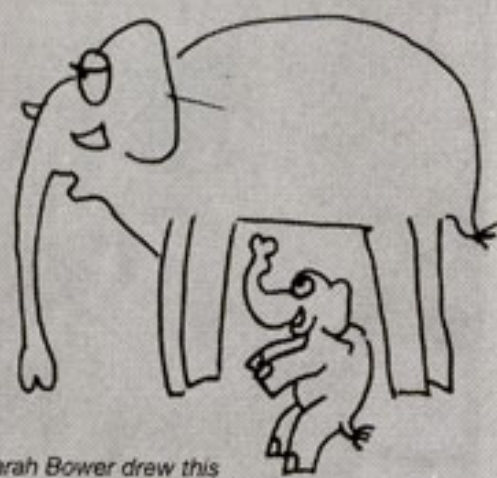
Hillside Bird Oasis

Mobberley, Nr Knutsford, Cheshire
(Adjacent to the Roebuck Inn)
Tel: 01565 873282



An unusual and varied collection of birds including penguins, pelicans, flamingos and waterfowl in an award winning setting.

There's nothing like the **BIG SCREEN** cinema experience! Nearest to the Zoo is the **iWERKS** screen at the **Coliseum at Cheshire Oaks** - **iWERKS 0151 356 2261**. See p 25. **Borders Bookshop** great for ideas.



Sarah Bower drew this

Mersey Ferries are a great introduction to Liverpool and the world of shipping. Try this way round - start

at Seacombe in the Wirral (easier parking too) and take the ordinary ferry to Liverpool - spend some time in the amazing **Maritime Museum** at Albert Dock - about 200 metres from the Ferry Terminal, and as an unexpected treat on your return - try the **Seacombe Aquarium**. **0151 - 630 1030**. There are also special ferry trips - Heritage Cruises. Dress warmly, and have some diversions in case the weather drops down on you!

The **Chestnut Centre** near Chapel en le Frith in Derbyshire is high on the favourites list of our Junior Members - and no wonder. Owls and Otters (including the only Giant Otters in the UK - 'as big as Sealions - honest') in a great setting. But take wet weather precautions too as you are almost on the roof of England! **01298 814099**

Be a **Roman Soldier** for a patrol in Deva (aka Chester) and get a Legionary's certificate to prove it. Chester Visitor Centre in Vicar's Lane. **01244 402111**. Complete your Roman experience at the **Zoo** in the Roman Garden! See the **Birds of Prey fly** - Blakemere Craft centre - Chester Road, Sandiway **01606 883261**.

Grab a **Guide Friday** open top bus tour around the City of Chester - you can get on and off again whenever you wish - and your tickets get you some valuable discounts too. See page 21

Jodrell Bank with its huge Lovell radio space telescope. Handy for the M 6 (Junction 18) Planetarium Show, *Cheshire Family Attraction of the Year* in the Good Guide to Britain 2001. Lots of hands on. Good picnic site and the arboretum too. **01477 571339**.

Windmill Farm and the WWF's **Martin Mere** make a great pair of attractions for children - with wonderful birds to view, feeding opportunities and a great play area at Martin Mere, and hands on with baby animals, and the feel of a real farm half a mile to the west. Burscough is the nearest town on the A 59. Martin Mere **01704 895181**, Windmill Animal Farm **01704 892282**.

Ironbridge Gorge at Telford in Shropshire (M6 then M54) has enough for several days out (nine attractions), but our favourite was Blist's Hill Victorian Working Town. **01952 432 166** or website www.ironbridge.org.uk

Liverpool Football Club Museum and Tour Centre for all those with a red view of life. Anfield. **0151 260 6677** - see page 38.

Twycross Zoo in the Midlands - near Atherstone on the M 42 J 11. Compare *Chang's* two baby elephants (*Tara* and *Karishma*) there with our pair. Great apes, play areas and good for picnics. You may have seen the TV series *Molly's Zoo* and now there's the book too (in stock at Borders bookshop where I got mine!). **01827 880250**.

Wigan Pier - with its Victorian Schoolroom, boat trips on the canal and amazing steam engine in Trencherfield Mill is always a favourite of ours with its **Museum of Memories** and its companion - **Haigh County Park** with free admissions - further up the canal - makes great day too, with gardens, craft gallery, crazy golf, and miniature railway. **Pier 01942 323666**, **Park 01942 832895**.

Erdig Hall and Gardens - near Wrexham (well signed from the Wrexham by pass) and nearby **Farm World** make a great pair. The Hall is upstairs downstairs preserved, the Farm a working farm with hands on for children. **Hall - 01978 355314 Farm 01978 840697**

Britain's most Spectacular Shopping & Entertainment destination



There's no destination like it anywhere in Britain. The magnificent £600 million Trafford Centre, is one of the most stunning and exciting shopping and leisure centres ever built, with 280 stores, 35 exciting restaurants, cafe bars and fast food outlets, tenpin bowling and 20 screen cinema.

Stores: 280 popular and specialist stores including Debenhams, C&A, Bhs and the only Selfridges outside London.

The Orient: A vast leisure and entertainment dome where dozens of exciting restaurants nestle in streets with New Orleans, New York, Chinese and Italian themes under a vast ceiling of stars. Leisure activities include Britain's first 20 screen megaplex cinema, 18 bowling lanes, virtual reality games centre, bumper car rides and the Rainforest Cafe, where you can eat in the jungle surrounded by live parrots.

Children's Wonder World: A wide range of entertainment for children including The Trafford Centre's own singing bears, supervised creche and 'Kidz Klub', the soft toy play area sponsored by Nestlé.

Location: Situated on the M60 at junctions 9 & 10, just a short drive from the centre of Manchester down the A56, it's easy to find.

Hours: Open 7 days a week.

Shopping: Mon-Fri 10am-9pm,
Sat 9am-7pm, Sun 11.30am-5.30pm.

The Orient: Mon-Fri 10am-midnight,
Sat 9am-midnight,
Sun 11am-midnight.

Shopmobility: Open during shopping hours. Free manual wheelchairs and electric scooters.



The Trafford Centre


Contacts: Coach Enquiries: 0788 7854556 Directions: 0845 60 40 608 Shopmobility: 0161 749 1728 Opening Hours: 0845 60 20 314
Customer Services: 0161 749 1717 Web site: <http://www.traffordcentre.co.uk>

IN OUR HUMBLE OPINION - A ZOO VIEW

Thanks a million!



No one took the challenge we set you a year ago! (That is when the Editor bet the world that we'd pass the million paying visitors by 2005!). We in fact achieved the millennium figure in late November 2000 - meaning that 2000 will be the best attendance year since 1972. A million visitors is nice, but it is not that important. What is vital though is that more and more people are seeing the relevance of the Zoo and its operations. Its product and achievements have improved beyond measure - and we are achieving a new relevance, inside the Zoo and outside. That is the substance of our achievement - thanks to your support!

 This is the logo of the World Association of Zoos and Aquariums, the new name for what was previously the World Zoo Organisation. The Zoo director, Professor Gordon McGregor Reid was one of the team who approved the logo at the Autumn 2000 meeting in the USA

Outreach

China, Costa Rica, India, Africa and the Philippines - just some of the major areas where funds that you have helped us generate have been invested in wildlife conservation projects of real relevance. The battle for conservational breeding can be won here at the Zoo - but it can also be very easily lost in the countries of origin. Combine a home based Noah's Ark for breeding and education, with a well-directed, country-of-origin based effort to save and protect, and our chances of saving the world wildlife is vastly improved. These initiatives are not confined to Animal Division either - one of the most important visits in 2000 was Head of Education, Stephen McKeown going to Zambia to help with Education projects - alongside Alan Woodward from Animal Division. Chester is taking those vital steps now - and is on the threshold of being a world player. Are you coming aboard?



Vets to the Rescue

To newcomers Stephanie Sanderson - Veterinary Resident, and her 'right hand' Veterinary Nurse Jayne McDonald, a very good first year. On site - on call and on time, they provide that extra expertise that augments good keeping in improving animal health and welfare. We trust that they will soon have their purpose built and designed veterinary care centre.



The Plassey Touring Caravan Park & Craft Centre



Award winning Park with many amenities including indoor swimming pool, 9 hole golf course, unique restaurant, coffee shop, 16 craft workshops and boutiques, real-ale brewery, hair and beauty studio and garden centre.

Half hour drive from Chester. Craft centre open all year - Free admission, free parking

01978 780277

The Plassey, Eyton, Wrexham LL13 0SP
email: jbrookshaw@aol.com
www.theplassey.co.uk
Fax: 01978 780019



DEWA ROMAN EXPERIENCE

STEP ABOARD a Roman Galley and stroll through the reconstructed streets of Roman Chester
DISCOVER the Roman, Saxon and Medieval remains buried beneath Chester in on-site excavations
EXPLORE the local and national 'Finds' in the museum area
HANDLE 'Finds' yourself in the 'hands-on' room where you can try on an authentic replica of legionary's armour
BROWSE around the Gift Shop selling a selection of authentic antiquities and historically related souvenirs



AN 'EXPERIENCE' NOT TO BE MISSED

OPENING TIMES

9.00am to 5.00pm (last admission)

7 days a week
Closed Christmas Day & Boxing Day

For more information contact:
DEWA ROMAN EXPERIENCE
Pierpoint Lane, Chester CH1 1NL
Tel: 01244 343407 Ans/Fax: 01244 347737
or the Chester Tourist Information Offices

Double Joy

Assam and Po Chin, our baby Asiatic elephant bulls have a lot of growing to do but will have the great joy of doing it together - with a big sister close at hand.

Consider that we have four zoo bred babies and that now half our herd of ten is zoo bred. To Chang - a great job well done, and whilst we can be wholly confident that there won't be more babies born in the zoo in 2001, for the future - who knows! Add the babies to the great new enclosure and the National Elephant Centre proposition is a very powerful one. To all our supporters - from the President to those to support Council member Dave Wall and Debbie his wife in fundraising - keep it up. We need the funding for the next phase! And let no one forget Mick Jones and his team - what a great job they have done.



Some Spirit

Spirit of the Jaguar - thanks to Jaguar Cars, now of Halewood as well as Coventry who have given us the biggest single opportunity in our time to improve the work of the Zoo. Notwithstanding the wettest November ever - main contractors Reads, and the host of specialist contractors and sub contractors have made it happen - with Architects, McCormicks of Chester and the Zoo's team providing the vital enthusiasm and push. If you want to see their work - go over to East Zoo to view our newest exhibit - almost ready as we go to press. The new car - we are assured is going to be equally successful - see page 15 for a sneak preview!

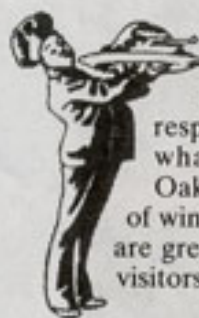


Where there's a will...



Legacies are a wonderful way to help the Zoo - and we still benefit today from the monies left to the Zoo in the days of our founder - George Mottershead, which cleared debts and allowing land to be bought. Hazel Russell, Assistant Development Manager can explain how simply it can be arranged, in a tax effective way to provide a lasting memory. Membership of our Legacy Pledge Club links those who have agreed to help the zoo in their wills. Details from Hazel Russell on 01244 650229.

At your service!



Our Visitor Services Team is now a year old, with Liz Child, the Divisional Head, and her managers Alan Jones, Sue Clews, Jane Lawson and Chris Williams. By putting all aspects of giving the visitors a great day into one team responsibility, we are in line with modern trends. And to show what they can now do - a civil marriage is possible (in the Oakfield) and the Zoo now has a full drinks license, so that a glass of wine with the elephants is quite in order. Be sure that whilst there are great plans for future animals developments, Liz will see that the visitors get their fair share (and maybe more!).

Gold and Silver

Southport Flower Show and the Royal Horticultural Society Show at Tatton showed just what our horticulturalists and botanists can do - especially with a spade. To Mark Sparrow, Mark Hargreaves, Sarah Bird, Chris Williams and all their staff, a well deserved thank you!



Hands On



Primates Team Leader Andrew Lenihan's Keeper for the Day scheme has been huge success - a good idea, plenty of enthusiasm and a team of keepers who have made every day a memorable one. Who will be surprised to see other leading zoos taking a leaf from our book? See page 45, but note that because of the number of bookings received in 2000, we may not be able to take further firm bookings until the second half of 2001.

Standing together

One of the smaller achievements of the year was our initiative to get reciprocal membership visiting rights at leading zoos in the UK and Eire. Zoo Members can now visit London, Whipsnade, Marwell, Bristol, Edinburgh and Belfast Zoos, and Dublin Zoo and Fota Wildlife Park in Ireland just by showing their cards - and we welcome their members too. This is a scheme that will certainly grow!



AIR MILES POINTS CAN NOW BE USED AT THE ZOO

CIVIL WEDDING CEREMONIES AT CHESTER ZOO

Abounding with charm, our elegant mahogany panelled Boardroom is the perfect setting for a civil wedding ceremony with a maximum of 45 guests. Within the Oakfield House and set amidst the Zoo grounds, the Boardroom has views over the lawns, cedar tree, red-crowned cranes and otters!

After the ceremony, photographs can be taken within a number of locations throughout the Zoo. With a backdrop of award winning gardens and, of course our animals, your wedding photographs will not only be special but certainly unique.

Enjoy a drinks reception on the terrace or even in the Roman Garden - complete with statues and fountains. This can be followed by your wedding breakfast in the Oakfield Restaurant with seating for up to 60 guests. For the larger wedding reception a marquee can be erected on the Oakfield lawn accommodating up to 120 guests.

For further information, or to view our facilities, please do not hesitate to contact our Events Office on 01244 650209.



Zoo Honours 2000

Zoo of the Year
Holiday Which? Awards
Merseyside Business of the Year
 Runner Up, Daily Post Awards
Merseyside Tourism Awards
 Runner Up, Tourism and the Environment
Merseyside Tourism Awards
 Runner Up Best Marketing Strategy
Merseyside Tourism Awards
 Runner Up, Visitor Attraction of the Year
North West in Bloom
 Category Winner
Chester in Bloom
 Commendation
Silver Award
 RHS Tatton
Gold Medal
 Southport Flower Show
Silver Trophy for New Entrants
 Southport Flower Show
The National Charity Awards
 Shortlisted
Three Federation Commendations
 for Conservation, Education and Marketing
National Marketing Week Awards
 Shortlisted

You can't feed the animals at the Zoo...



**STAY OVERNIGHT AT
THE TRAVEL INN**
 FREEFONE CENTRAL
 RESERVATIONS 0870 242800

...but you can feed the kids

**at RoadChef Chester
Services just off the M56**

(Junction 14/A5117 Interchange)

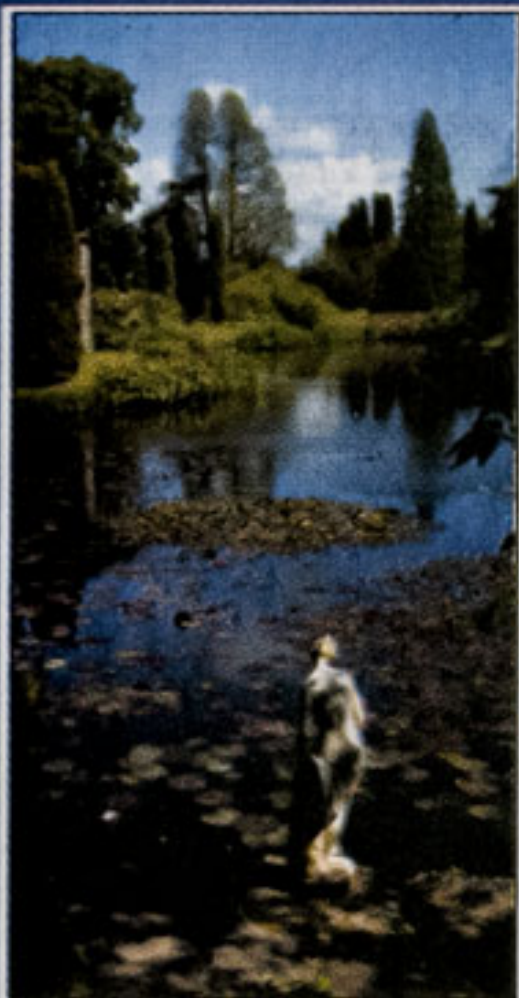
Choose from our superb self-service restaurant, Costa Coffee shop or Wimpy fast food unit. You'll also find a shop, amusements, tourist information, children's play area, baby changing facilities and cashpoints

All leading
Credit & Debit Cards

RoadChef

Relax. It's RoadChef |

GET FACE TO FACE WITH ANIMALS



Extensive ornamental gardens dominated by romantic Gothic Castle, built in 1801 of local sandstone. Beautiful Temple water garden, rose garden and many mixed borders. Lakeside picnic area, children's play area, rare breeds of farm animals, including Llamas. Ancient private chapel in the park. Gift shop and tea room. Plants for sale.

Open: Sunday 1st April until Sunday 30th September 2001 - Wednesday, Thursday, Sunday and Bank Holiday Mondays 11.30 - 5.30pm (last entry 5pm) (Closed Good Friday 13th April)

Admission: Adults £3, Children £1.50

Location: Off A49 Whitchurch/Tarporley Road

Enquiries: The Secretary, Cholmondeley Castle, Malpas, Cheshire SY14 8AH

CHOLMONDELEY CASTLE GARDEN

Malpas, Cheshire SY14 8AH Tel: 01829 720383

(The Marchioness of Cholmondeley)

HANDY WALL'S ICE CREAM GUIDE



It's Hands On in the Wildlife Discovery Centre



Get face to face with the wonderful world of animals in the latest creation from Education Division. Close by the Children's Farm and Fountain Shop is the brand new *Wildlife Discovery Centre* in a neat timber clad building. Peep inside to see some of the friendlier residents - rats, giant hissing cockroaches, snakes, giant snails and wonderful millipedes - as long as your hand. So that we don't tire the animals out, there are limited places on the daily term time sessions for schools - (You must book ahead). From Easter until the autumn at weekends, and during the school holidays - the sessions are available by ticket from the nearby *Wildlife Activity Centre* (by the Overhead Railway Station in Jubilee Square). There are other wonders in store too - and details are posted on the notice board outside the Discovery Centre. Not resident inside, but very much part of the fun are the pair of beautiful Kune Kune pigs, native to New Zealand.

Children's Activity days 2001

These are run by our Education Division, and are open to all Children aged 8 - 11 (that is years 3, 4, 5 and 6 of Primary school on the day of the activity). The day starts at 10 am until 4pm, the cost is £20 per day, and includes a morning drink and snack, but you need to bring a packed lunch.

There is full supervision. Everyone will have something special to take home at the end of the day.

Telephone (01244) 650205 for a booking form

Places are limited and demand is huge!

EASTER EGGSTRAVAGANZA

Thursday 12th April.

All about Eggs! Visit the incubation room during a zoo trip to look at nests and young birds.

BUGS

Tuesday 29th May

Investigate the strange world of mini beasts. Help carry out an invertebrate survey.

Meet some of the 'big bugs' in the education centre



South American Week

Monday - 13th - Friday 18th August

Learn about the Jaguars in their great new home, and the endangered Tamarins of the rain forest. Meet Tapirs, indulge in folk art, get the beat of the Samba and pretend, at least, that our canal is an Amazon tributary. It's an action packed week that you won't forget!

Monkeys, Apes and Man -

Saturday 29th September

The wonderful world of some of our near relatives. Skulls, teeth and bones are worth a closer look!

Dinosaur Experience -

Saturday 8th December

Journey to the Jurassic - check out the fascinations of the biggest creatures ever to roam the Earth. Feel a real dinosaur egg, do a dig, make a plaster cast fossil and meet some living relatives of the dinosaurs themselves.

• MINIATURE RAILWAY • AMUSEMENT PARK

THE WILDEST DAY OUT ON THE PLANET!

Feel the thrill as you drive past the finest herd of African Elephants in Europe, then Lions and Tigers - so close you can see the whites of their eyes! Discover what it's like to rub shoulders with Rhinos, Buffalo, Zebra, Ostrich and many more, all roaming free in 500 acres of rolling countryside. Days out don't get any wilder!

And to make your visit complete, we've introduced some new ideas and attractions.

- A new optional 'vehicle-friendly' route around the lively monkey enclosure!
- Once in, you can tour the park as many times as you like
- Many new animals including Giraffes, Meerkats and Otters
- All this, plus FREE entry to the Sealion and Parrot shows, and the Children's Farm and Reptile House.

Amusement rides priced separately.

AS FEATURED ON
THE MUCH ACCLAIMED
TV SERIES 'SAFARI'

DAYS OUT DON'T GET ANY WILDER!



KNOWSLEY SAFARI PARK

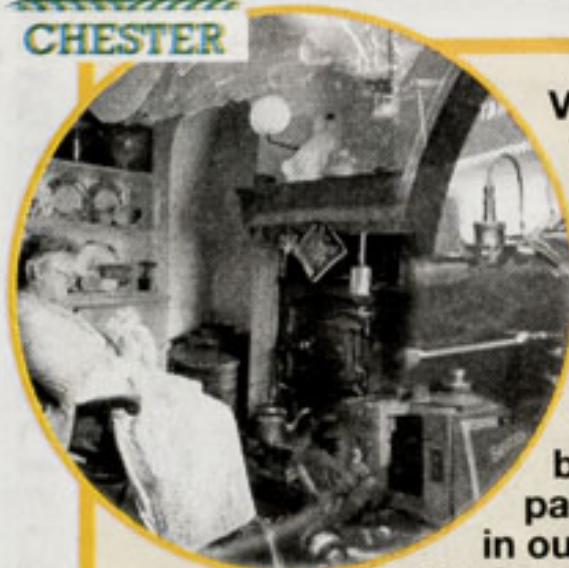
Prescot, Merseyside L34 4AN Tel: 0151 430 9009 Website: www.knowsley.com

From M62 Exit at junction 6 then take M57 exit at junction 2, at the roundabout follow the Safari Park signs

Open daily 10.00am, last entry 4.00pm

SEALION & PARROT SHOWS • CHILDREN'S FARM • SHOP • REPTILE HOUSE

DISABLED FACILITIES • COACH PARK • PICNIC AREA • FAST FOOD RESTAURANT



Visit this unique award winning museum and see the world's largest floating collection of historic inland waterways craft.

Step into traditional boat cabins to compare them to life on land in our period cottages and blacksmith's forge. Take a trip on a narrowboat or visit our bright, friendly café and gift shop.

There's something for all the family at Britain's Premier Canal & National Waterways Museum.

OFFER PAGE 49.

Open Summer: 10 am - 5 pm daily.

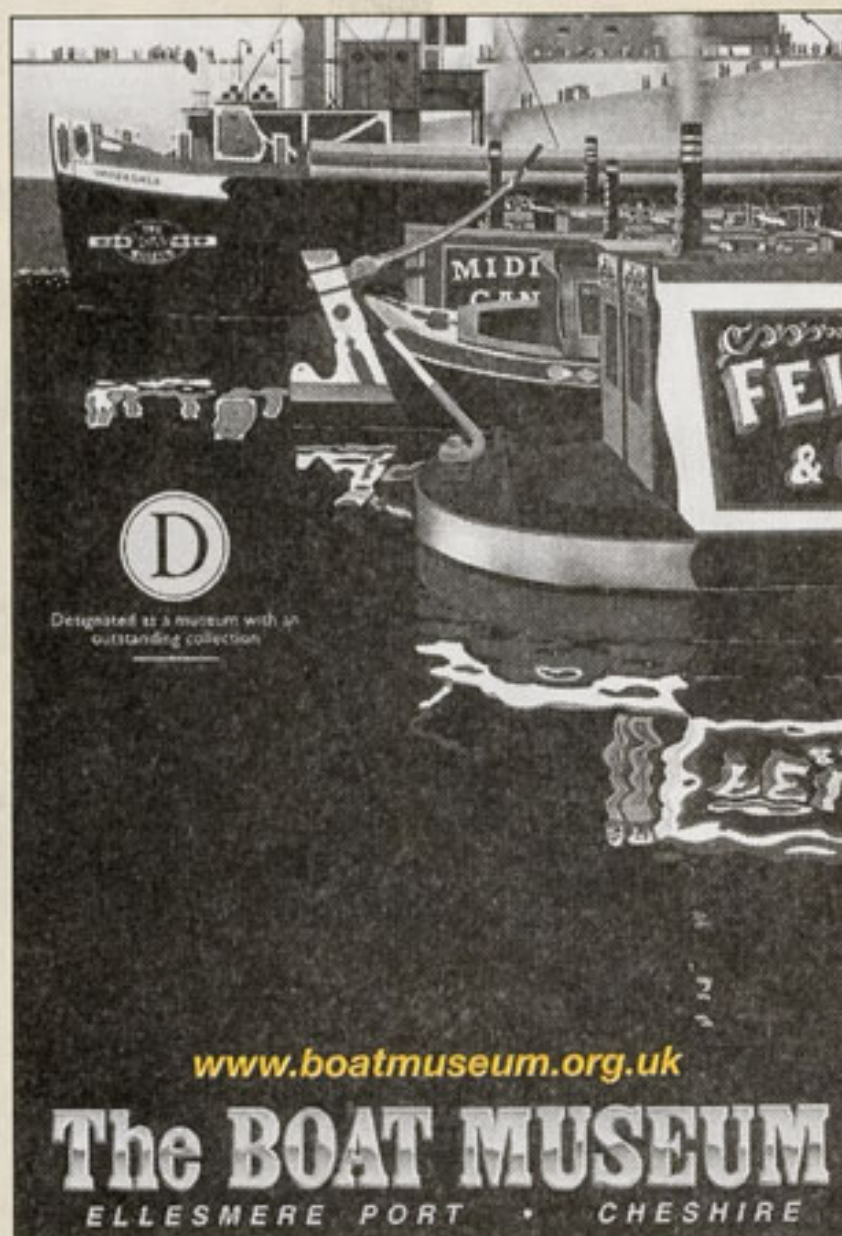
Winter: 11am - 4 pm Saturday to Wednesday.

Disabled / pushchair access.

Junction 9, M53 - two mins. Cheshire Oaks. 15 minutes from Chester.

Tel: 0151 355 5017

e-mail: bookings@boatmuseum.freeserve.co.uk



Blow your mind at
Blue Planet
Britain's biggest &
best aquarium
attraction!

FREE CHILD admission
with a full paying adult
or **10% OFF** all full priced
admission prices with this
voucher

Not valid with any other offer or promotion.
Voucher expires 31/12/01

Next Door to Cheshire Oaks, Junction 10, M53

Call 0906 941 0088*

CODE: 155 / 156



THERE IS SO MUCH TO DO!

Canals to delight the enthusiast and the walker. The Boat Museum at Ellesmere Port is a great start 0151 355 5017 See P12 opposite.



Heaven for those who like the best of dairy products and real ice cream, from the milk of contented cows. Cheshire Farm Ice Cream 01829 770995

Exit 14 for Chester Services on the M 56. Shell Petrol, RoadChef facilities, Travel Inn (01928 726192), a very handy shop and restaurant and a tourist information point with all the leaflets you need. All major credit cards welcome.

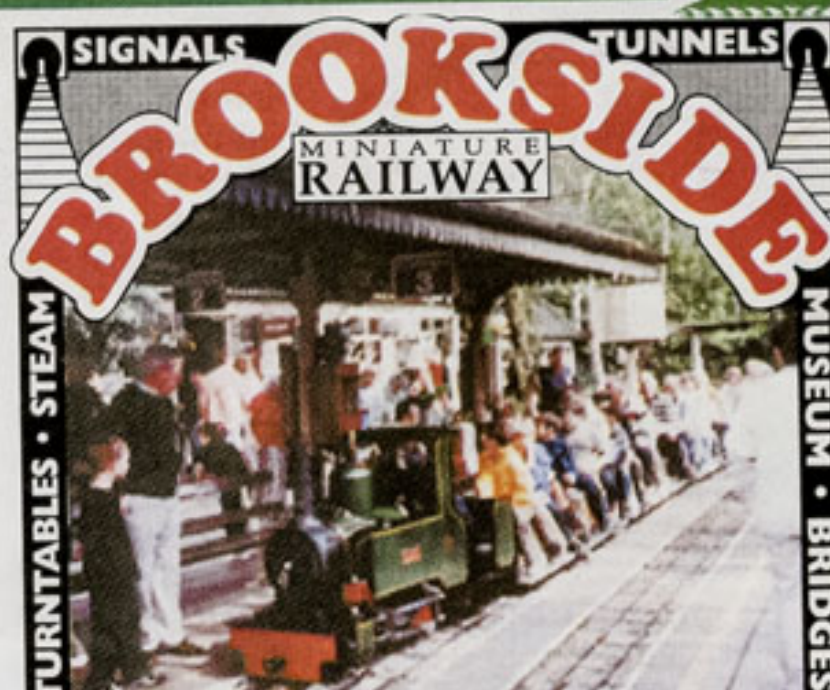
Shopping - Chester itself has the amazing upstairs Rows and Cheshire Oaks is the largest shopping outlet village in the UK, with the Coliseum entertainment complex and the 60 ft screen at Warner Village Cinema - 0151 356 2255 or www.warnervillage.co.uk See page 25.

High above the Cheshire Plain is the Jodrell Bank Radio telescope - *Cheshire Family Attraction of the Year* for 2001. 01477 571339. www.jb.man.ac.uk

Invitation to be a Roman Soldier - and get a Discharge Certificate after your day's loyal service. Town Hall TIC or Chester Visitor Centre in Vicar's Lane - 01244 351609

Rediscover History at two great Chester museums that are only a few yards apart and both refitted thanks to Millennium money! Grosvenor Museum 01244 402008 and Chester Military Museum at the Castle - (open from Easter after its refit) 01244 327617.

Everyone who loves gardens will want to visit our gems - Ness Gardens in the Wirral, Bridgemere Garden World and Stapeley Water Gardens - two of Europe's biggest - and at Brookside at Poynton with its famous miniature railway (right)



**SUPERB 7 1/4" GAUGE RAIL CIRCUIT
TREMENDOUS LITTLE TRAINS
NEAR 1/2 MILE SCENIC RIDE THRO'
PREMIER GARDEN CENTRE
MAIN STATION & HALT**

**OPEN - EVERY WEEKEND THROUGHOUT THE
YEAR plus WEDNESDAYS, APRIL to SEPT
plus ALL DAYS from MID-JULY to END AUGUST
also MOST SCHOOL HOLIDAYS (phone to check)
11.00am - 4.30pm ALL DAYS (weather permitting)
STEAM AT WEEKENDS ONLY • Follow the brown tourist signs**

**BROOKSIDE
GARDEN CENTRE & MINIATURE RAILWAY**
Macclesfield Road (A523), Poynton, Cheshire
Tel: (01625) 872919 Fax: (01625) 859119

Interactive Fun

**Offer see
page 51**

**FREE * Holiday workshops
for children
Telephone for details!**

**Shop, Cafe, Family Fun Trail,
Heritage Trail around
neighbouring Spike Island**

*** Workshops
are free
only as part of
a paid visit**

**Visit our 4 interactive galleries and
ride in our 100ft external glass lift!**

**Panoramic views across Cheshire from
the all glass roof-top observatory**

**See our money saving
voucher in this
publication!**

CATALYST
The Museum of the
Chemical Industry

**Where Science and Technology really come alive
through a host of interactive exhibits**

Mersey Road . Widnes . Cheshire . WA8 0DF Telephone: 0151 420 1121

Getting to the Zoo by bus ... no problem



Frequent Bus Services to Chester Zoo from Chester Bus Exchange, Bache Railway Station & Ellesmere Port

For full details of all services

▣ Chester Bus Station 01244 381515

▣ Ellesmere Port Bus Station 0151 355 1203

First
Crosville

Spirit of the Jaguar



There's never been anything like it at Chester - a fully funded, state of the art project that will bring one of the world's most endangered cat species back to the Zoo after

many years absence. We will have both the spotted and black forms of the Jaguar. We owe so much to the foresight of Jaguar Cars, who wanted an appropriate way to mark their coming to the North West to build their X Series at the Halewood Factory, just on the north bank of the River Mersey.

Scheduled for a late spring opening, our facility will offer savannah and rainforest habitats to two pairs of cats. There will be large indoor viewing areas, and huge outside paddocks, complete with landscaping, waterfalls and appropriate planting. Inside the building will be special information material, devised by Education Division (with some smelly surprises) as well as the poison arrow frogs, butterflies, leafcutter ants and bird eating spiders that complete this South American site.

Just as important as the breeding facilities here at Chester are the visits and shared experiences with conservation teams in South America - and Zoo Director, Professor Gordon McGregor Reid has already been to Costa Rica form links.

The design for the entrance to the building by Artist in Residence, Ann Bridges RCA 01824 703991

Visit Europe's largest attraction of its kind!

Regularly featured on National Television



The Chestnut Centre OTTER, OWL & WILDLIFE PARK

Take the Wildlife Walkabout and experience close encounters with Europe's largest collection of multi-specied Otters and Owls

50 acres

of Historic Parkland in the Peak District National Park, bringing you closer to real nature than ever before!

OPEN EVERY DAY

10.30am-5.30pm

(Weekends only in January) Free Parking

Castleton Road, Chapel-en-le-Frith, High Peak, Derbyshire

Tel: (01298) 814099

www.otterandowls.co.uk

Plus
Tea Room
Wildlife Gift Shop

SEE Them SENSE Them SAVE Them - CONSERVATION IN ACTION!



THE NEW CAR AND THE NEW BUILDING



Above - the skeleton of the roof.

Below - in January Snow.

The most exciting Jaguar Saloon in history

Sunday Times Motoring Correspondent, Andrew Frankel reports

"The all new X type Jaguar...starts life well enough with 2.5 and 4 litre V6 motors, four wheel drive and a brief to be the most exciting Jaguar saloon in history. But this is only the beginning, as the next X-type down the tracks will be a 330bhp, supercharged monster with a brief to slay the (BMW) M 3. Sadly we will have to wait just a little longer, probably until the back end of 2002, before we see it" (Sunday Times 17th Dec 20 00).



Squire Bumpkin's Friendly Farm

Splashing fun on Pendragon's Plunge



King Arthur's spectacular Jousting Tournament



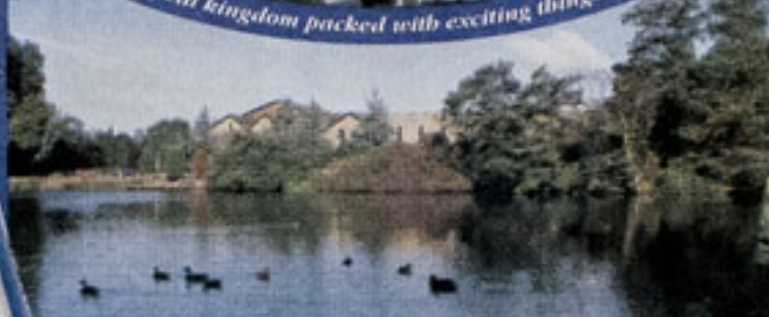
The amazing Towers of Fun



A safe, magical kingdom packed with exciting things to see and do.



Fabulous family rides



Enjoy a magical stay at Camelot's very own hotel and you can enter the Theme Park FREE!

TELEPHONE 01257 452 100 FOR OPENING DATES AND TIMES

Offer page 49

4 NEW ATTRACTIONS FOR 2001

The FAMILY SIZE day out!

PARK OPENS APRIL 7TH

Chorley, Near Preston, Lancashire.
M6 (Junction 27 and 28)
M61 (Junction 8)
www.camelothemepark.co.uk

GLORIOUS GARDENS

Greenhouses open



Fun in the dolphin pool of the Roman Garden

This year has been declared a 'rest year' for outside ventures, meaning that all their talents will be used inside the Zoo to increase the natural habitats of the animals and delight visitors. The Roman Garden by the Oakfield House will have its first full season, and Glorious Grasses its second full year. With ventures like these, the plantings around the elephant paddock - and the greenhouse by the Ark Restaurant open to visitors for the first time, there is a lot happening this year. You can also be sure that they will have some very special plans for 2002!



Roman garden statues.

Gardens to Delight

The talented horticultural and botanical team led by General Curator, Mark Sparrow brought great honour to the Zoo in 2000, with three major awards - a Silver Medal for their *Islands in Danger* garden at the Royal Horticultural Society Show at Tatton Park - an award for the first show garden they had created there, and only weeks later, a Gold Medal and a Challenge Trophy for first time success at the prestigious *Southport Flower Show*. With over 80,000 visitors at Tatton, and similar numbers at Southport, this means that a huge number saw our exhibits - and benefited from the special tickets that the team under Chris Williams, Sarah Bird and Mark Hargreaves were able to give to admirers!

Paradise Island

Our long standing links with the Indian Ocean island of Mauritius get stronger each year. Air Mauritius and Sun International Hotels generously provided the top prize for the Zoo's Photographic Competition (see page 32 - 33). Bird Keeper Anne Morris spent three months on the island helping with parrot conservation. Keeper James Andrewes is set to lead a special members' expedition to Mauritius and Rodrigues Island for birds and bats next year and Manchester Metropolitan University student, Vicki Powell - one of last year's team of presenters and now a research associate, plans to complete her PhD with a bat flight project involving radio tracking studies! Finally, John Billington CBE, formerly Chief Executive of Billingtons - the Liverpool sugar and spice traders - who have long links with the island - has joined the Fund Raising Advisory Board - and helped to judge the 2000 Photographic Competition. Air Mauritius telephone 0161 498 9909 see page 27.

GORDALE
NURSERY & GARDEN CENTRE

Cheshire's Leading Garden Centre



CHESTER HIGH ROAD (A540), BURTON, S.WIRRAL
TELEPHONE: 0151 336 2116

e-mail: advice@gordale.co.uk internet: www.gordale.co.uk



Drinks Voucher

The drinks are on us...

Present this voucher at the till and you will be given a choice of either a free cup of tea or coffee.





CHESTER ZOO - ALWAYS NEW

BISCUITS * SEASONAL GOODS * MINERAL WATER * JUICE

* MILK * CHEESE * BREAD * CREAM * YOGHURT * COTTAGE CHEESE *

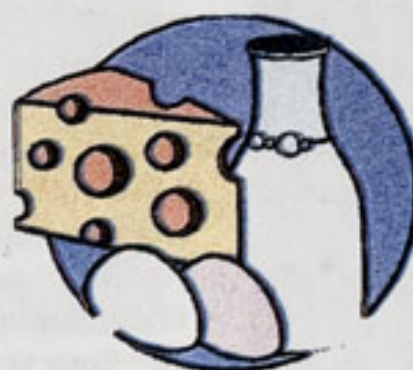
TEA BAGS * COMPOST * PLANTS * CHOCOLATES * POP



Express Dairies Milk
Blacon House Farm
Saughall Road
Blacon
Chester
CH1 4BH

Tel: 01244 373355
Fax: 01244 390553

HOW DO YOU GET YOURS?



TO START A DOORSTEP DELIVERY

CALL FREE ON:

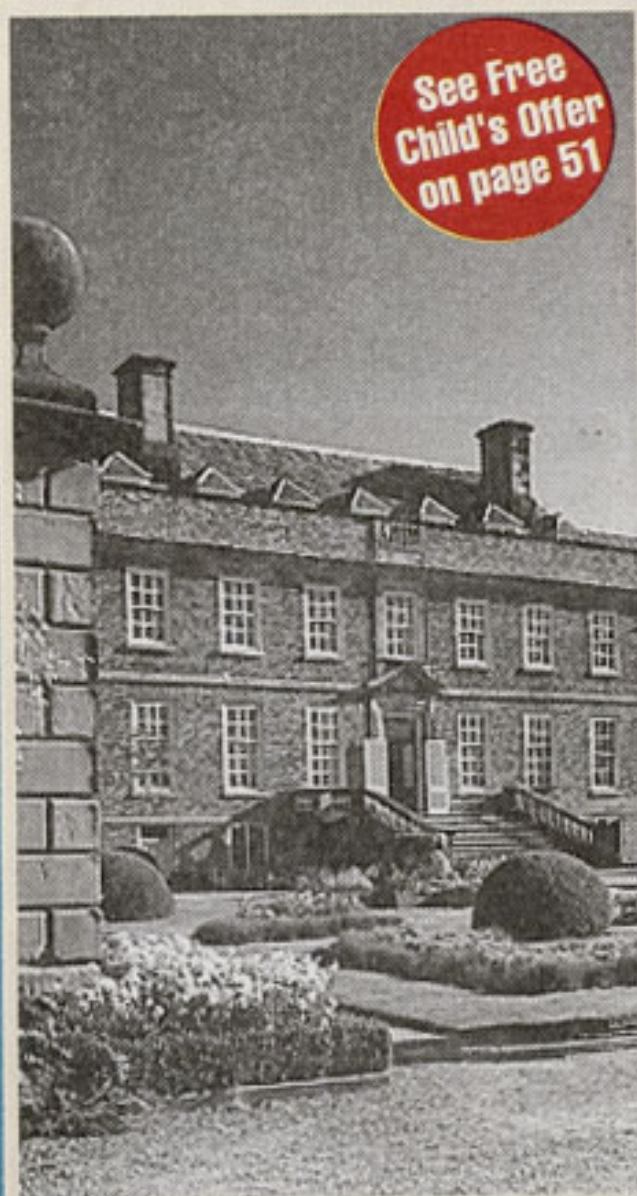
0800 615 715



Express Dairies - Chester
are pleased to adopt the
Penguins at Chester Zoo

* BATCHES * ROLLS * FRESH ORANGE JUICE * POTATOES * REGULAR PROMOTIONS *

See Free
Child's Offer
on page 51



ERDDIG HALL & GARDENS Nr Wrexham

Visit this unique "upstairs downstairs" property including its restored 18th Century walled garden, outbuildings, restaurant and shop. Also Country Park with Cup and Saucer Waterfall
We are open dawn to dusk including woodland walks

2001 OPENING ARRANGEMENTS

31st March to 4th November daily except Thursday and Friday
Garden 11am-6pm House 12-5pm
(July & August - Garden 10am-6pm)
6th Oct - 4th Nov - Garden 11-5pm House 12-4pm
LAST ADMISSION 1 Hour before closing in all cases

OUTDOOR EVENTS

5th & 12th May	"Mud, Mulch & Marigolds - how does your garden grow!"	
	National Trust Outdoor Theatre	11.30am & 2.30pm
13th May	Spring Plant Fair	11-5pm
15th June	Midsummer Night's Dream	7.30pm
4th & 5th August	Victorian Festival Weekend	12-5pm
17th August	Alice in Wonderland	2.30 & 7.30pm
25th Aug - 12th Sept	Welsh Landscape Artists Exhibition	11-5pm
6th & 7th October	12th Annual Apple Festival	11-5pm

Tel: 01978 355314 (Information line: 01978 315151)

Erddig is 2 miles south of Wrexham signposted on the A483 and A525



YR YMDDIRIEDOLAETH GENEDLAETHOL
THE NATIONAL TRUST

AS SEEN ON TV



HACK GREEN SECRET NUCLEAR BUNKER

OFFER SEE PAGE 51



A unique & exciting day out for all the family discovering the underground world of Nuclear Government. If the U.K. had been attacked, the 35,000 sq.ft. bunker would have been a Wartime H.Q. Entering through massive blast-doors, you will be transported into the SECRET world of The Cold War. Descend into the bunker's maze of passages and rooms to see the BBC Studio, Decontamination room, Missile Early Warning System, Communications Centre, Life Support Systems and much more. With many audio- visuals and Soviet Spy Mouse Trail to occupy children, you're sure to enjoy your eye opening trip.

N.A.A.F.I. style Cafeteria. Disabled & Mother & Baby Facilities.

NANTWICH, CHESHIRE

An all weather attraction. Open from 10.30am January to November. (Winter opening varies, November to March.) Ring info line for details.



Bunker Info Line: **01270 629219**
Website:- www.hackgreen.co.uk

ADOPTIONS

4000 of the Best

Of all the groups who support the Zoo and its work, the Adopters deserve our very special thanks. They provide well over half of the money to feed the 6000+ animals of the zoo each year - and when there is a weekday daily grocery bill of over £1,000 - it's great to have someone to share it with! And to make giving even sweeter, new Gift Aid contributes a further 28p in the £ (Feb 2001) if you are a taxpayer and sign the section of the adoption form. We do everything else. Thanks Chancellor!



European Black Vulture

You can adopt any animal species in the zoo, for as little as £30 for a full twelve months, and this gives you a single 'adoption share'. You get four issues of the Zoo Life Magazine to keep you up to date on what is happening, a great certificate - ready to frame, a thank you on the animal paddock or enclosure, an invitation to the annual adopter days in the autumn, when keepers spend time with their adopters and update them on what has happened and two complimentary tickets - worth £20! With the single share costing just £30, this really is a great bargain - and a huge help to us. Adopters are welcome at Zoo meetings and talks, and often are the first to take part in our overseas expeditions. Further shares cost £30 each and everything is made clear in the special leaflet - available in the zoo, or by sending an SAE to Adoptions, Chester Zoo, Upton by Chester, Chester CH 2 1 LH.

Maureen Allsopp - Membership and Adoptions Officer, (01244 650203) and her team- Pauline McKee and Sue Watson - will be delighted to help too. (01244 650204)

FOR A DAY OUT YOU WILL REMEMBER ALL YEAR !



WHERE YOU CAN...

Meet New Friends

Test Your Skills

Learn About Country Life

Enjoy the fun of the sheep race and relax in the Hungry Shepherd Tea Room.

Also under cover play area, mini-tractors, pottery, candle-dipping and much more!

www.virtual-shropshire.co.uk/hoofarm

FOLLOW THE BROWN SIGNS FROM JUNCTION 6, M54 A442 AT LEEGOMERY OR A518 AT DONNINGTON



Ring Tailed Lemur



CHESTER ZOO - ALWAYS NEW

HAIGH COUNTRY PARK

A Great Day Out!

So Much To Do! - So Little To Pay!



MINI RAILWAY



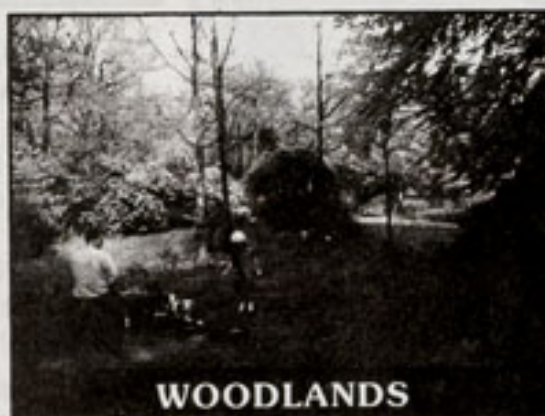
CRAZY RIDES

- ★ 18 HOLE CRAZY GOLF
- ★ CRAFT GALLERY
- ★ CAFETERIA
- ★ GIFT SHOP
- ★ LARGE CAR PARKS

SEE
PAGE 51

- ★ Trampolines
- ★ Play Area
- ★ Craft Fayres
- ★ Web site for info
haighhall.net

Please phone for event details



WOODLANDS



ACTIVITIES

FREE ADMISSION TO THE COUNTRY PARK

Directions: M61 Junction 5/6 and follow the signs for Haigh Hall
Haigh Country Park, Haigh, Wigan. Tel: 01942 832895 a division of Metropolitan Wigan Leisure Services

Experience

an age
when patients were lucky
if they survived the cure.



Ironbridge
VALLEY OF INVENTION

NO OTHER WORLD HERITAGE SITE COMES CLOSE

To find out why Victorians used such bizarre medicinal remedies as creosote for chest infections, seaweed for constipation and gold to improve their general health, take a trip back in time to Ironbridge and experience a most extraordinary day out. Here you'll be able to take in the stimulating sights, smells and sounds of a real-life Victorian town as well as seeing first-hand the revolutionary inventions that changed the course of the world. An unforgettable treat for all the family.

TICKETS

Buy a Passport Ticket and enjoy all 9 superb locations. Prices are £10 Adult and £30 family (2 adults and up to 5 children) and are valid indefinitely until each site has been visited once. Call Freephone 0800 590258 for Tickets and a Free Visitor Guide about Ironbridge & surrounding area.

HOW TO FIND US

Ironbridge is on the River Severn 5 miles South of Telford in Shropshire. Take Junction 4 from the M54, and brown and white signs take you directly to Blists Hill Victorian Town.

FOR MORE INFORMATION CALL

(01952) 432 166/433 522

The Ironbridge Gorge Museums, Ironbridge, Telford, Shropshire TF8 7AW
Museums open daily at 10am. www.ironbridge.org.uk

SPECIAL OFFER PAGE 49



CHESTER

Now with even more members, this enterprising group of attractions offers something special for every family. Try this amazing variety of days out in and around the county of Cheshire.

The **Boat Museum at Ellesmere Port** has the world's largest collection of traditional canal boats. See what it was like when the whole family lived aboard the horse drawn narrow boats. Take a cruise, enjoy the craft workshops, shop and restaurant and see the craftsman skills of the 19th century. Free parking, Junction 9 of the M53. Open 10 - 5pm daily, April to October and 10 am - 4pm, Saturday - Wednesday in the winter. 0151 355 5017. Offer P49.

Blue Planet Aquarium at Ellesmere Port - alongside Cheshire Oaks. Its *aquamazing* show has the world's longest moving walkway in the under water tunnel with huge Sand Tiger Sharks cruising above you. Skilled divers hand feed them through the day. Stroke a fish in the special rock pools! Shaky the shark makes guest appearances. Free face painting and behind the scenes tours. Restaurant and shop. Junction 10, M53. 10 am - 6pm April - October and weekends, 11am - 5pm, November - March. 0906 941 0088.

www.blueplanetaquarium.com Offer P 12 and 50.

Bridgemere Garden World near Nantwich has the largest selection of garden plants in Europe, housing twenty exhibition gardens. The selection of gifts will amaze you - from plants right through to hobbies, taking in books, furniture, houseplants and everything that you can think of for the garden itself. Free Car Park, free admission, restaurant and excellent wheelchair access. Open 9am - 8 pm daily in the summer, 9 am - 4pm in the winter. A 51, South of Nantwich. J15/16 on the M6. 01270 521100. Offer P 49.

Catalyst at Widnes is the hands-on museum of the chemical industry where science and technology come to life. Games, puzzles, molecule splitting - all there to amaze you. Top your visit with the 100 foot glass lift to the roof! Shop, restaurant, wheelchair access, free car park - picnics nearby on Spike Island. Open 10 am - 5pm, Tuesday - Friday and Bank Holiday Mondays, and 11 - 5pm at weekends, J 7 of the M 62/J 12 of M 56. Offer P51.

EAST LANCASHIRE RAILWAY

BOLTON STREET STATION, BOLTON STREET, BURY, LANCS
TEL 0161 764 7790

BURY-RAMSBOTTOM-RAWTENSTALL THE FAMILY DAY OUT



Trains run every weekend throughout the year
Refreshments on most trains and at Bury Station
Break your journey at any station to visit shops or picnic areas

DAY OUT WITH THOMAS

SAT, SUN, MON MAY 5th, 6th & 7th
FRI, SAT, SUN AUGUST 10th, 11th & 12th
SAT & SUN OCTOBER 6th & 7th

1960s WEEKEND

SAT, SUN APRIL 6th & 7th

1940s RAILWAY AT WAR WEEKEND

SAT, SUN, MON MAY 26th, 27th & 28th

TEDDY BEARS' PICNIC

BANK HOLIDAY MON AUGUST 27th

SANTA SPECIAL

WEEKENDS IN DECEMBER

DRIVE A MAIN LINE STEAM ENGINE

EXPERIENCE THE THRILL OF DRIVING THROUGH TUNNELS, AND
ACROSS BRIDGES AND VIADUCTS

Gift Vouchers available
RING LOIS ON 01772 685984

FAVOURITE DAYS OUT IN AND



Blue Planet Aquarium

Cheshire Oaks is Europe's largest Designer Outlet, with top manufacturers selling at up to 50% off standard prices - and sometimes even more. Marks & Spencer and 140+ stores sell clothing, fashion accessories and household goods. Sainsbury's supermarket and fuel at entrance. Free admission, themed food court, free parking - excellent wheelchair access - Coliseum and Blue Planet close by. See page 35 for money saving voucher book offer. 10 am - 6pm, M, T, W, F and Sat. 10 am - 8 pm Thur. 11 - 5pm, Sun. 0151 348 5600

Chester Zoo - UK's No. 1 wildlife attraction. It takes at least five hours - open year round - *New Spirit of the Jaguar* (from Easter), two baby elephants, huge new elephant paddock with walk through waterfall and swimming pool. Open 10 am daily - J10, M53; J12, M56. 01244 380280. www.chesterzoo.org Offer p 53.

Farm World - Wrexham. Explore a working 300 acre dairy farm - feed the lambs, meet the animal characters, take a pony ride, try cuddle corner, watch the milking or try a tractor tour! Open 10 am - 5pm Mid February - early November - phone for other opening times. Shop, Restaurant, wheelchair access and free parking. Well signed from A 483 south of Wrexham 01978 840697

Hack Green Secret Nuclear Bunker near Nantwich. Had there been World War III, this bunker could have controlled much of the country. BBC underground studio, life support, communications, Audio Visuals, Soviet spy mouse trail, authentic NAAFI tea and disabled facilities. 01270 629219. www.hackgreen.co.uk See offer on page 51.

Jodrell Bank Science Centre, Planetarium and Arboretum - Lower Withington - near Macclesfield. The mighty Lovell Radio telescope unravels the mysteries of space. Stunning Planetarium, amazing exhibitions - share the secrets of Newton and Einstein. 35 acre Arboretum, Environmental Discovery Centre. Shop, Restaurant, free parking, disabled access. March - October, 10.30 - 5.30 daily. Other times, 11.00 - 4.30 Tuesday - Sunday, 01477 5671339. M6, J18.

ARLEY HALL & GARDENS

Gt Budworth, Northwich, Cheshire

Enjoy a peaceful afternoon in one of the finest gardens in England.

Special events including

ARLEY GARDEN FESTIVAL 23-24 JUNE

Open 13 April - 30 September and weekends in October, 11.00-5.00pm, closed Mondays.

Hall times vary (please ring). Restaurant, gift shop, plant nursery.

Disabled facilities. Group discounts/tours.

**For information: 01565 777353 J.19/20 M6. J.10/M56
CALENDAR OF EVENTS AVAILABLE**



AROUND CHESHIRE AND CHESTER

Ness Botanic Gardens, Neston, South Wirral. Loveliest of the learning gardens – the University of Liverpool's own botanic garden, overlooking the Dee Estuary, with magnificent rhododendrons, herbaceous borders and well marked trails. A gardener's delight. Free car park, shop, conservatory restaurant. 9.30 – dusk – October, 9.30 – 4pm, Nov – February. M53, J4 to A540. 0151 353 0123 www.merseyworld.com/nessgardens



Port Sunlight Village – 19th Century model village laid out for Lever Soap factory workers – Outstanding Conservation area, with its history at the Heritage Centre close to the modern factory entrance. Centrepiece of the village is the Lady Lever Art Gallery – an amazing example of Edwardian philanthropy. Children and 60+ free. Heritage Centre 0151 644 6466. Gallery 0151 478 4136. M53 J4.

Quarry Bank Mill Georgian Cotton Mill restored to life, when cotton was king and Manchester *Cottonopolis*. 1840 working beam engine, world's largest working water wheel – all set in 300 acres of lovely country park. Apprentice House, Home cooked meals, souvenir shop, 11– 6 pm Summer, 11 – 5 pm winter, Closed Mondays in quiet season 01625 527468, M56, J5.

Stapeley Water Gardens – London Road, Nantwich. Largest water garden centre in the world. National collection of water lilies. Exotic plants and wildlife in *The Palms Tropical Oasis*. Garden centre packed with ideas – angling superstore has everything for the angler. Free car park, free admission (other than to *The Palms*) Wheelchair access. Restaurant. Open 9 am daily, 10 am weekends and bank holidays. 01270 623868. M6 J16. Offer page 53.

THE BEST WAY TO SEE CHESTER

On a Guide Friday Open Top Bus

- Frequent departures
- Complete tour 1 hour
- Trained guides
- Get on and off as many times as you wish



SAVE MONEY!

COMPLETE YOUR VISIT TO CHESTER ... COMBINE THE CHESTER TOUR WITH A CRUISE ON THE RIVER DEE!



- A combined Chester Tour and River Cruise ticket saves up to £2
- Includes 1/2 hour River Cruise on a Bithells Boat

£1.50/£2.00 SAVINGS

Please see coupon page 51

GUIDE FRIDAY

For further information contact Guide Friday on 01244 347457

www.hoponhopoff.com

Buy your tickets on the bus, from Town Hall Tourist Information Centre or from the Chester Visitor Centre

Quarry Bank Mill

The full on, fun filled, family day out.

One of the world's largest historic working cotton mills, Huge water wheel and 1830's working beam engine, Apprentice House Restaurant and Mill Shop.



M56 - Junction 5

Telephone: 01625 527468

Ness Gardens

University of Liverpool Botanic Gardens

Ness, Neston, South Wirral L64 4AY (10 miles NW of Chester, off A540)

Loveliest of learning gardens, with beauty and interest all year round. Visit our Coffee Shops which provide home-made cakes and light meals. Gift Shop, Plant Sales Area, Visitor Centre and Picnic Area.

A LOVELY DAY OUT

Admission Charge

Telephone 0151-353 0123



Chester Grosvenor Museum

THE MUSEUM to visit for the 21st Century family:

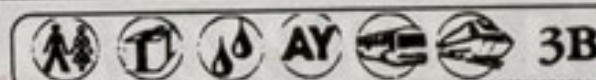
- Chester Timeline gallery tells the fascinating story of Chester from pre-history to modern day
- The best introduction to life in the Roman fortress of Deva
- Explore the natural history of Cheshire from fossils to endangered species
- See the City through the eyes of artists and admire the Chester-made silver
- View the Museum's collections on the Cataline computer system
- Discover the tale of a Town House in Number 20, Castle Street
- Special gifts for all ages in the bright Conservatory Shop
- Lively temporary exhibitions, quizzes and interactives for everyone

• Step-free access to the ground floor and guided video tours with the Keepers

Admission Free.

Open:
Mon-Sat 10.30-5.00pm
Sunday 2.00-5.00pm

**27 Grosvenor St,
Chester CH1 2DD
Tel: 01244 402008**





MEMBERS HELP THE WORK OF CHESTER ZOO

MORE STARS THAN HOLLYWOOD

MORE SPACE THAN YOU COULD IMAGINE

- ★ Get physical with our hands-on science exhibits
- ★ Get close to the gigantic Lovell radio telescope
- ★ Experience fascinating exhibitions on space, astronomy, satellites and energy
- ★ Explore the Universe through our exciting Planetarium show
- ★ Discover the trees and wildlife of our stunning Arboretum
- ★ Cafe. Large car park. Shop

OPENING TIMES

Summer: 3rd weekend in March to 1st weekend in November. Every day 10.30 - 5.30pm

Winter: Tuesdays to Sundays (inclusive) 11 - 4.30pm

[closed 22nd - 26th December inclusive]



Jodrell Bank

SCIENCE CENTRE & ARBORETUM
MACCLESFIELD, CHESHIRE
TEL: 01477 571339

As a charitable trust, control of the zoo in the last resort is in the hands of the members - who elect the trustees or as we call them, the Zoo Council. Anyone who is over 18 can apply for membership (Zoo staff can do this too - but may not vote at General Meetings), and if accepted by the Council, have full voting rights after 28 days. The privileges of membership include unlimited admission to the Zoo during normal opening hours, a useful 10% discount in the retail shops, an allocation of half price tickets for use of family, the wonderful *Zoo Life Magazine* in full colour four times a year. There are members' meetings in the autumn, winter and spring in the lecture hall and other events through the year.

A very special privilege that has been negotiated in 2000 is reciprocal admission to other leading zoos in this country and in Ireland. A Chester member (or Junior member), by showing the membership card is admitted free to London Zoo, Whipsnade Wild Animal Park, Bristol Zoo, Marwell Zoo, Edinburgh Zoo, Dublin Zoo, Fota Wild Animal Park - near Cork and Belfast Zoo. These reciprocal rights are for admission only, and those who are not members pay the normal prices of course.

Membership runs for a whole year. Prices will be reviewed at the Annual General Meeting in May, but until then the prices are £40 for one adult, £66 for two adults at the same address and £13.50 for Juniors (3 - 17). There are special concessions for pensioners too. Send an SAE for an application form to Membership, Chester Zoo, Upton by Chester, Chester CH 2 1 LH - or join when you are next at the Zoo. We will deduct the admission you have paid against membership if you join on the same day and show your admission receipt. Maureen Allsopp - 01244 650203 - has all the answers!



Blakemere Craft Centre

SEE OFFER PAGE 49



- 25 Different Craft Shops
- Indoor Craft Fairs (FREE admission)
- Large Garden Nursery
- Aquatic & Falconry Centre (Falconry displays)
- Indoor Children's Playbarn
- Regular Entertainment
- Restaurant & Coffee Shop



FREE admission & parking

Visit BLAKEMERE for a unique shopping experience & a great day out for all the family! Purchase unusual items for yourself, home and garden or hunt down a gift for that 'hard to buy for' person.



Our regular entertainment programme means that every visit is different!

CRAFT FAIRS
EVERY WEEKEND &
LAST WED OF MONTH
FREE admission

OPENING TIMES

Tues - Fri 10am - 5pm
Sat & Sun 10am - 5.30pm
Mondays closed
Bank Hols: 10am - 5.30pm



Children can have stacks of fun in our children's playbarn, visit the Bird of Prey Aviaries & watch the flying displays, or have a go at making crafts in our workshops.

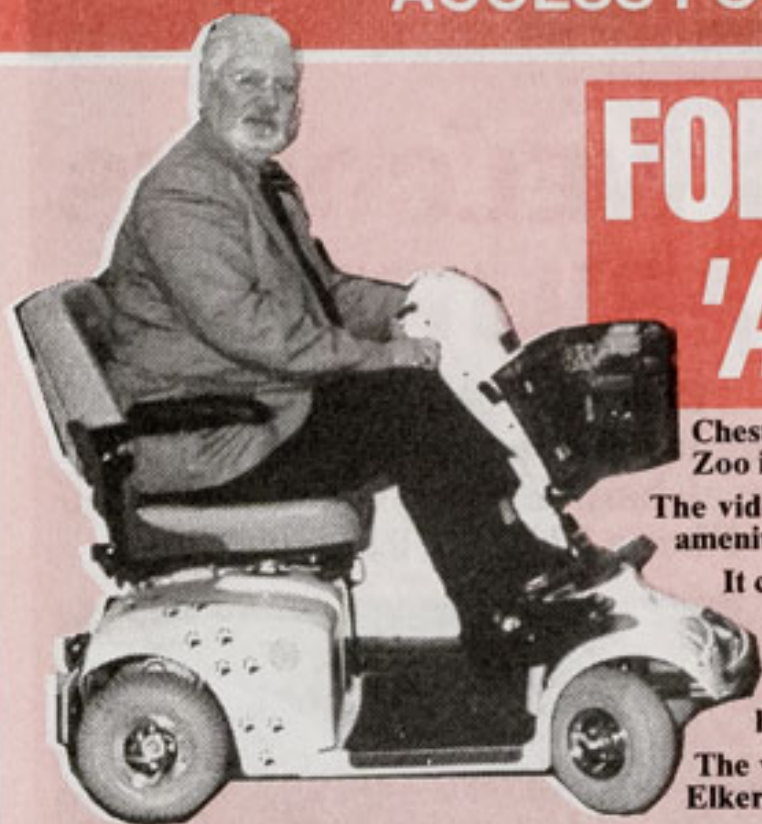


Chester Rd, Sandiway, Northwich CW8 2EB Tel: 01606 883261

A FUN PACKED DAY OUT FOR ALL THE FAMILY!



ACCESS FOR ALL AT THE ZOO



**FOR LOAN
'ACCESS TO ALL' VIDEO**

Chester Zoo now has its own disability video. This may be borrowed and shows why Chester Zoo is the most advanced disability-aware zoo in the country.

The video, produced last year by Hollywood TV, shows many aspects of disability, and the amenities that are available.

It covers items for the hearing and visually impaired, people who have walking difficulties, and the best way of getting around the Zoo with ease. It even has a section on scooter training at Chester Zoo run in conjunction with the Police.

The video is ideal for people with disabilities, plus organisations for people who want to have a stress free visit to the Zoo.

The video can be loaned free of charge by contacting Chester Zoo's disability advisor Mike Elkerton on 01244 380280-9 Ext: 318.

**ZOO SPONSORS
CITY SCOOTERS**

Chester Zoo is to sponsor two electric scooters that belong to Chester City *Shopmobility*. Both scooters will advertise the fleet and amenities for disabled visitors at Chester Zoo.

**Extending the
'Loop'**

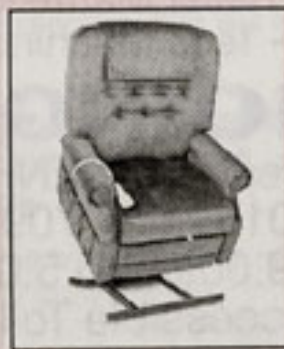


Chester Zoo is very much aware of the needs for the hearing impaired visitor. So it has extended its loop hearing system to cover several other areas. The Education Division, *The Wildlife Discovery Centre*, *The Lecture Theatre*, *The Ark & Oasis Restaurants* plus a Kiosk at the main entrance. It is hoped to expand even further in due course, look out for the blue and white signs.



**MOBILITY SHOP
(North West)**

Specialists in New and Reconditioned Equipment
We offer no-obligation home visits
to discuss your needs and offer appropriate advice



143 Thomas Lane
Broadgreen
Liverpool, L14 5NT
(Opposite Broadgreen Hospital)

Telephone:
0151 220 7080



CHESTER ZOO ALWAYS WELCOMES VISITORS WITH DISABILITIES

The UK's largest zoo is always delighted to welcome visitors with disabilities and offers the following services.

1. There are 35 designated parking spaces available.
2. The zoo is virtually on one level with ramps provided.
3. The zoo gives special rates for registered disabled and their carers.
4. The Zoofari Railway and indoor areas are wheelchair accessible.
5. Four suites of disabled accessible toilets. (Foam changing mats are available if required).
6. Electric Scooters. A fleet of self-drive scooters are available for hire at a small charge. (*Hire subject to Shopmobility driving standard*).
7. Electric Wheelchairs - two electric wheelchairs with self drive hand controls for hire at a small charge. (*Hire subject to Shopmobility driving standard*) *Both Electric Scooters and Electric Wheelchairs when booked can be collected at the pedestrian entrance.*
8. Manual Wheelchairs - the zoo now has a fleet of 23 wheelchairs for hire at a small charge.
9. Tactile maps, large print zoo guides/menus, plus information and taped tour guides for the visually impaired.
10. The First Aid Centre (next to 'Ark' shop) has full access for wheelchair users.
11. 'Access for All' video for loan - please contact Mike Elkerton 01244 380280-9 - 318

PLEASE NOTE:

The booking of Electric Scooters and Manual Wheelchairs is always recommended
Phone 01244 650225



Tactile Animal information

**DIFFICULTY GETTING ABOUT!
LET**

EASI-WAY

MAKE LIFE EASIER

**VISIT OUR HIGH STREET SHOWROOM
WE ARE STOCKISTS OF ALL MOBILITY PRODUCTS
TRY BEFORE YOU BUY**

Powered & Manual Wheelchairs - Electric Profile & Nursing Beds
3 & 4 Wheeled Electric Scooters - Powered Recline/Liftout Chairs
Wheeled Walking Frames - Toilet Frames & Raised Seats
Manual & Powered Bathlifters - Bath Seats & Boards
Walking Sticks - Drinking Mugs - Cutlery
Bed Protection - Pressure Relief Mattresses & Cushions
Nebuliser Sales & Service - Tens Machine & Accessories

SALES - SERVICING - REPAIRS

33-39, Grange Road West, BIRKENHEAD, Wirral.
Telephone 0151 647 7099

Open Monday to Friday 9.00am to 5.00pm - Parking
Wheelchair Accessible Toilets

**YOU
CAN'T
MISS
THIS!**



For a **truly unforgettable** cinema experience visit the iWERKS® Extreme™ Screen at Warner Village Cinemas, Cheshire Oaks.

There is **nothing in the world** quite like it. Combining a **massive** Extreme™ Screen with 3D technology that will take you into **another dimension**.

Whether you are taken to the top of the world's **highest** peaks, to the bottom of the **deepest** ocean or into the **furthest** reaches of outer space, you feel you're really there.

Don't miss the opportunity to visit this **extraordinary** attraction.

Book tickets on **0151 356 2261**.



at



**WARNER
VILLAGE
CINEMAS**



www.warnervillage.co.uk

CHESTER ZOO ACCESS FOR ALL

a whole world of possibilities for wheelchair users



The car gives us all freedom. The power to go where we choose, when we choose. It gives us independence and of course it gives us mobility.

Gowrings Mobility has been building high quality Chairman car conversions for over 30 years, so we understand the value of mobility. But don't just take our word for it, you can see what Mr T C Reason of West Glamorgan had to say:



"It's given not only me the freedom to go anywhere, but also my whole family benefit. No more lifting me and my wheelchair. It makes life what it should be - hassle free."

MR T. C. REASON, W. GLAM (CHAIRMAN EXPERT)

To find out how you can experience the pleasures of easy motoring call the Freephone number below now for your free full colour Chairman information pack.

gowrings mobility

Call Free 0800 220878

a whole world of possibilities

Gowring's Mobility Ltd. 3 Arnhem Road, Newbury, Berkshire RG14 5RU. Tel: 01635 529500. Fax: 01635 529400. Internet: www.gowringsmobility.co.uk

This summer Introducing **SIGNING SUNDAYS** For the hearing impaired visitor



Chester Zoo's BSL Interpreter Sara de Costabadie

This Summer Chester Zoo is to introduce a new initiative with 'Signing Sundays'. It is hoped to hold this new concept on a regular basis, giving an opportunity for the hearing impaired visitor to come to Chester Zoo and to join in and be able to learn about all of the animals along with other visitors. This will give the hearing impaired visitor a chance to ask questions through a BSL (British Sign Language) interpreter when the presenters are giving their talks about the Lions, Penguins, Sealions and other animals at feeding times. We hope that Sara de Costabadie, a BSL Interpreter and English translator will be joining the presenters at Chester Zoo on these special days. Sara has already been to the Zoo and had a trial with presenters, signing to hearing impaired visitors last summer with positive results. Please look out on the Zoo web site www.chesterzoo.org and in local press for further details about these special days.

NEW COLOURS FOR ZOO SCOOTER FLEET

Chester Zoo's own scooter fleet is to have its own Zoo colours and numbers - the first scooter has already been altered and aptly named - Zoo 1.

PUT QUALITY BACK INTO YOUR LIFE WITH...

WE OFFER A FULL RANGE OF NEW AND USED MOBILITY AND DISABILITY CARE PRODUCTS



- SCOOTERS • WHEELCHAIRS
- STAIR LIFTS
- ELECTRICALLY OPERATED BEDS
- RISE & RECLINER ARMCHAIRS
- WALKING AIDS • BATHROOM, BEDROOM & KITCHEN EQUIPMENT
- ACCESSORIES

PLUS FULL REPAIR SERVICE INCLUDING CONTRACTS (INCLUDING CHESTER ZOO AMONG MANY).



A B & R Disability Services Ltd.,
6-12 VICTORIA ROAD, WIDNES, CHESHIRE WA8 0QY.

TEL/FAX:
0151 423 3737



VISIT OUR NEW SHOWROOM OR VIEW OUR WEBSITE www.abrdisability.co.uk

FINANCE ARRANGED

• DESIGN • MANUFACTURE • MODIFICATION • REFURBISHMENT • SALES
APPROVED FISH INSURANCE & ALEXANDER FORSHAW REPAIRS & AGENT

AB&R DISABILITY SERVICES





CHESTER ZOO FOR EVERYONE



JOINT TRAIN, BUS AND ZOO TICKET with very special prices

Thanks to the initiative of the Zoo with its partners, Merseyrail Electrics, First Crosville and Arriva, you can buy a combined ticket that covers travel on Merseyrail Electrics to Bache station from anywhere on the Merseyrail network, a connecting bus to the zoo and zoo entry. Tickets are available everyday, and all manned Merseyrail stations have information leaflets. First Crosville run the buses on Weekdays and Saturdays, Arriva on Sundays and Bank Holidays. New Season's fares start in May 2001, at £12 for an adult, and £8 for a child or pensioner. For the child or pensioner, this fare means the travel - from anywhere on the Merseyrail network is effectively free, for £8 is the standard zoo admission price!

So - let the bus and train take the strain!

Fancy yourself as the next 'Tiger'?



De Vere Carden Park is one of the country's leading Leisure and Golf resorts. The hotel offers formal and informal dining plus relax in 'The Spa at Carden' a luxurious leisure complex, to make your stay unforgettable. For the golfer, the resort boasts two magnificent golf courses, the Championship Nicklaus and the testing Cheshire course, and is also home to Europe's only Jack Nicklaus Residential Golf School, catering for players of all abilities. For further information and bookings please call the hotel direct.



DE VERE
CARDEN PARK

De Vere Carden Park, Nr. Chester, Cheshire CH3 9DQ.
Tel: 01829 731000 Fax: 01829 731032



AIR MAURITIUS

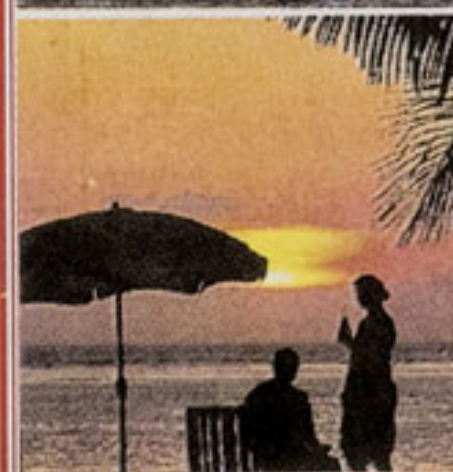


Sponsors of the Zoo Photographic Competition 2000

0161-498-9909

Travel

whilst you
dream



Air Mauritius

Serving the Pearl of the Indian Ocean, this enterprising airline dates back to 1967 - the year before independence. With convenient flights from Manchester, it provides far and away the best route to the island group, some 550 miles east of Madagascar. The islands are home to the unique Rodrigues Fruit Bats, and through the help of Government of the Island we maintain the colony group in the Twilight Zone. Zoo Researcher Vicki Powell is on the island this year as part of the studies on the bats for her doctor's degree at Manchester Metropolitan University. Recently, Anne Morris of our Bird staff has spent over three months on the island, helping with the husbandry of the Echo Parakeet, being bred back from the edge of extinction. In the Zoo, we have the critically endangered Mauritius Kestrels, saved from extinction by aviary breeding led by Jersey Zoo after population fell to a mere six birds!

We plan a Members' Field Expedition to the islands in the late Spring 2002, led by Keeper, James Andrewes, to cover both the wonderful bird life and the bats. Full details on the zoo web site chesterzoo.org or telephone Membership office - 01244 650203

Straw-tailed bird

Appropriately, the airline logo is the straw tailed tropical bird, known as the 'paille en queue'. In both white tailed and red tailed varieties, this is an ocean going bird, that eats squid and flying fish. It has been known to nose dive at people if they wave a white handkerchief at it. Children - on seeing it - traditionally ask for some fish in Creole, 'Pay-an-ké, don moi en ti paké posson'

£1,300 OF PRIZES TO BE WON WITH COCA-COLA IN THIS GREAT COLOURING COMPETITION



The *Three Amigos* (friends) is a favourite nickname for our three young elephants. Big sister, *Sithami*, is the oldest, and was three on 31st December 2000. Her father is *Chang*, and mother *Thi Hi Way*, who came to us from London Zoo on long term breeding loan. *Sithami's* full brother, *Assam*, was born in October 2000, and half brother *Po Chin* in July. His mother was *Jangoli*. *Sithami* already weighs over one tonne, and enjoys the swimming pool, especially with the older male elephant *Upali* who came to us from Zurich Zoo. As we go to press, neither *Po Chin* nor *Assam* have been in the pool, but we expect that they will be in the swim as soon as the weather gets warm again. No other Zoo in the UK has three young elephants - but Twycross has a couple who were conceived here at Chester when their mothers came on a mating visit, and are thus half sisters to our youngsters. This shows that the breeding programme for endangered Asian elephants is really beginning to work, thanks to our wonderful facilities. We hope that during this year, other cow elephants will come to Chester to be mated by *Chang* - but remember, it takes around 23 months before they are born, so please be patient!

Right
4 weeks old *Po Chin* with adoptive Aunt, *Sheba* in August.

Centre
Newly born *Po Chin* finds *Jangoli's* milk hard to reach!

Bottom
Assam, *Sithami* and *Po Chin* - the three Amigos



ENTRY FORM

Name.....
Address.....
Postcode.....
Age (as at 31 Oct 01).....
Please send details of Junior Membership
Animal Adoptions (please tick)

Post to: Elephant Competition Organiser,
Chester Zoo, Upton by Chester CH2 1LH

Rules 1. Enter on this or a copy. 2. One entry per child, who must be under 14 on 31st October 2001. 3. You must give age (as at 31st October) on entry form. 4. Up to five prizes of Zoo Family tickets (worth £36 each) awarded each month from May - October. The competition ends on 31st October 2001. All entries received in each calendar month will be judged together, taking into account age, neatness, and originality. Adult help is allowed, but the work must be that of the child. 5. From all the Family ticket winners, the adoption prizes will be awarded to the best boy and best girl aged under 7, and to the best boy and girl aged 7 - 14. *Coca-Cola* will also give a 'surprise' to these four winners. These will be awarded at the end of the competition. The four Borders Bookshop vouchers will be awarded to the best four school class entries submitted by teachers. The limit classes are Year 1 to Year 8. If winners are already elephant adopters, they may choose another species instead. There are no cash alternatives. 6. Children of Zoo staff may not enter as individuals. Send SAE with your entry if you would like it returned. 8. The Judges' decision is final, and by entering, you agree to these rules.

Children aged up to 14 - Use your skills with colours in our competition. More prizes than ever!

Sponsored by *Coca-Cola* - the Zoo's favourite soft drink
Over £1,300 of prizes to be won-
Four Elephant Adoptions, four Coke 'surprises', four £25 Book Vouchers from *The Borders Bookshop* at Cheshire Oaks and 30 Family Tickets!

Colour the three baby elephants - and the prizes could be yours. Handsome award certificates with up to five family tickets, worth £36 each month from May to October. The adoptions, and Coke 'surprises' will be awarded at the end of October 2001 to the best boy and best girl under 7, and the best boy and girl from 7 - 14! Class entries welcome from Schools. Whilst you colour - get bubbling along with enthusiasm from refreshing Coke! The four Borders Bookshop vouchers will be awarded to the best four school class entries submitted by teachers. Remember - there's always an ice cold Coke and other favourite soft drinks in the vending machines at the Oasis - the nearest café to the elephants!

Final tip - test your paints or felt tips on another part of *Chester Zoo News* to see if they run. Use a photocopy or scan the image if you have a computer and printer.

Nick Thompson drew the picture



**CHESTER
ZOO
OFFER
YOU
10p OFF
A CAN OF**

Coca-Cola

Just present this coupon to any of the catering kiosks at Chester Zoo, any of whom will allow you 10p off your next purchase of a 330ml can of *Coca-Cola*. One coupon only can be accepted per purchase and not against any other product. Photocopies of this coupon will not be accepted.

Promoter:
Chester Zoological Gardens, Upton, Chester CH2 1LH

Valid until 31 December 2001 at Chester Zoo Kiosks only. The redemption value of this coupon is 0.01p. 'Coca-Cola', 'Coke' and the 'Always Coca-Cola' Red Disc Icon are registered trade marks of The Coca-Cola Company



GREAT DAYS OUT FOR ALL

Fun beneath the waves at the award winning **Anglesey Sea Zoo**

- Huge variety of sea creatures, from busy hermit crabs to menacing conger eels.
- Lobster and seahorse nursery.
- Shipwreck, crashing waves and rockpools.
- Crab fishing.
- Shopping, including our famous pearl-fishing.
- Coffee shop featuring delicious cakes and snacks, as well as homemade fudge.
- Britain's only organically-certified seasalt harvested in front of your eyes.
- Only 90 minutes from Chester.
- All under cover.
- Easy to find.
- All you need for a great day out.

SEE OFFER
PAGE 49



Anglesey Sea Zoo
Brynsiencyn, Isle of Anglesey LL61 6TQ
☎ 01248 430411 Fax 01248 430213
www.angleseyseazoo.co.uk



*Get on board the
most famous ferry
in the world*



Mersey Ferries Heritage Cruises

Every cruise is a great adventure for children and adults alike.

There's a full commentary, the chance to stop at Seacombe Aquarium, have your own adventure at Pirate's Paradise, a superb restaurant at Woodside and shops.

You'll never really know Merseyside until you've experienced it from the deck of the famous Mersey ferry. There's no better way to learn the area's fascinating history, see its spectacular sights and discover its unique character.

SPECIAL OFFER
see page 53 for details.

Our unmissable Heritage Cruises leave hourly every day from Pier Head, Seacombe and Woodside.

For further information telephone

0151 330 1444

or visit our web site

www.merseyferries.co.uk

MERSEY FERRIES

Get on board for fun

- RIVER MERSEY, ANGLESEY OR INLAND!

Martin Mere



Encounter rare, exotic ducks, geese, swans & flamingos & feed them by hand.

Experience the childrens'



SEE OFFER PAGE 51

Wetland Adventure

- Special rates for 10 or more
- Guided Tours
- Picnic Area
- Telescope and Binocular Shop
- Pinkfoot Pantry
- Gift Shop • Picture Gallery

... it's wild by nature

To book, telephone: 01704 895181

The Wildfowl & Wetlands Trust
Martin Mere, Burscough, Lancashire L40 0TA.

Located 10 miles from Southport, 6 miles from Ormskirk.
Signposted from M61, M58 & M6, off A59 in Burscough

WINDMILL animal farm

A Great Family Day



A GREAT FAMILY DAY

OPEN Easter - Mid Sept, 10am-5pm Daily,
Oct-Easter, Weekends & School Holidays
Red Cat Lane, Burscough, close to
Martin Mere.

01704 892282



Books, Music & Café

The Coliseum at Cheshire Oaks, Ellesmere Port, Cheshire CH65 9HD

Tel: 0151 356 7716 Open: Mon-Sat 9am-10pm Sun 11am-5pm

www.bordersstores.com

- OVER 130,000 DIFFERENT BOOKS, CDs, VIDEOS & DVDs AND A CAFÉ
- GREAT OFFERS ON OVER 40 BESTSELLERS EVERY MONTH
- FANTASTIC SELECTION OF MAGAZINES AND NEWSPAPERS
- HOUSE ACCOUNTS FOR BUSINESSES AND SCHOOLS
- FREE GIFT WRAPPING OF ANY PURCHASE
- GIFT VOUCHERS IN ANY DENOMINATION
- DELIVERY TO ANY ADDRESS IN THE WORLD

FREE PARKING

REGULAR EVENTS: Live Music ~ Children's Storytime ~ Quiz ~ Games Night



2000 PHOTO WINNERS



AIR MAURITIUS



Ed Makin from Liverpool wins the Title Air Mauritius Photographer of the Year* with this fine Snowy Owl print. This award was for the best overall photograph in the competition. The Best Print prize therefore goes to the next best print entered, as our rules allow only one major prize per entrant.



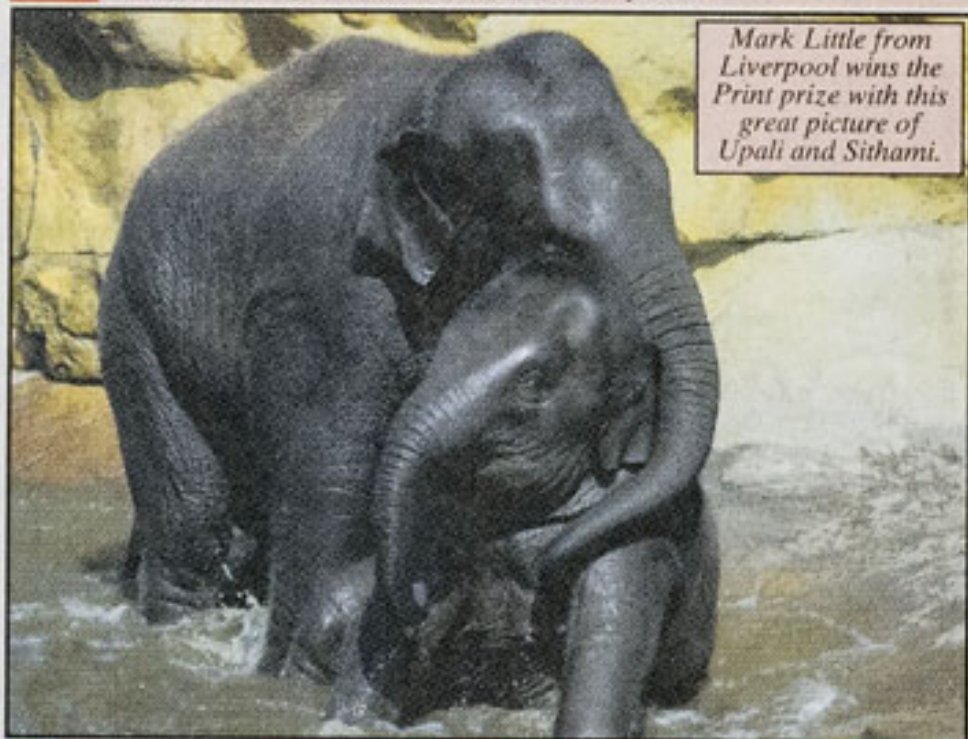
Flamingo reflections win the Best Slide title for David Tolliday from Macclesfield

Gillian Storey of Durham wins the Best Garden Slide



TOP PHOTOS

When the judges announced the results of the Air Mauritius Millennium Photographic Competition, their verdict was that it 'was very difficult to make the final choices' showing that not only was the standard very high indeed - but the competition had attracted more entries than ever before! 'Cameras and film get better and better, but also photographers have much better eyes for a great picture - and with there being so many great opportunities around the zoo - like the elephant shower and swimming pool - no wonder that standards have improved' was a comment from Marketing Manager, Chris Vere. A selection of the best slides was shown at the Chester Photographic Society joint meeting with the Royal Photographic Society in November in the Lecture Theatre, when the RPS Annual Winners were shown. This welcome initiative came from Miss Jean Dixon who founded the Zoo Competition and who helps with its organisation each year. The awards were made at a special presentation on Saturday 27th January. We are so grateful to all our friends and suppliers who have helped with prizes. Take a bow - Air Mauritius and Sun International Hotels for flights and holiday in Mauritius, Jaguar Cars, Kodak, Max Spielmann, Ness Photo Labs, Calumet, Jessops and Bridgemere Garden World - we love you all.



Mark Little from Liverpool wins the Print prize with this great picture of Upali and Sithami.

JESSOPS

No.1 in PHOTOGRAPHY

GROSVENOR ST, CHESTER and
ST. WERBURGH ST, CHESTER



IMAGE CREATION

DIGITAL IMAGING

PHOTO RESTORATION

Processors for the Zoo

"For all your Art and Photographic requirements"

'PROFESSIONAL / EXPRESS PHOTOLAB'

29 CHESTER ROAD ELLESMERE PORT
SOUTH WIRRAL L65 9BE

Kodak



35mm & APS FILMS
on sale in the **ARK & FOUNTAIN SHOP**

www.kodak.co.uk/go/easydigital

2001 COMPETITION RUNS FROM APRIL

Send SAE to Marketing Office, Chester Zoo, Chester CH 2 1 LH for entry form



Stuart Barber from Middlewich, Cheshire is best Junior with this handsome chimpanzee picture

Ness Visual Technology



Kershaw Street, Widnes WA8 7JH

One of the Cheshire's leading professional photographic laboratories.

A Zoo supplier for over 13 years.

0151 - 424 - 0514

2000 HONOURS

- Air Mauritius Photographer of the Year - Ed Makin from Liverpool.
- Best Print - Mark Little from Liverpool
- Runner up - Trevor Bryan from Northwich
- Best Slide - David Tolliday from Macclesfield
- Runner up - Ann Toon from Arnsdale, Cumbria
- Best Garden Slide - Gillian Storey from Croxdale, Co. Durham
- Best Garden Print - Barbara Ward from Hornchurch, Essex
- Juniors - Stuart Barber from Middlewich
- Runner up - Alastair Hills from Hough, near Crewe
- Digital - Mike Reynolds from Chester

LOOKING FORWARD

For full details of the 2001 Competition - now recognised as the UK's top Zoo Photographic event just send an SAE to Photo Competition, Chester Zoo, Upton by Chester, Chester CH2 1LH or download an entry form from our web site www.chesterzoo.org

As well as the sections for best print, best slide, best gardens and best junior, there is the digital section for work taken with a digital camera or which has been digitally enhanced from scanning from a conventional print, negative or slide. Special Certificates of Merit are awarded month by month from May - and all entries are judged for the final awards. The competition closes on 31st October 2001, and the theme is **My best 2001 picture** from Chester Zoo.

CALUMET

Professional Photographic Suppliers To The Zoo

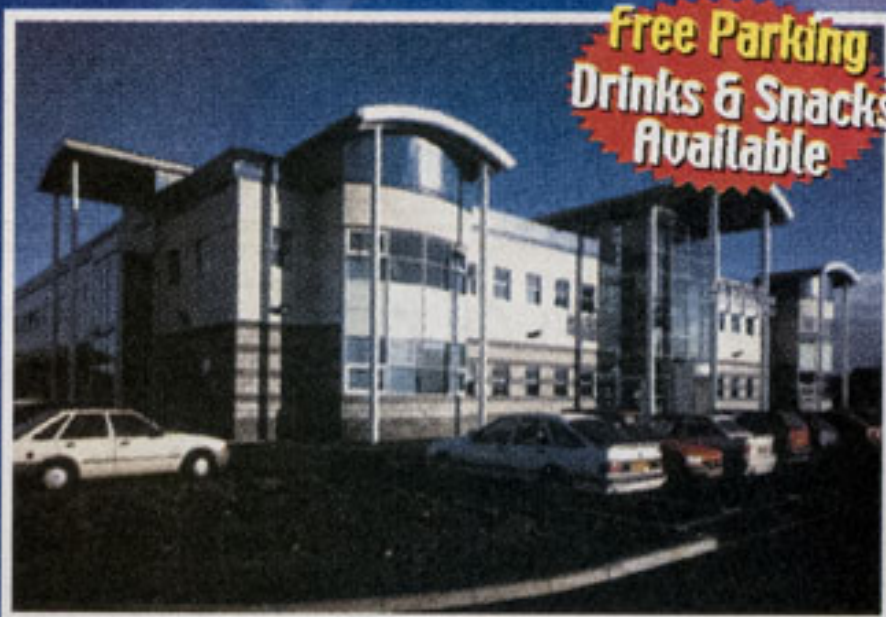
7 Century Building
Summers Road
Brunswick Industrial Park
Liverpool L3 4BL
Telephone: 0151 709 1665



PHOTO TECHNOLOGY VISITOR CENTRE

Unique & Educational

adults only
£2.99



Free Parking
Drinks & Snacks
Available

FREE for KIDS*

when accompanied by a paying adult.
*Up to age 16.

FREE PHOTOS*

FOR PAYING VISITORS
*35mm/APS 24/25exp (6"x4")



SEE OFFER
PAGE 53



Europe's No.1 Advanced Photo Processing Laboratory

Experience 21st Century Technology
Digital Services and Max On-Line

Coach Tours and
Special Interest
Groups Welcome

Hi-Speed Photo Processing
Watch Us Process Films to Photos

CROSS LANE - WALLASEY - WIRRAL CH45 8RH
JUNCTION 1 M53 FOLLOW AA. SIGNS FOR PHOTO VISITOR CENTRE
FOR DETAILS CALL 0151 638 5938 • www.maxspielmann.com



Keeper for a Day

AN APOLOGY FOR BEING SO SUCCESSFUL NO MORE BOOKINGS FOR THE TIME BEING

Thanks to a great idea from Team Leader of the Primates section, Andrew Lenihan, the Zoo has the wonderful **keeper for the day scheme**. The scheme has been so popular in 2000 that with the gifts that been brought for Christmas we have stopped taking further bookings so that those how have the gift certificates can use them this Spring and Summer. We apologise for this but it is important that everybody who is a keeper for the day has one to one contact with the keepers who are responsible for safety and animal security. Watch the Zoo website - www.chesterzoo.org for an announcement of when we can start to accept further bookings!

~ Zoo Events ~

Liz Child, Visitor Services Manager and Jane Lawson, Events Manager have created these special days to tempt you to the zoo!
 Further details from Events Office - 01244 650209.

Saturday and Sunday 17th/18th March. Uniform weekend.
 Special price of £5 for all uniformed youth groups - Rainbows, Beavers, Cub Scouts, Brownies, Guides etc. and their adult helpers

Sunday 25th March Mothering Sunday Lunch
 with special Gift. Pre-booking essential.

Saturday 7th April. Teddy Bears Picnic
 Children bearing bears are our Guests as long as they bring an adult too who pays standard price. One child, one bear, one adult!

Friday 18th May Family Picnic Evening
 Must be pre-booked.

Friday 15th June Evening Zoo Safari and BBQ.
 Booking essential.

Friday 13th July Primate Evening and Dinner.
 Tour the Chimpanzee and Orang Quarters, with dinner to follow plus a raffle for a *Keeper for the Day!* Booking essential.

Friday 27th July Evening Jaguar Experience and Dinner.
 Drinks with the Jaguars, then dinner in the Oakfield.
 Booking Essential

For details of the special events organised by Education Division - see page 10

TWYXCROSS ZOO

Centre For Conservation and Education



- Pet's Corner
- Children's Adventure Playground
- Undercover Soft Play Area
- Free Parking
- Gift Shops
- Cafeterias, Licensed Bar, Picnic Area

PLUS SUMMER ATTRACTIONS

OPEN DAILY FROM 10AM

Located on A444 Burton to Nuneaton Road,
 directly off M42 Junction 11

TEL: 01827 880250/880440

I'm getting Married in the Boardroom!

Chester City Council have agreed that Civil Weddings may take place in the panelled Boardroom of the Oakfield House at the Zoo with up to 45 guests at the ceremony. So get wed and have your reception for up to 120 guests in our wonderful surroundings. Full details from Jane Lawson 01244 650209.

Noah's Ark Diary

You will be welcome aboard the Zoo Noah's Ark at:

Liverpool Show

St Helens Show

Wirral Show

Nantwich show

Southport Flower Show

Chester Lord Mayor's Parade and

Chester Roodee Festival of Transport

Liverpool Lord Mayor's Parade

Halton Show

Warrington Disability Day (Walton Park)

and maybe others too!

The Zoo will be at the Royal Horticultural Society Show

at Tatton Park with a stand and full details of

Membership and the Gardens.

We are grateful to maintenance foreman and
 "Ark Shipwright" - Paul Lindop for the ten year refit.

CHESTER ZOO - ALWAYS NEW

BRITAIN'S FINEST SUMMER SHOW

In Association with the
Daily Mail

The Southport Flower Show

theme: *fine art*



Victoria Park
August 16/17/18

Advance Tickets:

0870 4444226

www.southportflowershow.co.uk

Spend a great day out shopping.

BRING THIS AD TO CLAIM YOUR COUPON SAVINGS BOOK

Have a great day out shopping at McArthurGlen Designer Outlet Cheshire Oaks. Along with our usual savings of up to 50% across a wide range of top brands including designer label fashions and homewares stores, take advantage of this great offer.

Simply bring this ad along to the Information Desk and you'll receive a Coupon Savings Book entitling you to even bigger discounts.



035



OPENING HOURS:

Monday & Friday	10am - 6pm
Tuesday to Thursday	10am - 8pm
Saturday	9am - 6pm
Sunday	11am - 5pm

*Times subject to change

DIRECTIONS JUNCTION 10 M53, TELEPHONE: 0151 348 5604

A day in the life of Stephanie, our Resident Vet!

Stephanie Sanderson, who joined the Zoo in 1999, is our Veterinary Resident. She's close at hand in the Zoo for every veterinary problem – and her trusty *right hand* is Veterinary Nurse, Jane McDonald. 2001 will be a very exciting year for both of them because we have plans for a new Veterinary Health Centre to be built close to the new office block that is next door to "Spirit of the Jaguar".



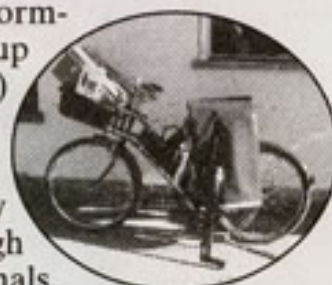
Not at Chester, but in China, where Stephanie visited the Chengdu Giant Panda Breeding base in 2000

Stephanie writes

With over 500 species to look after, life is never dull for Chester Zoo's Veterinary department. Our in-house veterinary team comprises of myself and Jane McDonald (veterinary nurse). In addition we get invaluable clinical support from Noel Walker (Gatehouse Veterinary Hospital) and the Liverpool Veterinary School clinicians from Leahurst in the Wirral.

Our day starts at 8.00am with a morning meeting to discuss our plan of action for the day. The keepers phone up with requests for visits for any sick animals in their charge and we also schedule in routine preventative health care such as dentistry, hoof trimming, vaccinations, contraception, worming etc. Next we load up

our trusty vehicle - the *vetmobile* (right) and set off on our rounds.



Barring emergencies, the big jobs come first. Our animals often need to be fully anaesthetised before they are safe enough to handle and unlike with domestic animals, even a comparatively simple task – such as loading up an animal to go to another zoo – may require our involvement. The anaesthetic drugs are administered by dart gun and usually take 15min or so to take effect. We can then go in, give the animal a full health check and load it up.

Luckily not all our patients are so difficult to handle. See *Regis* the Komodo dragon below lying still while we X-rayed his chest. He did have quite a serious pneumonia last year but I am glad to say that with the course of antibiotics and the dedicated nursing care of his keepers, he has been making good progress.

Having finished our morning rounds we return to the office to write up the day's cases. Our health records are now fully computerised and as well as helping us keep track of the individual problems of over 6000 animals it allows us to submit our findings to the international species inventory system (ISIS) database. Membership of ISIS allows us to share our experiences to the benefit of zoo animals around the world.

Afternoons often also involve some pathology. In a collection so large it is inevitable that we should lose animals on a regular basis. Part of our responsibilities are to determine cause of death and also to collect samples so as to learn more about the anatomy, physiology and patterns of disease in the rare and endangered species in our care.

Every day here at the zoo is a surprise and holds something new. Special days have included seeing the birth of *Po Chin* the baby elephant and *Jester* the giraffe, watching *Regis* take his first steps after his long illness and also sad occurrences such as the death of *Esther* the black rhino and of *Meg* our 53 year old chimpanzee – a great great grandmother! **As part of the veterinary team I feel very privileged to be able to become involved in the lives of these wonderful animals.**



X ray for Regis the Komodo Dragon

Whatever your insurance needs we can offer you
 a comprehensive, competitive broking service.

COMMERCIAL INSURANCES

Our innovative approach to solving problems and commitment to quality mean that talking to our specialists could well be a very rewarding experience for your business.

FINANCIAL SERVICES

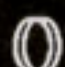
Through Heath Lambert Financial Services Limited* we can provide you with a full range of financial services and impartial advice designed to fulfil your needs and those of your family and your employees.

*Regulated by the Personal Investment Authority (PIA).

Call us on: 0161 935 2935

RIVERSIDE
 CLOISTER HOUSE
 NEW BAILEY STREET
 MANCHESTER
 M3 5AG

FAX: 0161 839 2839

 Heath Lambert Group



CHESTER ZOO VETERINARY TEAM



A Cheetah check over includes the teeth.

THE WORLD OF GLASS ST HELENS

glass blowing demonstrations

Enjoy a magical day out

- Museum Galleries
- Café and Shop


underground tunnels

multimedia show

Open 10am-5pm daily. www.worldofglass.com
 The World of Glass, Chalon Way East
 St Helens, Merseyside WA10 1BX

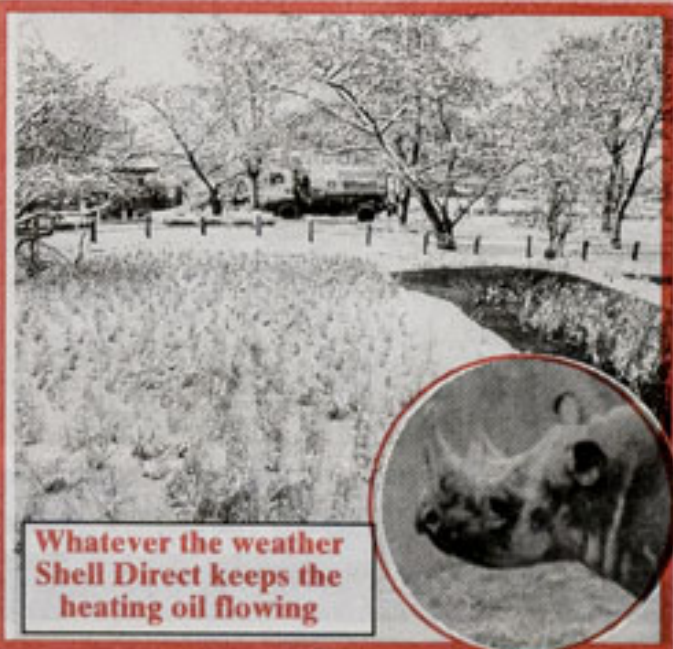
INFORMATION HOTLINE: 08707 444 777





Elephants, Rhinos, Bats in the Twilight Zone, Monkeys, Chimpanzess and Orang Utans are just some of the endangered species kept warm by the Zoo using heating oil supplied by **SHELL DIRECT**

For more information
FREEPHONE 0800 339977



Whatever the weather Shell Direct keeps the heating oil flowing



GREAT DAYS OUT FOR ALL

CHESTER

Q: WHAT HAVE THEY ALL GOT IN COMMON?



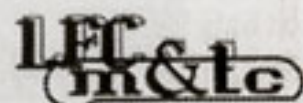
LIVERPOOL FC MUSEUM & TOUR CENTRE

See the League Championship trophy and all four European Cups. Stand on the old Spion Kop. Visit the team's dressing rooms. Walk down the players' tunnel. Touch the legendary 'This is Anfield' sign. Sit in the stadium dugout. Experience the heart and soul of English football's greatest football club.

BOOKING HOTLINE
0151 260 6677

Museum open every day of the week from 10am to 5pm
Last admission 4pm (one hour before kick-off on matchdays). No stadium tours of matchdays.
Cost Museum & tour: adults £8.50, children/OAPs £5.50, families £23.00.
Museum only: adults £5.00, children/OAPs £3.00, families £13.00. Special deals for schools and groups.
We strongly recommend booking in advance for stadium tours.
All times and prices subject to change at short notice.

*Plus Billy's boots, Kenny's medals and Shank's tracksuit



A: WE'VE GOT THE SHIRTS OFF THEIR BACKS*

SEA LIFE

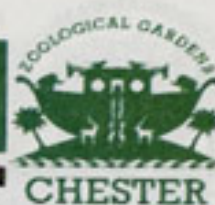
*Closer than you ever
imagined ...
... to a journey of discovery.*



For further information please telephone: Blackpool Sea Life Centre 01253 622445
or National Sea Life Centre, Birmingham 0121 643 6777

See page 53 for child voucher

SO MUCH TO SEE AND DO



Wherever you go in Eureka! you can touch, listen and smell as well as look. With over 400 hands-on exhibits to explore, you'll be amazed at what you will discover about yourself and the world around!

A voyage of discovery

EUREKA!



The Museum for Children

Halifax, West Yorkshire
www.eureka.org.uk

Offer see page 51

MERSEYSIDE MARITIME MUSEUM

don't miss the boat

Set in the historic heart of Liverpool's magnificent waterfront, the Merseyside Maritime Museum offers a unique insight into the history of the great port of Liverpool, its ships and its people. One of the largest maritime museums in Europe, it has captured the romance as well as the hard reality of working on the docks and aboard ship.

Don't miss the boat for a great day out.

OPENING TIMES

Open daily 10am to 5pm
 Café open daily until 4.30pm

ADMISSION CHARGE

Admission included in the 12 month NMGM Eight Pass. Standard £3, Concessions £1.50. Free admission for seniors (60 and over) and children* (16 and under). *Children under 12 must be accompanied by an adult.

GROUP VISITS

Groups are particularly welcomed, 25% discount for groups of 20 or more
 Telephone 0151 478 4441 for group bookings
 Group catering enquiries telephone 0151 478 4448

MERSEYSIDE MARITIME MUSEUM

Albert Dock
 Liverpool L3 4AG
 Tel: 0151 478 4499

www.nmgm.org.uk



For a Great Day Out



Why not try

The **Welshpool & Llanfair Railway** Experience

A steam train ride into the delightful Banwy valley and much more!

An hour from the Midlands - but a century away in time.

Children Travel For £1

Telephone 01938 810441

www.wllr.org.uk



Tales worth telling

The Zoo's skilled team of presenters are now amongst the best known faces at the zoo - for as the visitors move around for feeding times - the presenters move around too! Spot them with their white T shirts and shoulder slung amplifiers or using radio mikes at the elephants and lions. Summer and winter alike, they give the inside stories of what is happening on the paddocks - often in dialogue with the keepers, telling everyone more about what is happening. It's not just outside too - there are always Presenters on duty inside the *Twilight Zone Bat Cave*.

Check the times of talks as you arrive at the Zoo - there are notices on the entrance and Information can give you all the details. And presenters are always happy to answer questions!

WELSH MEDIAEVAL BANQUET

There will always a a Welcome

at **Ruthin castle**



ADVANCE BOOKING ONLY

Tel: 01824 703435

Website: www.ruthincastle.co.uk
Email: reservations@ruthincastle.co.uk



BODAFON FARM PARK and ANGLESEY BIRD WORLD & BIRD of PREY CENTRE have joined forces to offer you a memorable day out in **LLANDUDNO**

Just at the end of the Promenade by the Little Orme, with panoramic views of Llandudno, the Farm Park and Bird Centre will appeal to all ages all year round.

For further information contact:
BODAFON PARK, LLANDUDNO Tel: 01492 549060

BODAFON FARM PARK has a stunning licensed restaurant courtyard and function room which are suitable for a variety of uses. Weddings (including Civil Wedding Ceremonies), children's parties, barbecue nights, candlelight 'Owl Evenings', private functions and much more. Simply give us a call to check it out. We are also open daily for drinks, snacks and main meals. Not only are we a working farm we also have a children's farm, rare animals, pony, tractor and trailer rides and an adventure play area with bouncy castle to add to the fun. We will happily collect you at the entrance to the Park if required.

ANGLESEY BIRD WORLD & BIRD of PREY CENTRE is now a registered Charity and is known as **Anglesey Bird World Trust**. We have recently relocated from Anglesey to Llandudno with one of the finest collections of owls in Wales. We look forward to meeting you all at the part for our unique **'Bird Experience'**



USE TESCO CLUBCARD POINTS AT THE ZOO

Three Attractions in One

AT THE WORLDS LARGEST WATER GARDEN CENTRE

The Palms Tropical Oasis,

a huge glasshouse where tropical birds, animals, fish and reptiles are at home amongst the lush tropical plants and cascading waters.

Stapeley Water Gardens,

with display pools, lake, fountains and water features. Full service garden centre, gift shop, tropical and cold water fish, and pet supplies. For all your water gardening requirements.

The Angling Centre,

the UK's premier angling store, with everything for the seasoned angler or complete beginner.



Stapeley Water Gardens, Nantwich, Cheshire CW5 7LH

TELEPHONE: 01270 623868

www.stapeleywatergardens.com email: stapeleywg@btinternet.com

1 mile south of Nantwich, Signposted from the M6 Jctn 16

Open: from 10am everyday except Christmas day



**SEE OFFER
PAGE 53**

Oswestry & The Welsh Borders 2001

LOVE from
SHROPSHIRE!

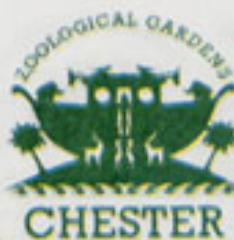
*Unwind, explore,
enjoy, discover,*

- Hospitality
- Rivers, lakes, waterfalls
- Markets, speciality shops
- Castles, myths, legends

*It's been kept quiet,
to discover our secret...*



...visit our website www.oswestry-welshborders.org.uk
or telephone 01691 662488/662753 for our 2001 brochure.



VALE ROYAL FOR ALL SEASONS

THE SALT MUSEUM



Britain's only Salt Museum tells the fascinating story of Cheshire's oldest industry.

SEE OFFER PAGE 53

THE SALT MUSEUM

is open six days a week
Tues-Fri 10-5, Sat & Sun 2-5
and is well signposted from the A556 and from Northwich town centre.

The Museum has a shop, coffee shop and free car park. There is a changing programme of free temporary exhibitions.

Admission Charged.

ENQUIRIES TO • THE SALT MUSEUM
162 LONDON ROAD, NORTHWICH. TEL: 01606 41331



Tatton Park's Japanese Garden

Cheshire Pleases

It is the sheer variety of Cheshire for days out that always amazes. Consider two of the UK's largest Garden Centres at Bridgemere and Stapely - both having well over a million visitors each year. *Blue Planet* Aquarium has the incredible walk through tunnel with sharks above your head - the Boat Museum nearby for history re-created - and a very useful Holiday Inn, Italian Restaurant and Craft Workshops on site. Real country tastes at the Cheshire Ice Cream Farm at Tattenhall - see the cows being milked. Our City of Chester is one of the *Walled Towns*, Dewa Roman Experience, The Grosvenor Museum and the Military Museum almost next door. Jessop's two branches for all your camera needs and Guide Friday's ever circling buses for a hop on, hop off way to discover the City. *First Crossville* provide the weekday Zoo bus services, 4, 14, 8 and X8 from the Town Hall Bus Exchange. There is the helpful Town Hall Tourist Information - and the Chester Visitor Centre in Vicars Lane opposite the site of the Amphitheatre. Our very own Motorway service area - at Junction 14 - with Roadchef and the Travel Inn - and leaflets on almost everything in the Tourist Information Centre. Cheshire Oaks Outlet Village is the largest of its type in the country, happily into Phase III and now with Borders Books, *Blue Planet*, The Coliseum and Warner Village Cinema alongside. Out into the countryside - Ness Gardens and Gordale Garden centre, Gothic charms at Cholmondeley Castle, Jodrell Bank Science Centre with the huge radio telescope and Hack Green Secret Nuclear Shelter. For real history - The Salt Museum at Northwich, Lion Salt works nearby and Vale Royal's jewel, the unique Anderton Boat Lift getting nearer and nearer to opening! Tatton Park - over 3,000 acres and hosts to the Royal Horticultural Society's third show and the wonders of Port Sunlight with the gems of the Lady Lever Gallery, and the Heritage Centre.

What a variety act!

There's more - much more - and both Chester City Council, and Cheshire County Council are good starters. Details on pages 4 & 5 - City and 46 & 47 for the County.

DISCOVER VALE ROYAL

... a place for all seasons

Vale Royal, Cheshire's vibrant and varied shopping experiences, fascinating heritage and meandering waterways all make Vale Royal a special place to visit.

For further information contact the
Tourism Officer,
Vale Royal Borough Council,
Wyvern House,
Winsford CW7 1AH
Tel: 01606 867531



DOUBLE COFFEE - PA

BR GA



CESHIRE FOR VARIETY

DISCOVER TATTON Park



ONE OF ENGLAND'S FINEST HISTORIC ESTATES

Neo Classical Mansion ~ 50 Acres of Garden
Tudor Old Hall ~ 1930's Working Farm
1000 Acre Parkland ~ Restaurant
Gift & Speciality Food Shops
Discounts for Groups Available
Special Events ~ Children's Play Area

Tatton Park is truly one of England's finest historic estates, yet with more to offer than most. The fine Mansion and gardens are complemented by a working farm with rare breeds, a playground, 1000 acre deer park, Tudor Old Hall, garden maze, restaurant and shops

"It's made for a family day out"

Tatton Park, Knutsford, Cheshire, WA16 6QN

Events: **01625 534405** General Information: **01625 534400**



PORT — SUNLIGHT Village



Discover the delightful garden village of Port Sunlight, founded in 1888 by William Hesketh Lever and named after his famous Sunlight soap. Explore the fascinating history of this model community at the Heritage Centre. Follow our Village Trail or ask about our seasonal programme of guided walking tours.

Heritage Centre, 95 Greendale Road,
Port Sunlight, Wirral. Tel: 0151 644 6466.

Open: 10am - 4pm daily (11am winter weekends)
Guided village tours. Discounted group rates.
Free school visits.



**DOUBLE CUP OF
COFFEE OFFER
- PAGE 49**



*Relax and be
inspired at*

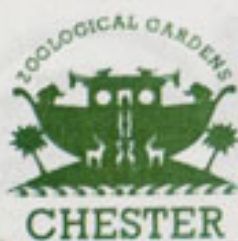


**BRIDGEMERE
GARDEN WORLD**



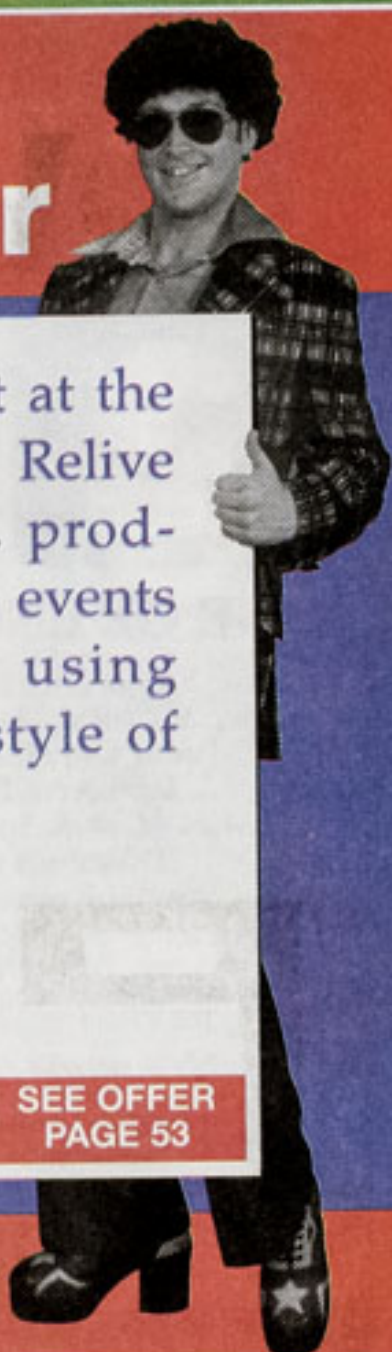
- 6 acres of free gardens
- over 5,000 different plants
- gifts, clothes & accessories
- garden & conservatory furniture
- Ripples Waterlife & HobbyCraft superstore
- spacious coffee shop

For more information please contact our Marketing Department on 01270 521100
or e-mail marketing@bridgemere.co.uk. Visit our website: www.bridgemere.co.uk



GREAT DAYS OUT FOR ALL

Visit the tourist attraction of the year



10 20 30 40 50

Opie's museum of memories

60 70 80 90 00

The wonderful day out at the Wigan Pier Experience. Relive 100 years of fashions, products, music, people and events - all brought to life using Wigan Pier's unique style of interpretation.



01942 323 666

www.wiganpier.net

SEE OFFER PAGE 53

The experience of a lifetime

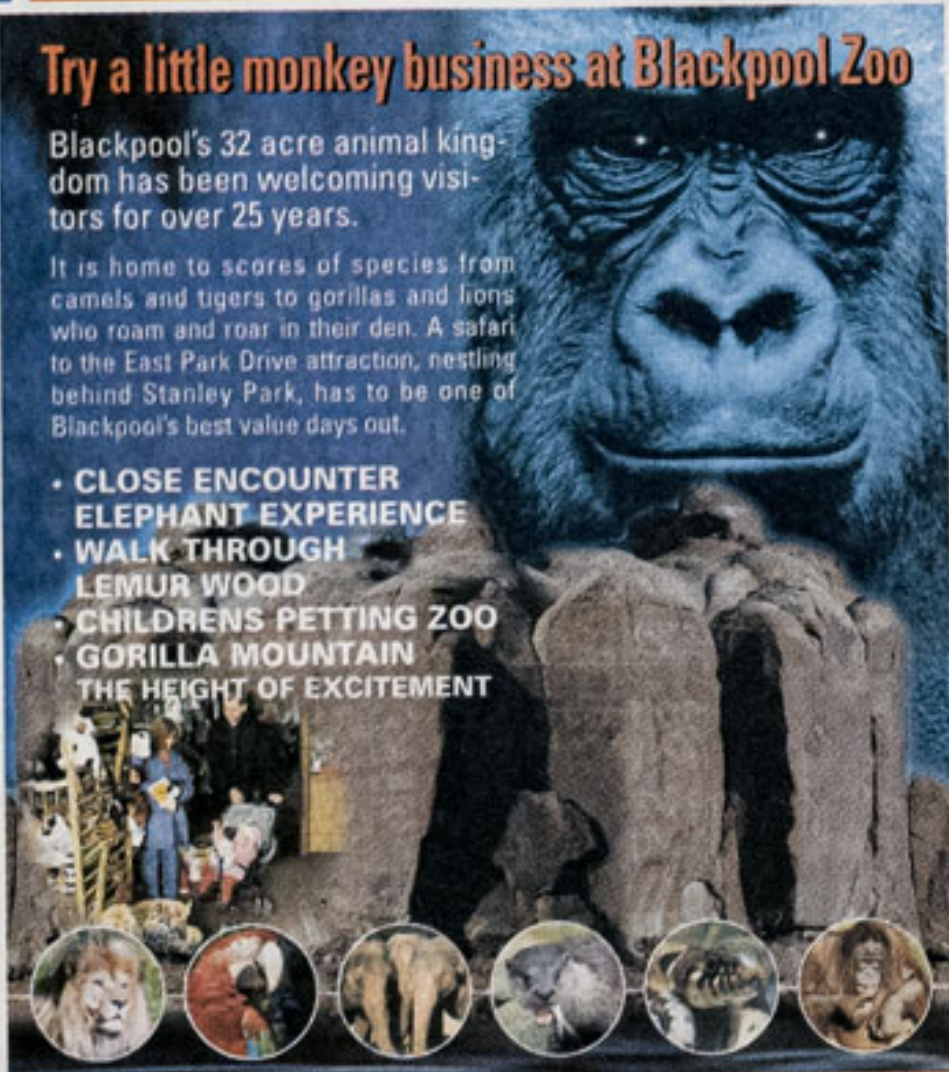
(Opie's Museum of Memories was awarded NWTB Visitor Attraction of the Year in 2000)

Try a little monkey business at Blackpool Zoo

Blackpool's 32 acre animal kingdom has been welcoming visitors for over 25 years.

It is home to scores of species from camels and tigers to gorillas and lions who roam and roar in their den. A safari to the East Park Drive attraction, nestling behind Stanley Park, has to be one of Blackpool's best value days out.

- CLOSE ENCOUNTER
- ELEPHANT EXPERIENCE
- WALK THROUGH LEMUR WOOD
- CHILDRENS PETTING ZOO
- GORILLA MOUNTAIN
- THE HEIGHT OF EXCITEMENT



For further details and opening times call Blackpool Zoo Park on 01253 830830
Blackpool Zoo, East Park Drive, Blackpool, Lancs FY3 8PP
www.blackpoolzoo.org.uk

Award Winners



ERDDIG, WREXHAM

Off A483 Wrexham By-Pass, just south of town

- ★ Pony Rides On George, Crystal, Max or Tiffany
- ★ Meet Silver the Shire Horse
- ★ See Brutus the Stag
- ★ Feed the Lambs ★ Cafe
- ★ Tractor Tours ★ Shop

A 300 acre working farm with adventure playground cuddle corner and lots more.

OPEN everyday Feb-mid Nov.
Local for schools

01978 840697



WONDERFUL WIRRAL

WIRRAL



Leisure Services and Tourism Department, Westminster House, Hamilton Street, Birkenhead,
Wirral CH41 5FN
Tel: 0151 647 2366, Fax: 0151 666 1343



GREAT DAYS OUT

Variety, interest, excitement, relaxation, exercise, culture, sights, sounds and experience. Cheshire has something for everyone. And with our colourful "Days Out in Cheshire" guide, you'll enjoy one magical experience after another.



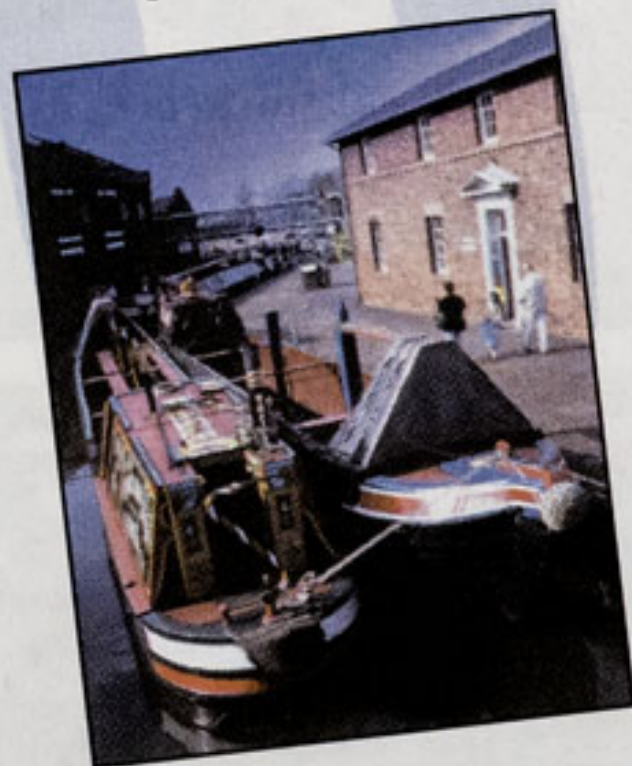
The brochure features over 60 of Cheshire's top attractions - everything from historic stately homes to a top secret nuclear bunker, and from a factory making chocolate to a deep sea aquarium offering close encounters with sharks.

Journey back in time to uncover your heritage through Cheshire's many castles, churches, watermills, museums and galleries.

Be spoiled for choice with almost 20 stately homes, gardens and garden centres, from traditional

Cheshire "black and white" halls and splendid Victorian mansions to relaxing water gardens and fields of aromatic lavender.

If arts and crafts are your main interest, Cheshire is a must for you. Traditional skills, ancient crafts and designs-for-today are waiting for you to discover.



For the science minded there are hours of pure delight in store at fascinating science centres and exciting museums.



CESHIRE ALWAYS PLEASES

And all the family will find something to enjoy at one of Cheshire's fascinating & educational animal attractions and family farms.

We could go on and on. . .

FOR 2001

But you can see for yourself - the "Days Out in Cheshire" guide is available, free-of-charge, at Cheshire libraries, attractions, Tourist Information Centres, or direct from us on the number below.

It can also be ordered on line at www.cheshire.gov.uk/tourism/form.htm
Or visit our website at www.cheshire.gov.uk/tourism

Further information on places to stay, events and easy access for disabled people is also available.



DAYS OUT in Cheshire

2001/02



CESHIRE
COUNTY COUNCIL
Environment
www.cheshire.gov.uk/tourism

DAYS OUT IN CESHIRE



Cheshire County Council
Economic Development Unit
Promotions and Tourism
County Hall,
Chester,
CH1 1SF
Tel: 01244 603127 (voice)
or 01244 603107 (text)
e-mail: evanslj@cheshire.gov.uk

Please complete the form below to obtain your FREE copy of the new Days Out in Cheshire 2001/2002 guide. Or order on-line at www.cheshire.gov.uk/tourism/form.htm

Name:

Address:

Post Code:

CZN

Around the World

The Zoo has been involved in over 30 countries in 2000 - spreading the conservation message, giving direct help in saving wildlife from disasters, giving and receiving vital information to further our mission.

Penguin Rescue

Over 20,000 penguins were affected by a tanker oil spill off the Cape of Good Hope in South Africa - in the middle of their breeding season in June 2000. Urgent appeals for help from the South African National Foundation for the Conservation of Coastal Birds were answered by the Zoo sending our Penguin expert, Keeper Karen Davies, who spent three weeks on the project, supervising a team of 20 helpers feeding the birds. Thanks to Karen and the other volunteers, over 19,000 birds were saved.

We 'adopted' an island

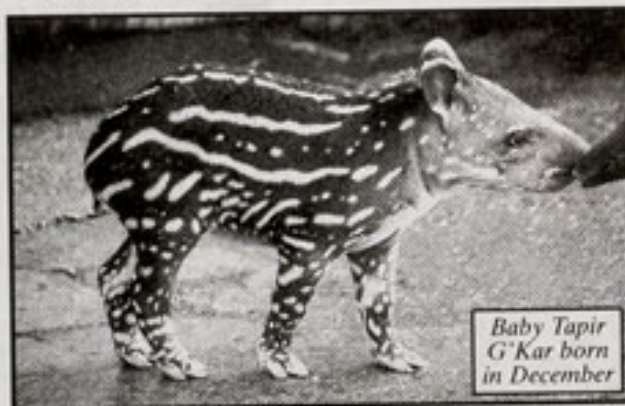
Polillo Island in the Philippines peninsula has been adopted by the Zoo, following a visit by staff in 1999. It now has a wildlife warden, financed by our outreach programme. Later in the year, the zoo helped finance a team from the University of Oxford, who won the prestigious BP Conservation award after an expedition to the island, and rediscovered the Polillo Forest Frog - hitherto feared extinct.

Mauritius Parrots

Bird Keeper Anne Morris has been able to help with the Echo Parakeet breeding programme on the Indian Ocean island of Mauritius, and spent three months on secondment to the project leader this summer. It was Anne's first trip abroad and she will be writing up her story in the *Chester Zoo Life* members' magazine later in the year.

Our Chinese Twins

In October we were honoured to receive a delegation of scientists and senior vets from Chengdu Research Base of Giant Panda Breeding and Chengdu Zoo, following an earlier visit by the Zoo to China. As a result, we have signed a formal agreement for a collaborative relationship, which will mean work on the conservation, husbandry, rearing, disease prevention and treatment of Giant Pandas and other endangered species. Staff exchanges, training and interchange of information will follow from this agreement. Professor Gordon McGregor Reid, our Zoo Director; Mr Li Guanghan, Director of the Breeding Base and Mr Tian Yuzhong, Director of Chengdu Zoo signed the protocol.



Baby Tapir
G'Kar born
in December

ROUNDAABOUT A-Z GUIDE OF WHERE TO GO AND WHAT TO DO

Save £££s with this part of *Chester Zoo News*. Many of our advertisers have special offers for you on the coupons on pages 49 - 54. Read the offers carefully, and please make sure you understand the terms. We want you to get great value, but the offers, terms and conditions rest with the attraction, and not Chester Zoo. If in doubt - ring the information lines

Afon Wen Trading Estate at Caerwys, near Mold has bargains for everyone. There are thousands of exciting ideas. Celtic jewellery, pottery, turned wood, hand made cards, glass and more! Collectable antiques at prices you can afford. Round off the day in the relaxing restaurant. Free entrance, free parking, open 9.30 - 5.30 Tuesdays - Sundays - but open Bank Holiday Mondays of course! See ad. page 2. **Anglesey Bird World and Bird of Prey Centre** is now a registered charity as Anglesey Bird World Trust and has now moved to Llandudno alongside Bodafon Farm Park at the end of the promenade by the Little Orme. 'Owl Evenings' are one of the specialities! See p 40. **Anglesey Sea Zoo** is only 90 minutes from Chester. It recreates the natural habitats found in our seas. Baby lobsters and huge conger eels feature in a 'shipwreck' and dodge back from crashing waves! Fish for crabs off the re-created pier. Delicious meals in the Coffee Shop, have some homemade fudge, fish for a pearl and see sea salt being harvested. See p.30 and offer on p.49 opposite. **Arley Hall**, five minutes from the M 56/M6 near Northwich has one of the finest gardens in the North. Bluebell Walks, guided by Lord Ashbrook take you to the Big Wood - not normally open, on 5 - 7 May, Spring Garden Day 20th May. Special events, fireworks, concerts and Craft Fairs. See p 20.



Anglesey
Sea Zoo

Bala Lake Railway means narrow gauge steam alongside Wales' largest natural lake, inside the Snowdonia National Park. Wildfowl and herons on the lake. Best base for a visit is Llanuwchllyn Station, with facilities and car parking. Services Easter - end September and *Santa Specials*. Volunteer help welcome. See p 55. **Birds Eye Walls** make the Zoo's favourite ice creams and frozen confectionery. From all kiosks **Blackbrook** - on the moors at Winkhill near Leek in Staffordshire - rare birds, an aquarium, animals to pet! **Bodafon Farm Park** at Llandudno has joined forces with Anglesey Bird World - see p 40 for a great time for all the family on this working farm with special children's area. Lots of facilities too. Civil weddings, licensed restaurant and functions. **Blackpool Zoo** in Stanley Park is justly famous for Penguins, Gibbons, Giraffes and Camels - and is wonderful place for a full day's entertainment. Plenty of car parking, miniature railway, shops and cafeterias. Lots of space for youngsters. See p 44. **Blakemere Craft Centre** on Chester Road, Sandiway, Northwich has 25 shops - jewels to teddy bears and workshops with demonstrations and drop-in courses for children. Gardenlands Nursery, Cheshire Waterlife, **Joe Crow's** Giant indoor Play Area for children under 4ft 9" See the offer on page 49 opposite. **Sony** Playstations. Flying displays daily at 2 pm and 4 pm with birds of prey, Falconry Courses. See p 22. **Black Sheep Gallery** in the grounds of Harwarden Castle is a leading showcase for the region's traditional and contemporary art. The Annual Wildlife Art exhibition in March supports *Africat*. Exhibitions throughout the year. **Wings of Power and Beauty** in September features Birds of Prey and the Christmas *Baa Zaa* has unique works of art at under £100. Closed Mondays, see p 6. **Belfast Zoo** - well worth the visit - and getting steadily better each year - free reciprocal entry rights to our members of course, it is so easy to reach via Liverpool Airport too! **Blue Planet** next to Cheshire Oaks, Ellesmere Port is Britain's largest aquarium attraction, with two floors of self-guided interactive displays. Northern Streams, Caribbean Reef, Aquatheatre with divers' eye views, safari tunnel to view Europe's largest collection of sharks. Divers, presenters, free parking. Truly amazing! See p 12 and offer on page 49. There is a little gem tucked away at the **Boat Museum** at Ellesmere Port. As well as the UK's largest collection of inland waterways canal craft and eight indoor exhibitions, there is Porters' Row - dockworkers' cottages that chronicle changes in domestic life from the 1840's to the 1950's. Small, you think, until you board a narrowboat! How could a family live and work in so small a space. Judge for yourself. See p 12 and offer on opposite page.



Blue Planet
Aquarium



Royal Liver Assurance

is pleased to support the excellent work of the zoo.

And as providers of a wide range of financial products we can help to support you too!

To find out more about our extensive product range call:

Freephone 0800 66 1111

Any information provided from our free helpline relates solely to the products offered by Royal Liver Assurance Limited.

Royal Liver Assurance
 Head Office
 Royal Liver Building
 Liverpool L3 1HT
 Telephone 0151 236 1451
 Fax 0151 236 6711

Regulated by the Personal Investment Authority



SAVE THESE GREAT OFFERS

Sarah Bower drew the Fox

The National Trust's **Bodnant Garden** is one of the finest in the world - on South West slopes overlooking the River Conwy with views to Snowdonia. The collection is vast - 80 acres of gardens have colour and interest year round. Terrace Gardens, herbaceous borders, water lilies, wall shrubs and climbers. August and September for hydrangeas and eucryphias and dazzling October-berrying trees and shrubs. See p 55. **Borders Books, Music and Café** at the Coliseum, Cheshire Oaks opened in March 2000, and with 22,000 sq ft does have something for everyone. The **Value Zone** is a bargain hunter's paradise and leads through to the 'Back to Boyzone' music department. Every single item - 130,000+ - is computer tracked. Helpful staff can locate what you are looking for and there are regular events each month - authors' signings, quiz nights, children's story time and music review clubs. Details on in store leaflets. Café alongside for leisurely browsing. See p 31. **Bridgemere Garden World** near Nantwich 'the greatest gardening day out in Europe - whatever the weather' has more than 20 display gardens, and 5,000+ varieties for home and garden. Expert advice. Conservatory, garden and patio furniture. Gifts for all occasions. Egon Ronay recommended restaurant. **HobbyCraft** superstore for art fanatics. **Ripples Waterlife** for everyone wanting a water feature. A 51. Use J 15/16 M 6. See p 43. See offer this page. **Bristol Zoo** - always lots to see - and new Seal and Penguin Coasts. Chester Zoo Members enjoy free admission. **Brookside Miniature Railway** in 7 1/4" gauge has tremendous little trains and over half a mile of track through the famous garden centre at Macclesfield Road, Poynton. Cheshire. See p 13 and 2 for the price of 1 ride offer on this page.



Bridgemere Garden World

Camelot Theme Park, voted *North West Visitor Attraction of the Year* in 1999 is based on the Arthurian legend, with breathtaking rides and spectacular live shows. Cheer your favourite knight in daily jousts, marvel at Merlin's illusions and enjoy mad Edgar's juggling show. *The Rack* is Europe's only split coaster ride, *Fly The Dragon* or relax on *Squire Bumpkin's Friendly Farm*. Overnight packages available. See p 15 and *three for the price of two* offer on p 51. **Calumet** - always supportive of the Zoo's photographic competition - see page 33. **Carden Park Hotel and Leisure complex** is a wonderful hotel base to explore South Cheshire, and for golf enthusiasts - say no more! Disabled friendly too. See p 27. **Catalyst**, the 'hands on' Museum of the Chemical



Catalyst

Industry at Widnes is alongside Spike Island with its heritage trail and the Sankey Canal. Marvel at the 100-foot glass lift, leading to the roof top enclosed viewing platform and tour the four interactive galleries. See page 13 and free child offer on page 51. **Coke** - the favourite soft drink in the Zoo. See pages 28 and 29 for a wonderful sponsored painting with £1,300 of prizes, a handy coupon and some of the favourite baby elephant pictures. **Cheshire** - our County has heritage, gardens, beautiful countryside and magnificent visitor attractions. **Cheshire County Council's** Economic Development Unit - based at The Castle, Chester CH 1 1 SF spearheads the County's tourist information. There is the free *Days Out in Cheshire Guide* (get it at the Chester Services on the M56) or send an SAE for a copy. See pages 46 and 47 for more information or try

www.cheshire.gov.uk/tourism **Cheshire Ice Cream Farm** at Tattenhall is a great favourite - just off the A 41. 20 or more home made varieties to delight you on site or to take away. See the cows being milked! See p 6. **The Cheshire Military Museum** at the Castle won a £300,000+ Heritage Lottery Grant, so a refit has been the Order of the Day, with reopening from early summer. See how our local regiments - especially the 22nd (Cheshire) Regiment and Cheshire Yeomanry Volunteers - have contributed so much to this country. Learn about the gallantry of individual Cheshire soldiers - **Todger Jones** - who captured 102 Germans single handed - and won the VC. Interactive techniques will tell you more. See p6. **Cheshire Oaks** at Ellesmere Port - **McArthur Glenn's** largest outlet village in the UK - and now with its third phase open. **Coliseum Entertainment Centre**, **Blue Planet Aquarium**. See offer p.35. The **Chestnut Centre** - one of our favourites and a very popular Junior Members' trip near Chapel en le Frith in Derbyshire. 50 acres set in the Peak National Park. See Britain's only pair of Giant Otters, Europe's largest collection of multi specied otters and owls, wild cats, foxes and deer. Buzzards, Kestrels, Little Owls and Badgers are bred for eventual release back into the wild See p 14. **Chester Motorway Service Area** on the M56 at J 14 is run by **RoadChef** and the associated Travel Inn offers great value accommodation, so close to the City and the Zoo. Shell Petrol naturally! The Tourist Information Point by the shop and restaurant has many leaflets for local attractions. See p 9. **Chester City Council** run the invaluable Tourist Information Centre at the Town Hall, and the Chester Visitor Centre in Vicar's Lane. Their monthly *What's On Guide* is free, and the annual *Visitors' Guide* covering accommodation and attractions is the key to enjoying your stay in Chester and the surrounding area. See pages 4 and 5. **Chester Chronicle** - the big broadsheet with all the local news on Fridays - a great pre press team, printers and presses too that produce this magazine. **Cholmondeley** - The Marchioness of Cholmondeley's 1801 romantic Gothic Castle at Malpas just off the A 49 Whitechurch - Tarporley Road, is surrounded by the famous gardens including the Temple water garden, rose gardens and many mixed borders. Rare breeds - including llamas, children's play area and ample picnic sites. See p 10. **Colour Centre** at Chester Road, Whitby, Ellesmere Port is the Zoo's favourite mini lab, but do much more as well. Joan, Brian, Peter, Karen and Helen all know their photography. See p 32.



Have fun beneath the waves and **save £4.50** with **FREE** child admission (3-15) when an accompanying adult pays standard price.

Valid until December 16 2001 www.angleseyseazoo.co.uk

See page 30

See page 22

Joe Crow's **PLAYSTACKS**
Party Venue & Giant Play Barn

2 for 1 offer

Bring TWO children to Playstacks for the price of ONE
Valid any week day until 31st December 2001
01606 301321

e mail: playstacks@globalnet.co.uk
Blakemere Craft Centre - Chester Road
Sandiway - Northwich - Cheshire - CW8 2EB

Blue Planet

10% OFF or FREE CHILD (3-15)

When accompanied by adult paying standard price

Closing date 31st Dec 2001 Ref: 155/116

See page 12

The BOAT MUSEUM
FREE CHILD ENTRY

(aged 3 to 15)

with an adult paying standard price

Valid until 31st Dec 2001 - not to be used with any other offer



BRIDGEMERE GARDEN WORLD
See page 43

2 FREE CUPS OF OUR SPECIAL FILTER COFFEE IN THE RESTAURANT

Valid until 31st Dec 2001 - not to be used with any other offer

Brookside Miniature Railway
See page 12

Two rides for the price of one with this voucher

When name and address details overleaf are completed

Valid on any railway day until 31st Dec 2001

£5 off the price of a family Passport Ticket - see page 19

A Family Passport allows entry to all 9 Ironbridge Gorge Museums and is valid indefinitely - until you have visited everything once.

Ironbridge
VALLEY OF INVENTION

The Ironbridge Gorge Museums, Ironbridge, Telford, Shropshire TF8 7AW
Tel 01952 432 166

One voucher only per transaction. Valid until purchase of family passport only. Not to be used in conjunction with other entry ticket discount offers. A family is 2 adults and up to 5 children up to 18 years old. Valid to 30th November 2001.

KNOWSLEY SAFARI PARK

One child (3-15) FREE
with two adults paying standard price

See Page 11

Valid to 31st Dec 2001

Anglesey Sea Zoo**Free Child's Entry** See offer on Reverse
Save £4.50Name
Address
Postcode
Data may be stored electronically.
Not to be used with any other offer. CZN**Joe Crow's
PLAY STACKS**
Party Venue & Giant Play Barn**See 2 for
1 offer
on Reverse**Name
Address
Postcode
Data may be stored electronically.
Not to be used with any other offer. CZN**Blue Planet**
See offer on ReverseName
Address
Postcode
Data may be stored electronically.
Not to be used with any other offer. CZN**The BOAT MUSEUM**See offer on Reverse **Free Child's Admission**Name
Address
Postcode
Data may be stored electronically.
Not to be used with any other offer. CZN**Bridgemere****2 FREE CUPS OF COFFEE** See reverseName
Address
Postcode
Data may be stored electronically.
Not to be used with any other offer. CZN**Brookside Miniature Railway**See offer on Reverse **Two rides for the price of One**Name
Address
Postcode
Data may be stored electronically.
Not to be used with any other offer. CZN**Ironbridge Gorge Museums****£5 off Family Passport Ticket**
See special offer on reverse. See ad on page 19Name
Address
Postcode
Data may be stored electronically.
Not to be used with any other offer. CZN**Knowsley Safari Park****Free child with 2 adults** - see reverseName
Address
Postcode
Data may be stored electronically.
Not to be used with any other offer. CZN**OFFERS SAVE £££**

Dewa was the Roman name for Chester, and you can get some of the experience of one of the principal coloniae of *Britannia* at the **Dewa Roman Experience** in Pierpont Lane in the City. Step aboard a galley, see reconstructed streets - open every day from 9 - 5pm except Christmas Day and Boxing Day. See p 8. **Devotees** will love the Zoo Roman Garden. **Dublin Zoo** in spacious Phoenix Park has had major expansion and improvement schemes recently - Chester Zoo members enjoy free reciprocal admission rights.



East Lancashire Railway gives the thrill of standard gauge steam on the restored line from Bury to Rawtenstall via Ramsbottom. Special weekends include Thomas the Tank engine and Santa Specials. Trains run every weekend and you can learn to drive a steam engine. See p 20. **EASI-WAY** in Grange Road West Birkenhead can offer advice, sales and service of all mobility products - with a chance to *try before you buy*. See page 24. **Edinburgh Zoo** penguins are world famous - Chester Zoo members enjoy free admission thanks to the reciprocal membership scheme. Elephants - Chester is the place with two babies growing up this year *Assam* and *Po Chin*, Amazing **Erddig Hall** is two miles south of Wrexham, with a restored 18th Century walled garden, outbuildings, country park, restaurant and shop. Its 'upstairs downstairs world' has been lovingly preserved by The National Trust. Special events through the year. See p 17 and offer on p 51. **EUREKA!** - the Museum for Children is one of best days out in the North. Kids are No.1. They can touch, hear, smell and discover hundreds of fascinating things, with more than 400 hands on exhibits! Close to the centre of Halifax. They will be amazed at what they can discover about themselves and the world. Archimedes and his bath - the listening tree, DIY music, operating TV studio cameras, meet Scoot the robot and ride a skeleton bike!. See P 39 and offer on p 51. **www.eureka.org.uk** **Express Dairies** - the local branch office in Blacon, Chester are now able to offer doorstep deliveries of milk, cheeses, bread, yoghurts, plants, chocolates, biscuits, juices, potatoes and much more. They supply the zoo - naturally - and in particular the Chimpanzees enjoy the yoghurts! Freephone 0800 615 715. See p 17



East Lancashire Railway



Farm World is close to Erddig, near Wrexham and is a 300 acre, family owned working farm that is also an amazing place for a visit. Meet the stars of the farm, help feed the lambs, take a tractor tour, see the cows being milked - suddenly, you begin to appreciate the life of the countryside. P 44. **First Crosville** are our wonderful local bus company who bring most of our visitors by bus to the zoo on Mondays to Saturdays and Bank Holidays.

**First**

Services 4, 14, 8 and X8 are the key to getting to the Zoo. Service 4 runs Monday - Saturday, Chester to Ellesmere Port area, and normally has low entrance fully accessible, 'kneeling' buses with a low entrance step and wide door - perfect for baby buggies and wheelchairs. It serves the Pedestrian entrance in Caughall Road. Service 8 runs Monday - Saturday and on Bank Holidays to the Main entrance, X8 links the Main Entrance to Chester, Liverpool, Birkenhead and Ellesmere Port (Monday - Saturday) *All these services connect to Bache Merseyrail Electric Station.* **First Crosville** information line 01244 381515 / 0151 355 1203. **Fota**, wonderful Irish Zoo and Conservation Centre near Cork. Zoo Members get free admission. **Framework** - picture framers to the Zoo and many other discerning customers. 7 The Precinct - Bromborough -0151 334 8001 (by Romagno's Restaurant)

Gordale Nurseries are only a few miles from the Zoo on the A 540. 20 acres of displays 30,000 product lines from plants and shrubs to fences and foods. There's something here for you whether you are a gardening enthusiast or a weekend weeder! Open seven days a week. 'If it's not here, it's not worth having' says Manager Peter Nicholson whose family started the business 50 years ago. See offer p16. **Gowring's Mobility** are experts at car conversions for wheelchair users. They have over 30 years of experience with their *Chairman* conversions. See p 26. **Greenfield Valley Heritage Park, Holywell**, North Wales is easy to reach on the A 548, or via the A55 from Holywell exit and B 5121. Open April - October - is this the Borderlands best kept secret? You judge - there is a 16th Century farmhouse, a 19th century cottage, a Victorian schoolroom and farm buildings. Farm animals and an adventure playground too. Ask for details of the Victorian schoolroom experience - 01352 714172. P 55. The **Grosvenor Museum** in Chester is back in business after its Millennium makeover - and now offers step free access to all ground floor galleries. **Timeline** Gallery tells Chester's tale from pre history to today, discover the lives of soldiers in the XX Legion on tombstones used to repair the City Walls. Check the *Cataline* computer to explore what we have. Bright Conservatory shop for gifts for all ages. Free admission. See p 21. **Guide Friday's** buses circle the City of Chester, and with open tops are a great way see everything. Hop on, hop off as you choose - and keep the tickets for there is a useful discount at the Zoo! See p 21 and double money saving offer on p 51.



OFFERS SAVE £££

Hack Green, near Nantwich was once a top secret nuclear bunker for over 50 years. Now declassified, its 35,000 sq feet are a great place for a trip! It was part of a secret radar network, and cost £32 million to build. Always warm and dry - whatever the weather, NAAFI style cafeteria and a spy mouse trail for kids! www.hackgreen.co.uk See p 19 and offer on p 51. **Heath Lambert** are one of the world's leading independent insurance and re-insurance brokers - and write the zoo's policies that protect our visitors! Their approach is simple yet refreshingly different. They listen to clients, understand their requirements and provide leading edge risk solutions. They know that this is the only way really to focus on their priorities. They harness the imagination and expertise of their staff to deliver cost effective, innovative answers. See page 37. Wonderful **Haigh Country Park**, with Haigh Hall stands high above Wigan. There are year round events and ranger activities, including guided walks and well marked paths, the Craft gallery is open every day, with a chance to try batik, clay modelling or stencilling. haigh.hall.net See p



Haigh Country Park

19 and offer on p 51. **Hoo Farm Animal Kingdom** at Telford, Shropshire, home of the famous sheep steeplechase is a kid's paradise. Now in its 12th year, it is a high quality day out for all ages. See lambing, sheep shearing, feeding the lambs, egg collecting, milking and the amazing sheep steeplechases! Hands on family fun. Special events all through the year. Open March - December when Santa has his famous farmyard grotto. P 18. **Hillside Bird Oasis** - at Mobberley has a hidden touch of paradise. Winner of the *North West in Bloom Award* and *Vale Royal Attraction of the Year*. Meet Penguins, Pelicans Flamingos, Owls, Parrots, Kookaburras and Cranes. Personalised pictures and a pleasant afternoon tea at the Roebuck Inn alongside the Oasis. P 6.



Hoo Farm

Ironbridge Gorge will feature the secrets of Queen Victoria's Shropshire this year - a century after the death of the great Queen. Coalbrookdale Museum has the plans for the great Exhibition of 1851. Coalport China Museum will have porcelain from England's most productive china factory. 25 Workshops and traders at Blist's Hill bring back the industry of a century ago. www.ironbridge.org.uk See p 18 and £5 Passport Ticket offer on P 49.



Jodrell Bank's giant Lovell telescope

Jodrell Bank with its giant Lovell telescope dominates the Cheshire Plain, but you can discover its secrets with the fascinating hands-on exhibits covering space technology, satellites and astronomy. Be amazed at the Planetarium show, Picnic sites, stunning Arboretum. Large car park, café and shop. P.22. **Jessops**, two great photographic shops in Chester in St Werburgh St and at Grosvenor Street - and their own Jessops brand is one of the best value 35mm slide films! **Jaguar Cars** - well, what can we say but 'thanks' for the wonderful and imaginative funding of the *Spirit of the Jaguar!* See p.14 and 15.

Knowsley Safari Park - close to the M 57 at J 3 - has the largest herd of African elephants in the country within 500 acres of rolling countryside. Giraffes, Meerkats and Otters - Lion cubs born just before Christmas

2000! Amusement rides, roller coaster and pirate ship. Optional routes allow you to tour the park as many times as you like - and a car friendly route round Monkey Jungle www.knowsley.com See p 11 and free child offer on page 49. **Kodak** - great photographic partners, with their 35mm and APS films on sale in our shops. Great supporters of our photographic competition - and their new 35mm slide films with extra colour saturation are stunning. Recommended!



Knowsley Safari Park

Liverpool Football Club Museum and Tour centre at Anfield celebrates all things Liverpool, past, present and future, including a re-creation of the standing Kop. The stadium Tour offers a chance to visit the dressing room, walk down the tunnel to the sound of the crowd, touch the famous 'this is Anfield' sign and sit in the team dug out. Recently voted best in the North West for *Customer Care* See page 38. **London Zoo** makes any visit to capital worthwhile. A brisk walk from Euston through Regents Park. Chester Zoo Members enjoy reciprocal free admission.



See page 15

Three for the price of Two

when name and address details overleaf are completed
One Guest free with two paying guests

Valid from 7th April - 28th October 2001 excluding Bank Holidays
Check opening dates/times on 01257 452100

Catalyst

See page 13

Free Child Admission to Catalyst

one child per full paying adult when the address details overleaf are completed. (One voucher per adult/child)

Valid to 31st dec 2001 Not to be used with any other offer

ERDDIG

See page 17

Free Child's Entry to Erddig Hall and Gardens

One child (aged 5-17 admitted free when accompanied by an adult paying standard price, when details overleaf are completed

Valid for 2001 season (to 31st Oct 2001)
Not to be used with any other offer

EUREKA!

See page 39

The Museum for Children

One free entry of equivalent value with this voucher with a person paying standard price

Not valid in August or October 2001 Valid to 31st Dec 2001

GUIDE FRIDAY

SAVE £1.50

with this coupon on the Guide Friday open top bus tour of Chester

or £2.00

on the combined Chester Tour and River Cruise. See advertisement, page 21.

Not valid in conjunction with any other offer. Valid until 31 Dec 2001. Only one coupon per ticket. Ref. C.Z.



HACK GREEN SECRET NUCLEAR BUNKER

FREE POT OF NAAFI TEA, COFFEE or ANY SOFT DRINK ON PRODUCTION OF THIS VOUCHER

See page 18

Not to be used with any other offer Valid until 31st Dec 2001

FREE Child's (3-15) Admission to Model Village at Haigh Hall, Wigan

when accompanied by an adult paying full price and when address details on reverse are completed. (One child, one coupon, one adult) (See advertisement on page 19)

Not to be used with any other offer Valid to end of 2001 season

Martin Mere

See page 31

ONE FREE ENTRY of equivalent value with this voucher with a person paying standard price

Valid to 31st Dec 2001



**3 for the price
of 2 offer**
see reverse

Name.....
Address.....
Postcode.....
Data may be stored electronically.
Not to be used with any other offer. CZN

Catalyst **FREE CHILD OFFER**
see reverse

Name.....
Address.....
Postcode.....
Data may be stored electronically.
Not to be used with any other offer. CZN

ERDDIG **FREE CHILD OFFER**
see reverse

Name.....
Address.....
Postcode.....
Data may be stored electronically.
Not to be used with any other offer. CZN

EUREKA! **One free entry of equivalent
value with this voucher with a
person paying standard price**
See offer on reverse

Name.....
Address.....
Postcode.....
Data may be stored electronically.
Not to be used with any other offer. CZN

**GUIDE
FRIDAY**

See offer on Reverse

Name.....
Address.....
Postcode.....
Data may be stored electronically.
Not to be used with any other offer. CZN



**HACK GREEN SECRET
NUCLEAR BUNKER**

CHILDREN HAVE FUN TOO

USE THIS VOUCHER AFTER YOU HAVE COMPLETED THE SPY MOUSE TRAIL CZN

Haigh Hall
Free Child's Admission to Model Village
See offer on reverse

Name.....
Address.....
Postcode.....
Data may be stored electronically.
Not to be used with any other offer. CZN

Martin Mere **ONE FREE
ENTRY**
See offer on reverse

Name.....
Address.....
Postcode.....
Data may be stored electronically.
Not to be used with any other offer. CZN

SAVE MONEY NOW

Martin Mere at Burscough, near Ormskirk is now one of the top sites in the world for migrant Pink Footed Geese, Whooper and Berwick's Swans from the far north. As part of the Wildfowl and Wetlands Trust, founded by the late Sir Peter Scott, visitors can enjoy walking through themed wetlands landscapes. See the extensive collection of rare and exotic ducks, geese, swans, cranes and flamingos - many of which will feed from your hand. Wonderful wetland play area for the children. Guide dogs welcome. See p 31 and offer on page 51. **Marketing Conference** in Tenerife - the third international zoo conference in May - details 01244 650226. **Marwell** - near Winchester - is one of the finest Zoos in the UK - naturally - our members have reciprocal membership visiting rights! **Mauritius** - our favourite Indian Ocean island - **Air Mauritius** - can advise you on the best flights too - see page 27. **Max Spielmann's** unique photo technology visitor centre at Cross Lane, Wallasey (just off the M53 at J1) lets you see 21st Century technology at work, with hi speed processing of films to photos. Coach tours welcome, children free when with an adult. Free photos for visitors. www.maxspielmann.com See p33 and offer on page 53. **McArthur Glen Designer Outlet** at Cheshire Oaks is Europe's largest with over 140 stores full of top brands and leading designer names. Discounts of up to 50% off recommended prices. **Marks and Spencer** are one of the latest arrivals. 500 seater themed foodcourt, parking for 3,500 cars and 50 coaches. Claim your VIP Coupon Book of savings - see p35. **Mersey Ferries** offer wonderful **Heritage Cruises** - a way for all the family to have an unforgettable day and to learn a thing or two about Merseyside's unique maritime heritage. Hourly departures from Pier Head and from Seacombe and Woodside over the water. Travel



Martin Mere



Mersey Ferries

though time as we tell you of Europe's oldest ferry some 850 years old! Learn some startling facts too. See page 30 and offer on p 53. www.merseyferries.co.uk **Merseytravel** are our partners in the special joint rail/bus/zoo entrance ticket that is on sale at all manned Mersyrail stations and runs to Bache Station on the Chester - Liverpool electric line. Get an information leaflet from any manned station or from the great Merseytravel Travel Centre in Queen Square, Liverpool where you can pick up many useful leaflets. Chester Zoo is just one of many attraction accessible by Merseyrail. The Wirral Line runs along the dunes of Mockbeggar Wharf to the silvery Dee Estuary at West Kirby. Elegant Southport, immense beaches and the Squirrel Reserve at Freshfield are on the Northern Line. Albert Dock and the Museums are close to our underground stations and are only a step from the Mersey Ferries to Birkenhead. Buses through the City link to country parks, busy markets and the famous Cavern quarter. See p 3. **Merseytravel line 0151 236 7676, Mobility Shop (North West)** can provide advice and help on all matters of getting around, with new and re-conditioned equipment. No obligation home visits Details on page 23.

Ness Photo Labs at Widnes are one of Cheshire's leading professional photographic processing laboratories and have been the Zoo's colour specialist transparency lab for 14 years. They now have added digital facilities. See p 33. **Ness Gardens** are the University of Liverpool's Botanic Gardens at Burton in the Wirral. One of the loveliest of learning gardens - and well known to all our Botanicals! See page 21. **National Museums and Galleries** on Merseyside have so very much to offer The Merseyside Maritime Museum at Albert Dock, the Liverpool Museum close by having a Millennium refit during the working week, (but very much open at weekends), the Lady Lever Gallery at Port Sunlight, The Conservation Centre, Sudley House and of course - the Walker Art Gallery and Tate Galleries at Albert Dock. www.nmnm.org.uk See page 39. **National Museum of Photography and TV** at Bradford - stunning giant screen films and amazing galleries. Well worth a visit. **National Railway Museum** at York - another wonderful Roman City - they are fellow members of the Association of Leading Visitor Attractions



Bala Lake Railway

Oswestry is a great base for exploring the Welsh Borders - easy to get to, and close to Chester. Shropshire has wonderful small towns and villages, great scenery with rivers lakes and waterfalls, Markets, Castles, myths and legends - but perhaps most of all, an old fashioned hospitality that so much helps visitors to unwind, discover and enjoy. Get the 2001 brochure www.oswestry-welshborders.org.uk See p 41.

GREAT COUPON OFFERS

Plassey Touring Caravan Park and Craft Centre at Eyton near Wrexham has many useful amenities – an indoor swimming pool, 9 hole golf course, craft workshops, garden centre and even a real ale brewery. It's around 30 minutes from Chester. See p.8. The delightful garden village of **Port Sunlight** was named after the famous soap produced there by William Hesketh Lever. The Heritage Centre in the village makes it easy to follow the fascinations of this model village. Group discounts – see p.42. The Lady Lever Art Gallery is one of the jewels of the North West – and is in the good hands of the National Museums and Galleries on Merseyside. Easy to get to – there is a Merseyrail station in the village. **Prontaprint** in Ellesmere Port – run by Roy and Margaret offer a top quality, whilst you wait, colour photocopying service and useful copying, binding and printing services in full colour, spot colour or just black and white! 0151 356 0106



Royal Liver Assurance are one of the financial institutions of Merseyside, proudly working from their great headquarters building – whose clock faces are even larger than those of Big Ben. To find out about their wide range of financial products – see page 48. **Ruthin Castle** in Denbighshire stands in 30 acres of parkland, yet is only 3 minutes walk from the mediaeval town of Ruthin itself. With a speciality of mediaeval banquets, you can recapture the authentic flavour of times past. Quaff wine from pewter goblets, or mead from clay cups, eating your four course meal with the help of a dagger. The Ladies of the Court sing for you, and there is music from the harpist. Keeping good order is the Court Steward – for this is Britain's most authentic mediaeval banquet. www.ruthincastle.co.uk Page 40

Salt Museum at Northwich embraces much of Central Cheshire's history, and with the Lion Salt Works whose restoration continues with great success, shows the importance of our first chemical industry sites. Close to Northwich Town Centre and open six days a week (closed Mondays) See p.42 and offer on page 53. **The Blackpool Sea Life Centre** on the Promenade on the Golden Mile lets you explore the underwater world in comfort and the **National Sea Life Centre** in Birmingham claims to be 'Britain's best aquarium' with a 360 degree underwater tunnel and 55 breathtaking displays. See p.38 and offer on p.53. The skilled tanker drivers from **Shell Direct** – the heating oil company within the Shell organisation are no strangers to the zoo. Their regular deliveries of oil, often straight to the tanks of the Elephant, Monkey, Ape and Rhino quarters and the **Tropical Realm** amongst others make sure that comfortable heat is maintained whatever the weather outside. **We are grateful to them all.** **Southport Flower Show** at Victoria Park is very much part of the August scene – diary note - it is Thursday 16th – Saturday 18th August. Our refitted Zoo Noah's Ark will be there again, letting us meet old and new friends. See p.35. **Stapeley Water Gardens** at Nantwich are three attractions in one. The Palms Tropical Oasis, with lush plants, cascading water and tropical animals at home. The Water Gardens themselves cover all conceivable needs, including fish to stock your garden pool or aquarium and the Angling Centre with everything that the angler – novice or expert needs. www.stapeleywatergardens.com See p.41 and valuable offer on right.



Twycross Zoo

Tatton Park at Knutsford is one of Britain's classic stately homes, with 3,000 acres of parkland, mediaeval ruins, a home farm with rare breeds of animals, wonderful award winning gardens with 50 acres of exotic trees, and a neo classical Mansion. The Tudor Old Hall exists – you are guided through the smoky shadows of the 16th Century. Garden, gift and speciality food shops. It is also host to many special events, Hall, Fireworks Concert – and the Royal Horticultural Society's summer show here – now in its third year is one of the best. Naturally, the Zoo will be represented! See p.43. **The Trafford Centre** – just off the Greater Manchester M 60 Ring Road has some of the top names in the Country – including the first Selfridges outside Oxford St. There is so much to see in shopping and



Trafford Centre

entertainment that you can easily spend all day and the evening there too. First class facilities for visitors with disabilities. See p.7. **3C Imaging** of Duke Street, Liverpool are Zoo suppliers of displays and specialist scanning and printing services, including the incredible Lambda process. Always helpful 0151 708 8600. **Twycross Zoo**, Norton juxta Twycross just off the M 42 has a wonderful setting, two baby elephants sired by our *Chang* and some of the best primate facilities in the country. Read all about its amazing start from two rival petshops whose owners decided to work together, with a great vet, Mary Branker, helping them. *Molly's Zoo* was a wonderful TV series – now get the book. (Borders Bookshop stock it in their TV section) See p.34.

MAX PHOTO PROCESSING
FREE 2ND SET OF PRINTS
ON 35MM OR APS FILM
APS size prints mixed
35mm colour - 7x5/8x8 prints

See page 33

Offer available to retail or mail order customers.
For more information please contact Customer Services
Helpline 0151 639 8941

Conditions: Only one film per voucher. 2nd set only available on selected sizes.
35mm service time 24hr/APS service time 48hr - Service times are subject to change. No monetary value to this voucher. Offer expires 31st December 2001

See page 30

MERSEY FERRIES

ONE CHILD FREE WITH EVERY ADULT PAYING FULL FARE

when address details overleaf are completed
Valid until 31st Dec 2001 on Heritage Cruises only.

SALT MUSEUM ONE FREE ENTRY

See page 42

of equivalent value with this voucher with a person paying standard price

Valid to 31st Dec 2001

Salt Museum is closed on Mondays except in August and on Bank Holidays

Stapeley Water Gardens - The Palms See page 41

Free Child with every full paying adult

Up to 2 adults/2 children per voucher, when address details overleaf completed

Valid to 30th July 2001

SEALIFE Voucher worth up to £10 See page 38

Save £2 per person on admission

for up to five people, when one name & address completed overleaf

Valid at Birmingham and Blackpool only until 31st Dec 2001. Only one voucher per transaction.

See page 44

Wigan Pier

Special Family Offer £12.50

admits 2 adults and 3 concessions to every attraction on site

Normal Price £19.95

Valid until 31.12.01. Not to be used in conjunction with any other offer. Please note Wigan Pier is closed on Fridays.



Save £5

on Child or OAP

when adult pays standard price

this voucher saves £5 on one child (3-15) or OAP admission when accompanied by an adult paying standard price when address details overleaf completed. Valid to 31st Dec 2001. Only one admission per voucher.



Save £5

on Child or OAP

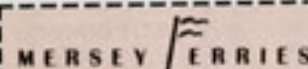
when adult pays standard price

this voucher saves £5 on one child (3-15) or OAP admission when accompanied by an adult paying standard price when address details overleaf completed. Valid to 31st Dec 2001. Only one admission per voucher.



**PHOTO PROCESSING
FREE 2ND SET OF PRINTS
ON 35MM OR APS FILM**
See reverse for details

Name
Address
Postcode
Data may be stored electronically.
Not to be used with any other offer. CZN



**FREE CHILD ON
HERITAGE CRUISES**
See offer on reverse

Name
Address
Postcode
Data may be stored electronically.
Not to be used with any other offer. CZN



See reverse for details

Name
Address
Postcode
Data may be stored electronically.
Not to be used with any other offer. CZN

Stapeley Water Gardens
Free Child admission to the Palms
See offer on reverse

Name
Address
Postcode
Data may be stored electronically.
Not to be used with any other offer. CZN

SEALIFE Save £2 per person
on admission
See offer on reverse

Name
Address
Postcode
Data may be stored electronically.
Not to be used with any other offer. CZN

Wigan Pier
Family Ticket Offer £12.50
See offer on reverse

Name
Address
Postcode
Data may be stored electronically.
Not to be used with any other offer. CZN

CHESTER ZOO Save £5 on child
or OAP See offer on reverse

Name
Address
Postcode
Data may be stored electronically. Not to be used with any other offer

CHESTER Save £5 on child
or OAP See offer on reverse

Name
Address
Postcode
Data may be stored electronically. Not to be used with any other offer

GREAT COUPON OFFERS

Vale Royal of England now of Cheshire's Boroughs with so much to offer the visitor - Nantwich - Venice-like with its canals, the Anderton Boat Lift almost ready to re-open, Delamere Forest for great walks, and a Tourist Association to encourage initiative and enterprise. See the Vale Royal stand at the Cheshire Show and at Royal Horticultural Society Show at Tatton. See page 42.

Warner Village Cinemas at the Coliseum at Cheshire Oaks, with the mind blowing iWERKS Extreme screen. It is an extraordinary way to reach another dimension. www.warnervillage.co.uk Birkenhead too - not iWERKS, but great films nevertheless with the very latest releases. See p 25. Weddings Yes - Chester Zoo is now licensed for Civil weddings - Jane Lawson will advise. 01244 650209. **Welshpool and Llanfair Railway** - a narrow gauge steam survivor with locomotives from Manchester, Finland, Sierra Leone and Austria - with a track set in rolling farmland. You start on the edge of the historic Welsh market town of Welshpool - and the train battles up the steep Golfa Bank. Unique open balconied Austrian coaches let you experience the wonderful landscape. See hawks, deer and maybe otters too. Running alongside the River Banwy to Llanfair Caereinion, the terminus has an Edwardian Style Tea Room and friendly staff who love to answer your questions. One of the Great Little Trains of Wales. Children travel for just £1. www.wllr.org.uk See p 40. **Whipsnade Wild Animal Park** on the edge of the Chilterns - the biggest wildlife experience in the UK in area terms. Quite outstanding paddocks, railway and much more. So big - you can take your car in! Naturally, Chester members share reciprocal free visiting rights. The award winning **Wigan Pier Experience** is set in an eight and a half acres site alongside the redeveloped Leeds - Liverpool Canal. Experience **The Way We Were Heritage Centre**, with its Victorian School Room, the Palace of Varieties Music Hall or follow a promenade play. Afterwards, hop the water bus to see the £2.2 Million **Opie's Museum of Memories**, collected by the celebrated authors. Page 44 and offer on p 53. **Windmill Farm** at Burscough - half a mile beyond Martin Mere - has baby animals to view and touch, set in a sympathetic farm area with space for the animals. Red Cat Lane See page 31. **Wirral** - so much to see and do in the Peninsula. New Brighton Sea Front, The dunes and walks, Hilbre Island, shopping in Birkenhead, the wonderful **Wirral Show** in July, Balloons in Birkenhead Park, Seacombe Aquarium and more. See page 45. **Welsh Mountain Zoo** at Colwyn Bay - well worth the journey up the hill. **The Wonderful World of Glass** - one of the region's newest attractions and one which is certain to win awards. St Helens, of course, on Chalon Way - you must see demonstrations of glass blowing! Open 10 am 5 pm daily. Multimedia show, museum galleries, café and shop. www.worldofglass.com Page 37.



Wigan Pier

Xmas Grotto - undoubtedly one of the best is the branch at Chester Zoo. Watch for details in the autumn of our special Christmas arrangements, including Zoo by Night! 01244 650209 for details.

Y not adopt an animal? Maureen, Pauline or Sue will be pleased to help 01244 650203.



Zoos - Chester, Blackpool, Colwyn Bay are the nearest, with Twycross, Bristol, Whipsnade, London, Colchester, Marwell and Paignton in reach 'southbound' Head North for South Lakes Wild Animal Park (home to Bentley the young giraffe of a couple of years ago) Edinburgh and Glasgow. Over the water to Belfast, Dublin and Fota.



The Laburnum Arch at Bodnant Garden, North Wales - see opposite



WONDERFUL WALES

visit **Greenfield Valley**
HOLYWELL
NORTH WALES

COUNTRY PARK

MUSEUM

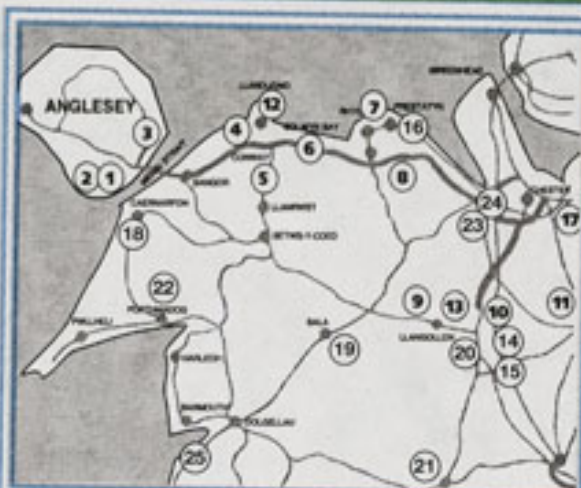
&

FARM



Open 1st April -31st Oct. daily 10am -5pm
WWW.marketsite.co.uk/greenfld/

Greenfield, Holywell: (01352) 714172



- | | |
|-------------------------------------|--|
| 1. Anglesey Sea Zoo | 19. Bala Lake Railway |
| 2. Foel Farm Park | 20. Plassey Caravan Park |
| 3. Pili Palas | 21. Welshpool & Llanfair Railway |
| 4. Conwy and Conwy Butterfly Jungle | 22. Ffestiniog Railway |
| 5. Bodnant Gardens | 23. Greenacres Farm Park |
| 6. Welsh Mountain Zoo | 24. Deeside Leisure Centre |
| 7. Rhyl Aquarium | 25. Fairbourne Railway |
| | 8. Bodelwyddan Castle |
| | 9. Ruthin Craft Centre |
| | 10. Loggerheads Country Park |
| | 11. Bersham Ironworks |
| | 12. Alice in Wonderland Visitor Centre |
| | 13. Llangollen Attractions |
| | 14. Erddig & Farmworld |
| | 15. Chirk |
| | 16. Afonwen and Greenfield Valley |
| | 17. Chester Zoo |
| | 18. Welsh Highland Railway |

It's just down the A55 (or other convenient routes), and it's a whole new country.

Near to Chester is the Afon Wen Trading Estate (see page 2) at Caerwys, and Greenfield Valley is just a little further westwards. Go west again for some favourite days. Bodnant Gardens are amongst the best of the National Trust's estates, Conwy is close - with a ring wall like Chester. The Welsh Mountain Zoo at Colwyn Bay has great views, lots of animals and is a great picnic site. For the railway enthusiasts - Caernarfon for the reborn Welsh Highland (and an amazing Castle), Portmadoc for the Ffestiniog; Bala Lake has its steam railway and to the south - the Welshpool & Llanfair is a railway quite unlike any other (p 40). Tal-y-lyn, Vale of Reidol - at Aberystwyth, and the gallant Fairbourne need your support too! Wrexham - good shopping - easily reached from Chester. Enjoy both Farmworld (p44) and Erddig (page 17, and offer on page 50) - a neat double act? Plassey at Eyton is a useful place to stay, with or without a caravan - see p 8. Get the local news from Marcher FM too. Mediaeval Banquets - Ruthin, naturally (see page 40), and as a centres for exploration, Oswestry (p 41) and Whitchurch are good Border bases - and safely in England! The Centre for Alternative Technology at Machynlleth - and the Corris Railway Museum nearby are amazing experiences. Llangollen has many attractions, including the canal and wonderful aqueduct, and standard gauge steam too! Llandudno now houses the amazing collection of Anglesey Bird World (p 40) within a hands on farm environment at Bodafon Farm Park at the Little Orme end of the Promenade. The Rabbit Hole has the Alice in Wonderland exhibition in Trinity Square. Anglesey Sea Zoo (page 40 and offer on page 49) on the island itself, is a great day out. Couple this with Foel Farm Park or Pili Palas Butterfly Farm? Zoo Juniors rate it one of the best of all and there is so much space too! There are always lots of leaflets on Welsh attractions at the M56 Chester Service Area, with invaluable Borderlands booklets. Deeside Leisure Centre, with the Ice Rink is a great fun opportunity, and so easy to get to!

Choose well - Choose Wales

The National Trust



Bodnant Garden

80 acres of magnificent garden in the beautiful Conwy Valley.

- ▶ **March/April:** Magnolias and Camellias.
- ▶ **April/May:** Rhododendrons and Azaleas.
- ▶ **Late May:** The famous Laburnum Arch.
- ▶ **June/Sept:** Roses, Water Lilies, Hydrangeas and Herbaceous borders
- ▶ **October:** Superb autumn colours.

Open daily 17th March to 4th November
10am to 5.00pm

Twice voted Britain's favourite garden.
A Premier Garden of Wales.
A Wales Tourist Board Star Attraction.
A member of Ten Top Attractions.

Large car park and Refreshment Pavilion.
Plant Centre and Gift Shop (not NT).

Eight miles south of Llandudno and Colwyn Bay, just off A470.
Also signposted from the A55.

TAL-Y-CAFN, NR COLWYN BAY, NORTH WALES
Tel: (01492) 650460 Fax: (01492) 650448



Enjoy a nine mile return trip by narrow gauge steam through the Snowdonia National Park alongside Bala Lake (Llyn Tegid). Services begin at Easter until early October.

Only one hour's run from Chester - we are off the A494 Bala-Dolgellau Road.

Tel 01678 540 666

One of the Great Little Trains of Wales

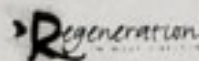
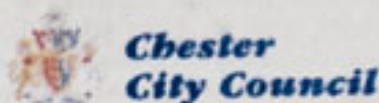
A barrier-free City!

CHESTER is a city full of interest and history; famous for the Rows, City Walls, Roman and Civil War history. Chester is also one of the most attractive and popular shopping areas in the country.

As part of our aim to make Chester a barrier-free city we have opened a Shopmobility scheme. Based conveniently close to the main shopping areas and the historic centre, the facility offers easy to use electric scooters and other mobility aids together with orange badge parking.



Brought to fruition by a partnership involving:



Telephone
01244 312626

Chester Zoo News

The promotional news magazine, published by Chester Zoo in the interests of the best tourism information in the region. 14th year of publication, Audited 75,000 print run. Edited and designed by Chris Vere, with access advice from Mike Elkerton, Zoo Volunteer Disability Advisor. Opinions expressed are those of the Editor and contributors, and not necessarily, those of Chester Zoo. Equally, acceptance of advertisements does not imply endorsement by the Zoo. Origination and print by Chronicle Newspapers, Printed in Chester. Thank you to all contributors, advertisers and distributors. Distributors include North West Tourist Board, Yorkshire Tourist Board, LDS and North Wales Tourism. In season, further copies available via the Zoo - 01244 650226. When sold, all receipts support Chester Zoo's animal welfare projects. This magazine may be freely copied or quoted without fee or further permission, and may be used as a study aid for Travel and Tourism projects. Registered Charity No. 306077. FAX 01244 371273. TEL 01244 380280 e-mail: marketing@chesterzoo.co.uk www.chesterzoo.org © Chester Zoo 2001

Web Site
www.chesterzoo.org

e-mail
marketing@chesterzoo.co.uk

