



*By Courtesy of J. Whitworth*

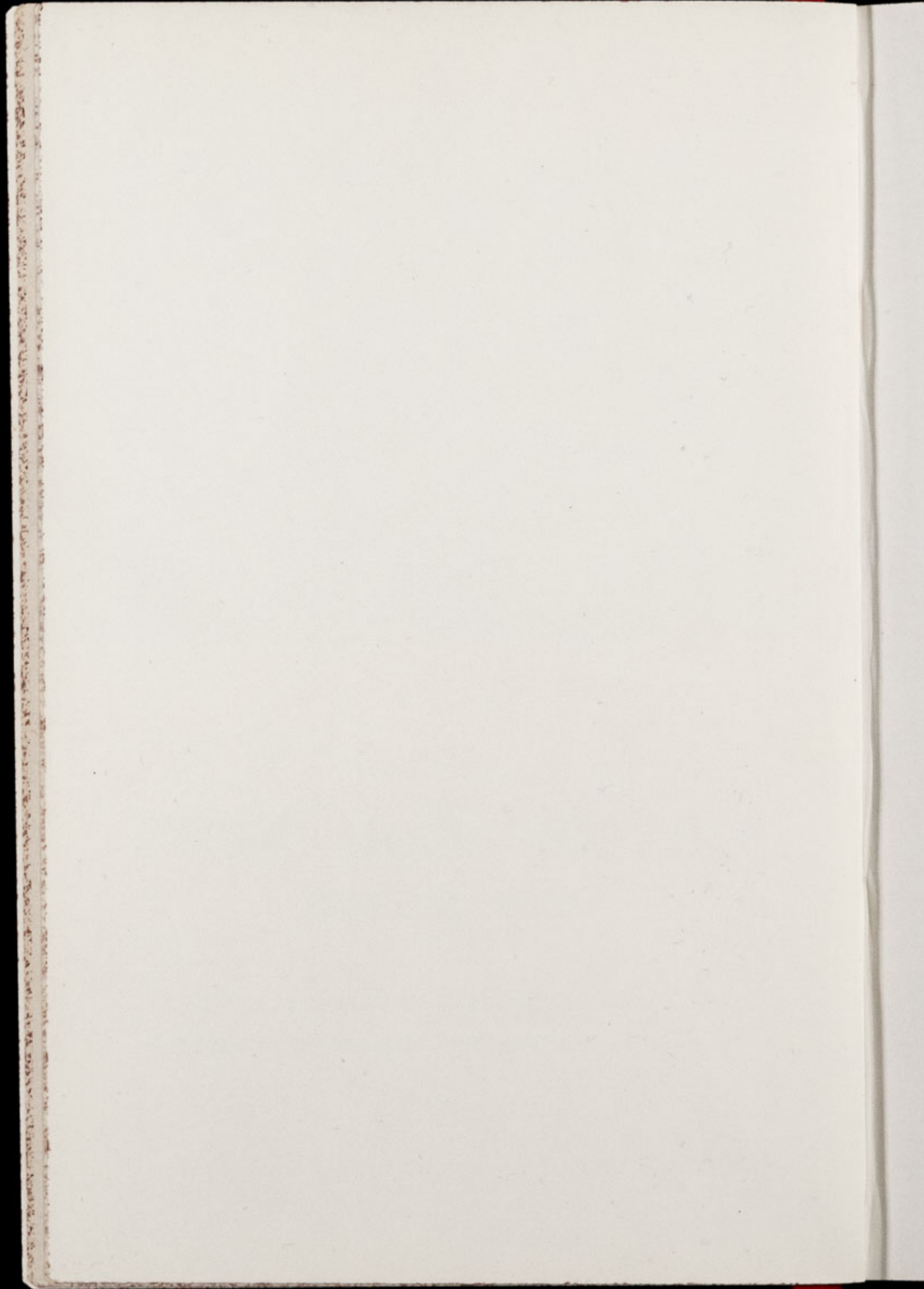
# **Chester Zoo News**

## **AND GUIDE**

**THE NORTH OF ENGLAND ZOOLOGICAL SOCIETY**  
**ZOOLOGICAL GARDENS, UPTON - BY - CHESTER**

February 1973

Price 6p



# The North of England Zoological Society

ZOOLOGICAL GARDENS, UPTON-BY-CHESTER

## COUNCIL

PROF. J. O. L. KING, Ph.D., M.V.Sc., B.Sc.(AGRIC.), F.R.C.V.S.(Chairman)

MISS G. M. RUSSELL-ALLEN, O.B.E.

HER GRACE SALLY DUCHESS OF WESTMINSTER

THE RT. HON. LORD TOLLEMACHE, M.C., D.L.

A. C. JOHNSON

H. F. PARKER

J. N. WILSON

J. A. KILPATRICK, M.B., Ch.B., F.R.C.S.E.

A. E. SMITH

F. MOSFORD

H. D. COOPER, F.I.M., F.I.F.F., A.I.B.

A. K. MCGHIE, A.I.B.

G. R. PRYOR, C.Eng., Hon.M.I.Prod.E., F.B.I.M.

E. SORBY, M.A. (OXON).

A. J. BLAND, Dipl.Arch., R.I.B.A.

G. S. MOTTERSHEAD, O.B.E., M.Sc., DIRECTOR-SECRETARY

## CONTENTS:

<i>page two</i>	Arrivals and Births. Aquarium News.
<i>page four</i>	Marine Toads
<i>page five</i>	Malayan Tapir Still Birth.
<i>page eight/nine</i>	Zoo Plan.
<i>page ten</i>	Gardening News.
<i>page eleven</i>	Report for 1972.
<i>page twelve</i>	Mammals.
<i>page fourteen</i>	Birds.
<i>page sixteen</i>	Reptiles. Subscription Forms.

## ILLUSTRATIONS:

<i>page seven</i>	Malayan Tapirs.
<i>page thirteen</i>	Young Coatis.

COVER: Marine Toad (*Bufo marinus*); see page four.

---

ANNUAL SUBSCRIPTION — NINETY-FIVE PENCE POSTAGE PAID

TELEPHONE :: CHESTER 20106/7/8

### ARRIVALS AND BIRTHS

The birth of the following mammals during the past month heralds the start of what we hope will be another good breeding year.

- 1 De Brazza Monkey (*Cercopithecus neglectus*)
- 1 Beisa Oryx (*Oryx gazella beisa*)
- 1 Highland calf (*Bos taurus*)
- 1 Red Lechwe (*Kobus leche*).

The baby De Brazza Monkey is believed to be a female and may be seen with its mother, 'Brenda,' in the Monkey House. The rest of the De Brazza group comprises an adult male and female, two females born in 1970 and a male bred in 1971.

The Beisa Oryx calf has not yet been sexed and is not venturing far from the indoor quarters. It is accommodated in enclosure No. 94 with its parents and the young male Beisa Oryx born last year. In fact the latest calf is only the second to be produced by this particular adult pair.

The young Red Lechwe can be seen in enclosure No. 76 where the herd is now twenty-one strong.

There is just one new arrival, a male Crab-eating Macaque (*Macaca fascicularis*) which is living in the Monkey House. The only other representative of this South East Asian species in the collection is a female which, regular visitors will recall, has shared her enclosure for several years with a Siamang. This unlikely friendship began during their journey to England from Sumatra in the summer of 1969 and the Siamang and the Crab-eating Macaque have proved compatible ever since. The new specimen has not been introduced into their enclosure.

### AQUARIUM NEWS

From the Aquarium we have news of two hatchings. In the last issue of the magazine we mentioned that at least one of the newly

acquired Seahorses (*Hippocampus brevirostris*) appeared to be carrying eggs in its pouch. Since then two broods have been hatched. The young were transferred to a nursery tank where minute food in the form of newly hatched brine shrimp was provided but neither brood has been reared, though some individuals lived for almost two weeks. Unfortunately this is by no means uncommon as the rearing of baby Seahorses is extremely difficult. The principal reason is feeding, as they will take neither fresh water nor dead food.

As explained last month, it is the male Seahorse which bears the responsibility of hatching the eggs, after the female has deposited them in his abdominal pouch. At first it was thought that we had acquired four males and three females but as pouches are developing on another two specimens, it is obvious that the ratio is six to one respectively.

There is better news of the hatching of the Common Garfishes (*Xenotodon cancila*). The parent fishes have been spawning since September and the fry has hatched but not survived. More recent broods have lasted longer than earlier ones and with the latest brood we think that we have overcome the critical phase. From thirteen eggs which hatched, six young Common Garfishes are, at the time of writing, six weeks old. At this stage they are just a little shorter than were their parents when they arrived at the Aquarium. Initially the fry were fed newly hatched Paradise Fishes but now they have progressed to taking very young Guppies.

We thought readers would be amused to learn of the re-discovery of a fish in the Aquarium. In last month's issue we reported that one of six young Natterer's Piranhas (*Rooseveltiella nattereri*) had died. The fish could not be seen in the tank and, while no body was recovered, it was assumed that the other five specimens had finished off their companion in typical Piranha fashion. Now, weeks later, the sixth Piranha has re-appeared, even though it does look rather ragged. The Aquarium Keeper had searched the tank thoroughly when it went missing, lifting stones and moving vegetation, and he admits he is completely baffled!

### MARINE TOADS

There are six Giant or Marine Toads (*Bufo marinus*) living in the Reptile Section, the eldest of which is shown in the photograph on the cover. This specimen was acquired in October 1959 when it was barely an inch long, which means that its present age is a little over  $13\frac{1}{4}$  years. It would be interesting to learn if anyone else has kept Marine Toads for a longer period. Of the other five specimens, three arrived in August 1963 and two in July 1964.

Despite its popular and scientific names, this is not a marine species. It is indigenous to Central and most of South America where it lives in long grass or other vegetation, the type of habitat in which one might expect toads to live. The misnomer seems to have arisen from the fact that the first Marine Toad recorded happened to be near the sea.

At the Zoo the healthy appetites of the Marine Toads are satisfied with a weekly feed of young rats and mice. In the wild state, insects, small amphibians, reptiles and mammals are all eaten. The colour of the Marine Toad is yellow with brown mottlings and a fully grown male is rarely less than five inches long. The female is larger again and may easily weigh over 1 lb. She lays a prolific number of eggs which hatch into tadpoles before emerging onto dry land as fully developed toads.

A potential predator of the Marine Toad may soon have second thoughts about its choice of meal, as the amphibian manufactures a fairly lethal and evil-tasting poison. This is exuded as a milky substance through warts on the Toad's skin and is produced in glands on either side of the head. When it wishes to intimidate an enemy the Marine Toad blows up its body with air and it may also do this if it has been swallowed, thus choking the predator.

Some years ago attention was focussed on one particular item on the Marine Toad's menu—the Cane Beetle. Where sugar cane is cultivated this beetle makes itself a nuisance by attacking the plant. With the idea that they would eliminate the Cane Beetles, these large toads were introduced into areas such as the East Indies and north eastern Australia. Sadly the programme for the eradication of the Cane Beetles went awry but the Marine Toads have reached such numbers, especially in Australia, as to cause concern, mainly because of their detrimental effect on the native fauna, in the roles of both predators and prey.

### MALAYAN TAPIR STILL BIRTH

Sometime during the evening of Sunday, 14th, and early morning of Monday, 15th January, a still-born Malayan Tapir (*Tapirus indicus*) was produced. Its discovery came as a complete surprise to Zoo staff as no one had suspected that the female was pregnant. The birth of a Malayan Tapir in captivity is still sufficiently rare to cause excitement and this would have been the first of this species bred at Chester Zoo. After a history of illness, the father had died on the 30th September last year, so the still-birth was a double disappointment. However it was both interesting and encouraging to learn that the parents had mated successfully after being in the collection for over ten years. They arrived together as young animals on the 19th April, 1961 and for most of this time were accommodated in the Pachyderm House. The photograph on page seven was taken a year or so ago.

The baby was a male and estimated to be only a few weeks premature. It was fully developed, measuring about two feet from nose to tail and weighing a little less than 20 lbs. Like all young Tapirs, its body was black with white spots on the head and limbs and longitudinal stripes along the trunk.

Most authorities agree that the gestation period for the Tapir is between 390 and 400 days, or about thirteen months, and there is rarely more than one offspring at a time. In the Malayan Tapir the white colouration on the hind quarters starts to appear when the baby is about ten weeks old and by five months of age most of the stripes and spots have disappeared. Females are thought to reach sexual maturity at three to four years old and subsequently to come into season every two months for at least two days.

The home of the Malayan Tapir is in Burma, Thailand, the Malay Peninsula and Sumatra. It is a species which is suffering a decline in numbers, mainly as a result of the clearing of its tropical forest habitat. The other three species of Tapirs alive today are all found in the New World. The South American Tapir (*Tapirus terrestris*) is also exhibited at the Zoo and has been bred here on several occasions. The Central American (*Tapirus bairdi*) and Mountain Tapirs (*Tapirus pinchaque*) are both struggling for survival and are listed in the I.U.C.N.'s Red Data Book.

As might be deduced from the distance separating the Asiatic from the American forms, the ancestors of the present Tapirs were widely distributed and numerous fossils pertaining to this group have been uncovered. The four species of Tapirs are classified in the order of odd-toed ungulates which includes the Rhinoceroses and the Horse family. In actual fact, only their hind feet which have three toes qualify in this category, as the front feet bear four toes.

Though the markings of the Malayan Tapir seem anything but inconspicuous, in the shadowy world of the forest the large patches of black and white break up the shape of the animal and thus serve as excellent camouflage. Its chief enemies are the large cats and in many areas, man who hunts the Tapir both for food and for leather. The Tapir has small eyes and a poor eyesight but its hearing

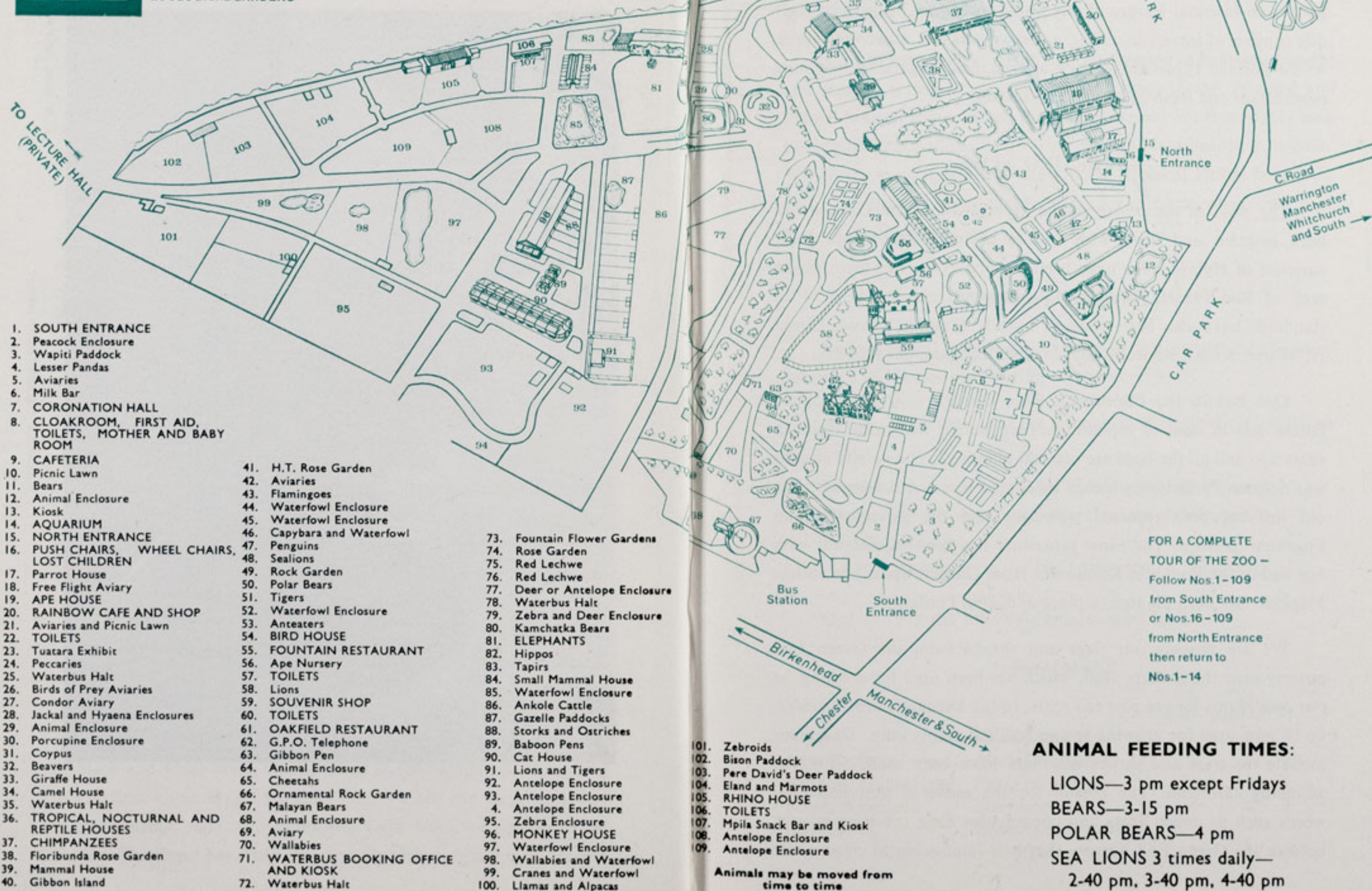


MALAYAN TAPIRS (*Tapirus indicus*)

K. W. Green, A.R.P.S.

# CHESTER ZOO

THE NORTH OF ENGLAND  
ZOOLOGICAL SOCIETY  
ZOOLOGICAL GARDENS



1. SOUTH ENTRANCE
2. Peacock Enclosure
3. Wapiti Paddock
4. Lesser Pandas
5. Aviaries
6. Milk Bar
7. CORONATION HALL
8. CLOAKROOM, FIRST AID, TOILETS, MOTHER AND BABY ROOM

9. CAFETERIA
10. Picnic Lawn
11. Bears
12. Animal Enclosure
13. Kiosk
14. AQUARIUM
15. NORTH ENTRANCE
16. PUSH CHAIRS, WHEEL CHAIRS, LOST CHILDREN
17. Parrot House
18. Free Flight Aviary
19. APE HOUSE
20. RAINBOW CAFE AND SHOP
21. Aviaries and Picnic Lawn
22. TOILETS
23. Tuatara Exhibit
24. Peccaries
25. Waterbus Halt
26. Birds of Prey Aviaries
27. Condor Aviary
28. Jackal and Hyaena Enclosures
29. Animal Enclosure
30. Porcupine Enclosure
31. Coypus
32. Beavers
33. Giraffe House
34. Camel House
35. Waterbus Halt
36. TROPICAL, NOCTURNAL AND REPTILE HOUSES
37. CHIMPANZEES
38. Floribunda Rose Garden
39. Mammal House
40. Gibbon Island

41. H.T. Rose Garden
42. Aviaries
43. Flamingoes
44. Waterfowl Enclosure
45. Waterfowl Enclosure
46. Capybara and Waterfowl
47. Penguins
48. Sealions
49. Rock Garden
50. Polar Bears
51. Tigers
52. Waterfowl Enclosure
53. Anteaters
54. BIRD HOUSE
55. FOUNTAIN RESTAURANT
56. Ape Nursery
57. TOILETS
58. Lions
59. SOUVENIR SHOP
60. TOILETS
61. OAKFIELD RESTAURANT
62. G.P.O. Telephone
63. Gibbon Pen
64. Animal Enclosure
65. Cheetahs
66. Ornamental Rock Garden
67. Malayan Bears
68. Animal Enclosure
69. Aviary
70. Wallabies
71. WATERBUS BOOKING OFFICE AND KIOSK
72. Waterbus Halt

73. Fountain Flower Gardens
74. Rose Garden
75. Red Lechwe
76. Red Lechwe
77. Deer or Antelope Enclosure
78. Waterbus Halt
79. Zebra and Deer Enclosure
80. Kamchatka Bears
81. ELEPHANTS
82. Hippos
83. Tapirs
84. Small Mammal House
85. Waterfowl Enclosure
86. Ankole Cattle
87. Gazelle Paddocks
88. Storks and Ostriches
89. Baboon Pens
90. Cat House
91. Lions and Tigers
92. Antelope Enclosure
93. Antelope Enclosure
94. Antelope Enclosure
95. Zebra Enclosure
96. MONKEY HOUSE
97. Waterfowl Enclosure
98. Wallabies and Waterfowl
99. Cranes and Waterfowl
100. Llamas and Alpacas

101. Zebroids
102. Bison Paddock
103. Pere David's Deer Paddock
104. Eland and Marmots
105. RHINO HOUSE
106. TOILETS
107. Mpila Snack Bar and Kiosk
108. Antelope Enclosure
109. Antelope Enclosure

Animals may be moved from time to time

FOR A COMPLETE TOUR OF THE ZOO - Follow Nos.1-109 from South Entrance or Nos.16-109 from North Entrance then return to Nos.1-14

## ANIMAL FEEDING TIMES:

LIONS—3 pm except Fridays  
BEARS—3-15 pm  
POLAR BEARS—4 pm  
SEA LIONS 3 times daily—  
2-40 pm, 3-40 pm, 4-40 pm

is good. It has an acute sense of smell also, which is aided by a flexible trunk-like snout. These animals take readily to water and a pool is an essential feature of any Tapir enclosure. In the wild their diet consists of leaves, branches, grasses, fruits and other vegetation. At the Zoo the Tapirs are fed hay, lucerne, fruit, vegetables, yoghurt, concentrate and fresh grass when in season.

### GARDENING NEWS

The pool in the centre of the Hybrid Tea Rose Garden has been emptied and filled with soil to accommodate roses. Four varieties of Hybrid Teas have been planted. They are three dozen each of Red Planet, Whisky Mac, Blessings and Akebone. Five standards have also been planted, namely Fragrant Cloud, Ernest H. Morse, King's Ransom, Mr. Lincoln and Summer Holiday.

One bed in the Floribunda Rose Garden near the Tropical House was in need of replanting. This garden was made eighteen years ago and all the beds are original plantings. The variety cleared was Salmon Perfection which is no longer listed in catalogues. The old soil has been replaced with new and the variety Franklin Engelman planted. The same procedure has been carried out with one bed in the Fountain Restaurant Rose Garden where the variety Megiddo has been planted in place of Karen Poulsen.

We are moving our trees and shrubs from the Green End nursery near the Lecture Hall, which has been used for growing on our own plants for the past ten years, to the Demage Farm Nursery, up to now used for growing spring bedding plants only. To accommodate the trees and shrubs new flats have been made from the adjoining farmland. The reason for the move is that perennial weeds such as couch grass and convolvulus have taken so great a hold in the Green End nursery that it is impossible to clean while

planted. We shall now clean this land and plant with willows and poplars for cutting during later years. The branches are always in great demand for animal feeding.

The annual pruning, restaking, top dressing of beds and troughs and general spring clean is now taking place in the Tropical and animal houses. It is essential that this is carried out thoroughly each year to maintain all plants growing well and in a healthy condition. We do try to complete this work in the Tropical House before the end of February so as not to disturb the birds when they start nesting at about this time.

### REPORT FOR 1972

Following our annual stocktaking we are publishing the usual summary of species bred during the previous year.

At 31st December, 1972 the animals in the collection (excluding fish) were:

Mammals	841 specimens of 153 species
Birds	1,644 specimens of 261 species
Reptiles and Amphibians	184 specimens of 89 species

During 1972 the following species were bred :

#### MAMMALS

		No.	No.	Sex	
		Born	Reared	M.	F.
Alpaca	<i>Lama pacos</i>	2	1	1	0
Ape, Barbary	<i>Macaca sylvana</i>	1	1	1	0
Baboon, Hamadryas	<i>Papio hamadryas</i>	1	1	0	1
Bison, American	<i>Bos bison</i>	4	4	3	1
Blesbok	<i>Damaliscus dorcas</i> <i>phillipsi</i>	2	1	0	1

Mammals—(continued)		No. Born	No. Reared	Sex	
				M.	F.
Bushbaby, Senegal	<i>Galago senegalensis</i>	1	1	0	1
Cattle, Ankole	<i>Bos taurus</i>	2	1	1	0
Cattle, Highland	<i>Bos taurus</i>	3	3	0	3
Chimpanzee	<i>Pan troglodytes</i>	2	1	0	1
Coati	<i>Nasua nasua</i>	4	4		
Coypu	<i>Myocastor coypus</i>	6	6		
Deer, Fallow	<i>Dama dama</i>	5	4	2	2
Deer, Père David	<i>Elaphurus davidianus</i>	3	2	1	1
Eland	<i>Taurotragus oryx</i>	1	—		
Gazelle, Arabian	<i>Gazella arabica</i>	3	3	1	2
Gerbils	<i>Various species</i>	146	146		
Giraffe	<i>Giraffa camelopardalis</i>	1	—		
Goat, Bagot	<i>Capra hircus</i>	2	1	0	1
Gnu, White-bearded	<i>Connochaetes taurinus</i> <i>albojubatus</i>	3	2	0	2
Hippo, Common	<i>Hippopotamus amphibius</i>	1	1	1	0
Kudu, Greater	<i>Tragelaphus strepsiceros</i>	1	1	0	1
Lechwe, Red	<i>Kobus leche</i>	7	6		
Lemmings, Steppe	<i>Lagurus lagurus</i>	3	1		
Leopard, Amur	<i>Panthera pardus</i> <i>orientalis</i>	2	—		
Leopard, Common	<i>Panthera pardus</i>	2	—		
Lion	<i>Panthera leo</i>	6	4	3	1
Llama	<i>Lama glama</i>	1	1	1	0
Mangabey, Sooty	<i>Cercocebus torquatus</i> <i>atys</i>	2	2	0	2
Monkey, White-faced Capuchin	<i>Cebus albifrons</i>	2	2	2	0
Monkey, Mona	<i>Cercopithecus mona</i>	2	1	1	0
Monkey, Vervet	<i>Cercopithecus</i> <i>pygerythrus</i>	1	1	1	0
Mouse, Spiny	<i>Acomys cahirinus</i>	79	79		
Nilgai	<i>Boselaphus tragocamelus</i>	2	1	1	0
Oryx, Beisa	<i>Oryx gazella beisa</i>	1	1	1	0



YOUNG COATIS (*Nasua nasua*)

K. W. Green, A.R.P.S.

Mammals—(continued)		No. Born	No. Reared	Sex M. F.	
Otter, Oriental					
Small-clawed	<i>Amblonyx cinerea</i>	1	—		
Prairie Marmot	<i>Cynomys ludovicianus</i>		42		
Puma	<i>Felis concolor</i>	5	4	1	3
Rat, Nile	<i>Arvicanthis niloticus</i>	111	111		
Sheep, Soay	<i>Ovis aries</i>	6	5	3	2
Squirrel, Japanese					
Ground	<i>Eutamias sibiricus</i>	4	4		
Tiger	<i>Panthera tigris</i>	2	—		
Viscacha, Plains	<i>Lagostomus maximus</i>	5	5		
Wallaby, Bennett's	<i>Wallabia rufogrisea</i>	18	18		
Wallaby, Red-bellied	<i>Thylogale billardierii</i>	1	1	1	0
Wapiti	<i>Cervus canadensis</i>	4	3	0	3

BIRDS

		No. Reared
Avadavat	<i>Amandava amandava</i>	2
Budgerigar	<i>Melopsittacus undulatus</i>	123
*Bunting, Red-headed	<i>Emberiza bruniceps</i>	2
Bunting, Yellow-breasted	<i>Emberiza aureola</i>	3
Cardinal, Virginian	<i>Richmondea cardinalis</i>	1
Cockatiel	<i>Nymphicus hollandicus</i>	70
Conure, Nanday	<i>Nandayus nanday</i>	3
Cordon Bleu	<i>Uraeginthius bengalus</i>	5
Crake, Rufous-sided	<i>Laterallus melanophaius</i>	1
Dove, Diamond	<i>Geopelia cuneata</i>	4
Finch, Bengalese	<i>Louchura striata</i>	3
Finch, Green	<i>Chloris chloris</i>	12
Finch, Zebra	<i>Taeniopygia castanotis</i>	2
Geese, Ashy-headed	<i>Chloephaga poliocephala</i>	2
Geese, Bar-headed	<i>Anser indicus</i>	4
Geese, Domestic		3
Geese, Grey-lag	<i>Anser anser</i>	3

<i>Birds—(continued)</i>		<i>No. Reared</i>
Geese, Lesser Snow	<i>Anser c. coerulescens</i>	7
Grosbeak, Yellow	<i>Pheuticus chrysopeplus</i>	1
Java Sparrow	<i>Padda oryzivora</i>	7
Lorikeet, Louisiade	<i>Trichoglossus haematod aberrans</i>	2
Lovebird, Fischer's	<i>Agapornis fischeri</i>	8
Mynah, Bank	<i>Acridotheres ginginianus</i>	4
Mynah, Hill	<i>Gracula religiosa</i>	1
*Mynah, Jungle	<i>Aethiopsar fuscus</i>	3
Mynah, Rothschild's	<i>Leucopsar rothschildi</i>	1
Owl, Spotted Eagle	<i>Bubo africanus</i>	1
Parrakeet, Barraband	<i>Polytelis swainsoni</i>	2
Parrakeet, Crimson-winged	<i>Aprosmictus erythropterus</i>	2
Parrakeet, Derbyan	<i>Psittacula derbyana</i>	1
Parrakeet, Quaker	<i>Myiopsitta monachus</i>	5
Parrakeet, Red-rumped	<i>Psephotus haematonotus</i>	5
Parrot, Grand Eclectus	<i>Lorius pectoralis roratus</i>	2
Rail, Weka	<i>Gallirallus australis greyi</i>	2
Starling, Jerdon's	<i>Sturnus burmanicus</i>	5
Starling, Violet-backed	<i>Cinnyricinclus leucogaster</i>	1
Swan, Mute	<i>Cygnus olor</i>	3
Waxbill, Orange-cheeked	<i>Estrilda melpoda</i>	2
Waxbill, Red-eared	<i>Estrilda troglodytes</i>	6
*Waxbill, Sundervall's	<i>Estrilda rhodopyga</i>	1
Weaver, Little Masked	<i>Ploceus luteolus</i>	2
Weaver, Red-billed	<i>Quelea quelea</i>	10

\*denotes possible first breeding in Great Britain.

One of the youngsters which was not reared was a Bartlett's Bleeding Heart Pigeon chick (*Gallicolumba criniger*). The nest was built under bushes in one of the Temperate House Aviaries but the chick was found dead about eleven days after hatching. The parent birds have been in the collection since December 1969 and it is hoped they will have more success during the coming season.

<i>REPTILES</i>		<i>No. Reared</i>
Gecko, Leopard	<i>Eublepharis macularis</i>	4
Hybrid Ratsnake	<i>Elaphe obsoleta spp.</i>	11
Ratsnake, Texas	<i>Elaphe obsoleta lindheimeri</i>	9
Rattlesnake, Western Diamond-backed	<i>Crotalus atrox</i>	6

The attendance figures for 1972 reached 1,056,000 with some 204,890 visitors paying extra admission to the Tropical House and 241,760 to the Aquarium. The number of booked parties to the Zoo was in excess of 3,100, an increase of several hundred over the previous year.

### SUBSCRIPTION FORMS

New readers of the CHESTER ZOO NEWS who would like to receive the magazine regularly may be interested to know that subscription forms are on display in the souvenir shop. An annual subscription (12 issues) costs 95p, postage paid, which can either be handed over the counter at the shop or posted with the completed form to the Director-Secretary, Chester Zoo, Chester.



The following notice is displayed on several boards in the grounds

Please comply with it at all times.

### FEEDING OF ANIMALS AND BIRDS

**IT IS AN OFFENCE** for any member of the public to offer food of any description to any Animal or Bird in Chester Zoo.

This regulation is made for the sake of the health of the Animals and Birds. Since the NO FEEDING rule was introduced, the number of deaths has dropped appreciably and sickness, due to wrong feeding has been virtually eliminated.

What you may be offering to an animal may only be a sweet or an inoffensive piece of bread, but it can mean a death sentence for the animal. For example, a cough drop, which may relieve your cough, can cause instant death to many Animals and Birds in the Zoo.

You must not lose sight of the fact that you are only one of over a million visitors who visit the Zoo annually. If for instance an elephant had one bun from only one tenth of a day's visitors during the summer, it would eat between three and four thousand. You can guess the result.

We realise what a temptation it is for visitors, particularly children, to feed our Animals and Birds and this is why we invite members of the public to be present at the official feeding times.

This is a polite warning to you, asking you not to feed the animals. If you ignore it, the Keepers are authorised to ask you to leave the Gardens.

**If you really love Animals and Birds, you will appreciate the wisdom of the ruling—No Feeding by members of the public.**

**PLEASE HELP US TO KEEP OUR COLLECTION OF ANIMALS NOT ONLY ALIVE BUT IN FIRST CLASS CONDITION.**

