



Chester Zoo News

AND GUIDE

**THE NORTH OF ENGLAND ZOOLOGICAL SOCIETY
ZOOLOGICAL GARDENS, UPTON - BY - CHESTER**

October 1976

Price 12p



The North of England Zoological Society
ZOOLOGICAL GARDENS, UPTON-BY-CHESTER

COUNCIL

PROF. J. O. L. KING, Ph.D., M.V.Sc., B.Sc.(Agric.), F.R.C.V.S. (Chairman)
HER GRACE SALLY DUCHESS OF WESTMINSTER
H. F. PARKER
J. N. WILSON
J. A. KILPATRICK, M.B., Ch.B., F.R.C.S.E.
F. MOSFORD
H. D. COOPER, F.I.M., F.I.F.F. Cert., A.I.B.
A. K. McGHIE, A.I.B.
G. R. PRYOR, C.Eng., Hon.F.I.Prod.E., F.B.I.M.
A. J. BLAND, Dipl.Arch.R.I.B.A.
R. P. OWEN, A.R.I.C.S.
MRS. B. H. IRVINE
F. S. CARSON, M.C., B.A.(Cantab.)
DR. J. E. D. CHARLES-JONES, M.B., B.S., M.R.C.G.P.
DINAH, LADY TOLLEMACHE
G. S. MOTTERSHEAD, O.B.E., M.Sc., *Director-Secretary*

CONTENTS

| | |
|-------------------------|---|
| <i>page two</i> | General News |
| <i>page four</i> | In Quarantine |
| <i>page seven</i> | Bird Notes |
| <i>pages eight/nine</i> | Zoo Plan |
| <i>page fifteen</i> | Labelling of Tanks in the Aquarium Gardening Notes |
| <i>page sixteen</i> | Subscriptions |

ILLUSTRATIONS

| | |
|----------------------|------------------------|
| <i>page five</i> | Red Kangaroo |
| <i>page eleven</i> | Ornate Lorikeet |
| <i>page fourteen</i> | Aldabra Giant Tortoise |

COVER

*Common Leopard Cub which is being hand-reared by the
Curator of Mammals and Birds*

By courtesy of J. Walker, Daily Mirror

Annual subscription — Two Pounds Twenty-four pence, postage paid
Telephone Chester 20106/7/8

GENERAL NEWS

Of the five Serval Cats in the collection two pairs have been moved from the Cat House to the old Cheetah Enclosure near the Oakfield Restaurant, leaving a spare male in the Cat House. This new enclosure is more satisfactory for the Servals as it has a spacious grass paddock covered with trees. During the Autumn we are going to plant various shrubs and grasses there to give the enclosure a more natural appearance. Several hollow logs have been placed inside the enclosure in which these animals can hide.

These Cats are well-known to regular visitors to the zoo; however, no doubt readers would like to know a little more about them. In their natural environment they are to be found in the African bush; they do not like to be far from water and do not favour arid, open plains.

Felis serval are lightly built, of medium size, the head and body being 3ft in length and the tail about another 12in. Their legs are long, the head is small and the neck rather long; the ears also are comparatively long. Serval Cats have an orange-brown coloured coat marked with black spots.

Servals hunt by night, lying concealed in thick bush for most of the day. They are predators of the hare, the duiker, and of birds. A hole in a grass clump or a burrow is where they give birth to their young. The gestation period is approximately 2½ months.

We try to give our animals as much space and comfort as possible and feel sure the Serval Cats will be contented in their new home.

* * *

A Giant Kudu (*Tragelaphus strepsiceros*) was born in August

this year. These antelopes share an enclosure with the ostriches and unfortunately this youngster was kicked by one of them soon after it was born, severely injuring its leg. The Curator of Mammals and Birds took it for hand-rearing and treatment by the vet.

The baby was kept going for two weeks on a special milk diet which we now know to be satisfactory. Unfortunately, however, the veins in its leg had been damaged by the blow and not enough blood supply was getting through to the extremity in order to obtain a complete recovery. Regrettably, the youngster had to be put down.

Giant Kudu can be seen in Paddock 92. We have no male at the present time but fully-grown males stand at 5½ft. tall at the shoulder and weigh approximately 650lbs. The head is carried high, and the males have majestic spiral horns which grow to 5ft. in length. The females are not so large and do not grow horns.

Ranging from Cape Province to Kenya and the Sudan, this species likes bushy or tree-covered plains and broken hill country, and never wanders far from water. Bulls utter the loudest bellowing of any species of antelope.

* * *

WALLACE EXPEDITION TO AMAZONIA

Mr. W. H. Timmis, the Curator of Mammals and Birds at Chester Zoo, has been invited to join the above expedition and has accepted. He will report biologically on various Amazonian birds in order to enhance our knowledge of captive breeding programmes for rare and endangered species. He will undertake population studies of birds in various types of tropical habitats, herpetological surveys of tropical habitats and, if possible, bring back a small selection of birds and reptiles for future study under suitably active conditions. Mr. Timmis has been asked to do some work for the British Museum of Natural History, and also for the World Pheasant Association.

This small expedition will take place over twelve weeks during part of June, July, August and September, 1978. The aims of the expedition are to continue a route followed by Wallace during the 1850's along the Rio Negro, and by so doing, arrive at a region which Wallace regarded as the best collecting site he had ever visited.

The expedition wishes to determine whether the area is still rich in flora and fauna, or if modern man and his pollution has had any adverse effect on this isolated region.

Upon arrival the expedition will undertake various physiological and optical surveys which will include the following:—

Surveying and selected sampling of flora and fauna from the River Uaupes.

Soil and jungle canopy parasites, tree-dating and pollution studies.

To produce scientific reports of this expedition.

To record this work on film and by so doing it is to be hoped to improve undoubtedly Wallace's standing in the scientific world through publication, etc.

IN QUARANTINE AT OUR OWN STATION

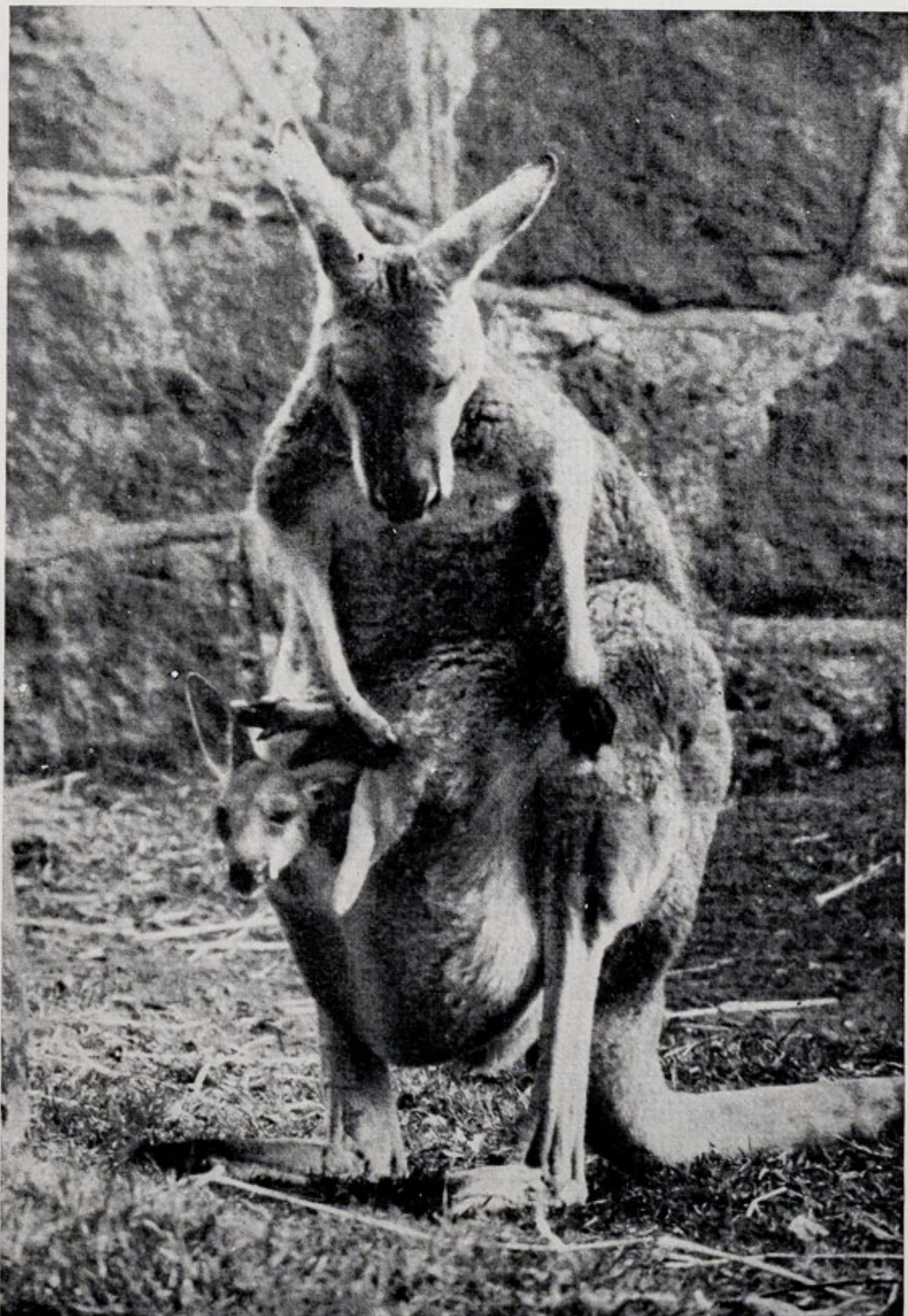
The following mammals have been received in exchange from Perth Zoo, Australia and are at present in quarantine in accordance with Government regulations:

0.4 Red Kangaroos (*Megaleia rufa*)

2.2 Western Forester or Grey Kangaroos (*Macropus ocydromus*)

2.2 Agile Wallabies (*Wallabia agilis*)

The distribution of the Red Kangaroo (*Megaleia rufa*) is the most extensive of any individual kangaroo. It occurs throughout the



By courtesy of J. Morris, Daily Mail

RED KANGAROO (*Megaleia rufa*) WITH ITS YOUNG

plains and drier inland areas of Australia with the exception of the extreme eastern and western corners of the continent, and the mountainous coastal or tropical parts of the far northern and eastern coast.

We already have in the collection two males which were received from Perth Zoo, Australia in August 1972. The does of course will not be on show for another six months as they are at our Quarantine Station. However, when eventually they are brought into the zoo they will be an attractive sight with their soft-toned smokey-blue fur, in contrast with the brilliant red colour of the males. In Australia the doe is given the nick-name of "the blue flier."

Both males and females are very large animals. On page 5 is a photograph showing the tremendous height of a doe against the size of her youngster. The head of the adult doe is identified by the great size of the long and wide nasal part in contrast with the small cranium. The head of the male has a large and strongly curved snout, its hair extending below the top level of the nostrils. It has a dark, blackish whisker shading towards the eye, with a whitish line below it. Both sexes are powerfully and gracefully built. The males have a pinkish-crimson colour on the throat and chest which consists of a pollen-like substance. Young of both sexes are a mixture of bluish and reddish colouration.

Red Kangaroos are to be found in "mobs" of approximately twelve or more, and the males are able to defend themselves at close quarters. In the wild kangaroos have been hunted extensively, but although their numbers have been reduced they are now protected in many areas, thus ensuring their survival. These animals do well in captivity as they have rather friendly dispositions.

* * *

It was with pleasure that quite recently we accepted a female

Jaguarundi (*Felis yagouaroundi*) in exchange from Rotterdam Zoological Gardens. We already had in the collection a female, presented to us in 1972, a male bred in the zoo in 1973, and a male presented to the zoo in 1975. We are hopeful that we might breed from the two pairs. Captive births are unusual as Jaguarundis are not often seen in zoos. Our animals can be seen in Enclosure 90.

The distribution of the Jaguarundi is from the south western United States south to Paraguay. There would appear to be only one species, and this exists in two colour phases, red and grey. Inhabiting savannah grasslands and the edges of forests, the Jaguarundi is an excellent runner, coursing either in open ground or thin undergrowth, sometimes for a distance of about one mile.

This small member of the cat family has a long body, comparatively short legs, and dense, short greyish-black fur. There are very few distinct blotches or stripes on the coat. They have an otter-like appearance, an alternative name for the Jaguarundi being the Otter Cat. These animals adapt quite readily to water.

The gestation period is from 72 to 75 days, and the litter varies from one to four kittens.

BIRD NOTES

- 1 White-cheeked Bulbul (*Pycnonotus leucogenys*)
- 1 Black Bulbul (*Hypsipetes madagascariensis*)
- 3 Lesser Patagonian Conures (*Cyanoliseus patagonus*)
- 2 Sundervall's Waxbills (*Estrilda rhodopyga*)
- 1 Green-naped Lorikeet (*Trichoglossus haematod micropteryx*)
- 3 Nanday Conures (*Nandayus nanday*)
- 2 Tri-coloured Nuns (*Munia malacca*)
- 1 Little-masked Weaver (*Ploceus luteolus*)
- 4 Orange-cheeked Waxbills (*Estrilda melpoda*)
- 1 Guiana Parrotlet (*Forpus p. passerinus*)

CHESTER ZOO

THE NORTH OF ENGLAND
ZOOLOGICAL SOCIETY
ZOOLOGICAL GARDENS

FOR A COMPLETE TOUR OF THE ZOO — Follow Nos 1-16 to South Entrance
or Nos 16-116 from North Entrance then return to Nos 1-14

**Chester Zoo is Open Daily
from 9.00 a.m. until dusk.**



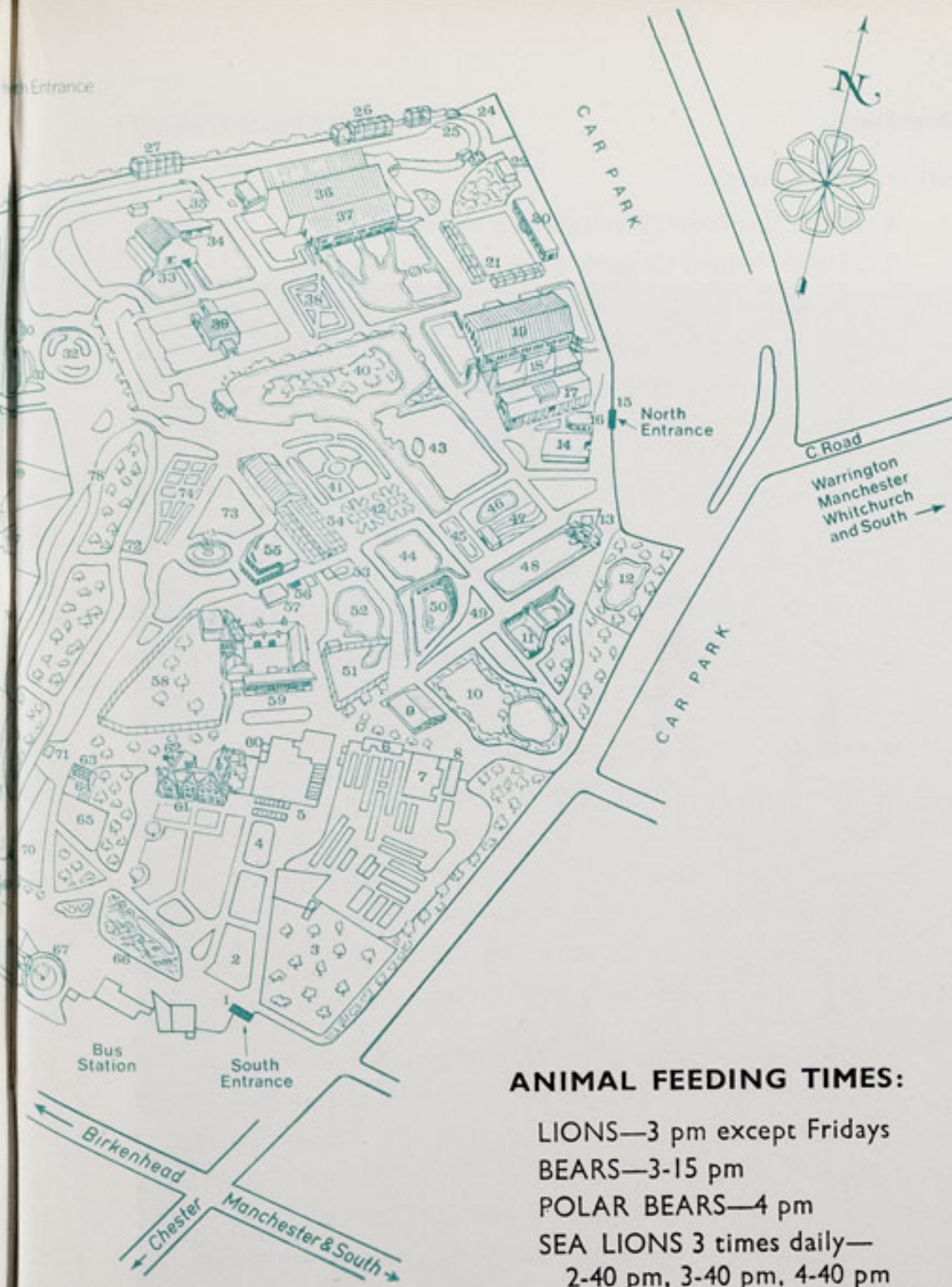
1. SOUTH ENTRANCE

2. Peacock Enclosure
3. Wapiti Paddock
4. Coati Enclosure
5. Aviaries
6. Milk Bar
7. CORONATION HALL
8. CLOAKROOM, FIRST AID, TOILETS, MOTHER AND BABY ROOM
9. CAFETERIA
10. Picnic Lawn
11. Bears
12. Sunken Garden
13. Kiosk
14. AQUARIUM
15. NORTH ENTRANCE
16. PUSH CHAIRS, WHEEL CHAIRS, LOST CHILDREN
17. PARROT HOUSE
18. Free Flight Aviary
19. APE HOUSE
20. Picnic Lawn
21. Aviaries
22. TOILETS
23. Tuatara Exhibit
24. Peccaries
25. Waterbus Halt
26. Birds of Prey Aviaries
27. Condor Aviary
28. Jackal and Hyena Enclosures
29. Animal Enclosure
30. Porcupine Enclosure
31. Coypus
32. Beavers
33. Giraffe House

34. Camel House
35. Waterbus Halt
36. TROPICAL, NOCTURNAL & REPTILE HOUSES
37. CHIMPANZEES
38. Floribunda Rose Garden
39. Mammal House
40. Gibbon Island
41. H.T. Rose Garden
42. Aviaries
43. Flamingos
44. Waterfowl Enclosure
45. Waterfowl Enclosure
46. Waterfowl Enclosure
47. Penguins
48. Sealions
49. Rock Garden
50. Polar Bears
51. Cat Enclosure
52. Waterfowl Enclosure
53. Anteaters
54. BIRD HOUSE
55. FOUNTAIN RESTAURANT
56. Ape Nursery
57. TOILETS
58. Lions
59. SOUVENIR SHOP
60. TOILETS
61. OAKFIELD RESTAURANT

62. P.O. Telephone
63. Aviary
64. Animal Enclosure
65. Animal Enclosure
66. Ornamental Rock Garden
67. Malayan Bears
68. Animal Enclosure
69. Aviary
70. Cheetahs
71. WATERBUS BOOKING OFFICE AND KIOSK
72. Waterbus Halt
73. Fountain Flower Gardens
74. Rose Garden
75. Red Lechwe
76. Red Lechwe
77. Deer or Antelope Enclosure
78. Waterbus Halt
79. Zebra and Deer Enclosure
80. Kamchatka Bears
81. ELEPHANTS
82. Hippos
83. Tapirs
84. Small Mammal House
85. Waterfowl Enclosure
86. Ankole Cattle
87. Emus and Cranes
88. Stork Enclosures
89. Baboon Pens
90. Cat House
91. Big Cat Enclosures

92. Antelope Enclosure
93. Antelope Enclosure
94. Antelope Enclosure
95. Zebras
96. Zebras
97. Waterfowl Enclosure
98. Waterfowl Enclosure
99. Waterfowl Enclosure
100. Blackbirds
101. Wallabies
102. Animal Enclosure
103. Wallabies
104. Pere David's Paddock



ANIMAL FEEDING TIMES:

LIONS—3 pm except Fridays

BEARS—3-15 pm

POLAR BEARS—4 pm

SEA LIONS 3 times daily—
2-40 pm, 3-40 pm, 4-40 pm

ANIMALS MAY BE MOVED
FROM TIME TO TIME

105. Llamas
- 105a. Llamas
106. Arabian Gazelles
107. Animal Paddock
108. Bison
109. Pere David's Deer Paddock
110. 'Prairie Marmots, Alpacas
111. Antelope Enclosure
112. RHINOS
113. TOILETS
114. Mpila Snack Bar
115. Antelope Enclosure
116. MONKEY HOUSE

BIRD NOTES --cont'd.

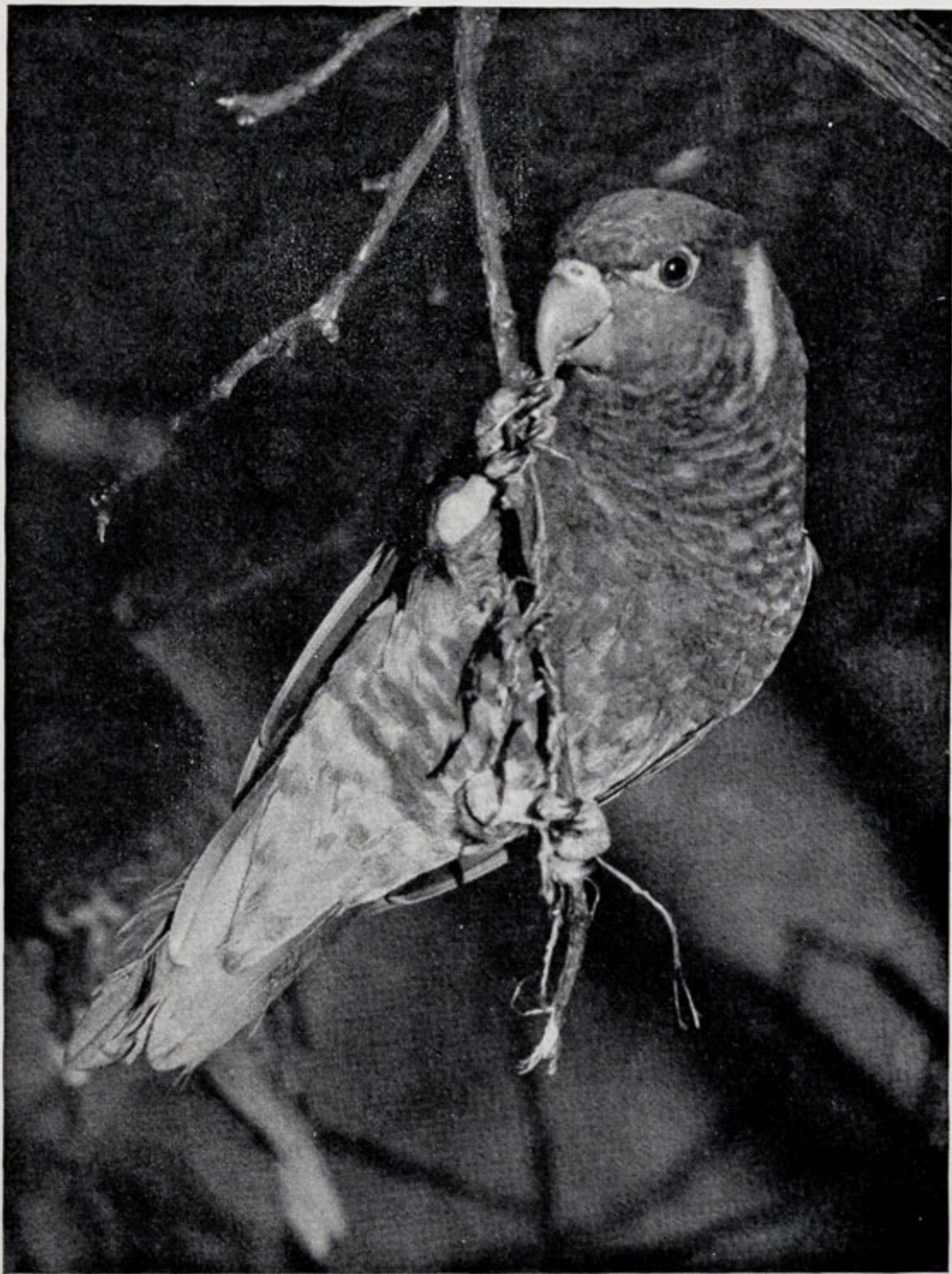
- 4 Ornate Lorikeets (*Trichoglossus ornatus*)
- 2 Crimson-bellied Conures (*Pyrrhura rhodogaster*)
- 7 Quaker Parakeets (*Myiopsitta monachus*)
- 1 Yellow-fronted Amazon (*Amazona ochrocephala*)
- 1 Scaly-breasted Lorikeet (*Trichoglossus chlorolepidotus*)
- 3 Peacocks (*Pavo cristatus*)

The distribution of the White-cheeked Bulbul (*Pycnonotus leucogenys*) is the whole of the Vale of Kashmir, where it is very common. The habitat is the light forest and secondary growth, hedgerows, and bushes far from habitation—more often in bushes rather than trees. *Pycnonotus leucogenys* are usually to be found in pairs which sometimes join together into a small party.

In general Bulbuls have an extensive range in southern Asia and Africa. Most specimens are not particularly striking but are conspicuous by their actions, being gregarious, inquisitive, somewhat spirited and noisy. They are however cheerful and friendly and keep up a constant musical chatter; their songs are delightful. Some species are crested, and the sexes are similar in colouration, the males being slightly larger than the females.

White-cheeked Bulbuls are very tame and quite pleasing, having cheerful and confiding ways. In the winter large numbers invade human dwellings, living quite happily with the occupants, keeping warm and safe during the cold weather. The general diet of these birds however, consists of berries and insects such as ants and beetles. As one can imagine they are pests amongst vegetables and fruits such as currants and raspberries.

Nesting in Kashmir is sometimes in April but mostly in May and June. The nests are flimsy structures, being built in positions varying from about two to ten feet from the ground. More often than not the nests are frail-looking, but sometimes are quite substantial and deep. The clutch consists of three to four eggs, rarely five.



By courtesy of K. W. Green, A.R.P.S.

ORNATE LORIKEET (*Trichoglossus ornatus*)

This tiny bird is quite attractive with its white cheeks, dark olive-green upper parts and yellow patch under the tail. It has a crest which curves right over the bill. As in other bulbuls it has a musical chatter; both sexes have the same colouration, and the male is only slightly larger than the female.

* * *

We are pleased to report that a Green-naped Lorikeet (*Trichoglossus haematod micropteryx*) has also been bred quite recently in the zoo. The distribution of this sub-species is New Guinea, where it inhabits savannah woodland, secondary forest, clearings in primary forest and trees along the watercourses. It prefers the edges of rain forest and seems to avoid a closed canopy.

In New Guinea the nesting period is in early January. Nests are built in a hollow limb or hole in a tree, quite high from the ground. The eggs (the usual clutch is two, occasionally three) are laid on decayed wood dust in the nesting hollow. Incubation lasts for about 25 days and both parents feed the young. The male would appear not to assist in the incubation period.

These birds are to be observed in pairs, small flocks, or flocks of hundreds according to the availability of flowering trees upon which they feed.

* * *

Four Ornate Lorikeets (*Trichoglossus ornatus*) were bred in August this year. We have bred these Lorikeets several times over the last few years, but have not been able to rear the young. However the chicks are being reared successfully this time, and we feel the breeding is well worth a mention.

The distribution of Ornate Lorikeets is Celebes and most larger offshore islands, Indonesia. They are common in the Celebes,

inhabiting wooded mountain country. Their food consists of pollen, nectar, fruits, blossoms and seeds, the birds congregating in very large numbers in the trees when feeding. Often however they can be seen in pairs or small flocks.

Ornate Lorikeets have a swift direct flight, and their call is a shrill "kreet . . . kreet," or a high-pitched "wee-oo-wee."

* * *

Two Crimson-bellied Conures (*Pyrrhura rhodogaster*) are now out of the nestbox; these are from a pair presented to us in October last year. So far as we know this is a first breeding in the British Isles.

Crimson-bellied Conures originate from Central America, the general distribution being Northern Brazil, south of the Amazon River, between the Madeira and Tapajos Rivers, east along the Jamauchin River, and south to Northern Mato Grosso.

When hovering in tree-tops these Conures chatter continuously. However, it is not easy to detect them amidst the foliage, despite their brightly-coloured plumage; when the birds sense danger they sit motionless in the trees. Their colouration is blue to yellow to green, the bend of the wing, lesser underwing coverts, lower breast and abdomen being crimson. They have a brownish-red tail marked with green and tipped with blue.

* * *

Another interesting breeding is that of a Scaly-breasted Lorikeet (*Trichoglossus chlorolepidotus*). Several of these Lorikeets have been bred in the zoo, two of them in October last. These birds are from North-eastern Australia from about Cooktown, north Queensland, south to the Illawarra district of New South Wales. Their habitat is mostly in the lowlands, frequenting most types of country wherever flowering or fruiting trees exist. Very large flocks are to be observed in the north east of Australia.



By courtesy of K. W. Green, A.R.P.S.

CLOSE-UP OF THE HEAD AND NECK OF OUR MALE ALDABRA GIANT TORTOISE (*Geochelone gigantea*) The tortoises can be seen in an enclosure opposite the Tropical House

The general plumage colour of the Scaly-breasted Lorikeet is green, but the neck, throat and breast are yellow with a broad border of green which gives a scalloped appearance. The underwing coverts and a broad band across the underside of the flight feathers are orange-red, the iris orange-yellow, the legs greyish-brown, and the bill is a coral colour. Immature birds are very similar in colouration with the exception of the bill, which is a dusky brown with yellow markings at the base; also the iris is a pale brown instead of coral colour.

In their natural habitat these birds breed from May to February (almost all the year round), but in northerly areas this depends largely on rainfall. They nest in a hollow limb or hole high up in a tree lined with a layer of decayed wood dust. Usually there are two eggs in the clutch, but sometimes three. The incubation period is approximately 25 days, and only the female broods. Both parents feed the youngsters three times a day.

Nesting in the zoo takes place from August to December.

SOME NOTES ON THE LABELLING OF TANKS IN THE AQUARIUM

It was decided to revise the labelling system in the Aquarium because of new exhibits and changes which frequently take place. The first aim of the revision was to give each species its own label. The second aim was to make the labels larger and to place them in a prominent position above the tanks. This necessitated the erection of a metal fitting which "runs" round the aquarium. Here the new labels can be slotted into position and screwed in for greater security. They are white with black lettering and each measures 8in x 4½ in.

The new system has a number of advantages; the labels are much larger and clearer. Larger print is easier to read and shows up well in the aquarium. Now that each species has its own label, no problems arise when a fish is moved into another tank or removed completely for breeding purposes; only the removal of the particular label is required. There were complications when one label served the community tank.

Some 170 labels have now been made and when these have been erected we plan to number each tank for classification purposes. These numbers will be placed in the space above the tank where the former labels fitted.

GARDENING NOTES

The experts tell us that 1976 was one of the driest years on record and earlier in the month one did not have to travel far into the countryside to realise how true this was. Here at the zoo we managed to keep our flowerbeds up to the usual standard from our own supply of water, but it was difficult to water everything in a large area.

The shrubs have suffered and no doubt some will not recover. Fortunately we have a large stock for replacement in our own nursery. Some of the forest trees are suffering from lack of water, noticeably birch, beech and sycamore.

During September we took cuttings off the various bedding plants for next summer and these are now rooted successfully.

From the Fuchsia, Lantana and Heliotrope cuttings we select some to grow on into standards. Our Antirrhinums flowered very well in the early part of the summer, but in August the disease called "rust" started to spread through them and this is not controlled easily.

Begonia semperflorans have been very good this summer. Once established after planting they enjoy the sunny weather.

All the standard Fuchsias will be lifted and re-potted for next year. There will also be approximately 6,000 tuberous Begonias to lift and put in a cool greenhouse to gradually dry off. Manure will be dug into the beds and borders and this contains the nutrient for a year.

SUBSCRIPTIONS

New readers of the CHESTER ZOO NEWS who would like to receive the magazine regularly may be interested to know that subscription forms can be obtained from the souvenir shops. An annual subscription (12 issues) costs £2.24, postage paid, which can either be handed over the counter at the shops or posted with the completed form to the Director-Secretary, Chester Zoo, Chester.

**The following notice is displayed on several boards in the grounds
Please comply with it at all times**

FEEDING OF ANIMALS AND BIRDS

IT IS AN OFFENCE for any member of the public to offer food of any discription to any Animal or Bird in Chester Zoo.

This regulation is made for the sake of the health of the Animals and Birds. Since the **NO FEEDING** rule was introduced, the number of deaths has dropped appreciably and sickness due to wrong feeding has been virtually eliminated.

What you may be offering to an animal may only be a sweet or an inoffensive piece of bread, but it can mean a death sentence for the animal. For example, a cough drop, which may relieve your cough, can cause instant death to many Animals and Birds in the Zoo.

You must not lose sight of the fact that you are only one of over a million visitors who visit the Zoo annually. If for instance an elephant had one bun from only one tenth of a day's visitors during the summer, it would eat between three and four thousand. You can guess the result.

We realise what a temptation it is for visitors, particularly children, to feed our Animals and Birds and this is why we invite members of the public to be present at the official feeding times.

This is a polite warning to you, asking you not to feed the animals. If you ignore it, the Keepers are authorised to ask you to leave the Gardens.

If you really love Animals and Birds, you will appreciate the wisdom of the ruling — No feeding by members of the public.

**PLEASE HELP US TO KEEP OUR COLLECTION OF
ANIMALS NOT ONLY ALIVE BUT IN FIRST CLASS
CONDITION**

Printed in England by
W. H. Evans & Sons Ltd.
Sealand Road Trading Estate
Chester