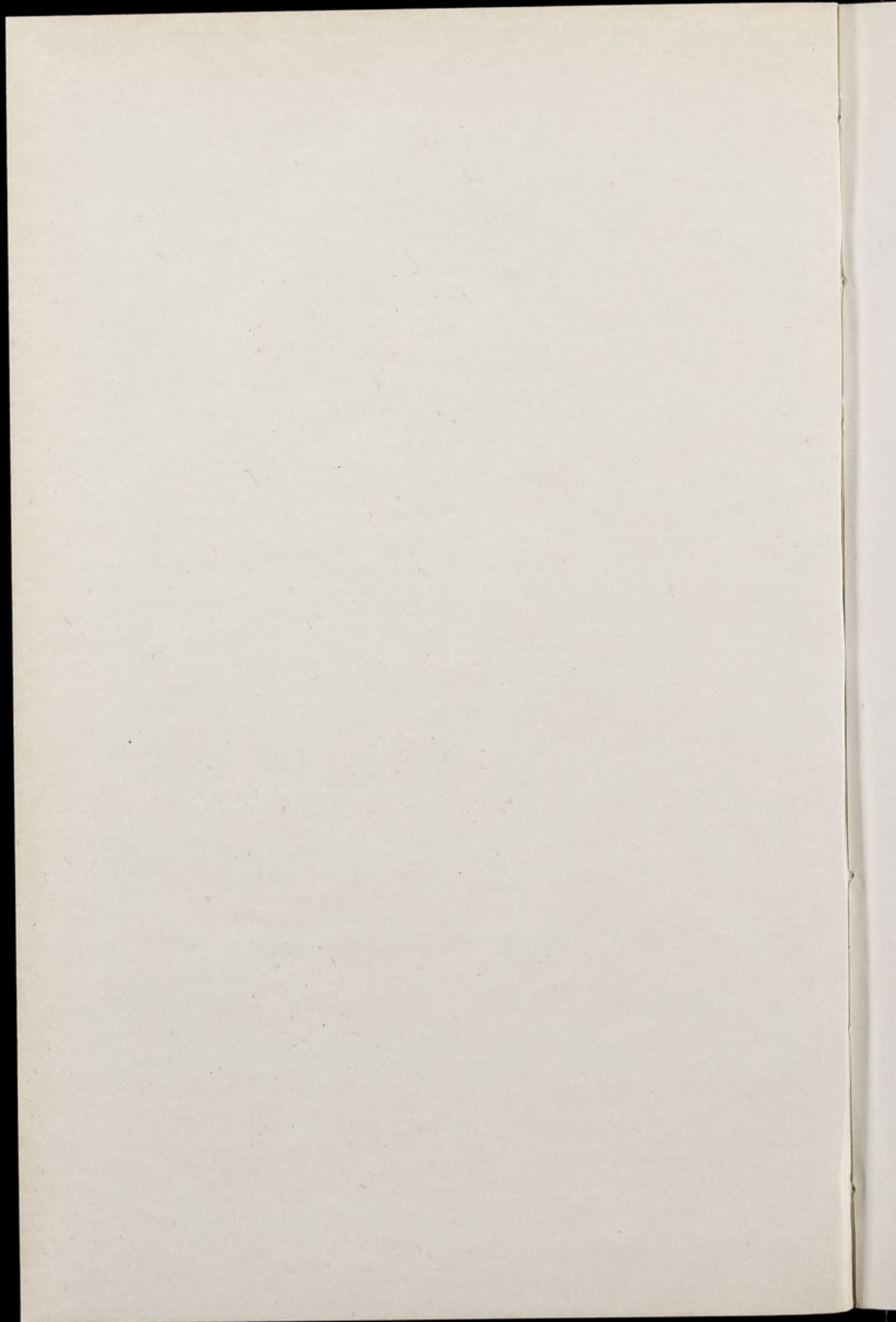


CHESTER ZOO NEWS

AND GUIDE

June 1977

Price 12p



The North of England Zoological Society
ZOOLOGICAL GARDENS, UPTON-BY-CHESTER

COUNCIL

PROF. J. O. L. KING, Ph.D., M.V.Sc., B.Sc.(Agric.), F.R.C.V.S., F.I.Biol.
(Chairman)
HER GRACE SALLY DUCHESS OF WESTMINSTER
H. F. PARKER
J. N. WILSON
J. A. KILPATRICK, M.B., Ch.B., F.R.C.S.E.
F. MOSFORD
H. D. COOPER, F.I.M., F.I.F.F. Cert., A.I.B.
G. R. PRYOR, C.Eng., Hon.F.I.Prod.E., F.B.I.M.
A. J. BLAND, Dipl.Arch.R.I.B.A.
R. P. OWEN, A.R.I.C.S.
MRS. B. H. IRVINE
F. S. CARSON, M.C., B.A.(Cantab.)
DR. J. E. D. CHARLES-JONES, M.B., B.S., M.R.C.G.P.
DINAH, LADY TOLLEMACHE
W. KELSALL, O.B.E., Q.P.M.
G. S. MOTTERSHEAD, O.B.E., M.Sc., *Director-Secretary*

CONTENTS

<i>page two</i>	Our baby elephant
<i>page four</i>	Arrivals and Births
<i>page five</i>	Hand Rearings
<i>pages eight/nine</i>	Zoo Plan
<i>page ten</i>	Bird Notes
<i>Page eleven</i>	Reptile News
<i>page twelve</i>	Insectarium
<i>page thirteen</i>	Official Opening
<i>page sixteen</i>	Queen Elizabeth II Silver Jubilee Garden Subscriptions

ILLUSTRATIONS

<i>page three</i>	Jubilee
<i>page four</i>	Jubilee stepping out with Mother
<i>page six</i>	Chimpanzee "Chad"
<i>page seven</i>	Young Arabian Gazelle
<i>page twelve</i>	Rhinoceros Iguanas
<i>page fourteen</i>	"Noah" and the "Four Winds"
<i>page fifteen</i>	Seán Rice

COVER

"Jubilee" at two weeks old

By courtesy of Kevin Fitzpatrick, Daily Mirror

Annual subscription — Two Pounds and Thirty Pence, postage paid
Telephone Chester 20106/7/8

OUR BABY ELEPHANT

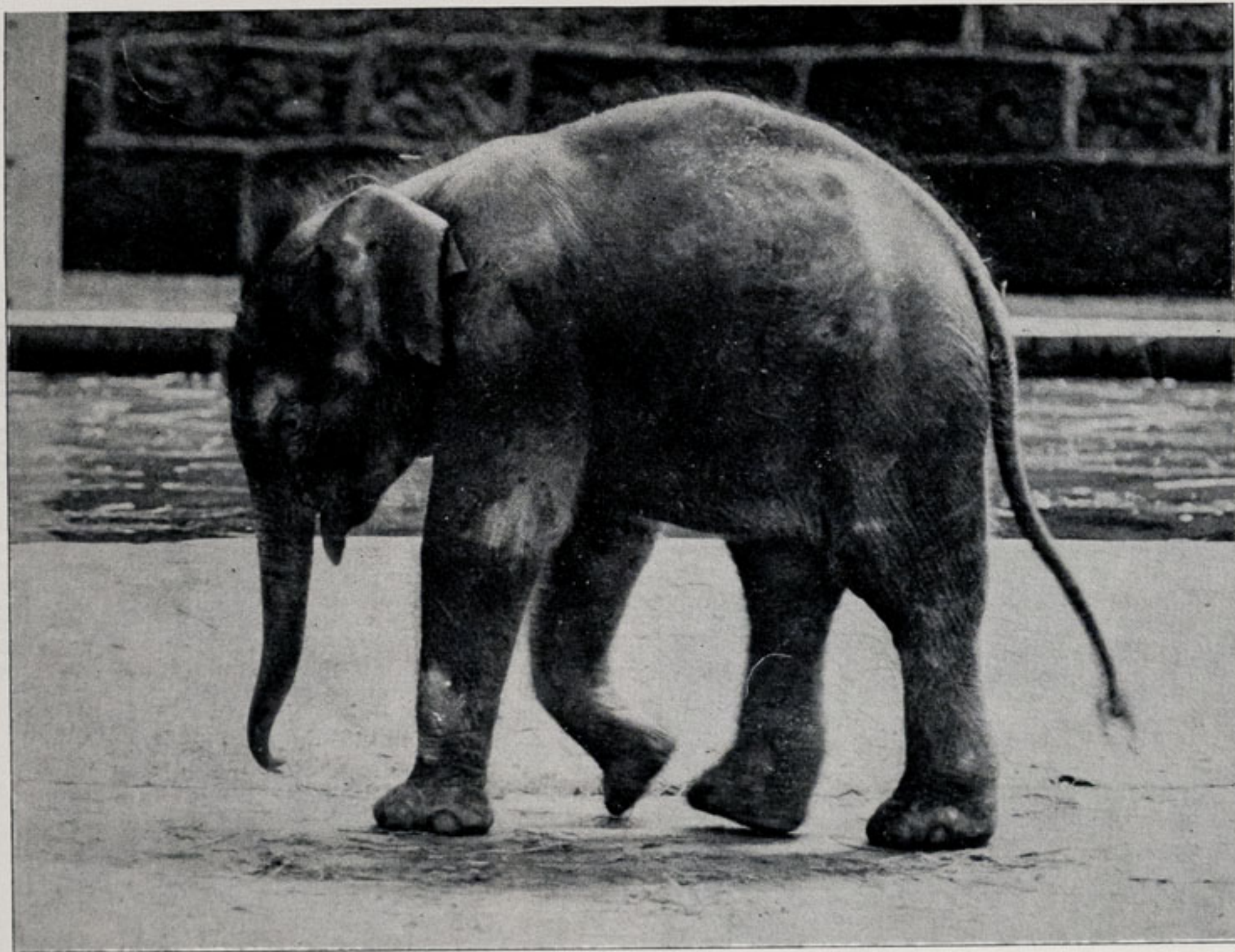
As a result of the competition organized by the television programme "Blue Peter," the name "Jubilee" has been chosen for our young male Indian Elephant.

"Jubilee" continues to grow daily in strength, and his weight at the time of writing has increased by about 10-lbs. since birth. The keepers tried to coax the mother "Judy" to allow her baby outside the Pachyderm House on to the open paddock but at first she must have felt that the weather was not warm enough. However, with the first really warm day all the elephants came out. The little one has taken to life in the open and already is a great source of interest and amusement to the visitors coming daily into the zoo to see him. We hope to give short progress reports in the magazine as the time goes on, and to publish photographs.

The ears of the young elephant are at this time a pinky-brown colour. When he is older the colour of his ears will change to a lightish-grey. His hide is covered with short, grey-coloured hairs. From the first day of his birth, his mother and "Sheba" our other female, have kept the little one moving about. Elephants sleep for very short periods only and so "Jubilee" must be brought up in the traditional style—even when he crosses his legs in an effort to sit down and have a rest when he thinks mother isn't looking. However he does seem to be surviving very well. He is looking more like an elephant now, waving his ears about and exploring the ground with his trunk.

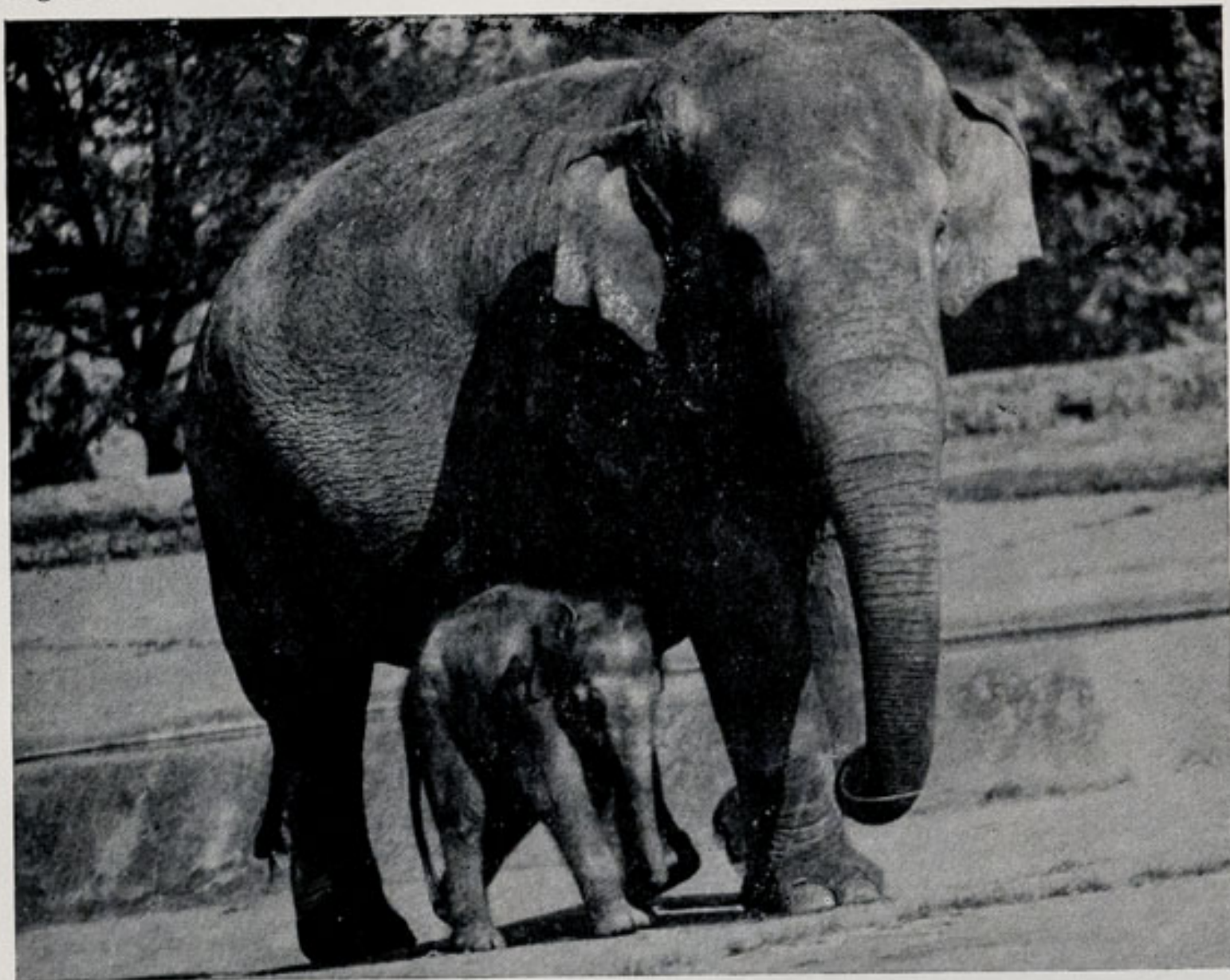
Elephants are entirely herbivorous, in the wild consuming several hundred pounds of leaves, shoots, bamboo, reeds, grasses and fruit every day. The food is picked up by the sensitive trunk which has one "finger" at the tip (the African elephant having two "fingers"). In the wild each animal drinks enormous quantities of water each day, *i.e.*, between 30 and 50 gallons. Elephants squirt water into their mouths from the trunk, which has a capacity of 1½ gallons.

Our elephants are fed on roughage, which we provide in the form of grass, branches of willow and poplar trees grown in the zoo for this purpose. These trees are very quick-growing. In the winter the elephants are fed on turnips grown on our farm. They are also given hay and clover.



By courtesy of Kevin Fitzpatrick, Daily Mirror

"JUBILEE"



By courtesy of K. W. Green, A.R.P.S.

STEPPING OUT WITH MOTHER

The distribution of the Indian Elephant (*Elaphas maximus*) is the forests of southern Asia and Sumatra. It is smaller than the African Elephant (*Loxodonta africana*), the bull rarely reaching to 10-feet at the shoulder, whereas the African Elephant can reach a height of 11-ft. at the shoulder. An adult Indian Elephant would weigh about 4-tons, its tusks measuring five to six feet in length.

The expected life-span of an elephant is about the equivalent of that of man, *i.e.*, sixty to seventy years. An interesting recording of the elephant is that these animals were first seen in Europe in the year BC 280. The first elephant to arrive in England was in the year 1257, having been presented to Henry III by the King of France. It was kept in the Tower of London, and died at the early age of twelve years.

ARRIVALS AND BIRTHS

The following mammals have been bred in the zoo:

- 1.0 Reindeer (*Rangifer tarandus*)
- 1 Highland Calf (*Bos taurus*)
- 2 Eland (*Taurotragus aryx*)

HAND REARINGS

The appealing photograph on page 6 is that of our latest *Pan troglodytes*, Chimpanzee "Chad." He was taken away from "Chi-chi" his mother, at two months old, when he weighed 5-lbs. 2-ozs. He is the son of a famous father, "Boris," who has had a book written about him called *No he's not a Monkey, he's an Ape and he's my Son*, by Hester Mundis. "Boris" was brought up in a New York apartment by Mr and Mrs. Mundis. He eventually came to live at Chester Zoo when he became too much for the Mundis family.

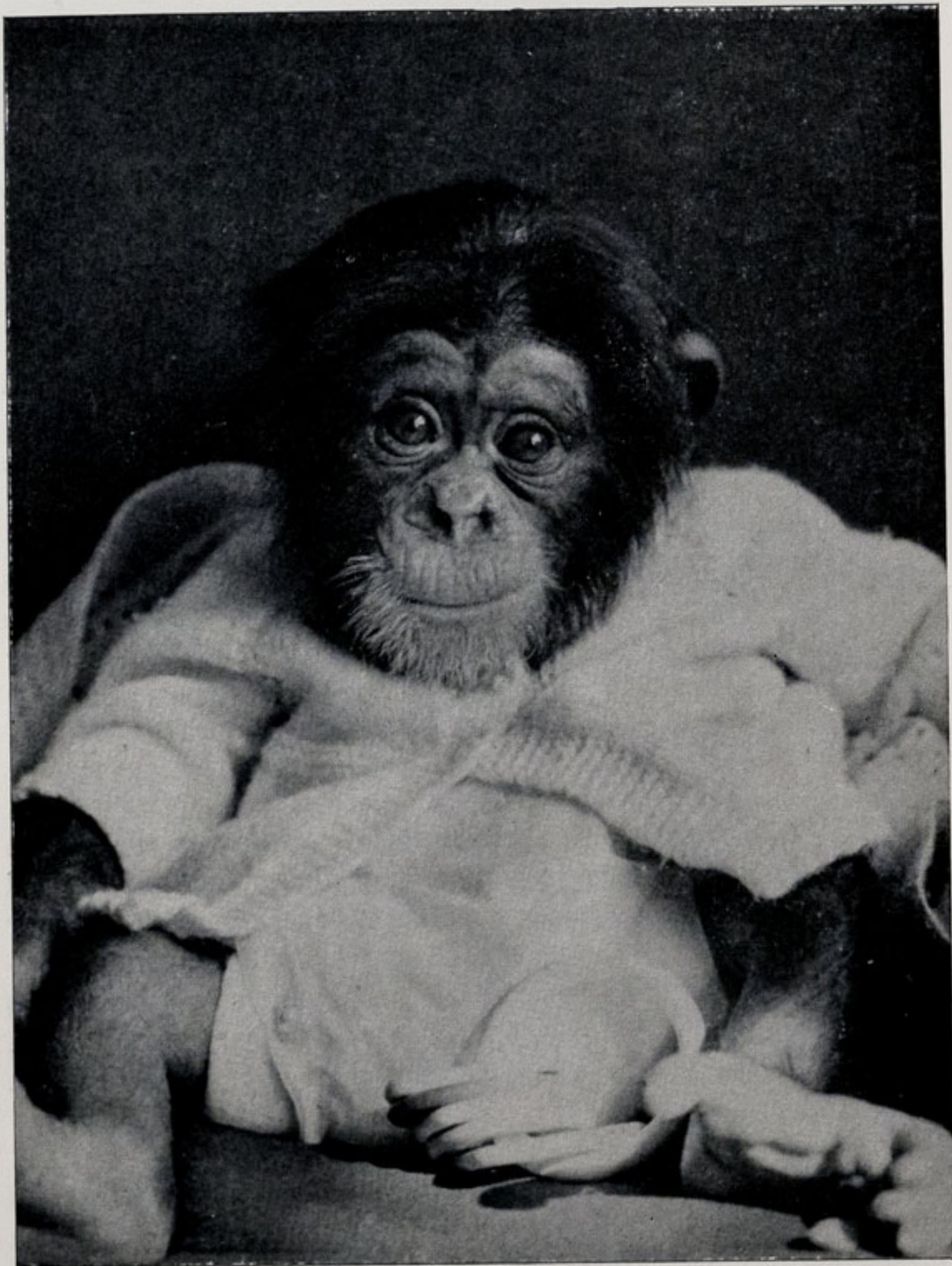
"Chi-chi" has bred several youngsters but each one has died at two months old. She does not seem to be able to rear her young, and "Chad" was rescued and taken to Mrs. Joan Timmis, wife of the Curator of Birds and Apes, for hand-rearing.

At the time of writing "Chad" weighs just 8-lbs. He is very much a baby, spending his days sleeping most of the time. When awake he chuckles and laughs, playing with his hands as any human baby would. He is very advanced and is "talking" a lot for his age.

* * *

An Arabian Gazelle (*Gazella arabica*) was bred in the Zoo in April. As sometimes happens with animals, the mother did not feed it and the youngster got into a weak state. Mr. Peter Wait, Curator of Mammals, took the animal to his home and put it under an infra-red heating lamp. Initially he fed it on a mixture of three parts pasturized milk and one part boiled water. The baby took 10 mls. at the first few feeds. It was then fed every three hours from 7.00 a.m. to midnight.

The youngster is now down to four milk feeds a day and started nibbling on about the eighteenth day. It has unfortunately shown a preference for flowers! It is now perfectly healthy and a good-looking animal. Now that the warmer weather is here the youngster is on show in Enclosure 67 at the South Entrance for short periods during the day. A photograph of the young Arabian Gazelle is on page 7 showing it to be quite content in the home with "pussy."



By courtesy of K. W. Green, A.R.P.S.

PAN TROGLODYTES "CHAD" AT THREE MONTHS OLD



YOUNG ARABIAN GAZELLE

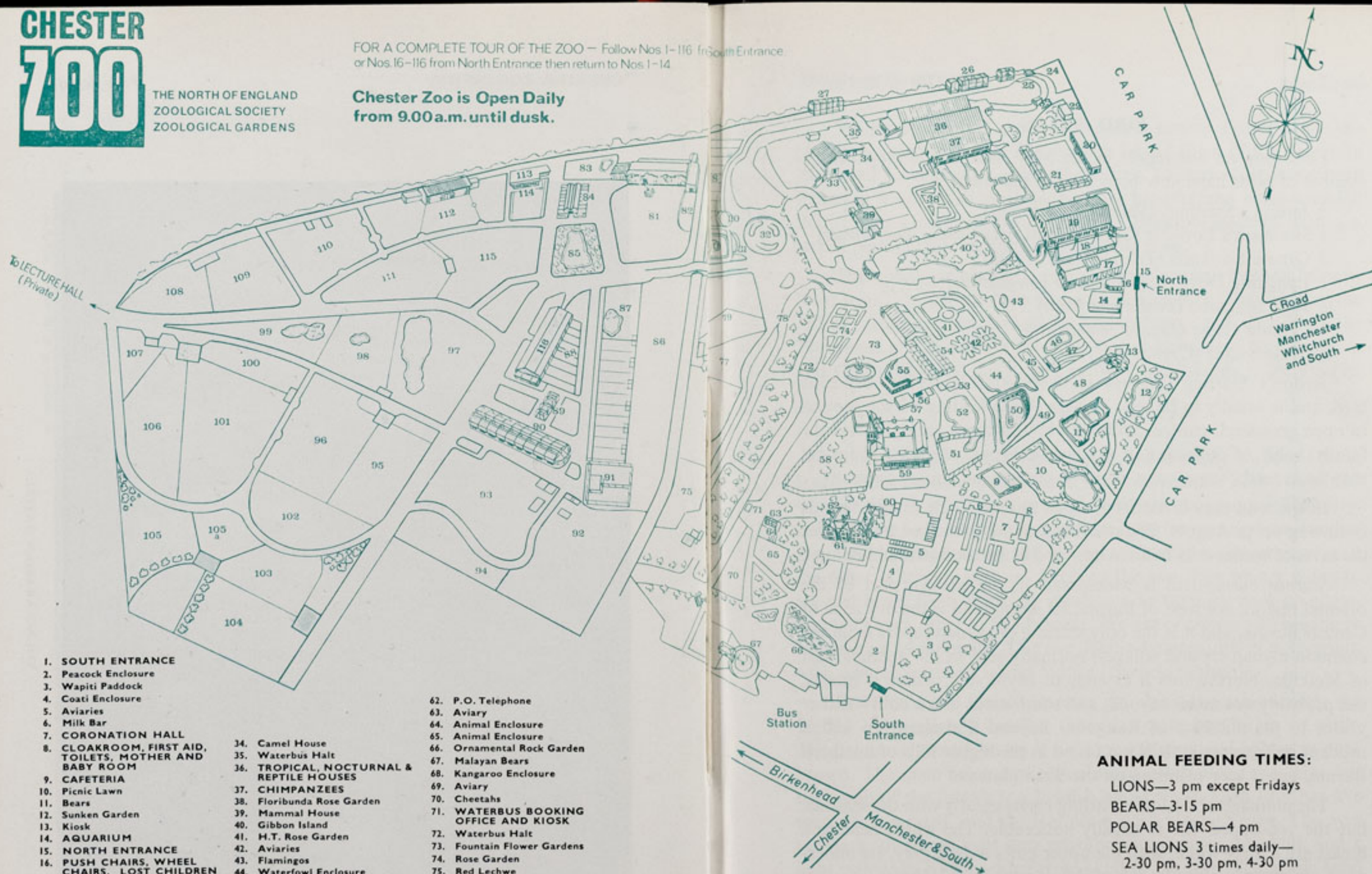
By courtesy of K. W. Green, A.R.P.S.

CHESTER ZOO

THE NORTH OF ENGLAND
ZOOLOGICAL SOCIETY
ZOOLOGICAL GARDENS

FOR A COMPLETE TOUR OF THE ZOO — Follow Nos 1-116 from South Entrance or Nos. 16-116 from North Entrance then return to Nos 1-14

**Chester Zoo is Open Daily
from 9.00 a.m. until dusk.**



1. SOUTH ENTRANCE

- 2. Peacock Enclosure
- 3. Wapiti Paddock
- 4. Coat Enclosure
- 5. Aviaries
- 6. Milk Bar
- 7. CORONATION HALL
- 8. CLOAKROOM, FIRST AID, TOILETS, MOTHER AND BABY ROOM
- 9. CAFETERIA
- 10. Picnic Lawn
- 11. Bears
- 12. Sunken Garden
- 13. Kiosk
- 14. AQUARIUM
- 15. NORTH ENTRANCE
- 16. PUSH CHAIRS, WHEEL CHAIRS, LOST CHILDREN
- 17. PARROT HOUSE
- 18. Free Flight Aviary
- 19. APE HOUSE
- 20. Shop and Kiosk
- 21. Aviaries and Picnic Lawn
- 22. TOILETS
- 23. Tuatara Exhibit
- 24. Peccaries
- 25. Waterbus Halt
- 26. Birds of Prey Aviaries
- 27. Condor Aviary
- 28. Jackal and Hyaena Enclosures
- 29. Animal Enclosure
- 30. Porcupine Enclosure
- 31. Coypus
- 32. Beavers
- 33. Giraffe House

- 34. Camel House
- 35. Waterbus Halt
- 36. TROPICAL, NOCTURNAL & REPTILE HOUSES
- 37. CHIMPANZEES
- 38. Floribunda Rose Garden
- 39. Mammal House
- 40. Gibbon Island
- 41. H.T. Rose Garden
- 42. Aviaries
- 43. Flamingos
- 44. Waterfowl Enclosure
- 45. Waterfowl Enclosure
- 46. Waterfowl Enclosure
- 47. Penguins
- 48. Sealions
- 49. Rock Garden
- 50. Polar Bears
- 51. Cat Enclosure
- 52. Waterfowl Enclosure
- 53. Anteaters
- 54. BIRD HOUSE
- 55. FOUNTAIN RESTAURANT
- 56. Ape Nursery
- 57. TOILETS
- 58. Lions
- 59. SOUVENIR SHOP
- 60. TOILETS
- 61. OAKFIELD RESTAURANT

- 62. P.O. Telephone
- 63. Aviary
- 64. Animal Enclosure
- 65. Animal Enclosure
- 66. Ornamental Rock Garden
- 67. Malayan Bears
- 68. Kangaroo Enclosure
- 69. Aviary
- 70. Cheetahs
- 71. WATERBUS BOOKING OFFICE AND KIOSK
- 72. Waterbus Halt
- 73. Fountain Flower Gardens
- 74. Rose Garden
- 75. Red Lechwe
- 76. Red Lechwe
- 77. Deer or Antelope Enclosure
- 78. Waterbus Halt
- 79. Zebra and Deer Enclosure
- 80. Kamchatka Bears
- 81. ELEPHANTS
- 82. Hippos
- 83. Tapirs
- 84. Small Mammal House
- 85. Waterfowl Enclosure
- 86. Ankole Cattle
- 87. Emus and Cranes
- 88. Stork Enclosures
- 89. Baboon Pens
- 90. Cat House
- 91. Big Cat Enclosures

- 92. Antelope enclosure
- 93. Antelope enclosure
- 94. Antelope enclosure
- 95. Zebras
- 96. Zebras
- 97. Waterfowl enclosure
- 98. Waterfowl enclosure
- 99. Waterfowl enclosure
- 100. Blackbuck
- 101. Wallabies
- 102. Animal enclosure
- 103. Wallabies
- 104. Pere David's Paddock

- 105. Llamas
- 105a. Llamas
- 106. Arabian Gazelles
- 107. Animal Paddock
- 108. Bison
- 109. Pere David's Deer Paddock
- 110. Prairie Marmots, Alpacas
- 111. Antelope Enclosure
- 112. RHINOS
- 113. TOILETS
- 114. Mpila Snack Bar
- 115. Antelope Enclosure
- 116. MONKEY HOUSE

ANIMAL FEEDING TIMES:

- LIONS—3 pm except Fridays
- BEARS—3-15 pm
- POLAR BEARS—4 pm
- SEA LIONS 3 times daily—
2-30 pm, 3-30 pm, 4-30 pm

**ANIMALS MAY BE MOVED
FROM TIME TO TIME**

BIRD NOTES

Following on our report in the May issue of the magazine, a number of birds have now been bred in the zoo:

- 3 Jerdon's Starlings (*Sturnus burmanicus*)
- 1 Swainson's Lorikeet (*Trichoglossus haematodus moluccanus*)
- 2 Ornate Lorikeets (*Trichoglossus ornatus*)
- 1 Laughing Dove (*Stigmatopelia senegalensis*)
- 2 Java Sparrows (*Padda oryzivora*)
- 4 Canada Geese (*Branta canadensis*)
- 3 Mute Swans (*Cygnus olar*)

Jerdon's Starling (*Sturnus burmanicus*) is a typical dry-zone bird, and is usually to be seen in large flocks feeding on the ground in open grassland, gardens, cultivation, and scrub jungle. It has the family habit of collecting in a communal roost at night. The roost may be in reeds, sugar-cane, bamboo clumps, or similar cover.

In the wild they breed from April to June, with second broods occurring up to August. The nest is an untidy structure built under the eaves of houses or in holes in trees and in the roofs of thatched huts.

Sturnus burmanicus is widespread in the eastern part of the oriental region, not west of Burma. Its stronghold is the dry zone of Central Burma, and it is the only starling or mynah (apart from the common mynah around villages) normally seen in the uplands west of Meiktila. Northwards it extends to Myitkyina, where it breeds, but probably not much beyond, and southwards it is a cold weather visitor to the outskirts of Rangoon. Beyond that again we find it resident in Tenasserim. It is not found in the higher hills of northern Burma, but is very common on the Shan plateau.

The plumage of Jerdon's Starling varies greatly with the seasons, but the red-tipped bill is usually noticeable. The whole head and breast are a dirty white, with the upper parts a dark grey. Its underparts are purplish. The length of this species is 10 inches.

* * *

A pair of Dusky Thrushes (*Turdus naumanni cunomus*) have been received in exchange.

An adult Perfect Lorikeet (*Trichoglossus euteles*) has been presented to us. These Lorikeets have a distribution in the Lesser Sunda Islands.

We have also had presented to us a female Triton Cockatoo (*Kakatoe galerita triton*). The Papuan Island form of the very rare Blue-eyed Cockatoo is called the Triton Cockatoo. It is eighteen inches in length. The crest feathers are broader and more rounded than in the Greater Sulphur Crested Cockatoo, *galerita*. It has a naked periophthalmic ring, which is pale blue.

This species of cockatoo occurs on the western Papuan Islands, West Irian, throughout New Guinea, the islands in Geelvink Bay, the D'Entrecasteaux and Louisiade Archipelagos, and islands in the Trobriand and Woodlark Groups. It was introduced to Ceramlaut and Goramlaut, Indonesia, and to the Palau Islands in the Pacific.

REPTILE NEWS

Our male Rhinoceros Iguana (*Cyclura cornuta*) is about 4-ft. in length from head to tail. He has been with us for nine years, and we have often tried to acquire a female but without success. Recently, however, we have had two females sent to us for mating from another zoo. One has been mated and has been returned to its own zoo, and the other is staying with us. Between the two zoos we are going to try and breed from them. So much can be done by zoos co-operating with each other in this manner. We are of course still hoping to obtain our own female. The two Rhino-Iguanas are in a vivarium with several Soloman Island Skinks (*Corucia zebrata*).

Both male and female Iguanas are about the same length, the female being slightly smaller than the male but larger in girth. The colour of these iguanas is light grey to grey and brown to dark brown. The male has a darkish-coloured comb along the spine but the comb of the female is a lightish grey-colour. Each foot has five toes, all separated, and the feet are a dark blackish-grey. The eyes are dark, there are light grey protuberances across the skull, and a light yellowish-grey marking from skull to the eyes. The whole head is a more lightish-grey than the grey of the rest of the body. Rhino-Iguanas have rather pleasing reticulated brown to light brown markings on the torso.

The current distribution of the Rhinoceros Iguana (*Cyclura cornuta*) is Haiti and the Dominican Republic, La Gonave, Petit Gonave, and Beata Islands.

These reptiles are not endangered in the wild but there has been



By courtesy of Gordon Kerr

RHINOCEROS IGUANAS (*Cyclura cornuta*)
to be seen in the Vivarium in the Tropical House

a gradual decline in their numbers; there are now probably slightly less than 10,000. Not much is known about the breeding of these iguanas in the wild but juveniles appear to be abundant. The gradual decline in the numbers of these creatures has been due to hunting by the local people for food and for sale to zoos. Where the activities of man have caused habitat destruction the Rhinoceros Iguana has become less prolific. Breeding in captivity is quite rare.

INSECTARIUM

The Insectarium which is housed in the Tropical House now has an interesting stock of different species of insects, its latest addition being the Migratory Locust (*Locusta migratoria*). We have acquired about a dozen of these insects.

The distribution of the Migratory Locust is South East Asia, Africa and southern Europe. These locusts exist in either solitary or gregarious phases, in dry, hot regions, inhabiting crop fields and plains with plenty of plant vegetation. They do not inhabit forests or deserts.

Economically the solitary phase is comparatively harmless, but when these insects are crowded together, perhaps owing to a scarcity of food around a small but favourable feeding and breeding area, they need as few as three generations to transform into the destructive migratory phase.

Transformation is brought about by close contact with each other resulting in mutual disturbance between the insects. The solitary phase locusts are greenish in colour, whereas the gregarious forms are darker, reddish and black.

Locust swarms will consume vast quantities of greenstuff, crops and even the bark of young trees. Large swarms have been estimated as weighing several thousands of tons, and these contain millions of insects. In captivity locusts are also cannibalistic if overcrowded and with insufficient food.

In the Insectarium they are kept at a temperature of approximately 25°C, and fed daily on fresh grass and a little bran. Small pots of moist sand are provided for the females for egg-laying. It takes several days for the eggs to hatch. These tiny locusts reach maturity in several weeks. The adult males are smaller than the adult females, and are a bright yellow colour.

OFFICIAL OPENING

The sunken garden, constructed in 1973 on the site of the original "Donkey's Nest" has been named "The Queen Elizabeth II Silver Jubilee Garden." "Noah and the Four Winds," a bronze sculpture by Mr. Seán Rice, was accepted by the Society for siting in the garden. Dinah, Lady Tollemache officially opened the garden on Saturday, 11th June 1977.

The chosen subject for the sculpture is of course Biblical, and is symbolic of Animal Conservation, showing the massive figure of Noah calling on the Four Winds to quell the deluge. With the heavy downpour of rain on Saturday the English weather coincided (dare we say happily) with the event, but "Noah" and the "Four Winds" did not live up to their reputation as the rain continued relentlessly during the ceremony.

The whole fountain stands 16-ft high above water level. Supporting troughs in the form of four masks of water spirits following the



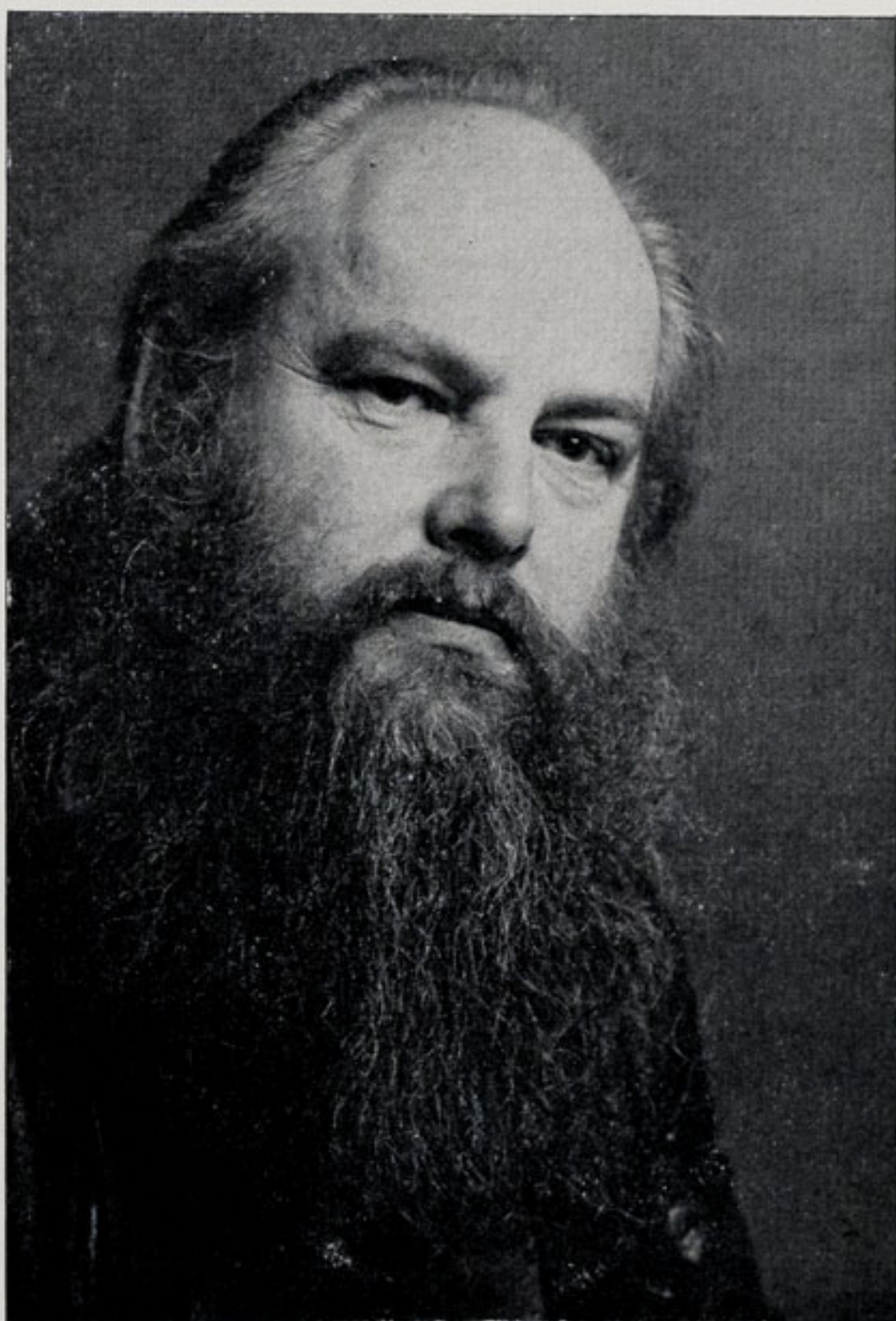
By courtesy of Reg Cox

"NOAH AND THE FOUR WINDS"
with the quarter-size maquette

direction of the four winds are about 6-ft. high and 8-ft. across. The figure of Noah is 10-ft. high and weighs well over half a ton.

A maquette, a quarter of the size of the final exhibit, was loaned to Chester Zoo so that the Society could have an idea of what would be involved in such a project.

Mr. Seán Rice won a national competition for work in the field of sculpture, and the Constance Fund allotted to him a sum of money for the purpose of executing the bronze fountain. The Constance Fund (now taken over by the Royal Society of British Sculptors) was conceived, planned and named by Sigismund C. H. Goetze and



By courtesy of Reg Cox

SEAN RICE, THE SCULPTOR

founded in his memory by his wife Constance Goetze. The North of England Zoological Society was pleased to accept the "Fountain," and agreed to be responsible for all site works necessary, together with the final lighting and installation costs. The Society will also be responsible for the maintenance of the fountain.

The sculptor worked continuously, selling his own work to provide further funds which were required for the project. Mr. Rice, Senior Lecturer to the Faculty of Art and Design at the Liverpool Polytechnic, was given a sabbatical year. He is greatly indebted to the Polytechnic for their beneficence, enabling him to fulfil his work on the creation of "Noah and the Four Winds," and to feel free to

continue his studies in the field of sculpture whilst still being officially "attached" to the Polytechnic.

QUEEN ELIZABETH II SILVER JUBILEE GARDEN

The sunken garden was created in an old pit-hole called the Donkey's Nest. Forest trees between one and two hundred years old were growing on the slopes of the pit. Trees on the lower slopes were removed and a garden was made using shade-loving plants and shrubs. Trees growing higher on the slopes were left there.

In the summer of 1972 the bottom of the pit was raised from its original depth and a concrete base was made for a pond where we kept some waterfowl. A sandstone wall was built around the pond. A path was then established continuing over a small bridge under which flows water from a waterfall cascading down some rocks. This water comes from one of our artesian wells. On each side of the waterfall there are a variety of shrubs, including six species of Mountain Ash. Varieties of Rhododendron and Azalea are growing on the slopes.

A four-foot border of a variety of shade-loving plants was established round the pond. These consisted of Hosta, and varieties of Astilbe and Primula; dotted around are Yucca and *Gunnera manicata*. It is hoped the plants *Dierama pulcherrimum*, common name Wandflower, planted recently around the water's edge will establish themselves.

A public road and part of the coach park are screened by a hedge of *Cupressocyparis leylandii*. On the zoo side the whole garden can be viewed from a footpath which has a low-cut Berberis hedge in the foreground.

The siting of the bronze fountain in the centre of the garden is of added interest and brings the whole garden to life.

SUBSCRIPTIONS

New readers of the CHESTER ZOO NEWS who would like to receive the magazine regularly may be interested to know that subscription forms can be obtained from the souvenir shops. An annual subscription (12 issues) costs £2.30, postage paid, which can either be handed over the counter at the shops or posted with the completed form to the Director-Secretary, Chester Zoo, Chester.

The following notice is displayed on several boards in the grounds
Please comply with it at all times

FEEDING OF ANIMALS AND BIRDS

IT IS AN OFFENCE for any member of the public to offer food of any description to any Animal or Bird in Chester Zoo.

This regulation is made for the sake of the health of the Animals and Birds. Since the **NO FEEDING** rule was introduced, the number of deaths has dropped appreciably and sickness due to wrong feeding has been virtually eliminated.

What you may be offering to an animal may only be a sweet or an inoffensive piece of bread, but it can mean a death sentence for the animal. For example, a cough drop, which may relieve your cough, can cause instant death to many Animals and Birds in the Zoo.

You must not lose sight of the fact that you are only one of over a million visitors who visit the Zoo annually. If for instance an elephant had one bun from only one tenth of a day's visitors during the summer, it would eat between three and four thousand. You can guess the result.

We realise what a temptation it is for visitors, particularly children, to feed our Animals and Birds and this is why we invite members of the public to be present at the official feeding times.

This is a polite warning to you, asking you not to feed the animals. If you ignore it, the Keepers are authorised to ask you to leave the Gardens.

If you really love Animals and Birds, you will appreciate the wisdom of the ruling — No feeding by members of the public.

**PLEASE HELP US TO KEEP OUR COLLECTION OF
ANIMALS NOT ONLY ALIVE BUT IN FIRST CLASS
CONDITION**

Printed in England by
W. H. Evans & Sons Ltd.
Sealand Road Trading Estate
Chester