
“Our Zoo News”

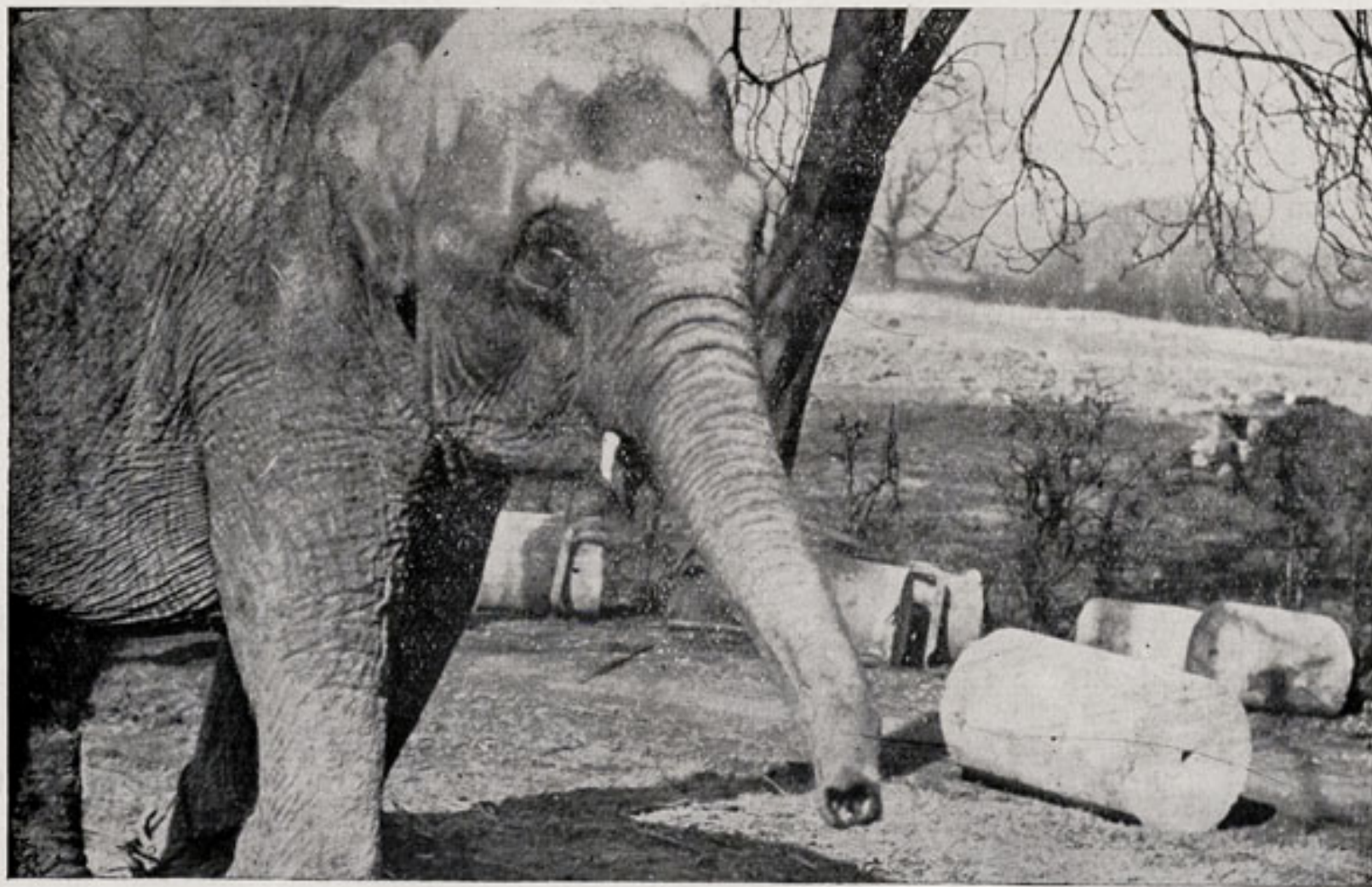
A MONTHLY CHRONICLE OF NEWS OF
CHESTER ZOOLOGICAL GARDENS.

Price 3d.

Annual Subscription 4/6 post free.

NUMBER FIFTY-THREE.

March 1945.



Molly visits the blocks. We have promised to build her a bath with these if any can be spared. This she will appreciate very much as in previous summers she has had to content herself with an ordinary wash-tub to complete her toilet.

We had hoped that much more of the alterations and improvements would have been completed by Easter but unfortunately the very wet weather of last October and November coupled with the small amount of labour available, has prevented the completion, but given nice weather this Spring we shall soon catch up with this work.

The Bison enclosure is more or less finished and the Bear enclosures are almost ready to receive the bears but the water system is not yet complete.

So many of our readers, especially those who live a distance from Chester and have not been able to visit the Zoo of late, have asked exactly what alterations are taking place and how we are using the road blocks mentioned in previous issues.

We feel, however, that work is now so well advanced that a description can be given illustrated by photographs, and we feel sure that readers will appreciate that a very great effort is being made to provide our Zoo animals with the very best accommodation.

Photograph 1 shows an entirely new roadway under construction running due north from Bison walk. This road is approximately one hundred and forty yards long elevated something like two feet six inches above ground level. On each side is a ditch so constructed to confine the animals. Trees and shrubs will eventually be planted along this roadway.

On the left-hand side of the picture where a horse and a donkey can be seen grazing is part of the Bison enclosure and on the right will be a Deer enclosure.

Photograph 2 shows Bison walk under reconstruction with the new Bear enclosures in the distance on the right. This roadway will also be relieved by trees and shrubs. The mound of earth beyond the blocks seen in the top right-hand of the photograph will be planted as an elevated shrubbery to provide shelter to the bears from the driving wind.

Photograph 3 shows the Polar Bear enclosure. On his concrete platform will be constructed rock work to provide shelter from the sun and a relief

to the flat layout. The ditch which surrounds the enclosure on three sides will be full of water in which the bears can swim.

Photograph 4 gives a better idea of the ditch. When full it will contain approximately 43,000 gallons of water.

This water is being connected to an elaborate system of aeration and filtering and will be capable of being completely changed in about twelve hours. The water from the overflow will pass over shingle filter beds to a large storage tank at the bottom of the Donkey's Nest.

When the slush requires removing from the bottom of the ditch, an extra rush of water will be released into the ditch from the Fountain Pool and the slush gate opened to allow all sediment to pass into a slush tank. The water will then pass through a filter and into the reserve tank. From here it will be pumped to the Fountain Pool which it will enter in a variety of ways one of which is a fountain and another waterfalls. From this pool the water will pass to the Bear enclosures and repeat its journey once again. The Fountain Pool will be made to look as natural as possible and this will be in what is planned out to be the Thar enclosure.

Photograph 5 is **not** a Roman amphitheatre but the bath which is provided for the Himalyan Bears and the water in this will be constantly changing.

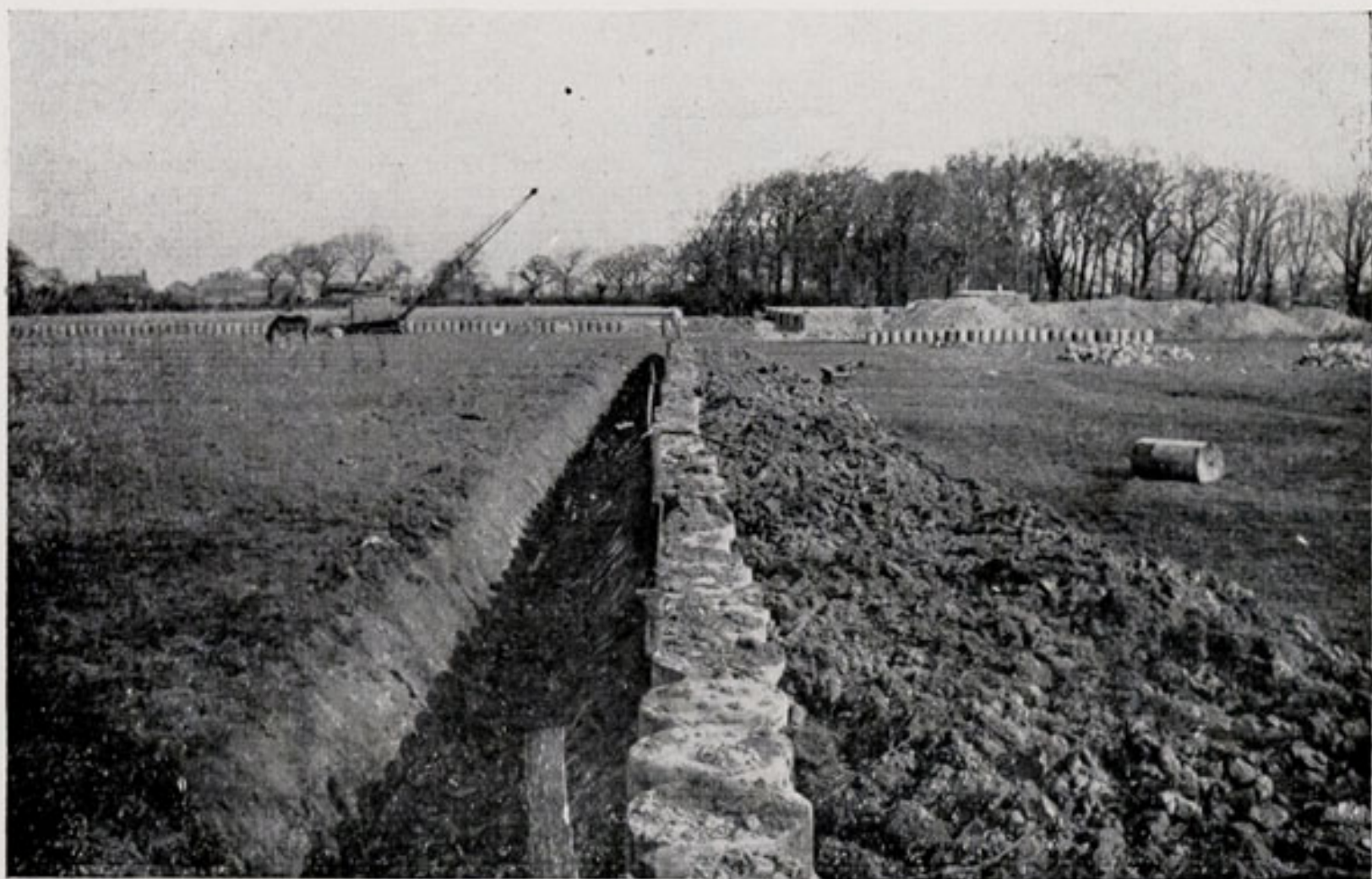
Photograph 6 gives a closer view of how the blocks are placed in position to hold up the roadway and provide a bastion against animals attempting to jump the ditch.

Photograph 7 is a bird's eye view taken from the top of the Polar Bear dens and shows part of the Polar Bear pool, in the foreground is the new roadway, on the left of which is the Bison enclosure.

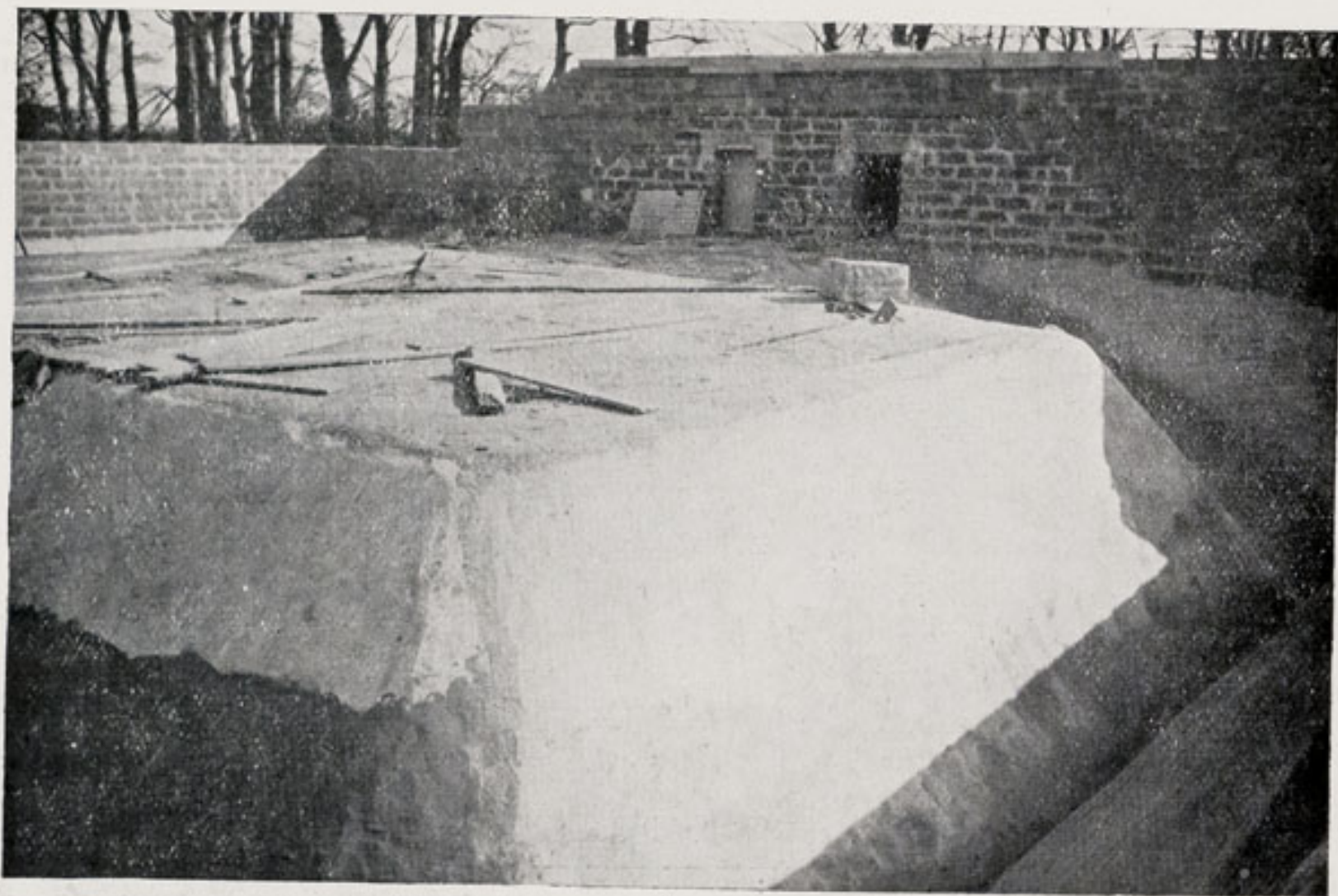
We are indebted to Mr. H. F. Parker for all the excellent photographs shown in this number and sincerely hope that he and his fellow photographers will find it much easier to photograph the animals in their new enclosures now that we have discarded bars and wire.



PHOTOGRAPH 1.



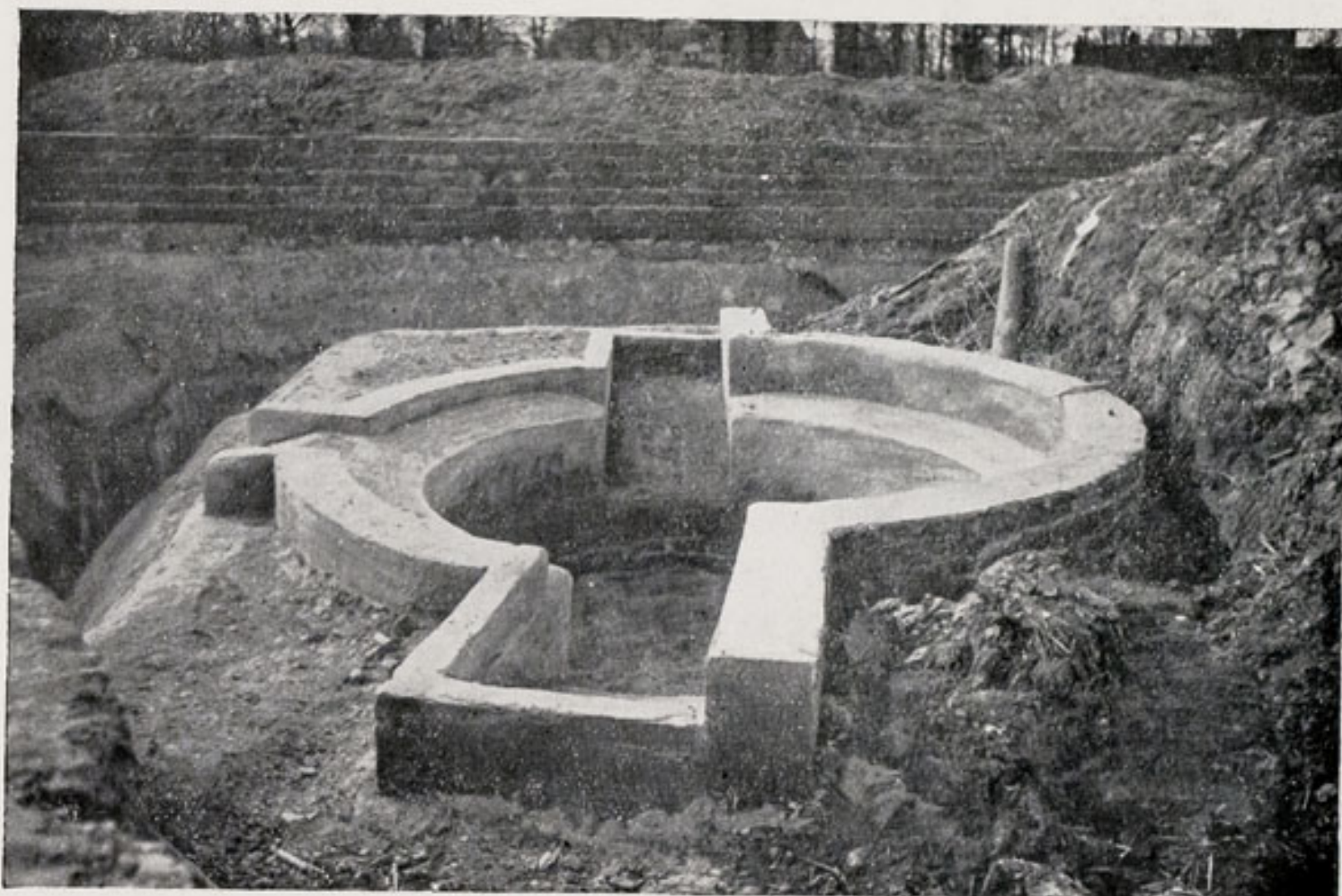
PHOTOGRAPH 2.



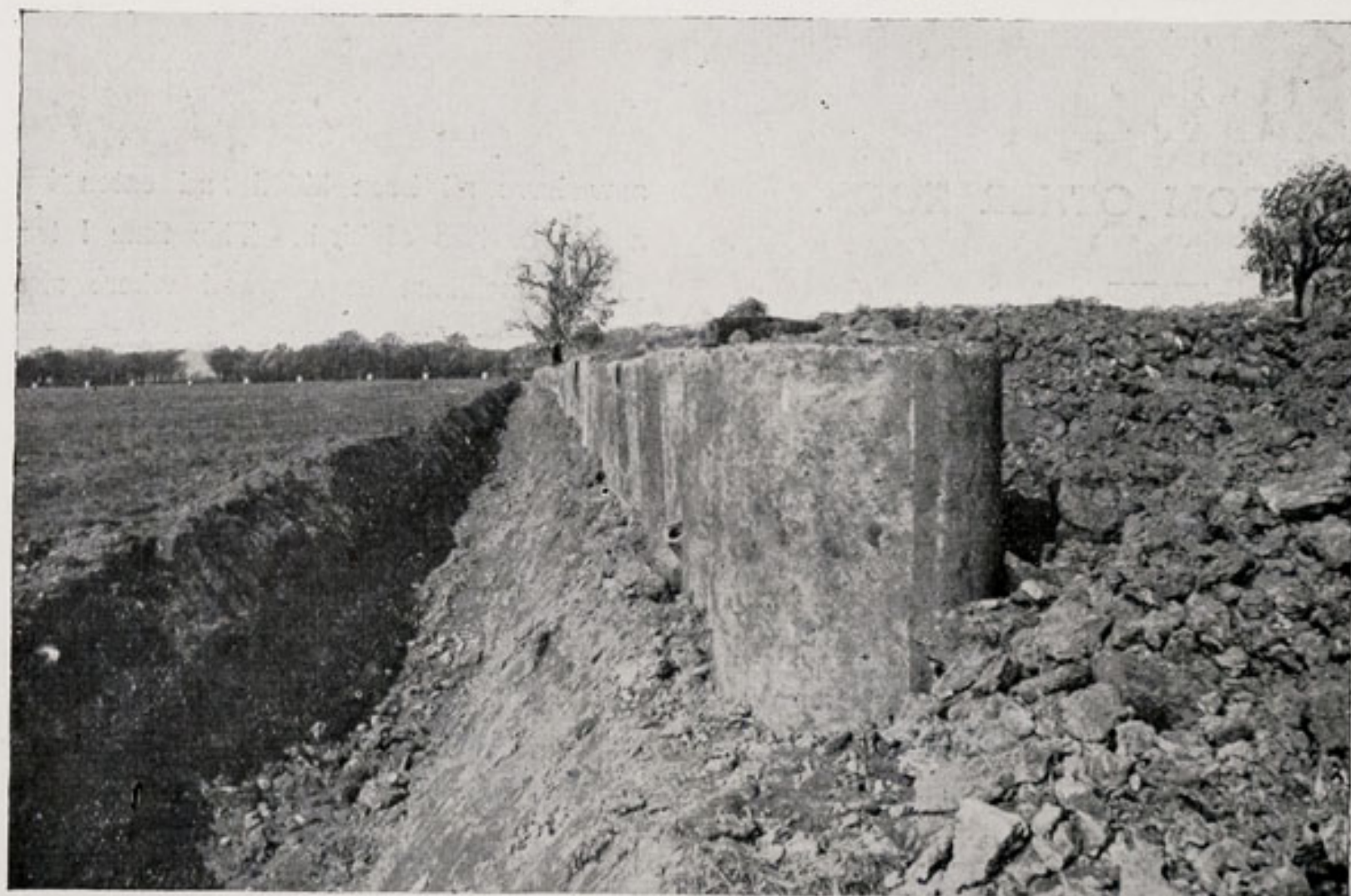
PHOTOGRAPH 3.



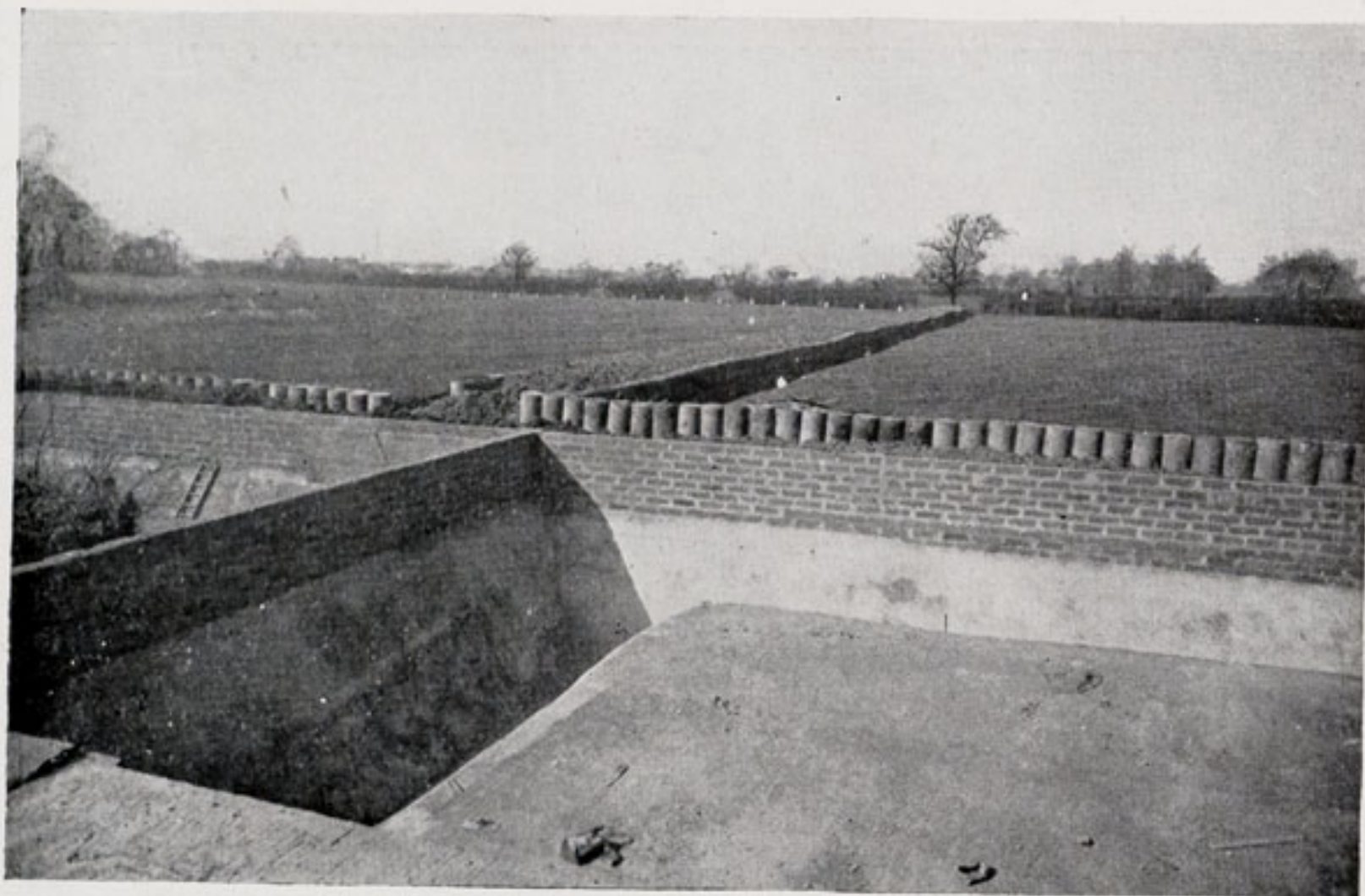
PHOTOGRAPH 4.



PHOTOGRAPH 5



PHOTOGRAPH 6.



PHOTOGRAPH 7.

NEWS FROM OTHER ZOOS.

MAIDSTONE ZOO PARK.

By Sir Garrard Tyrwhitt Drake.

By the time these notes appear this Zoo Park should be re-opened (March 18th) for the season. The "Stars" that are appearing and taking part are: Mr. Fred Emney of Stage and Radio Fame; Mr. and Mrs. Richard Hearne and Miss Sara Gregory, the Australian Film Star. The Children's Zoo will have a special opening by my God-daughter, Miss C. Hearne (aged 2½ years).

The litter of young coypus are getting on well and a litter of young half-bred wild swine have been born. The three previous litters from this

sow have all been killed and eaten by her within a day or two of birth. This time I transferred her to an enclosure in a wood where she was quiet and hidden from view; the piglets, which are all striped like young wild swine, are over a week old, so I now hope for the best.

New arrivals include a pair of young lions, a grass monkey, and fish and terrapins for the Aquarium.

CORRECTIONS.

We regret that the name of the photographer of Punch in our last issue was omitted. This was Master D. H. Brennan.

The name of the donor of the Serval Cat was inadvertently spelt Hallwood. This should have been Allwood.

A GUIDE FOR VISITORS TO CHESTER ZOO.

Upon entering the Zoo, visitors are advised to proceed straight ahead down South Drive. The first thing they will meet will be the elephant stand from which the elephant rides are given daily except on Fridays. Turning left we find the American Raccoon enclosure and on the right a large enclosure of Malayan bears. This enclosure is shortly to be renovated as soon as labour can be found to undertake the work.

Adjoining this enclosure is one containing several young wolves. These are only accommodated temporarily here and will very shortly be moved to new wolf wood at the other end of the Zoo.

From here we proceed back on to Central Drive and make our way past the cafes, where refreshments can be obtained daily. Opposite the cafes on the left-hand side to Central Drive is an open-air tea garden and behind this is the site for the open-air lion enclosure.

We have decided to close temporarily our aquarium until various alterations and improvements have taken place.

From this point we will pass on to Old Courtyard and upon entering we find on the left the Quarantine house in which will be found the young Serval and also a female Leopard. Leaving this house and crossing the yard we find on our left the Griffon Vultures and immediately by the side of these is the entrance to the Lion house where several lionesses may be found and very often some with cubs.

On leaving the Lion house a large cage faces us containing a pair of wolves which will also be moved to the new enclosure when completed. At the end of this cage is the elephant stall where Molly can be found when she is not giving rides.

At the opposite end to the wolf cage is the entrance to the Monkey house which contains several West African Monkeys and also Phyllis, an adult Chimpanzee.

Along the south wall are the Himalyan Bears and the Russian Bear, if these have not already been moved to their new enclosure. We now leave the courtyard and turn left towards the parrot aviaries which contain several varieties of parrots including some very fine talkers. Leaving these aviaries we proceed to the old Polar Bear cage which we hope the bears will have vacated for their new home by the time these notes appear in print.

We should now proceed along Bison Walk which is being reconstructed. On the left are the American Bison and it is hoped by Easter that their numbers will have increased by the addition of two young cows which have been purchased from Woburn.

Continuing along Bison Walk we will find on the left a new roadway which will run between the Bison enclosure and the Deer enclosure. Several Fallow Deer are being acquired and these, it is hoped, will make a very attractive show.

We have now arrived at the new Bear enclosure. The first will contain Himalyan Bears with an additional male which we have acquired from the Dublin Zoo, also Trotsky, the Russian Bear, will occupy this enclosure.

Adjoining this enclosure is the new Polar Bear accommodation and in it will be found Punch and Judy.

Beyond this Bear enclosure is to be found the Wolf enclosure which it is hoped will be finished in the course of a few weeks, and when completed, the roadway will lead from the Wolf wood past the Fountain Pool to an enclosure which soon will contain ornamental Water Fowl. This will bring the visitor to East Drive where he can retrace his steps towards the centre of the Zoo again.

STOP PRESS.

We have pleasure in announcing that "Faith" gave birth to three Lion Cubs on March 20th. So far mother and children are doing well.



"Cheetah," the young Serval Cat, which is now in quarantine, and which was mentioned in our last issue.