



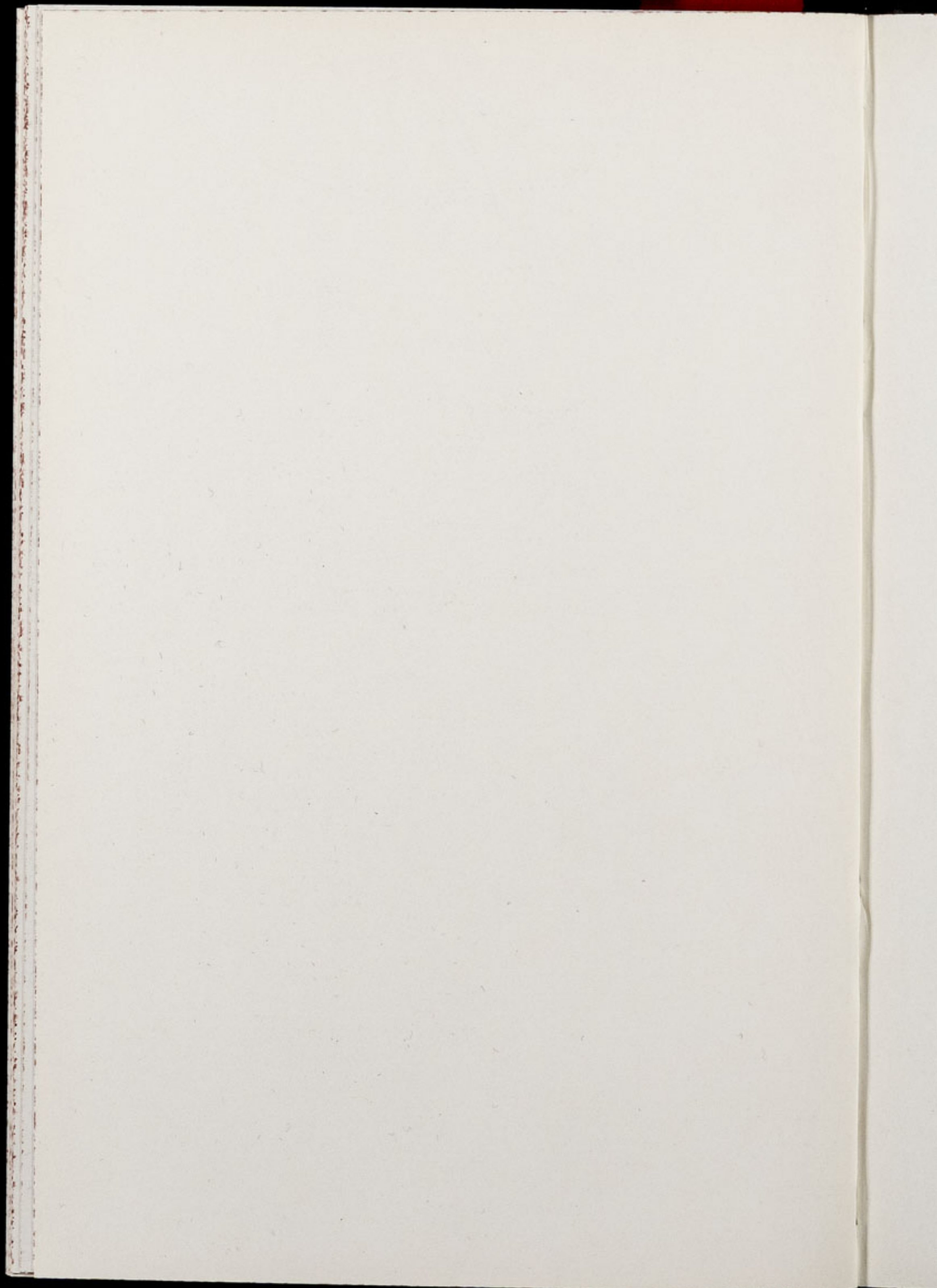
By Courtesy of Eric Kirkland, F.R.P.S.

Chester Zoo News

THE NORTH OF ENGLAND ZOOLOGICAL SOCIETY
ZOOLOGICAL GARDENS, UPTON - BY - CHESTER

February, 1963

Price 1/-



MR. G. B. GROUNSELL

It is with deep regret that we have to announce the death of Mr. G. B. Grounsell, who died suddenly on the afternoon of 24th January, 1963.

Mr. Grounsell had been Chairman of the Council of the North of England Zoological Society, continuously for over quarter of a century. He joined the Society in the very early days, when many difficulties were besetting its administration and his balanced judgement proved of valuable assistance to the Council in the following years.

He took a very keen interest in the work of the Zoo and since he was appointed Chairman he never missed one single meeting of the Council. Mr. Grounsell frequently visited the Zoo and was known to all the Staff, who regarded him with great affection.

Whenever I had to travel abroad Mr. Grounsell could always be relied upon to keep a watchful eye on the Zoo and during these periods he spent a considerable amount of his time in the Gardens. Apart from his interest in the Zoo, he was a very good friend and will be sadly missed by us all.

Our deep sympathies go to his widow, who invariably accompanied Mr. Grounsell on his visits to the Zoological Gardens.

G. S. MOTTERSHEAD.

We wish to thank the following, for permission to use the photographs included in this issue:—

R. T. Bloom, Esq.,
E. Kirkland, Esq.,
J. L. Owen, Esq.,
Mr. & Mrs. E. Sorby.

COVER: Our Cover Picture this month shows two of the Angel Fish to be found in the Aquarium.

ANNUAL SUBSCRIPTION FIFTEEN SHILLINGS POST PAID

TELEPHONE : CHESTER 20106

"JIMMY" AND "MYRA"

Our pair of Hippopotami arrived from East Africa in September 1961, when they were about half-grown and settled down very quickly in our Pachyderm House. Before their arrival a variety of tropical and sub-tropical plants had been planted around their heated indoor pool and many of these flowered most attractively throughout last year.

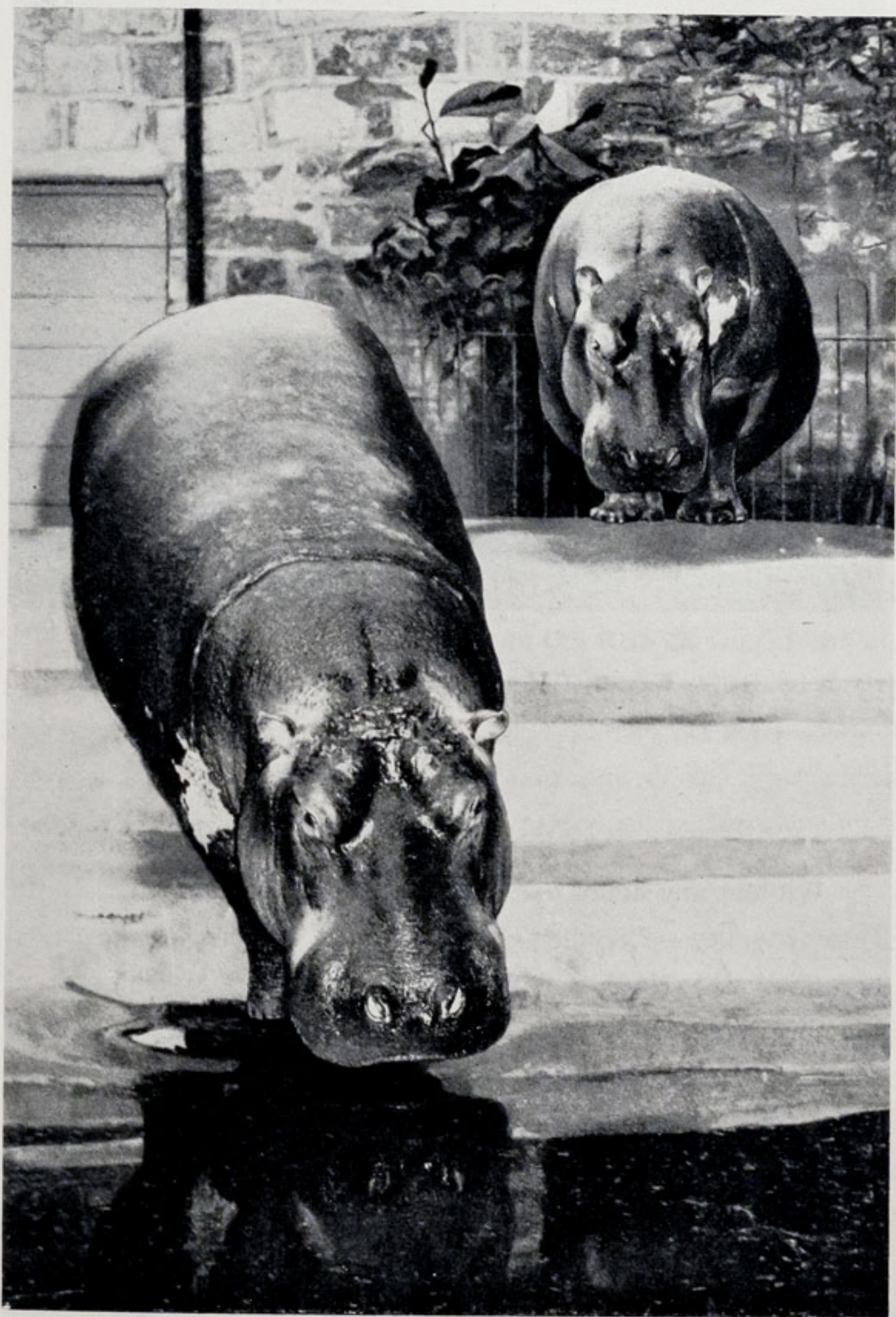
Just how effective the central heating system in the Pachyderm House has proved to be is shown by the amount of time Jimmy and Myra spend in their indoor pool, despite the weather. Outside there may be as much as twenty-three degrees of frost, but inside the Hippos still splash around with obvious enjoyment. There are no bars to disturb the visitor's view of the Hippos "water ballet," as a plate glass window runs the length of the pool. Without the window, spectators would be drenched by the spray thrown up as Jimmy and Myra roll over, submerge, butt one another underwater and generally amuse themselves.

The outside enclosures of the Hippos and Elephants are separated by a five foot wall, so that the ground level in the Hippo paddock is several feet lower than that of the Elephants. When the Hippos went out for the first time, all the Elephants gathered along the top of the wall and bellowed in the usual elephant fashion. However, Jimmy and Myra were not in the least perturbed.

After their first day out they soon found that the best place to sun themselves was just under the wall. This had one disadvantage as Rascal, one of our African bull Elephants, could easily reach them whilst they were "snoozing" and he could be seen prodding them playfully with his trunk. They did not seem to mind this, but when he took to blowing in Jimmy's ears the Hippos decided to move from the wall and took to making a large mud wallow on the side of their enclosure nearest to the public.

Jimmy was aggressive towards his Keeper at first, but after a few weeks he was soon opening his enormous mouth for the odd carrot.

Hippos are still very common in most of the lakes and rivers of Tropical Africa. They live in large herds, spending most of the day in the water and coming out to graze during the night. They are creatures of habit and nearly always use the same paths in and out of the water and these are sometimes worn into deep gullies where, for centuries, hundreds of Hippopotami have trampled down the earth.



"JIMMY" AND "MYRA"

Mr. & Mrs. E. Sorby



J. L. Owen

"SOLDIER"

PATAS MONKEY

Without any doubt our healthiest and hardiest monkey is the Patas Monkey — "Soldier." (Last month, incorrectly, we called him "Sailor.") He lives the whole year round on his half acre of island, without any form of heating and, for the most part, he even shuns his snug sleeping box.

He was introduced to the island in June, 1959 and, together with several young female Patas Monkeys, they made a wonderful show. The island is part of our canal system and some of the smaller monkeys soon discovered that, by first jumping onto the roof of a passing waterbus, they could reach the mainland shore quite easily in two leaps. For their sins, or should we say agility, they had to be confined to a cage.

When the winter of 1959 came, all the remaining young monkeys had to be removed to warmer quarters and Soldier remained alone and apparently quite unworried by the cold. Even when hard frost froze the canal, he seldom left his island and would only cross the ice if his Keeper was a little late delivering his food. With this years prolonged and extremely hard winter and as a result of the escapade reported in last months magazine, we have taken him into indoor quarters until the weather improves.

Patas Monkeys, when fully grown, are powerful, long-legged animals, well adapted to their terrestrial life. They roam the open plains and savannah country, ranging from North West Africa, right across the continent to parts of Eastern Africa. As is to be expected with such a large range, they are divided into many local races, possessing local names, such as the Red Dancing Monkey, the Soldier Monkey, the Red Hussar and others. All these names refer to the handsome red colour of the fur and a peculiarly characteristic habit of jumping, or dancing up and down. Each cheek bears a large tuft of grey hair, which further accentuates the almost military appearance of the animal.

In the wild they live in fairly large troops, travelling about the plains in a continuous search for food. They pick up any insects, fruits or vegetation that they find and pounce eagerly on any small snakes, lizards, small rodents or eggs, etc., that they may come across. As the troop progresses, several of the monkeys will make for a tree and keep a look out for danger. At the first sign of alarm the whole troop hurries away at great speed, making off across the plains, rather than seeking the shelter of trees.

NEW ARRIVALS

The first Zoo babies of 1963 are a female Ankole calf and two Himalayan Bear cubs.

EFFECTS OF THE COLD WEATHER ON THE GARDENING SECTION

At the time of writing we are experiencing a spell of very severe weather — it has been with us now for more than a month and no end to it is in sight.

We have experienced varying night temperatures of from 14° to 20° Fahrenheit, with very little let up during the day. Although the deep snow causes considerable inconvenience, we are thankful for it in the gardens, as it affords excellent protection from the severe frosts for the plants and shrubs. Because of it we are not expecting to have many losses.

This weather does, of course, upset the routine work of the gardens and causes delay in proceeding with the proposed landscape work which we have in hand. However, it does give an opportunity to do quite a few jobs, which in normal conditions we perhaps would not find time to do — such as cleaning out dead wood and leaves from under established shrubberies, clearing undergrowth from the Gibbon Island, etc.

Some years ago, belts of trees and shrubs were planted to afford wind breaks, to give the animals protection from the very cold winds which we experience here during the winter. These have really grown at a tremendous pace. The trees now form a complete barrier against the wind, which has enabled us to remove the laurels and privets from underneath the trees — thus giving visitors a clear view of the Gibbons, Zebras, Giraffes, etc., from the roads and waterways.

The plants and climbers in the animal houses are being given their annual pruning and overhaul. This entails a considerable



R. T. Bloom

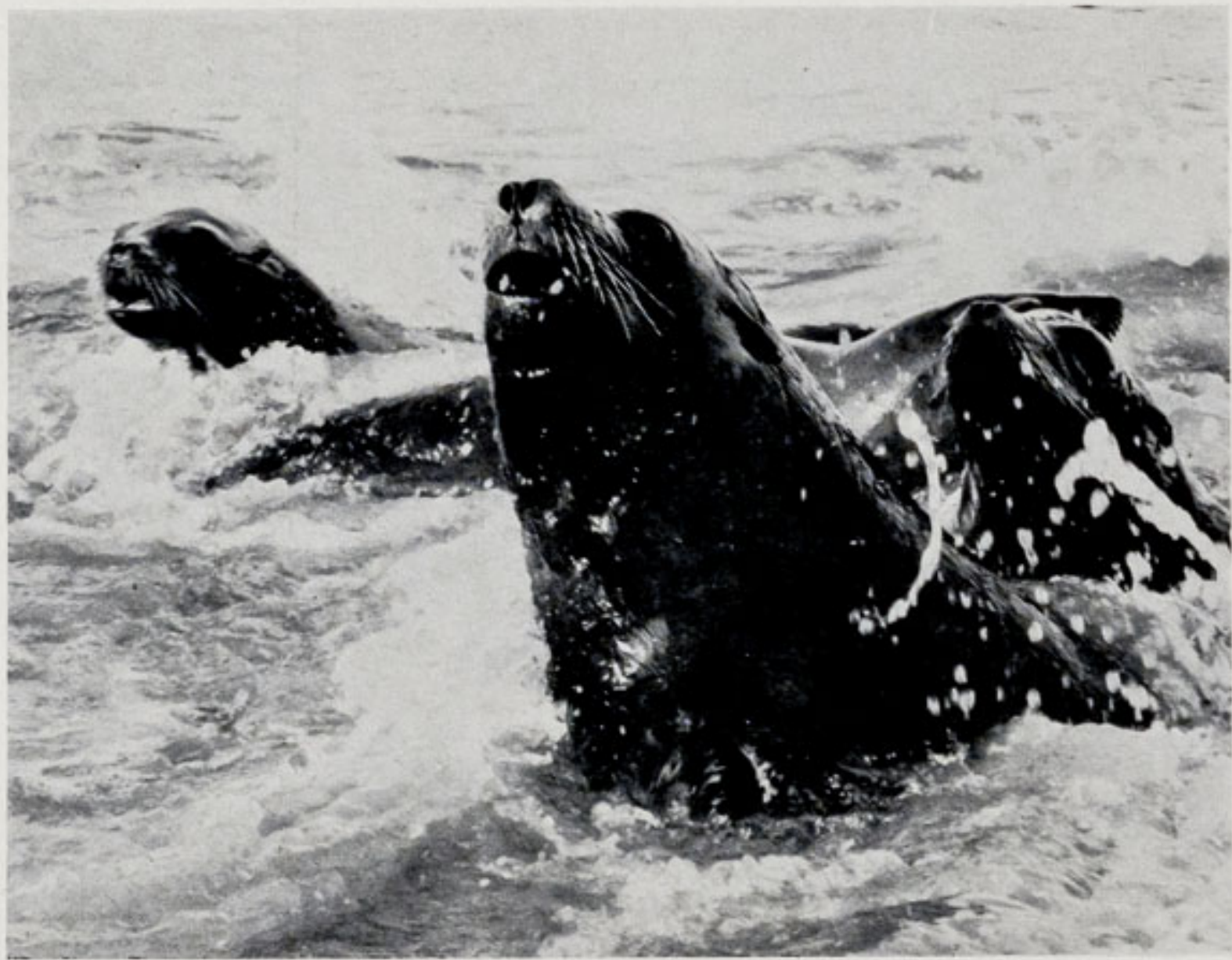
A CORNER OF THE GARDENS

amount of work and while conditions are against general gardening outside, we have the time to proceed with this work. The top dressing of new soil for the beds and borders in these houses will be carried out in February, when root action again becomes active.

In the nursery, the Greenhouses are being washed, seed boxes prepared — in fact everything is being put in readiness to give us a clear start for the busy time which is approaching in this department.

Severe frosts are always a worry to anyone with the responsibility of looking after greenhouses and at a time like this almost continuous stoking is required, as the heating boilers must be kept at full capacity.

Photographs taken during the prevailing cold spell



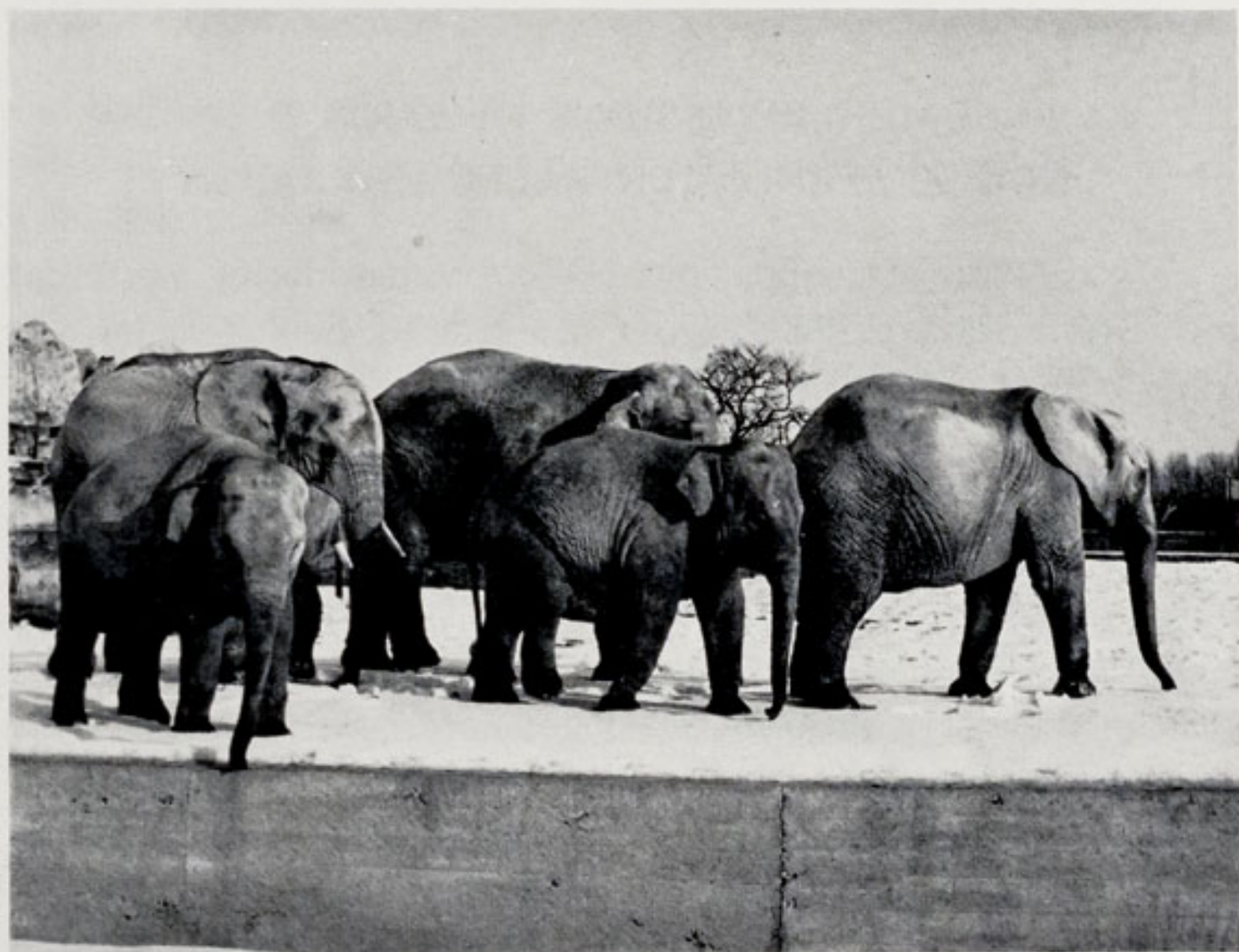
Mr. & Mrs. E. Sorby

"SAMMY" AND FAMILY ENJOYING AN ICY SWIM



Mr. & Mrs. E. Sorby

"HENRY" — PERE DAVID DEER



Mr. & Mrs. E. Sorby

ELEPHANTS IN THE SNOW



R. T. Bloom

FROSTY SCENE IN THE CAMEL PADDOCK

SOME IMPRESSIONS OF ZOOS IN NEW ZEALAND, AUSTRALIA AND JAPAN

To continue my impressions of Zoos visited during my recent trip — after leaving San Diego I flew out to New Zealand and whilst there I visited the country's two Zoos.

Wellington Zoo was obviously very well cared for, but the shortage of animals, or at least what we call Zoo animals, was rather disappointing. I appreciate that there is some difficulty in importing wild animals into New Zealand but I thought it was a great pity that this problem could not have been overcome, by a city which is the capital of the country. The site of the Wellington Zoo was, I feel, a trifle bleak and open, but nevertheless the animals were in excellent condition.

Later I visited the Auckland Zoo. Here I was agreeably surprised that, whilst there was not the great variety of wild animals one would find in a European Zoo, there was quite a good collection in fine condition. I was very impressed with the Zoo's cleanliness — which I think is one of the most important aspects of Zoo-Keeping.

Auckland Zoo has a delightful setting, which is enhanced by a small river running through the grounds. This natural watercourse has made it possible to show some of the animals in much more natural conditions than is usual in Zoos. The Hippopotami in particular, being river animals, are very effectively displayed. I understand that the Auckland Zoo has been extremely successful in breeding these animals — they certainly looked very fine.

A number of the cat enclosures were very impressive, particularly those which were devoted to Pumas and Leopards. These are not easy animals to keep in large enclosures as they must, for safety's sake, be covered in. Here these cats had plenty of space and rock work which helped to give them sufficient exercise. I would suggest that should the heavy iron bars to these enclosures ever require

renewing, they be replaced by strong netting. This is only a small point, but it would remove the prison effect, which I think bars have a tendency to create.

Another group of animals which interested me, was that of the Bison and Llamas all living amicably together in one enclosure.

The Zoo itself I thought a delightful place, with great possibilities, and it is a great pity that the restrictions on the importation of animals prevents Auckland from having a more representative collection. I was especially pleased to visit this Zoo, because Mr. Derek Wood, the Superintendent, was employed at Chester Zoo prior to taking up this appointment in New Zealand.

After leaving New Zealand I visited Taronga Park in Sydney, Australia, where I had a most wonderful reception and saw some really attractive exhibits.

Their collection of Giraffes — thirteen in number — made a most impressive display and I must congratulate Taronga Park on their success in breeding these animals. I understand that they all originated from one pair. It was unfortunate that the cold winds from Sydney Harbour necessitated a concrete wind break to protect the animals. A wind screen of armour-plated glass would have enabled visitors to look beyond the Giraffes to the beautiful harbour.

Of course there was a very representative collection of Kangaroos — all in wonderful condition. Whereas in most Zoos you find two or three Kangaroos, they appeared to be exhibited here by the dozen.

The collection of Koala Bears made another attractive exhibit. I liked very much the way these shy and retiring animals were displayed, so that they were not hidden from the public view.

Taronga Park's seven Gorillas were a sight worth seeing — they looked in first-class form. I was also particularly pleased to see a baby Orang-utan, which was being handreared by Bill Timmis — a former Keeper at Chester Zoo and now in charge of Taronga Park's Gorillas.

There appeared to be a lot of work in progress and the construction of a new Reptile House was well under way. I am looking forward very much to revisiting this Zoo in 1964, when the nineteenth Annual Conference of the International Union of Directors of Zoological Gardens will be held in Sydney.

My next stop was Japan and what a country of contrasts this is. On my second day in Japan I visited Uneo Zoo. Here there was a very large collection — to my mind too large for the amount of ground which was at the disposal of this city Zoo. The cramping of so many specimens into such a small area, had the effect of detracting from their general appearance.

On the following day I was taken by the Director to a new Zoo in the Tama Hills. Here I think they have probably the most wonderful site for a Zoo that I have ever seen. It is very extensive and well-wooded and has, to my mind, practically everything which a Zoo would require in the way of diversity of landscape. Of course it is only in course of building and a great deal still remains to be done.

Excellent roadways have already been laid down throughout the Zoo and this facilitates the enormous amount of work they have in hand.

The African Plain Section, which is under construction, should, when completed, be a really wonderful sight. Visitors will be able to drive into this enclosure by train and view numerous African animals in a truly natural setting.

If this Zoo is developed as I understand it is to be, it should in time be one of the outstanding Zoos of the world.

The foremost impression of my trip was the extreme cordiality of the reception extended to my wife and myself, by the staff of all the Zoos we visited. Our sincere thanks go to all those responsible for such generous hospitality. Now we are looking forward to welcoming members of the International Union of Directors of Zoological Gardens to Chester in September.

AQUARIUM NEWS

With the advent of February, the coming of the new season is more apparent and greater efforts are made to improve the collection. This is a month of changes, when a fresh look is taken at the entire Aquarium and possible improvements are noted.

February also sees the trickle of imported fish turning into a veritable flood, as the weather improves. Sudden and exciting appearances of rare specimens cause periods of intense activity, in which our entire collection is re-shuffled, to make room for new arrivals.

The following weeks will prove of great interest, not only to the public, but also to the people behind the scenes. It is in these weeks that experiments have to be made regarding methods of housing and feeding and we have to ensure in this time, that all new specimens are thoroughly settled in, before the arrival of summer visitors in the Gardens. This is particularly important when dealing with the more delicate varieties of fish, which will expire with monotonous regularity if they have not grown accustomed to crowds of people moving around, occasionally banging the tanks and generally causing a disturbance.

This month it is hoped to start adding to the collection some of the more spectacular varieties of fish, most of which, being carnivorous and growing to at least a foot in length, will require separate tanks. If available, such specimens as Snakeheads, Piranhas, Spiny Eels, Botias, Loaches, large Cichlids and many more will be added to the freshwater, tropical section. It is hoped that many interesting specimens will also be added to our marine section, which we intend to extend as soon as possible. The cold water section will also undergo a change and better ways of displaying the collection will be thought out.

In short, therefore, it is hoped that this year both in number and variety, the entire collection will exceed all former proportions and will not only provide entertainment for everyone, but will also be a practical source of knowledge for the serious student of ichthyology.

PENGUINS IN THE SNOW

As you will see from the photograph on the opposite page, our four King Penguins which, with the exception of the Emperor Penguin, are the largest species of their family, are entirely at home in the arctic conditions experienced at Chester this winter. It is indeed only natural that they should be, since they are natives of the Antarctic.

It would be wrong, however, to think of all Penguins as living under such conditions. Of the dozen or more different species, four come from the coasts of Australia and New Zealand, two from the west coast of South America and one from South Africa. This difference in environment is very clearly shown by the difference in behaviour in cold weather, between our King Penguins from the Antarctic and our little Humboldt's Penguins from South America.

The Kings revel in snow and ice, look in far better health than in the summer and would be quite happy to stay out-of-doors day and night in these conditions. In fact we shut them in a shelter at night, not to protect them from the weather, but from foxes. The South American Humboldt's, on the other hand, heartily disapprove of the British winter and as soon as it gets really cold, they disappear into their breeding cave, refusing to come out even for their herrings, which have to be taken to them.

Incidentally, an interesting point in the feeding of Penguins is that, whereas the Humboldt's will pick up their fish from land or in the water, the Kings will make no effort to pick up food and, as many of you will have seen, have to be hand fed by their Keepers.

Some species of Penguin will attempt to breed in captivity, but to rear the chicks to adulthood is quite an achievement. We have been successful in the past but last year, although the two King Penguin pairs laid, incubated and hatched out a chick each, in both cases, due to accidents, the chicks were not reared.

These birds lay a single egg, which they incubate resting on their feet and covered by a flap of skin — rather like a Kangaroo's pouch in reverse. The egg takes about fifty three days to hatch and both cock and hen incubate.

The Humboldt's Penguins also laid and incubated — in their case a clutch of two. Unfortunately both eggs were broken only a few days before they were due to hatch. We are hoping for better luck with the breeding of both species of Penguin in 1963.



KING PENGUINS

J. L. Owen

A FEW FACTS AND FIGURES

One of our subscribers suggested that readers might be interested to hear how Zoo attendance figures have increased in recent years.

The North of England Zoological Society is now in its twenty-ninth year of operation and from eleven thousand, six hundred and eleven attendances recorded in its first year, the figure is rapidly approaching the one million mark.

1935	...	11,611 visitors	1955	...	499,565 visitors
			1956	...	527,489 visitors
1949	...	319,423 visitors	1957	...	528,399 visitors
1950	...	414,714 visitors	1958	...	643,680 visitors
1951	...	451,675 visitors	1959	...	785,351 visitors
1952	...	458,565 visitors	1960	...	841,940 visitors
1953	...	449,844 visitors	1961	...	982,183 visitors
1954	...	447,589 visitors	1962	...	929,296 visitors

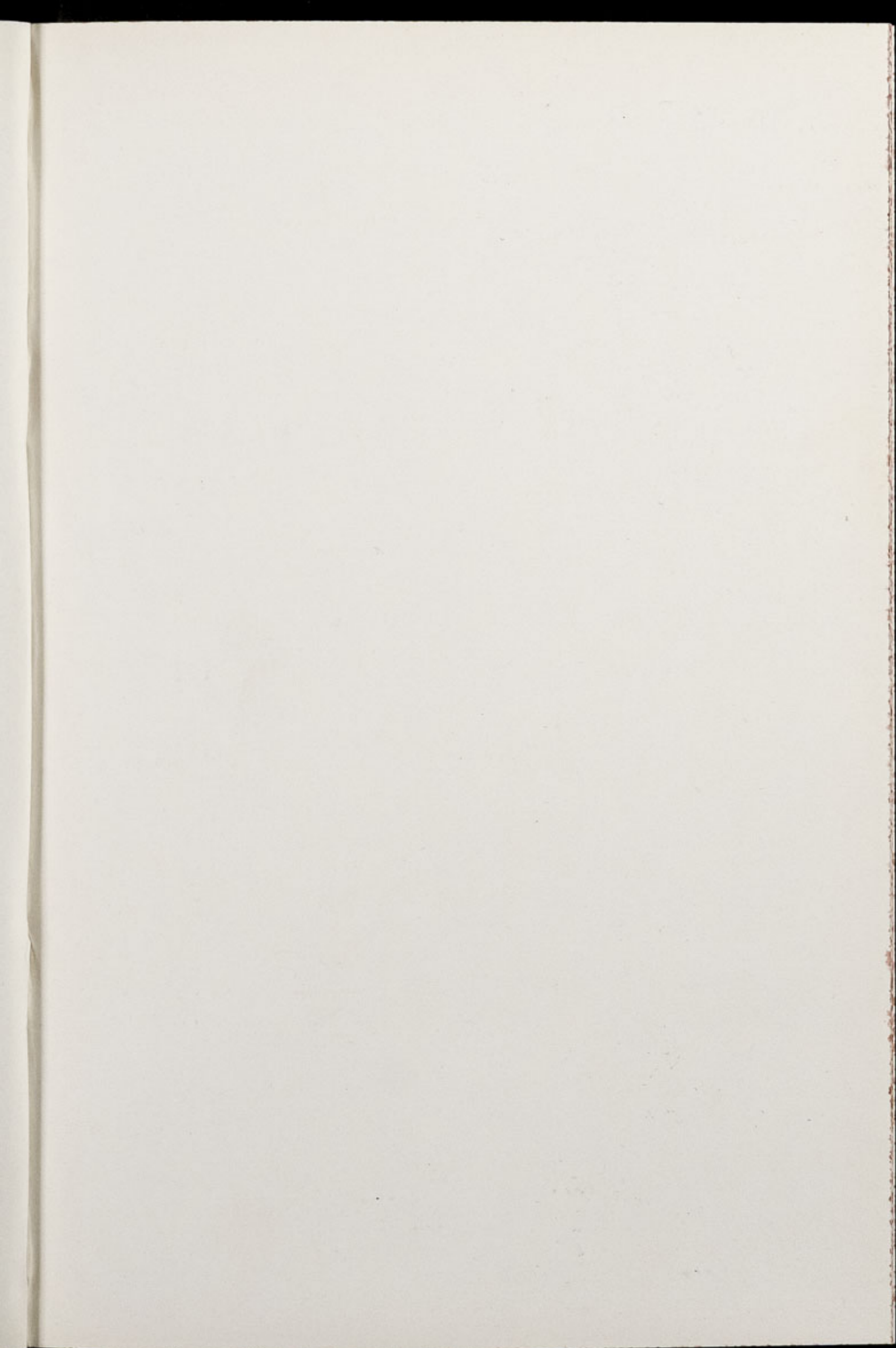
As you will see from the table, the popularity of the Zoological Gardens is firmly established. Of recent years 1962 was the first to show a decrease in attendances — thanks to a more than usually wet British summer. Given the correct weather conditions, we confidently forecast that 1963 will see attendances topping one million.

Chester Zoo is, of course, open daily throughout the year as follows:

March to October	9-0 a.m. until dusk.
November to February	10-0 a.m. until dusk.

It is an amazing fact that such is the popularity of the Gardens, there has not been one day throughout this incredibly severe winter when we have had no visitors at all.

At the commencement of the Society in May, 1934, the admission charges were one shilling for adults and sixpence for children. Today these charges are three shillings for adults and one shilling and sixpence for children. This is not a large increase when you compare the prices of yesterday with those of today and consider that the Zoo of 1934 had a very small collection in an area of approximately ten acres, whilst today Chester Zoo contains one of the largest collections in Britain and covers an area of one hundred and fifty acres.



Printed in England by
G. R. Griffith Ltd.
Castle Printing Works
Chester
