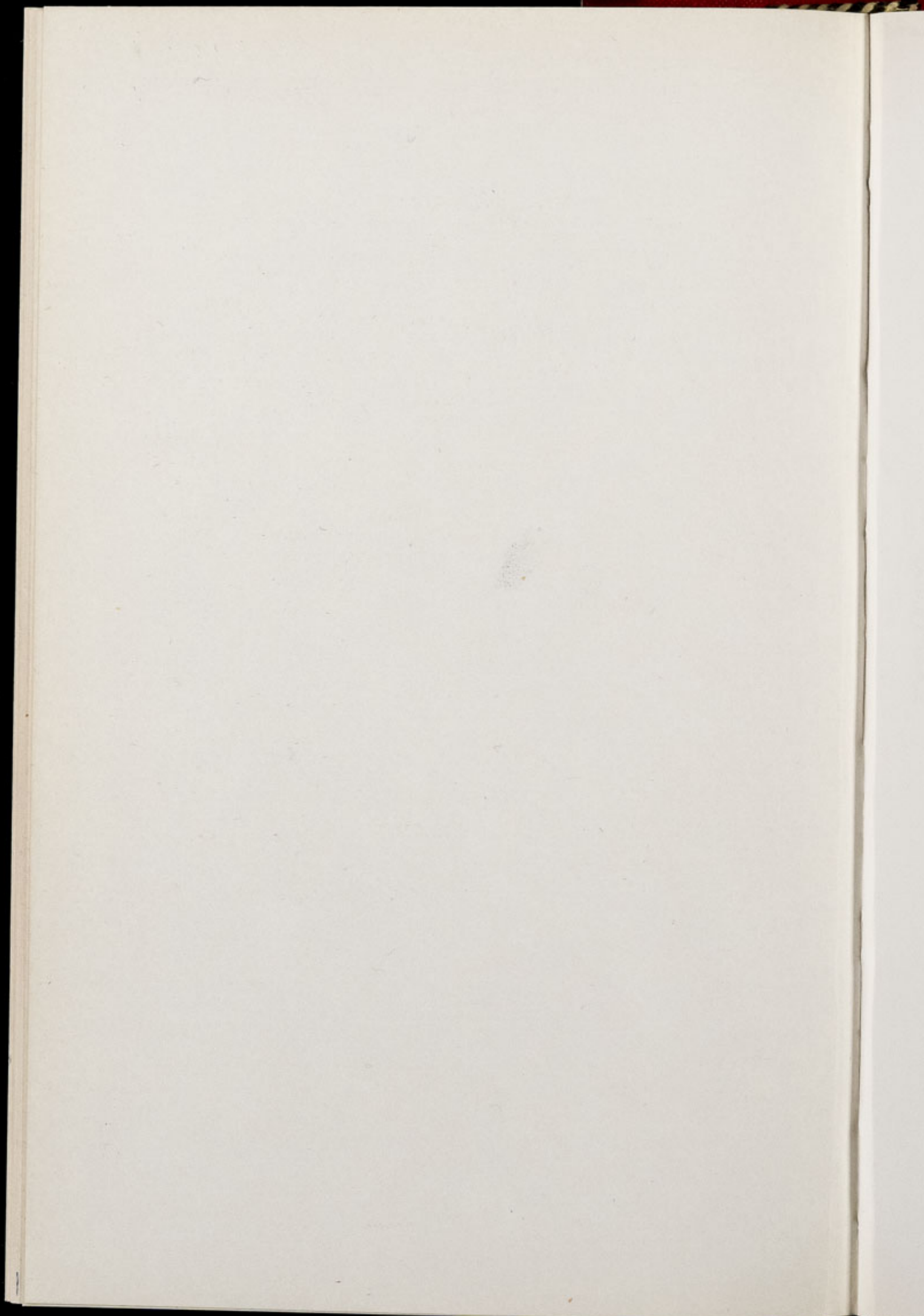


# **CHESTER ZOO NEWS**

## ***AND GUIDE***

September 1980

Price 15p



# North of England Zoological Society

ZOOLOGICAL GARDENS, UPTON-BY-CHESTER

## COUNCIL

PROF. J. O. L. KING, Ph.D., M.V.Sc., B.Sc(Agric.), F.R.C.V.S., F.I.Biol.  
G. R. PRYOR, C.Eng. (Vice-Chairman) (Chairman)  
J. N. WILSON  
F. MOSFORD  
H. D. COOPER, F.I.M., A.I.B.  
A. J. BLAND, Dipl.Arch.R.I.B.A.  
R. P. OWEN, A.R.I.C.S.  
MRS. B. H. IRVINE  
F. S. CARSON, M.C., B.A.(Cantab.)  
DR. J. E. D. CHARLES-JONES, M.B., B.S., M.R.C.G.P.  
DINAH, LADY TOLLEMACHE  
W. KELSALL, O.B.E., Q.P.M.  
DR. J. R. BAKER, Ph.D., B.V.Sc., M.R.C.V.S.  
L. C. YOUNG, B.Sc.(Econ.)  
I. YULE, E.R.D., J.P.  
DR. M. R. BRAMBELL, Ph.D., M.A., Vet.M.B., M.R.C.V.S. (Director)

## CONTENTS

<i>page three</i>	Hand-Rearing a Bennett's Wallaby
<i>page five</i>	Toco Toucan
<i>page seven</i>	Aquarium News
<i>pages eight/nine</i>	Zoo Guide
<i>page ten</i>	Margay
<i>page fourteen</i>	Latest News
<i>page fourteen</i>	Latest Births and Arrivals.

## ILLUSTRATIONS

<i>page two</i>	Bennett's Wallaby
<i>page four</i>	Toco Toucan
<i>page six</i>	Cowfish
<i>page eleven</i>	Freshwater Stingray
<i>page thirteen</i>	Wildebeest
<i>page fifteen</i>	Coypu

## COVER

Margay

*By courtesy of John Doidge*

---

Annual Subscription — Three Pounds, postage paid  
Telephone Chester 20106



*By courtesy of Kevin Fitzpatrick, Daily Mirror*

BENNETT'S WALLABY

### HAND-REARING A BENNETT'S WALLABY

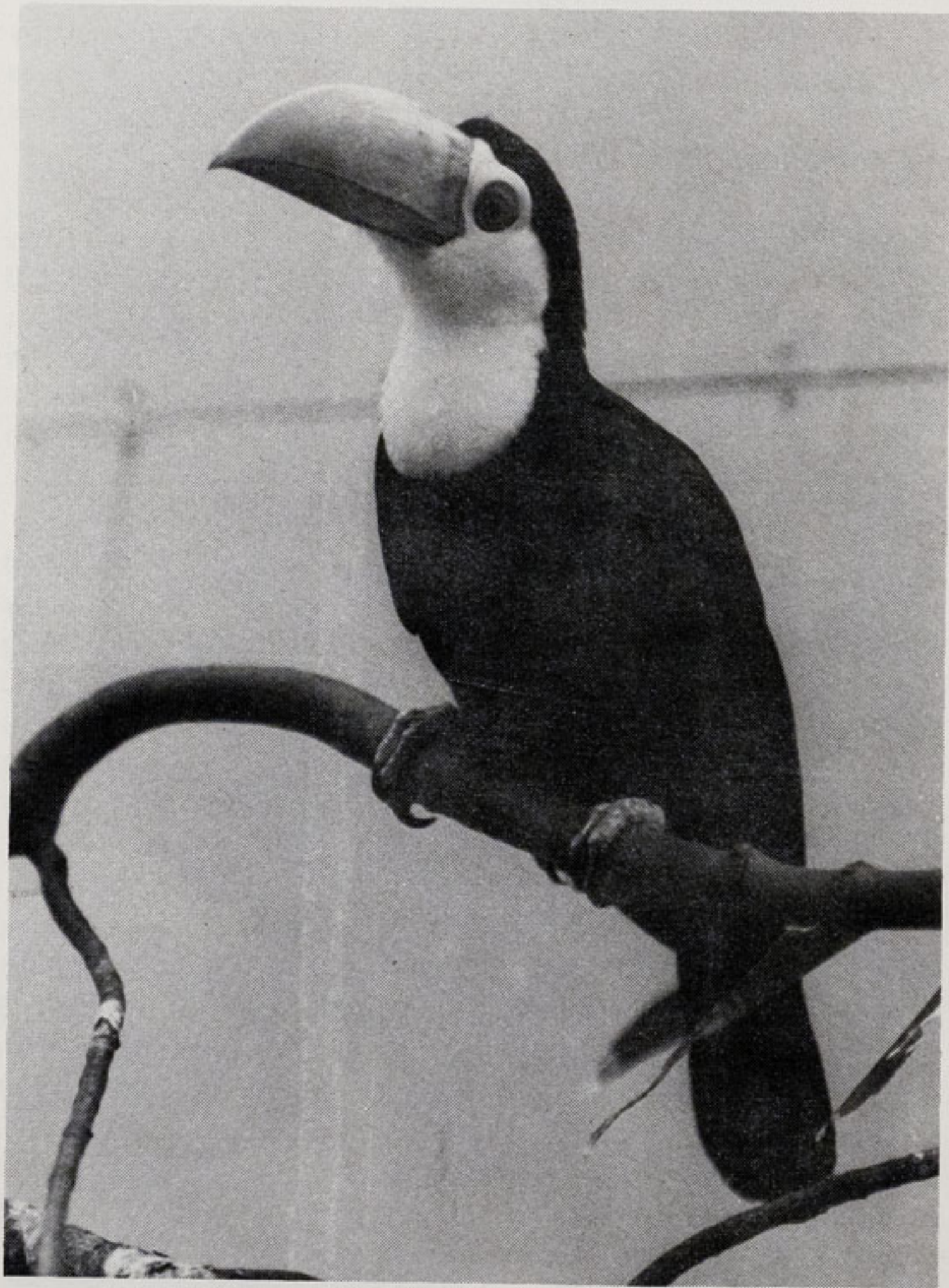
On the 12th April this year, a female Bennett's Wallaby was found dead in its enclosure. When the pouch was examined, it was found to contain a female joey, which was still alive. It was removed for hand-rearing.

The youngster weighed approximately one pound and had a very sparse covering of fur. Seven small meals were fed to the Wallaby between 6.00 a.m. and 11.30 p.m., using a syringe, modified by a small plastic tube being fitted to the end. Each consisted of 20 mls. of warmed cow's milk supplemented with Farex, one teaspoonful of Glucodin and two drops of Multivitamins per cup.

At first she was kept in a cardboard box which was fitted with an electric bed-warmer (a metal container which holds electric light bulbs) at the bottom. At this age the young Wallaby would be unable to react if it got too hot, and could easily be burned—so great care had to be taken to keep it warm enough without cooking it! A few woollen sweaters with arms sewn up were provided as a suitable pouch, giving the baby the extra security which is essential at this stage of its life.

After several days, the joey began to take various kinds of solid food in small amounts. Oats, bran, a small amount of grass, fruit and vegetables were taken readily. Brown bread was also eaten. The type of food had to be chosen carefully to try to prevent "scouring"—the name given to diarrhoea in animals. Scouring can easily kill young animals. Some scouring did occur, but it was controlled by treatment with a mixture of antibiotics and Kaolin and the youngster was back to normal within a day. For the first week the youngster had to be stimulated to defaecate, after which it defaecated normally.

After a week on solid foods, she was weighed and had gained half a pound. The solid food intake was gradually increased, whilst the milk feeds were slowly reduced.



*By courtesy of K. W. Green, A.R.P.S.*

YOUNG TOCO TOUCAN

When she grew too big for the cardboard box, larger quarters, fitted with the warmer, were set up in the corner of the living-room. She was let out into the living-room for exercise by lowering the front of her new box. She would play with the dog, which became quite friendly with the stranger—until the Wallaby nibbled her tail! However, the youngster still required a lot of sleep and would often climb into the sweater on my lap, where she was quite happy to stay until feed-time.

At the start of May, the Wallaby was seen to be able to lap the milk from the end of its bottle, so these feeds were discontinued and, instead, a dish of milk was provided.

By about the fourth week in May, the youngster, named "Serena", was fully weaned and was house-trained to defaecate only in her own quarters, and not in ours! She weighed four pounds. At a later date she will be re-introduced into the group of Bennett's Wallabies.

Alan Woodward.

*Mr. Woodward has been a Keeper at Chester Zoo for seven years.*

## TOCO TOUCAN

There are about 40 species of Toucan living in the forests of South America. One of the most popular is the Toco Toucan (*Ramphastos toco*), which is the largest of the genus *Ramphastos*. This bird has a distribution from Guyana through Brazil to Paraguay. The plumage is largely black, but relieved by brighter colours around the throat, breast and tail areas. The bill is very large and, in the Toco, is orange; other species have bills coloured from black right through to vivid shades of reds, greens and yellows, which show up in striking contrast to the black plumage.

The diet of this large Toucan is varied and consists of fruit, insects, spiders, and sometimes eggs; small birds and lizards are also eaten. Their Zoo diet is pretty much the same, consisting of a wide range of fruit and some meat.



LONG-HORNED COWFISH

*By courtesy of K. W. Green, A.R.P.S.*

Nests are made in tree holes. The clutch of two to four eggs is incubated by the male and female in turns, and the chicks hatch after approximately 16 days. The youngsters are helpless, blind and naked and may remain in the nest for anything up to 50 days.

We have received two into the collection and these can be seen in the Tropical House, Zoo Guide No. 36. This is the first time we have had this species in the collection since 1977.

### AQUARIUM NEWS

Various improvements have recently been made to the Aquarium. It has been given a fresh coat of paint and Aquarium Keeper Michael Crumpler has been hard at work establishing a Tropical Marine Section. This means we are able to exhibit fish from all the different types of water to be found as follows:-

- Tropical Marine;
- Tropical Freshwater;
- Cold Water Marine;
- Cold Water Freshwater.

A further type of tank which is being established is a Brackish Water Tank. The brackish water is approximately half salt-water and half fresh-water, and this is to house a particularly unusual specimen, the Four-Eyed Fish, which we have not had at Chester before. Each eye is split into two sections, therefore enabling the fish to see both above and below. The tank has been prepared in such a way that the visitors will be able to observe this fish both above and below water-level. These fish are from South America.

Also received were specimens of Wrasse and Blenny, and a Cowfish. A picture of a Cowfish is shown on page six. These fish are extremely unusual, as they are rather box-like in shape; they are related to the Box Fish and they have an external skeleton like that of a beetle. As can be seen from the picture, the name is derived from the horns on the head.

# CHESTER ZOO

THE NORTH OF ENGLAND  
ZOOLOGICAL SOCIETY  
ZOOLOGICAL GARDENS

FOR A COMPLETE TOUR OF THE ZOO — Follow Nos 1-116 from South Entrance  
or Nos. 16-116 from North Entrance then return to Nos 1-14

**Chester Zoo is Open Daily  
from 10a.m.**



TO LECTURE HALL (Private)

CAR PARK

CAR PARK

C Road  
Warrington  
Manchester  
Whitchurch  
and South →

Bus Station

South Entrance

Birkenhead  
Chester  
Manchester & South

**1. SOUTH ENTRANCE**

- 2. Peacock Enclosure
- 3. Wapiti Paddock
- 4. Raccoon Enclosure
- 5. Aviaries
- 6. Milk Bar
- 7. CORONATION HALL
- 8. CLOAKROOM, FIRST AID, TOILETS, INVALIDS' TOILETS, MOTHER AND BABY ROOM
- 9. CAFETERIA
- 10. Picnic Lawn
- 11. Ornamental Garden (under construction)
- 12. Jubilee Gardens (Noah)
- 13. Kiosk
- 14. AQUARIUM
- 15. NORTH ENTRANCE
- 16. PUSH CHAIRS, WHEEL CHAIRS, LOST CHILDREN
- 17. PARROT HOUSE
- 18. Free Flight Aviary
- 19. APE HOUSE
- 20. Shop and Kiosk
- 21. Aviaries and Picnic Lawn
- 22. CLASSROOM
- 23. TOILETS
- 24. TUATARA EXHIBIT
- 25. Peccaries
- 26. Birds of Prey Aviaries
- 27. Condor Aviary
- 28. Wild Dogs
- 29. Animal Enclosure
- 30. Porcupine Enclosure
- 31. Coypus
- 32. Beavers
- 33. Giraffe House

- 34. Camel House
- 35. Giant Tortoise Paddock
- 36. TROPICAL AND REPTILE HOUSES
- 37. CHIMPANZES
- 38. Floribunda Rose Garden
- 39. Zebra House
- 40. Waterfowl Island
- 41. H.T. Rose Garden
- 42. Aviaries
- 43. Flamingos
- 44. Waterfowl Enclosure
- 45. Site for new Penguin Pool
- 46. Site for new Penguin Pool
- 47. Site for new Penguin Pool
- 48. Seallions
- 49. Rock Garden
- 50. Polar Bears
- 51. Big Cat Enclosure
- 52. Waterfowl Enclosure
- 53. Capybara
- 54. BIRD HOUSE
- 55. FOUNTAIN RESTAURANT
- 56. Animal Exhibit
- 57. TOILETS
- 58. Lions
- 59. SOUVENIR SHOP
- 60. TOILETS
- 61. OAKFIELD RESTAURANT & G. S. Mottershead Memorial Gds

- 62. P.O. Telephone
- 63. Gibbons
- 64. Arctic Fox Enclosure
- 65. Serval Enclosure
- 66. Ornamental Rock Garden
- 67. Wallabies and Kangaroos
- 68. Kangaroo Enclosure
- 69. Paddock
- 70. Cheetahs
- 71. WATERBUS BOOKING OFFICE AND KIOSK
- 72. Rose Gardens
- 73. Fountain Flower Gardens
- 74. Rose Garden
- 75. Red Lechwe
- 76. Red Lechwe
- 77. Deer or Antelope Enclosure
- 78. Zebra and Deer Enclosure
- 79. Zebra and Deer Enclosure
- 80. Brown Bears
- 81. ELEPHANTS
- 82. Hippos
- 83. Tapirs
- 84. Small Mammal House
- 85. Waterfowl Enclosure
- 86. Ankole Cattle
- 87. Emus, Cranes and Flamingos
- 88. Outside Monkey Enclosures
- 89. Baboon Pens
- 90. Cat House
- 91. Tiger Enclosures

- 94. Reindeer Enclosure
- 94a. Llamas
- 95. Antelope Paddock
- 96. Antelope Paddock
- 97. Waterfowl Enclosure
- 98. Waterfowl and Axis Deer
- 99. Waterfowl Enclosure
- 100. Blackbuck
- 101. Wallabies
- 102. Ostrich
- 103. Wallabies
- 103a. Animal Enclosure

**Facilities**

**WATERBUS.** Enjoy a trip around the Zoo. Tickets available at Waterbus Kiosk (No. 71 on plan).  
**PUSH CHAIRS AND WHEELCHAIRS** can be hired near the NORTH ENTRANCE (No. 16 on plan).  
**LOST CHILDREN** are taken to building No. 16 on plan.  
**FIRST AID** Cloakroom (No. 8 on plan).  
**TOILETS.** Invalids' Toilets (No. 8 on plan).

**Catering (subject to revision)**

OAKFIELD RESTAURANT (Table Licence)—No. 61 on plan.  
FOUNTAIN RESTAURANT (Party Catering)—No. 55 on plan.  
CAFETERIA (Self Service)—No. 9 on plan.  
MPILA SNACK BAR (Light Meals)—No. 114 on plan.  
RAINBOW KIOSK (Picnic Lawn adjoining)—No. 20 on plan.  
Wet weather facilities for visitors wishing to eat their own food are provided at the CORONATION HALL No. 7.  
Snack Bars and Picnic Lawns are situated throughout the ZOO

**Feeding Times**

LIONS—3 p.m. except Fridays  
SEA LIONS—3 times daily—2.30 p.m.—3.30 p.m.—4.30 p.m.

ANIMALS MAY BE MOVED FROM TIME TO TIME

A new Sea Anemone has been received. This is a different type from those we already have, but the Clown Fish have taken to it, swimming through the gently-waving tentacles. The Sea Anemone eats fish, but the Clown Fish is covered in a mucus; if the mucus were to be removed, the Anemone would treat the fish like any other, sting it and devour it.

An attractive fish known as a Foxface has recently arrived. This has a black and white striped head and a yellow body. It appears to have been a little upset during transit, as the body is a mottled colour at present. As soon as the fish has had time to accustom itself to its new surroundings, the original body colour will return.

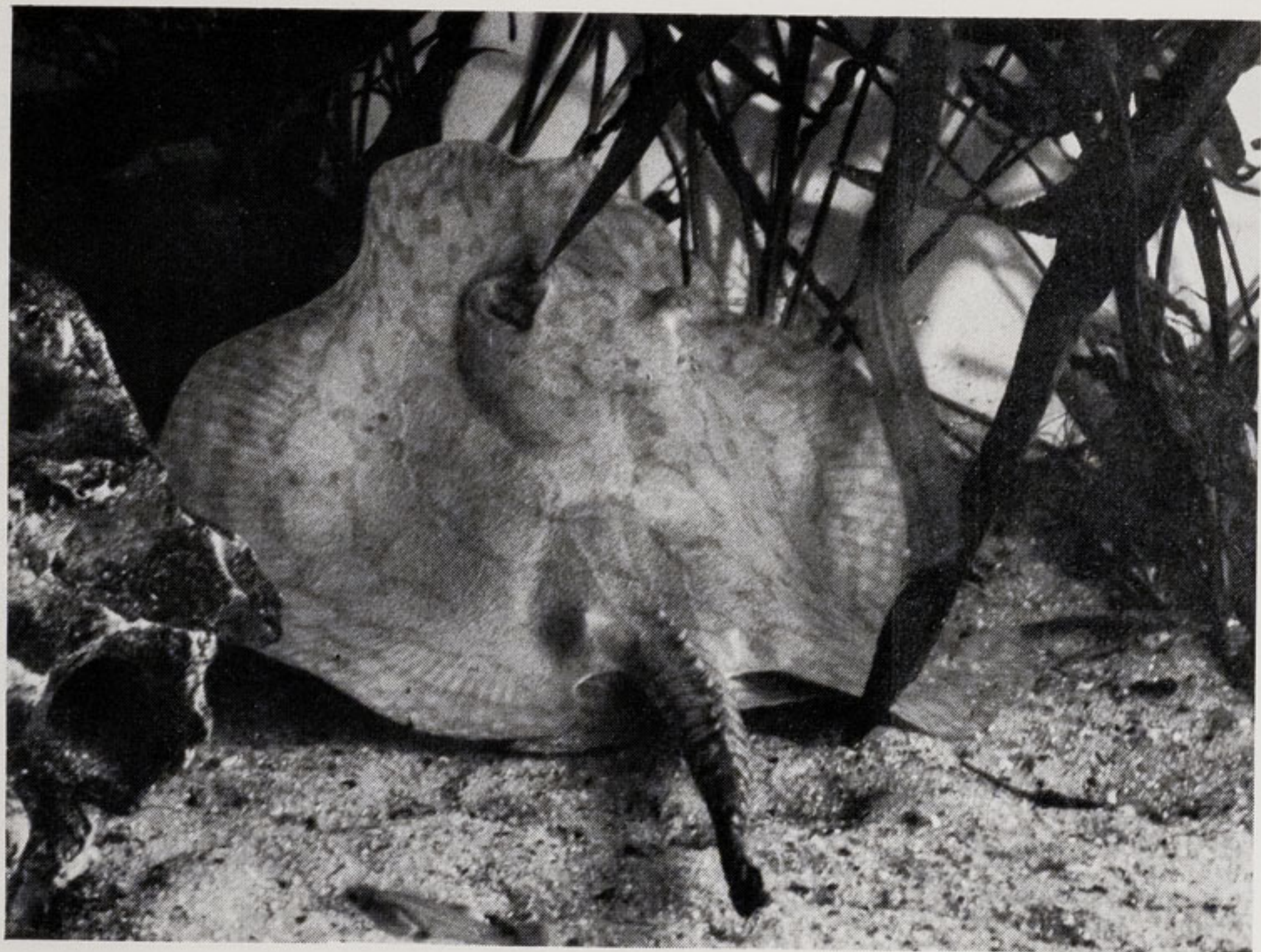
A pair of Freshwater Stingrays have also been received, bringing our total to five. A picture of one of these strange animals is shown on page ten. Another unusual specimen is the Scorpion Fish, of which there are a number of different species. They usually reach about eight inches long in captivity but can be very much larger in the wild. The dorsal spines contain a toxin which can cause a very painful wound in a human being. These fish are a most unusual shape and are attractively marked with vertical chocolate-brown stripes on a creamy white background.

Michael Crumpler would be pleased to hear from anyone who could give him additional information on the keeping of Freshwater Stingrays and Four-Eyed Fish. Details on all aspects, including water, feeding and behaviour, would be most helpful.

### MARGAY

Chester Zoo is fortunate enough to be able to exhibit a large number of cat species, and this has given us the chance to acquire some really interesting ones. In 1979, we received a pair of Margay from Regent's Park; at that time there were only about a dozen in the country.

This little, handsomely-marked cat is extremely agile, having an acrobatic ability almost akin to a monkey. It has been seen to hang on one back leg from a swaying clothes-line while manipulating food in its front paws. It is utterly fearless in its



*By courtesy of K. W. Green, A.R.P.S.*

FRESHWATER STINGRAY

jumping and will frequently leap at random without any apparent expected place to land. When doing this, it sticks out all four paws and, as soon as one touches a branch, it is able to scramble into the trees without the slightest trouble. One of the reasons it is able to do this is that it can rotate its hind-quarters through 180 degrees as well as being able to turn its hind-paws so that they face backwards. The very long tail also helps the cat to perform its feats of agility. It is almost totally adapted to life in the treetops. This adaptation may be the explanation of the fact that it competes for food with two other closely related cats which share the same range—the Ocelot (*Felis pardalis*) and the Oncilla (*Felis oncilla*). As so often happens when several closely related species share the same habitat, it is found they are actually feeding in different niches.

In the wild, the Margay ranges from Texas to Northern Argentina and is nowhere common throughout its distribution. The habits of this cat in the wild are little known, but, according to the Garani Indians, it is largely diurnal and feeds mostly off the birds it catches in the treetops. It is likely that it also catches small and medium tree-dwelling mammals and probably lizards as well.

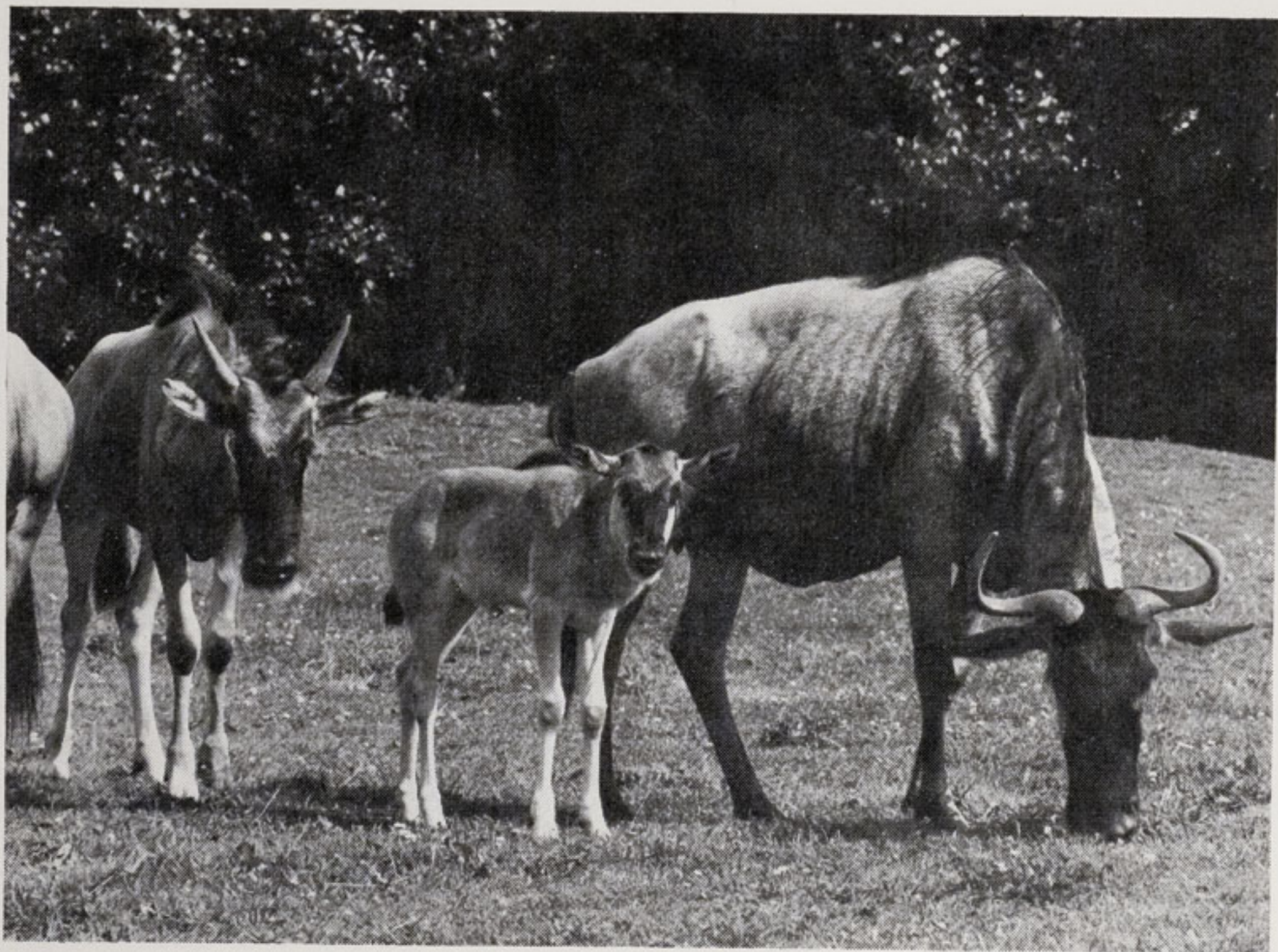
Breeding appears to take place at all times of the year, there being no real seasons in the tropical forests. The single young (twins are rarely known) is born after a gestation period of 83 to 85 days; it weighs around six ounces and in 18 days doubles its birthweight. The kitten opens its eyes at approximately 14 days and at around eight weeks it starts to eat solid food. The full adult weights of approximately 7 lb. for the female and 11 lb. for the male are reached at eight months and 20 months respectively.

The Margay retains its kitten-like appearance throughout its life—a curious parallel with Man, who looks like the young of other primates. It is one of the most adaptable cats.

In 1981 our pair of Margay will be mature and we hope that this interesting little cat will join the list of those which have bred here. Our cover picture shows one of our Margay.

Richard Green.

*Mr. Green has been a Keeper at Chester Zoo since May 1978.*



*By courtesy of K. W. Green, A.R.P.S.*

WILDEBEEST (Enclosure No. 93)

### LATEST NEWS

We are pleased to report the birth of an African Crested Porcupine (*Hystrix cristata*); this is the first time that we have bred these animals at Chester Zoo. We also have a pair of Indian Crested Porcupines (*Hystrix indica*). These animals may be seen in Enclosures 46 and 36 respectively.

The Porcupines are the largest of the spiny mammals and an adult may weigh about 45 lb. and reach up to three feet in length. The body is well made and the legs are quite long. The coat is dark brown and the back has a thick scattering of quills, which may be as much as one foot in length.

It is commonly believed that Porcupines "shoot" their quills at enemies when threatened. This, however, is a fallacy. The Porcupine will shake its tail and vibrate the quills as a warning; if this does not deter the attacker, the Porcupine will suddenly run backwards; if the attacker does not flee, it will find itself "speared" by the very large spines, which stick in the victim and are left behind when the Porcupine quickly moves forward again.

The youngsters, of which there may be up to four in a litter, are born in burrows or caves, where pairs or groups of Porcupines live. The babies will not leave the burrow until their spines have hardened: this may take about two weeks. When more than one baby is born, they usually come at intervals of ten minutes to a quarter of an hour. The young are very advanced at birth and, if there is a delay of an hour or more between the first of the litter and later ones being born, the older ones will kill the younger ones as strangers.

The diet consists of bulbs, roots, bark and fruits, which are searched for at night.

### LATEST BIRTHS AND ARRIVALS

#### Mammals

1 Nilgai ( <i>Boselaphus tragocamelus</i> )	Birth
1 Fallow Deer ( <i>Dama dama</i> )	Birth
1 African Crested Porcupine ( <i>Hystrix cristata</i> )	Birth



*By courtesy of K. W. Green, A.R.P.S.*

COYPU (Enclosure No. 31)

**Birds**

5 Rheas ( <i>Rhea americana</i> )	Hatched
2 White-crested Laughing Thrush ( <i>Garrulax leucalophus</i> )	Hatched
1 Golden Pheasant ( <i>Chrysolophus pictus</i> )	Presented
1 African Grey Parrot ( <i>Psittacus erithacus</i> )	Presented
4 Chilean Tinamous ( <i>Northoprocta perdicaria</i> )	Purchased
2 Slender-billed Conure ( <i>Enicognathus leptorhynchus</i> )	Purchased
2 Toco Toucan ( <i>Ramphastos toco</i> )	Purchased
2 Lesser Patagonian Conures ( <i>Cyanoliseus patagonus</i> )	Hatched

**Reptiles**

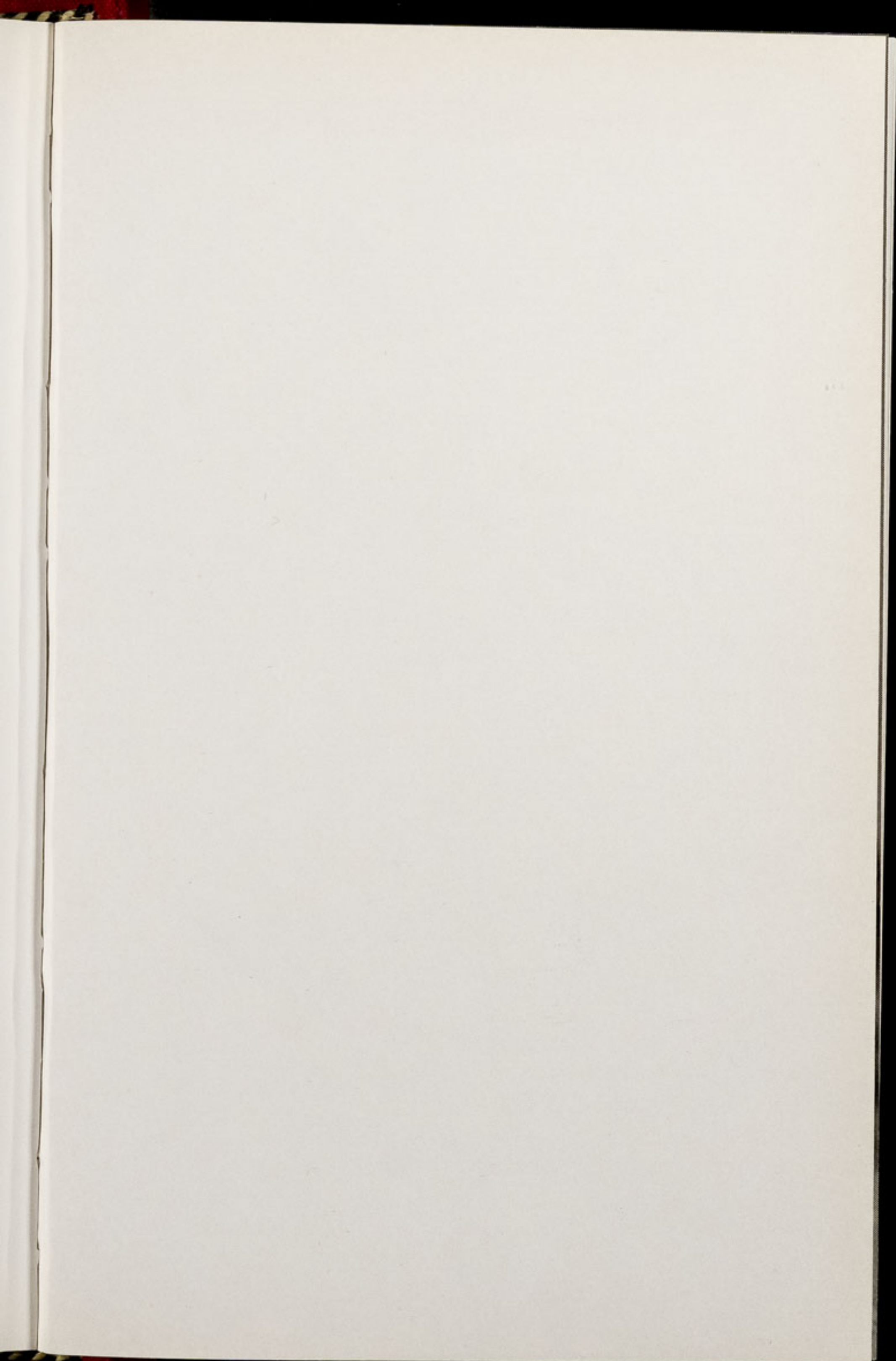
2 Common Iguanas ( <i>Iguana iguana</i> )	Purchased
1 Common Iguana ( <i>Iguana iguana</i> )	Exchange

---

**SUBSCRIPTIONS**

CHESTER ZOO NEWS is at present being produced every month and readers who would like to receive the magazine regularly can obtain subscription forms at the Souvenir Shops, or the Office. The current charge for 12 issues, including postage, is £3.00 per year.

Completed forms can be handed in to the Souvenir Shops or posted to Mrs. Sandra J. Elliott, Chester Zoo News, Chester Zoo, Chester CH2 1LH.



Printed in England by  
W. H. Evans & Sons Ltd.  
Sealand Road Trading Estate  
Chester