



By Courtesy of K. W. Green, Esq., A.R.P.S.

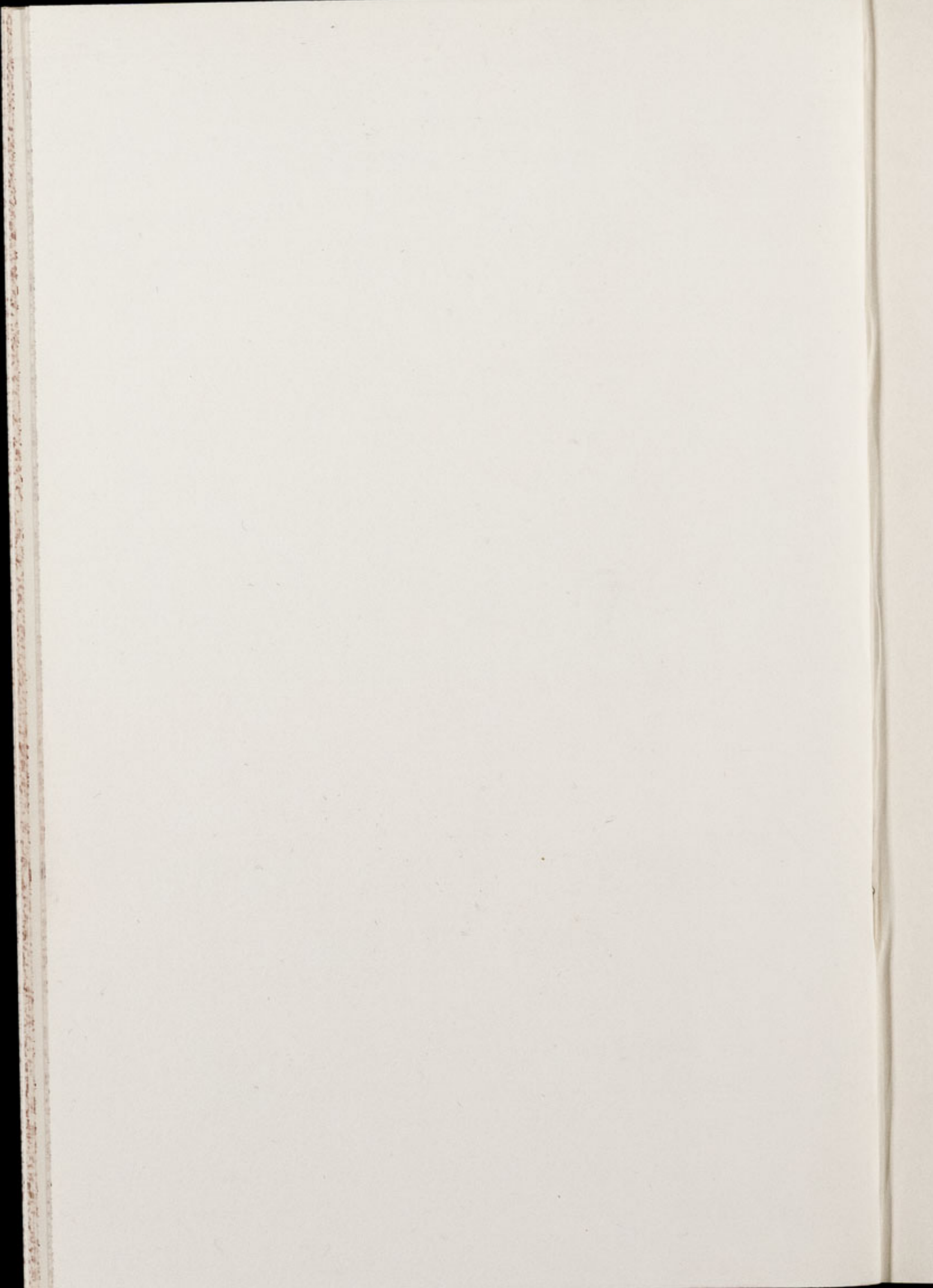
Chester Zoo News

AND GUIDE

THE NORTH OF ENGLAND ZOOLOGICAL SOCIETY
ZOOLOGICAL GARDENS, UPTON - BY - CHESTER

May 1966

Price 1/-



Editorial

We regret that we are late once again with "*Chester Zoo News*"; this was caused by shortage of staff. We are making every effort to overcome this and beg our readers' indulgence.

Many young animals can be seen in the various enclosures and we are especially pleased with the three Père David's Deer and two Bison all born during the past month.

CONTENTS:

<i>page two</i>	Arrivals.
<i>page four</i>	Births.
<i>page six</i>	Zoo Directors' Conference. Bird Notes.
<i>page eight/nine</i>	Zoo Guide.
<i>page ten</i>	Jaguars.
<i>page twelve</i>	Garden Notes.
<i>page fourteen</i>	Hatchings.
<i>page fifteen</i>	Advice on Pet Birds.

ILLUSTRATIONS:

<i>page three</i>	Keeper Pauline Tingle feeding Orang-utans.
<i>page five</i>	Bison Calf with Mother.
<i>page eleven</i>	Male Jaguar.
<i>page thirteen</i>	Cattlya, from the group of Orchids flowering in the Tropical House.
<i>page sixteen</i>	Bateleur Eagle.

COVER: This month's cover photograph shows our three Père David's fawns.

MAMMAL ARRIVALS

Only a few mammals have arrived over the past month, the most spectacular of these being a young pair of Orang-utans, which were flown over from Borneo.

These animals were received from Mr. and Mrs. Harrison of Sarawak Museum, who are working so hard to save the Orang-utan from threatened extinction.

The two Orangs called "Kimbu" and "Martha" have not as yet been introduced to our other four Orangs but are accommodated in a glass-fronted enclosure in the Monkey House to protect them from the Public.

"Kimbu", the male who is eighteen months old was found after artillery fire on the Indonesian border, presumably left by a frightened or injured mother and was then about two weeks old. "Martha", the female has been in captivity since September 1965; she was then estimated to be thirteen months old but her case history is still under investigation.

We are very pleased that these animals arrived in such excellent health after the long journey. Two members of the Zoo Staff collected them by car from London Airport and brought them by road on the final leg of the journey.

A young Ocelot was flown over from South America and was collected by Zoo Staff at Ringway Airport. We estimate this youngster to be a year old and he is accommodated in the Cat House.

Ocelots are found in forest areas of Central and South America and their spotted and striped patterning renders them almost inconspicuous in their natural habitat. This beautiful fur has one disadvantage: man finds it most useful to make into fur coats and consequently many Ocelots have been trapped or shot for the fur trade.



Mr. & Mrs. E. Sorby

KEEPER PAULINE TINGLE BOTTLE FEEDING YOUNG ORANGS

The Society also received an adult Anteater which arrived on the same flight from South America. This animal is a good sized specimen and must be at least five feet long, from nose tip to tail. Due to poor weather on arrival it was kept in the animal hospital but has subsequently been transferred to the Anteater paddock at the rear of the Monkey House.

Although of a relatively peaceful nature, anteaters have sharp, strong claws, which are used for tearing open termites nests. Their keeper is always very careful as these claws can do considerable damage. Anteaters have no teeth but catch ants with their long viscous tongue. At the Zoo we cannot supply our Anteaters with sufficient ants, so a substitute diet is used. This consists of eggs, milk, minced meat and various additives to supplement the vitamin side of the diet.

A pair of Indian Crested Porcupines have settled in their enclosure, which was previously occupied by the Racoons. The Racoons were transferred to the skunk enclosure at the front of the Cat House.

BIRTHS

A welcome addition in the Monkey House was the birth of a Vervet Monkey. We are pleased to report that both parents show every affection towards their baby and consequently all three have been left together.

The Vervet Monkey (*Cercopithecus aethiops*) is widely distributed throughout Africa, south of the Sahara Desert, and is one of the commonest Monkeys. Many are brought into this country as pets and when young they are very amenable; however, as with most other Monkeys when they become adult they turn vicious. Vervet Monkeys are classified as Guenons; this word being French in origin is derived from the monkey's habit of showing its teeth and grimacing.

Two American Bisons were born in the large Bison Paddock (No. 94 on the plan). The young American Bison are always a pale almost reddish-brown colour — in complete contrast to the dark brown fur of the adults.



K. W. Green, A.R.P.S.

BISON CALF WITH MOTHER

Three female Père David's Deer each produced a single youngster and all are thriving. The young deer, or fawns as they are called, have a spotted coat — in contrast to the rather coarse dull brown fur of the adults. They grow long thick fur for the winter which is shed during the spring. Our stag Père David's Deer has a reddish-tawny coloured summer coat and is a very striking animal; this is a little unusual as most of these deer have more drab coloured fur.

ZOO DIRECTORS CONFERENCE

Chester Zoo was host to the seventeenth Annual Conference of the Directors of English, Irish and Scottish Zoological Gardens from the 10th to 13th May.

This is the third time this conference has been held at Chester Zoo since its commencement in 1949.

Delegates and their wives stayed at the Queen Hotel in Chester, where the final dinner was held on the Friday evening.

Many subjects of Zoological and Scientific interest were discussed at the conference; in addition a full day was spent touring the zoo and trips were arranged to Pilkington's Glass Works and to North Wales.

BIRD NOTES

The past month has seen many new arrivals in the Bird Section including several unusual species.

The Waterfowl are well represented in these new arrivals with a pair of Laysan Teal as the rarest birds of the month.

Laysan Teal (*Anas platyrhynchos laysanensis*) are found on the island of Laysan, which is situated 900 miles from Honolulu. This island is very small being only three miles at the widest point and in consequence all this species are very much in-bred. During the beginning of the twentieth century the Laysan Teal were reduced almost to extinction, only ten individuals being observed. They have

now increased on Laysan Island and a hundred were counted during 1956. A few Teal have now found their way into Zoological Collections and we are extremely pleased to be presented with this pair. In complete contrast to most other species of wild duck, the Laysan Teal is stated to be almost tame in the wild state, rarely taking wing if approached but merely walking or swimming a short distance away.

Also presented with the Laysan Teal were a pair of European Wigeon and two pair of American Wigeon.

The Waterfowl department also received a Bewick's Swan (*Cygnus columbianus bewickii*) and this has been accommodated in the Waterfowl Pool (No. 44 on the plan), between the Parrot House and Polar Bear Enclosure.

Six Chilean Flamingos were received and were taken straight to the Flamingo Enclosure where they joined the eleven Greater, Rosy and Lesser Flamingos. Chilean Flamingos are similar in appearance to the Greater Flamingos found in parts of Europe.

Six Humboldt's Penguins were purchased to enlarge our Penguin colony and have settled well with our existing Humboldt's, King, Magellan and Rockhopper Penguins. The Humboldt's Penguin is found at the southern tip of South America and are in consequence easier to keep in captivity than those species from Antarctic Regions.

During the summer our Crane Collection is accommodated in the enclosures Numbered 91, 92 and 93 on the Guide. They are always a good show and five species of crane are to be seen in these enclosures. The Demoiselle Crane of which we recently received six, brought the total for this species to twelve. They are not particularly brightly coloured birds—mainly grey with black chest and neck with white drooping crest on the head. These Cranes breed in South East Europe, Asia and parts of North Africa and winter in Southern Asia and North Africa.

A pair of Cinereous Vultures (*Aegyptius monachus*) have been accommodated in one of the large bird of prey flights. These are most spectacular looking birds having an enormous wing-span and

GUIDE TO ZOOLOGICAL GARDENS

ANIMAL FEEDING TIMES

LIONS—3 p.m. except Fridays

SEA LIONS—2-40, 3-40, 4-40 p.m.

BEARS—3-15 p.m.

POLAR BEARS—4-0 p.m.

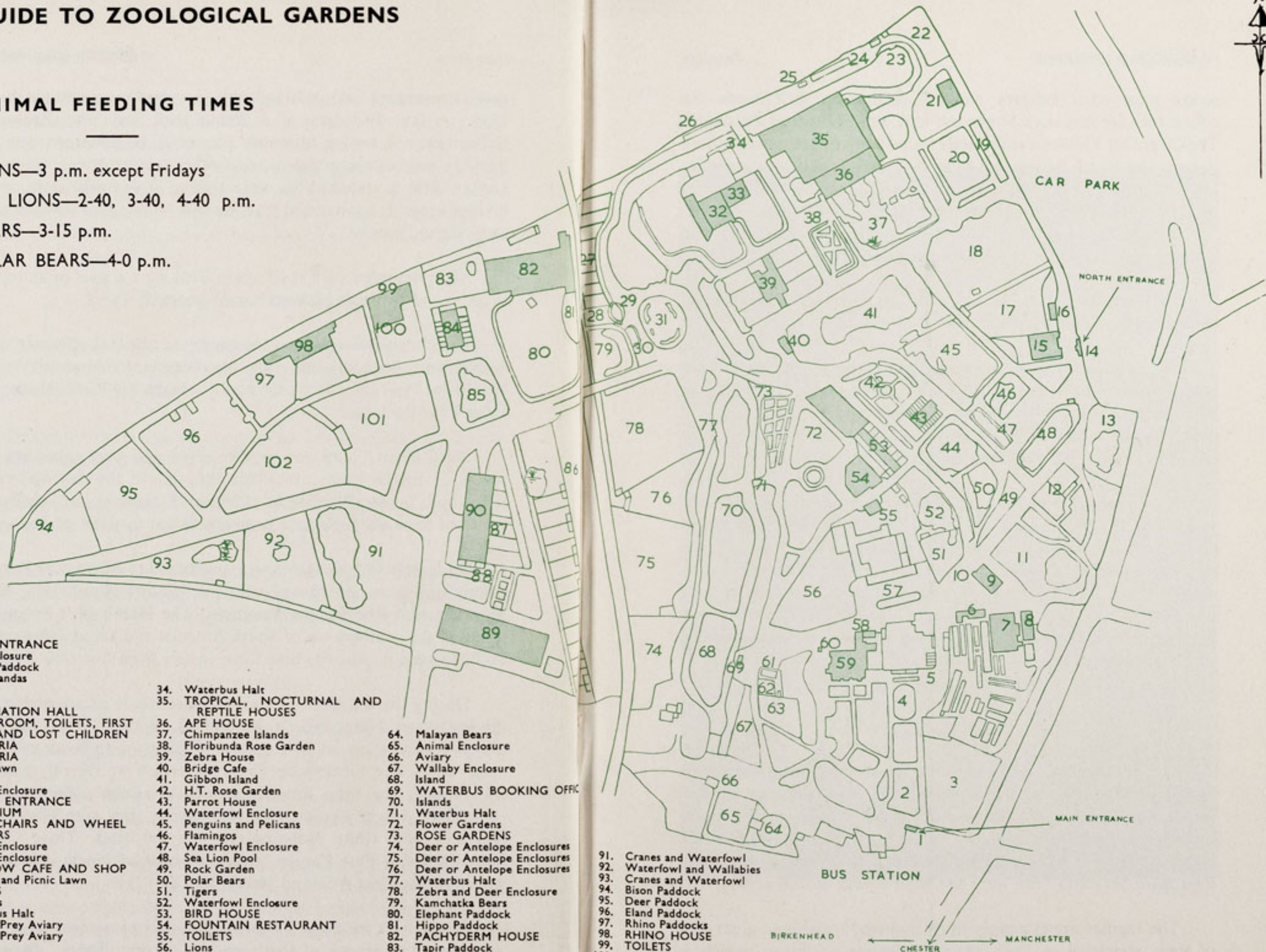
1. MAIN ENTRANCE
2. Bird Enclosure
3. Wapiti Paddock
4. Lesser Pandas
5. Aviaries
6. Milk Bar
7. CORONATION HALL
8. CLOAKROOM, TOILETS, FIRST AID AND LOST CHILDREN
9. CAFETERIA
10. CAFETERIA
11. Picnic Lawn
12. Bears
13. Animal Enclosure
14. NORTH ENTRANCE
15. AQUARIUM
16. PUSH CHAIRS AND WHEEL CHAIRS
17. Animal Enclosure
18. Animal Enclosure
19. RAINBOW CAFE AND SHOP
20. Aviaries and Picnic Lawn
21. TOILETS
22. Peccaries
23. Waterbus Halt
24. Birds of Prey Aviary
25. Birds of Prey Aviary
26. Owls
27. Jackal Enclosures
28. Wolverines
29. Porcupines
30. Coypus
31. Beavers
32. Giraffe House
33. Camel House

34. Waterbus Halt
35. TROPICAL, NOCTURNAL AND REPTILE HOUSES
36. APE HOUSE
37. Chimpanzee Islands
38. Floribunda Rose Garden
39. Zebra House
40. Bridge Cafe
41. Gibbon Island
42. H.T. Rose Garden
43. Parrot House
44. Waterfowl Enclosure
45. Penguins and Pelicans
46. Flamingos
47. Waterfowl Enclosure
48. Sea Lion Pool
49. Rock Garden
50. Polar Bears
51. Tigers
52. Waterfowl Enclosure
53. BIRD HOUSE
54. FOUNTAIN RESTAURANT
55. TOILETS
56. Lions
57. NEW ZOO SHOP
58. TOILETS
59. OAKFIELD RESTAURANT
60. G.P.O. Telephone Kiosk
61. Animal Enclosure
62. Animal Enclosures
63. Cheetahs

64. Malayan Bears
65. Animal Enclosure
66. Aviary
67. Wallaby Enclosure
68. Island
69. WATERBUS BOOKING OFFICE
70. Islands
71. Waterbus Halt
72. Flower Gardens
73. ROSE GARDENS
74. Deer or Antelope Enclosures
75. Deer or Antelope Enclosures
76. Deer or Antelope Enclosures
77. Waterbus Halt
78. Zebra and Deer Enclosure
79. Kamchatka Bears
80. Elephant Paddock
81. Hippo Paddock
82. PACHYDERM HOUSE
83. Tapir Paddock
84. Small Mammal House
85. Waterfowl Enclosure
86. Ankole Cattle
87. Stork Enclosures
88. Monkey Enclosures
89. Cat House
90. MONKEY HOUSE

91. Cranes and Waterfowl
92. Waterfowl and Wallabies
93. Cranes and Waterfowl
94. Bison Paddock
95. Deer Paddock
96. Eland Paddock
97. Rhino Paddocks
98. RHINO HOUSE
99. TOILETS
100. MPILA SNACK BAR
101. Antelope Enclosure
102. Antelope Enclosure

Animals may be moved from time to time.



unlike most other vultures, some feathering on their heads. In colour they are very dark brown but look almost black at a distance. The Cinereous Vulture was formerly found in many areas of Southern Europe and North Africa and Asia. At the present time this species is found in the pinewood areas of Spain, the North West tip of Africa and from parts of Greece eastwards to Mongolia and Tibet. Throughout its range this Vulture inhabits mainly open and arid country up to altitudes of 10,000 feet or more.

They are principally carrion feeders but are said sometimes to catch marmots, lambs and tortoises.

Two species of Pigeon joined the collection and have been placed in the Rainbow Aviary (No. 20 on the plan). They are two pair of the Crested Bronzewing Pigeon found in many parts of Australia and a Spotted Rock Dove, a common species over much of Africa, south of the Sahara.

A hen Satin Bower Bird has been accommodated in one of the aviaries in the Tropical House. Unfortunately, the hen Bower Bird is not nearly as colourful as the cock bird which is bright blue. As its name implies the Bower Bird builds a bower, first clearing an area of scrub, covering this with a layer of twigs and then building two parallel walls to a height of about fourteen inches. The bower is often decorated with feathers, flowers, shells, etc., and painted with masticated wood-pulp or fruit pulp.

JAGUAR (*Panthera onca*)

The photograph on the opposite page is of our young male Jaguar which arrived during March, 1965. He shares an enclosure in the Cat House with the young female Jaguar, which arrived two months later. We hope to breed from these animals in the future but it will be some time yet, as they do not mature until their third year and both were less than a year old on arrival.

The Jaguars are extremely lively animals, spending a great deal of time exercising in their spacious outside enclosure, which is backed with natural sandstone rockwork and provided with a small



J. Whitworth

MALE JAGUAR

pool, as these animals enjoy bathing. At all times they have access to centrally heated indoor quarters, provided with wooden sleeping boards. Even in the cold weather the Jaguars are very often to be seen out of doors and have acclimatized well to our inclement weather.

At first glance the Jaguars are similar in appearance to Leopards but a closer examination reveals the differences. The Jaguar is far more heavily built and therefore less agile than the Leopard, although there is not much difference in the actual length and height of the two species. In the case of the Jaguar, the spots or more correctly rosette markings, are more pronounced than those of the Leopard and often have a spot in the middle although the patterning is very similar.

In the wild state there can never be any confusion between the Jaguar and Leopard as both inhabit completely different areas — Leopards are found in Africa and Asia whilst Jaguars come from Southern U.S.A., Central and South America. Jaguars generally inhabit thickly forested areas but have been observed in more open country, especially the Pampas of Argentina.

The Jaguar being such a powerful animal is able to kill large prey but when it comes to Peccaries or Tapirs they generally choose young animals or stragglers who have wandered away from the main herd. Another favourite item of food is the Capybara, a large rodent found near many rivers and streams in South America.

GARDEN NOTES

The Spring bedding has been exceptionally good this year. During April we experienced very cold winds with snow and frost at night and were anxious in case the plants became so hardened, that they would not make the growth to give us our usual spring show. As usual nature has a way of righting itself and we were quite satisfied with the results. The Polyanthus were exceptionally good this year and remained in flower longer than usual.

At the time of going to press we are clearing the beds once again to replace with summer bedding plants. These are now being grown in the greenhouses and as usual we are bursting at the seams. At times it is quite a headache to try to fit in all the plants which we require.



J. Whitworth

CATTLYA, FROM THE GROUP OF ORCHIDS FLOWERING IN THE TROPICAL HOUSE

Some new plants which have come to hand have been planted in the Tropical House, including *Datura sanguinea* (orange flower), *Citrus mitis*, *Schinus molle* (Pepper Tree), *Theobroma* (Cocoa Tree), *Philodendron burgundy*, *Homolanthus populifolious*, *Tapienochilus ananassae*, *Lagerstroemia flos-reginae*, *Calathea oranta*, *Maranta arundinacea variegata*.

Another Oak branch has been suspended over the pool at the base of the waterfall and more Bromeliads planted on it, including the following which have been added to our collection: *Vriesea splendens*, *Aechmea rhodocyanea*, *Aechmea caurulescens* and *Nidularium rutilans*. We are pleased to be able to record that both the Banana and Lemon trees have fruited freely this year.

Preparations for summer are proceeding in many ways, i.e., the planting of the Mesembryanthemums and Gazanias in variety on the rockery. These plants flower in summer, in contrast to most rockery plants which are spring flowering. The planting of the flower boxes in the Bird and Mammal Houses has been completed and the hanging baskets of Fuchsia, etc., have been hung in the various animal houses throughout the zoo. Some seventy baskets are used in this way.

At last we have been able to reconstruct the garden at the back of the brown bears. This has been intended for a number of years, but owing to pressure of other work it has been delayed. This garden was one of the first made in the Zoo and the time has come for alteration but the trees adjacent to the bear pit have been left. A row of Cupresses have now been planted at the front, the rest of the area being made into a lawn.

HATCHINGS

A Scaly-breasted Lorikeet left the nestbox in the Bird House on April 17th. We have bred the Scaly-breasted Lorikeets several times previously: our present pair have reared one youngster each year for the past three years. During incubation and rearing of their young, our birds are disturbed as little as possible; as far as we can tell the young Lorikeets have spent ten weeks in the nestbox before venturing outside.

Our Kiskadee Flycatchers have again reared youngsters in the Temperate Bird House, for the second time during 1966. They have all been enticed into one of the aviaries, so the three youngsters cannot be attacked by other species or fall into the waterfalls.

ADVICE ON PETS

With the arrival of a few days of sunny and warm weather, we notice how many people put their pets, especially caged birds, out in the sunshine. Of course sunshine and fresh air are very valuable to all animals but an overdose can do much harm. Beware of putting a caged bird, or for that matter any confined animal, in the direct sunshine as they can become too hot. A far better plan is to place the cage in the shade of a tree where the bird has protection from the direct glare of the sun. It must be remembered that even birds from tropical areas will not normally lie in the full glare of the sun for any length of time, but find a shady spot during the heat of the day. A little known fact is that even snakes from the desert regions can literally fry to death if kept on the bare sand for a comparatively short length of time in the full glare of the mid-day sun.

Another point to remember is not to lock a dog in a car without an open window, as even on a cool day the interior of a car soon becomes over hot. Extra care must be taken in hot sunny weather as dogs are very sensitive to heat and the inside of a car becomes like an oven if left in direct sunlight.

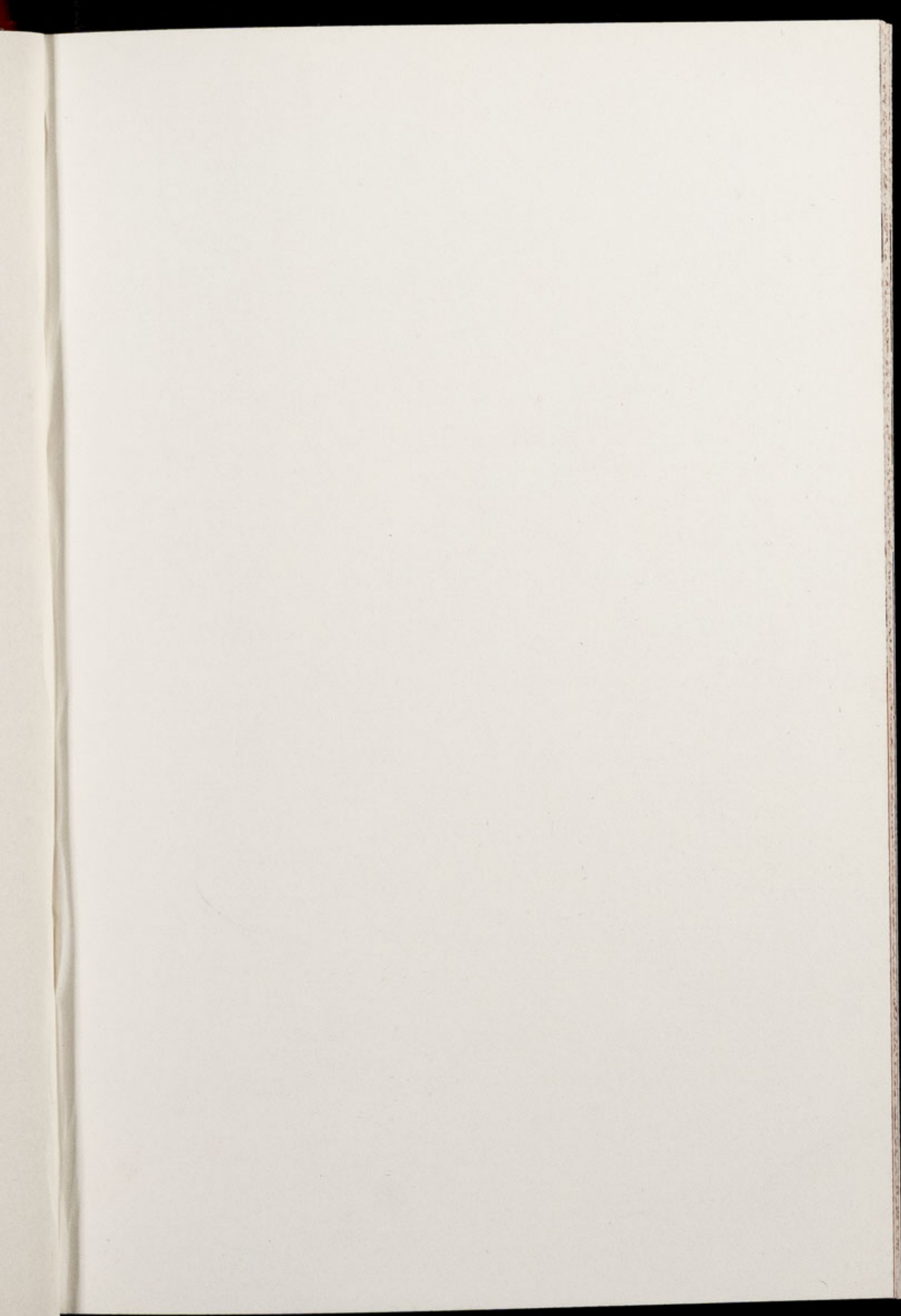
Will visitors please note that dogs are not allowed in the Zoo as they disturb the other animals. It is always far better to leave dogs at home rather than risk causing them any discomfort.





BATELEUR EAGLE

Mr. & Mrs. E. Sorby



Printed in England by
G. R. Griffith Ltd.
Castle Printing Works
Chester