



CHESTER ZOO NEWS

AND GUIDE

March 1979

Price 12p



The North of England Zoological Society

ZOOLOGICAL GARDENS, UPTON-BY-CHESTER

COUNCIL

- PROF. J. O. L. KING, Ph.D., M.V.Sc., B.Sc.(Agric.), F.R.C.V.S., F.I.Biol.
G. R. PRYOR, C.Eng. (Vice-Chairman) (Chairman)
HER GRACE SALLY DUCHESS OF WESTMINSTER
J. N. WILSON
J. A. KILPATRICK, M.B., Ch.B., F.R.C.S.E.
F. MOSFORD
H. D. COOPER, F.I.M., F.I.F.F. Cert., A.I.B.
A. J. BLAND, Dipl.Arch.R.I.B.A.
R. P. OWEN, A.R.I.C.S.
MRS. B. H. IRVINE
F. S. CARSON, M.C., B.A.(Cantab.)
DR. J. E. D. CHARLES-JONES, M.B., BS., M.R.C.G.P.
DINAH, LADY TOLLEMACHE
W. KELSALL, O.B.E., Q.P.M.
DR. J. R. BAKER, Ph.D., B.Sc., M.R.C.V.S.
DR. M. R. BRAMBELL, Ph.D.(Edin.), M.A., Vet.M.B.(Cantab.), M.R.C.V.S.
(Director)

CONTENTS

- page two* Mr. F. Williams—Clerk of Works
Mr. G. Pollard—Farm Manager
page three Stocktaking 1978
page seven The 1978 Wallace Expedition to Amazonia
pages eight/nine Zoo Guide
page fourteen Gardening News.
page sixteen Subscriptions

ILLUSTRATIONS

- page ten* The Marcelo taking on fresh fruit
Loading fresh fish—Rio Jurua
page eleven Bill Timmis examining Mealy Amazon
Expedition base camp—Carauari
page fifteen Mr. Worth

COVER PICTURE

Jaguar (Panthera onca)

By courtesy of J. Whitworth

Annual subscription — Two Pounds and Thirty Pence, postage paid
Telephone Chester 20106/7/9

MR. F. WILLIAMS—CLERK OF WORKS

Mr. Williams left the Royal Air Force and started work as a Keeper at the Zoo in 1947. He quickly gained promotion to a position as Head Keeper. During his time as a Keeper Mr. Williams became interested in the Aquarium which was then situated in the basement of the Oakfield and suffered frequently from severe flooding. He approached the Zoo Council and asked for permission to design and build a new Aquarium. Mr. Williams and his wife June, younger daughter of the late Mr. George S. Mottershead, did most of the work in the evenings designing and building the Aquarium, which is situated near the North Entrance.

Mr. Williams decided that he could be more useful and certainly enjoy his work even more, if he could become more involved in the building and maintenance side of the Zoo, and to help himself in this ambition he took a building course. In 1957, he gained promotion to Clerk of Works and since then has been responsible for the designing and building of many of the Zoo buildings, including the Lecture Hall.

Mr. and Mrs. Williams were married in 1949 and live at the Bungalow in the Zoo grounds. They have three children, Joy, Linda and George.

Mr. Williams' hobbies are sailing, and not surprisingly, fixing things.

MR. G. POLLARD—FARM MANAGER

Born in 1924 at Rose Farm, Willaston, Wirral, Mr. Pollard attended a Church of England school until the age of 14, when he began work on the family farm, Corner House Farm. After 17 years he moved to Wood Park Farm near Leahurst Station for 3 years. During 1941-1945 Mr. Pollard served with the Home Guard.

Mr. Pollard was approached by the Zoo Council Chairman, the late Mr. Grounsell, who offered him the position at Demage Farm, then consisting of about 95 acres. Eventually, he became responsible for the additional land at Caughall Farm; at the moment he farms about 225 acres, mostly arable, but also a number of bullocks.

During 1946-1951 he was a Member of the Young Farmers Group and in 1951 was elected Vice-Chairman.

Mr. Pollard's wife also comes from a farming family and they have a married son of 26 who is a Stress Engineer with Rolls Royce.

In his spare time Mr. Pollard enjoys gardening, ballroom dancing and watching motor-racing.

STOCKTAKING

The annual stocktaking has been carried out in the various departments and as at 31st December 1978 the collection of mammals, birds and reptiles was estimated to consist of:

Mammals	805 specimens of 134 species
Birds	1,279 specimens of 232 species
Reptiles and Amphibians	185 specimens of 70 species
Fishes	2,015 specimens of 173 species

BREEDING RESULTS FOR 1978

MARSUPIALS

	No. Born	No. Reared
Agile Wallaby (<i>Macropus agilis</i>)	1	0
Red-necked Wallaby (<i>Macropus rufogrisea</i>)	23	21
Western Grey Kangaroo (<i>Macropus fuliginosus</i>)	1	1
Red Kangaroo (<i>Megaleia rufa</i>)	2	2

PRIMATES

Ring-tailed Lemur (<i>Lemur catta</i>)	1	1
Squirrel Monkey (<i>Saimiri sciureus</i>)	1	1
Lion-tailed Macaque (<i>Macaca silenus</i>)	1	1
Barbary Ape (<i>Macaca sylvana</i>)	2	1
Sooty Mangabey (<i>Cercocebus atys</i>)	1	1
Green Monkey (<i>Cercopithecus sabaeus</i>)	1	1
Patas Monkey (<i>Erythrocebus patas</i>)	3	3
Chimpanzee (<i>Pan troglodytes</i>)	1	0
Orang-utan (Bornean form) (<i>Pongo pygmaeus</i>)	1	1

	No.	No.
	Born	Reared
<i>RODENTS</i>		
Plain's Viscacha (<i>Lagostomus maximus</i>)	2	2
<i>CARNIVORES</i>		
Dingo (<i>Canis familiaris</i>)	6	0
African Common Civet (<i>Viverra civetta</i>)	1	1
African Banded Mongoose (<i>Mungos mungo</i>)	1	0
Lion (<i>Panthera leo</i>)	1	0
Siberian Tiger (<i>Panthera tigris</i>)	4	3
Leopard (<i>Panthera pardus</i>)	2	0
Leopard (Black form) (<i>Panthera pardus</i>)	3	3
<i>ELEPHANTS</i>		
Cross-bred Elephant (<i>Loxodonta africana</i> x <i>Elephas maximus</i>)	1	0
<i>ODD-TOED UNGULATES</i>		
Cross bred Persian/Turkmen Onager (<i>Asinus hemionus</i>)	1	1
Common Zebra (<i>Hippotrigris burchelli</i>)	3	3
South American Tapir (<i>Tapirus terrestris</i>)	1	1
<i>EVEN-TOED UNGULATES</i>		
Common Hippopotamus (<i>Hippopotamus amphibius</i>)	1	1
Llama (<i>Llama glama</i>)	1	1
Guanaco (<i>Llama guanicoe</i>)	1	1
Alpaca (<i>Llama pacos</i>)	2	2
Fallow Deer (<i>Dama dama</i>)	4	4
Axis Deer (<i>Axis axis</i>)	1	1
Wapiti (<i>Cervus canadensis</i>)	4	4
Pere David's Deer (<i>Elaphurus davidianus</i>)	3	3
Reindeer (<i>Rangifer tarandus</i>)	2	2
Giraffe (<i>Giraffa camelopardalis</i>)	2	1
Greater Kudu (<i>Tragelaphus strepsiceros</i>)	1	1
Nilgai (<i>Boselaphus tragocamelus</i>)	1	1
Highland Cattle (<i>Bos taurus</i>)	2	1
American bison (<i>Bison bison</i>)	1	1
Red Lechwe (<i>Kobus leche</i>)	8	4
Blackbuck (<i>Antilope cervicapra</i>)	1	0

Eventuated Ungulates—cont'd.

	No. Born	No. Reared
Arabian Gazelle (<i>Gazella arabica</i>)	7	5
Bagot Goat (<i>Capra nircus</i>)	1	1
Soay Sheep (<i>Ovis aries</i>)	9	3

HATCHINGS*RHEIFORMES*

Common Rhea (<i>Rhea americana</i>)	1	0
---------------------------------------	---	---

CICONIIFORMES

Night Heron (<i>Nycticorax nycticorax</i>)	1	1
--	---	---

ANSERIFORMES

Canada Goose (<i>Branta canadensis</i>)	5	5
Chiloe Wigeon (<i>Anas sibilatrix</i>)	3	3
Tufted Duck (<i>Aythya fuligula</i>)	1	1
Maned Goose (<i>Chenonetta jubata</i>)	2	2

GALLIFORMES

Blue-eared Pheasant (<i>Crossoptilon auritum</i>)	9	9
---	---	---

COLUMBIFORMES

Laughing Dove (<i>Streptopelia senegalensis</i>)	4	4
Crested Bronzewing Pigeon (<i>Ocyphaps lophotes</i>)	1	1

PSITTACIFORMES

Red Lory (<i>Eos bornea</i>)	2	0
Scaly-breasted Lorikeet (<i>Trichoglossus chlorolepidotus</i>)	1	1
Green-naped Lorikeet (<i>Trichoglossus haemotodus micropteryx</i>)	1	1
Mitchell's Lorikeet (<i>Trichoglossus haemotodus mitchelli</i>)	1	1
Swainson's Lorikeet (<i>T. haemotodus moluccanus</i>)	6	5
Blue-eyed Cockatoo (<i>Cacatua ophthalmica</i>)	1	1
Cockatiel (<i>Nymphicus hollandicus</i>)	28	28
Red-sided Eclectus Parrot (<i>Eclectus roratus goodsoni</i>)	1	1

<i>Psittaciformes—cont'd.</i>	No. Born	No. Reared
Crimson-wing Parakeet (<i>Aprosmictus erythropterus</i>)	1	1
Barraband Parakeet (<i>Polytelis swainsoni</i>)	2	2
Red-rumped Parakeet (<i>Psephotus haemotodus</i>)	2	2
Splendid Parakeet (<i>Neophema splendida</i>)	3	3
Fischer's Lovebird (<i>Agapornis fischeri</i>)	1	1
Peach-faced Lovebird (<i>Agapornis roseicollis</i>)	5	5
Derbian Parakeet (<i>Psittacula derbiana</i>)	1	1
Nanday Conure (<i>Nandayus nanday</i>)	10	10
Lesser Patagonia Conure (<i>Cyanoliseus patagonus</i>)	3	3
Quaker Parakeet (<i>Myiopsitta monachus</i>)	6	6
Guiana Parrotlet (<i>Forpus passerinus</i>)	5	5
Blue-fronted Amazon Parrot (<i>Amazona aestiva</i>)	1	1

STRIGIFORMES

Great Eagle Owl (<i>Bubo bubo</i>)	2	2
--------------------------------------	---	---

PASSERIFORMES

Green Singing Finch (<i>Serinus mozambicus</i>)	2	2
Fire Finch (<i>Lagonostica senegala</i>)	2	2
St. Helena Waxbill (<i>Estrilda astrild</i>)	2	2
Orange-cheeked Waxbill (<i>Estrilda melpoda</i>)	1	1
Red-eared Waxbill (<i>Estrilda troglodytes</i>)	2	2
Zebra Finch (<i>Poephila guttata</i>)	10	10
Rufous-backed Mannikin (<i>Lanchura nigriceps</i>)	2	2
Indian Silverbill (<i>Lanchura m. malabarica</i>)	7	7
Spice Bird (<i>Lanchura punctulata</i>)	3	3
Bengalese (<i>Lanchura domestic</i>)	4	4
Java Sparrow (<i>Padda oryzivora</i>)	2	2
Jerdon's Starling (<i>Sturnus burmanicus</i>)	2	2

REPTILES

SAURIA

Leopard Gecko (<i>Eublepharis macularis</i>)	8	8
Prehensile-tailed Skink (<i>Corucia zebrata</i>)	2	2

SNAKES

Madagascan Tree Boa (<i>Sanzinia madagascariensis</i>)	3	3
Pygmy Rattlesnake (<i>Sistrurus miliarius</i>)	15	15

THE 1978 WALLACE EXPEDITION TO AMAZONIA

Brazil is the largest country in South America in both population and area, and ranks fifth largest in the world at 8,511,965 km. Lying mainly in the tropics, its immense variety of habitat types ranges from the vast, luxuriant Amazon rain forests in the North to the Atlantic coastal forests in the East, the Savannas of the central plateau and the Brazilian pine forests to the flat, almost treeless, pampas of the South; its great diversity of animal species include some found nowhere else in the world. As in many other countries, many of the most interesting animals have been decimated by Man. Forty-two endangered species occur in Brazil, 22 mammals, 4 birds and 16 reptiles and amphibians.

I always feel that first impressions are so important and my own first impression of Amazonia when we arrived on the 7th July, was sheer unadulterated excitement; during a flight from Boa Vista to Manaus taking just over 2½ hours we had views of the rain forest below, great rivers winding through some of the most remote areas of civilisation. There are virtually no communications except for an isolated flight from Manaus to some of the small settlements that we passed over.

From Manaus we travelled by boat almost 1,000 miles to a small rubber town called Carauari which is situated about 400 miles up the Rio Jurua, a tributary of the Solimoes, and readily accessible by riverboat. We spent almost six days on board a small boat called the *Marcelo* owned by the Captain, Mariso Rufino De Oliveira, a man who had made the round trip from Manaus to Carauari many times; his knowledge of the river and river life was very impressive.

Many species of birds were observed from the *Marcelo*, large flocks of Black-tailed Conures, *Pyrrhura melanura*, Blue and Yellow Macaws, *Ara ararauna*, Chestnut-fronted Macaw, *Ara severa*, Dusky-headed Parrot, *Aratinga weddelli*, Painted Conure, *Pyrrhura picta*, Blue-headed Parrot, *Pionus menstruus*, Festive Amazon, *Amazona festiva*, and Yellow-headed Parrots, *Amazona ochrocephala*.

Several specimens of young Amazons were examined and photo-

CHESTER ZOO

THE NORTH OF ENGLAND
ZOOLOGICAL SOCIETY
ZOOLOGICAL GARDENS

FOR A COMPLETE TOUR OF THE ZOO — Follow Nos 1-14 South Entrance,
or Nos 16-116 from North Entrance then return to Nos 1-14

**Chester Zoo is Open Daily
from 9.00 a.m. until dusk.**



1. SOUTH ENTRANCE

2. Peacock Enclosure
3. Wapiti Paddock
4. Coati Enclosure
5. Aviaries
6. Milk Bar
7. CORONATION HALL
8. CLOAKROOM, FIRST AID, TOILETS, INVALIDS' TOILETS, MOTHER AND BABY ROOM
9. CAFETERIA
10. Picnic Lawn
11. Bears
12. Jubilee Gardens (Noah)
13. Kiosk
14. AQUARIUM
15. NORTH ENTRANCE
16. PUSH CHAIRS, WHEEL CHAIRS, LOST CHILDREN
17. PARROT HOUSE
18. Free Flight Aviary
19. APE HOUSE
20. Shop and Kiosk
21. Aviaries and Picnic Lawn
22. TOILETS
23. Tuatara Exhibit
24. Peccaries
25. Waterbus Halt
26. Birds of Prey Aviaries
27. Condor Aviary
28. Jackal and Hyena Enclosures
29. Animal Enclosure
30. Porcupine Enclosure
31. Coypus
32. Beavers
33. Giraffe House

34. Camel House
35. Waterbus Halt
36. TROPICAL, NOCTURNAL & REPTILE HOUSES
37. CHIMPANZEES
38. Floribunda Rose Garden
39. Mammal House
40. Gibbon Island
41. H.T. Rose Garden
42. Aviaries
43. Flamingos
44. Waterfowl Enclosure
45. Waterfowl Enclosure
46. Waterfowl Enclosure
47. Penguins
48. Sealions
49. Rock Garden
50. Polar Bears
51. Big Cat Enclosure
52. Waterfowl Enclosure
53. Anteaters
54. BIRD HOUSE
55. FOUNTAIN RESTAURANT
56. Ape Nursery
57. TOILETS
58. Lions
59. SOUVENIR SHOP
60. TOILETS
61. OAKFIELD RESTAURANT

62. P.O. Telephone
63. Aviary
64. Animal Enclosure
65. Animal Enclosure
66. Ornamental Rock Garden
67. Wallabies and Kangaroos
68. Kangaroo Enclosure
69. Aviary
70. Cheetahs
71. WATERBUS BOOKING OFFICE AND KIOSK
72. Waterbus Halt
73. Fountain Flower Gardens
74. Rose Garden
75. Red Lechwe
76. Red Lechwe
77. Deer or Antelope Enclosure
78. Waterbus Halt
79. Zebra and Deer Enclosure
80. Brown Bears
81. ELEPHANTS
82. Hippos
83. Tapirs
84. Small Mammal House
85. Waterfowl Enclosure
86. Ankole Cattle
87. Emus, Cranes and Flamingos
88. Outside Monkey Enclosures
89. Baboon Pens
90. Cat House
91. Tiger Enclosures

92. Antelope Enclosure
93. Antelope Enclosure
94. Antelope Enclosure
- 94a. Llamas
95. Zebra Enclosure
96. Zebra Enclosure
97. Zebra Enclosure
98. Waterfowl Enclosure
99. Waterfowl Enclosure
100. Blackbird Enclosure
101. Wallaby Enclosure
102. Antelope Enclosure
103. Reindeer Enclosure

104. Pere David's Deer Paddock
105. Przewalski's Horses
- 105a. Onager
106. Arabian Gazelles
107. Musk Oxen
108. Bison
109. Pere David's Deer Paddock
110. Prairie Marmots, Alpacas
111. Antelope Enclosure
112. RHINOS
113. TOILETS
114. Mpila Snack Bar
115. Antelope Enclosure
116. MONKEY HOUSE

**ANIMALS MAY BE MOVED
FROM TIME TO TIME**

ANIMAL FEEDING TIMES:

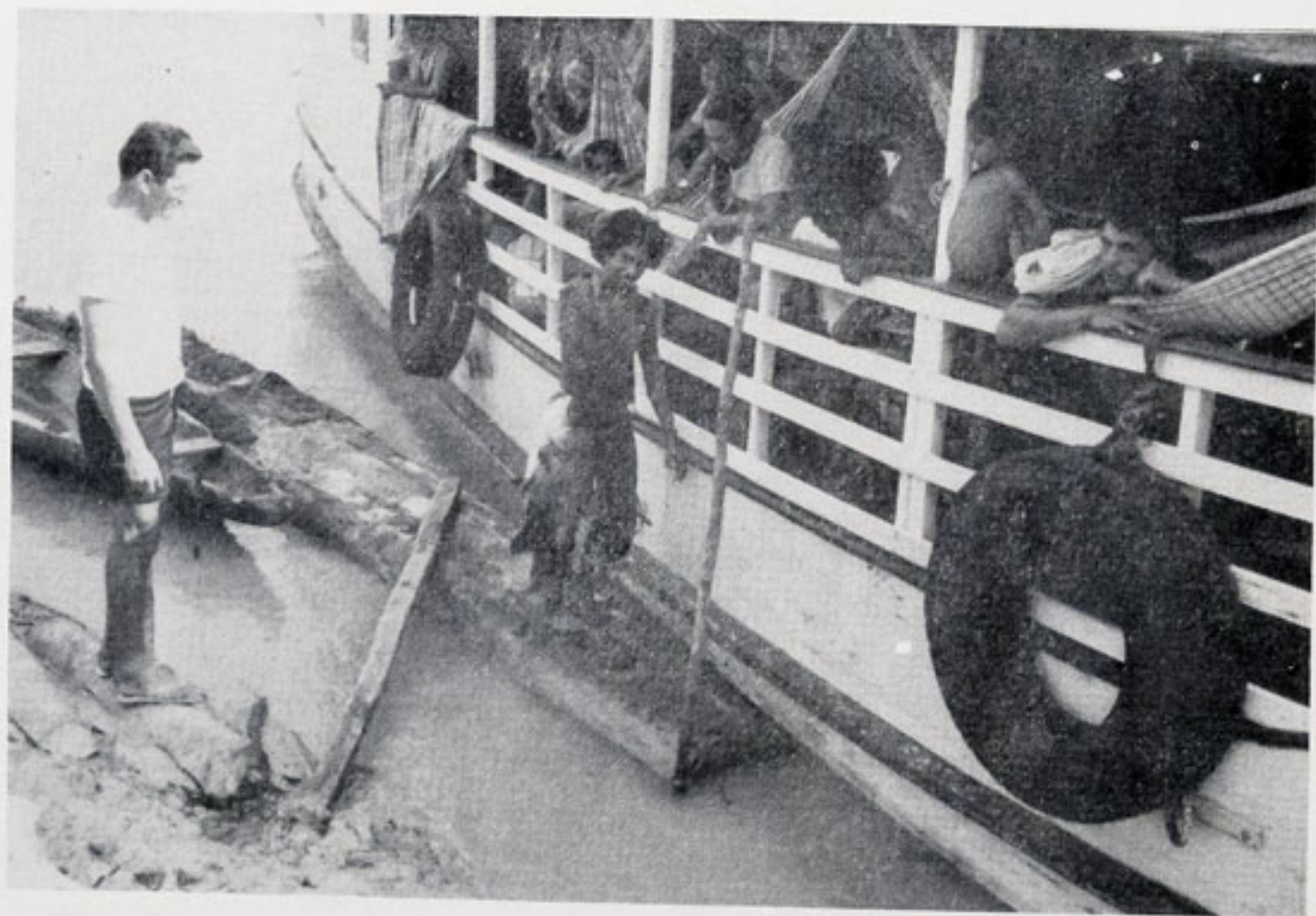
LIONS—3 pm except Fridays

SEA LIONS 3 times daily—
2-30 pm, 3-30 pm, 4-30 pm





THE MARCELO TAKING ON FRESH FRUIT



LOADING FRESH FISH—RIO JURUA

Photos by courtesy of W. H. Timmms



BILL TIMMIS EXAMINING MEALY AMAZON (*Amazona farinosa*)



EXPEDITION BASE CAMP—CARAUARI. S.W. AMAZONIA

Photos by courtesy of W. H. Timmis

graphed in some of the river settlements and information gathered together from observation and by talking to local people through our Brazilian guide and interpreter. The most exciting parrot species observed was a breeding pair of Red-fan or Hawk-headed Parrot, *Derophtus accipitrinus*, an exceptionally beautiful bird and one of the most unusual of all parrots in its feathering. It has an erectile ruff which is unique among parrots; when the ruff is erected it frames the head like an immense fan. I was shown a nesting tree in which a pair of Hawk-heads had nested for several years, the nesting hole being about 20 m (65 ft) from the ground. The spread tail of this species in flight easily identifies it from other parrots.

Tinamous could be heard calling from the forest almost every day. White-necked Heron, *Ardea cocoi*, Capped Heron, *Pilherodius pileatus*, Yellow-crowned Night Heron, *Nyctanassa violacea*, Boat-billed Heron, *Cochlearius cochlearius*, Wood Ibis, *Mycteria americana* and Maquari Stork, *Euxenura maquari*, were also observed. Small groups of Jabiru, *Jabiru mycteria*, were seen and pairs of Horned Screemers flew up from the reed beds as the Marcelo approached; breeding pairs of Orinoco Geese perched high up in the tallest trees, a most unusual sight to see geese perching in trees. The Wattled Curassow, *Crax globulosa*, were seen very early one morning leaving their roosting tree and flying across the river Jurua. Wattled Jacana, distinguishable from other birds by their very long toes and nails which enable them to run over lily pads and floating vegetation were observed; they are good swimmers and dive easily; their basic diet includes vegetable matter, small snails, insects and other animal life. Collared Plover, *Charadrius collaris*, were feeding and displaying on large sand bars in and on the edge of the river.

On several occasions Manatee, *Trichechus inunguis*, showed their noses above water as they came up for air. The boat crew told me that Manatees with their broad, flat and rounded tails are capable of speeds up to 30 mph. One phenomenon mentioned was the animal's ability to "roll" itself up and down gently sloping banks, somewhat like a barrel. Manatees make no noise except for a low whistle, normally associated with heavy breathing; descriptions by the Marcelo crew ranged from a "snoring or snorting" to a "low whistle". Mating, I was told, took place for the most part in May but also in August (the driest month), when the rivers are very low.

Apparently, as many as a dozen Manatee congregate as a herd in shallow water and begin to pair off, making a commotion and disturbance in the water. The pairs then drag themselves half out of the water and embrace, lying on their sides. After this they return to the water and again play vigorously as a herd before dispersing. The entire courtship and mating takes some 15-20 minutes. Young calves, they said, were seen with their mothers mostly in the wet months, September through to April. The majority of the crew spoke of seeing single calves, although twins were also reported. The most popular position during nursing appears to be with the calf beside its mother suckling at the pectoral teat. Oliveira referred to the mother floating upright in the water and clasping the calf in a human fashion. Manatees are hunted for food in South Western Amazonia and their local name is "Peixa-boi".

All species of primates are called Macaca by the local people and large troops of Squirrel Monkeys, *Saimiri sciureus*, could be seen in trees on the river bank early each morning and later in the evening. White-fronted Capuchin, *Cebus albifrons*, Tufted Capuchin, *Cebus apella*, Black-faced Spider Monkey, *Ateles paniscus*, and Woolly Monkeys, *Lagothrix lagotricha*, were seen; the Red Howler Monkey, *Alouatta seniculus*, however, was more often heard than actually observed.

Hairy Saki, *Pithecia monachus*, were noted as groups of up to six specimens fed close to the river edge. Only one group of Tamarins was seen and this was about two days from Manaus on the Solimoes; they were some distance away in a group of tall, flowing trees, and I think that they were Martin's Tamarins, *Saguinus martinsi*. The Martin's Tamarin is of a general brown with yellowish forearms and hands, the face is bare and black.

Every day Boutu, or Amazonian Dolphins, *Inia geoffrensis* about 7 feet long, black above with a pink underside (some were completely flesh-coloured) played in front and on each side of the boat. Few reptiles were seen during the river trip except for the Common Iguana, *Iguana iguana*; this species probably grows up to 6 feet long in some of the very remote areas of rain forest. Unfortunately, they are hunted for their flesh which is a renowned delicacy, as well as being put up for sale to animal dealers and Zoos. Never-

theless, they do not appear to be in danger of extermination. Both sexes have an elongated erectile throat sac: along the neck, back and tail there is a crest with spines that are not very hard. The crest in females and young is shorter. The tail takes up some three-fifths of the total length. Large numbers of Arrau Turtle, *Podocnemis expansa*, had started to lay eggs in sandbanks as the river level dropped, exposing vast areas of sand. Certain beaches had flags flying to designate that turtle eggs were protected by law; unfortunately, the law enforcement was in Manaus. Turtle eggs are collected in very large numbers, endangering the turtles' survival. Adults, including laying females, are also collected by the thousand and killed for food.

Upon arrival in Carauari, we selected a suitable camp site which was some 10 km from the town away from the Rio Jurua. It was set 20 metres back from a track running from Carauari to the next river. There was a small free-flowing stream with a pool by the camp and the site was surrounded by forest containing many rubber and hunting trails. After building suitable huts we then prepared for the serious scientific work which would occupy us for the next two months.

W. H. TIMMIS

GARDENING NEWS

Last month the severe weather prevented the Gardeners from doing any planting of shrubs which was needed in various parts of the Zoo. The ground was frozen and covered with snow most of the month; the lowest temperatures being -8°C and never rising any higher than $+2^{\circ}\text{C}$.

Gardeners were able to walk across the frozen Water Bus Canal on to the islands to give them a good clean-up before the daffodils begin to come up. The three islands were made when the Canal was dug out some twenty years ago to make a Water Bus route through the Zoo. Since then the daffodills planted on them have increased and are usually at their best in flower during the second week of April.

We have lost some shrubs due to the hard winter; in February



WALTER WORTH

noticeably the *Hebes* (*Veronica*) and among the spring bedding some Wallflowers, Daisy and Pansy. Losses have been made up by using spare plants left in the Nursery. The *Polyanthus* have been protected from the birds with black nylon cotton and shoots of *privet* trimmed up to support it 6 inches above the plants.

The Tropical House and other Animal Houses have had new plants put in the troughs and with the daylight lengthening each day we should see the plants making new growth. In the Tropical House beds there are gaps to be planted with *Croton*, *Hibiscus*, *Jacobinia* and ferns for ground cover; plants for ground cover here have always been something of a problem and this year we are trying a *Selaginella* which is a club-moss with fronds which spreads very rapidly. Also, *Helxine Soleiroli*, common name Mind-your-own-Business; this plant spreads rapidly in moist conditions. The name *Helxine* comes from the Latin "Helix"—the ivy, and *Soleiroli* is a Spanish General. Fourteen young banana plants, *Musa Paradisiaca* var. *Sapientum*, have been planted in two groups; these were raised from seed saved from plants that fruited in the Tropical House.

Citrus have been tried but are not successful planted out in the Tropical House so they are grown in pots at the greenhouses and displayed in the entrance when they are fruiting. One of the groups just inside the entrance to the Tropical House is now staged with *Begonia Species* and the other with *Orchids*.

An attractive and unusual plant in the Tropical House is the Staghorn Fern which can be seen attached to a wall. These are growing on a piece of cork bark and were fixed on with wire, then, gradually the roots attach themselves to the bark; the leaves resemble the antlers of a stag. The botanical name is *Platynerium Bifarcatum* and it is a native of Australia. Growing on the wall among the Staghorn Fern is *Ficus pumila*, which is a climber with roots that are self-clinging to the wall like Ivy.

A fresh stock of the Water Hyacinth and Water Lettuce from the greenhouses will be placed to float on the ponds in the Tropical House this Spring. Some of these plants were put on the ponds last Autumn but they have deteriorated during the Winter and need to be replaced.

The Glasshouse section is now busy with propagating the plants for planting out in the summer.

SUBSCRIPTIONS

New readers of the CHESTER ZOO NEWS who would like to receive the magazine regularly may be interested to know that subscription forms can be obtained from the souvenir shops. An annual subscription (12 issues) costs £2.30, postage paid, which can either be handed over the counter at the shops or posted with the completed form to the Director, Chester Zoo, Chester.

**The following notice is displayed on several boards in the grounds
Please comply with it at all times**

FEEDING OF ANIMALS AND BIRDS

IT IS AN OFFENCE for any member of the public to offer food of any description to any Animal or Bird in Chester Zoo.

This regulation is made for the sake of the health of the Animals and Birds. Since the **NO FEEDING** rule was introduced, the number of deaths has dropped appreciably and sickness due to wrong feeding has been virtually eliminated.

What you may be offering to an animal may only be a sweet or an inoffensive piece of bread, but it can mean a death sentence for the animal. For example, a cough drop, which may relieve your cough, can cause instant death to many Animals and Birds in the Zoo.

You must not lose sight of the fact that you are only one of over a million visitors who visit the Zoo annually. If for instance an elephant had one bun from only one tenth of a day's visitors during the summer, it would eat between three and four thousand. You can guess the result.

We realise what a temptation it is for visitors, particularly children, to feed our Animals and Birds and this is why we invite members of the public to be present at the official feeding times.

This is a polite warning to you, asking you not to feed the animals. If you ignore it, the Keepers are authorised to ask you to leave the Gardens.

If you really love Animals and Birds, you will appreciate the wisdom of the ruling—No feeding by members of the public.

**PLEASE HELP US TO KEEP OUR COLLECTION OF
ANIMALS NOT ONLY ALIVE BUT IN FIRST CLASS
CONDITION**

