



By Courtesy of Mr. & Mrs. E. Sorby

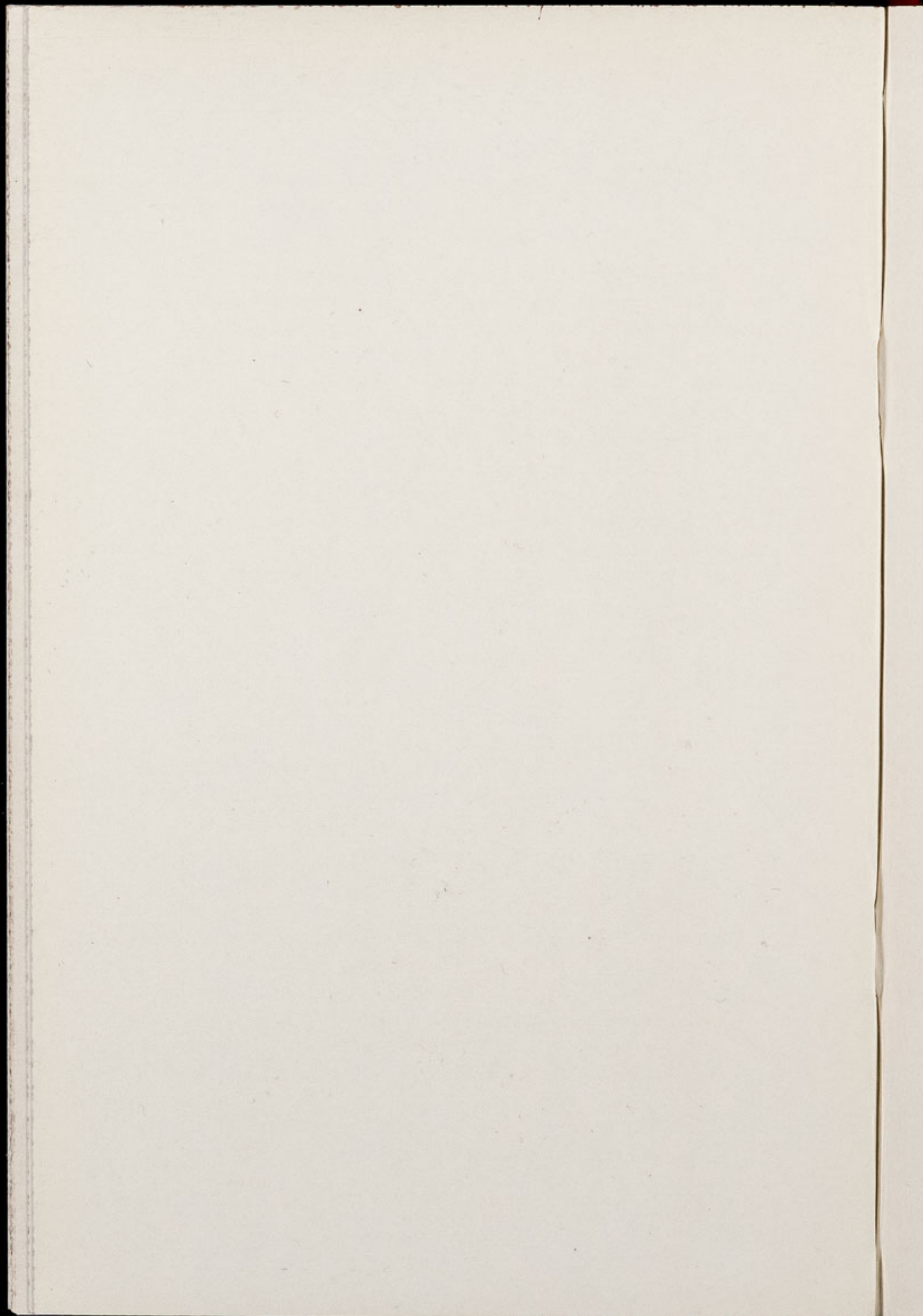
Chester Zoo News

AND GUIDE

THE NORTH OF ENGLAND ZOOLOGICAL SOCIETY
ZOOLOGICAL GARDENS, UPTON - BY - CHESTER

November 1966

Price 1/-



Editorial

With the advent of colder weather and consequently less visitors to the Zoo, many of our catering establishments and a Zoo Shop have been closed for the winter. Visitors to the Zoo in the winter can still obtain a hot meal at the Oakfield Restaurant (Licensed) or Fountain Restaurant and snacks are available at the Cafeteria and Mpila Snack Bar. Souvenirs of the visit can be purchased, as part of the Main Zoo Shop will remain open.

For those who do not like crowds, or for the keen zoologist, from now until Easter is the best time to visit the Zoo. All the animal houses are centrally heated and the Tropical House is particularly attractive under inclement conditions, so even in the coldest weather a day at the Zoo can be most enjoyable.

CONTENTS:

<i>page two</i>	Arrivals and Births.
<i>page four</i>	Surplus Stock.
<i>page six</i>	The Tropical House.
<i>page eight/nine</i>	Zoo Guide.
<i>page ten</i>	Description of Aerial Photographs of Zoo.
<i>page twelve</i>	Bird Notes.
<i>page fifteen</i>	Notes on Cover Photograph.

ILLUSTRATIONS:

<i>page three</i>	Raccoon.
<i>page five</i>	Coypu.
<i>page seven</i>	Tropical House, 1964 and 1966.
<i>page eleven</i>	Aerial Photographs of the Zoo.
<i>page thirteen</i>	Rheas.
<i>page fifteen</i>	Drawing of Golden-Fronted Fruitsucker.
<i>page sixteen</i>	Great Eagle Owl.

COVER: *This month's cover photograph shows a Giraffe's eye view of a Giraffe. (See page 15 for details).*

ARRIVALS AND BIRTHS

The second Grant's Zebra to be born during 1966 arrived on October 13th — this addition brings our stock of these animals to eight.

During the summer months they occupy a large paddock (No. 78). At the time of writing all these Zebras are being transferred to the rear of the Giraffe House for the winter months. Although these animals are fairly hardy they require covered accommodation in the cold weather.

Another recent birth is that of a Highland Calf, which is being hand reared. This animal can be seen in the small paddock next to the Sunbear Pit (No. 64 on the Plan).

A male and two female Raccoons arrived and joined our two males in the walled enclosure near the Cat House and have settled well with the original Raccoons.

As can be seen in the photograph on page 3, Raccoons are very attractive animals with the white face markings and ring tail. In general colouration they are a dark grey-brown, but individuals vary considerably. Raccoons normally wash their food before eating it when kept in captivity. This is thought not to be from any hygienic motive but due to the fact that in the wild state they spend a considerable amount of time searching for small aquatic prey in shallow water. At Chester Zoo our Raccoons are fed a diet of 50% chicken, rabbit, etc., and 50% fruit, bread and biscuit.

The species of Raccoon at Chester Zoo (*Procyon lotor*) is distributed over large areas of North America. They are still fairly common despite large numbers being trapped for fur — a figure of one million pelts a year being sold in the United States.

Other species of Raccoon are found in South America and on various islands off America; it is generally believed that there are seven species of Raccoons.



RACCOON

E. Kirkland, F.R.P.S.

A Brown Capuchin (*Cebus appella*), a species of South American Monkey joined the other Capuchins in the Monkey House.

A recent addition was a female Kinkajou, which has been accommodated in the animal hospital but will eventually be moved to the Nocturnal House. Kinkajous are found in forests of Central and South America; where they feed principally on succulent fruits. Their prehensile tails are a great aid when searching for fruit and act almost as a fifth limb.

In the Reptile House the most outstanding new arrival was a Mexican Beaded Lizard. We already had two Gila Monsters and are now pleased to exhibit the only two venomous species of lizard known to science.

The Mexican Beaded Lizard is found in desert areas of Western Mexico. Their venom is deadly to small amphibians, mammals, reptiles and fledgling birds on which they principally feed, but is rarely fatal to human beings. Other items of food include various insects and eggs of birds and reptiles.

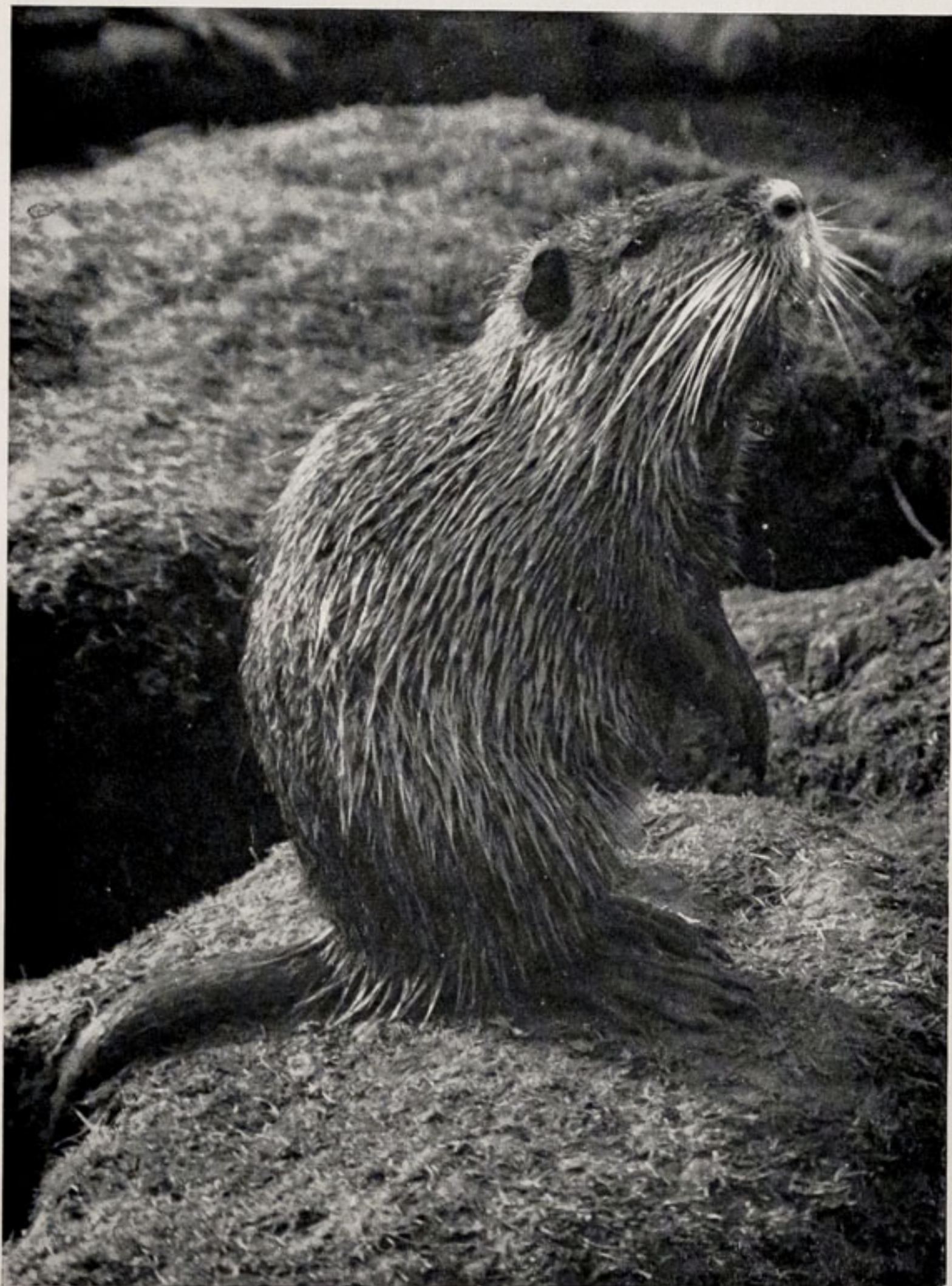
Two other venomous new arrivals to the Reptile House were a Diamond-backed Rattlesnake and a Water Moccasin. Both these species are very dangerous, producing highly toxic venom. The Water Moccasin is often called the Cotton-mouth Snake due to its habit of opening its white coloured mouth when in a threatening attitude.

SURPLUS STOCK

From time to time all major zoos exchange animals with each other and in this way surplus stock can be disposed of and animals which are wanted can be obtained.

On the 21st October, six Coypus were dispatched by sea to Adelaide Zoo in such an exchange deal. These animals are fairly easy to cater for on board ship as their food consists of grain and vegetables.

As can be seen from the photograph, Coypus are not particularly beautiful animals, reminding most people of huge water rats. In fact they are Aquatic Rodents and are indigenous to South America. Although their fur looks coarse and rough, a soft greyish fur is revealed if the outer hair is removed. This is known as Nutria and is made into fur coats, etc. Because of this soft fur Coypus have



COYPU

K. W. Green, A.R.P.S.

been raised in captivity in many countries. Unfortunately, in Britain several escaped and have bred, causing havoc in parts of East Anglia where they burrow into the banks of dykes and rivers and also eat large quantities of grain and vegetables.

In exchange for these Coypus we received a young pair of Rheas which have been described in this month's Bird Notes and their photograph is included on page 13.

Other animals surplus to our requirements and which left the Zoo during the month were:— a Bactrian Camel, the first South American Tapir to be born at the Zoo and a Père David's Deer.

THE TROPICAL HOUSE

The Tropical House which was opened in June 1964 has now taken on a really tropical aspect. Several of the Banana Trees have almost reached the roof which means that they are over 30 feet high. The Crotons and many other tropical plants have grown to such an extent that they are in fact better specimens than can be seen in their natural habitat. The reason for this is that in their own country there are frequently violent storms and hurricanes which break them down, but in our Tropical House they are protected from such vicissitudes.

Last year the Hibiscus hardly bloomed at all but this year has presented a blaze of colour throughout the season. Previously we found birds breaking off the flower buds just as they were about to blossom and it seemed to us that we were not to be allowed to have a flower display whilst these birds were at liberty in the house. This year, however, for some incredible reason the birds have left the Hibiscus buds completely alone, with the result that there has been a wonderful show of blooms. Some of the Bougainvillaea, particularly the pink variety, have been exceptionally good and have added a great deal of colour.

On page 7 are two photographs of the Tropical House — the upper one being taken soon after the opening in June 1964 and the lower one taken last month. Some idea of the rapid growth of vegetation can be obtained by comparing these two photographs.



K. W. Green, A.R.P.S.

TROPICAL HOUSE, JUNE 1964



K. W. Green, A.R.P.S.

TROPICAL HOUSE, OCTOBER 1966

GUIDE TO ZOOLOGICAL GARDENS

ANIMAL FEEDING TIMES

LIONS—3 p.m. except Fridays

SEA LIONS—2-40, 3-40, 4-40 p.m.

BEARS—3-15 p.m.

POLAR BEARS—4-0 p.m.

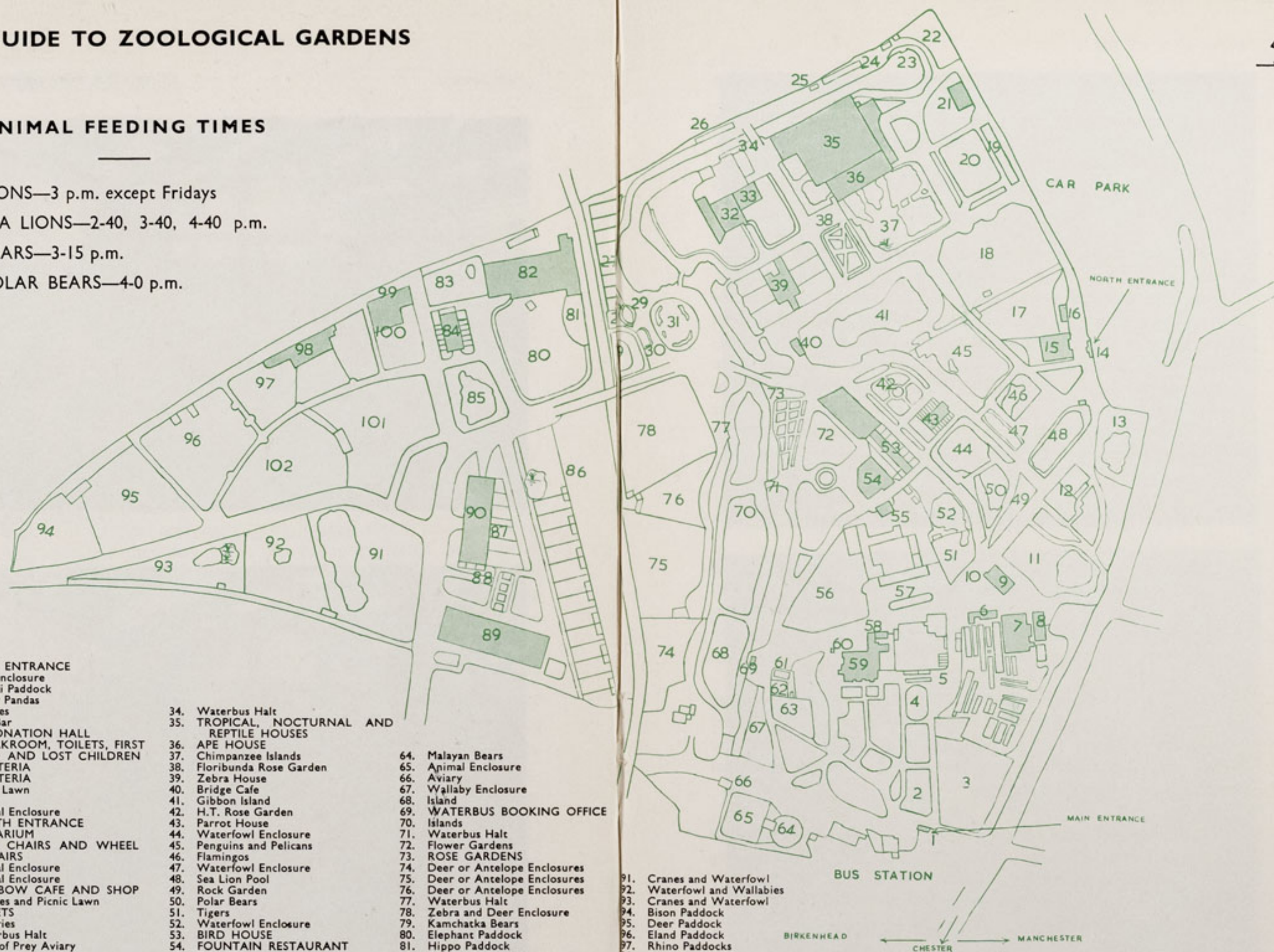
1. MAIN ENTRANCE
2. Bird Enclosure
3. Wapiti Paddock
4. Lesser Pandas
5. Aviaries
6. Milk Bar
7. CORONATION HALL
8. CLOAKROOM, TOILETS, FIRST AID AND LOST CHILDREN
9. CAFETERIA
10. CAFETERIA
11. Picnic Lawn
12. Bears
13. Animal Enclosure
14. NORTH ENTRANCE
15. AQUARIUM
16. PUSH CHAIRS AND WHEEL CHAIRS
17. Animal Enclosure
18. Animal Enclosure
19. RAINBOW CAFE AND SHOP
20. Aviaries and Picnic Lawn
21. TOILETS
22. Peccaries
23. Waterbus Halt
24. Birds of Prey Aviary
25. Birds of Prey Aviary
26. Owls
27. Jackal Enclosures
28. Wolverines
29. Porcupines
30. Coypus
31. Beavers
32. Giraffe House
33. Camel House

34. Waterbus Halt
35. TROPICAL, NOCTURNAL AND REPTILE HOUSES
36. APE HOUSE
37. Chimpanzee Islands
38. Floribunda Rose Garden
39. Zebra House
40. Bridge Cafe
41. Gibbon Island
42. H.T. Rose Garden
43. Parrot House
44. Waterfowl Enclosure
45. Penguins and Pelicans
46. Flamingos
47. Waterfowl Enclosure
48. Sea Lion Pool
49. Rock Garden
50. Polar Bears
51. Tigers
52. Waterfowl Enclosure
53. BIRD HOUSE
54. FOUNTAIN RESTAURANT
55. TOILETS
56. Lions
57. NEW ZOO SHOP
58. TOILETS
59. OAKFIELD RESTAURANT
60. G.P.O. Telephone Kiosk
61. Animal Enclosure
62. Animal Enclosures
63. Cheetahs

64. Malayan Bears
65. Animal Enclosure
66. Aviary
67. Wallaby Enclosure
68. Island
69. WATERBUS BOOKING OFFICE
70. Islands
71. Waterbus Halt
72. Flower Gardens
73. ROSE GARDENS
74. Deer or Antelope Enclosures
75. Deer or Antelope Enclosures
76. Deer or Antelope Enclosures
77. Waterbus Halt
78. Zebra and Deer Enclosure
79. Kamchatka Bears
80. Elephant Paddock
81. Hippo Paddock
82. PACHYDERM HOUSE
83. Tapir Paddock
84. Small Mammal House
85. Waterfowl Enclosure
86. Ankole Cattle
87. Stork Enclosures
88. Monkey Enclosures
89. Cat House
90. MONKEY HOUSE

91. Cranes and Waterfowl
92. Waterfowl and Wallabies
93. Cranes and Waterfowl
94. Bison Paddock
95. Deer Paddock
96. Eland Paddock
97. Rhino Paddocks
98. RHINO HOUSE
99. TOILETS
00. MPILA SNACK BAR
01. Antelope Enclosure
02. Antelope Enclosure

Animals may be moved from time to time.



A great number of birds have bred in this house but it is impossible to keep a record owing to the prolific vegetation. Frequently a certain species is missed for a considerable time only to reappear in far greater numbers, which proves that the birds must be breeding well.

When the building was first opened the 200 birds at liberty within the confines of the building were very much in evidence. However, this has altered with the rapid plant growth. Some of the larger species, Touracos, etc., can be seen on the higher perches but the majority of the smaller species have to be looked for. Visitors staying in the building for some time will benefit if they position themselves near to a feeding table or nectar bottles, which are to be found throughout the house. Birds will venture forth from the undergrowth to feed and can be observed at very close quarters, completely unperturbed by human beings.

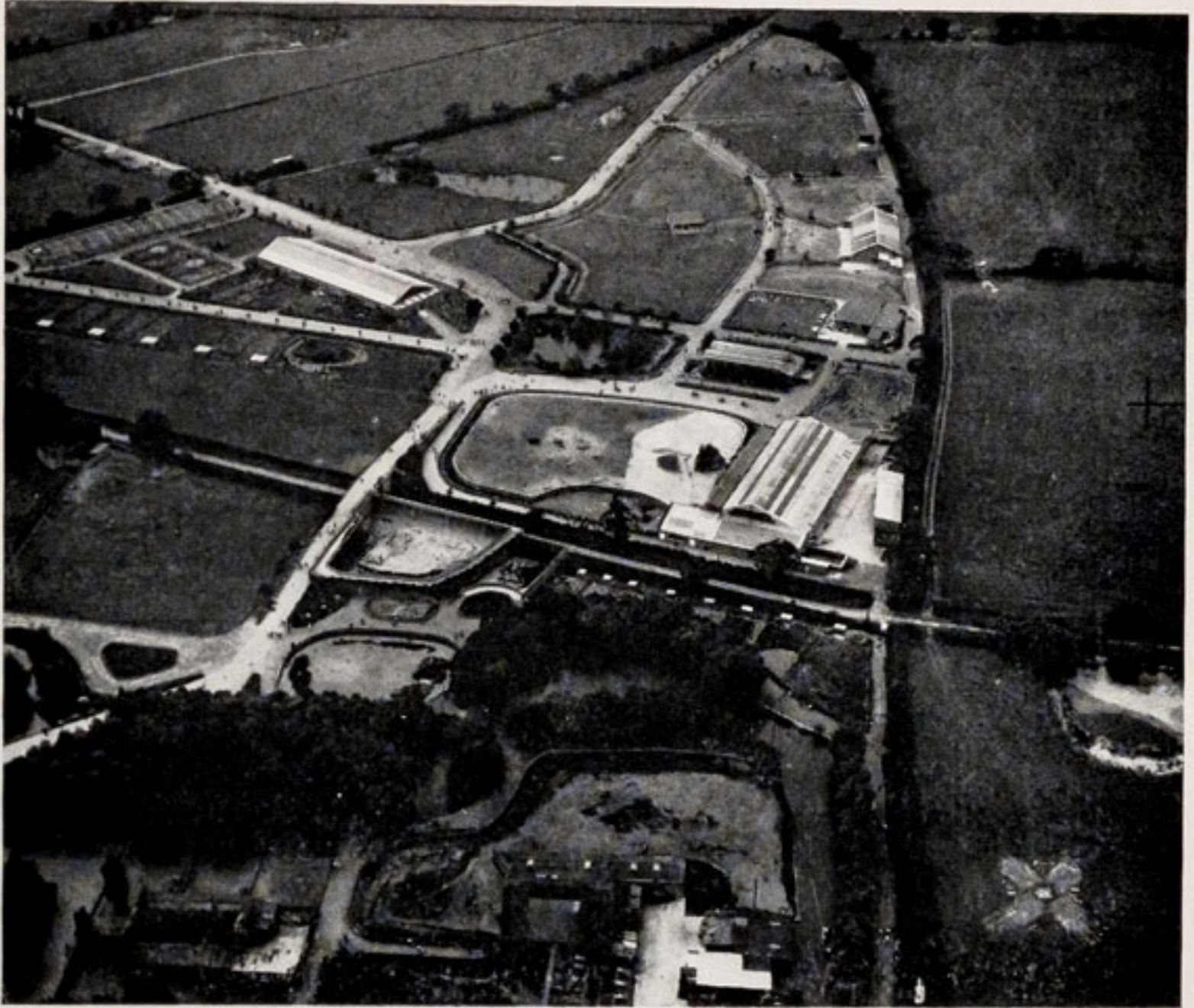
AERIAL PHOTOGRAPHS OF ZOO

Many readers of "*Chester Zoo News*" who have not visited the Zoo for some time can have no idea of the extent of the Zoo and Gardens. The Zoo and adjoining Farmland now covers nearly 200 acres. It was decided to include the aerial photographs to give an overall picture of the Zoo.

The Elephant Paddock, Eland, Rhino Paddocks, etc., Monkey and Cat Houses are clearly visible in the top part of the upper photograph on page 11. At the bottom of the picture are the Giraffe and Zebra Houses and the Waterbus ride and Canal System all are very apparent.

In the top left hand corner, a small part of the Zoo Farm can be seen; the fields to the right of the photograph are of an adjoining farm. The public right of way which cuts the Zoo in half is clearly visible and a number of people are to be seen on the Zoo's bridge, which crosses this roadway.

In the centre of the lower photograph is shown the original part of the Zoo, with the Oakfield Restaurant and to the right are



Lightfoot Bros. & Newman

TWO AERIAL VIEWS OF CHESTER ZOO

our Greenhouses and Nurseries. The Tropical House is very prominent and can be seen where the Zoo meets the Farmland at the top of the photograph, with part of the Car Park to the right of this. On the left is the Canal System with wooded islands and the ornamental gardens in front of the Fountain Restaurant. The top of this restaurant is just visible amongst the trees.

BIRD NOTES

The largest arrivals over the past month were a pair of young Rheas. These were received in an exchange deal with Adelaide Zoo, Australia, and arrived on the 15th October.

Rheas are large Ostrich-like birds, which come from the Pampas areas of Argentina and Brazil. They are the largest birds in the New World, but are considerably smaller than the African Ostrich, and are completely flightless, relying on swiftness of foot to escape from their enemies. This proved quite adequate until about one hundred years ago when farmers moved into the Pampas. Thousands of Rheas were killed and their feathers used for feather dusters.

The two Rheas were hatched in Australia during May 1966. They have been accommodated in the Camel House where they have heated quarters for the winter, but will be transferred to an outside paddock for the spring.

Other species to arrive during the month which have been released in the Tropical House include Scarlet, Silver Blue and Superb Tanagers, Delamere's Giant and Broad-tailed Whydahs, an American Red-winged Blackbird and a Golden-fronted Fruitsucker.

With the end of the year not too far away it is now time to assess whether this has been a good breeding season or not. In actual fact 1966 has been a very successful year with as far as we



RHEAS

S. W. Jacobsen, Liverpool Daily Post

know twenty species of birds being hatched and reared; we do not include Budgerigars or Canaries in this list.

The most exciting hatchings were of the Sclater's Crested Curassows. Kiskadee Flycatchers and Hybrid Pagoda X Grey-headed Mynahs were also reared in the Temperate Bird House.

In the Tropical House Scarlet Tanagers were hatched and several other species have obviously bred, but as the vegetation becomes thicker, the finding of the nest and observation of the young becomes increasingly difficult.

Our Spotted Eagle Owls and Great Eagle Owls have bred again this year and three young from each species were reared.

Several Geese and Ducks have been hatched in the Zoo Incubator and the following species were reared successfully: Barnacle, Emperor, Chinese and Lesser Snow Geese and Muscovy Ducks. Three Californian Quail were also hatched in this incubator.

Many of the Parrakeets and similar species are rather difficult to breed, especially in zoos where there are so many visitors during the breeding season. Parrakeets seem very nervous birds, but quickly settle down in the Bird House Aviaries (No. 53 on the Plan). This year we bred 1 Derbyan, 8 Red-rumped, 2 Pennants, 3 Barrabands and 4 Golden-mantled Rosella Parrakeets, 1 Scaly-breasted Lorikeet, 9 Cockatiels and a Peach-faced Lovebird.



M. F. Coupe

GOLDEN-FRONTED FRUITSUCKER

NOTES ON COVER PHOTOGRAPH

The Giraffe featured on this month's cover photograph is a female called "Debbie". The photograph was taken from a ten foot high roof at the edge of the Giraffe paddock and an impression of a Giraffe's view at Chester Zoo can be obtained. "Debbie" arrived from Africa during October 1959, where she had been hand reared by the Graham's at Athi River. She has always been a great favourite with her keepers. On Good Friday, 8th April, 1966, "Debbie" gave birth to a calf which was named "Godfrey". This name was selected from a large number of entries submitted to the "NAME THE GIRAFFE" competition featured in the "*Chester Chronicle*".



GREAT EAGLE OWL

E. Kirkland, F.R.P.S.



Printed in England by
G. R. Griffith Ltd.
Castle Printing Works
Chester
