



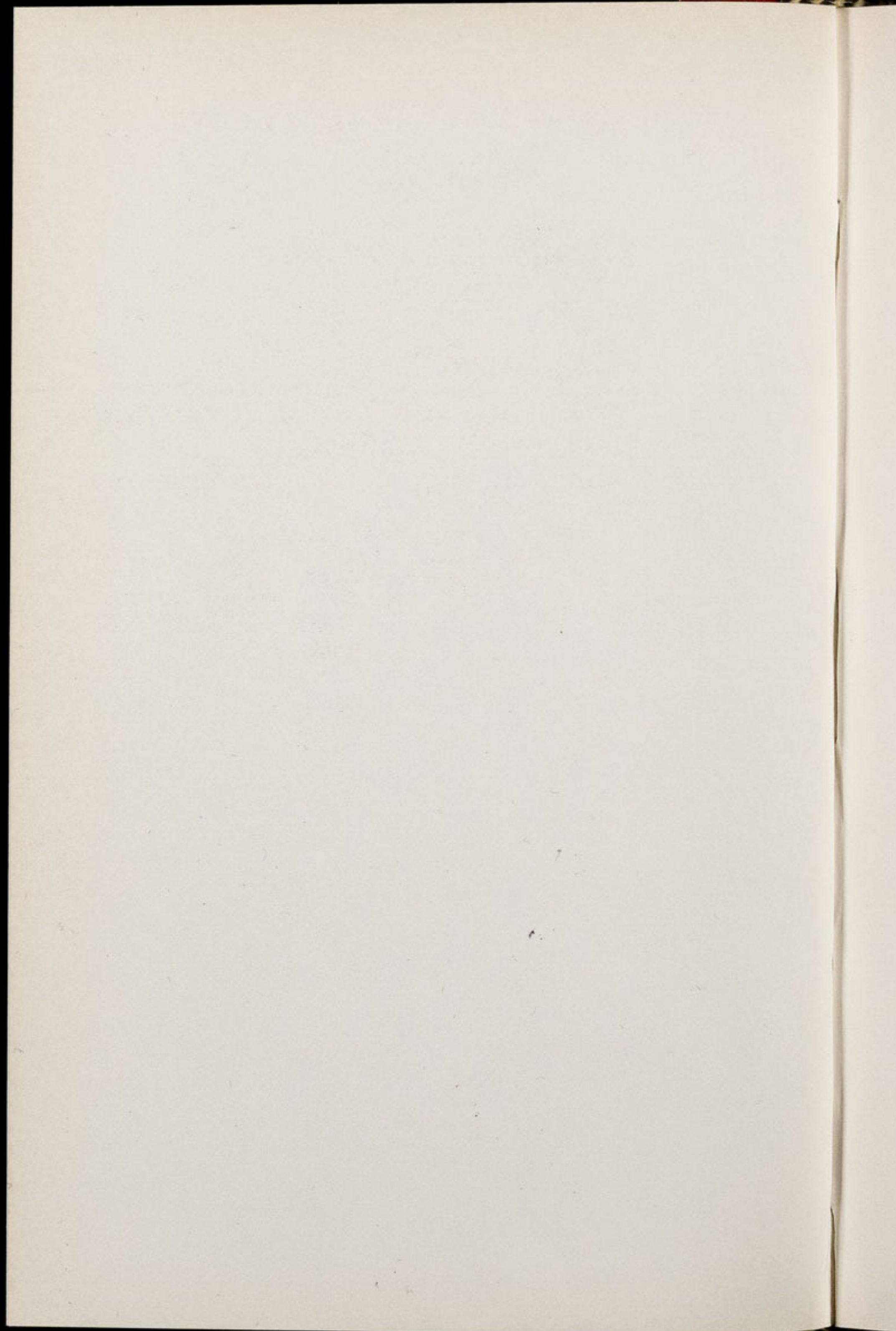
Chester Zoo News

AND GUIDE

THE NORTH OF ENGLAND ZOOLOGICAL SOCIETY
ZOOLOGICAL GARDENS, UPTON-BY-CHESTER

May 1980

Price 15p



The North of England Zoological Society

ZOOLOGICAL GARDENS, UPTON-BY-CHESTER

COUNCIL

PROF. J. O. L. KING, Ph.D., M.V.Sc., B.Sc.(Agric.), F.R.C.V.S., F.I.Biol.
G. R. PRYOR, C.Eng. (Vice-Chairman) (Chairman)
J. N. WILSON
J. A. KILPATRICK, M.B., Ch.B., F.R.C.S.E.
F. MOSFORD
H. D. COOPER, F.I.M., A.I.B.
A. J. BLAND, Dipl.Arch.R.I.B.A.
R. P. OWEN, A.R.I.C.S.
MRS. B. H. IRVINE
F. S. CARSON, M.C., B.A.(Cantab.)
DR. J. E. D. CHARLES-JONES, M.B., BS., M.R.C.G.P.
DINAH, LADY TOLLEMACHE
W. KELSALL, O.B.E., Q.P.M.
DR. J. R. BAKER, Ph.D., B.V.Sc., M.R.C.V.S.
L. C. YOUNG, B.Sc.(Econ.)
DR. M. R. BRAMBELL, Ph.D., M.A., Vet.M.B., M.R.C.V.S. (Director)

CONTENTS

<i>page two</i>	The Western Grey Kangaroo
<i>page five</i>	Gardening Notes
<i>page six</i>	The Leopard
<i>pages eight/nine</i>	Zoo Guide
<i>page eleven</i>	Visit by "The Weekly News"
<i>page sixteen</i>	Members' News and Subscriptions

ILLUSTRATIONS

<i>page three</i>	Western Grey Kangaroo
<i>page seven</i>	The Leopard
<i>page twelve</i>	"Jubilee"
<i>page thirteen</i>	Joanna and Orang-utans
<i>page fourteen</i>	Derek Lyon, Joanna and Nick Ellerton with Agile Wallaby
<i>page fifteen</i>	Vet. Derek Lyon and Joanna with Arabian Gazelles

COVER

Lemur and Twins

By courtesy of Peter Wilcock, Daily Star

Annual subscription — Three Pounds, postage paid
Telephone Chester 20106

THE WESTERN GREY KANGAROO

The following article was written by Keeper Clive Norris, who has worked at Chester Zoo for a year.

Australia is home for many strange mammals, and one such mammal, pictured on their national coat-of-arms, is the Kangaroo.

Here at Chester Zoo we have two species of Kangaroos; these are the Red Kangaroo (*Macropus rufus*) and the Western Grey Kangaroo (*Macropus fuliginosus*).

We have been successful in breeding both species and in Enclosure 68 can be seen our Western Grey group, consisting of two males and two females, both with young which were both born at the Zoo and are still dependant on their mothers. Frequently, whilst still in their mother's pouch, the young will pop their heads out to see what is going on around them. Also, they are still dependant on their mother for milk, until they are fully weaned off at about six months after leaving the pouch; this is why sometimes you will see the young going back to their mother and putting their heads into the pouch even when they are quite large.

The Western Grey Kangaroo belongs to the family which includes all Kangaroos and Wallabies, called Macropodidae, meaning having large feet, which is certainly true of all these animals. The distribution of this species ranges from south western New South Wales and Victoria right across to the southern part of Western Australia.

The Western Grey Kangaroo can vary considerably in colour from reddish brown through greyish-brown to grey, but greyish-brown is most common, with a lighter shade of grey to white on the abdomen, inside the legs and around the eyes. They have large ears with a small patch of white hair on the inside of the ear; they also



By courtesy of G. Crowther, Daily Mirror
WESTERN GREY KANGAROO

have large powerful hind legs and tail. The tail helps them to balance when in motion.

The males are much larger than the females. Our two males can be seen fighting from time to time, holding on to their opponent's shoulders with their short fore-legs and kicking at each other with their hind legs, whilst balancing on their tails.

The Western Grey Kangaroo can measure up to 64 inches head and body length, and the tail can be up to 44 inches. Their life span in captivity is usually 15 to 18 years but sometimes longer. The gestation period is between 27 and 37 days, at the end of which an embryonic youngster is born and has to make its way, unaided, up to its mother's pouch. Once in the pouch, it clings to one of its mother's teats with its mouth and will stay in the pouch for the next eight or nine months; as it grows, it becomes more and more like a miniature adult and towards the end it will start to appear out of the pouch.

In the wild they live in reasonably vegetated regions, feeding on soft grasses and herbs. Here at Chester Zoo they are fed the following diet: apples, bananas, lettuce, cabbage, carrots, also a concentrate mix (consisting of rolled oats and barley, flaked maize, Dairicon pellets, bran, sugar beet pulp, mineral mixture, salt, limestone flour) and a Vitamin E supplement powder in the food. Also they get hay and, of course, they have grass in the paddock.

In Australia they are hunted in much the same way as foxes are hunted in this country, using dogs. The Kangaroos have one way of saving themselves when being chased by dogs. They will hop into a shallow river or lake and, as the dogs follow them into the water, it is said the Kangaroos will push them under water and drown them. Their only other enemy, apart from Man, are the Dingos (Australian wild dogs) which hunt them quite successfully in packs.

GARDENING NOTES

Last February the signs were that we were going to have an early Spring and the birds gave us that feeling of encouragement. However March turned out to be cold although there wasn't too much frost, and it was very wet.

There was one night of 4°C of frost and snow fell for a short time one Sunday morning to about an inch deep, but that thawed in the afternoon. The cooler temperatures then dispelled our hopes of an early Spring. The Daffodils looked at their best in the middle of April and the flower beds will be at their best in the middle of May with the Tulips.

The *Rhododendron praecox* growing on the rockery in front of the Oakfield was a mass of flowers but they were killed on the night of severe frost.

The greenhouses are now full to capacity with the Summer bedding plants. Some of these plants have been growing from cuttings since last August and some, such as *Alyssum*, from seed sown as late as early April.

All the standard *Heliotrope* and *Lantana* are grown from cuttings rooted the previous August. About 30 new standard Fuchsia are grown each year to replace some of the older ones, which could be five or six years old. We grow a total of 240 standard Fuchsia; 1,000 various dot plants are grown in five-inch "whalehide" (an artificial material that apparently has the look of whalehide) pots and these are used in bedding schemes. This idea makes it easier for planting and better for the plant, as the Gardeners just tear the "whalehide" pot away from the roots, which will not be disturbed. Among the dot plants grown are *Abutilons*, *Aster capense*, *Centaurea*, *Calceolaria*, *Mimulus*, *Lobelia cardinalis*, *Jamaican primrose* and *Salvia albigens*.

Many of the plants on the rockeries are now in flower. Among these are the *Antennaria dioica candida* with white flowers and silvery foliage growing flat on the ground. Another variety, *Rosea* has rosy-red flowers. The common name is Cotton Weed, the hairs attached to the seed resembling cotton. *Arabis alpina rosea* is a double flowering white variety. Both these spread rapidly and we propagate them from cuttings. The common name is Wild Cress.

Armeria maritima alba (white) and *Vindictive* (deep pink) are both about four inches high. The name *Armeria* comes from the Celtic Ar—"near" and Mor—"the sea". The common name of Thrift or Sea Pink may be more familiar. This plant with its narrow fresh green leaves will grow well by the sea and in "dry" walls.

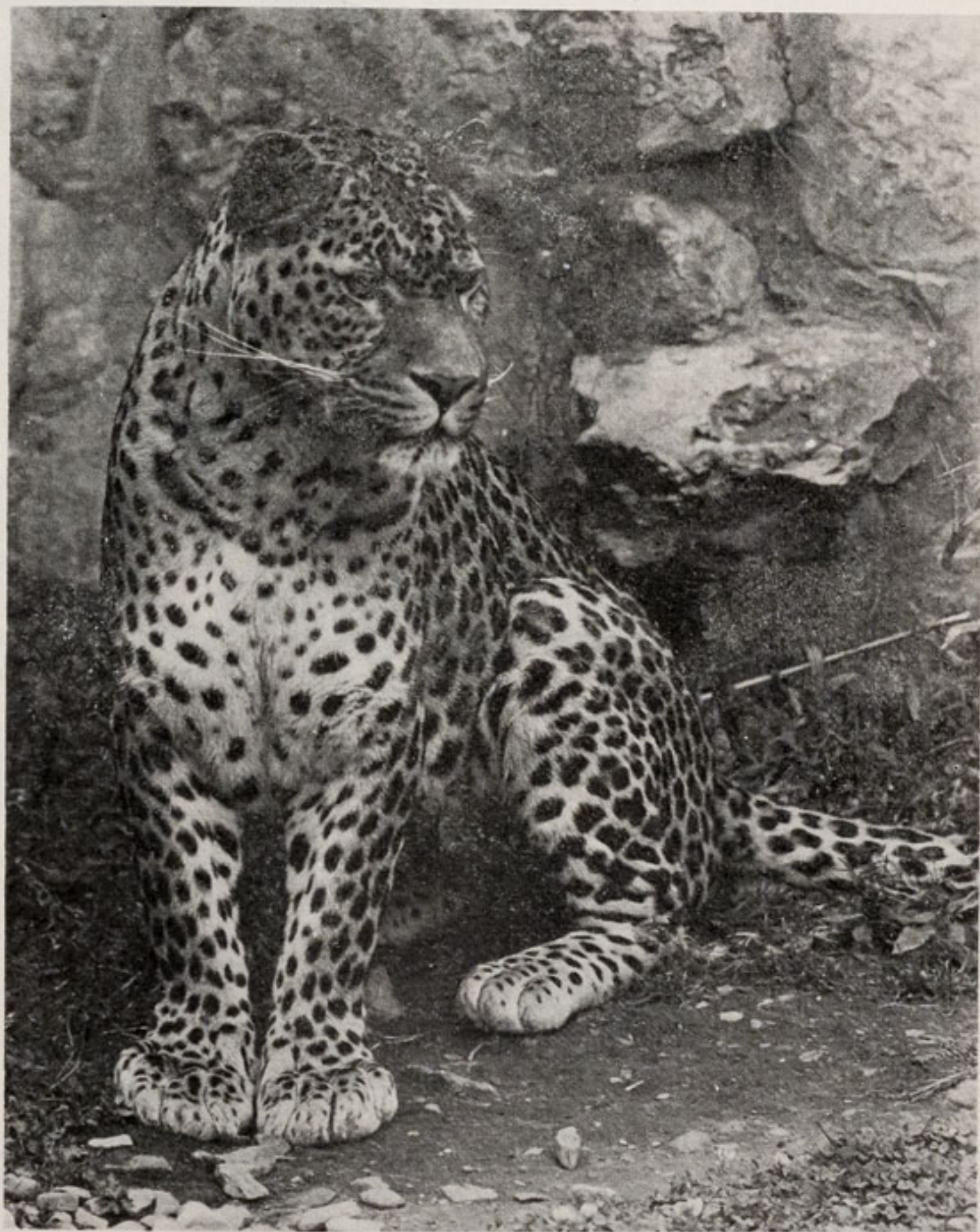
Cotyledon simplicifolia is partly succulent and is suitable for a dry part in a rockery. The flowers are yellow. Varieties of *Helianthemum* the Rock Rose or Sun Rose will be in flower among them the Wisley Pink, Ben Dearg, Ben Nevis and Venustum. The name *Helianthemum* comes from Greek *Helios*—"the sun" and *Anthemom*—"a flower".

Iberis the perennial Candytuft, is very showy with its white flowers. Our variety is Little Gem, which grows to about three inches high. *Iberis* comes from Iberia, the ancient name for Spain, where many species of this genera are common.

Mimulus, variety Whitecroft Scarlet, is suited to a wet part of the rockery and under the right conditions will spread very rapidly. This variety flowers throughout the Summer and is four inches high. The common name is Monkey Flower, the flowers resembling a monkey's face. *Luteus* is the species of the common Monkey Flower, which grows to about twelve inches high.

THE LEOPARD

We have recently had our first Leopard (*Panthera pardus*) birth for 1980. Our collection already consists of 13, which includes four Common, or Spotted Leopards, five of the melanistic form known as Black Panthers and three North Chinese Leopards.



By courtesy of J. Whitworth

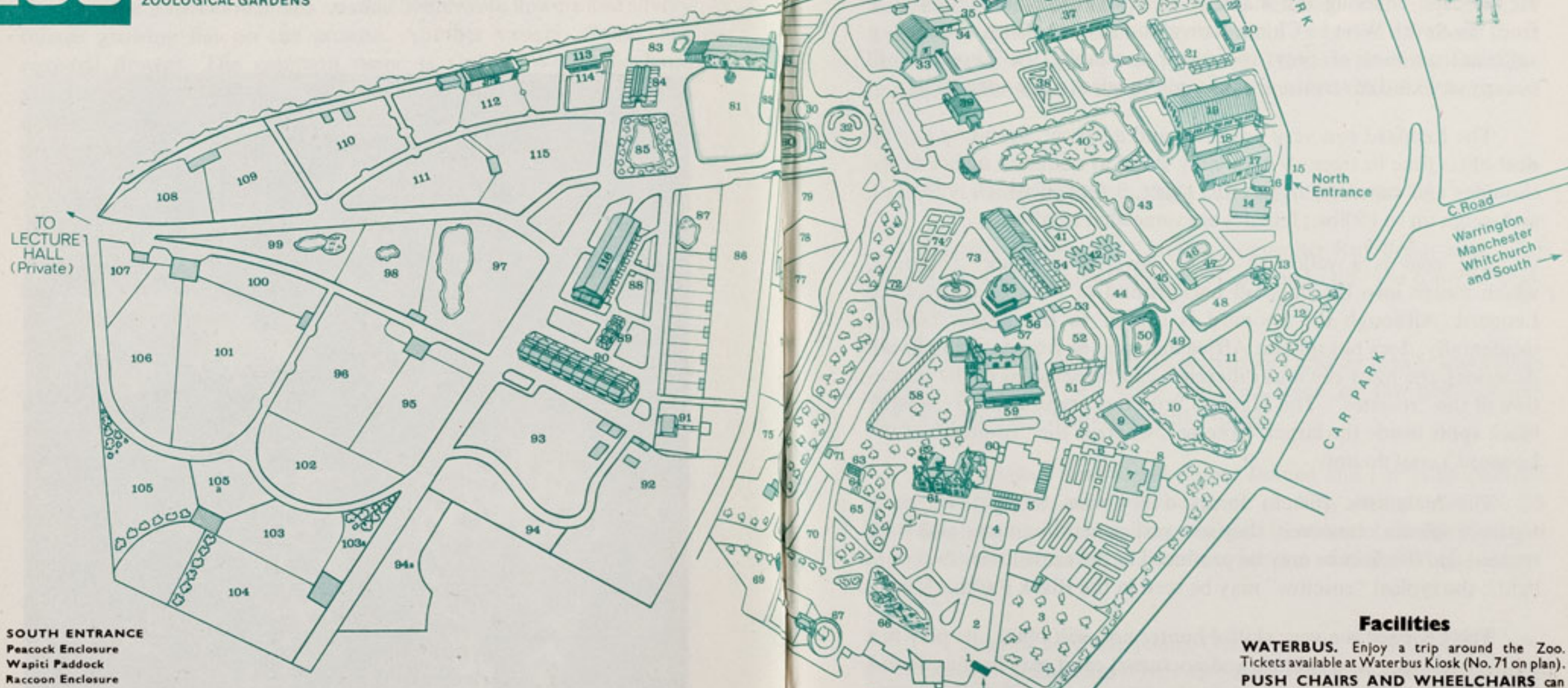
LEOPARD

CHESTER ZOO

THE NORTH OF ENGLAND
ZOOLOGICAL SOCIETY
ZOOLOGICAL GARDENS

FOR A COMPLETE TOUR OF THE ZOO — Follow Nos 1-116 South Entrance or Nos. 16-116 from North Entrance then return to Nos 1-14

Chester Zoo is Open Daily from 10a.m.



1. SOUTH ENTRANCE

2. Peacock Enclosure
3. Wapiti Paddock
4. Raccoon Enclosure
5. Aviaries
6. Milk Bar
7. CORONATION HALL
8. CLOAKROOM, FIRST AID, TOILETS, INVALIDS' TOILETS, MOTHER AND BABY ROOM
9. CAFETERIA
10. Picnic Lawn
11. Ornamental Garden (under construction)
12. Jubilee Gardens (Noah)
13. Kiosk
14. AQUARIUM
15. NORTH ENTRANCE
16. PUSH CHAIRS, WHEEL CHAIRS, LOST CHILDREN
17. PARROT HOUSE
18. Free Flight Aviary
19. APE HOUSE
20. Shop and Kiosk
21. Aviaries and Picnic Lawn
22. CLASSROOM
23. TOILETS
24. TUATARA EXHIBIT
25. Peccaries
26. Birds of Prey Aviaries
27. Condor Aviary
28. Jackal and Hyena Enclosures
29. Animal Enclosure
30. Porcupine Enclosure
31. Coypus
32. Beavers
33. Giraffe House

34. Camel House
35. Giant Tortoise Paddock
36. TROPICAL AND REPTILE HOUSES
37. CHIMPANZEES
38. Floribunda Rose Garden
39. Zebra House
40. Waterfowl Island
41. H.T. Rose Garden
42. Aviaries
43. Flamingos
44. Waterfowl Enclosure
45. Waterfowl Enclosure
46. Tapir Enclosure
- 47.
48. Sealions
49. Rock Garden
50. Polar Bears
51. Big Cat Enclosure
52. Waterfowl Enclosure
53. Capybara
54. BIRD HOUSE
55. FOUNTAIN RESTAURANT
56. Ape Nursery
57. TOILETS
58. Lions
59. SOUVENIR SHOP
60. TOILETS
61. OAKFIELD RESTAURANT & G. S. Mottershead Memorial Gds

62. P.O. Telephone
63. Gibbons
64. Arctic Fox Enclosure
65. Serval Enclosure
66. Ornamental Rock Garden
67. Wallabies and Kangaroos
68. Kangaroo Enclosure
69. Animal Paddock
70. Cheetahs
71. WATERBUS BOOKING OFFICE AND KIOSK
72. Rose Gardens
73. Fountain Flower Gardens
74. Rose Garden
75. Red Lechwe
76. Red Lechwe
77. Deer or Antelope Enclosure
78. Zebra and Deer Enclosure
79. Zebra and Deer Enclosure
80. Brown Bears
81. ELEPHANTS
82. Hippos
83. Tapirs
84. Small Mammal House
85. Waterfowl Enclosure
86. Ankole Cattle
87. Emus, Cranes and Flamingos
88. Outside Monkey Enclosures
89. Baboon Pens
90. Cat House
91. Tiger Enclosures

92. Antelope Enclosure
93. Antelope Enclosure
94. Reindeer Enclosure
- 94a. Llamas
95. Antelope Paddock
96. Antelope Paddock
97. Waterfowl Enclosure
98. Waterfowl and Deer
99. Waterfowl Enclosure
100. Blackbuck
101. Wallabies
102. Ostrich
103. Wallabies
- 103a. Animal Enclosure

104. Pere David's Deer Paddock
105. Przewalski's Horses
- 105a. Onager
106. Arabian Gazelles
107. Guanaco
108. Bison
109. Pere David's Deer Paddock
110. Prairie Marmots, Alpacas
111. Antelope Enclosure
112. RHINOS
113. TOILETS
114. Mpila Snack Bar
115. Antelope Enclosure
116. MONKEY HOUSE

Facilities

WATERBUS. Enjoy a trip around the Zoo. Tickets available at Waterbus Kiosk (No. 71 on plan).
PUSH CHAIRS AND WHEELCHAIRS can be hired near the NORTH ENTRANCE (No. 16 on plan).
LOST CHILDREN are taken to building No. 16 on plan.
FIRST AID Cloakroom (No. 8 on plan).
TOILETS. Invalids' Toilets (No. 8 on plan).

Catering

OAKFIELD RESTAURANT (Table Licence)—No. 61 on plan.
 FOUNTAIN RESTAURANT (Unlicensed)—No. 55 on plan.
 CORONATION HALL (for Party Catering)—No. 7 on plan.
 CAFETERIA (Self Service)—No. 9 on plan.
 MPILA SNACK BAR (Light Meals)—No. 114 on plan.
 RAINBOW KIOSK (Picnic Lawn adjoining)—No. 20 on plan.
 Undercover facilities for visitors wishing to eat their own food are provided either at the CORONATION HALL No. 7 or the adjoining Snack Bar.
 Snack Bars and Picnic Lawns are situated throughout the ZOO

Feeding Times

LIONS—3 p.m. except Fridays
 SEA LIONS—3 times daily—2.30 p.m.—3.30 p.m.—4.30 p.m.

ANIMALS MAY BE MOVED FROM TIME TO TIME

The Leopard has the most extensive geographical distribution of all the cats, covering the majority of Africa, and inhabiting Asia from the South West to China, Korea and Java. As long as there is a sufficient amount of prey and water available, the Leopard will occupy any kind of terrain, from humid jungles to dry open lands.

The Leopard is a very powerful and agile cat, spending a great deal of its time in trees. A male may stand at about 28 inches at the shoulder and can measure up to $7\frac{1}{2}$ feet, 3 foot of which is the tail, and weigh up to 150lbs.; females are somewhat smaller.

The coat is a yellowish colour covered in black "rosettes", which merge into the dappled background of trees to conceal the Leopard. Although the Leopard is similar to the Jaguar (which, incidentally, does not inhabit Africa and may be found only in South America), the most obvious difference can be detected in the formation of the "rosettes". The Jaguar's "rosettes" typically have smaller black spots inside the larger "rosette", whereas the "rosettes" of the Leopard's coat do not.

The melanistic (black) forms were once thought to be a separate species; however, they are just genetic variants and both spotted and black cubs may be produced in the same litter. In certain lights, the typical "rosettes" may be seen in the Black Panther's coat.

The Leopard is a very skilful hunter and will obtain its prey in a number of ways. As a solitary and nocturnal cat it may lie in wait on a branch, from where it can drop on its victim, or it will stalk its prey. The diet consists of anything from birds to antelopes and it has helped somewhat to control numbers of baboons which invade domestic crop areas.

After the Leopard has eaten it will lodge the remains in a tree. They have been known to carry great weights up trees to keep them from Hyaenas and Jackals, which would devour the remains of the kill in the Leopard's absence.

Occasionally, the Leopard will prey on domestic stock and even dogs, and hideous stories have been recounted of humans being "spirited" away in the night by this stealthy hunter. However, they normally avoid Man and only sick or injured animals unable to hunt stronger prey species turn to the confined stocks of farms or Man.

Territory is marked with urine, droppings and scratch trees. Although usually solitary, males and females often stay together during the mating season. After a gestation period of about three months, the litter of 2 to 4 cubs is born. They are blind until they are about nine days old and full size is not attained until 3 or 4 years of age.

VISIT BY "THE WEEKLY NEWS"

Reporter Joanna and Chief Photographer Roy Broome of "The Weekly News" recently visited Chester Zoo to do "the rounds" with Vet. Derek Lyon.

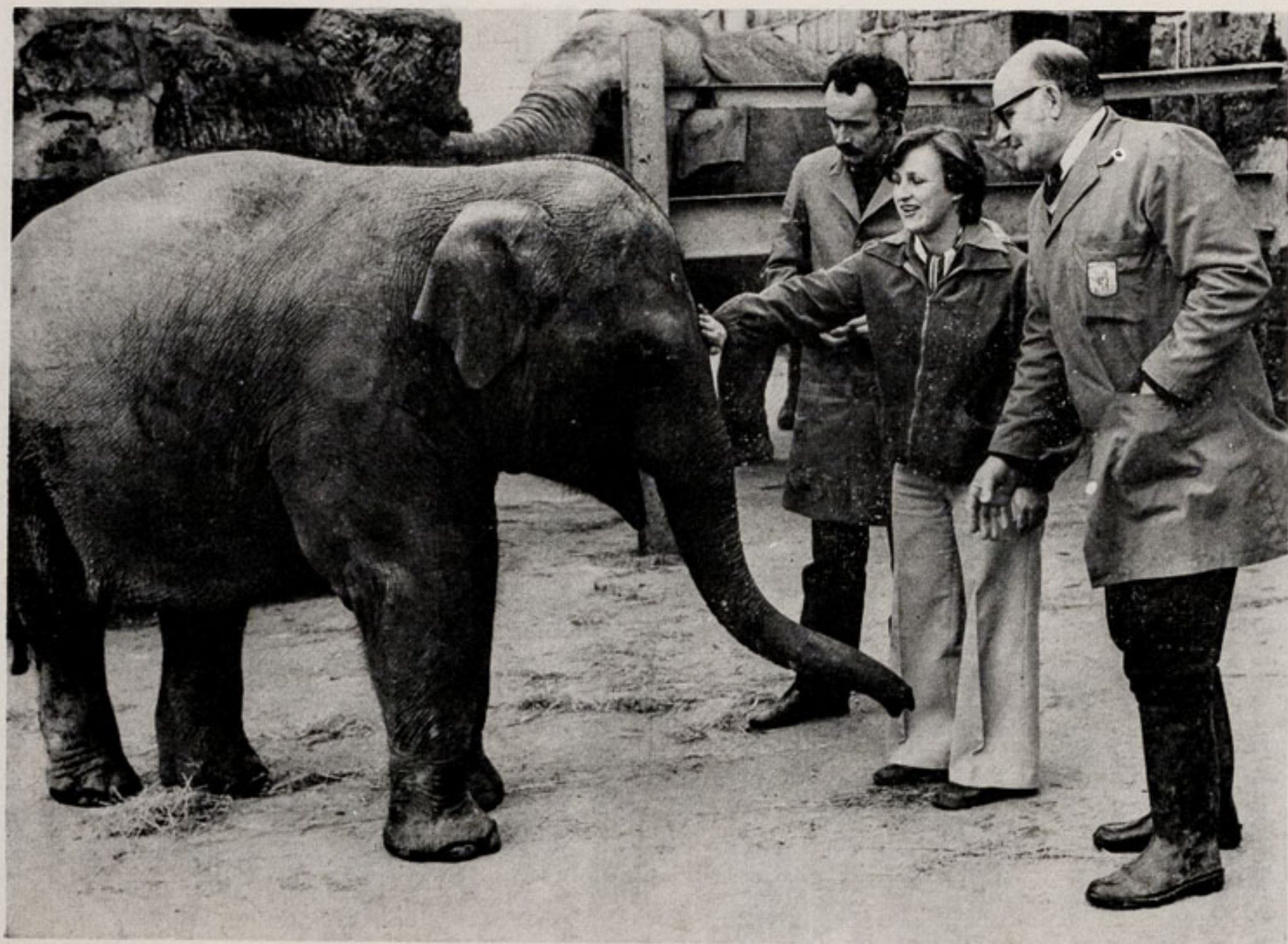
A number of photographs were taken and an article was subsequently produced. We have included some of the photographs which we thought readers may like to see.

"Jubilee" with Derek Lyon, Joanna and Les Hills (Section Officer). "Jubilee" will be three in May and a visit to the Elephant Paddock was necessary to treat one of the females who had been the unfortunate target for one of his tusks. (Enclosure No. 81).

Joanna with the young Orang-utans, "Sibu", "Datu" and "Karau". (Enclosure No. 19—Ape House, where adults may also be seen.)

A dressing is removed from the injured tail of an Agile Wallaby. Joanna and Assistant Curator of Mammals Nick Ellerton hold the patient steady.

No visit to Chester Zoo would be complete without seeing the Arabian Gazelles. Three females, "Yasmin", "Tabitha" and "Soraya" were hand-reared by Staff and the last two are shown in the picture on page 15. As our regular readers already know, we have had considerable success in the breeding and care of these beautiful gazelles and are very proud of our collection of 20, three of which were born this year. (Enclosure Nos. 68, 88 and 106.)



"JUBILEE"

By courtesy of R. Broome



JOANNA AND ORANG-UTANS

By courtesy of R. Broome



DEREK LYON, JOANNA AND NICK ELLERTON WITH AGILE WALLABY

By courtesy of R. Broome



JOANNA AND VET. DEREK LYON WITH ARABIAN GAZELLES

By courtesy of R. Broome

MEMBERS' NEWS

The April Meeting of the Members of the North of England Zoological Society was held on Saturday, 19th April. Unfortunately, the speaker who had hoped to come was unable to do so at the last minute and Dr. Brambell, the Director, gave a talk entitled "Mammals". A Buffet Luncheon was also held for the Members in the Oakfield Restaurant.

We would like to take this opportunity of reminding Members that the Annual General Meeting of the Society will be held on Saturday, 31st May, 1980 at 3.30 p.m.

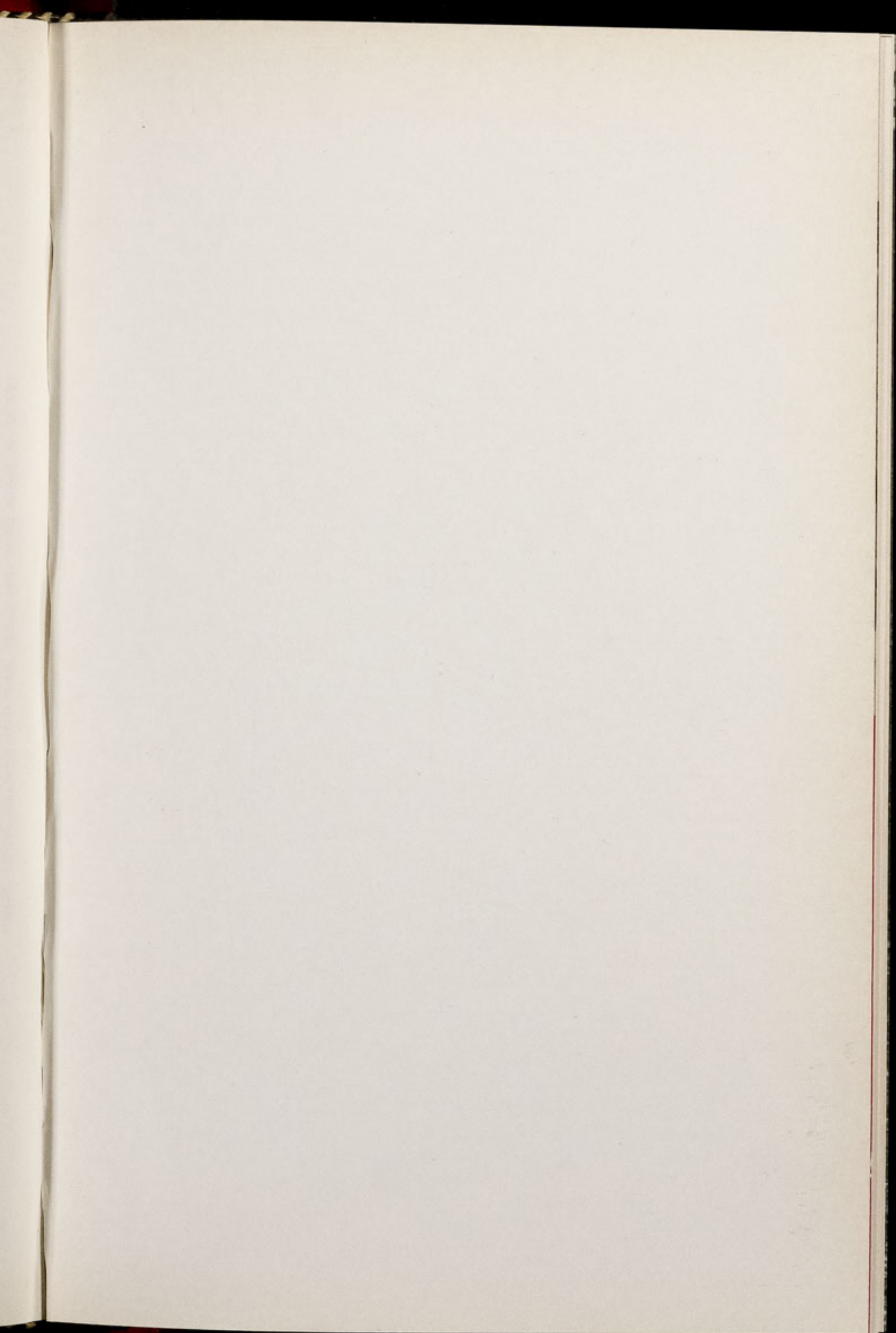
The programme of Members' Meetings for the 1980/81 season will be forwarded later in the year.

Any readers interested in becoming Members of the Society should write to the Membership Office. Junior Membership is open to youngsters aged from 12 to 18.

SUBSCRIPTIONS

CHESTER ZOO NEWS is at present being produced every month and readers who would like to receive the magazine regularly can obtain subscription forms at the Souvenir Shops or the Office. The current charge for 12 issues including postage is £3.00 per year.

Completed forms can be handed in to the Souvenir Shops or posted to Chester Zoo News, Chester Zoo, Chester.



Printed in England by
W. H. Evans & Sons Ltd.
Sealand Road Trading Estate
Chester