



By Courtesy of Gary Talbot.

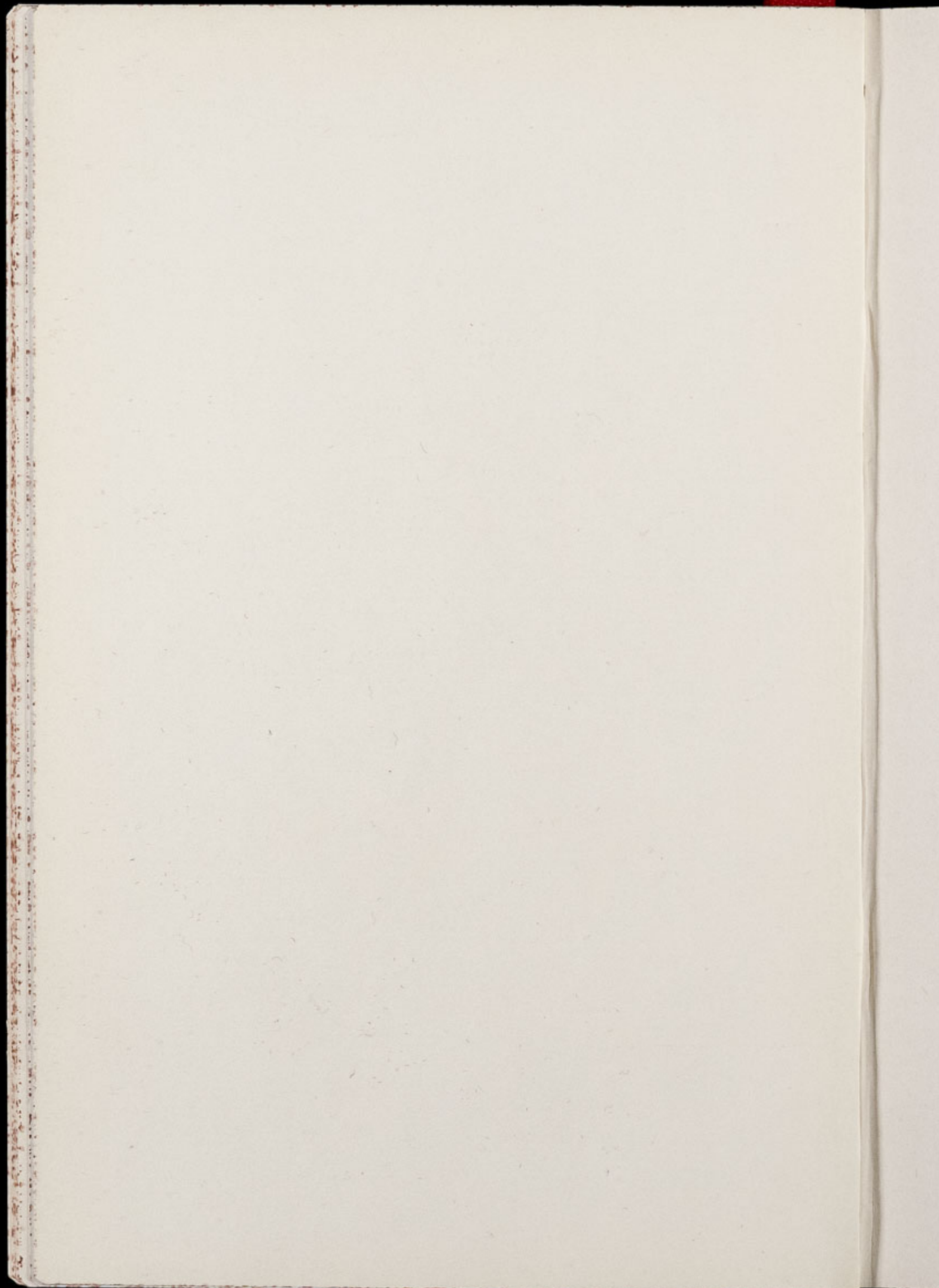
Chester Zoo News

AND GUIDE

THE NORTH OF ENGLAND ZOOLOGICAL SOCIETY
ZOOLOGICAL GARDENS, UPTON - BY - CHESTER

February 1967

Price 1/-



Editorial

This winter has been extremely mild and we are hoping it will continue this way. Many of the plants are budding and crocuses and daffodils have been flowering for some time now.

A number of birds have shown signs of going to nest and the various species have been paired for the forthcoming breeding season.

CONTENTS:

<i>page two</i>	Arrivals and Births.
<i>page four</i>	Elephants during the Winter.
<i>page six</i>	Monitor Lizards.
<i>page eight/nine</i>	Zoo Guide.
<i>page ten</i>	Bird Notes.
<i>page twelve</i>	Blue-winged Siva.
<i>page fifteen</i>	Labelling.
<i>page sixteen</i>	Surplus Animals.

ILLUSTRATIONS:

<i>page three</i>	Talapoin Monkeys.
<i>page five</i>	Breaking the Ice.
<i>page eleven</i>	Two Banded Monitor.
<i>page thirteen</i>	Emus.
<i>page fourteen</i>	Blue-winged Siva.

COVER: This month's cover photograph shows "Nobby" our 3½ year old Indian Elephant. For further details see page 4.

ARRIVALS AND BIRTHS

A Talapoin Monkey was born on January 27th in the Monkey House and another is due in the near future. Talapoin Monkeys have been born in this country before but as far as we know have not been reared to maturity. Our youngster seems fit and the Mother is taking great care of him so we are hopeful of success. Both Mother and Baby are very shy indeed, so for the first two weeks we had to prohibit the use of 'flash' when taking photographs of these animals.

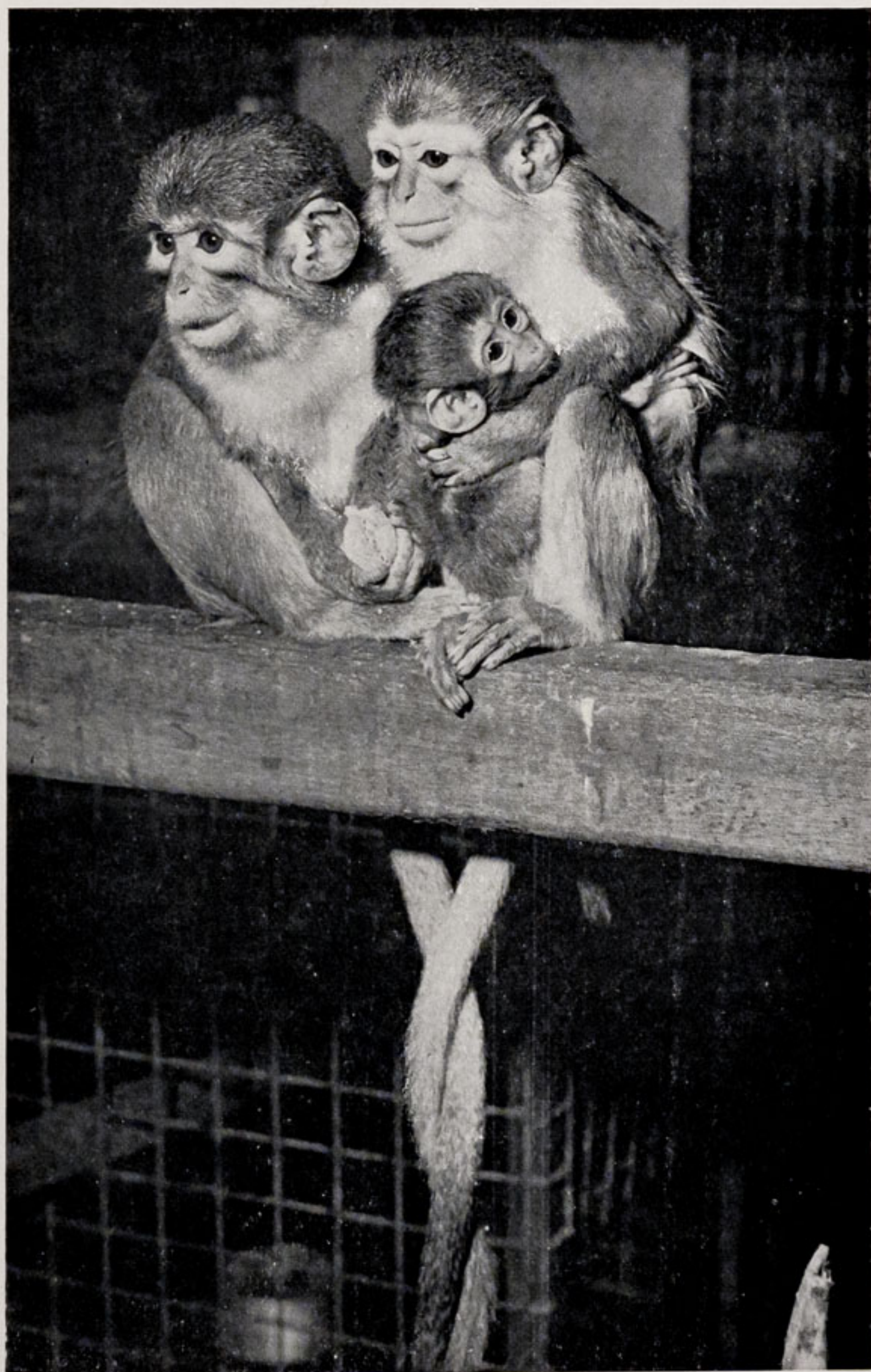
Talapoin Monkeys are found in the forest areas of the West and Central Congo Basin and also in the Mt. Ruwenzori region of Central Africa. They are generally classified as *Cercopithecus talapoin* but due to some differences from other Guenons or *Cercopithecus* Monkeys, have sometimes been classified as *Miopithecus talapoin*. Talapoin Monkeys are about half the size of the Green Monkey, the most common species of Guenon. The colour is said to be somewhat variable but our Talapoins are a darkish yellow with a tinge of green.

Little is known about the habits of Talapoin Monkeys in the wild state but it is obvious from keeping them at the Zoo that they are very quick and agile.

A very welcome addition to the Nocturnal House was the arrival of three pairs of Gerbils or Desert Rats. These animals are similar to the better known Jerboas. The Jerboa has very long hind legs and can spring short distances, whereas Gerbils have much shorter hind legs and are less agile.

There are many species of Gerbils distributed in Africa and Asia. They are able to survive in the driest of desert regions but are also to be found in Savannah areas. Our Gerbils are the most common species (*Gerbillus gerbillus*) which is found in North Africa, from Egypt to Algeria and Northern Nigeria.

They are gregarious animals living in burrows in the sand and feeding on various roots and seeds. Gerbils have been imported



TALAPOIN MONKEYS

Gary Talbot

into this country in increasing numbers in recent times, as they make very good pets. They are very gentle indeed and are said not to bite whilst being handled.

ELEPHANTS DURING THE WINTER

Up to the time of writing, the winter has been very mild in the Chester area, but a little while ago we did have some rather hard frosts. The pool in the outside Elephant enclosure became completely frozen over but as can be seen in the photograph, this did not deter them in the least. The day before the photographs were taken, the Elephants had been observed breaking the ice, so to avoid a long wait for our photographs, a few carrots were put on to the ice as an encouragement. "Nobby" the 3½ year old Indian male, the youngest of the five, broke the ice with his forefeet and then went right in. As can be seen in the cover photograph the pool is not too deep and the young Elephant had a most enjoyable time playing with the ice. The others were rather reserved and although they looked interested, they did not go into the icy water.

All our Elephants are extremely hardy animals and spend a great deal of time outside in their acre-large paddock, even in the depths of winter. They are separated from the public by means of a ditch, the actual paddock being built up higher than the public pathways. A wide flower border acts as a protective barrier preventing visitors from coming within reach of the Elephants' trunks. This flower border looks far more attractive than a fence or railing barrier and proves just as effective. The Elephants look far healthier than those kept in a confined space and are always on the move when they are outside so they do not become cold. They also have a large centrally heated house in which they can sleep or shelter during an extremely cold day. This house is known as the Pachyderm House — Pachyderm meaning thick-skinned animals. Hippos, South American and Malayan Tapirs are also exhibited in this House; they also have an outside paddock.

At Chester Zoo the majority of the animals are given a spacious outside enclosure which they can use even in the coldest weather. Many



BREAKING THE ICE

K. W. Green, A.R.P.S.

animals which come from the Tropics can easily be adapted to our climate and are far healthier for going out of doors. In the past, Gorillas, Orang-utans and Chimpanzees were thought of as animals requiring very warm conditions and consequently were allowed outside only during warm weather. Modern Zoo thinking has altered this to a large extent. The Anthropoid Apes will not cross water and are accommodated on large moated islands, but have access to inside heated enclosures whenever required. The Chimpanzees especially can be seen outside for a considerable amount of their time, even during cold spells and have grown very long fur in comparison with Chimpanzees kept in close confinement at other Zoos.

Numerous Tropical animals including Rhinos, Lions, Eland, Wildebeeste and many others are very good examples of species which readily adapt themselves to our climate. Of course, the large outside enclosures at Chester Zoo play an important part in this, as the animals are able to move about freely. Acclimatization has to be carried out carefully; if a new Tropical animal arrives during the winter it is kept inside until spring, when it can adapt itself gradually to our climate.

MONITOR LIZARDS

Lizards of the family Varanidae, and the genus *Varanus*, are generally known as Monitors. They include the World's largest Lizard, (*Varanus komodoensis*), the Komodo Dragon from the Indonesian Island of Komodo, which attains lengths of more than twelve feet. Before this giant was discovered the record was held by the Central and North Western Australian Monitor (*Varanus giganteus*), which measures between seven and eight feet and is known by the Australian aboriginal name of Perentie.

The teeth and claws of Monitors are sharp, and the long tail may also be used as a weapon in fighting, though its principal purpose seems to be as a rudder when running and swimming; many species of Monitor are expert swimmers. They are also expert climbers, and eggs and nestling birds form an important part of their diet, though they will eat any kind of flesh, even to badly decayed carrion. In Australia Monitors have the protection of public opinion in most localities, because they eat carrion and thus help to control the blowfly.

Teeth and saliva tainted with toxins and bacteria from their food are responsible for the poisoning which often follows a bite from a Monitor; the creature does not secrete venom, as some Snakes do, though many people believe to the contrary.

Monitors shelter in hollow trees or among rocks and very often lay their large eggs in such positions. Contrary to the general custom with Lizards, the female usually guards them until they have hatched, though being cold blooded creatures, they do not sit on their eggs to incubate them. There may be as many as thirty five eggs to a clutch, with one record of a somewhat larger batch, although usually only half that number is deposited at any time. Some Monitors have learned to lay their eggs in termite ("White Ant") nests. This is accomplished during the rainy season when the nests are softened by the rain and the Lizard can easily dig into them. The termites repair their nests, sealing in the eggs under conditions admirably suitable for incubation. The hatching Monitors find no difficulty in scratching their way to freedom.

Most species of Monitor hibernate continuously through the winter months. About thirty species comprise the Monitor family which occurs only in the Old World in Africa, Asia and Australia — Australia being the home of the Monitors, with twenty three species out of the World total of about thirty. An interesting point is the fact that in this day and age a new species of Monitor was discovered as recently as 1956 in Northern Australia.

If molested, the Monitor may rise cat-like on four legs, swelling the body fiercely and hissing loudly. The tongue flickers unceasingly, and the long tail may be whipped around. The loose gular skin is puffed out, being raised by longitudinal bones when the lizard is infuriated. Running is accomplished on all fours or on both hind legs; the greatest speed reached is on four legs. When the Lizard wishes to observe its pursuer, for instance when in long grass, it runs on its hind legs.

The hides of some Monitors have great commercial value and larger species are killed in the thousands for their skins, which have small bead-like scales.

GUIDE TO ZOOLOGICAL GARDENS

ANIMAL FEEDING TIMES

LIONS—3 p.m. except Fridays

SEA LIONS—2-40, 3-40, 4-40 p.m.

BEARS—3-15 p.m.

POLAR BEARS—4-0 p.m.

- | | | |
|--|--|---------------------------------|
| 1. MAIN ENTRANCE | 34. Waterbus Halt | 64. Malayan Bears |
| 2. Bird Enclosure | 35. TROPICAL, NOCTURNAL AND REPTILE HOUSES | 65. Animal Enclosure |
| 3. Wapiti Paddock | 36. APE HOUSE | 66. Aviary |
| 4. Lesser Pandas | 37. Chimpanzee Islands | 67. Wallaby Enclosure |
| 5. Aviaries | 38. Floribunda Rose Garden | 68. Island |
| 6. Milk Bar | 39. Zebra House | 69. WATERBUS BOOKING OFFICE |
| 7. CORONATION HALL | 40. Bridge Cafe | 70. Islands |
| 8. CLOAKROOM, TOILETS, FIRST AID AND LOST CHILDREN | 41. Gibbon Island | 71. Waterbus Halt |
| 9. CAFETERIA | 42. H.T. Rose Garden | 72. Flower Gardens |
| 10. CAFETERIA | 43. Parrot House | 73. ROSE GARDENS |
| 11. Picnic Lawn | 44. Waterfowl Enclosure | 74. Deer or Antelope Enclosures |
| 12. Bears | 45. Penguins and Pelicans | 75. Deer or Antelope Enclosures |
| 13. Animal Enclosure | 46. Flamingos | 76. Deer or Antelope Enclosures |
| 14. NORTH ENTRANCE | 47. Waterfowl Enclosure | 77. Waterbus Halt |
| 15. AQUARIUM | 48. Sea Lion Pool | 78. Zebra and Deer Enclosure |
| 16. PUSH CHAIRS AND WHEEL CHAIRS | 49. Rock Garden | 79. Kamchatka Bears |
| 17. Animal Enclosure | 50. Polar Bears | 80. Elephant Paddock |
| 18. Animal Enclosure | 51. Tigers | 81. Hippo Paddock |
| 19. RAINBOW CAFE AND SHOP | 52. Waterfowl Enclosure | 82. PACHYDERM HOUSE |
| 20. Aviaries and Picnic Lawn | 53. BIRD HOUSE | 83. Tapir Paddock |
| 21. TOILETS | 54. FOUNTAIN RESTAURANT | 84. Small Mammal House |
| 22. Peccaries | 55. TOILETS | 85. Waterfowl Enclosure |
| 23. Waterbus Halt | 56. Lions | 86. Ankole Cattle |
| 24. Birds of Prey Aviary | 57. NEW ZOO SHOP | 87. Stork Enclosures |
| 25. Birds of Prey Aviary | 58. TOILETS | 88. Monkey Enclosures |
| 26. Owls | 59. OAKFIELD RESTAURANT | 89. Cat House |
| 27. Jackal Enclosures | 60. G.P.O. Telephone Kiosk | 90. MONKEY HOUSE |
| 28. Wolverines | 61. Animal Enclosure | |
| 29. Porcupines | 62. Animal Enclosures | |
| 30. Coypus | 63. Cheetahs | |
| 31. Beavers | | |
| 32. Giraffe House | | |
| 33. Camel House | | |

- | |
|-----------------------------|
| 91. Cranes and Waterfowl |
| 92. Waterfowl and Wallabies |
| 93. Cranes and Waterfowl |
| 94. Bison Paddock |
| 95. Deer Paddock |
| 96. Eland Paddock |
| 97. Rhino Paddocks |
| 98. RHINO HOUSE |
| 99. TOILETS |
| 100. MPILA SNACK BAR |
| 101. Antelope Enclosure |
| 102. Antelope Enclosure |

Animals may be moved from time to time.



In our Reptile House we have two species of Monitor represented in the collection:—the Yellow Monitor (*Varanus flavescens*) comes from South East Asia, Eastern India, Burma and the Malay Peninsular. The Two banded Monitor (*Varanus salvator*) is also to be found in South East Asia, Ceylon, Eastern India, Burma and South China, Siam, Malay Peninsula and the islands Eastwards to the Philippines.

BIRD NOTES

A young pair of Emus were received from Adelaide Zoo during the month. They have been kept in an aviary in the Temperate Bird House for the winter but will be found accommodation in an outside paddock for the summer. The two youngsters are rather nervous at the moment but are gradually becoming more tame.

Emus are the most widespread and second largest of the flightless birds. They are found in wide areas of Australia except for the more urban areas close to the coast. In Tasmania, King Island and Kangaroo Island, they have been exterminated. The Emu is at home in open grassland and light forest areas but unfortunately does a great deal of damage to fences and crops. Emus stand between five and six feet high, weigh about 100 lbs. and can do a considerable amount of damage — for this reason they are disliked by farmers. In Western Australia a bounty of four shillings a beak was paid from 1945-1960 for the destruction of 285,000 Emus. Fortunately the trend today is to build Emu-proof fences to keep the birds away from Wheat growing areas.

Emus thrive in captivity and have often bred. The male bird incubates the 8-10 large greenish coloured eggs for approximately eight weeks. These birds are prolific egg layers — up to 16 being known; the eggs weigh 20-25 ounces and are often kept as ornaments by people living in country areas of Australia. The young Emus are pale-coloured with dark longitudinal stripes but become a dark greyish-brown colour towards maturity.

The Emus' diet is extremely varied, consisting of fruits, berries, grain, greenfoods and a quantity of insects. At the Zoo a mixture of grain, vegetable and fruit is given.



TWO BANDED MONITOR

Mr. & Mrs. E. Sorby

Last year we mentioned that our Variegated Bittern and Snowy Egret had built a nest in the Temperate Bird House. Recently they resumed their nesting activities close to the exit door of this building. The Egret collects small twigs, flies to the nesting site and passes them to the Bittern who builds them into the nest.

The Sclater's Crested Curassows which reared two young last year have all been liberated in the Temperate Bird House — previously they had been confined to an aviary in this building to give the young more protection. The young Curassows have now grown almost as large as the parents but unfortunately are two cocks. The adult Curassows have already been observed inspecting the platform on which they nested last year, so we hope they will breed again this year.

BLUE-WINGED SIVA

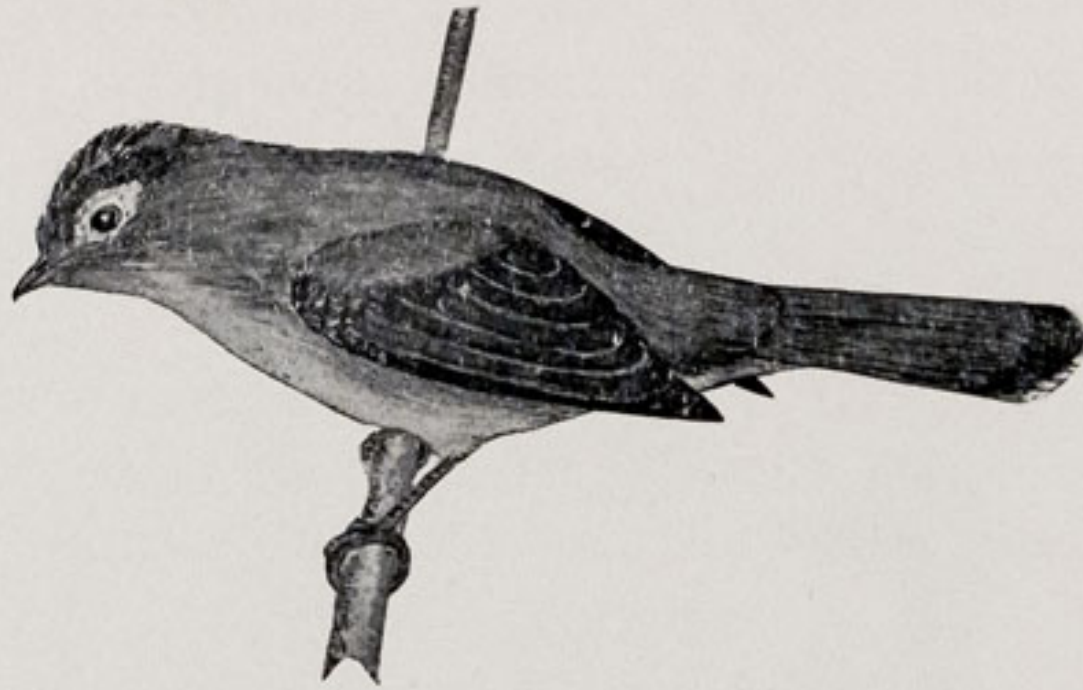
One of the most attractive small birds in the Tropical House is the Blue-winged Siva, a native of the Himalayas. Originally we purchased a pair of these birds and they bred and reared one youngster. Unfortunately two birds died during 1965 leaving one remaining Siva. This Siva is, however, quite happy as he has joined company with our South American Scarlet Tanagers, some of which were bred in the Tropical House during 1966. We are convinced that the Siva considers himself a Scarlet Tanager and the Tanagers seem to have accepted him as an equal.

The Siva and the Tanagers have very similar habits when searching for food amongst the thick vegetation in the Tropical House. They can be observed at close quarters when they all fly to a shrub or plant and search every "nook and cranny" for insects or tasty morsels of food; both species of course obtain the majority



EMUS

K. W. Green, A.R.P.S.



BLUE-WINGED SIVA

M. F. Coupe

of their diet from the food dishes which are placed in various positions throughout the building. The Siva is rather more acrobatic than the Tanagers and is altogether a slimmer bird with a longer tail and requires more insects in its diet. All insects in the Tropical House have to be carefully controlled with non-poisonous insect killing preparations, otherwise they would become completely out of hand, despite the large number of insectivorous birds in the House.

The Blue-winged Siva (*Siva cyanuroptera*) nests in thick evergreen forests at altitudes of 3,000 to 8,000 feet above sea level but moves to a lower level during the winter. This Siva is a most attractively coloured species, being greyish tinged with pale blue on the head and tail, brownish on the back with pale underparts and dark coloured wings.

As their name implies, the cock Scarlet Tanager is a bright scarlet colour except for black tail and wings. The hens and juveniles are a dull red-brown colour.

LABELLING

At this time of the year all our labels have to be replaced if they are showing the least signs of wear and tear. This is quite a task with over 1,000 labels in the various sections of the Zoo.

The labels are printed on a machine designed for the purpose. The majority of our labels consist of a World Map with the Distribution Area of the individual animal painted in red. Below the Map the animal's Common Name, Latin Name and Habitat is listed, i.e., LION PANTHERA LEO AFRICA. All the Maps are identical so any number can be printed off at one time without changing the type but the wording has to be altered for each species. The material used for these labels is white plastic and each label measures 8 x 6 inches.

It was felt that for most animals, this type of label was quite sufficient. However, in the case of a species which is very rare or unusual, for example, Mountain Gorillas or White Rhinos, a more lengthy description of habits is included.

Smaller labels without the Map are used in the Tropical, Reptile and Temperate Bird Houses; it was felt that larger labels would spoil the natural look of these buildings.

In the Tropical and Temperate Bird Houses where large collections of free-flying birds are to be seen, another type of label is used. This is in full use in the Temperate Bird House and labels are being prepared for the Tropical House. There is a separate label for each species of bird, with the Common Name, Latin Name and Distribution Area with a coloured illustration of the bird concerned, which aids in identification. Each label is made of cardboard measuring 8 x 3 inches and is waterproofed with a glazing tissue.

SURPLUS ANIMALS

CATS, JUNGLE	2 male.
CATTLE, ANKOLE	3 male — 2 born 1965, 1 born 1966
COATIMUNDI	4 — born 1966.
GOATS, BAGOT	2 male, 2 female — born 1966.
JACKAL, COMMON	1 male — born 1966.
LECHWE, RED	2 males.
MACAQUE, PIG-TAILED	2 males — born 1965 and 1966.
MONKEY, VERVET	4 males.
PUMA	1 female.
SHEEP, SOAY	6 — born 1966.

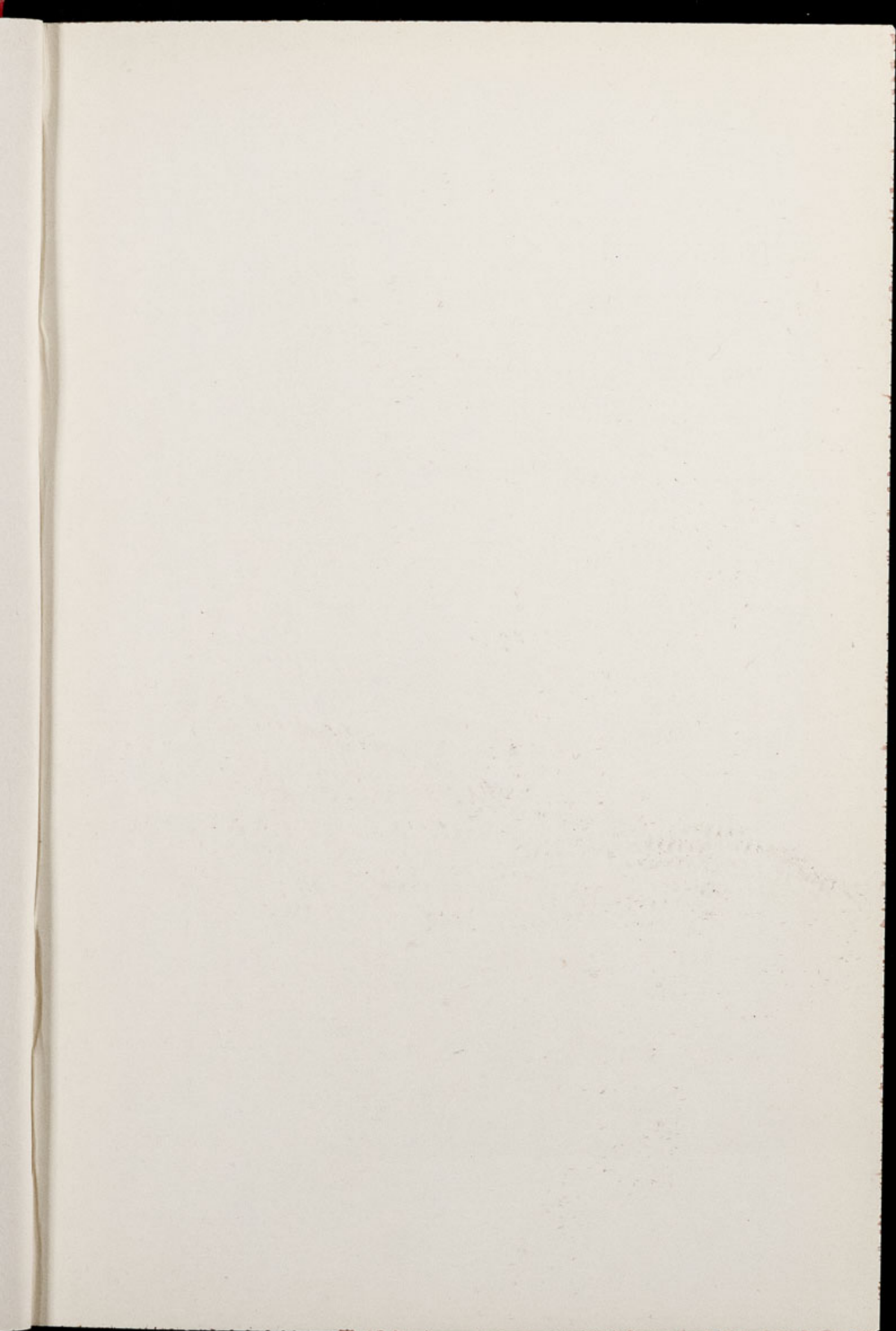
STOP PRESS

New arrivals include:—

Lesser Pandas, Moloney's Guenon, Pig-tailed Monkey, Toco Toucans and Patagonian Conures.

For further details see March "Chester Zoo News".





Printed in England by
G. R. Griffith Ltd.
Castle Printing Works
Chester
