



By Courtesy of K. W. Green, Esq., A.R.P.S.

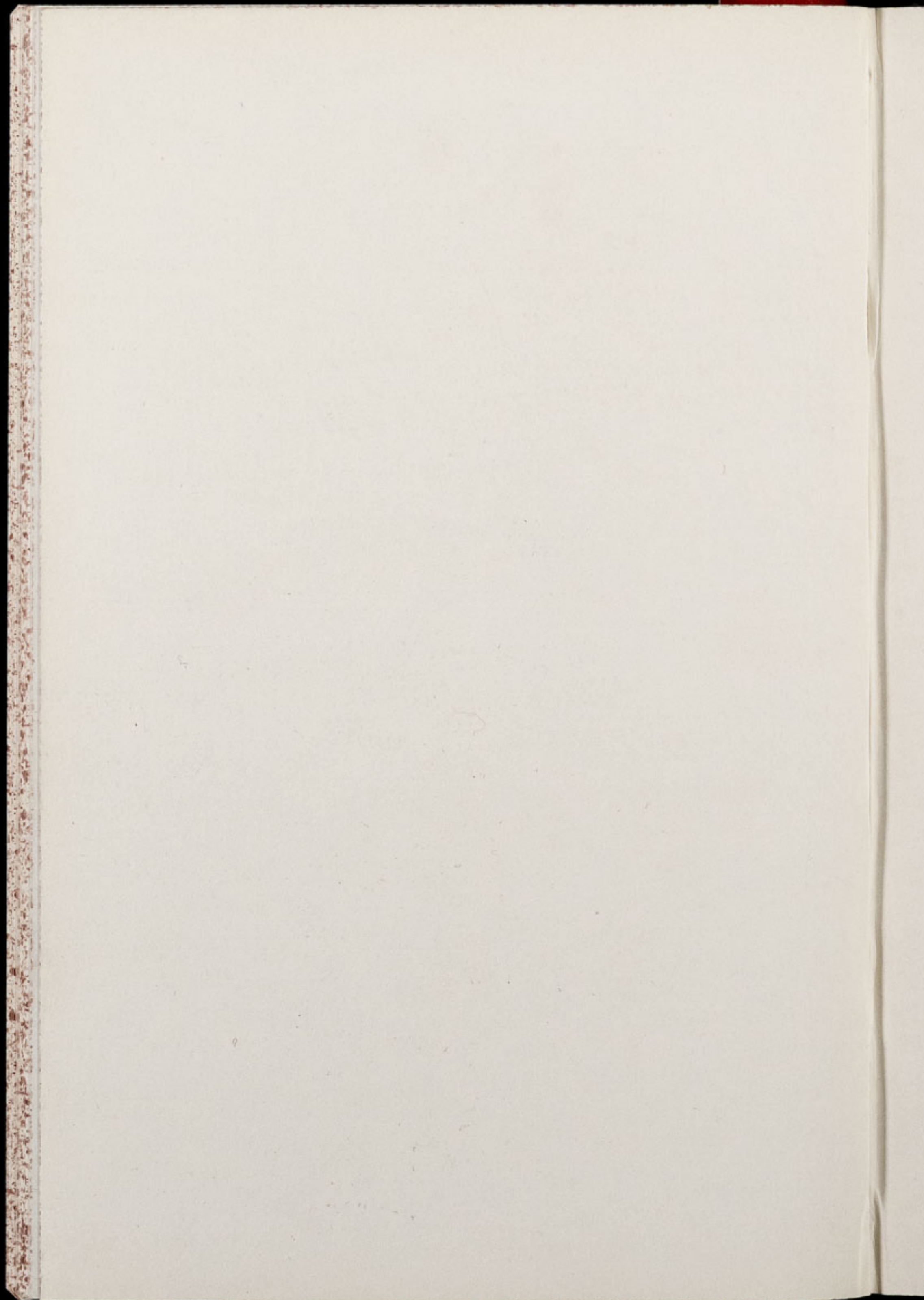
Chester Zoo News

AND GUIDE

**THE NORTH OF ENGLAND ZOOLOGICAL SOCIETY
ZOOLOGICAL GARDENS, UPTON - BY - CHESTER**

April, 1965

Price 1/-



Editorial

The weather during the Easter holiday weekend was atrocious, so we were delighted to find that the attendance figures for the four days were only four and a half thousand less than those for our record Easter of 1962. Indeed Good Friday 1965 attracted six thousand more visitors than the same day in 1962, but Sunday and Monday were much too wet and windy to follow Fridays example. Fortunately so much of Chester Zoo is under cover that visitors can enjoy their visit no matter what the weather.

Once again we are able to record the arrival of many new exhibits on the following pages, including the birth of two Grevy's Zebra foals and the purchase of a pair of rare Amur Leopards.

CONTENTS:

<i>Page two</i>	Zoo Babies, Purchases during April.
<i>Page four</i>	Rescued Puffin.
<i>Page six</i>	Presentations, High Jinks in the Lechwe Paddock.
<i>Page seven</i>	Unusual Patient.
<i>Page eight/nine</i>	Guide to Chester Zoo.
<i>Page ten</i>	Pelicans.
<i>Page twelve</i>	Gardening News.
<i>Page fourteen</i>	Constancy.
<i>Page sixteen</i>	Swan killed by Wolverines.

COVER: Our cover this month features a very sleepy Brown Bear.

ANNUAL SUBSCRIPTION FIFTEEN SHILLINGS POST PAID

TELEPHONE: CHESTER 20106/7/8

ZOO BABIES

BISON PADDOCK: This years first baby Bison — a male calf — was born on the 11th of April and should be joined by other youngsters in the very near future.

REPTILE SECTION: Two baby Common Chameleons were hatched on the 21st of April, one on the morning of Monday, 26th and another on Wednesday, 28th. The interesting thing about these babies is that their mother died in August of last year — shortly after laying the eggs in a patch of earth in her enclosure.

Chameleons are notoriously difficult to keep in captivity and we are hoping against hope that we will succeed in rearing the babies to maturity. They are approximately two inches long at the moment and very active. We are providing them with greenfly, blackfly and fruit flies. Their excellent appetites are evidenced by the fact that they are even eating the houseflies intended for the Green Tree Frogs which share their enclosure.

ZEBRA HOUSE: Both our adult female Grevy's Zebras, *Equus grevyi*, gave birth to healthy male foals during April — the first on the 21st and the second on the 25th. Their Keepers have named the youngsters "Nobby" and "Ozzie".

The successful breeding of Zebras in this country has become even more important since the passing of a Government Order in 1963, which placed a complete ban on the importation of Zebras from Africa. This Order is aimed at preventing the introduction of African Horse Sickness into the United Kingdom and supplements a similar order in 1961 which banned the entry of horses, mules, etc.

SOAY SHEEP ISLAND: The first two lambs of 1965 were born on the 27th and 29th April respectively.

PURCHASES DURING APRIL

3rd April — Four Sea Lions, a young male Fallow Deer and a large collection of snakes and lizards.



J. Walker, Daily Mirror

KEEPER BARBARA WILDRIDGE WITH THREE OF THE HUSKIES BORN IN MARCH

The largest of the new snakes are two eleven foot long Boa Constrictors. New North American Snakes are a Corn Snake — *Elaphe guttata* — so called because it is often found in fields of ripening grain where rodents abound; one Blue Racer Snake — *Coluber constrictor flaviventris*; and two Chicken Snakes — *Elaphe quadrivittata*. These latter acquired their name because they are reputed to frequent the areas around poultry houses, possibly in search of rodents. However, they are also known to be partial to eggs. Other snakes in the consignment were two Speckled King Snakes — *Lampropeltis gentulus holbrooki* — from the eastern United States; one Florida Water Snake — *Natrix sipedon pictiventris* — not to be confused with the poisonous Water Moccasin; and one Southern Banded Water Snake — *Natrix sipedon fasciata* — which is found in the south eastern United States, excluding Florida.

∴ The new Lizards were a pair of Rhino Iguanas and ten Green Lizards. Green Lizards are found in southern Europe and the

near East and grow up to nineteen inches long, of which about two thirds is tail. Their bright green colouration and constant activity make them attractive exhibits.

5th April — April has been quite a month for arrivals at Chester Zoo and newcomers on this date were a pair of fully-grown Giant Anteaters — which Small Mammal House Keeper Frank Coles has named "Porgy" and "Bess". The Monkey House also welcomed new additions — three Brown Woolly Monkeys — *Lagothrix cana peopigi*; seven Golden Spider Monkeys — *Ateles geoffroyi ornatus*; and ten Squirrel Monkeys.

9th April — Members of Zoo Staff turned up at Manchester Airport late on the evening of Friday, 9th April to collect two huge Two-banded Monitor Lizards — *Varanus salvator*. One is over seven foot long and the other almost six — they can grow to nine foot long. The Monitors were flown in from Singapore, after being captured in Sarawak.

These lizards spend a great deal of their time in or near water; ours are provided with a large pond in which they can submerge at will. In the wild they feed on fish, small mammals, birds, insects, other lizards, etc. Despite their size Two-banded Monitors are quite capable of climbing trees.

12th April — two further specimens of Black-pointed Teguxin were added to the Reptile collection. They are natives of South America from Guiana to Uruguay and can grow up to thirty eight inches long. At present the newcomers are just over two feet long — their tails taking up just over half this length.

13th April — Members of Zoo Staff paid another visit to Manchester Airport to meet four important new additions to our collection. These were a pair of particularly rare Amur Leopards and a pair of Black Leopards. Neither species had previously been exhibited at Chester Zoo. In the case of the Amur Leopards it is believed that there are only another four in captivity in the world.

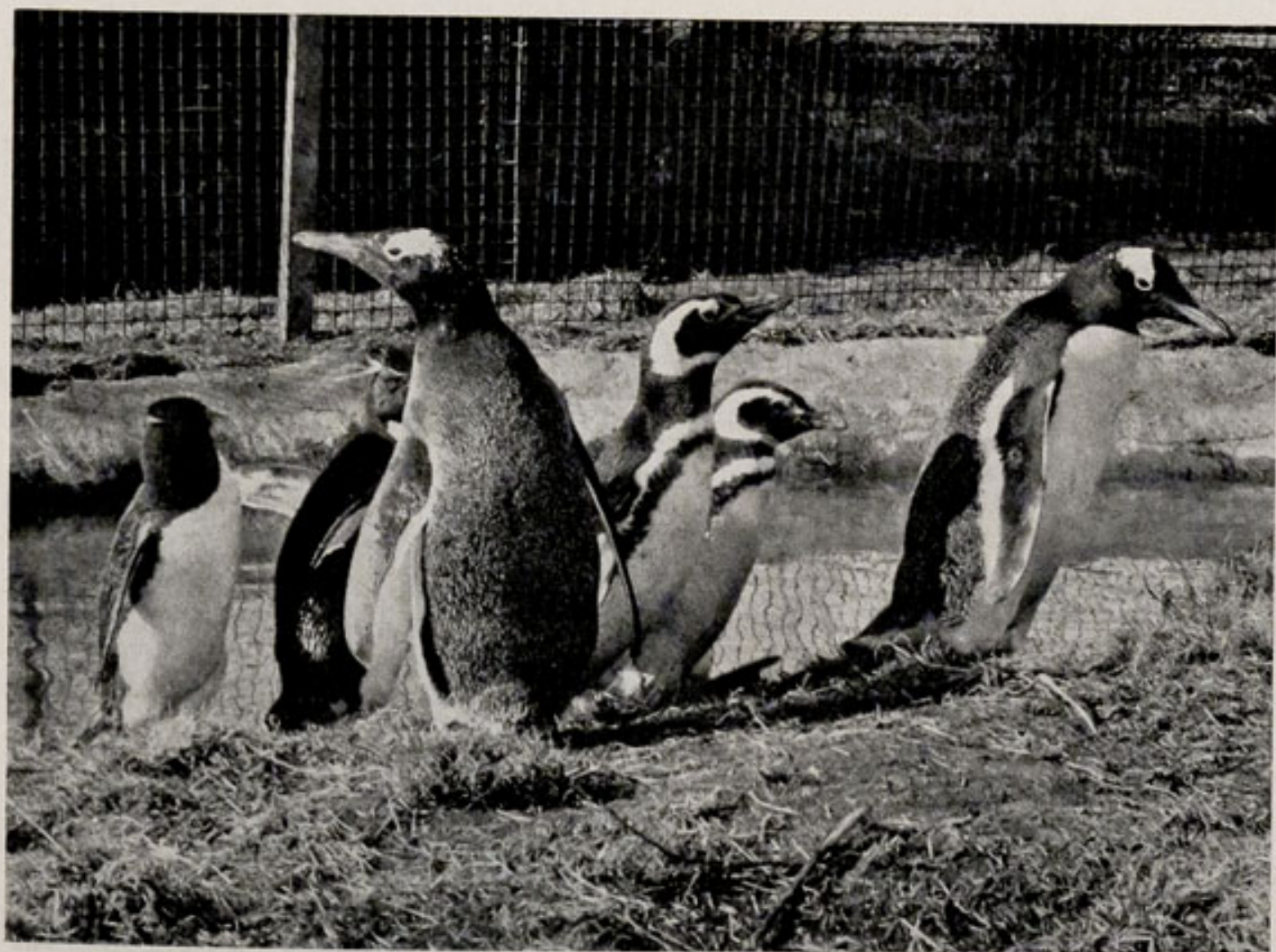
RESCUED PUFFIN

The Puffin was brought to us on Easter Monday, by a young visitor to the Zoo who had rescued it from dogs on the Dee Estuary. Puffins look rather like miniature Penguins and we are caring for the bird with the young Gentoo, Humboldt's and Rockhopper



SEA LION GROUP

K. W. Green, A.R.P.S.



ROCKHOPPER, GENTOO AND HUMBOLDT'S PENGUINS

Mr. & Mrs. E. Sorby

Penguins which arrived here on 16th March. Already the Puffin is taking sprats from his Keeper's fingers. We expect that the bird will eventually fly off, unless it prefers regular feeding to the uncertainties of nature.

PRESENTATIONS



SENEGAL BUSHBABY

1st April — African Grey Parrot.

3rd April — Red-crested Cardinal.

9th April — Hen Cockatiel.

11th April — Senegal Bushbaby.

15th April — two Rufous-necked Weavers.

RECEIVED IN EXCHANGE

18th April — pair of Red-headed Gouldian Finches.

27th April — three American Beavers.

HIGH JINKS IN THE LECHWE PADDOCK

On the 22nd April the two adult males in the Red Lechwe paddock had a "scrap" and the younger took the view that discretion is the better part of valour and escaped from his paddock, alongside the Zoo's canal system. He swam across the canal and spent the remainder of the day amidst the daffodils on one of the islands. A careful watch was kept on the truant and next morning he was caught up and placed in another enclosure — well out of reach of his belligerent relative!



THE DOMINANT RED LECHWE STAG



J. Whitworth

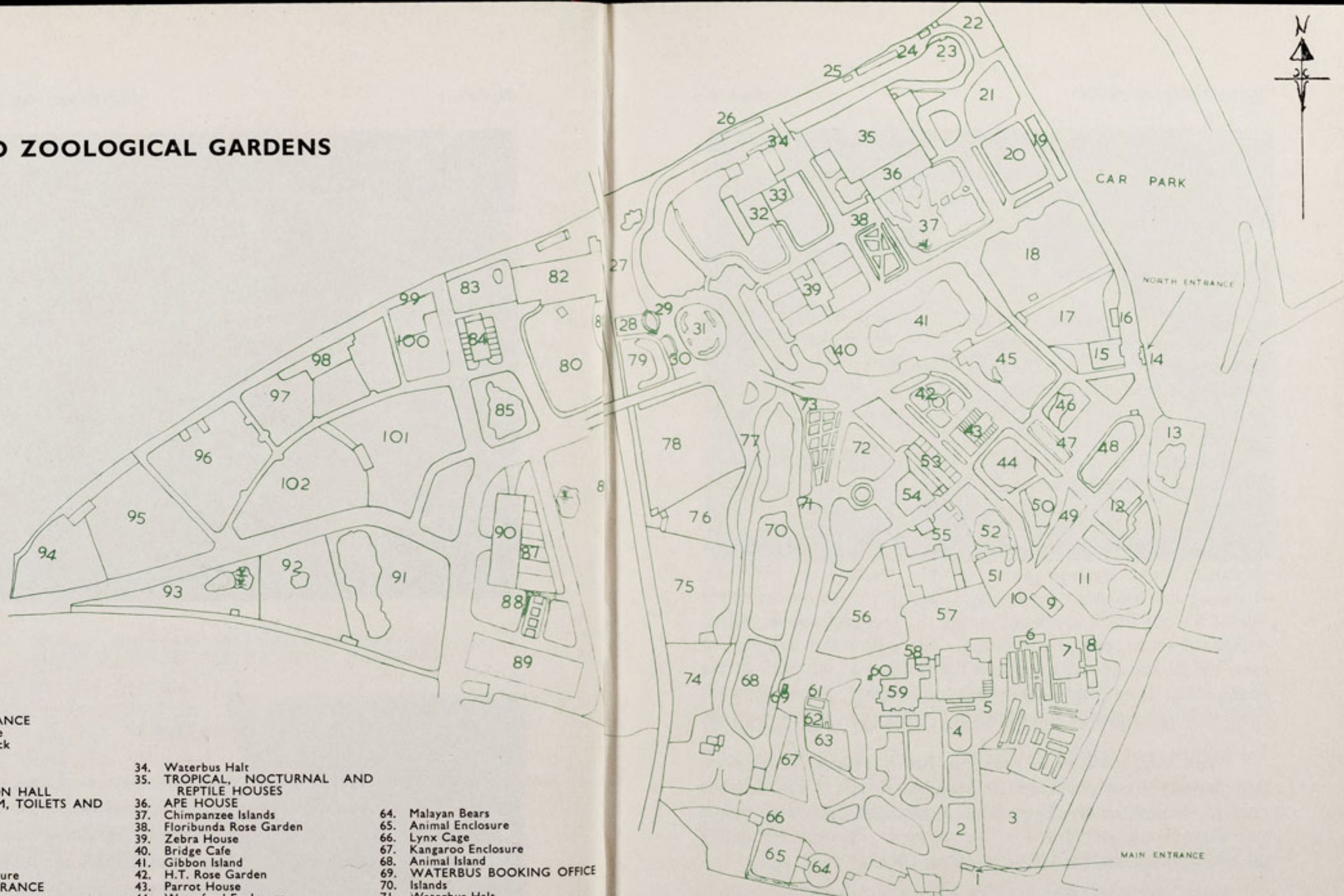
HEAD REPTILE KEEPER ROGER AINSLEY AND "GEORGE"

UNUSUAL PATIENT

Receiving treatment at the present time is one of our six foot long Mississippi Alligators. The Alligator developed a growth on his upper jaw and since this was impeding his eating something had to be done about it. He was taken out of the pool and the growth successfully removed without upsetting him in the slightest.

It would be difficult to say whether the Alligator is friendly or not, but he certainly does not object to his daily medical session. He allows Head Reptile Keeper Roger Ainsley to inspect and treat the almost healed wound, as if it were the most natural thing in the world for an alligator to have his jaw "doctored". The Alligator is now affectionately known as "George".

GUIDE TO ZOOLOGICAL GARDENS



1. MAIN ENTRANCE
2. Bird Enclosure
3. Wapiti Paddock
4. Lesser Pandas
5. Aviaries
6. Milk Bar
7. CORONATION HALL
8. CLOAKROOM, TOILETS AND FIRST AID
9. CAFETERIA
10. ZOO SHOP
11. Picnic Lawn
12. Bears
13. Animal Enclosure
14. NORTH ENTRANCE
15. AQUARIUM
16. PUSH CHAIRS AND WHEEL CHAIRS
17. Animal Enclosure
18. Animal Enclosure
19. RAINBOW CAFE AND SHOP
20. Aviaries and Picnic Lawn
21. †TOILETS
22. Peccaries
23. Waterbus Halt
24. Birds of Prey Aviary
25. Birds of Prey Aviary
26. Owls
27. †Animal Enclosure
28. Wolverines
29. Racoons
30. Coypus
31. Beavers
32. Giraffe House
33. Camel House

34. Waterbus Halt
35. TROPICAL, NOCTURNAL AND REPTILE HOUSES
36. APE HOUSE
37. Chimpanzee Islands
38. Floribunda Rose Garden
39. Zebra House
40. Bridge Cafe
41. Gibbon Island
42. H.T. Rose Garden
43. Parrot House
44. Waterfowl Enclosure
45. Penguins and Pelicans
46. Flamingos
47. Waterfowl Enclosure
48. Sea Lion Pool
49. Rock Garden
50. Polar Bears
51. Tigers
52. Waterfowl Enclosure
53. BIRD HOUSE
54. FOUNTAIN RESTAURANT
55. TOILETS
56. Lions
57. †NEW ZOO SHOP
58. TOILETS
59. OAKFIELD RESTAURANT
60. G.P.O. Telephone Kiosk
61. Animal Enclosure
62. Jackals
63. Cheetahs

64. Malayan Bears
65. Animal Enclosure
66. Lynx Cage
67. Kangaroo Enclosure
68. Animal Island
69. WATERBUS BOOKING OFFICE
70. Islands
71. Waterbus Halt
72. Flower Gardens
73. ROSE GARDENS
74. Deer or Antelope Enclosures
75. Deer or Antelope Enclosures
76. Deer or Antelope Enclosures
77. Waterbus Halt
78. Zebra and Deer Enclosure
79. Kamchatka Bears
80. Elephant Paddock
81. Hippo Paddock
82. PACHYDERM HOUSE
83. Tapir Paddock
84. Small Mammal House
85. Waterfowl Enclosure
86. Ankole Cattle
87. Stork Enclosures
88. Monkey Enclosures
89. †Cat House
90. MONKEY HOUSE

91. Cranes and Waterfowl
92. Waterfowl and Wallabies
93. Cranes and Waterfowl
94. Bison Paddock
95. Deer Paddock
96. Eland Paddock
97. Rhino Paddocks
98. RHINO HOUSE
99. TOILETS
100. MPILA SNACK BAR
101. Antelope Enclosure
102. Antelope Enclosure

†—Under Construction.
Animals may be moved from time to time.

PELICANS

To be seen on the Penguin Island are seven Pelicans of three different species. They have spacious accommodation on their moat-encircled island — separated from members of the public only by a small bank and a flower bed. Because of this the birds can be viewed and photographed without wire or bars getting in the way.

One specimen of the Crested or Dalmation Pelican, *Pelicanus crispus*, is exhibited. This species is widely distributed throughout the Balkans, part of North Africa and eastward through Asia to China. Crested Pelicans can be identified by their silvery coloured plumage and the several curly feathers on top of their heads.

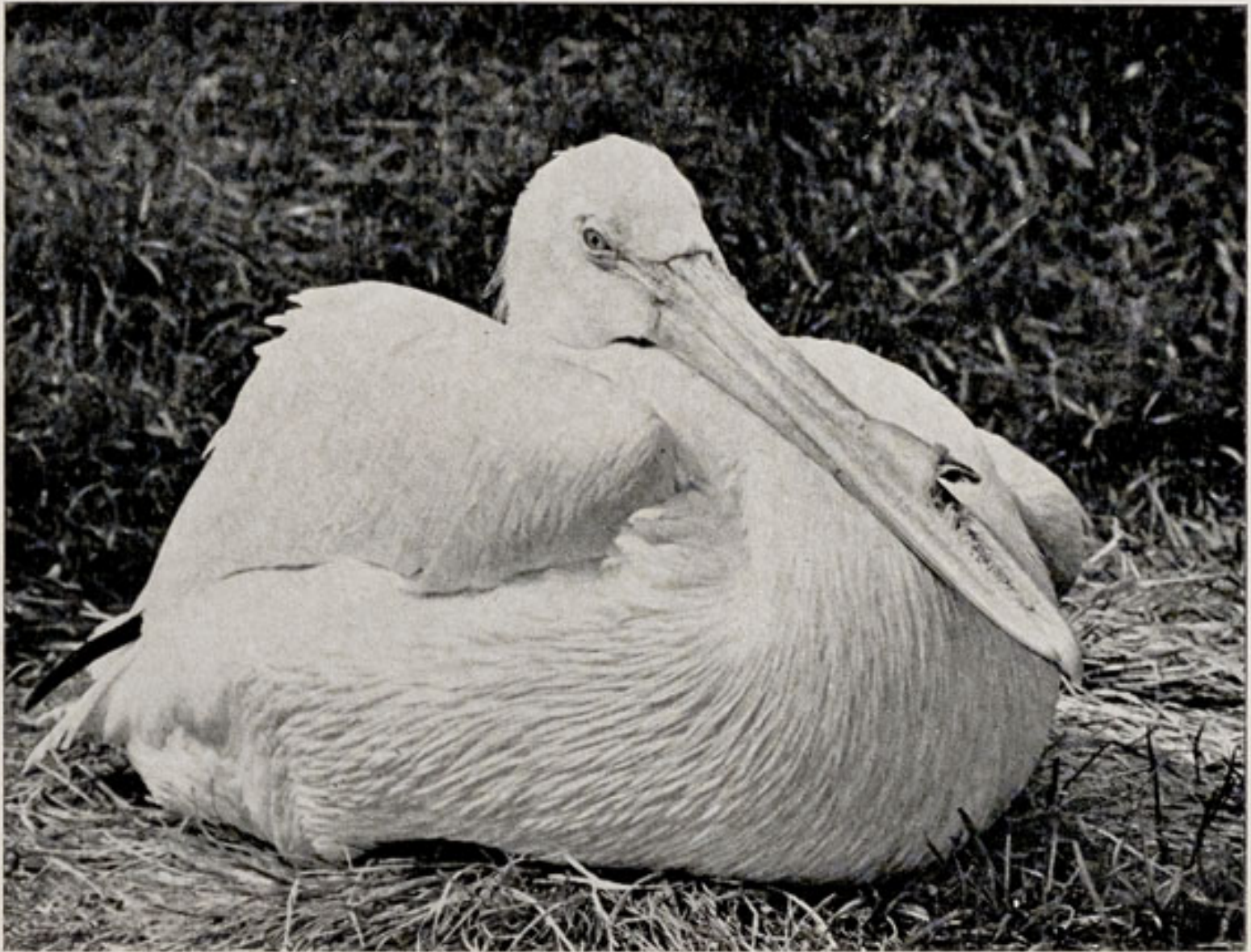
The White Pelican, *Pelicanus onocrotalus*, of which we have five, is found from Rumania and Bulgaria in the north to Africa in the south and northern India in the East.

Very similar to the White Pelicans are the American White variety, *Pelicanus erythrorhynchus*, of which we have one specimen. However, the American species has a horny growth on the upper side of the bill which is present during the breeding season. Other differences to be seen in our bird are the yellow skin around the eyes, the darker coloured legs and the feathers at the back of the head which form more of a tuft. American White Pelicans breed in North America and winter in Florida and Central America.

Apart from the Central American Brown Pelican, which dives into the water from a considerable height in pursuit of fish, Pelicans hunt in shallow water. Their large beaks with distensible pouch and sharp hook are ideal for this purpose. Pelicans are highly gregarious often feeding together in great flocks.

One method of feeding which has been observed is for a group of Pelicans to form a line some distance offshore. Then they begin swimming shorewards, flapping their wing all the while to drive the fish into shallow water where they can be caught more easily.

Although they look rather top heavy with their large beaks, Pelicans can fly extremely well once airborne. They fly with their heads retracted, often in regular formation.



J. Gwyn Jones

AMERICAN WHITE PELICAN

The Pelican family has been divided into six or eight species, depending on taxonomic opinions. Scientific books tell us that the relationship of the different species has not yet been worked out. One cannot rely on the sub-genera that have been proposed, so in some cases this makes identification extremely difficult.

Large nests of sticks are built. The chosen nesting sites vary with the locality in which the Pelicans find themselves rather than with the different species. They are equally happy to build their nests in trees, on the ground, on hillsides or in swampy areas.

White Pelicans lay two or three eggs which are white when laid but soon become discoloured. The eggs take four or five weeks to hatch and the young are completely bare and helpless. Both parents

feed them regurgitated fish. At first the parents manage to trickle a little down the youngsters throats but after five to six days the babies become strong enough to put their heads into the parents pouches and feed on the regurgitated fish in this way.

Young White Pelicans grow rapidly and after about two months are able to fly. Their plumage is a brownish colour at first but gradually becomes whiter with each moult. They reach adulthood when three years old and are then almost completely white in colour.

Pelicans live for a considerable length of time. Although too few have been ringed to provide conclusive evidence, at least thirty years would appear to be a fair estimation of their life span.

GARDENING NEWS

We are finding that spring is very late this year. At the time of writing on the 9th of April, we have had no real growing weather so far and are experiencing frost most nights. The greater part of the new landscape work has been completed, although we still have a new garden to make on the area previously covered by the Old Monkey House.

New shrubberies have been added in various parts of the gardens — the most noticeable being in the area surrounding the new Cat accommodation. Some three hundred shrubs have been planted in all and, with the exception of twenty-four new varieties brought in to increase and vary our collection, they have all come from our own nurseries.

It was decided to plant Floribunda Roses round the new Monkey cages alongside the Monkey House. This is to discourage children crossing the border to the cages, with the consequent risk of bitten fingers. Five hundred rose bushes were needed here and, with the



Mr. & Mrs. E. Sorby

PELICAN GROUP

five hundred planted by the Mpila Snack Bar, it has increased our roses by another one thousand, to ten thousand. We do not feel that we are overdoing our rose plantings, as they do so well with us. What better show can be had than their continuous flowering throughout the summer and autumn months?

The Tropical House continues to give satisfaction with the continued rapid growth of the plants. They are now benefitting from the thorough treatment given to them during the early spring, in the way of top dressing, etc. Bananas and Lemons are fruiting at the present time and we have two very fine specimens of the variegated Pineapple fruiting in our Greenhouses. These will be transferred to the Tropical House when the pines are further developed. At their present stage they require continuous feeding.

The Orchids in the Tropical House have almost finished flowering but during recent weeks, Dendrobiums, Cyrtopodiums and Cattlyas have made a fine display in the staged group near the entrance to the House.

Spring bedding came through the winter well, with few losses and although it is late this year will soon be at its best. The Polyanthus which are the first to flower will be in full bloom in about a week.

The five and a half tons of Daffodils planted over the last four years are now well established and increasing themselves, with the resultant blaze of colour which we are enjoying at the present time. The beds of *Primula denticulata* at the back of the Brown Bear enclosures are also in full flower now.

Pressure of work is very heavy in the glasshouse department at the moment. Everything seems to want doing at once. Still our summer bedding is now well on the way, with most of the potting and pricking out (according to the particular requirements of the various plants) completed.

The building of the new Cat accommodation is nearing completion and large troughs on top of the service passage have been filled with soil and planted with *Vitis coignetiae* and *Polygonum baldschuanicum*. These will climb and wander over the entire wire roof area. Between each enclosure the troughs have been planted with *Vitis brandt*, *Vitis purpurea*, *Vitis henryana* and the Golden Hop, which are all vigorous growers and will soon give the desired result of covering the whole area of wire.



Mr. & Mrs. E. Sorby

DENDROBIUMS IN THE TROPICAL HOUSE

CONSTANCY

Readers may remember a report in the April, 1964 issue of "Zoo News", telling of the friendship between a male Ashy-headed Goose and a female Demoiselle Crane. Since all attempts to separate them failed, we eventually gave up trying and, 12 months later, the friendship still continues.

STOP PRESS:

An exciting consignment, consisting of thirty-four crates of mammals, birds and reptiles, has just arrived from Melbourne, Australia. Full details will be included in the next issue of "Zoo News".



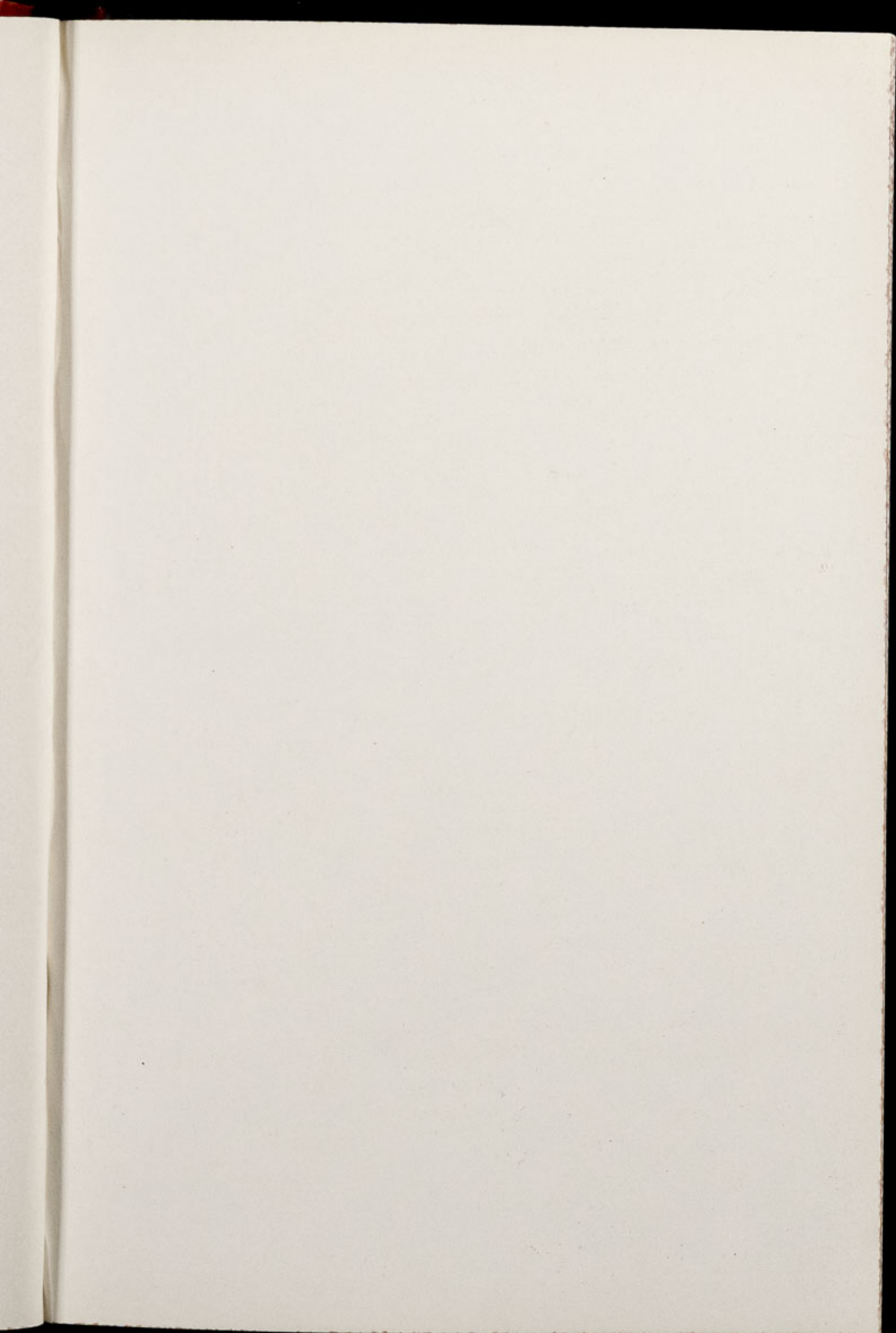
Mr. & Mrs. E. Sorby

WOLVERINE

SWAN KILLED BY WOLVERINES

For the past few years a pair of Mute Swans have nested and raised their youngsters on one of the Chimpanzee islands. The Swans are, of course, free flying. This year the female unwisely landed in the Wolverine enclosure and was immediately attacked and killed by our pair of Wolverines. Fortunately the swan died instantly, but we will miss what we came to think of as "our swans" and their delightful families.





Printed in England by
G. R. Griffith Ltd.
Castle Printing Works
Chester
