



By Courtesy of K. W. Green, A.R.P.S.

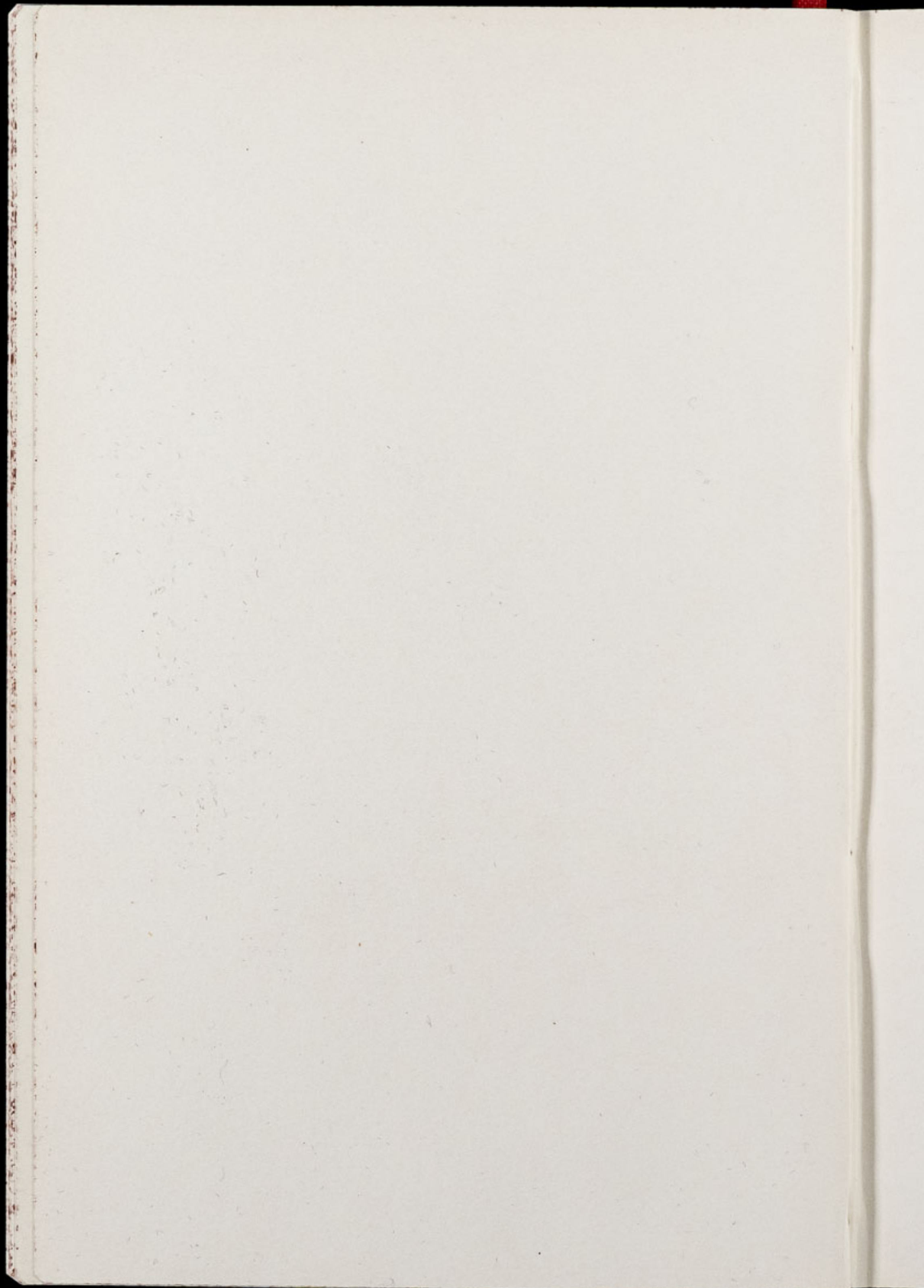
Chester Zoo News

AND GUIDE

THE NORTH OF ENGLAND ZOOLOGICAL SOCIETY
ZOOLOGICAL GARDENS, UPTON - BY - CHESTER

February 1971

Price 5p



The North of England Zoological Society

ZOOLOGICAL GARDENS, UPTON-BY-CHESTER

COUNCIL

MISS G. M. RUSSELL-ALLEN, O.B.E. (CHAIRMAN)
HER GRACE SALLY DUCHESS OF WESTMINSTER
THE RT. HON. LORD TOLLEMACHE, M.C., D.L.
W. P. BLAND
A. C. JOHNSON
H. F. PARKER
J. N. WILSON
J. A. KILPATRICK, M.B., Ch.B., F.R.C.S.E.
A. E. SMITH
F. MOSFORD
PROF. J. O. L. KING, Ph.D., M.V.Sc., B.Sc. (AGRIC.), F.R.C.V.S.
H. D. COOPER, F.I.M., F.I.F.F., A.I.B.
A. K. McGHIE, A.I.B.
G. R. PRYOR, C.Eng., Hon.M.I.Prod.E., F.B.I.M.
E. SORBY, M.A. (OXON)
G. S. MOTTERSHEAD, M.Sc., DIRECTOR-SECRETARY

CONTENTS:

<i>page two</i>	Births. Reptile News. Gardening Notes.
<i>page five</i>	Report for 1970.
<i>page six</i>	List of species bred.
<i>page eight/nine</i>	Zoo Plan.

ILLUSTRATIONS:

<i>page three</i>	Cattlya in the Tropical House.
<i>page seven</i>	Common Leopard.
<i>page eleven</i>	Red-sided Eclectus Parrot chick.
<i>page thirteen</i>	Red-masked Conure chick.
<i>page fifteen</i>	Waterbus in the spring.

COVER: Hamadryas Baboons; see page 2.

ANNUAL SUBSCRIPTION — NINETY NEW PENCE POSTAGE PAID

TELEPHONE :: CHESTER 20106/7/8

BIRTHS

The only birth we have to report this month is that of a Hamadryas Baboon (*Papio hamadryas*). The addition of the baby Baboon, which may be seen with its mother in enclosure No. 88, brings the number of individuals in the Hamadryas group to 7.

REPTILE NEWS

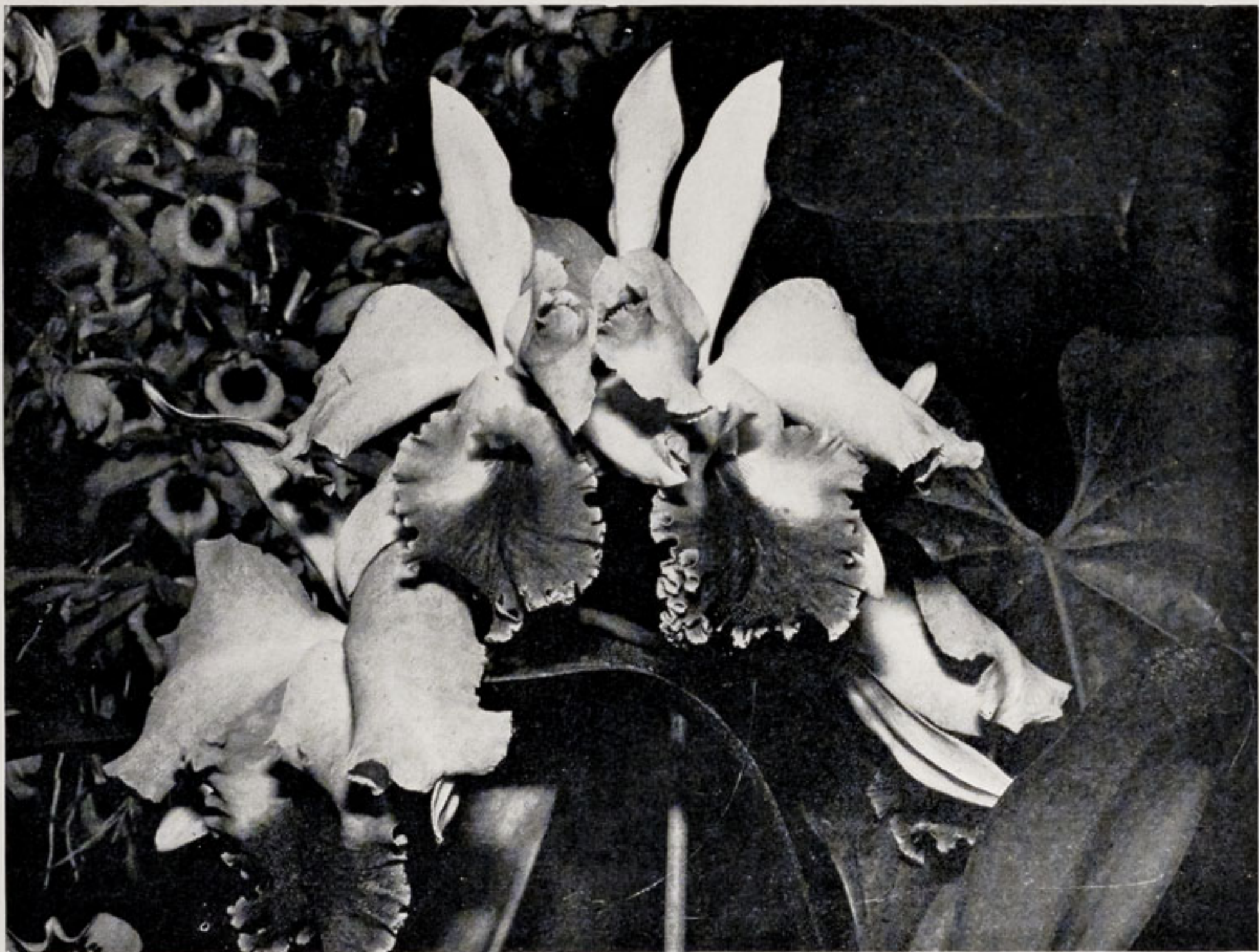
A young Indian Python (*Python molurus*) is a new arrival in the Reptile Section. It is a specimen of the lighter colour phase of this species, which is found in western India. The dark form has brownish-black and dark green markings and is distributed in India, the Malay Peninsula, Sumatra and Java. It is usually longer and more aggressive than the pale variety.

The young Python we have acquired is about 5 feet long and has light grey and reddish-brown patterning. When fully grown it may measure up to 16 feet in length. At the present time the snake is being kept off show in order that the keeper can ensure it is feeding properly. The last specimen of a light Indian Python on exhibition at the Zoo lived in the collection for over 10 years and died about 5 years ago.

Some of the Rainbow Boas (*Epicrates cenchris*) which were born last month have been exchanged for a Gaboon Viper (*Bitis gabonica*).

GARDENING NOTES

Work in the gardens at this time of year is mostly routine — especially this year as, for the first time in many years, we have no large landscape commitments to carry out. Minor landscape work has been completed round the new enclosures beyond the Cat House. This is taking the form of borders which are being planted with flowering shrubs from our own nursery, propagated from cuttings and grown on here at the Zoo.



CATTLYA IN THE TROPICAL HOUSE

J. Whitworth

The Hydrangea border by the Lesser Panda enclosure has been cleared of the old plants. New soil has been introduced and the border replanted with young Hydrangeas which will be interplanted with the Dwarf Foxglove, 'Foxy', and Sweet Williams. These will fill the border until the Hydrangeas become established and fill their allotted space.

Some of the Azaleas in the bed by the Main Entrance have not grown as well as they should. These are being taken out, the old soil removed and replaced with new, and the Azaleas replanted. We intend interplanting these with varieties of Lilies.

We are also replanting the border on the left of the main drive to the Oakfield Restaurant. This border was planted successfully with Veronicas but unfortunately these were killed by the severe frost of the 1962-63 winter; since then it has been planted with various shrubs, etc. It is a difficult border, being very dry and over-shadowed by trees and Veronicas seem to be the most adaptable shrubs for this site, so having grown a varied collection, we are replanting with Veronicas and hope we do not experience another severe winter.

There is always a big demand for branches for feeding purposes in the Zoo. This winter we have planted several plantations, mostly willow, in odd corners of the farm land.

The annual spring clean is now taking place in the animal and Tropical Houses and entails pruning, staking, tying, top dressing the beds and borders with new soil and manure, etc. A great deal of work is involved which is time consuming but it is most important that it is carried out in the correct way so that the various trees, climbers and plants can be shown as well-grown specimens, to give the full effect of flower, etc.

It has always been our policy to introduce new and worthwhile plants, particularly to the Tropical House, as and when we are able to add them to our collection. Last spring one notable addition was *Aristolochia* (*Dutchman's Pipe*), a native of Brazil. In the coming

spring we will plant *Lapageria rosea*, a climber from Chile, known as the Chilean Bellflower. This plant together with varieties of *Bougainvillea* will be planted on the east wall of the Tropical House. From the time of the original planting of the house, this wall has been covered with *Cissus striata*, which has not been too successful; we feel the new plantings will be much more colourful and interesting.

Our Orchids are again flowering well and a group has been on display in the Tropical House since December where it will remain until May. At present *Euphorbia fulgens*, together with other plants, is in a staged group in the Tropical House. This has delighted the Hummingbirds which can be seen continually extracting nectar from the flowers.

Once more we are approaching a very busy time in the greenhouses with seed sowing, propagation of cuttings, etc., taking place to grow the 80,000 plants required for our summer bedding displays. At the time of writing all the spring bedding plants have wintered well and give promise of a good display, with bulbs more forward than usual, due to the exceptionally mild January and February experienced so far.

REPORT FOR 1970

Following our annual stocktake, we thought that readers would be interested to have a complete list of the animals which were bred last year.

At 31st December, 1970, the numbers of specimens (excluding Fish) in the collection were:

Mammals	672 of 148 species
Birds	1,150 of 249 species
Reptiles and Amphibians	192 of 90 species

The following species were bred at the Zoo during 1970. Where possible we have indicated the sexes of the animals reared.

		<i>MAMMALS</i>		
<i>Species</i>	<i>Scientific Name</i>	<i>No. Born</i>	<i>No. Reared</i>	<i>Sex Reared M.F.</i>
Agouti	<i>Dasyprocta aguti</i>	4	4	
Alpaca	<i>Lama pacos</i>	2	1	1 . 0
Ape, Barbary	<i>Macaca sylvana</i>	1	1	0 . 1
Baboon, Hamadryas	<i>Papio hamadryas</i>	1	1	0 . 1
„ Yellow	<i>Papio cynocephalus</i>	1	1	0 . 1
Bear, Kamchatka	<i>Ursus arctos collaris</i>	3	1	
Bison, American	<i>Bos bison</i>	2	2	1 . 1
Blesbok	<i>Damaliscus dorcas</i>	3	2	1 . 1
Cattle, Ankole	<i>Bos taurus</i>	2	1	0 . 1
„ Highland	<i>Bos taurus</i>	3	3	2 . 1
Chimpanzee	<i>Pan troglodytes</i>	4	3	1 . 2
Coati	<i>Nasua nasua</i>	2	2	
Deer, Fallow	<i>Dama dama</i>	5	4	2 . 2
„ Père David's	<i>Elaphurus davidianus</i>	3	2	0 . 2
Dormouse, Edible	<i>Glis glis</i>	3	3	
Eland	<i>Taurotragus oryx</i>	1	—	
Fruit Bat	<i>Pteropus sp.</i>	1	—	
Gazelle, Arabian	<i>Gazella arabica</i>	4	2	1 . 1
Gerbils	Various species	14	14	
Giraffe	<i>Giraffa camelopardalis</i>	1	1	0 . 1
Goat, Bagot	<i>Capra hircus</i>	3	2	0 . 2
Jaguar	<i>Panthera onca</i>	2	2	1 . 1
Leopard, Common	<i>Panthera pardus</i>	5	5	2 . 3
Llama	<i>Lama glama</i>	1	1	0 . 1
Mangabey, Sooty	<i>Cercocebus torquatus</i> <i>atys</i>	2	1	1 . 0
Monkey, De Brazza	<i>Cercopithecus neglectus</i>	2	2	0 . 2
„ Capuchin	<i>Cebus albifrons</i>	1	1	1 . 0
„ Sykes	<i>Cercopithecus</i> <i>albogularis</i>	1	—	
„ Vervet	<i>Cercopithecus</i> <i>pygerythrus</i>	1	1	1 . 0



COMMON LEOPARD (*Panthera pardus*)

K. W. Green, A.R.P.S.

GUIDE TO ZOOLOGICAL GARDENS

ANIMAL FEEDING TIMES

LIONS—3 p.m. except Fridays

BEARS—3-15 p.m.

POLAR BEARS—4-0 p.m.



1. MAIN ENTRANCE
2. Bird Enclosure
3. Wapiti Paddock
4. Lesser Pandas
5. Aviaries
6. Milk Bar
7. CORONATION HALL
8. CLOAKROOM, TOILETS, FIRST AID, MOTHER AND BABY ROOM
9. CAFETERIA
10. CAFETERIA
11. Picnic Lawns
12. Bears
13. Animal Enclosure
- 13a. Kiosk
14. NORTH ENTRANCE
15. AQUARIUM
16. PUSH CHAIRS, WHEEL CHAIRS, FIRST AID, LOST CHILDREN
17. Parrot House
- 17a. Large Flight Aviary
18. APE HOUSE
19. RAINBOW CAFE AND SHOP
20. Aviaries and Picnic Lawn
21. TOILETS
- 21a. Tuatara House
22. Peccaries
23. Waterbus Halt
24. Birds of Prey Aviary
25. Birds of Prey Aviary
26. Owls
27. Jackal and Hyaena Enclosures
28. Animal Enclosure
29. Porcupines and Raccoons
30. Coypus

31. Beavers
32. Giraffe House
33. Camel House
34. Waterbus Halt
35. TROPICAL, NOCTURNAL AND REPTILE HOUSES
36. Chimpanzee House
37. Chimpanzee Islands
38. Floribunda Rose Gardens
39. Zebra House
41. Gibbon Island
42. H.T. Rose Garden
- 43.
44. Waterfowl Enclosure
45. Pelicans
46. Flamingos
47. Waterfowl Enclosure
- 47a. Penguins and Otters
48. Sea Lion Pool
49. Rock Garden
50. Polar Bears
51. Tigers
52. Waterfowl Enclosure
- 52a. Anteater
53. BIRD HOUSE
- 53a. Nursery
54. FOUNTAIN RESTAURANT
55. TOILETS
56. Lions
57. NEW ZOO SHOP
58. TOILETS
59. OAKFIELD RESTAURANT
60. G.P.O. Telephone Kiosk
61. Animal Enclosure
62. Animal Enclosure

63. Cheetahs
64. Malayan Bears
65. Animal Enclosure
66. Aviary
67. Wallaby Enclosure
68. Island
69. WATERBUS BOOKING OFFICE
70. Islands
71. Waterbus Halt
72. Flower Gardens
73. ROSE GARDENS
74. Red Lechwe
75. Red Lechwe
76. Deer or Antelope Enclosures
77. Waterbus Halt
78. Zebra and Deer Enclosure
79. Kamchatka Bears
80. Elephant Paddock
81. Hippo Paddock
82. PACHYDERM HOUSE
83. Tapir Enclosure
84. Small Mammal House
85. Waterfowl Enclosure
86. Antelope and Cattle
87. Storks and Ostriches
88. Monkey Enclosures
- 88a. Lion and Tiger Enclosure
89. Cat House
- 89a. Jaguars
90. MONKEY HOUSE
91. Waterfowl

- 91a. Highland Cattle
92. Waterfowl and Wallabies
- 92a. Llamas and Alpacas
93. Cranes and Waterfowl
- 93a. Zebroids
94. Bison Paddock
95. Deer Paddock
96. Eland and Marmots
97. Rhino Paddocks
98. RHINO HOUSE
99. TOILETS
100. Mpila Snack-Bar
101. Antelope Enclosure
102. Antelope Enclosure

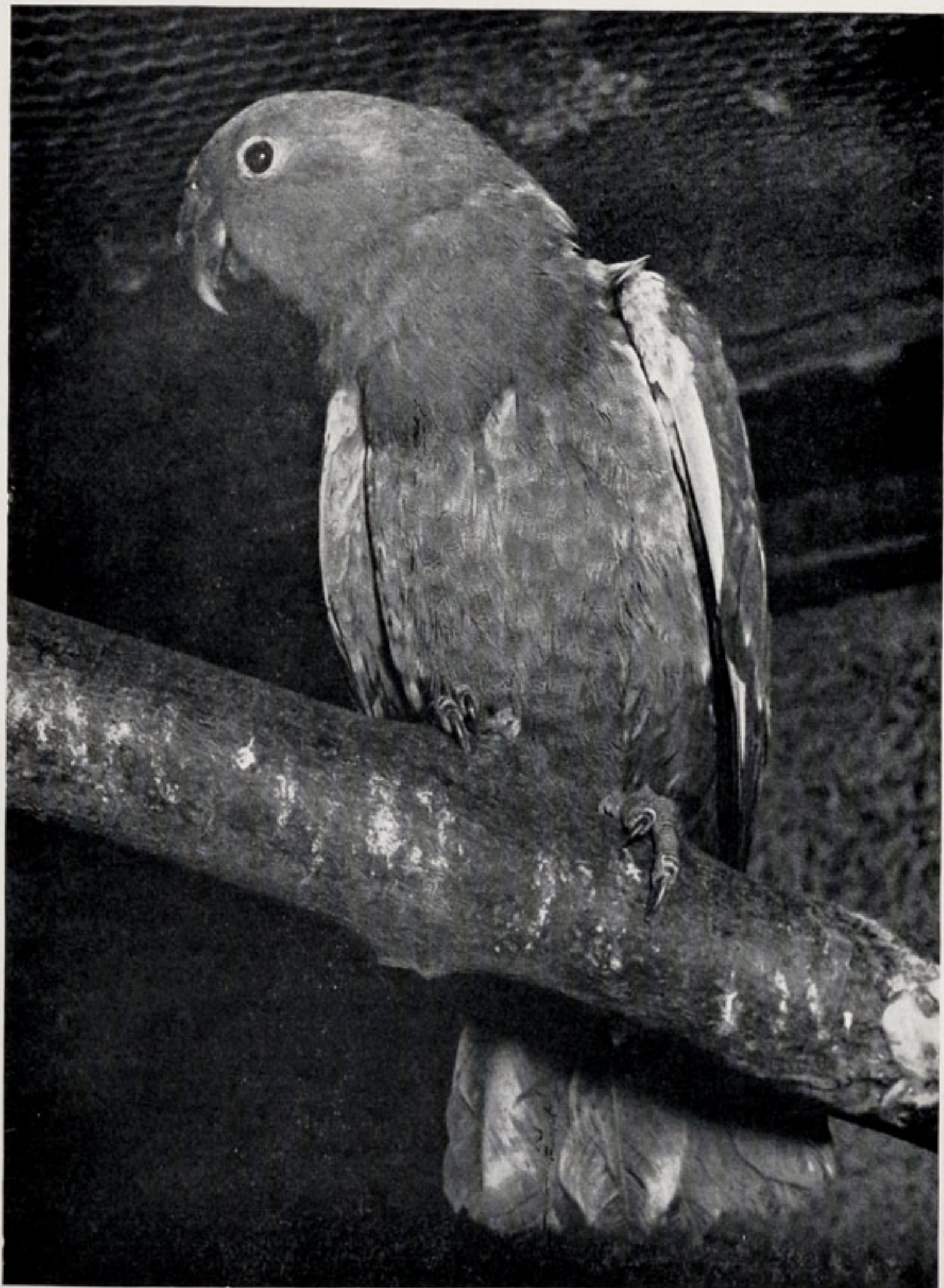
Animals may be moved from time to time

Species	Scientific Name	No. Born	No. Reared	Sex Reared	
				M.	F.
Nilgai	<i>Boselaphus tragocamelus</i>	1	1	1	0
Puma	<i>Felis concolor</i>	4	3	2	1
Sheep, Soay	<i>Ovis aries</i>	5	5	2	3
Squirrel, Ground	<i>Eutamias sibiricus</i>	2	2		
Wallaby, Bennett's or Red-necked	<i>Wallabia rufogrisea</i>	12	8		
Wallaby, Rufous-bellied	<i>Thylogale billardierii</i>	1	1	1	0
Wapiti	<i>Cervus canadensis</i>	4	4	2	2
Wildebeeste	<i>Connochaetes taurinus albojubatus</i>	4	2	1	1
Zebra, Common	<i>Equus burchelli granti</i>	1	1	0	1

The figures shown for the Bird and Reptile breedings refer to the numbers of offspring reared.

BIRDS

Species	Scientific Name	No.
Budgerigar	<i>Melopsittacus undulatus</i>	19
Cockatiel	<i>Nymphicus hollandicus</i>	27
Conure, Red-masked	<i>Aratinga erythrogenys</i>	3
Doves, Barbary, etc.	<i>Streptopelia sp.</i>	8
Dove, Diamond	<i>Geopelia cuneata</i>	1
Duck, Mallard	<i>Anas platyrhynchos</i>	50
„ Muscovy	<i>Cairina moschata</i>	2
Finch, Green	<i>Chloris chloris</i>	1
Goose, Ashy-headed	<i>Chloephaga poliocephala</i>	1
„ Bar-headed	<i>Anser indicus</i>	2
„ Grey-lag	<i>Anser anser</i>	1
„ Lesser Snow	<i>Anser coerulescens</i>	3
Lorikeet, Louisiade	<i>Trichoglossus haematod aberrans</i>	1
Lovebird, Fischer's	<i>Agapornis fischeri</i>	6
Owl, Great Eagle	<i>Bubo bubo</i>	2



K. W. Green, A.R.P.S.

RED-SIDED ECLECTUS PARROT CHICK (*Lorius pectoralis*)

<i>Species</i>	<i>Scientific Name</i>	<i>No.</i>
Parrakeet, Ring-necked	<i>Psittacula krameri manillensis</i>	3
Parrot, Red-sided Eclectus	<i>Lorius pectoralis</i>	1
Parrot, Grand Eclectus	<i>Lorius roratus</i>	1
Penguin, Black-footed	<i>Spheniscus demersus</i>	1
Pheasant, Silver	<i>Lophura nycthemera</i>	4
Weaver, Red Bishop	<i>Euplectes orix</i>	1

REPTILES

Boa, Rainbow	<i>Epicrates cenchris</i>	15
Ratsnake, Texas	<i>Elaphe obsoleta lindheimeri</i>	7
Rattlesnake, Western Diamond-backed	<i>Crotalus atrox</i>	5

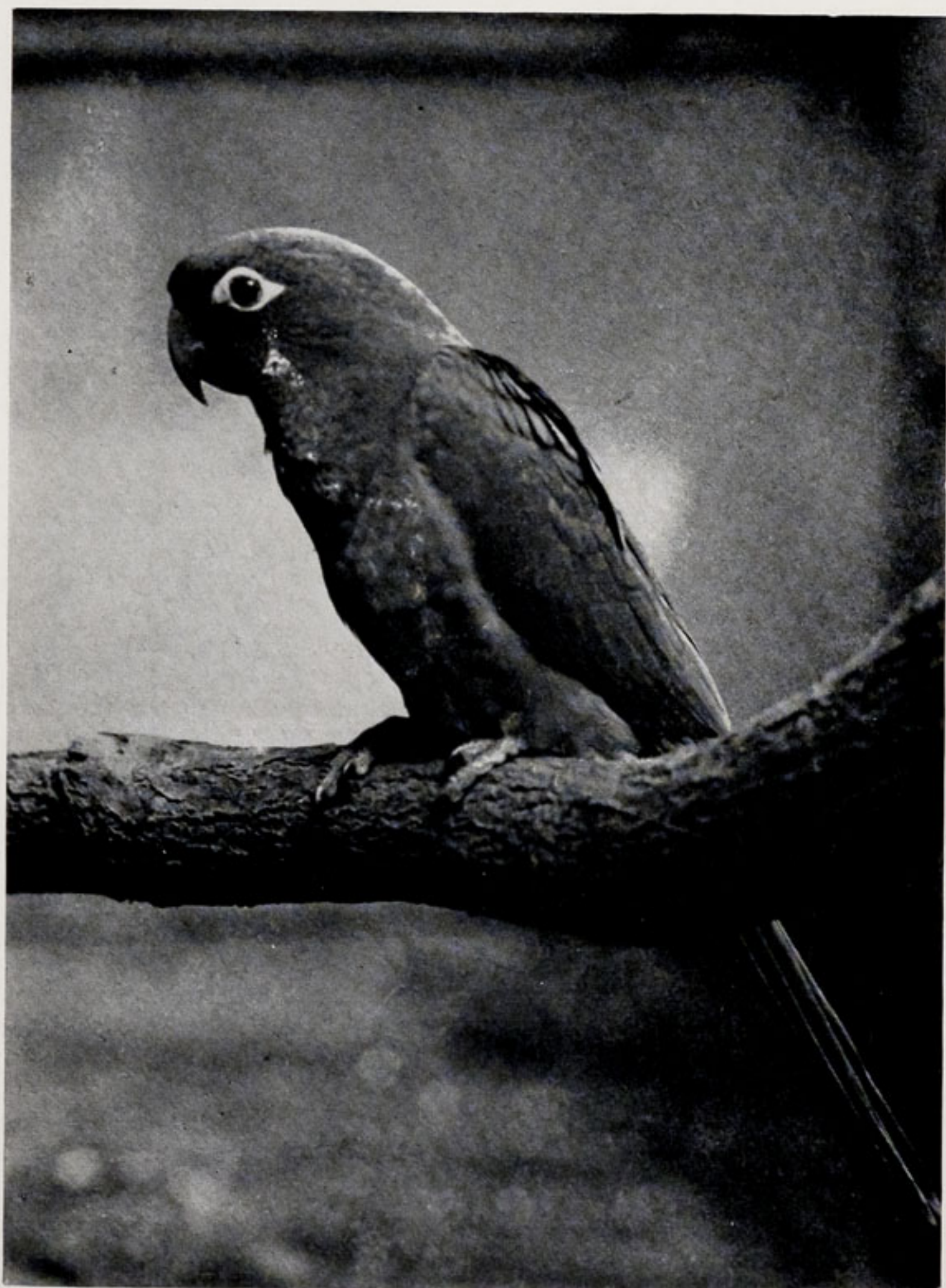
Of the four Chimpanzees which were bred, three are being reared successfully by their mothers. The fourth was born to a female named Pia and died when only a few hours old.

The two American Bison calves were the first sired by the bull we acquired in 1969, while the Nilgai calf was the first born at the Zoo. We hope there will be more young of both species in the future.

We were very successful in rearing the cats and on page 7 there is a photograph of one of last year's Leopard cubs, taken shortly after it had been separated from the mother.

A pleasing number of Monkeys and Baboons have also been reared. The births of the two De Brazza Monkeys were especially welcome as this species had not raised young for several years.

Important breedings in the Bird Section include the two Eclectus Parrots, the Red-masked Conures and Louisiade Lorikeets. The two latter species produced young for a second year and one of the Conure chicks is shown on the right.



K. W. Green, A.R.P.S.

RED-MASKED CONURE CHICK (*Aratinga erythrogenys*)

As most people are aware, breeding reptiles in captivity is generally difficult so we are extremely pleased with our record for last year.

The eggs of the Texas Ratsnakes were removed from the vivarium shortly after being laid and were incubated artificially. The young, which hatched 10 weeks later, were the first Texas Ratsnakes bred in this collection.

Both the Rainbow Boas and Western Diamond-backed Rattlesnakes had been bred here before—in fact our breeding pair of Rainbow Boas has been producing young since 1966 and in last month's issue we reported the birth of yet another litter. The pair of Rattlesnakes reproduced for a second time last year.

A number of Gaboon Vipers (*Bitis gabonica rhinoceros*) were also born in 1970 but have not been included in the breeding list as the females were mated before their arrival at the Zoo.

With regard to building developments, last year saw the completion of a large new Parrot House having sixteen spacious aviaries for hard-billed birds and two for soft-bills. This attractive house has proved a most popular exhibit with its wide variety of Parrots, Cockatoos and Macaws.

The free flight aviary, completed in the spring, has been a similar success since it enables visitors to observe several different species of birds in almost natural surroundings — Herons and Egrets poised motionless by the side of the pools, Ibis probing in the mud with their long curved bills, Golden Pheasants strutting back and forth displaying their magnificent plumage and Kites perched high in the branches.

A new North Entrance, incorporating six payboxes and designed to cope with the increasing volume of visitors to the Zoo, proved most effective. The congestion of earlier seasons was eliminated by the enlargement of the area immediately inside the entrance, which allowed those visitors wishing to purchase Guides or hire



WATERBUS IN THE SPRING

K. W. Green, A.R.P.S.

pushchairs to do so without hindering others moving directly into the grounds. A new pushchair kiosk with facilities for lost children and sale of Guides, was also erected in 1970.

In addition we constructed three paddocks for ungulates and an enclosure for Capybaras and wildfowl. The paddocks were enclosed by means of the ha-ha or ditch surrounded by a low wall and at present they accommodate the Greater Kudu, Brindled Gnu and Llamas. The Capybara enclosure was finished only recently and is not yet fully stocked.

In the autumn work commenced on the reconstruction of the Sea Lion Pool. This is now nearing completion and details of the new design will be published in next month's issue of the 'Zoo News'.

Last year there were approximately 1,026,000 visitors to the Zoo. Of these 229,000 people visited the Aquarium and 168,700 the Tropical House, while the Water Buses gave rides to 46,400 adults and 77,000 children.

The total cost of feeding the animals for a year was £45,000. Included in this amount were bills for 140,000 lbs of meat, 2,372 gallons of milk and 5,736 dozen eggs which give some indication of the quantities of food consumed annually.

MEMBERS' MEETING

Members of the Society may like to note that a Members' Meeting will be held on Saturday, 27th March. Details will be forwarded at a later date.



The following notice is displayed on several boards in the grounds.

Please comply with it at all times.

FEEDING OF ANIMALS AND BIRDS

IT IS AN OFFENCE for any member of the public to offer food of any description to any Animal or Bird in Chester Zoo.

This regulation is made for the sake of the health of the Animals and Birds. Since the NO FEEDING rule was introduced, the number of deaths has dropped appreciably and sickness, due to wrong feeding has been virtually eliminated.

What you may be offering to an animal may only be a sweet or an inoffensive piece of bread, but it can mean a death sentence for the animal. For example, a cough drop, which may relieve your cough, can cause instant death to many Animals and Birds in the Zoo.

You must not lose sight of the fact that you are only one of over a million visitors who visit the Zoo annually. If for instance an elephant had one bun from only one tenth of a day's visitors during the summer, it would eat between three and four thousand. You can guess the result.

We realise what a temptation it is for visitors, particularly children, to feed our Animals and Birds and this is why we invite members of the public to be present at the official feeding times.

This is a polite warning to you, asking you not to feed the animals. If you ignore it, the Keepers are authorised to ask you to leave the Gardens.

If you really love Animals and Birds, you will appreciate the wisdom of the ruling — No Feeding by members of the public.

PLEASE HELP US TO KEEP OUR COLLECTION OF ANIMALS NOT ONLY ALIVE BUT IN FIRST CLASS CONDITION.

