

THE NORTH OF ENGLAND ZOOLOGICAL SOCIETY

Annual Report 1982



THE NORTH OF ENGLAND ZOOLOGICAL SOCIETY
Zoological Gardens, Upton-by-Chester

**NOTICE OF
THE 49th ANNUAL GENERAL MEETING**
To be held on Saturday, 21st May, 1983, at 3.30 p.m.
at the Russell Allen Lecture Hall

AGENDA

1. Reading of the Minutes of the Annual General Meeting held on 22nd May, 1982.
2. Presentation of Accounts and Balance Sheet and Auditors' Report.
3. Discussion of Auditors' Report.
4. Presentation of Council's Report.
5. Discussion of Council's Report.
6. Proposals to amend the Articles of Association.
7. Appointment of Auditors.
8. Appointment of Scrutineers and Ballot for election of members of the Council.
9. Report of Scrutineers on the result of the Ballot.

MEMBERS OF COUNCIL — 1982

PROFESSOR J. O. L. KING, Ph.D., M.V.Sc., B.Sc.(Agric.), F.R.C.V.S., F.I.Biol.
(Chairman)

Dr. J. R. BAKER, Ph.D., B.V.Sc., M.R.C.V.S.

A. J. BLAND Esq., Dipl.Arch., R.I.B.A.

F. S. CARSON Esq., M.C., B.A.(Cantab.)

†Dr. J. E. D. CHARLES-JONES, M.B., B.S., M.R.C.G.P.

*H. D. COOPER Esq., F.I.M., F.S.F., F.I.F.F., Cert.A.I.B.

R. HEATON Esq., B.Ed., Cert.Ed., F.G.S., F.R.G.S.

MRS. B. H. IRVINE,

F. MOSFORD Esq.,

R. P. OWEN Esq., A.R.I.C.S., Rat.Dip.

*G. R. PRYOR Esq., C.Eng., Hon.M.I.Prod.E., F.B.I.M.

(Vice-Chairman)

DINAH, LADY TOLLEMACHE,

L. C. YOUNG Esq., C.B.E., B.Sc.(Econ.)

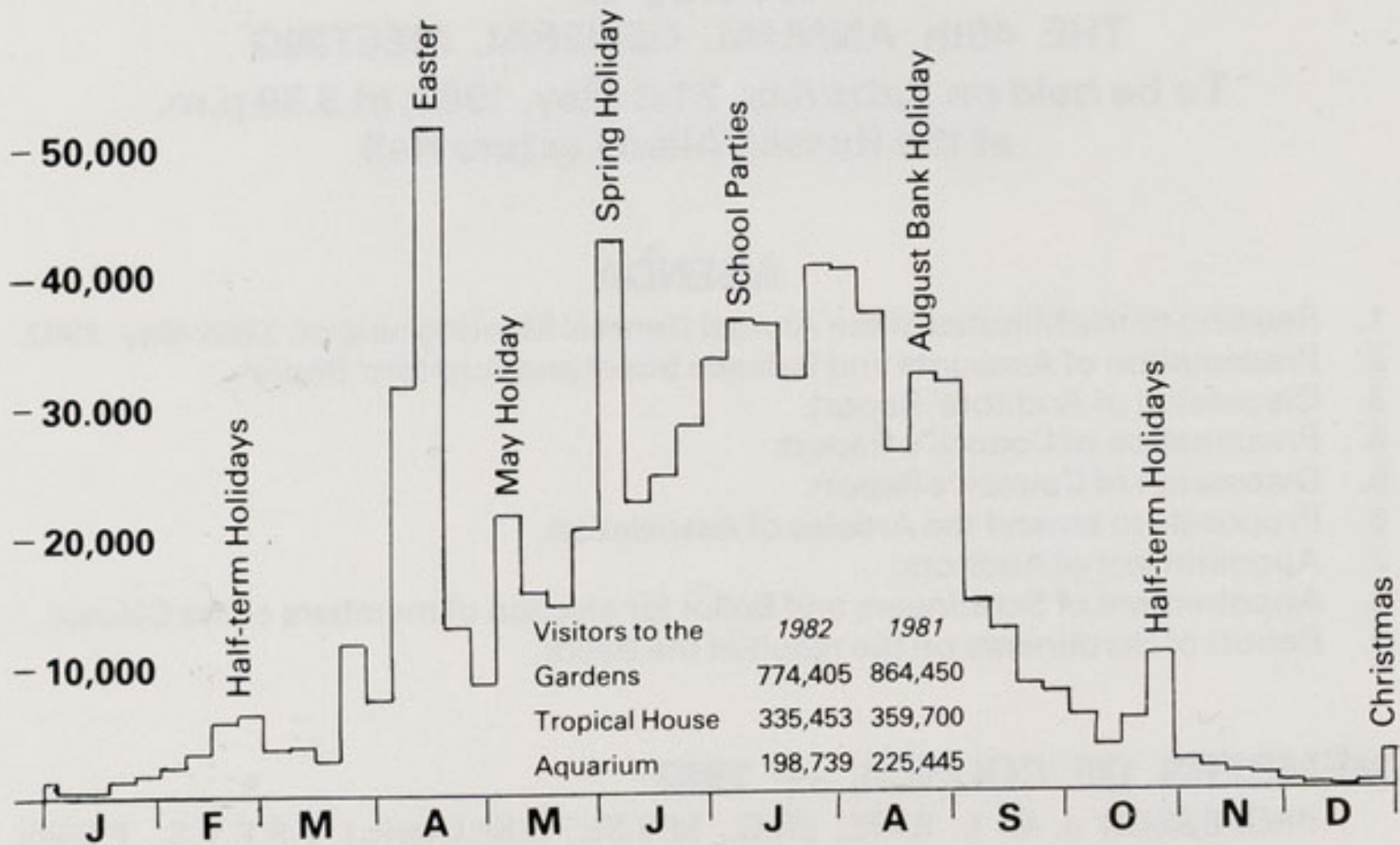
†I. YULE Esq., E.R.D., J.P. *(member until October 1982)*

DIRECTOR

Dr. M. R. BRAMBELL, M.A., Ph.D., Vet.M.B., M.R.C.V.S.

There are six vacancies on the Council. Members retiring from Council who are not offering themselves for re-election are indicated thus †. Retiring Members who are offering themselves for re-election are indicated thus *. If any Patron or fully paid-up Annual Member wishes to be nominated for election to Council, she or he must be nominated in writing by seven Patrons or fully paid-up Annual Members, the nomination to be in the hands of the Secretary not later than 14 days before the Annual General Meeting (i.e. by noon Saturday, 7th May, 1983).

1982 VISITORS/WEEK



Visitors Enjoying a Waterbus Ride
Courtesy of K. W. Green, A.R.P.S.

ANNUAL REPORT 1982

With a drop in the number of visitors of 10%, 1982 was a disappointing year for Chester Zoo. The more so because of the encouraging signs of 1981, when the number of visitors showed a 1% increase. Although similar drops were experienced elsewhere in the British Zoo field, it was particularly disappointing to the staff at Chester Zoo because of the work they had put in towards preparing the Zoo for the visitors.

There is probably no simple solution to the question of why there was such a fall. Competition must be the most important. As the years have gone by since the 1960s when over a million visitors regularly came to the Zoo, there has been a steady increase in commercial and in free leisure attractions in this part of the country. The economy must also be involved. The amount of money left in the North-west's pocket after meeting the essentials of life was less in real terms in 1982 than it was in 1981; a drop of perhaps 15% in discretionary spending.

Chester Zoo is facing the challenge of increasing competition and falling family finances by continuing its campaign of renewal and improvement, and at the same time be streamlining its efficiency so that it operates within its income. Unfortunately, in 1982 the fall in the number of visitors manifested itself too late for costs to be completely trimmed. A loss of £159,000 on the revenue account is recorded in this report.

There is no doubt that the levying of VAT on charitable zoos in the United Kingdom, which alone among the EEC governments levies this tax on its 'non commercial' zoos. In 1982 Chester Zoo collected on behalf of the Government £250,000. It is encouraging that there are signs in its dealings with the Zoological Society of London that the Government is taking a more sympathetic view towards zoos.

Zoos Value to the Community

Over the past years the Zoo has failed to impress the society in which it exists that it has a function of benefit to society as a whole, which is over and above the leisure role. It is assumed that because the Zoo's obvious attraction as a leisure activity is fundable by normal trading, society need not concern itself about the funding of those activities which fall outside the leisure market.

Indeed as long as the Zoo projects itself only as a leisure attraction, it cannot expect its other functions to be taken seriously. Nevertheless, the Zoo does attract about 60,000 children in educational school parties, to whom it makes concessions worth about £40,000. The Zoo is part (still too small a part) of the world conservation movement to which Britain as a nation is committed.

It is hard to identify precisely the costs of our conservation, which are those costs in keeping sensitive species over and above the minimum needed to satisfy the leisure public, but they would be of the order of another £40,000 and possibly more.

These are sums which are difficult to meet under current trading conditions, especially as a huge amount of public money is being put into free public leisure outlets such as the Croxteth Park in Liverpool, Delamere Forest, the Wirral Way, the Sandstone Trail and so forth.

Without seeking direct subsidy, with all the enervating consequences such subsidies bring, these are areas in which the Society and the local authorities can co-operate and we shall be exploring how this can best be achieved.

Enclosures

New and refurbished enclosures included a complete rebuild of the Cheetah and Serval Paddocks, alteration of over half the cages in the Cat House, the building of an aviary for Vasa parrots, finishing the aviaries on the upper gantry in the Tropical House and a new display for Mexican beaded lizards.

Work started on alterations of the enclosures at the Small Mammal House, a nocturnal section is being built to accommodate Rodrigues fruit bats, echidnas, slender lorises and other nocturnal mammals. Enclosures are also being built for marmosets and tamarins in the diurnal part of the Small Mammal House.

Mammals

There were over sixty mammals born into the collection. Among the cats, there were births of leopards, jungle cats, margays, Geoffroy's cats, caracal lynxes and wildcats. There were also several Père David's deer, guanaco, red lechwe and ring-tail lemurs born, and two Brazilian tapirs..

The most significant deaths were of the male and female giraffes and the male pampas cat, which was one of three animals, all males, in this country.

On 5th May, Mrs. Ginny Thornburgh, wife of the Governor of the State of Pennsylvania, presented Chester Zoo with two beavers and a bronze plaque at a ceremony at Jordans, Buckinghamshire, to celebrate the tricentenary of the founding of Pennsylvania by William Penn.

Chester gave its name to the first capital of Pennsylvania, which was to pay an annual rent to the Crown of two beaver skins, and it was these facts which gave rise to this charming gift to the Zoo.



Rodrigues Fruit Bats
Courtesy of Phillip Coffey



Caracal Lynx Kittens
Courtesy of K. W. Green, A.R.P.S.



Brazilian Tapir & Baby
Courtesy of K. W. Green, A.R.P.S.



Baby Guanaco
Courtesy of K. W. Green, A.R.P.S.

Birds

The penguins began to breed in the first year of the new enclosure. Three chicks were reared, two blackfoot's and one Humboldt's. The pool was a very popular exhibit and continues to give a wonderful insight into how the penguins 'fly' under water. Particularly rewarding to young visitors is the way some of the penguins interact with them through the glass side of the pool.

In the Tropical House the free-flying crested oropendola's built a hanging nest high in a palm tree and successfully reared a chick.

Other impressive breeding successes among the birds included a horned owl and eight yellow-faced parrotlets.

To house four Vasa parrots, Madagascan birds which are inexorably losing their wild habitat, a new aviary was built by the Manpower Services Commission team who have been working at the Zoo. They also completed the fox-proofing of the waterfowl paddock and the flamingo pool.

In a great many species of birds it is impossible to tell the sexes apart. For the Zoo man this presents a serious problem in managing breeding stocks. Hitherto, trial and success has been the only method for positively knowing that two birds form a true pair. With the help of the Zoological Society of London, it has been possible to do a survey of such species using a fibre-



Humboldt's Penguins
Courtesy of K. W. Green, A.R.P.S.

optic endoscope to view the internal reproductive organs of the birds. This technique also allowed an estimate of the age of some of the birds to be made. For example, our flamingo flock contains many birds which are now sexually inactive due to age. Other groups which have now been sexed include: rheas, red-fronted macaws and Patagonian conures.

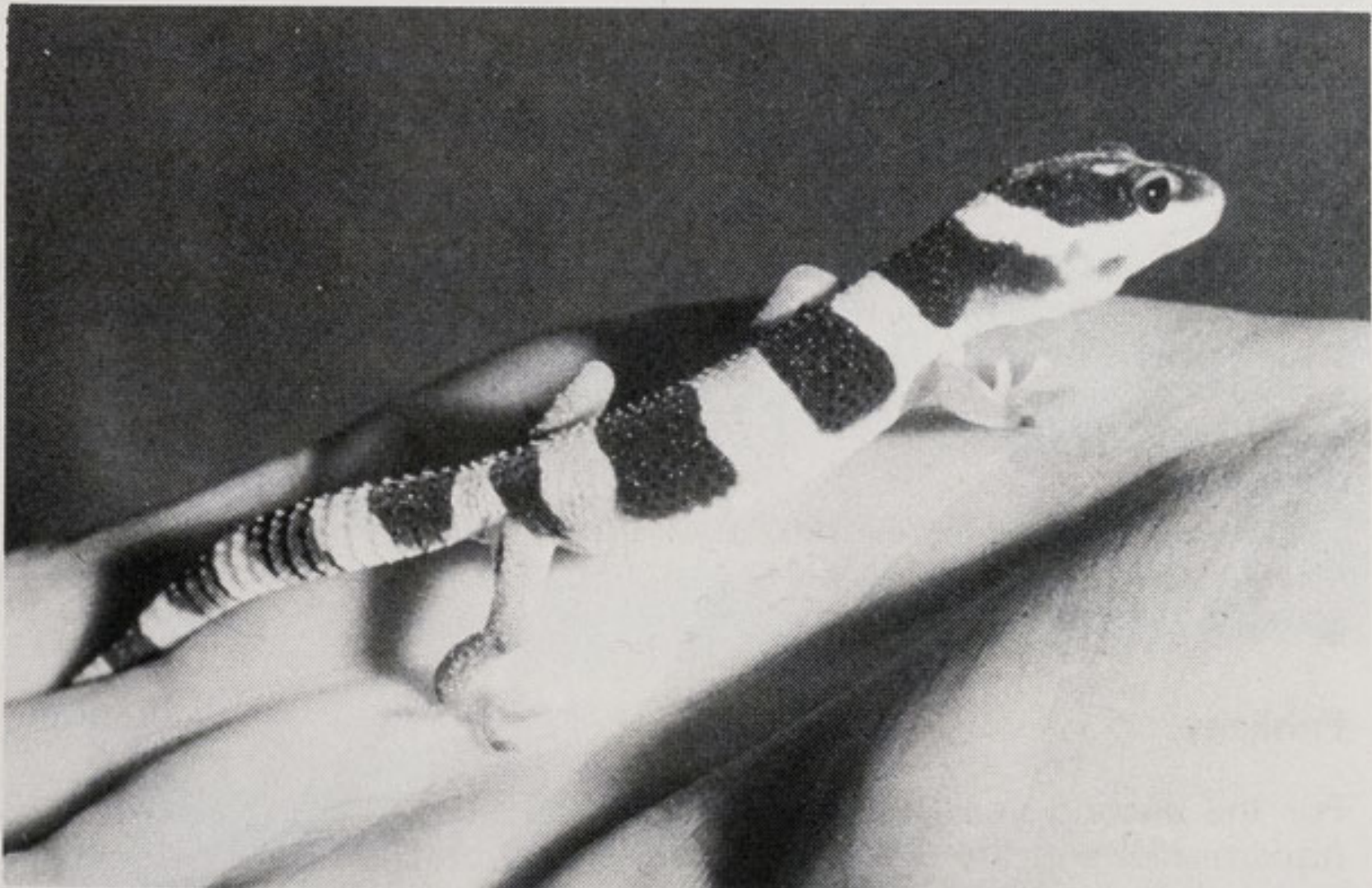
Disease problems were met in the rheas, in which this year's young were lost from an as yet unidentified condition. The tinamous, which are ground-living birds and which suffered badly from the gape-worm last year, did not become re-infected this year because of reurfing of the paddock. Avial tuberculosis and aspergillosis caused problems in ostriches and waterfowl.

Reptiles

Three prehensile-tail skinks were born this year including twins. The colony is important, with Chester and Philadelphia having the most important breeding groups. With only eleven animals it is essential that the size of the colony is built up and that inbreeding is prevented by exchanging stock with Philadelphia, with whom we are developing a joint management programme.

The tuatara did not lay eggs for the second year running though the female did make nest scrapes.

Other successful breedings were tokay gecko, leopard gecko and New Guinea blue-tongued skink and bamboo pit viper.



Young Leopard Gecko
Courtesy of K. W. Green, A.R.P.S.

Aquarium

Five freshwater sting rays from the River Amazon were bred. These fish probably have not been bred in this country before. We did experience difficulties with some batches of fish which failed to thrive although the conditions were apparently identical with those of similar fish experiencing no problems. No explanation was found.

Gardens

The severe weather at the beginning of the year damaged many shrubs including *Hebe*, *Griselinia*, *Ceanothus* & roses. In some cases the damage was such that the plants died, often taking several months to succumb.

New gardens were laid out round the Gazelle Restaurant and the existing pond, which was near stagnant and heavily overgrown round its banks, was cleaned out and provided with a fresh supply (the rainwater drainage from the roof of the Gazelle building). It is now a very attractive feature on which ornamental birds will be kept once the perimeter fence of the Zoo is complete and the pond made safe from foxes.

Those rose plants which did not succumb to the severe winter bloomed for much longer than normal, and several other shrubs seemed to have benefitted from the cold spell. Among the herbaceous plants the *Polyanthus* beds were in magnificent bloom in the Spring.

Chester Zoo takes part in the Britain in Bloom competition and contributed towards Chester City winning the North-west section of this prize.

Zoo Maps & Guides

During the year ten fixed maps were installed at strategic points around the Zoo. Each of these maps were sponsored for £250 by one of the companies which supply the Zoo. The sale of the 5p maps was withdrawn as being no longer necessary once we have provided the public with the means of finding their way about.

The Zoo Guide was rewritten and redesigned by Miss Bella Neate, our Education Officer, and Mr. Kerry Maddrell of Chester County Council. The sales of the guide increased by over five times.

Publicity

For the second year running television advertising was used with 132 transmissions in the Granada region. 65,000 brochures were distributed and mobile display boards were used to advertise the Zoo at various events including the meeting of the British Association at Liverpool.

Labelling

Work started on relabelling the animal exhibits in the Zoo. Thirty species were relabelled by the end of the year using the new system of encapsulated colour copies of original artwork allowing, for the first time, high-quality labels to be cheaply reproduced. We are very grateful to Mr. Les Grandy for the high quality of the artwork of these labels and to the Granada Foundation for their most generous grants of £1,000 in each of 1982 and 1983.

Mercury Hotel Wildlife Weekends

As an experiment four weekends were advertised by the Ladbroke Mercury Hotel, which featured two talks by Zoo staff and a day's visit to the Zoo. The weekends were not as well attended as we had hoped but there was considerable appreciation expressed by those who did come. With more aggressive marketing of perhaps one or two such weekends only each year, it might be possible to attract a couple of hundred visitors to each, making the exercise worthwhile by the time and effort required of the Hotel and the Zoo's staff.



Oakfield House
Courtesy of K. W. Green, A.R.P.S.

Chester Marketing Bureau

A steering group of representatives of Chester City Council and of the private section of businesses in Chester have been preparing for the establishment of a marketing bureau, to bring tourists and day-trippers to Chester. The Director and Mr. Coupe, the Public Relations Officer, have been representing the Zoo on the steering group.

English Tourist Board

As reported in the 1981 Annual Report, the working group on English Zoos set up by the English Tourist Board has continued its work through the year and expects to report in 1983. The Director is a member of the group.

Chester Summer Music Festival

In July, a special concert for children was held in the Zoo. Mr. Johnny Morris and Mr. Douglas Coombes performed and the concert was attended by over 500 children. The Zoo hopes to be able to welcome the Chester Summer Music Festival again in 1983.

Conferences

During the year, with the help of two British Council travel grants, the Zoo was able to be represented at the meeting of the International Zoo Educators in Phoenix, Arizona, by the Education Officer, Miss Bella Neate, and at the meeting in Philadelphia to co-ordinate management of the Lion-tailed Macaque or Wanderoo, by Mr. Nick Ellerton, Assistant Curator of Mammals.

Mr. Keith Brown was able to spend several days working with the reptile collection at Fresno, California.

The Director attended the meeting of the International Union of Directors of Zoological Gardens & Aquaria, which was held in Rotterdam. Several meetings to co-ordinate management between zoos were held in the year, including a meeting of zoo curators held at Chester Zoo.



Lion-tailed Macaque
Courtesy of K. W. Green, A.R.P.S.

Membership

Several Members Meetings were held during the year and, following the decision to charge 50p for meetings, it has been possible to increase the number of meetings for Members and Junior Members. It was also decided during the year to make the *Chester Zoo News* available free to all Members of the Society.

North-west Zoologists Dinner

In March, a dinner was held for professional zoologists in the North-west. It was very well attended and provided a meeting place for the staffs of the Universities, Polytechnics, Colleges and other organisations employing zoologists professionally. It will take time to ensure that all such zoologists are made aware of the dinner which we hope to hold each year as part of our programme of drawing the Zoo closer to zoology teaching in the area.

Computer

An ADDS Multivision 3 computer was purchased during the year to handle the data of the Accounts and Wages Offices.

Legacy and Donations

The Society received several donations amounting to £3,861 and a bequest of £50 from the late Mr. Barry Roberts, who was a regular attender of Members Meetings in spite of persistent poor health and the loss of both legs.

Staff

The average weekly number of employees in 1982 was 178 (1981—189) and their aggregate gross remuneration amounted to £794,230 (1981—£743,247).

Several members of staff retired during the year: Mr. Charles Collins, Maintenance Foreman, after 49 years; Miss Louise Howard, Society Secretary, after 24 years; Mrs. M. Rimmer, Gate Cashier, after 23 years and Mr. Frank Coles, Keeper, after 20 years. Others who retired were Mrs. K. Roberts, Mr. E. Hughes, Miss C. M. Waddington, Mrs. D. M. O'Donnell, Mr. H.

H. Edwards, Mrs. E. Swift and Mr. A. MacRobert. We wish them all a very happy retirement and are grateful for the many years of service they have given to the Society.

The Council is very grateful to the permanent staff for the work and enthusiasm they put into the Zoo during 1982. They are particularly grateful for the way the staff overcame the difficult winter conditions at the start of the year. Also, the temporary staff taken on to help during the busy summer months contributed in no small way to the running of the Zoo, and the Council wishes to record its thanks to them too.

**THE MEMBERSHIP OF
THE NORTH OF ENGLAND ZOOLOGICAL SOCIETY
AS AT 31st DECEMBER, 1982**

Patrons	178
Honorary Members	9
Annual Members	399
Members with over 25 years Membership) who are over pensionable age	11
	<hr/>
	597
	<hr/>
Junior Members	50

VETERINARY AND SCIENTIFIC ACTIVITY

Two hundred and thirty-six clinical cases (10.1% of the collection) and 298 autopsies (12.8%) were dealt with during 1982. The total number of veterinary attendances was 785 and immobilisation and/or anaesthesia was carried out in 74 occasions. The clinical cases were made up of 152 mammals, 59 birds and 25 reptiles. The autopsies involved 92 mammals, 153 birds and 53 reptiles.

The full Veterinary & Scientific Report will be produced as a separate document and will be available on request.

Inventory of Animals

The 'seven column' inventory introduced last year is listed on page 22. A more detailed version is included in the Veterinary & Scientific Report.

BALANCE SHEET AS AT 31st DECEMBER, 1982

	1982		1981	
	£	£	£	£
FIXED ASSETS				
Freehold Property				
Balance as per Schedule annexed	363315		350419	
Special Buildings, Enclosures and Equipment				
Balance as per Schedule annexed	960607		939945	
Stock of Animals				
Balance as per Schedule annexed	157444		156417	
TOTAL FIXED ASSETS	1481366		1446781	
CURRENT ASSETS				
Stocks of Feeding Stuffs, Goods for Resale and Fuel at cost	68772		65073	
Stock of Farm Livestock, Produce and Seeds at cost	—		13283	
Debtors and Prepayments	62161		21036	
Balance at Bank: Penguin Appeal Fund	—		18058	
Cash in Hand	13843		5555	
TOTAL CURRENT ASSETS	144776		123005	
<i>Less:</i>				
CURRENT LIABILITIES				
Bank Overdraft	(894468)		(682074)	
Sundry Creditors	(99822)		(72260)	
	(849514)		(631329)	
NET ASSETS	£631852		£815452	
Financed by:				
PENGUIN APPEAL FUND (see Schedule annexed) .	—		23902	
CONSERVATION FUND (see Schedule annexed) . . .	—		658	
CAPITAL RESERVE ACCOUNT as at 1st January, 1982	59373		59373	
INCOME AND EXPENDITURE ACCOUNT				
Accumulated Surplus	572479		731519	
TOTAL CAPITAL AND RESERVES	£631852		£815452	

Notes:

1. The Company is limited by guarantee and has no Share Capital. Members of the Company have guaranteed the liabilities of the Company to the extent of £1 each.
2. The Company is registered with the Charity Commission No. 306077 and no taxation liability (other than VAT) arises on income.
3. There are no known capital commitments at 31st December, 1982, other than as shown in the accounts.

J. O. L. King, Chairman; M. R. Brambell, Director

Report of the Auditors to the Members of the North of England Zoological Society

In our opinion, the annexed Balance Sheet, Income and Expenditure Account and related notes and schedules give, under the historical cost convention, a true and fair view of the state of the Society's affairs at the 31st December, 1982, and of the deficit and source and application of funds for the year ended on that date and comply with the Companies Acts, 1948 to 1981 in so far as the provisions of those Acts apply to these financial statements.

31 Wellington Road
Nantwich

AFFORD, BOND AND CO.
Chartered Accountants
12th March, 1983

**SCHEDULE ANNEXED TO BALANCE SHEET
AT 31st DECEMBER, 1982**

	£	£
FREEHOLD PROPERTY		
Balance at beginning of year at cost		350419
Add Improvements at beginning of year at cost		17775
		<hr/>
Less Sales during year	32483	368194
Profit on Sale	26704	
		<hr/>
TOTAL AS SHOWN IN BALANCE SHEET		4879
		<hr/> £363315 <hr/>
SPECIAL BUILDINGS, ENCLOSURES AND EQUIPMENT		
Balance at beginning of year at cost		1631092
Additions during year—cost		121327
		<hr/>
Sales during year		1752419
		296
		<hr/>
Less Grants from Penguin Appeal and Conservation Funds		1752123
		25045
		<hr/>
Less Depreciation at beginning of year	691147	1727078
Depreciation provided during year	75324	
		<hr/>
		766471
TOTAL AS SHOWN IN BALANCE SHEET		<hr/> £960607 <hr/>
ANIMALS		
Balance at beginning of year at cost less sales		156417
Additions during year—cost		12626
		<hr/>
Sales during year		169043
		11599
		<hr/>
TOTAL AS SHOWN IN BALANCE SHEET		<hr/> £157444 <hr/>
PENGUIN APPEAL FUND		
Balance at beginning of year		23902
Donations		3
		<hr/>
Less Grant towards cost of Penguin Pool		23905
		23905
		<hr/>
		£ —
CONSERVATION FUND		
Balance at beginning of year		658
Donations		482
		<hr/>
Less Grant towards cost of Rodrigues Fruit Bat Enclosure		1140
		1140
		<hr/>
		£ —

ACCOUNTING POLICIES

There have been no changes in the accounting policies during the year.

Basis of Accounting

The accounts have been prepared under the historical cost convention using the following accounting policies:—

Turnover: Cash receipts for goods and services excluding Value Added Tax.

Fixed Assets:

Properties—In accordance with practice adopted in previous years, no depreciation has been provided on freehold land or properties. It is the Society's policy to maintain its property in good condition, prolonging its useful life and making any depreciation provision immaterial. Repairs and maintenance costs are charged against income in the year as they are incurred. The Council is of the opinion that the market value of the Society's land and buildings is in excess of the book values. **Special Buildings, Enclosures and Equipment**—Depreciation is provided at rates varying between 10% and 20% p.a. estimated to write off each asset over the term of its useful life. The rates and method of depreciation are consistent with those used in previous years with the exception of the Gazelle restaurant and toilet block (cost £400,000) on which depreciation has been provided at 2% p.a. (straight line basis) expected to write off the cost over the term of its useful life. **Animals**—No valuation is made of the animal collection at the end of each year. Purchases and sales appear in the accounts in the year in which they arise.

Stock: Valued on a basis consistent with that used in previous years at the lower of cost or net realisable value.

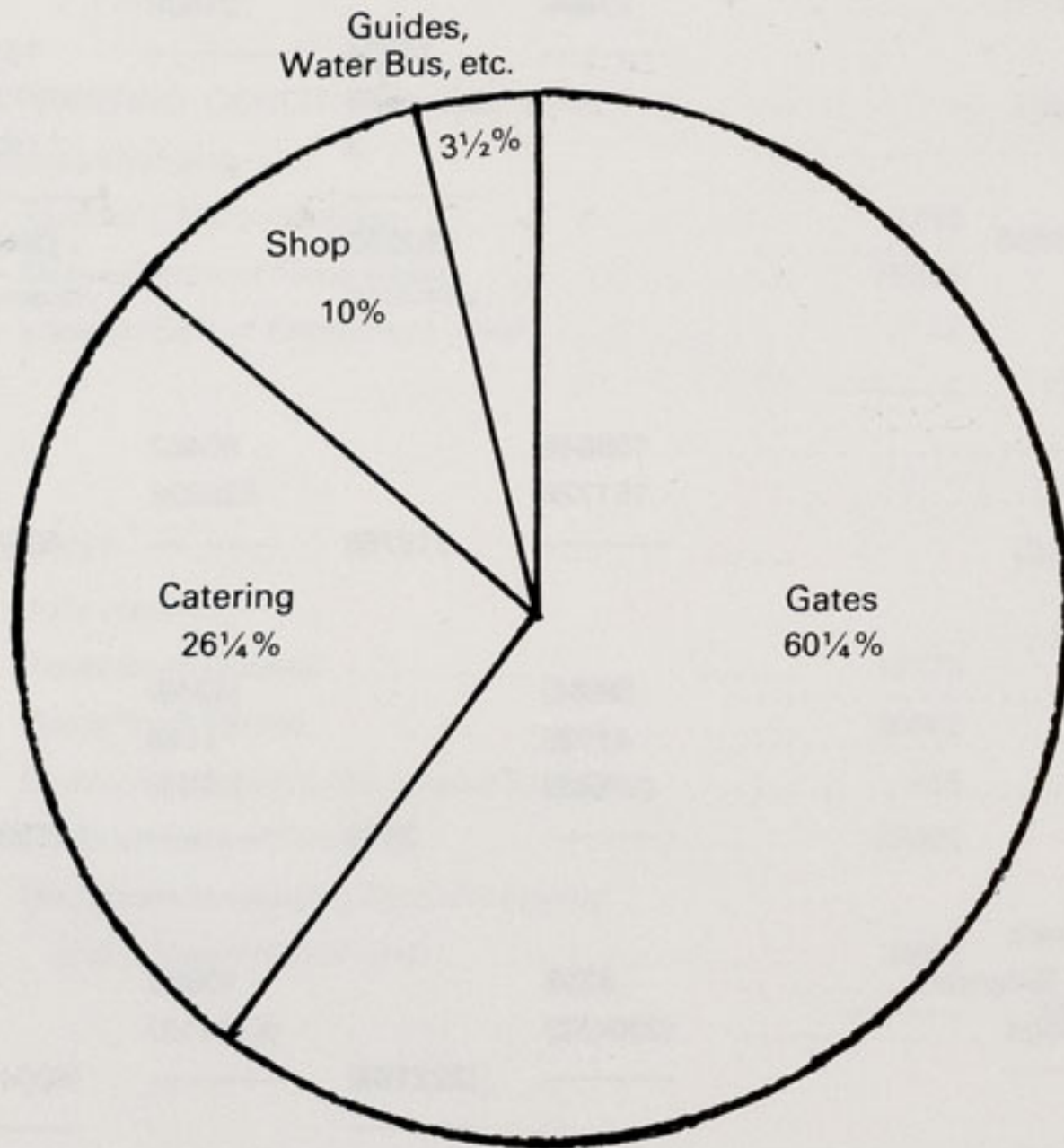
**INCOME AND EXPENDITURE ACCOUNT
FOR THE YEAR ENDED 31st DECEMBER, 1982**

	1982		1981	
	£	£	£	£
TURNOVER		£1779174		£1659941
		=====		=====
OPERATING DEFICIT FOR THE YEAR		(140081)		(22396)
before charging—				
Auditors' Remuneration	1750		1500	
Depreciation of Fixed Assets	75324		56455	
Loss on Sale of Equipment—Net	—		127	
		-----	-----	
		77074		58082
		-----		-----
DEFICIT		(217155)		(80478)
before crediting—				
Rents from Houses	10173		9734	
Rents from Farms	16062		4908	
Investment Income Received (Gross)	415		2322	
Profit on Sale of Property	27604		21533	
Donations (excluding Penguin Appeal and Conservation Fund)	3861		1680	
		-----	-----	
		58115		40177
		-----		-----
DEFICIT		(159040)		(40301)
and before charging—				
Interest on Capital Development not yet fully operational		—		20181
		-----		-----
DEFICIT FOR THE YEAR		(159040)		(60482)
<i>Add</i> Balance brought forward from last year				
Accumulated Surplus	731519		769669	
Legacy Account	—		22332	
		-----	-----	
		731519		792001
		-----		-----
BALANCE CARRIED FORWARD TO NEXT YEAR		£572479		£731519
		=====		=====

STATEMENT OF SOURCE AND APPLICATION OF FUNDS

	Year ended 31st December	
	1982	1981
SOURCE OF FUNDS		
Depreciation of Fixed Assets	75324	56455
Sale of Fixed Assets	44378	39529
Less Net Surplus thereon	27604	21406
	16774	18123
Conservation Fund	482	202
Penguin Appeal Fund	3	9710
	£92583	£84490
	£92583	£84490
APPLICATION OF FUNDS		
Deficit for the year	159040	60482
Purchase of Fixed Assets	151728	635328
	310768	695810
Changes in Working Capital		
(Decreased) Stocks	(9584)	(4349)
(Increased) Debtors	41125	1144
(Increased) Creditors	(27562)	(7701)
	3979	(10906)
Movement in Net Liquid Funds		
Increased Bank and Cash Balances	8288	10698
(Increased) Bank Borrowings	(230452)	(611112)
	(222164)	(600414)
	£92583	£84490

INCOME

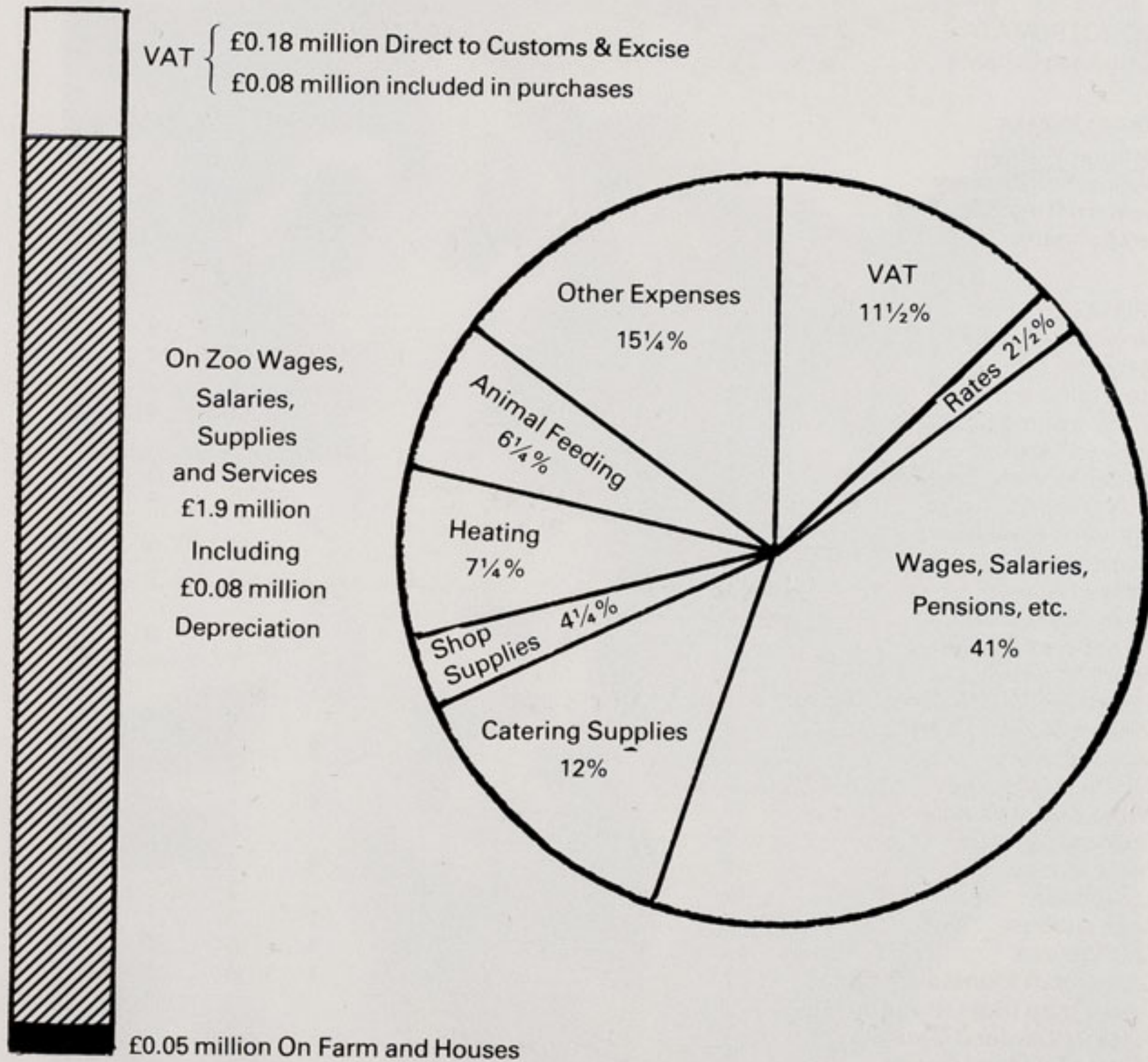


From Visitors
£2.00 million
including
£0.26 million
VAT

From Other Sources £0.07 million



EXPENDITURE



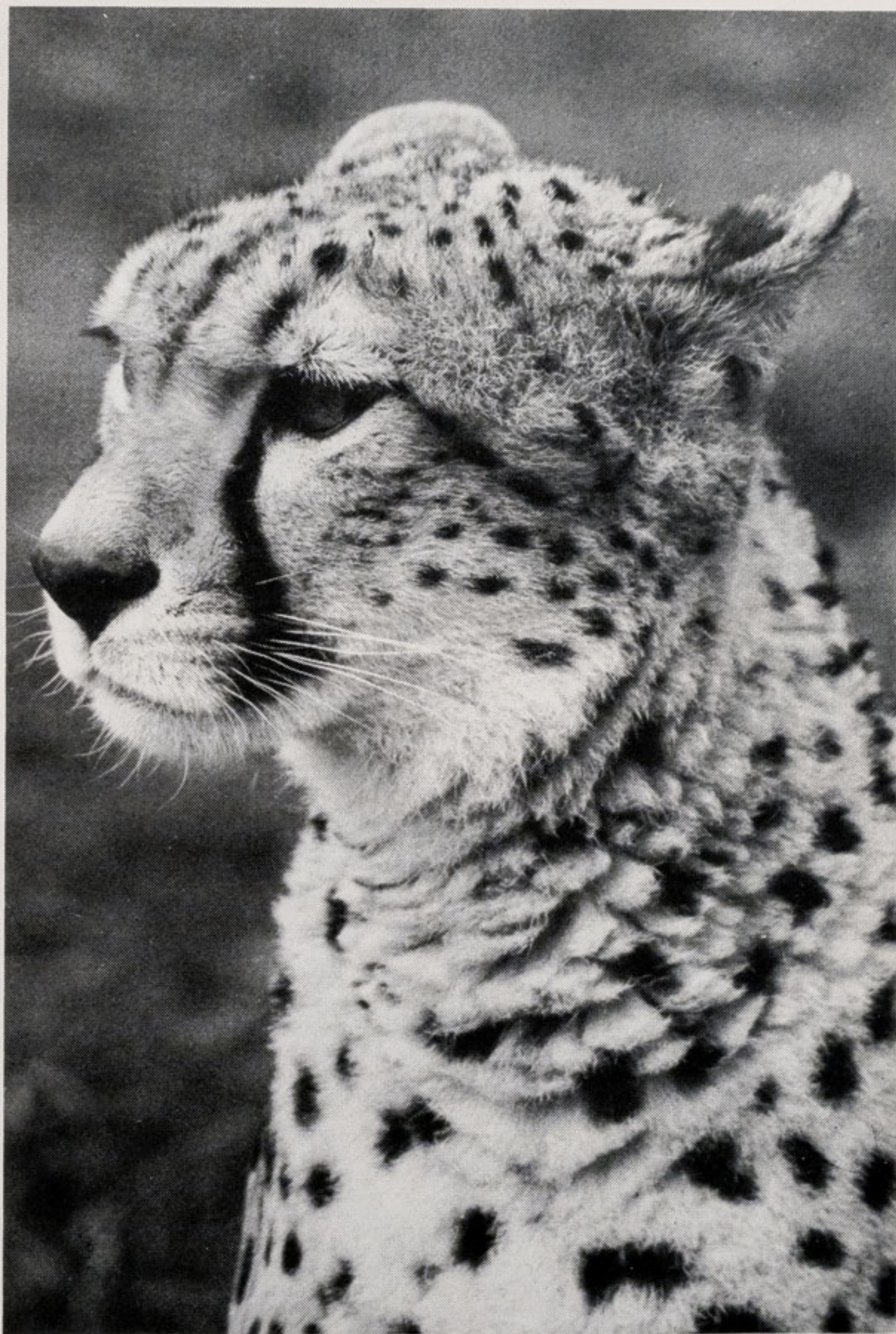
Expenditure on:—	1982	1981
	£	£
Animal Welfare	407233	390660
Gardens	131848	109510
Maintenance of Buildings, Grounds, Vehicles and Boats	188557	170021
	<u>£727638</u>	<u>£670191</u>

	1	2	3	4	5	6	7		
	Stock at 1st Jan., 1982	Rec'd	Births	D.N.S. within 30 days	Deaths excl. 4	Dis- posal inc. cull	Stock at 31st Dec., 1982		
							M	F	Y/?
MAMMALS									
MONOTREMATA									
Australian Echidna	2						1	1	
MARSUPIALIA									
Tammar Wallaby	7		2				2	3	4
Red-necked Wallaby	44		12		15	5			36
Western Grey Kangaroo	6		1			2	2	3	
Red Kangaroo	2						1	1	
PRIMATES									
Ring-tailed Lemur	21	3	5			11	9	9	
Mayotte Lemur	2	2	2	1	1		1	3	
Slow Loris	3						1	2	
White-fronted Capuchin	7						3	4	
Squirrel Monkey	4		1			2	3		
Spider Monkey (black-faced)	3	2	1				2	4	
Lion-tailed Macaque	5	4					5	4	
Pig-tailed Macaque	2					2			
Barbary Ape	12						5	7	
Celebes Ape	3	3			1		3	2	
Sooty Mangabey	3					3			
Hamadryas Baboon	9		5	1			5	8	
Grivet Monkey	2						1	1	
Sykes Guenon (Moloney's Form)	1					1			
Sykes x Moloney's Form	2						1	1	
Mona Monkey	4				1	3			
De Brazza Monkey	6				1	1	2	2	
White-nosed Guenon	3					1	1	1	
Talapoin Monkey	8	2					5	5	
Patas Monkey	12		1			4	2	7	
Lar Gibbon	2						2		
Agile Gibbon	2					1	1		
Chimpanzee	14	1				1	5	9	
Orang-utan (Bornean Form)	7					1	4	2	
Orang-utan (Sumatran Form)	2						1	1	
Western Lowland Gorilla	1						1		
Eastern Lowland Gorilla	1						1		
RODENTIA									
Malay Giant Squirrel	2						1	1	
Fire-footed Squirrel	5				2		2	1	
Prairie Marmot	140		30		20	7			143
Woodchuck	2				1		1		
Beaver	1	1						1	1
African Crested Porcupine	3						1	2	
Indian Crested Porcupine	2						1	1	
Capybara	5		1		1		1	1	3
Golden Agouti	4	6			3	1	3	3	
Coypu	11		8		1				18
Plain's Viscacha	1					1			
Mountain Viscacha	4				1		1	2	



Ring-tailed Lemurs
Courtesy of K. W. Green, A.R.P.S.

	1	2	3	4	5	6	7		
	Stock at 1st Jan., 1982	Rec'd	Births	D.N.S. within 30 days	Deaths excl. 4	Dis- posal inc. cull	Stock at 31st Dec., 1982		
							M	F	Y/?
CARNIVORA									
Black-backed Jackal	2						2		
Dingo	3		1	1			1	2	
Arctic Fox	4						2	2	
Fennec Fox	2				1		1		
Brown Bear	5					2	1	2	
Polar Bear	1	1					1	1	
Common Raccoon	2		2	2			1	1	
Coati	4		3			4	1	2	
Kinkajou	7						5	2	
Blotched Genet	5						3	2	
Striped Skunk	2						1	1	
Spotted Skunk	2						1	1	
African Civet	4					1	2	1	
Binturong	4						2	2	
African Banded Mongoose	2						1	1	
Marsh Mongoose	2					2			
Meerkat	2						2		
Pampas Cat	1				1				
Margay	3		1			1	2	1	
Jungle Cat	2		4			2	3	1	
Scottish Wild Cat	3		2				1	4	
Leopard Cat	1					1			
Caracal Lynx	2		2				1	1	2
Ocelot	3						1	2	
European Lynx	5				1	2		2	
Bobcat	1						1		
Serval	3				1		1	1	
Geoffroy's Cat	2		2				1	3	
Jaguarundi	4				1		1	2	
Puma	6	1	1	1		4	1	2	
Lion	4						1	3	
Tiger (Siberian Form)	2						1	1	
Leopard	2				1		1		
Leopard (Black Form)	2		2			2	1	1	
Leopard (Chinese Form)	4					2	1	1	
Jaguar	1	1			1		1		
Cheetah	2						1	1	
PINNIPEDIA									
Californian Sealion	3	2			1		1	3	
PROBOSCIDEA									
Indian Elephant	3						1	2	
PERISSODACTYLA									
Przewalski's Horse	2					1	1		
Onager (Persian)	4					1	1	2	
Onager x bred	2						1	1	
Common Zebra	12		1		1	1	4	7	
Grevy's Zebra	5				1	1	1	2	
Zebroid (Horse x Zebra)	1						1		
Malayan Tapir	1							1	
South American Tapir	7		2	1		3	2	3	
Black Rhinoceros	2						1	1	
White Rhinoceros	2						1	1	



Cheetah
Courtesy of K. W. Green, A.R.P.S.

	1	2	3	4	5	6	7		
	Stock at 1st Jan., 1982	Rec'd	Births	D.N.S. within 30 days	Deaths excl. 4	Dis- posal inc. cull	Stock at 31st Dec., 1982		
							M	F	Y/?
ARTIODACTYLA									
Collared Peccary	2				1		1		
Common Hippopotamus	3					1	1	1	
Llama	3		1			1	1	2	
Guanaco	10		6	1			5	10	
Alpaca	4					1	2	1	
Bactrian Camel	1	1					1	1	
Arabian Camel	3					1	1	1	
Axis Deer	8		2				7	3	
Wapiti	8		1		1	2	2	4	
Pere David's Deer	29		6		1		12	21	1
Reindeer	9		3	2			4	6	
Chinese Water Deer	3					1		2	
Giraffe	6				2	1		3	
Greater Kudu	2				1	1			
Eland	4		1				3	2	
Nilgai	6				1		3	2	
Ankole Cattle	4	1			1		2	2	
American Bison	8		3	1	1	1	3	5	
Red Lechwe	13		6		2	1	3	10	3
Beisa Oryx	1						1		
Wildebeeste	3		1				1	2	1
Blackbuck	6		2	1	1		2	3	1
Arabian Gazelle	12		6	2	4	1	4	7	
Bagot Goat	3		1				2	2	
Soay Sheep	22		14	1	1	20			14
TOTALS	705	31	145	15	75	109	204	251	227
							682		
							109 species		



Arabian Gazelle
 Courtesy of K. W. Green, A.R.P.S.



Black Rhinos
Courtesy of K. W. Green, A.R.P.S.



Californian Sealion
Courtesy of K. W. Green, A.R.P.S.

	1	2	3	4	5	6	7		
	Stock at 1st Jan., 1982	Rec'd	Births	D.N.S. within 30 days	Deaths excl. 4	Dis- posal inc. cull	Stock at 31st Dec., 1982		
							M	F	Y/?
BIRDS									
STRUTHIONIFORMES									
Ostrich	4				3			1	
RHEIFORMES									
Common Rhea	5		18	4	14	3	1	1	
CASUARIIFORMES									
Twin-wattled Cassowary	2					2			
Emu	3	1				2	1	1	
Chilean Tinamou	53		10	2	10	38			13
SPHENISCIFORMES									
Humboldt's Penguin	12		3	2			8	3	2
Blackfooted Penguin	12		7	5	1				13
CICONIIFORMES									
Common Grey Heron	2								2
Cattle Egret	2								2
Little Egret	1								1
Night Heron	9						4	1	4
Sacred Ibis	11		1			2			10
Straw-necked Ibis	5		3		1		2	2	3
Glossy Ibis	1				1				
Australian White Ibis	9				1		7	1	
Indian White Ibis		2	1				1	1	1
Chilean Flamingo	19	6			3		5	17	
Rosy Flamingo	9						5	4	
ANSERIFORMES									
Fulvous Tree Duck	3						1	2	
Black Swan	2		1		1		1	1	
Mute Swan	2	2				2	1	1	
Grey-lag Goose	1						1		
Lesser Snow Goose	9		7	6	1	5	2	1	1
Emperor Goose	2								2
Pink-footed Goose	1								1
Bar-headed Goose	5		2	2	1		2	2	
Ross's Snow Goose	2						1	1	
Canada Goose	5								5
Barnacle Goose	2				1				1
Hawaiian Goose	2						1	1	
Cereopsis Goose	2						1	1	
Andean Goose	2	1			1				
Common Shelduck	1								1
Common Pintail	3								3
Bahama Pintail	8		5		7		2	4	
Cinnamon Teal	1				1				
Wigeon	5		11		6		2	2	6
Red Shoveler	6						3	3	
Laysan Teal	7		9	2		3	10	1	
Chiloe Wigeon	4	2	9	3	2	1	8	1	
Gadwall	3				3				
Tufted Duck	8					2	4	2	
Rosy-billed Pochard	4		10	3	6		3	2	
Red-crested Pochard	4		4	4			2	2	



Spectacled Owl
Courtesy of K. W. Green, A.R.P.S.

	1	2	3	4	5	6	7		
	Stock at 1st Jan., 1982	Rec'd	Births	D.N.S. within 30 days	Deaths excl. 4	Dis- posal inc. cull	Stock at 31st Dec., 1982		
							M	F	Y/?
Mandarin Duck	12		17	13		7	4	5	
Carolina Duck	12		15	11	5	6			5
Maned Goose	5				2		2	1	
Muscovy Duck	1					1			
Aylesbury Duck	3								3
Red-Breasted Merganser		1				1			
FALCONIFORMES									
King Vulture	2				2				
Andean Condor	2	1				1	1	1	
White-headed Vulture	2	1					1	2	
Bateleur Eagle	2				1			1	
Wedge-tailed Eagle	2	1				1	1	1	
Golden Eagle	2					2			
GALLIFORMES									
Sclater's Crested Curassow	2	4				1	2	3	
Crested Guan	4		1				2	2	1
Blue Eared Pheasant	7				2	2	1	2	
Brown Eared Pheasant	2						1	1	
White Eared Pheasant	2						1	1	
Palawan Peacock Pheasant	2		1				1	2	
Viellot's Crested Fireback Pheasant	1						1		
Silver Pheasant	3		12		3	10	1	1	
Sonnerat's Jungle Fowl	4				1		1	2	
Common Peafowl	6		4			4	3	2	1
Guineafowl	2		6		2	6			
Bantams various	44	27			8	36	3	24	
GRUIFORMES									
Sarus Crane	5					1	2	2	
Lilford's Crane	1					1			
Demoiselle Crane	2							2	
Weka Rail	1				1				
White-breasted Waterhen	2				1				1
Purple Gallinule	3						1	1	1
Sun Bittern	2	1					1	1	1
White-breasted Rail		5							5
CHARADRIIFORMES									
Grey-headed Gull	4								4
Southern Stone Curlew	1	1					2		
Blacksmith's Plover	3								3
Crowned Plover	3		11	10			2	1	1
COLUMBIFORMES									
Chinese Necklaced Dove	1								1
Laughing Dove	2								2
Java Dove		1							1
Crested Bronzewing Pigeon	7	1	5		2	4			7
Mountain Witch Dove	2	4			1				5
Bleeding Heart Pigeon	2	2			1		2	1	
Hybrid Dove	1								1



Kookaburra Chick
Courtesy of K. W. Green, A.R.P.S.

	1	2	3	4	5	6	7		
	Stock at 1st Jan., 1982	Rec'd	Births	D.N.S. within 30 days	Deaths excl. 4	Dis- posal inc. cull	Stock at 31st Dec., 1982		
							M	F	Y/?
PSITTACIFORMES									
Red Lory	2						2		
Scaly-breasted Lorikeet	4				1				3
Edward's Lorikeet	2								2
Swainson's Lorikeet	7	1	3		5	2			4
Weber's Lorikeet	3				1				2
Ornate Lorikeet	2						1	1	
Varied Lorikeet	1					1			
Fig Parrot		4			4				
Dusky Lory	4						3	1	
Funereal Cockatoo	1					1			
White-tailed Black Cockatoo	2						1	1	
Bare-eyed Cockatoo		2					1	1	
Sulphur-crested Cockatoo	3					3			
Leadbeater's Cockatoo	2				1		1		
Moluccan Cockatoo	2						1	1	
Blue-eyed Cockatoo	9					1	3	4	1
Slender-billed Cockatoo	1					1			
Kea	2					1	1		
Grand Eclectus Parrot	2				1	1			
Red-sided Eclectus Parrot	4		2		2	2	1	1	
Crimson-winged Parrakeet	6		2		4		2		1
Amboina King Parrot	1							1	
Barraband Parrakeet	1	2	2	2	1		1	1	
Lesser Vasa Parrot		4			1		1	2	
Red-fronted Parrakeet	1								1
Vernall's Hanging Parrot		2					1	1	
Senegal Parrot	4	1					4	1	
African Grey Parrot	3	1			3		1		
Moustached Parrakeet	2					2			
Derbyan Parrakeet	8	2					4	4	
Ring-necked Parrakeet	2				1	1			
Hyacinthine Macaw -	2				1	1			
Blue and Yellow Macaw	7				2		4	1	
Red and Yellow Macaw	2						1	1	
Red-fronted Macaw	5	2						7	
Red-masked Conure	4		2				3	1	2
Yellow-billed Amazon Parrot		4					3	1	
Queen of Bavaria Conure	5	1				1	3	2	
Sun Conure	5				1		2	2	
Lesser Patagonian Conure	18		5		1	2	3	13	4
Maroon-tailed Conure	5						3	2	
Crimson-bellied Conure	3								3
Slender-billed Parrakeet	7					1	3	3	
Quaker Parrakeet	8				1	2			5
Yellow-faced Parrotlet	4		9	1	1		1	2	8
Red-capped Parrot	2		2	1	3				
Blue-fronted Amazon Parrot	7						6	1	
Barred Parrakeet		1							1
Lilacene Amazon Parrot		6			2			2	2
CUCULIFORMES									
Grey Go-away Bird	1								1
Renauld's Ground Cuckoo	2						1	1	
White-cheeked Tuaraco		2					1	1	



Blue-eyed Cockatoos
Courtesy of K. W. Green, A.R.P.S.

	1	2	3	4	5	6	7		
	Stock at 1st Jan., 1982	Rec'd	Births	D.N.S. within 30 days	Deaths excl. 4	Dis- posal inc. cull	Stock at 31st Dec., 1982		
							M	F	Y/?
STRIGIFORMES									
Barn Owl	4		4			3			5
Spotted Eagle Owl	4				1	1	1	1	
Great Eagle Owl	4					2	1	1	
Great Horned Owl	2		2	1			1	1	1
Fishing Owl	1							1	
Rufous Fishing Owl	2					2			
Spectacled Owl	2	3			1		1	3	
Snowy Owl	3	1	5		1	2	1	1	4
Boobook Owl	2	1				1	1	1	
Tawny Owl	1	1				2			
CAPRIMULGIFORMES									
Tawny Frogmouth	3				1		2		
CORACIIFORMES									
White-breasted Kingfisher	1								1
Kookaburra	6		1				4	3	
Indian Pied Hornbill		1						1	
Ground Hornbill	1						1		
Great Indian Hornbill	1							1	
Malabar Pied Hornbill	1				1				
PICIFORMES									
Red-headed Barbet	2				1			1	
Crimson-rumped Toucanet	3		1	1	2		1		
Toco Toucan	2	1			2				1
White Woodpecker		2					1	1	
PASSERIFORMES									
Orange-bellied Flowerpecker		4			1		2	1	
White-crowned Robin Chat	2								2
Black-throated Laughing Thrush	1				1				
Red-headed Laughing Thrush	5		4	3			2	2	2
White-crested Laughing Thrush	5	2	3	1			1	1	7
Pekin Robin	4					4			
Blue-headed Tanager		4							4
Black-eared Golden Tanager	2					2			
Crested Oropendola	9		1		1				9
Yellow-headed Troupial	2					1	1		
Altimira Oriole		1					1		
Boat-tailed Grackle	1						1		
Brown and Yellow Marshbird	2				1				1
Common Rosefinch	3					3			
Orange-cheeked Waxbill	6				5				1
Red-eared Waxbill	8				7				1
Red Avadavat	1				1				
Zebra Finch	2	1	4	2					5
White-headed Nun	1				1				
Silverbill	4					4			
Java Sparrow	2								2
Cowbird		2					1	1	
Golden Weaver	4					4			
Baya Weaver	4				2				2
Red-billed Weaver	15				1				14

	1	2	3	4	5	6	7		
	Stock at 1st Jan., 1982	Rec'd	Births	D.N.S. within 30 days	Deaths excl. 4	Dis- posal inc. cull	Stock at 31st Dec., 1982		
							M	F	Y/?
Napolean Weaver	2					1			1
Long-tailed Glossy Starling	4					1			3
Glossy Starling	3								3
Spotted-wing Stare	1					1			
Jerdon's Starling	2						1	1	
Rothschild's Mynah	3						1	2	
Jungle Mynah	2					1			1
Hunting Cissa	1								1
Occipital Blue Pie	2				1				1
	733	119	225	85	160	199	206	201	226
							633		
							159 species		



Great Indian Hornbill
Courtesy of I. Gwyn Jones

	1	2	3	4	5	6	7		
	Stock at 1st Jan., 1982	Rec'd	Births	D.N.S. within 30 days	Deaths excl. 4	Dis- posal inc. cull	Stock at 31st Dec., 1982		
							M	F	Y/?
REPTILES									
RHYNCHOCEPHALIA									
Tuatara	2						1	1	
TESTUDINATA									
Greek Tortoise		6			1		3	2	
Herman's Tortoise		6				2	2	2	
Burmese Brown Tortoise	3						1	2	
Aldabra Giant Tortoise	5						1	4	
Leopard Tortoise	2					2			
Spurred Tortoise	5	1			1	2	1	2	
Blackish Mud Terrapin	2				1	1			
Matamata Turtle	2								2
Nile Soft-shelled Turtle	1								1
Spiny Soft-shelled Turtle		9							9
Siamese Soft-shelled Turtle	1	1							2
Geographic Terrapin	2								2
Red-eared Terrapin	2				1				1
Marsh Terrapin	1								1
SAURIA									
Tocko Gecko	7		8		1		1	1	12
Day Gecko	3				1				2
Leopard Gecko	13		65		2	58	2	11	5
Mexican Beaded Lizard	2	1					1	2	
Gila Monster	1					1			
Zonure	4								4
Anolis Lizard	2				1		1		
Common Iguana	6	2			2		6		
Rhinoceros Iguana	8					1	5	2	
Thailand Water Dragon	3	2					1	1	3
Eastern Water Dragon	1							1	
Plated Lizard	2						1	1	
Cunningham's Skink	1							1	
Major Skink	1					1			
Shingleback Lizard	4								4
Pink-tongued Skink	1	1			1				1
Blue-tongued Skink	2								2
New Guinea Blue-tongued Skink	2	2	10	4	1	4	1	1	3
Prehensile-tailed Skink	10		3	1	1				11
Haitian Giant Skink	6				1				5
Horned Mountain Agama		14			8				6
Canary Island Lizard		2			2				
Teguexin	2	1					1	1	1
Green Tree Monitor	2	1							3
Bengal Monitor	1								1
Gould's Monitor	2				1		1		
Salvator Monitor	2						1	1	
Timor Monitor	2						1	1	
Nile Monitor		1							1
Rough-necked Monitor		1							1
Glass Snake	1								1



New Guinea Blue-tongued Skink
Courtesy of K. W. Green, A.R.P.S.



Prehensile-tailed Skink
Courtesy of K. W. Green, A.R.P.S.

	1	2	3	4	5	6	7		
	Stock at 1st Jan., 1982	Rec'd	Births	D.N.S. within 30 days	Deaths excl. 4	Dis- posal inc. cull	Stock at 31st Dec., 1982		
							M	F	Y/?
SERPENTES									
Children's Python	1					1			
D'Alberti's Python	3						1	2	
Macklot's Python	2				1	1			
Carpet Python	2						1	1	
Indian Python	2	1				1	1	1	
African Python	2						1	1	
Reticulated Python		6			1				5
Green Tree Python	2	1			1		1	1	
Anaconda	2						1	1	
Boa Constrictor	2				1			1	
Cuban Boa	2		5				1	1	5
Pacific Boa	2						1	1	
Madagascan Tree Boa	3						2	1	
Royal Python	1								1
Cooke's Tree Boa		2				2			
King Snake		2					1	1	
Brown Tree Snake	4								4
Boomslang	2				2				
Mandarin Snake		3			2				1
Indian Cobra		2					1	1	
Black and White Cobra	2						1	1	
Green Mamba	2						1	1	
False Water Cobra		2				2			
Banded Krait		2			1				1
Blue Krait		1							1
Puff Adder		1							1
Cerastes Viper	2								2
Gaboon Viper	1							1	
Rhinoceros Viper		3					1	2	
Emerald Pit Viper	1	2			1				2
Bamboo Pit Viper	1	4	9	8	4				2
Wagler's Pit Viper		6			6				
Lance-headed Snake		1							1
Cantil Moccasin	2	2					2	2	
Black-tailed Rattlesnake		1							1
Western Diamond-backed Rattlesnake	2	1			2			1	
Green Rock Rattlesnake		1							1
Mexican Rattlesnake	1				1				
Pygmy Rattlesnake	4				1		1	2	
CROCODYLIA									
Mississippi Alligator	3						2	1	
Broad-fronted Crocodile	3						2	1	
Johnston's River Crocodile	2						1	1	
	177	95	100	13	50	79	55	63	112
							230		
							76 species		

AMPHIBIA

Black Axolotl	<i>Amblystoma mexicanum</i>	10
White Axolotl	<i>Amblystoma mexicanum</i>	10
South African Clawed Frog	<i>Xenopus laevis</i>	4
Nigerian Clawed Frog	<i>Xenopus tropicalis</i>	5
Italian Crested Newt	<i>Triturus cristatus carniflex</i>	1
Japanese Fire-bellied Newt	<i>Cynops pyrrhogaster</i>	3
Australian Tree Frog	<i>Litoria caerulea</i>	11
Cuban Tree Frog	<i>Hyla sepenrionalis</i>	3
	<i>Hyla rubra</i>	2
Horned Frog	<i>Ceratophrys ornata</i>	3
Golden Tree Frog	<i>Rhacophoeous Sp.</i>	5
	11 species	57

FISH

Acipenseridae		
Sterlet	<i>Acipenser ruthenus</i>	3
Osteoglossidae		
South American Arowana	<i>Osteoglossum bicirrhosum</i>	1
Asiatic Arowana	<i>Scleropages formosus</i>	1
Gymnotidae		
Banded Knife Fish	<i>Gymnotus carapo</i>	1
Notopteridae		
African Knife Fish	<i>Xenomystus nigri</i>	12
Clown Knife Fish	<i>Notopterus chitala</i>	1
Sternarchidae		
Black Ghost Knife Fish	<i>Apteronotus albifrons</i>	2
Mormyriadae		
Long Nosed Elephant Trunkfish	<i>Gnathonermus petersi</i>	7
Round Nosed Elephant Trunkfish	<i>Gnathonermus stanleyanus</i>	1
Gymnarchidae		
Electric Fish	<i>Gymnarchus niloticus</i>	1
Anguillidae		
Common Eel	<i>Anguilla anguilla</i>	1
Polypteridae		
Birchirs	<i>Polypterus senagalis</i>	3
Characidae		
Silver Dollar	<i>Metynnis hypsauchen</i>	1
Silver Dollar	<i>Metynnis calichromus</i>	2
Silver Dollar	<i>Metynnis maculatus</i>	1
Red-eyed Tetra	<i>Moenkhausia sanctae filomenae</i>	9
Black Widow Tetra	<i>Gymnocorymbus ternetzi</i>	12
Glowlight Tetra	<i>Hemigrammus erythrozonus</i>	40
Neon Tetra	<i>Hyphessobrycon innesi</i>	30
Lemon Tetra	<i>Hyphessobrycon pulchripinnis</i>	25
	<i>Pyrrhulina stoli</i>	30

Glass Tetra	<i>Moenkhausia oligolepis</i>	1
Emperor Tetra	<i>Nematobrycon palmeri</i>	25
Rosy Tetra	<i>Hyphessobrycon bentosi</i>	20
Blind Cave Fish	<i>Anoptichthys jordani</i>	8
Silver Tetra	<i>Stenobrycon spilurus</i>	1
Cardinal Tetra	<i>Cheirodon axelrodi</i>	21
Red-eyed Characin	<i>Arnoldichthys spilopterus</i>	7
Long-finned Characin	<i>Alestes longipinnis</i>	10
Congo Tetra	<i>Micralestes interruptus</i>	27
Rummy-nosed Tetra	<i>Hemmigrammus rhodostomus</i>	7
Pacu	<i>Colossoma nigripinnis</i>	2
Serpae Tetra	<i>Hyphessobrycon serpae</i>	1
Pretty Tetra	<i>Hemigrammus pulcher</i>	1
Piranha	<i>Rooseveltiella nattereri</i>	4
Penguin Fish	<i>Thayesia obliqua</i>	4
Spraying Characin	<i>Copeina arnoldi</i>	5
Platinum Tetra	<i>Gephyrocharax atacaudatus</i>	8
Bleeding Heart Tetra	<i>Hyphessobrycon rubrostigma</i>	10
Black-line Tetra	<i>Hyphessobrycon scholzei</i>	13
X-Ray Fish	<i>Pristella riddlei</i>	2
Black Phantom Tetra	<i>Megalamphodus megalopterus</i>	2
Red Phantom Tetra	<i>Megalamphodus sweglesi</i>	4
Anostomidae		
Marbled Headstander	<i>Abramites microcephalus</i>	5
Striped Anostomus	<i>Anostomus anostomus</i>	15
Three Spot Anostomus	<i>Anostomus trimaculatus</i>	1
	<i>Leporinus affinis</i>	1
	<i>Leporinus striatus</i>	5
Pellegrin's Leporinus	<i>Leporinus pellegrini</i>	7
Citharinidae		
	<i>Distichodus affinis</i>	1
	<i>Distichodus sexfasciatus</i>	1
Gasteropelecidae		
Marbled Hatchetfish	<i>Carnegiella strigata</i>	9
Silver Hatchetfish	<i>Gasteropelecus sternicla</i>	16
Cyprinidae		
Bream	<i>Abramis brama</i>	4
Mirror Carp	<i>Cyprinus carpio</i>	17
Golden Orfe	<i>Idus idus</i>	17
Golden Rudd	<i>Scardinius erythrophthalmus</i>	7
Tench	<i>Tinca tinca</i>	1
Varieties of Goldfish	<i>Carassius auratus</i>	130
Koi Carp	<i>Cyprinus carpio</i>	6
Silver Shark	<i>Balantiocheilus melanopterus</i>	1
Zebra Danio	<i>Brachydanio rerio</i>	36
Giant Danio	<i>Danio malabaricus</i>	1
Red-tailed Black Shark	<i>Labeo bicolor</i>	5
Black Shark	<i>Morulius chrysophekadion</i>	2
Festive Shark	<i>Labeobarbus festiva</i>	4
Bony Lipped Barb	<i>Osteochilus hasselti</i>	1
Hi-goï Carp	<i>Cyprinus carpio</i>	8
Rosy Barb	<i>Barbus conchoni</i>	20
Cumings Barb	<i>Barbus cumingi</i>	28
Clown Barb	<i>Barbus everetti</i>	8
Striped Barb	<i>Barbus fasciatus</i>	2

Filament Barb	<i>Barbus filamentosus</i>	1
Spanner Barb	<i>Barbus lateristriga</i>	1
Nigger Barb	<i>Barbus nigrofasciatus</i>	12
Red Cheek Barb	<i>Barbus orphoides</i>	2
Scissor Tail Rasbora	<i>Rasbora trilineata</i>	3
Tiger Barb	<i>Barbus tetrazona</i>	15
Golden Barb	<i>Barbus shurberti</i>	15
Tinfoil Barb	<i>Barbus schwanenfeldi</i>	9
Yellow Barb	<i>Barbus species</i>	1
Harlequin Fish	<i>Rasbora hetromorpha</i>	6
Red-tailed Scissor Tail	<i>Rasbora caudimaculata</i>	1
Flying Fox	<i>Epalzeorhynchus kallopterus</i>	4
Elegant Rasbora	<i>Rasbora lateristriata elegans</i>	9
Gyrinocheilidae		
Sucking Loach	<i>Gyrinocheilus aymonieri</i>	50
Cobitidae		
Skunk Botia	<i>Botia horae</i>	1
Red-tailed Botia	<i>Botia modesta</i>	2
Hemiramphidae		
Half-beak	<i>Dermogenys pusillus</i>	7
Centropomidae		
Indian Glassfish	<i>Chanda ranga</i>	12
Australian Glassfish	<i>Chanda agassizi</i>	12
Cichlidae		
Jack Dempsey	<i>Cichlasoma octofasciatum</i>	2
Blue Acara	<i>Aequidens pulcher</i>	1
Oscar or Marbled Cichlid	<i>Astronotus ocellatus</i>	3
Texas Cichlid	<i>Cichlasoma cyanoguttatum</i>	18
Convict Cichlid	<i>Cichlasoma nigrofasciatum</i>	1
Albino Convict Cichlid	<i>Cichlasoma nigrofasciatum</i>	12
Banded Cichlid	<i>Cichlasoma severum</i>	5
Blue-eyed Cichlid	<i>Cichlasoma spilurum</i>	4
Red Devil Cichlid	<i>Cichlasoma erythroenum</i>	36
Varieties of Angelfish	<i>Pterophyllum scalare</i>	24
Discus	<i>Symphysodon discus</i>	6
Burton's Mouthbrooder	<i>Haplochromis burtoni</i>	45
Jewel Cichlid	<i>Hemichromis bimaculatus</i>	8
Maria's Tilapia	<i>Tilapia maria</i>	5
Mozambique Mouthbrooder	<i>Tilapia mossambica</i>	2
Zillis Tilapia	<i>Tilapia zilli</i>	2
Hornet Tilapia	<i>Tilapia buttikoferi</i>	2
Rainbow Cichlid	<i>Herotilapia multispinosa</i>	2
Livingstone's Mbuna	<i>Pseudotropheus livingstoni</i>	32
Ocellated Cichlid	<i>Cichla ocellaris</i>	1
Brown Acara	<i>Aequidens portalegrensis</i>	2
Fire-mouth Cichlid	<i>Cichlasoma meeki</i>	3
	<i>Pelmatochromis kribensis</i>	1
Eleotridae		
Chameleon Goby	<i>Hyperselectris guntheri</i>	5
Broad-headed Sleeper Goby	<i>Dormitator latifrons</i>	1
African Goby	<i>Eleotris species</i>	3
Rainbow Goby		4

Anabantidae		
Comb-tailed Paradise Fish	<i>Belontia signata</i>	24
Giant Gourami	<i>Osphronemus goramy</i>	3
Pearl Gourami	<i>Trichogaster leeri</i>	12
Moonlight Gourami	<i>Trichogaster microlepis</i>	2
Three-spot Gourami	<i>Trichogaster trichopterus</i>	17
Tail-spot Climbing Perch	<i>Ctenopoma kingsleyae</i>	3
Paradise Fish	<i>Macropodus opercularis</i>	6
Atherinidae		
Australian Rainbow Fish	<i>Melanotaenia nigrans</i>	24
New Guinea Rainbow Fish	<i>Glossolepis incisus</i>	35
Siluridae		
Helicopter Catfish	<i>Ompok pabda</i>	2
Bagridae		
Bumblebee Catfish	<i>Leiocassis poecilopterus</i>	3
Catfish	<i>Parauchenoglanis macrostoma</i>	1
Chacidae		
Frogmouth Catfish	<i>Chaca chaca</i>	1
Schilbeidae		
Congo Catfish	<i>Etropiella debauwi</i>	6
Clariidae		
Albino Clarias Catfish	<i>Clarias batrachus</i>	1
Mochokidae		
Upside-down Catfish	<i>Synodontis species</i>	8
Pimelodidae		
Catfish	<i>Pimelodus pictus</i>	4
Shovel-nose Catfish	<i>Sorubim lima</i>	2
Tiger Shovel-nose Catfish	<i>Pseudoplatystoma fasiatum</i>	1
Catfish	<i>Pimelodus clarias</i>	1
Melapterusidae		
Electric Catfish	<i>Malapterurus electricus</i>	1
Callichthyidae		
Bronze Catfish	<i>Corydoras aeneus</i>	9
Agassiz's Catfish	<i>Corydoras agassizi</i>	4
Leopard Catfish	<i>Corydoras julii</i>	2
Albino Bronze Catfish	<i>Corydoras aeneus</i>	9
Peppered Catfish	<i>Corydoras paleatus</i>	30
Porthole Catfish	<i>Hoplosternum species</i>	1
	<i>Corydoras metae</i>	2
Arched Corydoras	<i>Corydoras arcuatus</i>	1
	<i>Corydoras bondi</i>	6
Loricasiidae		
Plecostomus Catfish	<i>Hypostomus plecostomus</i>	16
Bristle-nosed Plecostomus	<i>Xenocara species</i>	2
Clown Plecostomus	<i>Plecostomus species</i>	2
Royal Plecostomus	<i>Panaque nigrolinatus</i>	1

Cyprinodontidae		
Guppy	<i>Lebistes reticulatus</i>	40
Liberty Molly	<i>Mollienesia sphenops</i>	90
Tuxedo Swordtail	<i>Xiphophorus helleri</i>	50
Green Swordtail	<i>Xiphophorus helleri</i>	100
Red Swordtail	<i>Xiphophorus helleri</i>	5
Red Wagtail Platy	<i>Xiphophorus maculatus</i>	80
Doradidae		
Talking Catfish	<i>Doras hancocki</i>	1
Spotted Talking Catfish	<i>Doras pectinifrons</i>	2
Striped Talking Catfish	<i>Doras species</i>	2
Driftwood Catfish		20
Two-spot Catfish		3
Monodactylidae		
Finger Fish	<i>Monodactylus argenteus</i>	1
Ctenoluciidae		
Pike Characin	<i>Boulengerella lucius</i>	1
Potamotrygonidae		
Fresh-water Stingray	<i>Potamotrygon species</i>	7
Dipnoi		
African Lung Fish	<i>Protopterus annectens</i>	1
South American Lung Fish	<i>Lepidosiren paradoxa</i>	1
Ophichthyidae		
Black Spotted Snake Eel	<i>Myrichthys species</i>	1
Pomacentridae		
Common Clownfish	<i>Amphiprion ocellaris</i>	1
White-tailed Humbug Damsel Fish	<i>Dascyllus aruanus</i>	1
Tomato Clown Fish	<i>Amphiprion frenatus</i>	1
Saddle Clown Fish	<i>Amphiprion polymnus</i>	1
Yellow-tailed Blue Damsel Fish	<i>Pomacentrus melanochir</i>	7
Maroon Clown Fish	<i>Premnas biaculeatus</i>	1
Fire Clown Fish	<i>Amphiprion ephippium</i>	2
Scatophagidae		
Scat	<i>Scatophagus argus</i>	1
Diodontidae		
Spiny Puffer Fish	<i>Chilomycterus antennatus</i>	1
Acanthuridae		
Regal Tang	<i>Paracanthurus hepatus</i>	1
Clown Surgeon Fish	<i>Acanthurus lineatus</i>	1
Yellow Tang	<i>Zebrasoma flavescens</i>	1
Anthiidae		
Lyre-tailed Coral Fish	<i>Anthias squamipinnis</i>	2
Siganidae		
Fox Face	<i>Lo vulpinus</i>	1
Monacanthidae		
Long-nosed File Fish	<i>Oxymonacanthus longirostris</i>	1

Blenniidae		
Sabre-fin Blenny	<i>Ptereleotris splendidum</i>	3
Silk-shot Blenny	<i>Pogonoculius zebra</i>	4
Chaetodontidae		
Copperband Butterfly Fish	<i>Chelmon rostratus</i>	1
Labridae		
Brown-striped Wrasse		3
Bird-mouth Wrasse	<i>Gomphosus varius</i>	1
Bi-colour Wrasse	<i>Hemigymnus melapterus</i>	1
Orange-lined Wrasse	<i>Thalassoma lutescens</i>	1
Green Wrasse		1
Scorpaenidae		
Scorpion Fish	<i>Pterois volitans</i>	1
Scorpion Fish	<i>Dendrochirus zebra</i>	1
	189 species	1808

INVERTEBRATES		
Crustacea		
Banded Coral Shrimp	<i>Stenopus hispidus</i>	1
Hermit Crab	<i>Dardanus megistos</i>	1
Shore Crab		10
Cleaner Shrimp	<i>Lysmata grabhami</i>	1
Echinoderms		
Slate-pencil Sea Urchin		2
Common Star Fish		1
Coelenterates		
Beadlet Anemone	<i>Actina equina</i>	92
Sea Anemone	<i>Stoichactis species</i>	3
Branched Sea Anemone	<i>Lebrunia danae</i>	1
Snake-lock Anemone	<i>Cridopus verator</i>	9
Tube Anemone	<i>Cerianthus species</i>	2
	11 species	123

STOCK AT 31st DECEMBER, 1982

Mammals	109 species	682 specimens
Birds	159 species	633 specimens
Reptiles	76 species	230 specimens
Amphibians	11 species	57 specimens
Fish	189 species	1808 specimens
Invertebrates	11 species	123 specimens
Total	555 species	3533 specimens

