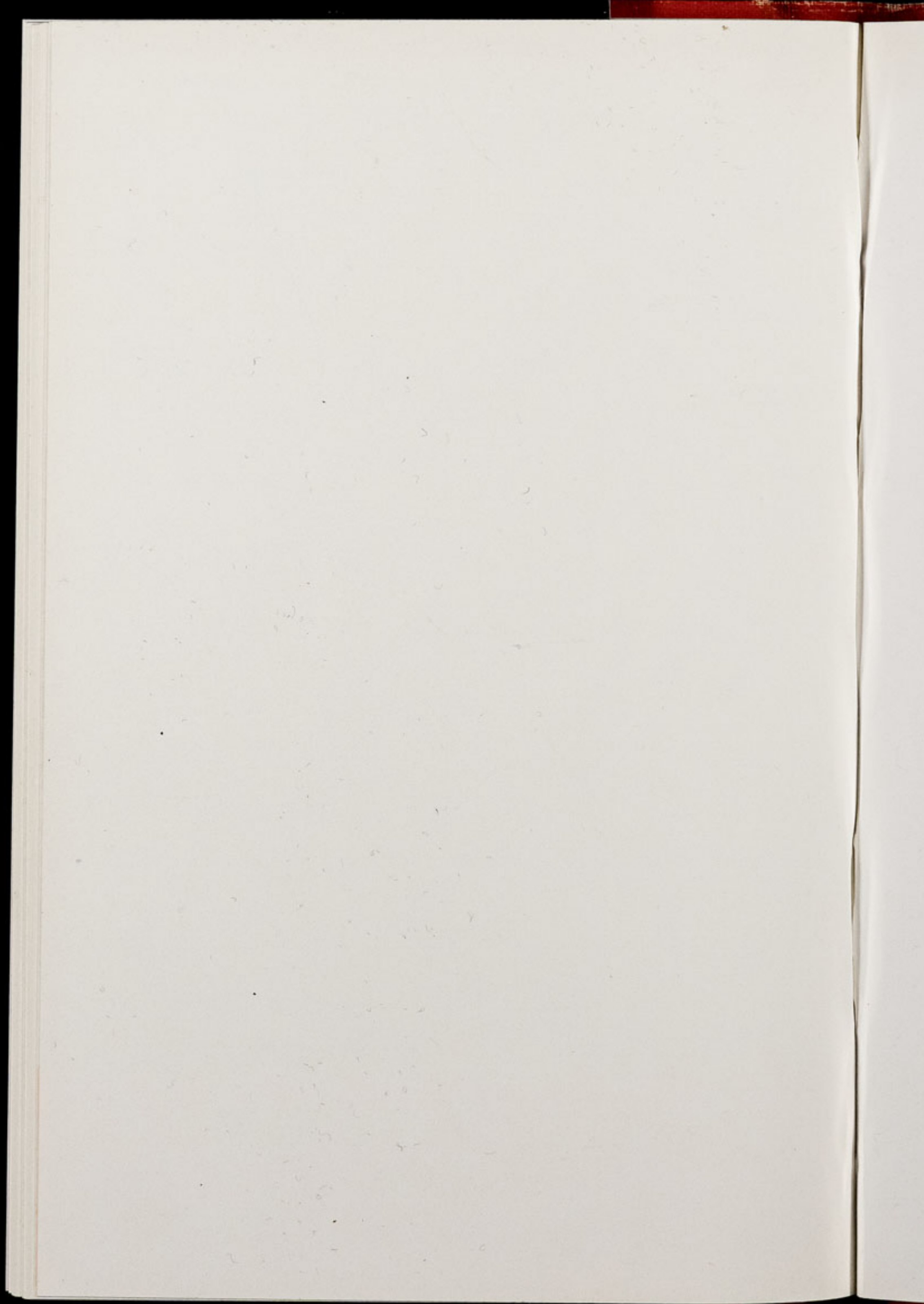




**CHESTER ZOO NEWS**  
***AND GUIDE***

July 1976

Price 12p



The North of England Zoological Society  
ZOOLOGICAL GARDENS, UPTON-BY-CHESTER

COUNCIL

PROF. J. O. L. KING, Ph.D., M.V.Sc., B.Sc.(Agric.), F.R.C.V.S. (Chairman)  
HER GRACE SALLY DUCHESS OF WESTMINSTER  
H. F. PARKER  
J. N. WILSON  
J. A. KILPATRICK, M.B., Ch.B., F.R.C.S.E.  
F. MOSFORD  
H. D. COOPER, F.I.M., F.I.F.F. Cert., A.I.B.  
A. K. McGHIE, A.I.B.  
G. R. PRYOR, C.Eng., Hon.F.I.Prod.E., F.B.I.M.  
A. J. BLAND, Dipl.Arch.R.I.B.A.  
R. P. OWEN, A.R.I.C.S.  
MRS. B. H. IRVINE  
F. S. CARSON, M.C., B.A.(Cantab.)  
DR. J. E. D. CHARLES-JONES, M.B., B.S., M.R.C.G.P.  
DINAH, LADY TOLLEMACHE  
G. S. MOTTERSHEAD, O.B.E., M.Sc., *Director-Secretary*

CONTENTS

<i>page two</i>	Arrivals and Births
<i>page five</i>	Bird Notes
<i>pages eight/nine</i>	Zoo Plan
<i>page eleven</i>	Aquarium News
<i>page fourteen</i>	Gardening Notes
<i>page sixteen</i>	Retirement of Mr. P. W. Gallup—Presentation Subscriptions

ILLUSTRATIONS

<i>page three</i>	Newly-born female Onager with its mother
<i>page seven</i>	Night Heron
<i>page twelve</i>	Piranha to be seen in the Aquarium
<i>page fifteen</i>	Group photograph taken at the presentation to Mr. P. W. Gallup

COVER

*Young Hamadryas Baboon*  
*By courtesy of J. Walker, Daily Mirror*

---

Annual subscription — Two Pounds Twenty-four pence, postage paid  
Telephone Chester 20106/7/8

### ARRIVALS AND BIRTHS

Since our last report the following mammals have been bred in the zoo.

- 2 Tiger Cubs (*Panthera tigris*)
- 2 Puma Cubs (*Felis concolor*)
- 1 Onager (*Equus hemionus onager*)
- 1 Wapiti (*Cervus canadensis*)
- 3 Black Panther x Common Leopard Cubs (*Panthera pardus*)
- 1 Barbary Ape (*Macaca sylvana*)

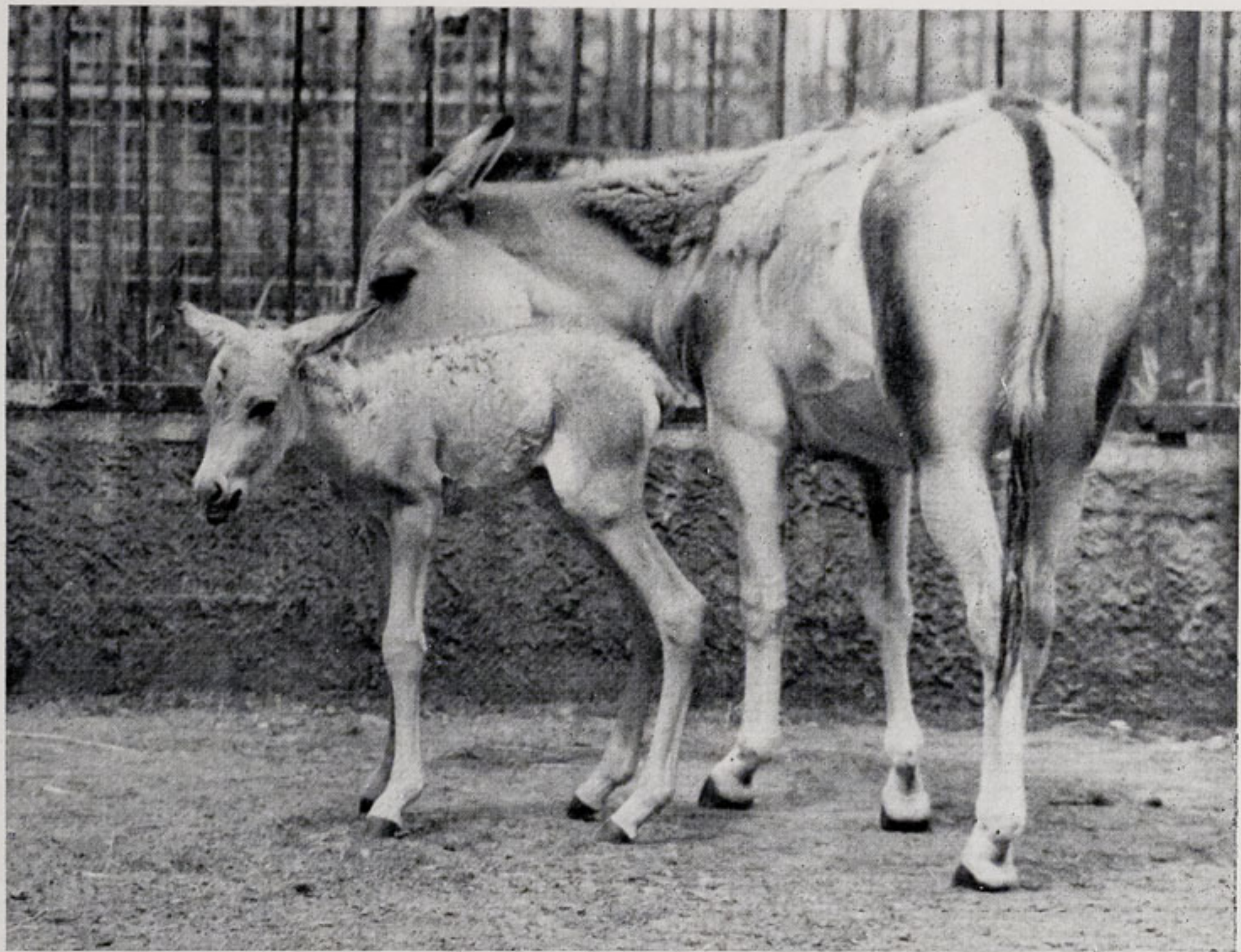
Two tiger cubs have been bred from our original breeding pair of Bengal Tigers, "Isis" and "Pharoah". This is their second litter as "Ranji", a female, was also bred by them in the Zoo in September 1974.

Mother and babies are not on show, having been separated from the father. They are in the breeding den where they will remain for the next few months. We are looking forward to having the youngsters on show. Our collection of tigers now consists of three breeding pairs, two Bengal and one Siberian. It is not yet possible to sex the three cubs.

Puma Cubs bred recently are also off-show and have not yet been sexed. They too are in the breeding den with their mother.

The distribution of the Puma is North and South America, ranging from British Columbia in the north to Tierra del Fuego in the south. Its habitat is the pine, deciduous and tropical forests, grasslands, and dry cactus-growing deserts. Those pumas which exist in the tropics are comparatively small; in cooler climates they are the size of the leopard.

Adult animals are a plain greyish-brown colour, but the young are heavily marked with black spots, which fade as they grow older. The gestation period for the Puma is three months, the normal litter producing two or three young.



By courtesy of K. W. Green, A.R.P.S.  
NEWLY BORN FEMALE ONAGER (*Equus hemionus onager*) WITH HER MOTHER (*Equus hemionus kulan*)

We are pleased to report the birth of a female Onager or Asiatic Wild Ass (*Equus hemionus onager*) whose antecedents originate from southern Persia. The mother is a Kulan or Transcaspian Wild Ass (*Equus hemionus kulan*), so named because the race is to be found in the central regions of Mongolia. She has bred three males, the first one having died, and we have been waiting anxiously for a female to add to the collection. We acquired the father, an Onager, in June 1964. The names Onager and Kulan do not indicate independent species but merely the geographical race of the Wild Ass. These animals are endangered in the wild.

The Asiatic Wild Ass is sand-coloured, and it has a short, erect mane. The end of the tail has a tufted appearance as the hairs are longer than those of the rest of the body. Onagers are smaller and lighter in colour than the Kulan. Eleven to twelve months is the gestation period for these animals.

Mother and daughter can be seen in Enclosure 39, and the father is housed very near to his "family". There is a photograph of the young Onager and her mother on page 3.

\* \* \*

We have had a Wapiti birth at the zoo. These animals breed well in captivity, and our stock now consists of nine. The herd can be seen in Enclosure No. 3 near the South Entrance.

Wapiti originate from North America where they live gregariously in mountainous districts. They feed on grasses, twigs and leaves. When food becomes scarce they are obliged to migrate to lower ground where the snow is not so deep. When mating the male has a high-pitched roar. The gestation period for the Wapiti is 249 to 262 days, and usually one calf is bred. Wapiti have a life expectancy of about 22 years. Adult males possess a magnificent set of antlers, measuring about 1.75 metres along the beam.

\* \* \*

An interesting breeding is that of the three Black Panther x Common Leopard Cubs (*Panthera pardus*). A Black Panther was

paired with a normal coloured female and they have produced one cub which is black, one a sandy-yellow colour, and the other is a normal coloured Leopard. It will be a few weeks before these cubs are on show, but we feel sure visitors to the Zoo will be anxious to see them when the time arrives.

Our troop of Barbary Apes now stands at eight, not including the latest breeding. Unfortunately the dominant female took the infant from its mother, and it therefore died as the older female was unable to feed it. Regrettably, this was the natural mother's first breeding. These animals can be seen in Enclosure 116, in an outside area of the Monkey House.

The Barbary Ape is the only species of macaque to be found outside Asia. It inhabits the rocky forests of Morocco and Algeria in north West Africa.

These animals have thick coats and can therefore exist in conditions of considerable cold. They are tailless and are ground-dwelling. In the wild they roam about the forests in large bands, where their food consists of leaves, fruit and pine cones, insects, scorpions and other small creatures. The gestation period of the Barbary Ape is about 210 days.

There is, of course, the famous colony of Barbary Apes living on the Rock of Gibraltar. These macaques were almost certainly introduced to Gibraltar by man, despite the romantic legend that the animals arrived from North Africa through an under-sea tunnel leading into the enormous network of caves inside the Rock.

### BIRD NOTES

Since our last report the following chicks have been bred in the zoo.

- 1 Yellow-browed Bulbul (*Iole icterica*)
- 1 Red-whiskered Bulbul (*Pycnonotus jocosus peguensis*)
- 1 Night Heron (*Nycticorax nycticorax*)
- 3 Bar-headed Geese (*Anser indicus*)

Bird chicks bred in zoo—*continued.*

- 3 Purplish Jays (*Cyanocorax cyanomelas*)
- 3 Jerdons Starlings (*Sturnus burmanicus*)
- 3 Spice Birds (*Munia punctulata*)
- 8 Silverbills (*Euodice malabarica cantans*)
- 4 Cut-throat Finches (*Amandina fasciata*)
- 2 Red-cheeked Cordon Bleu (*Uraeginthus bengalus*)
- 1 Tiger Finch (*Amandava amandava*)
- 1 Kookaburra (*Dacelo gigas*)
- 1 Jungle Mynah (*Aethiopsar fuscus*)

The breeding of the Yellow-browed Bulbul (*Iole icterica*) in captivity is quite unusual. In the wild these birds breed from February to May, building their nests in dense forest in small saplings or evergreen shrubs. Their nest is a shallow cup made almost entirely of green moss or fine grasses, bound with cobwebs and lined with black rootlets or fine grass. It is usually slung between two twigs in a horizontal fork in a tree. The normal clutch of these birds is two eggs, but there are sometimes three.

The distribution of the Yellow-browed Bulbul is the Western Ghats from Khandala to Travancore, and inland to the Nilgiris and Palnis, from the foot of the hills to 6,500ft. but usually at about 3,500ft. These bulbuls are also to be found in Ceylon.

The habitat of the *Iole icterica* is heavy evergreen forest on the hillsides, where it keeps mostly to the undergrowth; it can, however, be found on the edge of the forest, occasionally venturing into gardens.

Both male and female are alike in colour, the upper part of the body being bright olive and the lower part bright yellow; there is a yellow line over the eye.

\* \* \*

The distribution of the Red-whiskered Bulbul (*Pycnonotus jocosus peguensis*) is India to China, Indochina, Java and Sumatra.



*By courtesy of K. W. Green, A.R.P.S.*

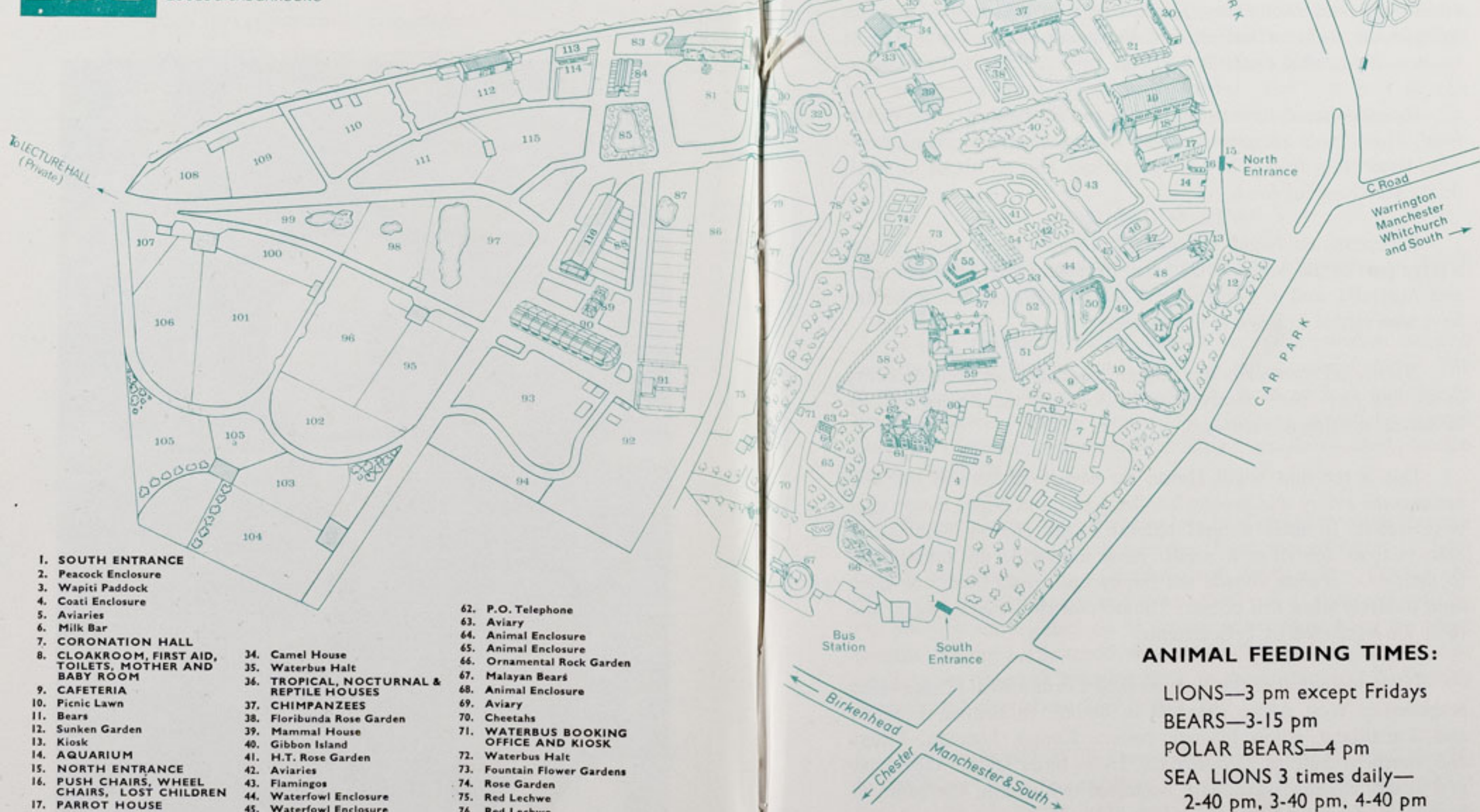
EUROPEAN OR NIGHT HERON (*Nycticorax nycticorax*) IN FLIGHT AVIARY

# CHESTER ZOO

THE NORTH OF ENGLAND  
ZOOLOGICAL SOCIETY  
ZOOLOGICAL GARDENS

FOR A COMPLETE TOUR OF THE ZOO — Follow Nos 1-116 South Entrance  
or Nos 16-116 from North Entrance then return to Nos 1-14

**Chester Zoo is Open Daily  
from 9.00 a.m. until dusk.**



## 1. SOUTH ENTRANCE

2. Peacock Enclosure
3. Wapiti Paddock
4. Coati Enclosure
5. Aviaries
6. Milk Bar
7. CORONATION HALL
8. CLOAKROOM, FIRST AID, TOILETS, MOTHER AND BABY ROOM
9. CAFETERIA
10. Picnic Lawn
11. Bears
12. Sunken Garden
13. Kiosk
14. AQUARIUM
15. NORTH ENTRANCE
16. PUSH CHAIRS, WHEEL CHAIRS, LOST CHILDREN
17. PARROT HOUSE
18. Free Flight Aviary
19. APE HOUSE
20. Picnic Lawn
21. Aviaries
22. TOILETS
23. Tuatara Exhibit
24. Peccaries
25. Waterbus Halt
26. Birds of Prey Aviaries
27. Condor Aviary
28. Jackal and Hyaena Enclosures
29. Animal Enclosure
30. Porcupine Enclosure
31. Coypus
32. Beavers
33. Giraffe House

34. Camel House
35. Waterbus Halt
36. TROPICAL, NOCTURNAL & REPTILE HOUSES
37. CHIMPANZEES
38. Floribunda Rose Garden
39. Mammal House
40. Gibbon Island
41. H.T. Rose Garden
42. Aviaries
43. Flamingos
44. Waterfowl Enclosure
45. Waterfowl Enclosure
46. Waterfowl Enclosure
47. Penguins
48. Sealions
49. Rock Garden
50. Polar Bears
51. Cat Enclosure
52. Waterfowl Enclosure
53. Anteaters
54. BIRD HOUSE
55. FOUNTAIN RESTAURANT
56. Ape Nursery
57. TOILETS
58. Lions
59. SOUVENIR SHOP
60. TOILETS
61. OAKFIELD RESTAURANT

62. P.O. Telephone
63. Aviary
64. Animal Enclosure
65. Animal Enclosure
66. Ornamental Rock Garden
67. Malayan Bears
68. Animal Enclosure
69. Aviary
70. Cheetahs
71. WATERBUS BOOKING OFFICE AND KIOSK
72. Waterbus Halt
73. Fountain Flower Gardens
74. Rose Garden
75. Red Lechwe
76. Red Lechwe
77. Deer or Antelope Enclosure
78. Waterbus Halt
79. Zebra and Deer Enclosure
80. Kamchatka Bears
81. ELEPHANTS
82. Hippos
83. Tapirs
84. Small Mammal House
85. Waterfowl Enclosure
86. Ankole Cattle
87. Emus and Cranes
88. Stork Enclosures
89. Baboon Pens
90. Cat House
91. Big Cat Enclosures

92. Antelope and Deer Paddock
93. Antelope Enclosure
94. Antelope Enclosure
95. Zebras
96. Zebras
97. Waterfowl Enclosure
98. Waterfowl Enclosure
99. Waterfowl Enclosure
100. Blackbuck
101. Wallabies
102. Animal Enclosure
103. Wallabies
104. Pere David's Deer Paddock

105. Llamas
- 105a. Llamas
106. Arabian Gazelles
107. Animal Paddock
108. Bison
109. Pere David's Deer Paddock
110. Prairie Marmots, Alpacas
111. Antelope Enclosure
112. RHINOS
113. TOILETS
114. Mpila Snack Bar
115. Antelope Enclosure
116. MONKEY HOUSE

## ANIMAL FEEDING TIMES:

LIONS—3 pm except Fridays

BEARS—3-15 pm

POLAR BEARS—4 pm

SEA LIONS 3 times daily—

2-40 pm, 3-40 pm, 4-40 pm

ANIMALS MAY BE MOVED  
FROM TIME TO TIME

We have bred these birds in the past. Their nests are made from twigs and root fibres, lined with a finer material, and are built in the forks of branches of the lower levels of trees, or in bushes. The normal clutch is 2-3 eggs.

Red-whiskered Bulbuls are lively and interesting; their call is loud. These birds are gross and extravagant eaters, enjoying over-ripe, fermenting fruit. They are gregarious and go about in small flocks searching for food.

European, or Night Herons (*Nycticorax nycticorax*) inhabit a large part of the world. They breed in central Europe in Hungary and Australia, and in Bohemia and the Netherlands. These herons have also settled in Bavaria in Germany.

*Nycticorax nycticorax* are migrant over most of their breeding areas, and have been observed as far south as the Zambesi River in Africa, drifting downstream.

This is the first Night Heron we have bred here in the Zoo because the aviary was broken into last year, and Night Heron eggs were stolen. In their natural habitat Night Herons build stock nests in trees, bushes or in reeds. These herons do not take kindly to their own species outside the family units, and there are often loud quarrels when this occurs. The normal clutch is 3-5 eggs, and these are incubated by both parents.

The distribution of the Red-cheeked Cordon Bleu (*Uraeginthus bengalus*) is West Africa, Senegal to Sudan, to Eritrea, Ethiopia and Somaliland, south through eastern Congo, Uganda, Kenya and northern half of Tanganyika. These birds favour thornbush and acacia country, savannah, neglected cultivation, the edges of forests, gardens and human habitations.

The song of these birds is a "ts, ts, tsee", which is repeated time and again. The call is a weak, queeling sound.

\* \* \*

A crested Bronzewing Pigeon (*Ocyphaps lophotes*) is on breeding

loan to us and has joined our pair which were presented by Adelaide Zoo in December 1973. The distribution of the Crested Bronzewing Pigeon is restricted to Australia, where there are four geographical races. Usually the breeding season is from October to November, but sometimes from April to September. The nest is a slender structure or platform of twigs, being slightly concave and about 5in. in diameter, and the normal clutch is two eggs.

### AQUARIUM NEWS

Several species have been added to the Aquarium, of which the following are Fresh Water Tropical Fishes.

A large number of Lesser Angel Fishes (*Pterophyllum eimekei*) have been bred. Adults are a black to brown-yellow colour. The flanks, however, have a silvery-bluish sheen with a number of black transverse bands, and some gleaming greenish-coloured blotches. There are a number of gleaming greenish-coloured blotches on the silver gill-cover also.

When courting, the males produce loud creaking noises through their jaws. The eggs of these fishes have the attention of both parents who frequently fan them with fresh water. During the process of hatching the young are chewed out of their eggshells by the parents and ejected on to leaves where they hang by short threads. Young are hatched after about 48 hours, and the parents can later be observed bringing them to the bottom-soil. Swimming is attempted after about four to five days.

The distribution of the Lesser Angel Fish is the Middle Amazon, in the River Tapajoz and other tributaries. In its natural habitat it can grow to 12cms. long and 23cms. tall, but in captivity is smaller.

A number of Piranhas (*Serrasalmus species*) have been acquired. These originate from the Amazon system and north-eastern South America. We have not had these in the Aquarium for some time. Adults grow to about 35cms. Their bodies are deep and strongly compressed, the colouration being dark grey to olive-green on the



*By courtesy of K. W. Green, A.R.P.S.*  
PIRANHA (*Serrasalmus rhombus*) ON SHOW IN THE AQUARIUM

back of the head and underparts of their bodies, the lower half being a clouded white to silvery colour. They have large, dark, irregular spots, especially on the upper parts. A shoulder-blotch of similar colour may usually be recognised. The fins are grey and the base and hinder edge blackish. The middle part is reddish.

Although adult Piranhas are suitable for aquaria they are unfortunately most unsociable, and any weaker specimens in the same tank are treated badly. These fishes eat raw meat and fish. As far as we know this species has not been bred in captivity.

Also newly acquired are some Neon Tetras (*Hyphessobrycon innesi*). These are lively and contented fishes and may be kept with other peaceful fishes of about the same size. They eat small live food of various kinds, and also some dried foods, laying their eggs amongst plants. Their young are hatched after 22-26 hours, and on about the fifth day can be seen swimming freely in the tank. Sixty to 130 young may be produced at one spawning.

Neon Tetras are a dark olive-green on the back with yellowish-white on the belly. There is a beautiful iridescent green which tapers posteriorly from the eyes. Below this is a gleaming red band commencing just before the middle of the body. The iris is a shining blue-green colour with some golden points which sparkle like brilliants.

\* \* \*

Several Crucian Carp (*Carassius carassius*) have been bred recently, and these are European Fresh Water Fishes. These are very beautiful fishes, the general adult colouration being olive-green on the uppersides and yellowish to a brilliant golden yellow on the undersides. There is an elongated transverse dark blotch at the root of the tail. In the young this is very noticeable as are the reddish-coloured dorsal and caudal fins, becoming yellowish-red as the fishes mature.

Crucian Carp are distributed through Europe with the exception of Spain, Switzerland, southern Italy and northern Finland. They grow to a length of about 20cms. but have been known to reach a

length of 75cms. Their general habitat is in quiet, turbid waters, and their food consists of small animals, and plant remains. Spawning takes place from May to June, the eggs being laid amongst water plants. In their natural habitat there can be up to 300,000 eggs. These fishes are very easy to keep in the aquarium as they are especially hardy.

### GARDENING NOTES

The summer bedding was completed by the middle of June. Usually the change takes just over three weeks, and this year the weather conditions have been more favourable to us, with a good amount of rain in the third week of June. This was a great help as we like the flower beds to regain their colourful display as quickly as possible after the spring flowers have finished. Approximately 80,000 plants have been bedded. We use a cultivator on all the beds and borders. This saves us many hours of digging, and the soil is a better tilth for planting.

One of the most attractive plants we have is the Lantana, grown in the form of standards and bush plants. This year they can be seen in a curved border at the back of the Aquarium. The Lantana is a half-hardy shrub. Many people ask if our standard plants in the flower beds stay out all the year round. Of course the answer is no, as they are all half-hardy.

Another attractive plant is the aster-like blue-flowering *Felicia amelloides*. This is a perennial, but its hardiness is limited in our area. It can be seen in a border parallel to the Sea Lion Enclosure, and at the entrance to the Monkey House.

Along the top walk in the Tropical House is an abundance of *Bougainvillea* flowers, along with a flowering climber which has the common name of Dutchman's Pipe. Also growing in a trough nearby is a shrub called *Phyllanthus roseo-pictus*, the colour of its leaves being crimson and white.

Now that the bedding plants are out, the greenhouses will not be empty for long. Tomatoes grown by "ring-culture" are given



*By courtesy of the Cheshire Observer*

PHOTOGRAPH TAKEN AT THE PRESENTATION TO MR. P. W. GALLUP

*Reading from left to right: Miss A. L. Howard, Mr. P. W. Gallup, Professor J. O. L. King, Mrs. P. W. Gallup, and Mr. G. S. Mottershead*

more room. Flowering plants grown in pots for various decorative purposes are "potted on", and given more room. July is the month in which we propogate plants for the animal houses for future use.

### RETIREMENT

Our Head Gardener, Mr. P. W. Gallup, retired in April this year after twenty-three years with the Society. Following the Annual General Meeting on the 29th May there was a presentation to Mr. Gallup, when he received a Scroll and Silver Salver from the Members.

This was a very happy occasion. The Chairman, Professor J. O. L. King, announced that the Council had elected wholeheartedly to bestow Life Membership of the Society on Mr. Gallup. We therefore hope, and indeed expect, to see him as a frequent visitor to the Zoo and at the Members' Meetings.

Mr. Gallup regrets that it is not possible to write to thank each subscriber personally, and wishes us to express, through the magazine, his warm appreciation of the Scroll and the very beautiful Silver Salver, both of which will give great pleasure to himself and his wife in their years of retirement.

### SUBSCRIPTIONS

New readers of the CHESTER ZOO NEWS who would like to receive the magazine regularly may be interested to know that subscription forms can be obtained from the souvenir shops. An annual subscription (12 issues) costs £2.24, postage paid, which can either be handed over the counter at the shops or posted with the completed form to the Director-Secretary, Chester Zoo, Chester.

The following notice is displayed on several boards in the grounds  
Please comply with it at all times

### FEEDING OF ANIMALS AND BIRDS

**IT IS AN OFFENCE** for any member of the public to offer food of any description to any Animal or Bird in Chester Zoo.

This regulation is made for the sake of the health of the Animals and Birds. Since the **NO FEEDING** rule was introduced, the number of deaths has dropped appreciably and sickness due to wrong feeding has been virtually eliminated.

What you may be offering to an animal may only be a sweet or an inoffensive piece of bread, but it can mean a death sentence for the animal. For example, a cough drop, which may relieve your cough, can cause instant death to many Animals and Birds in the Zoo.

You must not lose sight of the fact that you are only one of over a million visitors who visit the Zoo annually. If for instance an elephant had one bun from only one tenth of a day's visitors during the summer, it would eat between three and four thousand. You can guess the result.

We realise what a temptation it is for visitors, particularly children, to feed our Animals and Birds and this is why we invite members of the public to be present at the official feeding times.

This is a polite warning to you, asking you not to feed the animals. If you ignore it, the Keepers are authorised to ask you to leave the Gardens.

**If you really love Animals and Birds, you will appreciate the wisdom of the ruling — No feeding by members of the public.**

---

**PLEASE HELP US TO KEEP OUR COLLECTION OF  
ANIMALS NOT ONLY ALIVE BUT IN FIRST CLASS  
CONDITION**

Printed in England by  
W. H. Evans & Sons Ltd  
Sealand Road Trading Estate  
Chester