



By Courtesy of D. G. Godsell.

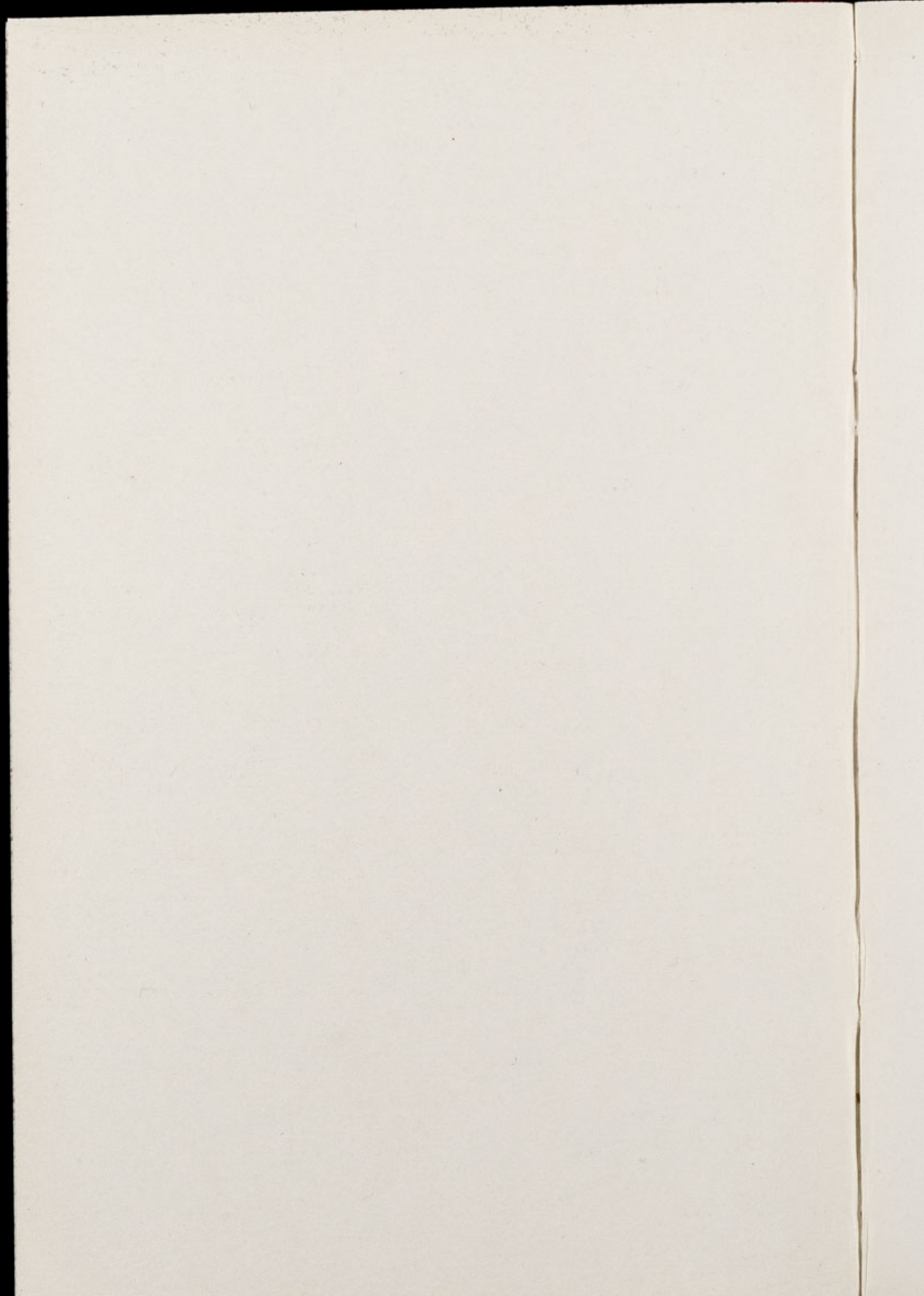
Chester Zoo News

AND GUIDE

THE NORTH OF ENGLAND ZOOLOGICAL SOCIETY
ZOOLOGICAL GARDENS, UPTON - BY - CHESTER

August 1969

Price 1/-



The North of England Zoological Society

ZOOLOGICAL GARDENS, UPTON-BY-CHESTER

COUNCIL

MISS G. M. RUSSELL-ALLEN, O.B.E. (CHAIRMAN)

HER GRACE SALLY DUCHESS OF WESTMINSTER

THE RT. HON. LORD TOLLEMACHE, M.C., D.L.

W. P. BLAND

A. C. JOHNSON

H. F. PARKER

J. N. WILSON

J. A. KILPATRICK, M.B., Ch.B., F.R.C.S.E.

A. E. SMITH

F. MOSFORD

J. O. L. KING, Ph.D., M.V.Sc., B.Sc. (AGRIC.), M.R.C.V.S.

H. D. COOPER

A. K. McGHIE

G. R. PRYOR, C.Eng., Hon.M.I.Prod.E., F.B.I.M.

E. SORBY, M.A. (OXON)

G. S. MOTTERSHEAD, M.Sc., DIRECTOR-SECRETARY

CONTENTS:

<i>page two</i>	Introductions and Recent Acquisitions.
<i>page four</i>	General News.
<i>page five</i>	Hot Weather.
<i>page six</i>	The Litter Problem.
<i>page eight/nine</i>	Zoo Plan.
<i>page ten</i>	The New Ape House.
<i>page eleven</i>	Progress Report on Nicky.
<i>page twelve</i>	Hatchings and News from the Bird Houses.
<i>page thirteen</i>	Rockhopper Penguins. Humour in the Zoo.

ILLUSTRATIONS:

<i>page three</i>	Clouded Leopard.
<i>page seven</i>	Sealions.
<i>page fourteen</i>	Rockhopper Penguins.
<i>page fifteen</i>	Rockhopper Penguins.

COVER: This month's cover shows two of our Polar Bears enjoying their Pool. For further details see page 6.

ANNUAL SUBSCRIPTION SEVENTEEN SHILLINGS POSTAGE PAID

TELEPHONE :: CHESTER 20106/7/8

INTRODUCTIONS AND RECENT ACQUISITIONS

Elaborate precautions are necessary in the Cat House when introducing breeding pairs, to ensure that the animals do not fight and injure each other. After a six month introductory period our pair of Clouded Leopards was finally housed together having first been allowed to see each other through the wire mesh of the outside enclosure. The final test came when the male was allowed into the female's outside enclosure. Fortunately the two animals appeared to be compatible and showed no signs of hostility. Clouded Leopards are notoriously difficult to introduce and as this pair seem to have settled in well it is naturally hoped that a mating will take place.

One of the most recent births in the Zoological Gardens is that of a Barbary Ape which can be found in the Ape enclosure between the Monkey House and the Cat House. The baby is gradually beginning to gain its independence by occasionally wandering around the enclosure alone but at the slightest sign of danger, it will hurry back to the security and protection of its mother. It has now been established that the youngster is a male.

Four Edible Dormice have been born recently in the Nocturnal House and are proving fascinating exhibits. These animals are a great deal larger than common Dormice and have long bushy tails. The name is derived from the fact that the Romans used to breed them especially for the table. This species is found in Southern Europe and Asia and was introduced into this country by Baron Rothschild at Tring Park during 1902.

At present in the Mammal House we have an Indian Mongoose with a very strong maternal instinct. Having recently given birth to a baby which unfortunately died, she attempted to adopt a Pygmy Mongoose already in the enclosure. At the slightest sign of danger



MALE CLOUDED LEOPARD

F. Woolham

she would grab the Pygmy Mongoose who could only struggle in a vain attempt to gain freedom, seeming to resent her attempts to mother him! Fortunately the Indian Mongoose has now ceased trying to assert her over-zealous maternal feelings on her smaller companion.

Another form of adoption was noted this month in one of the Waterfowl enclosures when a Pintail Duck deserted her eggs just as they were due to hatch and took over the task of caring for a brood of Muscovies. The female Muscovy Duck however does not appear to resent the aberrant behaviour of the Pintail; in fact she seems almost indifferent to the situation.

The young Crab-eating Macaque and the Siamang Gibbon mentioned in last month's 'Chester Zoo News' are still together, although it has been noticed that the larger Gibbon is now getting rather rough with its smaller companion, showing a tendency to develop into the more dominant of the two.

GENERAL NEWS

Our Guinea Pig enclosure in the Small Mammal House is always attractive to children, in spite of the fact that these animals are not uncommon. A great many schools keep Guinea Pigs and carry out studies of their behaviour — consequently the Zoo exhibits provide a useful comparison for further studies.

The Pachyderm House which provides accommodation for Tapirs, Elephants and Hippopotamuses is looking very attractive at the present time. The Tapir enclosure in particular is very gay and colourful with a profusion of "Plumbago capensis" trailing from the roof and also magnificent hanging baskets full of Fuchsias which lend an atmosphere to the building.

During the warm August afternoons the Elephant keepers can often be seen assisting their charges when having a bath. They seem to appreciate this to the extent of lying down or walking to command. Our Elephants are free to bathe whenever they wish but seem to enjoy the keepers' attention. In the main our Elephants are very docile; even Jumbolino, the seven year old African Elephant who can at times be boisterous, seems willing to co-operate at bath time.

A Raccoon pit at present occupied by young Coatis is a scene of great activity, the Coatis having built a large nest in an Elderberry tree within the enclosure. The keeper feels that this could be a sign of their intention to breed; previously they have only burrowed and played around in the pit but as yet the true significance of this finding is uncertain.

The Sitatunga mentioned in last month's Zoo News have now been moved to a larger enclosure previously occupied by the pair of Sarus Cranes. This enclosure with its inclusion of a pool provides conditions more conducive to their natural habitat. They are very shy creatures and seldom venture out from their indoor enclosure until the evening when there are fewer people in the Zoo.

Earlier in the year Chester Zoo had a surplus of Wapiti and in consequence it was decided to sell some of the herd. The young male Wapiti were beginning to reach maturity and this would probably have caused disturbances in the herd at a later stage.

HOT WEATHER

One question which occurred to many visitors to the Zoological Gardens during the recent spell of hot weather was how heat affected the animals. Many of the specimens in the Zoo, if in their natural habitat, would be living in temperatures far higher than those which we have been experiencing lately.

Lions seem unperturbed by the sun but even so it is noticeable that after a while they seek the shade of the trees in their enclosures.

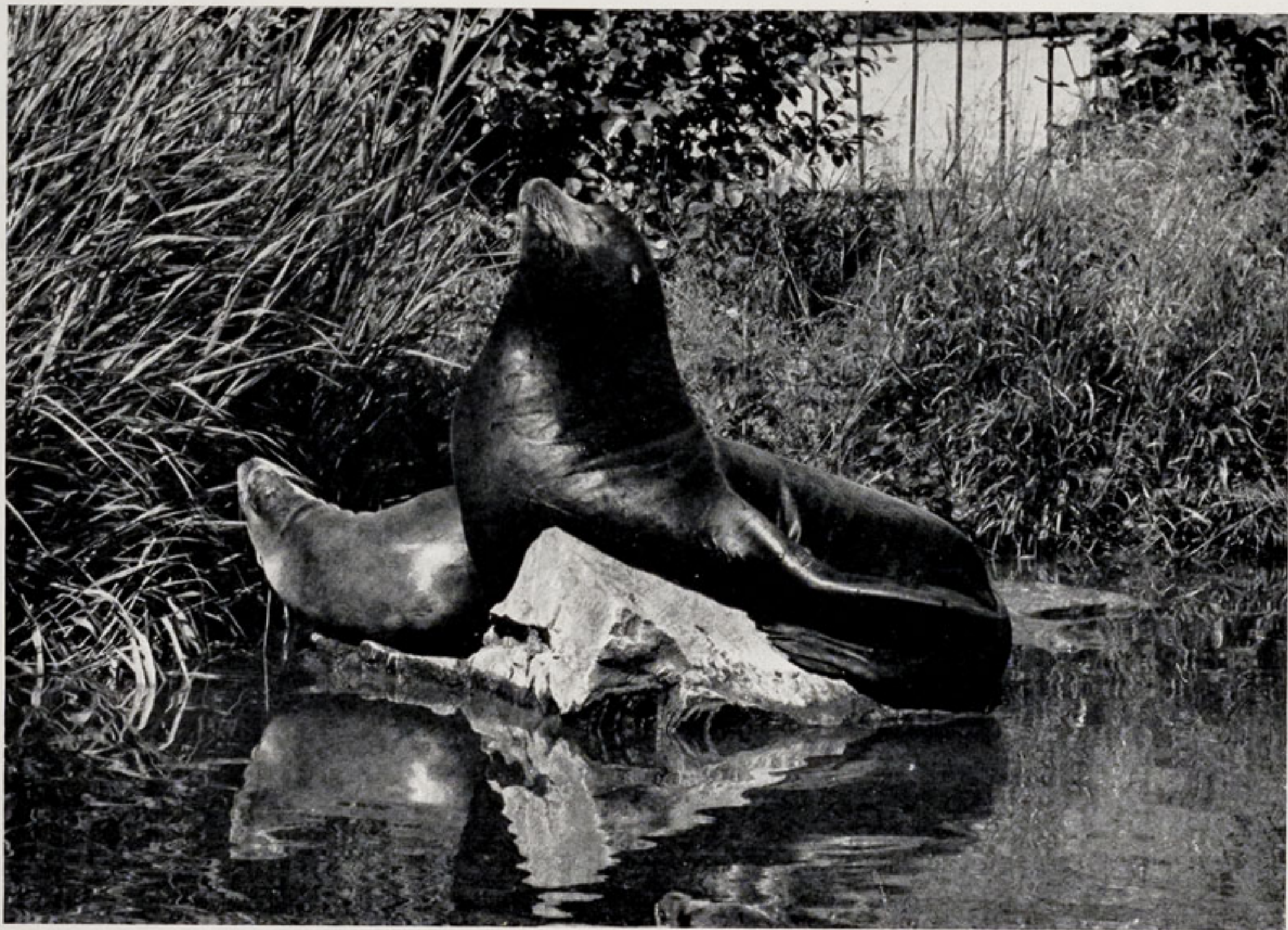
The Sealions seem to lose their appetites in hot weather, requiring far less food than usual to enable them to exist. On many occasions the keeper has to attach a label to the feeding board which states 'Not fed today' because it is obvious that they just do not want the food. It is quite a common occurrence to find all the Sealions lying on the rocks surrounding their enclosure, seemingly sunbathing. One is so used to seeing their coats looking sleek and gleaming whilst they dive in and out of the water that it is a great contrast to observe their brown fur drying in the sunshine.

Polar Bears do not create the impression that they dislike heat, which is rather amazing. Obviously they prefer cooler weather but seem quite content in the sun, their coats acting as an insulation in both extremes of heat and cold.

THE LITTER PROBLEM

Litter is always a great problem in the Zoological Gardens. No matter how many litter bins are installed, people insist on throwing pieces of polythene and paper into the enclosures which not only looks untidy but can cause great harm to the animals, sometimes resulting in death. Plastic and polythene cannot be digested by any animals but unfortunately they have been known to swallow these materials and in one instance a Bear died after eating a plastic toy.

Recently some children decided to play a game of "catch" with the Polar Bears; fortunately neither the children nor the animals were hurt but it could easily have proved to be dangerous. A sandal was dropped accidentally into the pool whereupon one of the Bears



SEALIONS ENJOYING THE SUNSHINE

K. W. Green, A.R.P.S.

GUIDE TO ZOOLOGICAL GARDENS

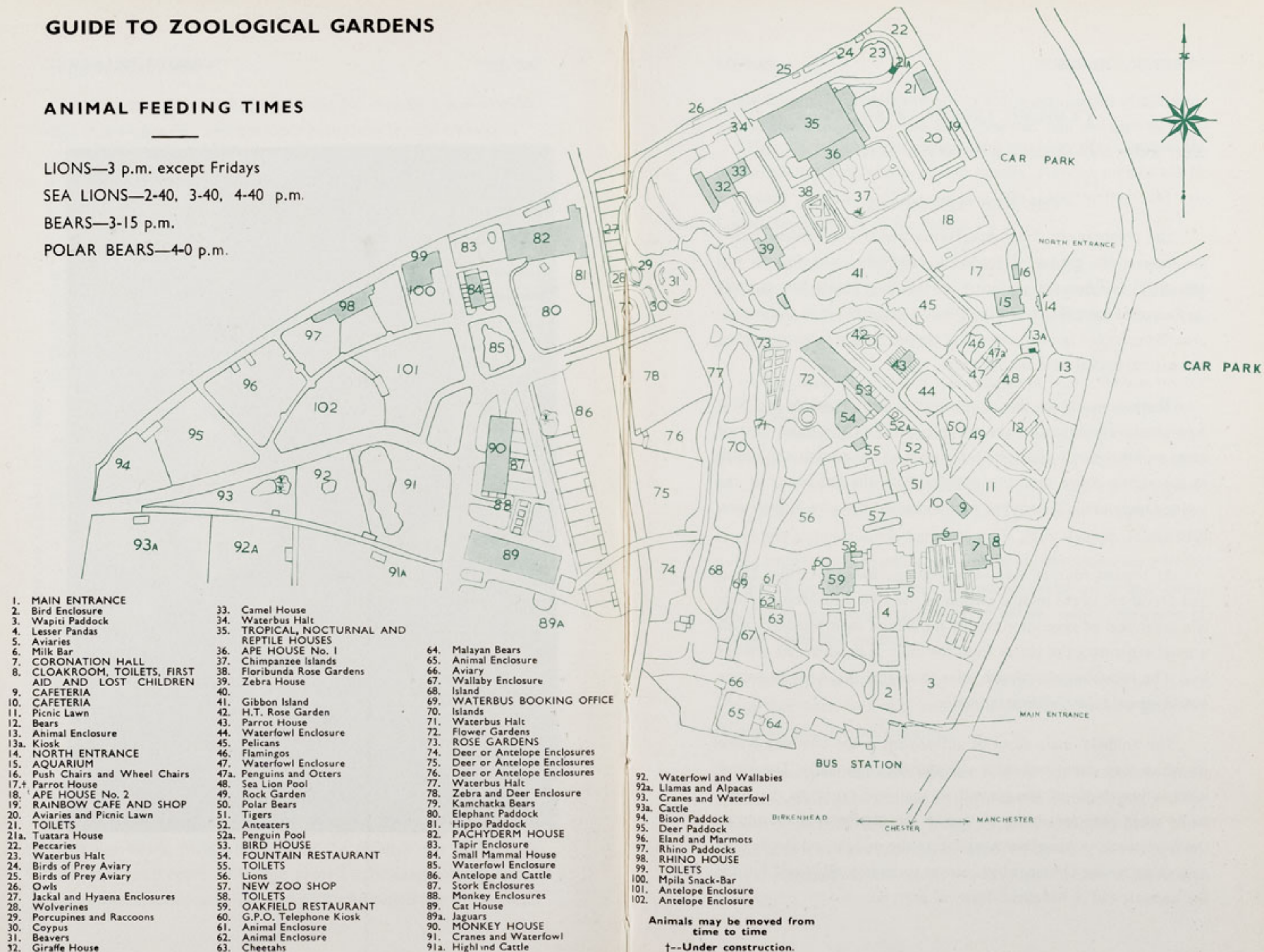
ANIMAL FEEDING TIMES

LIONS—3 p.m. except Fridays

SEA LIONS—2-40, 3-40, 4-40 p.m.

BEARS—3-15 p.m.

POLAR BEARS—4-0 p.m.



1. MAIN ENTRANCE

2. Bird Enclosure
3. Wapiti Paddock
4. Lesser Pandas
5. Aviaries
6. Milk Bar
7. CORONATION HALL
8. CLOAKROOM, TOILETS, FIRST AID AND LOST CHILDREN
9. CAFETERIA
10. CAFETERIA
11. Picnic Lawn
12. Bears
13. Animal Enclosure
- 13a. Kiosk
14. NORTH ENTRANCE
15. AQUARIUM
16. Push Chairs and Wheel Chairs
- 17.† Parrot House
18. APE HOUSE No. 2
19. RAINBOW CAFE AND SHOP
20. Aviaries and Picnic Lawn
21. TOILETS
- 21a. Tuatara House
22. Peccaries
23. Waterbus Halt
24. Birds of Prey Aviary
25. Birds of Prey Aviary
26. Owls
27. Jackal and Hyena Enclosures
28. Wolverines
29. Porcupines and Raccoons
30. Coypus
31. Beavers
32. Giraffe House

33. Camel House

34. Waterbus Halt
35. TROPICAL, NOCTURNAL AND REPTILE HOUSES
36. APE HOUSE No. 1
37. Chimpanzee Islands
38. Floribunda Rose Gardens
39. Zebra House
- 40.
41. Gibbon Island
42. H.T. Rose Garden
43. Parrot House
44. Waterfowl Enclosure
45. Pelicans
46. Flamingos
47. Waterfowl Enclosure
- 47a. Penguins and Otters
48. Sea Lion Pool
49. Rock Garden
50. Polar Bears
51. Tigers
52. Anteaters
- 52a. Penguin Pool
53. BIRD HOUSE
54. FOUNTAIN RESTAURANT
55. TOILETS
56. Lions
57. NEW ZOO SHOP
58. TOILETS
59. OAKFIELD RESTAURANT
60. G.P.O. Telephone Kiosk
61. Animal Enclosure
62. Animal Enclosure
63. Cheetahs

64. Malayan Bears

65. Animal Enclosure
66. Aviary
67. Wallaby Enclosure
68. Island
69. WATERBUS BOOKING OFFICE
70. Islands
71. Waterbus Halt
72. Flower Gardens
73. ROSE GARDENS
74. Deer or Antelope Enclosures
75. Deer or Antelope Enclosures
76. Deer or Antelope Enclosures
77. Waterbus Halt
78. Zebra and Deer Enclosure
79. Kamchatka Bears
80. Elephant Paddock
81. Hippo Paddock
82. PACHYDERM HOUSE
83. Tapir Enclosure
84. Small Mammal House
85. Waterfowl Enclosure
86. Antelope and Cattle
87. Stork Enclosures
88. Monkey Enclosures
89. Cat House
- 89a. Jaguars
90. MONKEY HOUSE
91. Cranes and Waterfowl
- 91a. Highland Cattle

92. Waterfowl and Wallabies

- 92a. Llamas and Alpacas
93. Cranes and Waterfowl
- 93a. Cattle
94. Bison Paddock
95. Deer Paddock
96. Eland and Marmots
97. Rhino Paddocks
98. RHINO HOUSE
99. TOILETS
100. Mpila Snack-Bar
101. Antelope Enclosure
102. Antelope Enclosure

Animals may be moved from time to time

†--Under construction.

immediately threw it back to a crowd of children. The result was a series of "throws and catches" until one of the more destructive Bears grabbed the sandal and ripped it to pieces.

THE NEW APE HOUSE

The plants in the New Ape House which was finished earlier this season are gradually becoming established. At first it was difficult to imagine the maturing of the tiny plants but recently they seem to have thrived in the tropical atmosphere of the enclosures. Progress has been so rapid that they provide a most interesting and natural background for the Apes.

There is no doubt that enclosures such as those in the New Ape House are an enormous progression from the usual type of cages and this surely is a great advantage to the growth and health of the young Apes. One can observe from the behaviour of the young Orang-utans how happy and contented they are in their new home.

At present four of these Orang-utans, Barry, Martha, Denis and David are in the middle section of the New Ape House. There is a great deal of vegetation on the far side of their enclosure with a moat separating the plants from the main area where the Orangs live. The moat has chamfered sides to enable the Apes to escape quickly should they fall into the water.

The animals' main form of amusement is the climbing frame on which they swing and chase one another continually. The frame itself is very high off the ground so that one can view the Apes easily when they are sitting on one of the platforms at the top of the framework. A loose bar hangs from the middle and this is used as a swing by the Orangs which proves to be not only good fun for the animals but a beneficial form of exercise.

PROGRESS REPORT ON NICKY

Nicky, the Chimpanzee being hand reared by Mrs. Timmis, the wife of the Curator, is progressing rapidly. Now six months old he is already a great deal larger than Tina and Wilson, the two Chimpanzees already in the Nursery.

The decision to hand-rear was made because of his mother's dominant maternal instinct, which is so strong that she will not allow her babies to wander from her, which prevents them from developing in the normal way.

When Mrs. Timmis first took charge of Nicky, he was treated in exactly the same way as one would care for a baby, which even entailed getting up at two hourly intervals during the night to feed him. Rich food would have been too much for his digestion and so he was given a mixture of tinned milk and water with "glucodin" as an additive. Later, to make the food more solid an egg or baby cereal was included in his bottle of milk. Mrs. Timmis found that tinned baby foods contain all the essential nutriments but are still easy for the Chimpanzee to digest, a great favourite being fruit salad. His diet now includes fruits such as grapes, apples, segments of orange, pears and bananas.

Teething was amongst the problems of rearing Nicky and it was found that when he had a sore mouth he would become generally miserable and lose his appetite.

Naturally he felt very insecure at first, but has become more and more established and has settled down extremely happily in the Timmis household. Like all young primates which are being hand reared he loves to have something which he can cling on to and carry around with him. At present his two favourite toys are a pillow and a Panda.

The Curator's children have a great influence over Nicky and it is quite a common occurrence to find them all in the garden playing "Tarzan" or "Daktari"! In fact the contact which the children have with Nicky is so great that if they leave him he cries, hoping that they will return.

The problem of where Nicky will be housed eventually, is still a matter for conjecture but he has already made several visits to the Animal Nursery and has been introduced to the other Chimpanzees.

HATCHINGS AND NEWS FROM THE BIRD HOUSES

Two species of Parrakeet recently left their nestboxes and in each case two young were bred. The species concerned were the Crimson-winged Parrakeet found in Australia and the Derbyan Parrakeet, a native of central China. This is the first time that Derbyan Parrakeets have been bred at Chester Zoo and it is several years since Crimson-wings have been reared.

One finds that wild birds fly frequently into the Zoo, join a group already on the ponds and thus make Chester their home. This has happened recently with a White-fronted Goose which joined the collection of Geese already in the Zoo.

The new Parrot House now under construction should prove to be a great incentive for future breeding. It is hoped that many species, especially those which are difficult to breed in captivity will benefit from the increased accommodation.

It has been mentioned previously that African Grey-necked Crowned Cranes are renowned for their rather unusual courtship displays. The normal pattern of behaviour is to attract each other by making raucous noises. However, recently a deviation from this

form was observed by one of the keepers, who noticed that they were displaying by blowing up their cheek wattles and making soft cooing sounds. It is the first time that this method has been seen at Chester Zoo.

ROCKHOPPER PENGUINS

Rockhopper Penguins are most fascinating birds, for not only have they charming characteristics but a most unusual appearance having what would appear to be bushy yellow eyebrows which are a startling contrast to the rest of their colouration. As their name implies, these birds spend much of their time hopping around the rockwork provided in their enclosure; an indoor viewing tank is provided which enables one to see the Penguins swimming underwater.

In the wild state these birds can be found over wide areas of the Southern Ocean and off the coast of South Africa. During the breeding period however they are to be found nesting in New Zealand, Tristan da Cunha, the Gough Islands and the Falkland Islands.

In the close-up photographs, two Rockhopper Penguins can be seen preening one another. They seem very friendly and quite tame, although a little shy of strangers. Even within the confines of their enclosure they hate to be separated, showing great signs of distress if this should happen.

HUMOUR IN THE ZOO

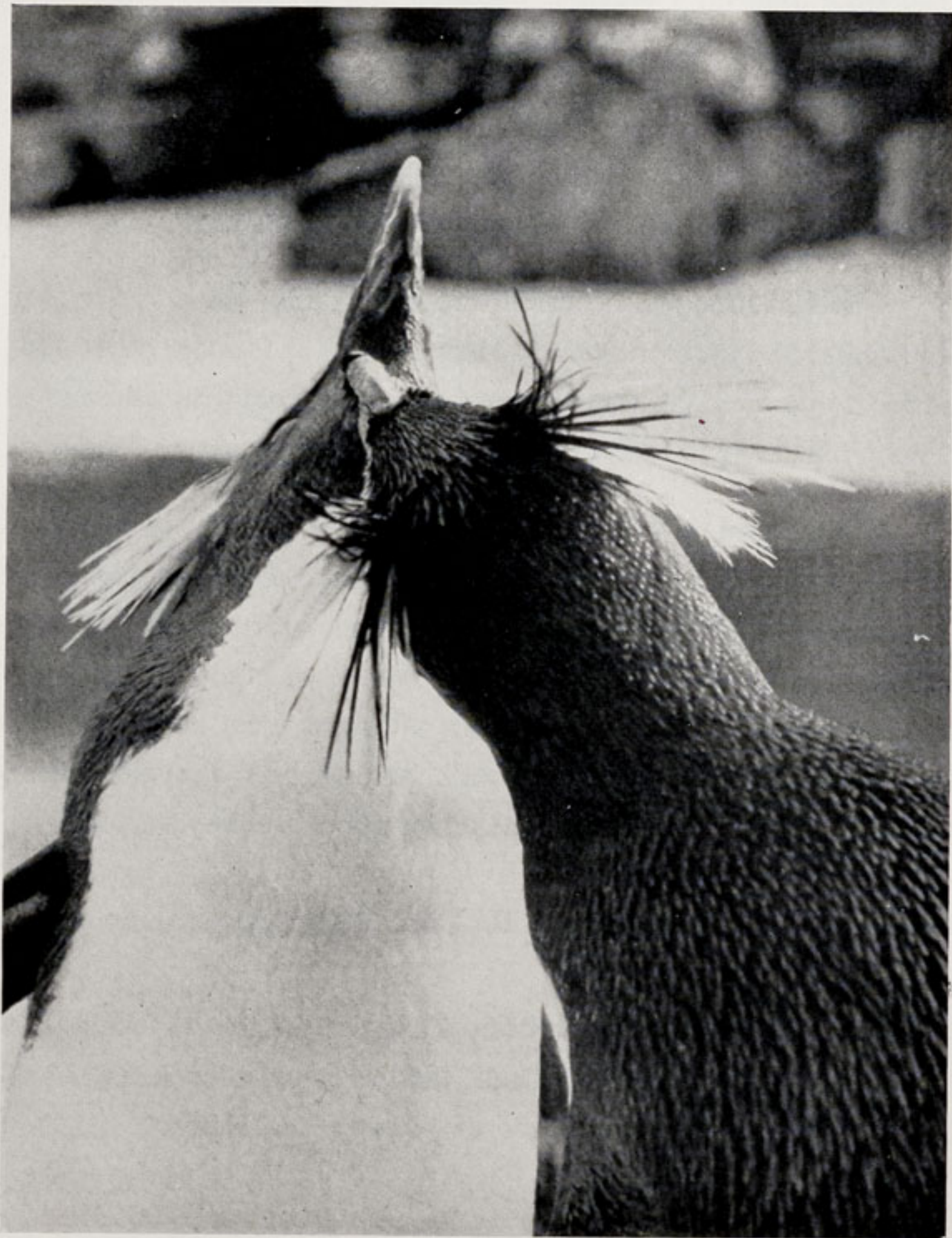
It is incredible to hear some of the anecdotes which occur during the course of the Zoo's daily routine.

Only a few days ago, a visitor tried to gain admission to the grounds by handing a very crumpled and dirty ticket to the gate



K. W. Green, A.R.P.S.

LONG YELLOW EAR-TUFTS DEMAND THE ATTENTION OF ANOTHER
ROCKHOPPER PENGUIN IF THEY ARE TO LOOK THEIR BEST



K. W. Green, A.R.P.S.

PREENING IS PART OF A ROCKHOPPER PENGUIN'S DAY

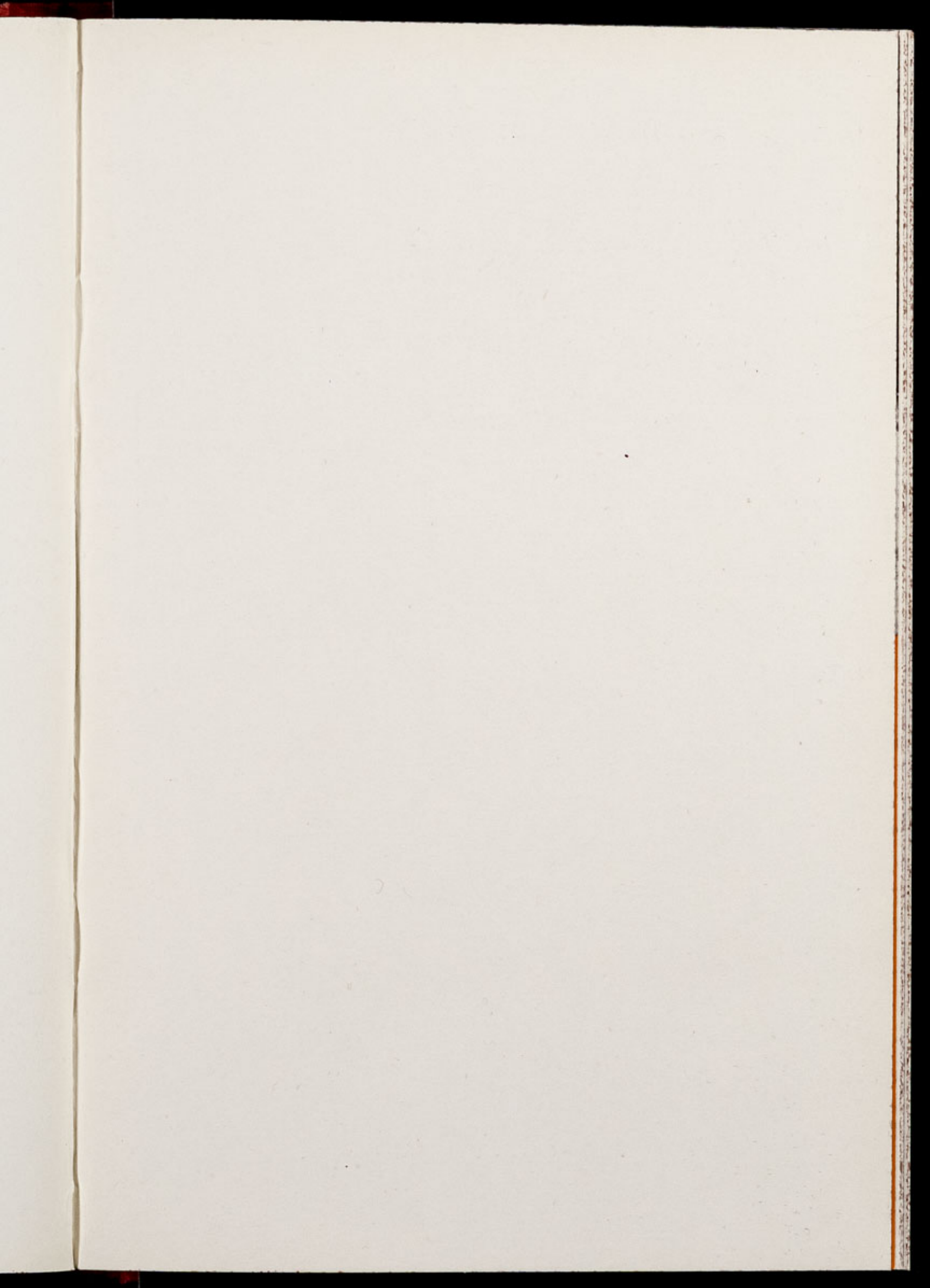
cashier. Naturally the cashier realised that the ticket in question had been used on a previous occasion and declined to accept it as valid. "But I got this ticket free with a tin of 'Kit-e-Kat!'" was the reply given by the prospective visitor.

On two occasions temporary members of the Zoo staff have completely misunderstood casual remarks which have been made.

The first time this occurred was shortly after the Director, Mr. Mottershead, had been pointed out to her as the founder of the Zoo. After some thought the woman replied in complete amazement "wasn't he lucky to find a Zoo, and with all those animals too!"

The second occasion occurred when a member of staff was asked to work a little later than she was accustomed as during the bedding out period gardeners have to work overtime and visit the canteen for meals. This person asked why it was that the gardeners were being allowed to obtain meals after the usual hours and was told that they were "bedding out". After a little thought she remarked "but I have not seen the tents, where are they sleeping?"

We would like to extend our apologies for the mis-spelling of the name of Mr. Fyfe Robertson, the television interviewer, which occurred in last month's edition of 'Chester Zoo News'.



Printed in England by
G. R. Griffith Ltd.
Castle Printing Works
Chester
