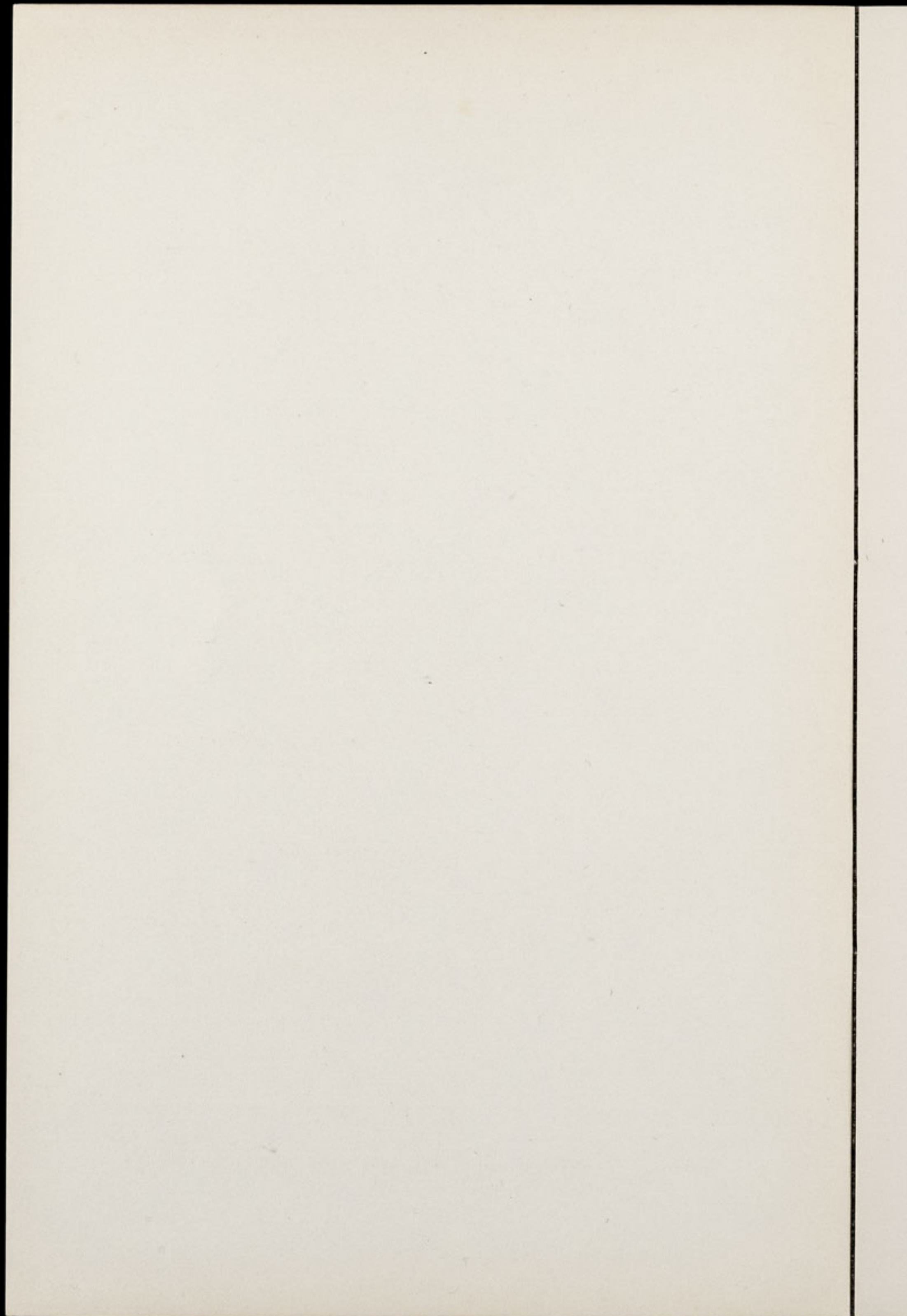




**CHESTER ZOO NEWS
AND GUIDE**

August 1974

Price 6p



The North of England Zoological Society

ZOOLOGICAL GARDENS, UPTON-BY-CHESTER

COUNCIL

PROF. J. O. L. KING, Ph.D., M.V.Sc., B.Sc.(AGRIC.), F.R.C.V.S. (Chairman)
HER GRACE SALLY DUCHESS OF WESTMINSTER
THE RT. HON. LORD TOLLEMACHE, M.C., D.L.
H. F. PARKER
J. N. WILSON
J. A. KILPATRICK, M.B., Ch.B., F.R.C.S.E.
A. E. SMITH
F. MOSFORD
H. D. COOPER, F.I.M., F.I.F.F., A.I.B.
A. K. McGHIE, A.I.B.
G. R. PRYOR, C.Eng., Hon.F.I.Prod.E., F.B.I.M.
E. SORBY, M.A.(OXON.)
A. J. BLAND, Dipl.Arch.R.I.B.A.
R. P. OWEN, A.R.I.C.S.
Mrs B. H. IRVINE

G. S. MOTTERSHEAD, O.B.E., M.Sc., DIRECTOR-SECRETARY

CONTENTS:

<i>page two</i>	Cover Photograph. Arrivals and Births.
<i>page three</i>	Bird Notes.
<i>page eight/nine</i>	Zoo Plan.
<i>page twelve</i>	Reptile News.
<i>page thirteen</i>	Subscription Forms. Birthday Presentation to the Director-Secretary.

ILLUSTRATIONS:

<i>page five</i>	Young Shelduck and Laysan Teal.
<i>page eleven</i>	Amazon Parrot chick.
<i>page fourteen</i>	Hand-embroidered Chinese picture.
<i>page fifteen</i>	Capo di Monte porcelain "Garganey Teal" and "Woodcock".
<i>page sixteen</i>	Presentation to Mr. Mottershead in the presence of Council Members and their wives.

COVER: Orang utan "Lola" and baby "Judi"; see page two.

By Courtesy of J. Walker, "Daily Mirror"

ANNUAL SUBSCRIPTION—ONE POUND AND FIFTEEN PENCE POSTAGE PAID

TELEPHONE :: CHESTER 20106/7/8

COVER PHOTOGRAPH

Clinging on for dear life to her mother's long fur is Judi, the little female Orang utan (*Pongo pygmaeus*) born at Chester Zoo in February. Though this mode of transport may seem somewhat precarious by human standards, the baby is quite safe, even when mother Lola swings about on the bars of their large climbing frame. Visitors can see Lola and Judi in one of the Ape House enclosures, No. 19 on the zoo plan.

ARRIVALS AND BIRTHS

During the past few weeks the following mammal births have been recorded:

- 2 White-bearded Gnus (*Connochaetes taurinus albojubatus*)
- 1 Blackbuck (*Antilope cervicapra*)
- 2 Fallow Deer (*Dama dama*)

Unfortunately both our female Blackbucks lost their first-born youngsters at a few days old, so the delivery this time of a sturdy fawn was welcome news indeed. The trio of Blackbuck, a male and two females, was obtained from Dublin Zoo just over a year ago and the first fawn was produced in December. It was extremely feeble and its death a week later came as no surprise to zoo staff, even though by that time the baby was being hand-reared. Maternal inexperience was largely to blame for the demise of the other female's baby which was born in February of this year. Needless to say, there were sighs of relief when it became evident that the earlier mother was rearing her second fawn successfully. The youngster may be seen in enclosure marked No. 100 on the zoo plan.

The only arrival in this section has been a female Beisa Oryx (*Oryx gazella beisa*) which was obtained from Howletts Zoo Park in a straight exchange for a male of this species. Following the death last October of our old female Beisa Oryx, we were left with just two male specimens. Howletts Zoo Park required a male and were prepared to release one of their females, so an agreement of mutual

benefit was concluded. The new female has already been introduced to the young male we retained and the two Oryx have settled down in their enclosure, No. 94.

BIRD NOTES

Since our last report the following chicks have been recorded:

- 4 Chinese Geese (*Anser cygnoides*)
- 3 Laysan Teal (*Anas platyrhynchos laysanensis*)
- 6 Bob-white Quail (*Colinus virginianus*)
- 3 Peafowl (*Pavo cristatus*)
- 2 Slaty-breasted Banded Rails (*Rallus striatus*)
- 2 Weka Rails (*Gallirallus australis greyi*)
- 2 Diamond Doves (*Geopelia cuneata*)
- 4 Nanday Conures (*Nandayus nanday*)
- 2 Quaker Parakeets (*Myiopsitta monachus*)
- 2 Amazon Parrot hybrids (*Amazona species*)
- 2 Derbyan Parakeets (*Psittacula derbyana*)
- 1 Crimson-winged Parakeet (*Aprosmictus erythropterus*)
- 5 Peach-faced Lovebirds (*Agapornis roseicollis*)
- 2 Thailand Hoopoes (*Upupa epops longirostris*)
- 1 Red-headed Laughing Thrush (*Trochalopteron erythrocephalum*)
- 2 Virginian Cardinals (*Richmondea cardinalis*)
- 5 Zebra Finches (*Taeniopygia castanotis*)
- 5 Bengalese Finches (*Lonchura striata*)
- 2 Tricolour or Black-headed Nuns (*Munia malacca*)
- 4 Cut-throat Finches (*Amadina fasciata*)
- 1 Blue-eared Glossy Starling (*Lamprotornis chalybaeus*)
- 3 Jerdon's Starlings (*Sturnus burmanicus*)
- 2 Bank Mynahs (*Acridotheres ginginianus*)
- 1 Jungle Mynah (*Aethiopsar fuscus*)
- 1 Rothschild's Mynah (*Leucopsar rothschildi*)

We are experiencing the best breeding season ever in our bird collection. Already this year we have bred fifty-two different species, ten more than our previous record total established in 1972, and it is hoped that this figure will be increased substantially before the end of the season.

The Laysan Teal, Thailand Hoopoe, Red-headed Laughing Thrush, Blue-eared Glossy Starling and Amazon Parrot are all species which have not been bred before at Chester Zoo. In addition it is very probable that the Red-headed Laughing Thrush is a first breeding in the British Isles.

For three years we had a single Laysan drake in the collection but earlier this spring the opportunity arose of acquiring two females and a further male. Thus we were able to form two pairs of this rare subspecies of Mallard. Both hens laid, producing between them a total of six eggs which were removed for artificial incubation. Half proved infertile but the other three eggs hatched successfully, two chicks emerging several days before the third.

At present one of the Laysan chicks is being reared in company with a young Shelduck (*Tadorna tadorna*) and both ducklings can be seen in the illustration on the right. The little Shelduck was just a few days old when it was discovered wandering on a local sandbank. It was brought to the zoo to be hand-reared and since its arrival has shown every indication of thriving.

The two Thailand Hoopoe chicks represent a third generation breeding in captivity. The parents of the latest youngsters were bred at Padstow Bird Gardens and the grandparents at Winged World in Morecambe. We acquired our adult pair of Thailand Hoopoes from Padstow Bird Gardens only this year but they soon settled down in one of the long planted flights adjoining the Temperate Bird House, No. 54.

In May it became evident that the Hoopoes would go to nest and subsequently they hatched an undetermined number of chicks. Unfortunately these perished at a few days old. Within a short space of time the birds recommenced displaying and it was from their second successful attempt that most of the following observations were made.

It appeared that the male bird chose the nest site, in this instance a nesting box which we had fixed in their aviary at a height of six feet from the ground. In the bottom of the box there was a layer of sawdust, on top of which we had placed damp peat. Once he had



K. W. Green, A.R.P.S.

YOUNG SHELDUCK (*Tadorna tadorna*), TOP, AND LAYSAN DUCKLING (*Anas platyrhynchos laysanensis*)

selected the nest site, the male ran about on the branches surrounding the box, raising and lowering his crest and fluttering his wings. At the same time he produced soft calls to draw the hen's attention. For three weeks she remained completely indifferent to his advances but during the fourth week she began at last to show an interest in the nesting site and on three or four occasions was seen to follow the male into the box. She stayed inside while he flew to the top of the box and commenced displaying.

As far as we could tell, the incubation period lasted for nineteen days. During that time the hen left the nest only to drink and for short intervals in the early morning and late evening. She was always fed inside the box by the male and it is probable that this passing of food is vital in establishing a strong bond between the pair.

On the morning of the nineteenth day the Curator heard squeaking noises coming from inside the box, which were likened to the cries of baby mice. Immediately he increased the quantity of live food being provided for the Hoopoes. Their diet includes mealworms, numerous insects caught in the moth trap such as craneflies, small moths and hard-backed beetles and also spiders, millipedes and centipedes collected by zoo staff. These are dusted with a high protein powder and then released into the aviary. Earthworms are also fed and these are offered to the Hoopoes in damp soil.

The male continued to feed the hen for a fortnight following the hatching but she would no longer allow him inside the nestbox. When he had picked up the food from the floor of the aviary, he would fly to the box, calling softly. She appeared, raising and lowering her crest and fluffing out her feathers in such a manner that it seemed she was trying deliberately to block the entrance hole. The male passed the food to her and she turned to feed the chicks.

The first chick left the nest on the twenty-ninth day after hatching and the second on the thirty-second day. When the young Hoopoes emerged from the nest, the colouration of their plumage was indistinguishable from that of their parents. We are able to tell them apart only because the chicks have shorter bills than the adult birds. We have examined the youngsters and believe they are a male and a

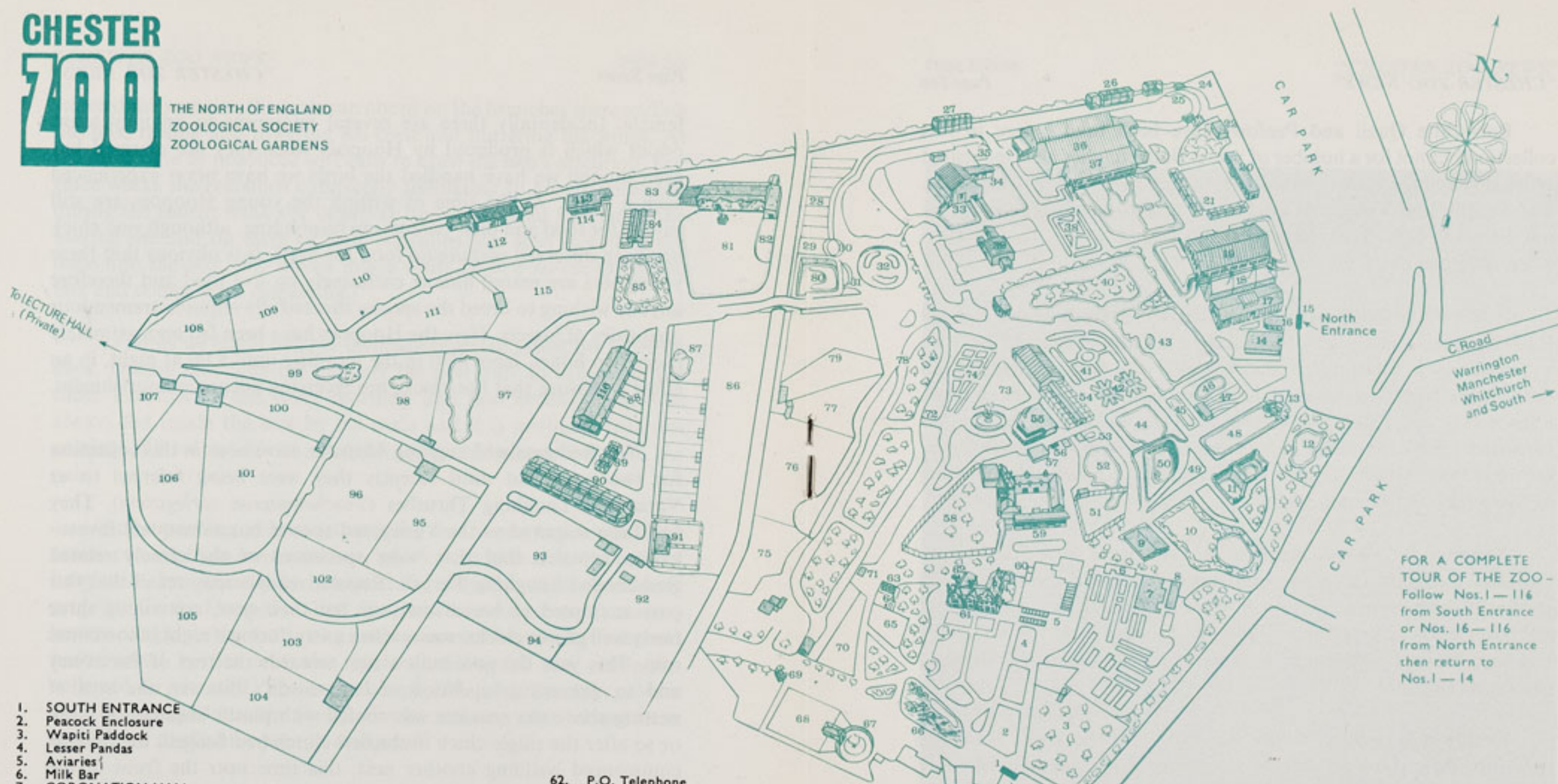
female. Incidentally there are several references to an unpleasant odour which is produced by Hoopoes when they are alarmed but even though we have handled the birds we have never experienced such a smell. At the time of writing the young Hoopoes are still calling for food and their parents are responding, although one chick has been observed picking up food for itself. It is obvious that these youngsters are reared almost exclusively on live food and therefore anyone wishing to breed the species successfully requires tremendous quantities of insects. Here the Hoopoes have been fed approximately every two hours, from 6.30 in the morning until 9.00 at night, in an effort to ensure that the chicks are receiving adequate nourishment.

The Red-headed Laughing Thrushes have been in this collection for two years but until recently they were being referred to as Variegated Laughing Thrushes (*Trochalopteron variegatum*). They had been acquired as the Variegated species but subsequent investigation revealed that they were specimens of the closely related Red-headed Laughing Thrush. Regular readers may recall that this pair attempted to breed last year but their nest, containing three fairly well grown chicks, was washed away during a night of torrential rain. This year the pair built a nest towards the rear of the aviary and to prevent a repetition of last season's disaster, the area of netting above the nest site was roofed with plastic sheeting. A week or so after the single chick in the first clutch had fledged, the parents commenced building another nest, this time near the front of the aviary, and already the hen is incubating her second clutch.

During the spring, considerable effort was made to bring our Amazon Parrots into breeding condition and subsequently nesting barrels were introduced into each of the Amazon aviaries. Two chicks left the nest but one of these has since died. The survivor seems to be progressing satisfactorily and is shown in the photograph on page eleven. When the chicks emerged from the nest they were fully feathered and initially we thought they were true Blue-fronted Amazon Parrots. However a close examination of their plumage colouration revealed that they were hybrids and we believe the parents to be a Blue-fronted specimen and either a Mealy or a Festive Amazon Parrot. In any event we are delighted with this breeding, the first of Amazon Parrots at Chester Zoo.

CHESTER ZOO

THE NORTH OF ENGLAND
ZOOLOGICAL SOCIETY
ZOOLOGICAL GARDENS



- 1. SOUTH ENTRANCE
- 2. Peacock Enclosure
- 3. Wapiti Paddock
- 4. Lesser Pandas
- 5. Aviaries
- 6. Milk Bar
- 7. CORONATION HALL
- 8. CLOAKROOM, FIRST AID, TOILETS, MOTHER AND BABY ROOM
- 9. CAFETERIA
- 10. Picnic Lawn
- 11. Bears
- 12. Sunken Garden
- 13. Kiosk
- 14. AQUARIUM
- 15. NORTH ENTRANCE
- 16. PUSH CHAIRS, WHEEL CHAIRS, LOST CHILDREN
- 17. Parrot House
- 18. Free Flight Aviary
- 19. APE HOUSE
- 20. RAINBOW CAFE AND SHOP
- 21. Aviaries and Picnic Lawn
- 22. TOILETS
- 23. Tuatara Exhibit
- 24. Peccaries
- 25. Waterbus Halt
- 26. Birds of Prey Aviaries
- 27. Condor Aviary
- 28. Jackal and Hyaena Enclosures
- 29. Animal Enclosure
- 30. Porcupine Enclosure
- 31. Coypus
- 32. Beavers
- 33. Giraffe House

- 34. Camel House
- 35. Waterbus Halt
- 36. TROPICAL, NOCTURNAL AND REPTILE HOUSES
- 37. CHIMPANZEES
- 38. Floribunda Rose Garden
- 39. Mammal House
- 40. Gibbon Island
- 41. H.T. Rose Garden
- 42. Aviaries
- 43. Flamingos
- 44. Waterfowl Enclosure
- 45. Waterfowl Enclosure
- 46. Gazelles
- 47. Penguins
- 48. Sealions
- 49. Rock Garden
- 50. Polar Bears
- 51. Tigers
- 52. Waterfowl Enclosure
- 53. Anteaters
- 54. BIRD HOUSE
- 55. FOUNTAIN RESTAURANT
- 56. Ape Nursery
- 57. TOILETS
- 58. Lions
- 59. SOUVENIR SHOP
- 60. TOILETS
- 61. OAKFIELD RESTAURANT

- 62. P.O. Telephone
- 63. Gibbon Pen
- 64. Animal Enclosure
- 65. Cheetahs
- 66. Ornamental Rock Garden
- 67. Malayan Bears
- 68. Animal Enclosure
- 69. Aviary
- 70. Wallabies
- 71. WATERBUS BOOKING OFFICE AND KIOSK
- 72. Waterbus Halt
- 73. Fountain Flower Gardens
- 74. Rose Garden
- 75. Red Lechwe
- 76. Red Lechwe
- 77. Deer or Antelope Enclosure
- 78. Waterbus Halt
- 79. Zebra and Deer Enclosure
- 80. Kamchacka Bears
- 81. ELEPHANTS
- 82. Hippos
- 83. Tapirs
- 84. Small Mammal House
- 85. Waterfowl Enclosure
- 86. Ankole Cattle
- 87. Emus and Cranes
- 88. Stork Enclosures
- 89. Baboon Pens
- 90. Cat House
- 91. Lions and Tigers

- 92. Antelope and Ostrich
- 93. Antelope Enclosure
- 94. Antelope Enclosure
- 95. Zebras
- 96. Llamas
- 97. Waterfowl Enclosure
- 98. Wallabies and Waterfowl
- 99. Waterfowl Enclosure
- 100. Blackbuck
- 101. Wallabies
- 102. Animal Paddock
- 103. Animal Paddock
- 104. Animal Paddock

- 105. Proposed New Bear Enclosures
- 106. Arabian Gazelles
- 107. Animal Paddock
- 108. Bison
- 109. Pere David's Deer Paddock
- 110. Prairie Marmots, Alpacas
- 111. Antelope Enclosure
- 112. RHINOS
- 113. TOILETS
- 114. Mpila Snack Bar
- 115. Antelope Enclosure
- 116. MONKEY HOUSE

ANIMAL FEEDING TIMES:

- LIONS—3 pm except Fridays
- BEARS—3-15 pm
- POLAR BEARS—4 pm
- SEA LIONS 3 times daily—
2-40 pm, 3-40 pm, 4-40 pm

Animals may be moved from time to time.

Bob-white Quail and Peafowl have been bred before in this collection but not for a number of years. Both clutches were incubated artificially and there are more eggs from each species near to hatching. The Peach-faced Lovebirds also make a welcome reappearance in our breeding lists. They last produced young at the zoo in 1966 when only one chick was reared.

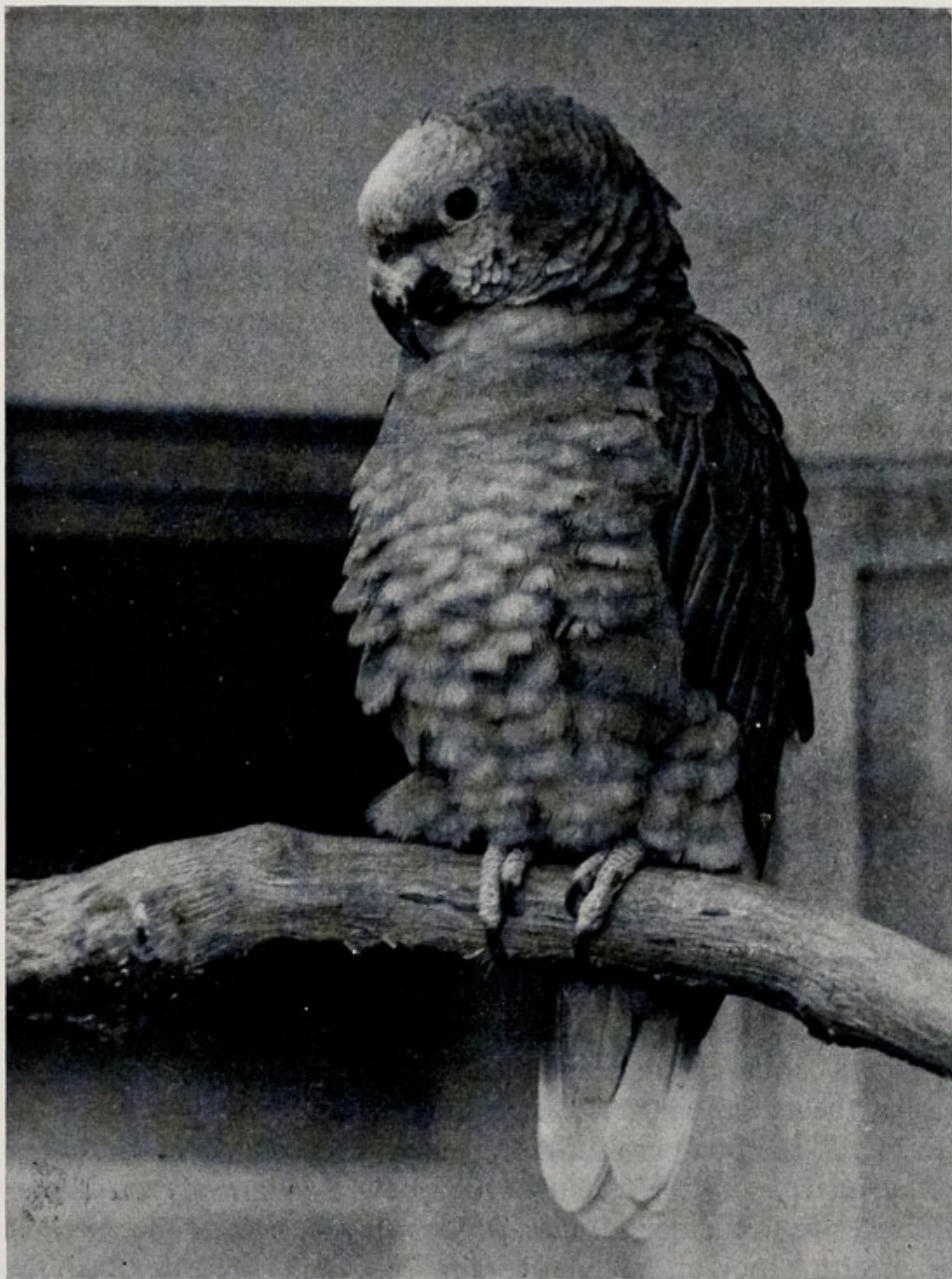
It is very pleasing to discover that the Slaty-breasted Banded Rails have produced young for a second successive year. In 1973 we achieved a first breeding of this species in the British Isles and all four chicks from last year's clutch have reached maturity. In fact, a few weeks ago a pair of these young Rails laid eggs. We were not surprised when they made no attempt to incubate this clutch but it is hoped that in 1975 we may witness a second generation breeding of Slaty-breasted Banded Rails.

Amongst the species breeding regularly here, it is good to see that the Derbyan and Crimson-winged Parakeets continue to be successful, although we were a little disappointed that only one of the latter birds emerged from the nest. Judging from the noises we had been hearing, we felt sure there were at least two Crimson-winged chicks in the clutch.

Finally it is perhaps worth recording that the Weka Rails are now into their third generation at Chester Zoo. Our first breeding of the North Island race of this New Zealand bird occurred in August 1971.

This month's acquisitions included six Red Jungle Fowl eggs (*Gallus gallus*) which were placed in an incubator as quickly as possible. Only one egg failed to hatch and at the time of writing five chicks are being reared by keepers in one of the inner aviaries adjoining the Temperate Bird House, No. 54.

Other additions were a pair each of Cape Doves (*Oena capensis capensis*), Laughing Doves (*Streptopelia senegalensis*) and the domesticated Barbary Doves and three Chinese Turtle Doves (*Streptopelia chinensis chinensis*).



K. W. Green, A.R.P.S.

AMAZON PARROT CHICK (*Amazona species*)

REPTILE NEWS

In previous years the highest number of eggs laid by our Leopard Geckos (*Eublepharis macularis*) has been four. So far this season we have retrieved eleven from their enclosure and no doubt the reason for the increase is that some of the offspring from the earlier clutches have reached maturity and are breeding themselves. The Curator of Reptiles removed the eggs from the vivarium as soon as he located them and they were placed in a bed of sphagnum moss. We have found that incubation lasts from seven to eight weeks and at the time of writing the first clutch to be removed is within two weeks of its hatching date. We are hoping that the eggs will be fertile.

At present eight hybrid Ratsnake eggs (*Elaphe obsoleta* spp.) are also near to hatching. Four baby hybrid snakes from an earlier clutch have already emerged from their shells and these youngsters represent a second generation breeding. The parents of yet another clutch, in which all six eggs hatched, were a second generation hybrid snake (*Elaphe obsoleta* spp.) and a true Chickensnake or as it is sometimes known, Yellow Ratsnake (*Elaphe obsoleta quadrivittata*). A Chickensnake was one of the original pair from which all the hybrid Ratsnakes at Chester Zoo are descended.

Two of the recent arrivals in this section, a Brazilian Rainbow Boa (*Epicrates cenchris*) and a Yellow Anaconda (*Eunectes notaeus*), will not be placed on exhibition until nearer the end of the year. Both are young specimens and consequently for several months yet they will require extra attention which can be administered more easily "behind the scenes". For those visitors curious to see a Brazilian Rainbow Boa, there is another specimen of this very colourful race of the common Rainbow Boa already on show. However Anaconda enthusiasts will have to be content for the time being with a look at the larger and more common species (*Eunectes murinus*). The single specimen on display has now reached a length of fifteen feet and during the coming winter the Curator of Reptiles plans to redesign the Anaconda's vivarium to incorporate a larger pool. The smaller Yellow Anaconda is unlikely to exceed twelve feet when fully grown.

A young male Puff Adder (*Bitis arietans*) and two Corn Snakes (*Elaphe guttata guttata*) have also been acquired since our last report. The Puff Adder has been introduced into a vivarium where there is another young male and an older female of this species, while the Corn Snakes have been allotted a vivarium to themselves. The range of the Corn Snake is in the south eastern United States and adult specimens of this non-venomous snake reach between four and five feet. Its body is a very attractive light reddish orange with paler sides and it is an oviparous species, females laying between twelve and twenty-four eggs at a time. The diet of the Corn Snake is reported to include small mammals, bats, young birds and insects.

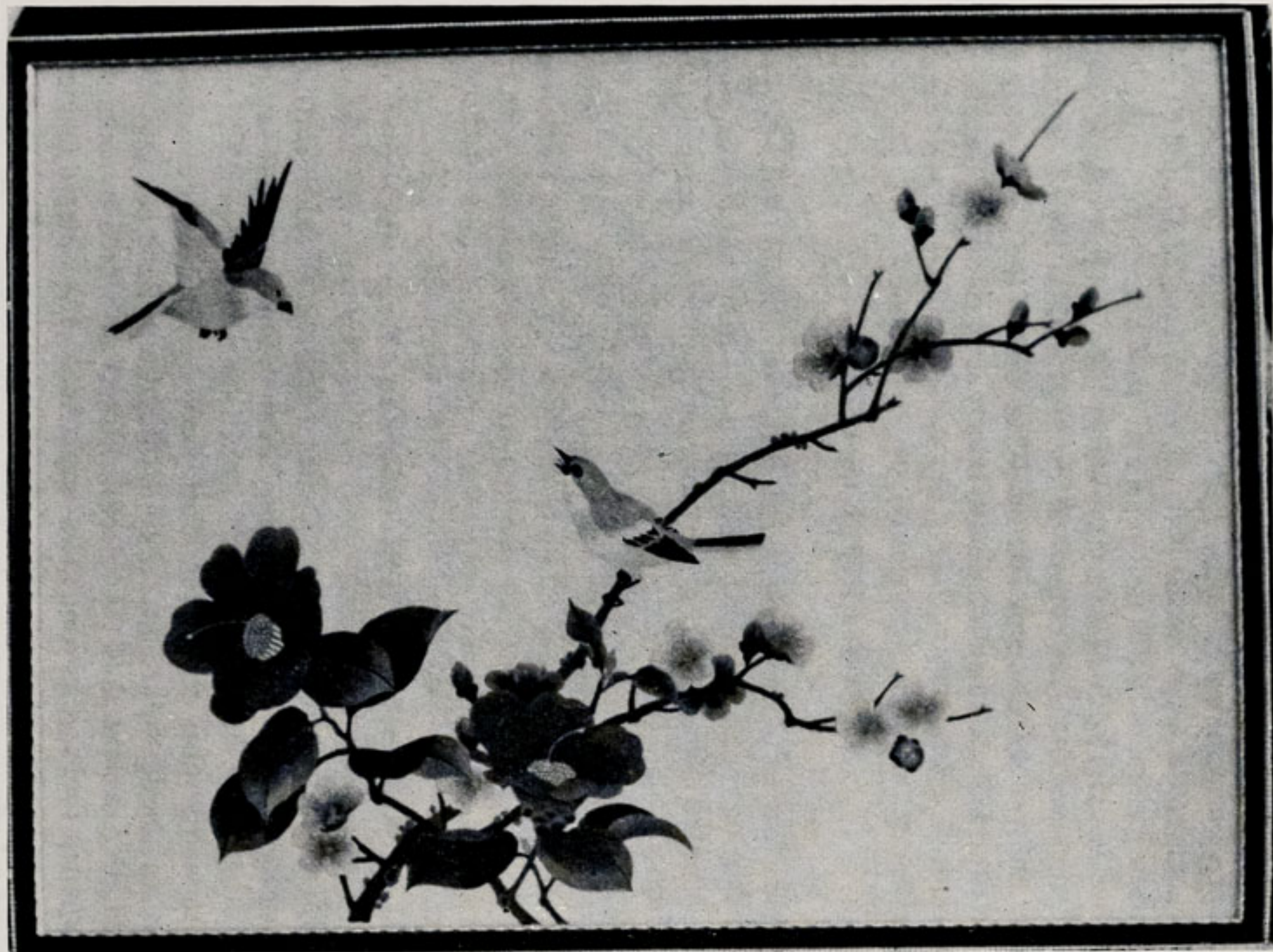
SUBSCRIPTION FORMS

New readers of the CHESTER ZOO NEWS who would like to receive the magazine regularly may be interested to know that subscription forms can be obtained from the souvenir shops. An annual subscription (12 issues) costs £1.15, postage paid, which can either be handed over the counter at the shop or posted with the completed form to the Director-Secretary, Chester Zoo, Chester.

BIRTHDAY PRESENTATION TO DIRECTOR-SECRETARY

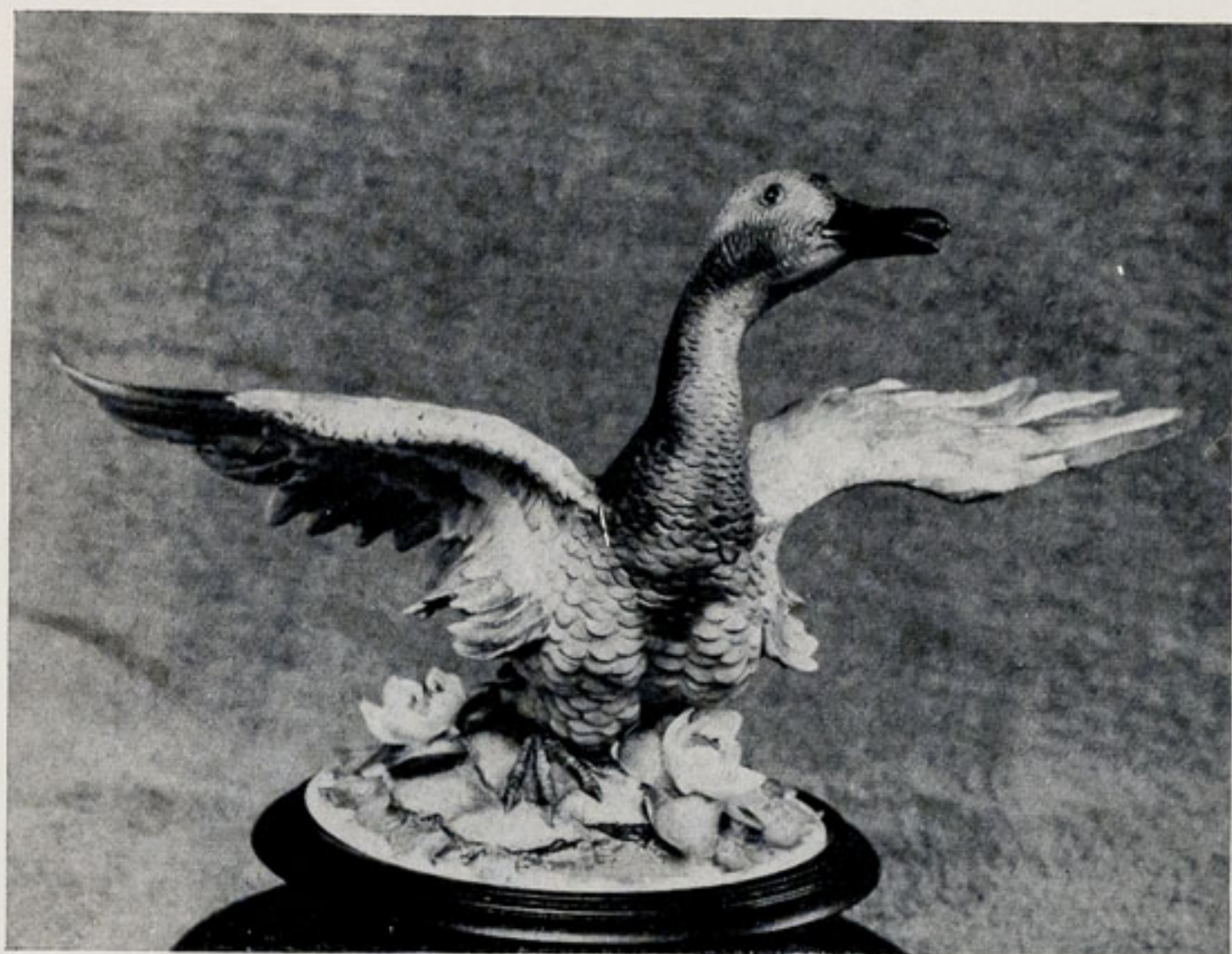
Mr. G. S. Mottershead, the Director-Secretary of the North of England Zoological Society, celebrated his Eightieth birthday on 12th June last. The Zoo Council arranged a dinner party in his honour at the Grosvenor Arms, Aldford, during which a presentation was made to him on behalf of Members of the Society. The presentation consisted of two pieces of Capo di Monte porcelain—a Garganey Teal and a Woodcock—and a hand-embroidered Chinese picture.

Following the many requests from Members, on the next three pages we are pleased to be able to publish illustrations of all these items and also a photograph of the actual presentation in the presence of Council Members and their wives.

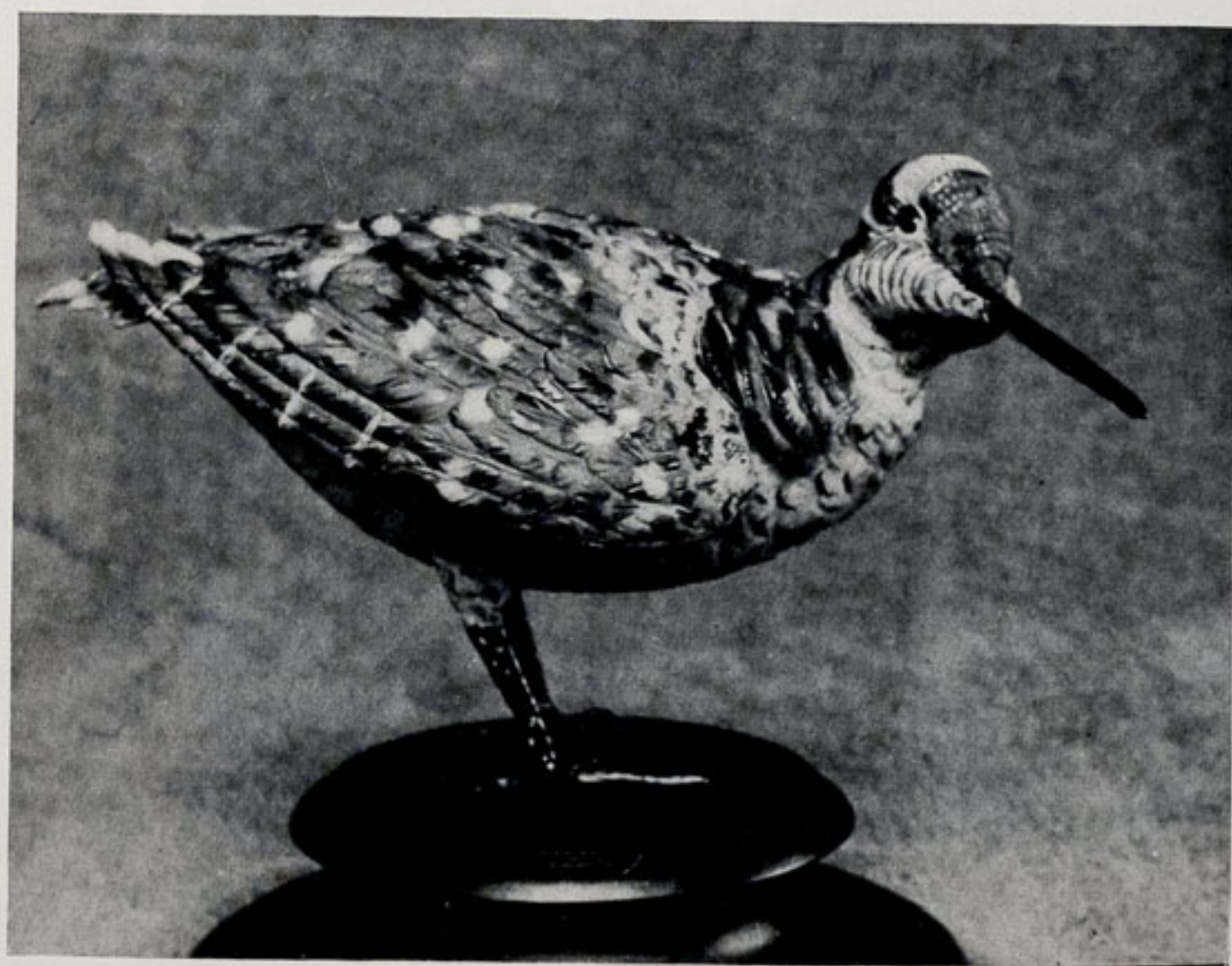


K. W. Green, A.R.P.S.

HAND-EMBROIDERED CHINESE PICTURE



K. W. Green, A.R.P.S.
CAPO DI MONTE PORCELAIN "GARGANEY TEAL"



K. W. Green, A.R.P.S.
CAPO DI MONTE PORCELAIN "WOODCOCK"



Cheshire Observer

PRESENTATION TO MR. MOTTERSHEAD IN THE PRESENCE OF COUNCIL MEMBERS AND THEIR WIVES

From left to right: (seated) Mrs. J. Williams, Her Grace Sally, Duchess of Westminster, Mrs. H. F. Parker, Mrs. H. M. King.

(standing) Mr. A. E. Smith, Mrs. E. A. Wilson, Mr. J. N. Wilson, Mr. H. D. Cooper, Mr. G. R. Pryor, Mrs. H. D. Cooper, Mr. J. A. Kilpatrick, Mr. F. Mosford, Mrs. F. Mosford, Mrs. M. Owen, Mr. G. S. Mottershead (Director-Secretary), Mr. R. P. Owen, Miss A. L. Howard, Mr. G. F. Williams, Mrs. J. A. Kilpatrick, Prof. J. O. L. King (Chairman), Mr. E. Sorby, Lady Tollemache, Mrs. B. H. Irvine, Mr. H. F. Parker, The Rt. Hon. Lord Tollemache, Mrs. D. M. Sorby, Mr. C. H. Irvine, Mrs. A. J. Bland, Mr. A. J. Bland.

The following notice is displayed on several boards in the grounds

Please comply with it at all times.

FEEDING OF ANIMALS AND BIRDS

IT IS AN OFFENCE for any member of the public to offer food of any description to any Animal or Bird in Chester Zoo.

This regulation is made for the sake of the health of the Animals and Birds. Since the NO FEEDING rule was introduced, the number of deaths has dropped appreciably and sickness, due to wrong feeding has been virtually eliminated.

What you may be offering to an animal may only be a sweet or an inoffensive piece of bread, but it can mean a death sentence for the animal. For example, a cough drop, which may relieve your cough, can cause instant death to many Animals and Birds in the Zoo.

You must not lose sight of the fact that you are only one of over a million visitors who visit the Zoo annually. If for instance an elephant had one bun from only one tenth of a day's visitors during the summer, it would eat between three and four thousand. You can guess the result.

We realise what a temptation it is for visitors, particularly children, to feed our Animals and Birds and this is why we invite members of the public to be present at the official feeding times.

This is a polite warning to you, asking you not to feed the animals. If you ignore it, the Keepers are authorised to ask you to leave the Gardens.

If you really love Animals and Birds, you will appreciate the wisdom of the ruling — No Feeding by members of the public.

PLEASE HELP US TO KEEP OUR COLLECTION OF ANIMALS NOT ONLY ALIVE BUT IN FIRST CLASS CONDITION.

