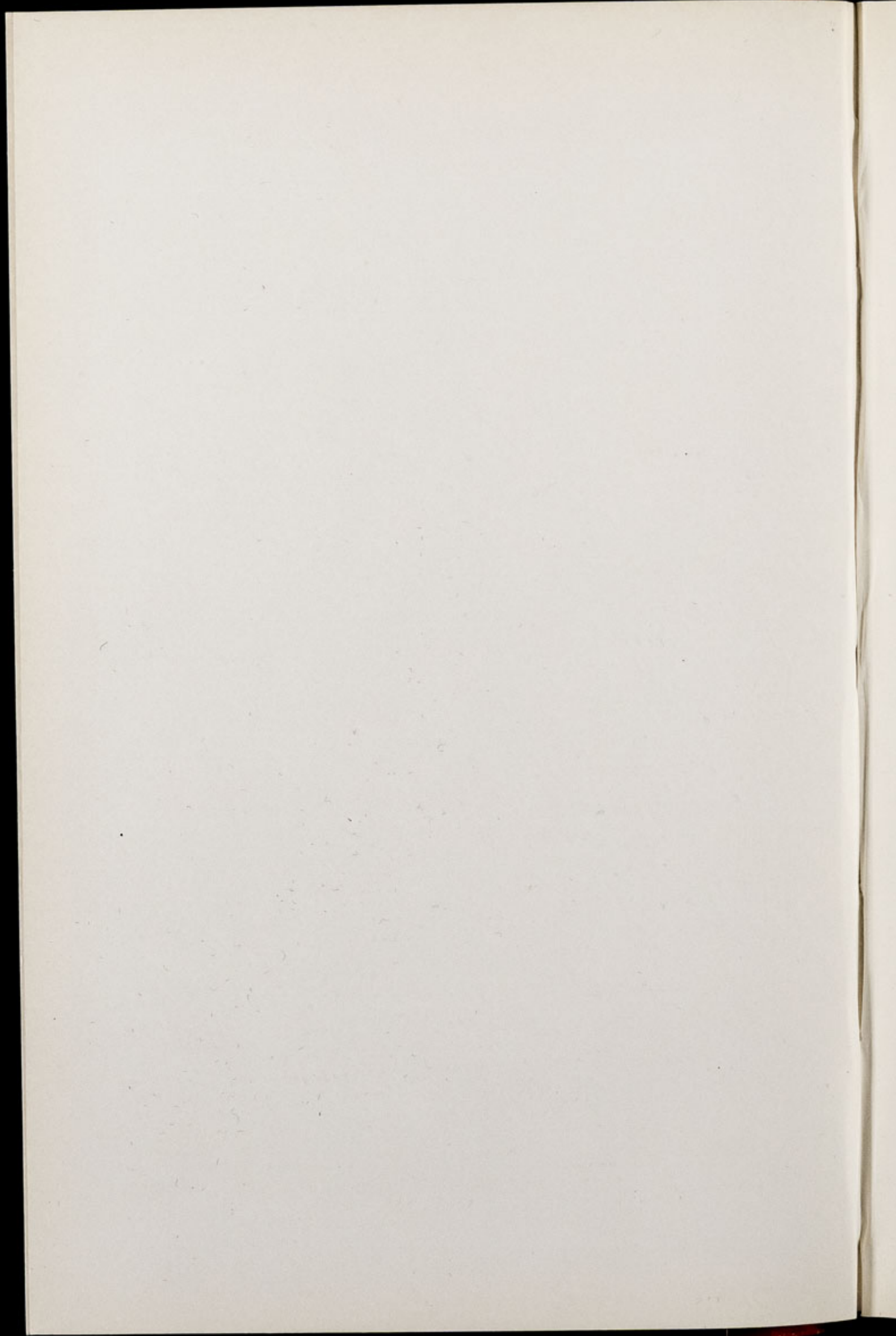


CHESTER ZOO NEWS

AND GUIDE

May 1978

Price 12p



The North of England Zoological Society

ZOOLOGICAL GARDENS, UPTON-BY-CHESTER

COUNCIL

PROF. J. O. L. KING, Ph.D., M.V.Sc., B.Sc.(Agric.), F.R.C.V.S., F.I.Biol.
HER GRACE SALLY DUCHESS OF WESTMINSTER (Chairman)
J. N. WILSON
J. A. KILPATRICK, M.B., Ch.B., F.R.C.S.E.
F. MOSFORD
H. D. COOPER, F.I.M., F.I.F.F. Cert., A.I.B.
G. R. PRYOR, C.Eng., Hon.F.I.Prod.E., F.B.I.M.
A. J. BLAND, Dipl.Arch.R.I.B.A.
R. P. OWEN, A.R.I.C.S.
MRS. B. H. IRVINE
F. S. CARSON, M.C., B.A.(Cantab.)
DR. J. E. D. CHARLES-JONES, M.B., BS., M.R.C.G.P.
DINAH, LADY TOLLEMACHE
W. KELSALL, O.B.E., Q.P.M.
DR. J. R. BAKER, Ph.D., B.Sc., M.R.C.V.S.

CONTENTS

<i>page two</i>	Tribute to Mr. G. S. Mottershead
<i>page five</i>	Lion-tailed Macaques
<i>page seven</i>	"Jubilee's" Birthday Party
<i>page ten</i>	Bird Notes
<i>pages eight/nine</i>	Zoo Plan
<i>page eleven</i>	Aquarium News
<i>page fifteen</i>	Gardening Notes
<i>page sixteen</i>	Subscriptions

ILLUSTRATIONS

<i>page six</i>	"Flo" with her baby "Dillon"
<i>page ten</i>	"Jubilee" on his first anniversary
<i>page fourteen</i>	Discus in the Aquarium

COVER

George Saul Mottershead, O.B.E., M.Sc.,
Director-Secretary 1934-1978

Photo by courtesy of Jack Smith

Annual subscription — Two Pounds and Thirty Pence, postage paid
Telephone Chester 20106/7/9

TRIBUTE TO MR. G. S. MOTTERSHEAD

We very much regret to announce that George Saul Mottershead O.B.E., M.Sc., our Director-Secretary, founder of Chester Zoo and a pioneer of zoos without bars, died at his home on Friday, 5th May, 1978. He was 83 years of age.

Mr. Mottershead suffered a slight stroke in the early part of the year and it was thought that he was making good progress. Even in his illness he was to be seen around the Zoo, keeping in touch and taking a keen interest as always. Unfortunately he suffered a relapse a few days prior to his death.

In 1964 Manchester University conferred on Mr. Mottershead an honorary degree of Master of Science, and in the 1973 New Year's Honours List he was awarded the O.B.E.

He leaves two daughters, Mrs. June Williams, Curator of the Aquarium at Chester Zoo, and Mrs. Muriel McCann of New Zealand. There are four grandchildren.

Mr. Mottershead was a great character and will be missed by all at the Zoo and in zoos around the world. From 1961 to 1963 inclusive he was President of the International Union of Zoo Directors. He travelled widely and Zoo Directors from many parts of the world were amongst his friends.

We feel that in the *Chester Zoo News* we would like to record some of the early struggles of Mr. Mottershead and his family in trying to establish a Zoo in Chester. With his wife, Elizabeth, they founded the Zoo 47 years ago. In his childhood he first became interested in mammals when he rescued lizards and snakes that emerged from boxes of exotic blooms delivered to his father, a Cheshire nurseryman. From then on he cherished a dream of creating a zoo. When his dream materialised it was to be a zoo without bars. During the first World War, in the Battle of the Somme, a German bullet paralysed him but to the amazement of doctors he overcame his paralysis by a strictly self-imposed routine of exercises. Following his recovery Mr. Mottershead built a small nursery and

gathered together a private collection of birds and mammals. From this small beginning he went on to buy "Oakfield," a beautiful large red-bricked house, together with nine acres of gardens at Upton-by-Chester. Little did he know that nine acres would in the future expand to over five hundred acres. All the capital Mr. Mottershead possessed went into buying "Oakfield." His intention to develop a zoo met with a great deal of local opposition, and early in 1931 a Public Enquiry was held at Chester Town Hall to determine whether he should be allowed to continue. As a result of the Enquiry the Ministry of Health decided in favour of the Zoo.

After the enquiry was over the family, George Mottershead, his wife Elizabeth and his two daughters, Muriel and June, worked long hours to make the Zoo a success but there were few visitors at first.

In 1934 the Zoo ran into financial difficulties and Mr. Mottershead had the idea of registering the business as a non-profit making company to be run as a charitable educational institution. It then became known as The North of England Zoological Society. This decision was approved by many local dignitaries and in 1937, only seven years after the commencement of the present site of the Zoo the late Lord Leverhulme laid the foundation stone to the first lion paddock without bars in the country. In 1941, when Mr. Mottershead managed to acquire his first elephant, he insisted on the freedom that he felt all animals should have, and refused to have it shackled as other zoos had done in the past.

In 1942 the Society made its first profit of the small amount of £467. Two years later the Society received a legacy of £18,000 which started Chester Zoo on the road to success. The legacy was kindly bequeathed by Miss Catherine Jane Tompkyns-Grafton, an animal lover from the Lake District who during the War had "adopted" Punch, the Polar Bear and paid £1.00 each week towards the cost of its food. There is a plaque in the Zoo commemorating her generosity. More and more land was purchased over the years so that the animals could have additional freedom. The Big Cats were given enclosures so that they could roam about, and the apes were put on moated islands where they could run freely.

Owing to his early training in horticulture Mr. Mottershead

took a great interest in the gardens and these are now famous for their beauty and extensive layout. He had the foresight to engage Mr. P. W. Gallup who had served his apprenticeship at Sandringham.

From 1950 onwards new mammal houses and bird enclosures were gradually built and the visitors were eventually catered for at Snack Bars scattered over the Zoo grounds. There now exist the Fountain Restaurant, and the Restaurant in the "Oakfield," as well as the Snack Bars and the Coronation Hall where large parties can be catered for.

In the late 1950's a Quarantine Station was acquired, and in 1964 the Tropical House was opened. The latter now houses the Reptile House, the Nocturnal House, the Gorillas, and tropical birds (some of them in free flight), tropical plants and trees. Then in 1968 a Laboratory was opened up. This was for the examination and care of the collection, and now houses X-ray equipment which has been donated to us by The Associated Octel Company Limited. In 1972 the Lecture Hall was opened by H.R.H. the Duke of Edinburgh. It was felt that it would be a fitting gesture to associate this building with Miss Russell Allen, a Founder Member of the North of England Zoological Society, as a permanent memorial to her interest in the Society.

Mr. Mottershead suffered serious set-backs when anthrax killed four of his elephants, and foot and mouth disease made the Zoo forbidden territory until clearance was given by the Ministry of Health. Fortunately he had the strength and will-power to overcome all the set-backs and pitfalls which beset zoos from time to time.

In the Rock Garden at the South Entrance there is a plaque in memory of Elizabeth, Mr. Mottershead's late wife, who contributed so much to her husband's ambition.

Breeding an elephant at Chester Zoo had been Mr. Mottershead's great wish, and we are happy to think that he achieved his objective in May 1977.

Mr. Mottershead was dedicated to his work and his love and care for the creatures in his charge was well-known throughout the zoo world. The Zoo will not be the same without him.

THE LION-TAILED MACAQUE

In May 1975 we acquired a female Lion-tailed Macaque called "Flo" and a male by the name of "Zebedee" (mother and son). We already had a male and a female in the collection named "Lennie" and "Lena" (brother and sister) which were acquired in 1963 but they had not bred. We now had two unrelated groups, the new male being housed with "Lena," and the new female with "Lennie." We are delighted with the breeding of a young male to "Lennie" and "Flo." The youngster has been called "Dillon." He was born on the 20th January this year. The names "Flo," "Zebedee" and "Dillon" are from the B.B.C. *Magic Roundabout* Television Programme.

Some species of primates refuse to breed with mates with whom they have been living since infancy, and an exchange of males in a group often leads to successful breedings occurring. An interesting theory exists that there is a biological mechanism preventing the breeding of brothers to sisters and other close relatives. The above paragraph would appear to demonstrate the feasibility of such a theory in that we have bred from an unrelated pair.

In addition to the Lion-tailed Macaque's requirements of substantial quantities of leaf-buds, leaves, grasses, etc., their diet consists of lettuce, cabbage, apples, pears, tomatoes, oranges and grapes; brown bread with milk, boiled eggs, cheese, peanuts, sunflower seeds, and dried vitamins are also given.

These animals are reported to be shy and retiring in the wild, unlike any other species of macaque. The hairy coat of this animal is silky in texture, black or very dark brown in colour except for the ruff which is grey. Both males and females have a ruff, that of the male being more exaggerated. In cold climates the fur of the Lion-tailed Macaque grows very long and thick.

This species of Macaque is seriously in danger of becoming extinct in the wild, and it has therefore been allocated a sheet in the Red Data Book. There is a captive breeding project for the Lion-tailed Macaque, the Wild Animal Propagation Trust having issued



By courtesy of J. Walker, Daily Mirror

LION-TAILED MACAQUE "FLO" WITH HER SON "DILLON"

a Studbook. European collections, and collections in zoos in the United States and in other parts of the world are involved in the project. It has been proved therefore that the species can survive and reproduce in a captive situation. However, it is reasonable to assume that much of the genetic diversity of the population is being reduced as a consequence of inbreeding. At least it can be said that the genetic character of the captive population is probably unlike that of the wild population.

The species *Macaca silenus* now has a distribution in Madras and Kerala, southern India. It is an Indian primate whose range once extended from as far north as Goa, approximately 15°N, southward to near Cape Cormorin. Owing to extensive habitat destruction the Lion-tailed Macaque has apparently become extinct in the north, and its range has been reduced to six separate hill ranges of the Western Ghats between 14° 16'N and 8° 32'N.

In 1968 the total population of the Lion-tailed Macaque was estimated at less than 1,000 specimens and in 1975 closer to 500. In 1977 the species was then considered to be in danger of extinction. Replacement of the indigenous rain forest for purposes of agriculture and industry has decimated the population. The species *Macaca silenus* is apparently unable to adapt to this altered environment, and its chances of survival are low.

"JUBILEE'S BIRTHDAY PARTY"

On May 8th, 1978 "Jubilee" the world's best known baby elephant, bred in Chester Zoo, celebrated his first anniversary in style. A huge "cake" was baked in our Zoo Bakery from wholemeal (a favourite food of the elephants), and this was decorated with a birthday greeting by the Bakery Staff.

"Jubilee" obviously enjoyed all the attraction he was causing and treated his fans to a display of dancing round the perimeter wall of his compound. Children from the many schools in the district came into the Zoo to enjoy his birthday, and greetings cards were sent to him from all over the country.

CHESTER ZOO

THE NORTH OF ENGLAND
ZOOLOGICAL SOCIETY
ZOOLOGICAL GARDENS

FOR A COMPLETE TOUR OF THE ZOO — Follow Nos 1-14 from South Entrance or Nos 16-116 from North Entrance then return to Nos 1-14

**Chester Zoo is Open Daily
from 9.00a.m. until dusk.**

To
LECTURE HALL
& CLASSROOM
(Reservations only)

1. SOUTH ENTRANCE
2. Peacock Enclosure
3. Wapiti Paddock
4. Coati Enclosure
5. Aviaries
6. Milk Bar
7. CORONATION HALL
8. CLOAKROOM, FIRST AID, TOILETS, INVALIDS' TOILETS, MOTHER AND BABY ROOM
9. CAFETERIA
10. Picnic Lawn
11. Bears
12. Jubilee Gardens (Noah)
13. Kiosk
14. AQUARIUM
15. NORTH ENTRANCE
16. PUSH CHAIRS, WHEEL CHAIRS, LOST CHILDREN
17. PARROT HOUSE
18. Free Flight Aviary
19. APE HOUSE
20. Shop and Kiosk
21. Aviaries and Picnic Lawn
22. TOILETS
23. Tuatara Exhibit
24. Peccaries
25. Waterbus Halt
26. Birds of Prey Aviaries
27. Condor Aviary
28. Jackal and Hyena Enclosures
29. Animal Enclosure
30. Porcupine Enclosure
31. Coypus
32. Beavers
33. Giraffe House

34. Camel House
35. Waterbus Halt
36. TROPICAL, NOCTURNAL & REPTILE HOUSES
37. CHIMPANZEES
38. Floribunda Rose Garden
39. Mammal House
40. Gibbon Island
41. H.T. Rose Garden
42. Aviaries
43. Flamingos
44. Waterfowl Enclosure
45. Waterfowl Enclosure
46. Waterfowl Enclosure
47. Penguins
48. Sealions
49. Rock Garden
50. Polar Bears
51. Big Cat Enclosure
52. Waterfowl Enclosure
53. Anteaters
54. BIRD HOUSE
55. FOUNTAIN RESTAURANT
56. Ape Nursery
57. TOILETS
58. Lions
59. SOUVENIR SHOP
60. TOILETS
61. OAKFIELD RESTAURANT

62. P.O. Telephone
63. Aviary
64. Animal Enclosure
65. Animal Enclosure
66. Ornamental Rock Garden
67. Wallabies and Kangaroos
68. Kangaroo Enclosure
69. Aviary
70. Cheetahs
71. WATERBUS BOOKING OFFICE AND KIOSK
72. Waterbus Halt
73. Fountain Flower Gardens
74. Rose Garden
75. Red Lechwe
76. Red Lechwe
77. Deer or Antelope Enclosure
78. Waterbus Halt
79. Zebra and Deer Enclosure
80. Brown Bears
81. ELEPHANTS
82. Hippos
83. Tapirs
84. Small Mammal House
85. Waterfowl Enclosure
86. Ankole Cattle
87. Emus, Cranes and Flamingos
88. Outside Monkey Enclosures
89. Baboon Pens
90. Cat House
91. Tiger Enclosures

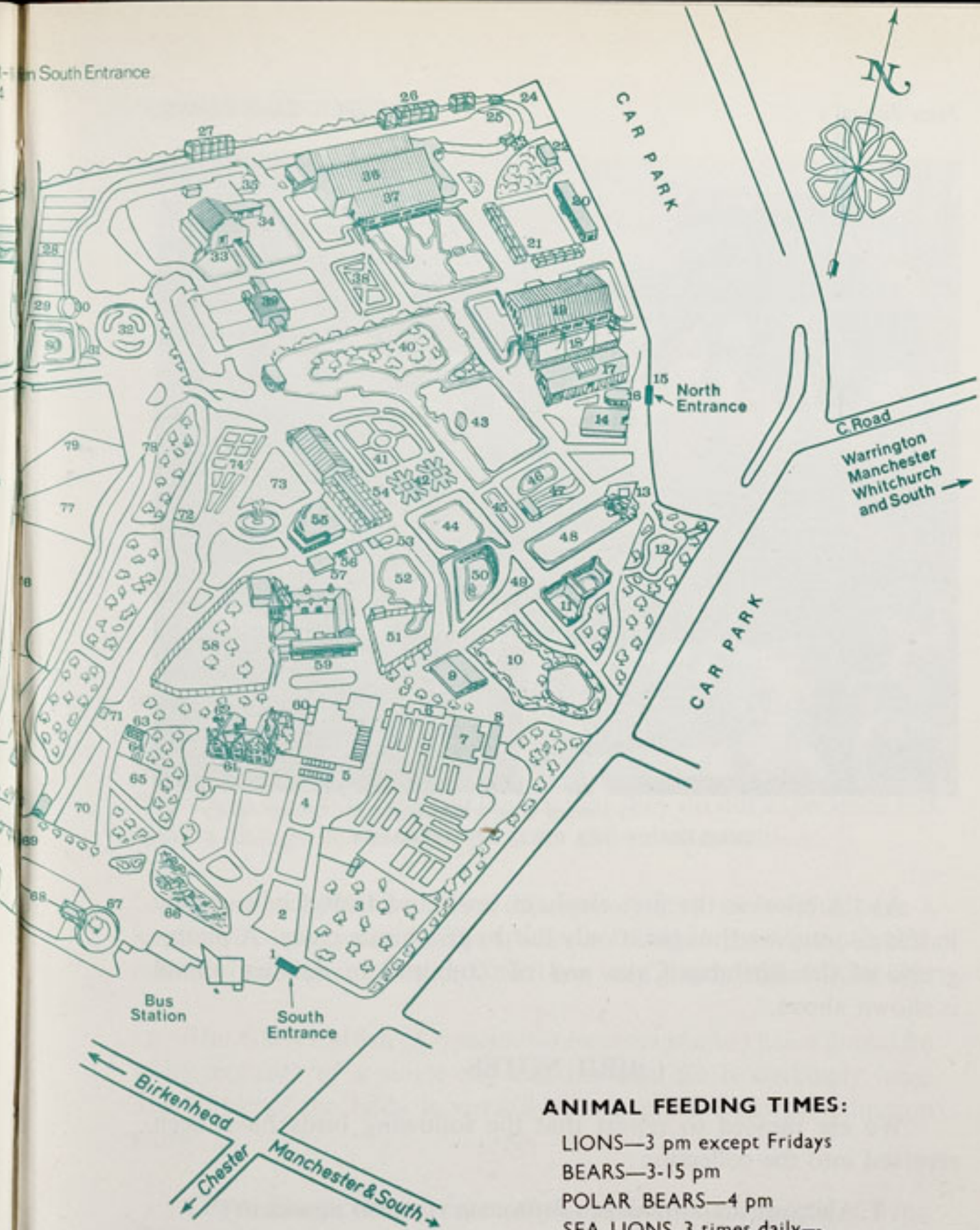
92. Antelope Enclosure
93. Antelope Enclosure
94. Antelope Enclosure
- 94a. Llamas
95. Zebras
96. Zebras
97. Waterfowl Enclosure
98. Waterfowl Enclosure
99. Waterfowl Enclosure
100. Blackbirds
101. Wallabies
102. Animal Enclosure
103. Wallabies
- 103a. Reindeer

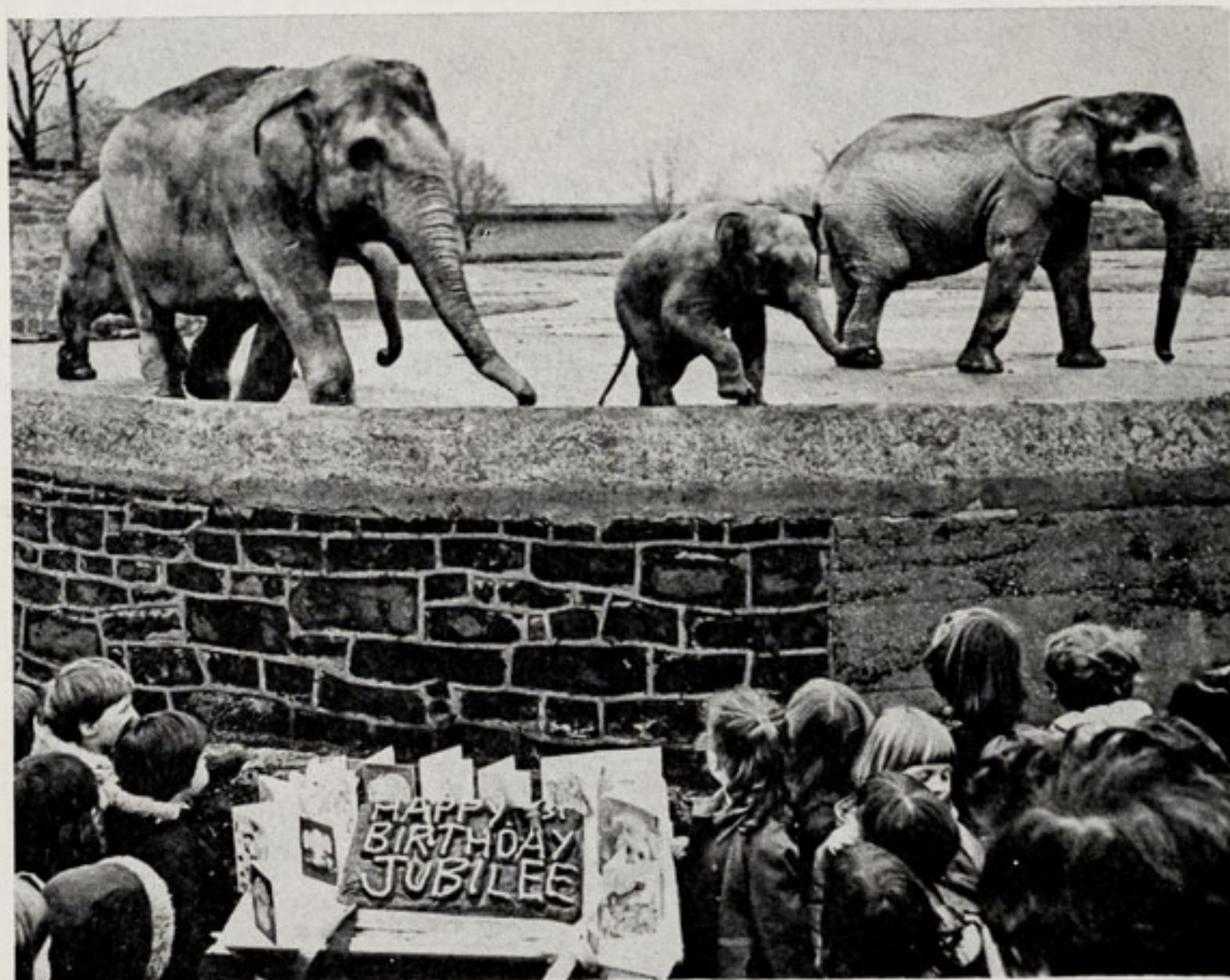
104. Pere David's Deer Paddock
105. Przewalski's Horses
- 105a. Onager
106. Arabian Gazelles
107. Musk Oxen
108. Bison
109. Pere David's Deer Paddock
110. Prairie Marmots, Alpacas
111. Antelope Enclosure
112. RHINOS
113. TOILETS
114. Mpila Snack Bar
115. Antelope Enclosure
116. MONKEY HOUSE

ANIMALS MAY BE MOVED
FROM TIME TO TIME

ANIMAL FEEDING TIMES:

- LIONS—3 pm except Fridays
- BEARS—3-15 pm
- POLAR BEARS—4 pm
- SEA LIONS 3 times daily—
2-30 pm, 3-30 pm, 4-30 pm





By courtesy of Steve Cartwright, Mel Grundy Agency
 "JUBILEE" ON HIS FIRST ANNIVERSARY

As "Jubilee" is the first elephant born and reared in captivity in this country we thought it only fair to give him a party. A photograph of the Birthday Cake and of "Jubilee" in dancing mood is shown above.

BIRD NOTES

We are pleased to report that the following birds have been received into the collection:

- 1 Alexandrine Parrakeet (*Psittacula eupatria nipalensis*)
- 1.0 Jardine's Parrot (*Poicephalus quielmi*)
- 1 Ruppell's Parrot (*Poicephalus ruppellii*)
- 1 Southern Stone or Bush Curlew (*Burhinus magnirostris*)
- 2.2 Blue-eared Pheasants (*Crossoptilon auritum*)
- 1.1 Pennant's Parrakeet (*Platycercus elegans*)
- 1.0 Turquoise Parrakeet (*Neophema pulchella*)
- 1 Pied Hornbill (Indian) (*Anthracoceros malabaricus*)
- 1 Emerald Toucanet (*Aulacorhynchus prasinus*)

BIRD NOTES—*cont'd.*

- 4 Mountain Witch Doves (*Geotrygon versicolor*)
- 2 Ross's Snow Geese (*Anser rossii*)
- 2.2 Boat-tailed Grackles (*Cassidix mexicanus*)
- 1.0 Fairy Bluebird (*Irena puella*)
- 0.1 Golden Eagle (*Aquila chrysaetos*)
- 1.0 Ostrich (*Struthio camelus*)
- 0.1 Goffin's Cockatoo (*Kakatoe sanguinea goffinii*)
- 1.0 Green-naped Lorikeet (*Trichoglossus haematod micropteryx*)

AQUARIUM NEWS

Further to our report in the April edition of the magazine we are pleased to record that the newly acquired species are making good progress. Some are new to the Aquarium but others we have had before. Great care has to be exercised when new exhibits are introduced and it is imperative to ensure that they do not experience too rapid a change in water temperature and other conditions.

The Black Widow Tetra (*Gymnocorymbus ternetzi*) attains a length of 2 ins. (5 cms.). The species is found in the Matto Grosso region of the River Paraguay and it is a very greedy omnivorous fish.

The Glass Catfish (*Kryptopterus macrocephalus*) has a dorsal fin which consists of a single ray and the anal fin is strikingly long. The whole of the body is virtually transparent, hence its common name.

Clown Loach (*Botia macracanthus*) can attain a length of 9 ins. (22.5 cms.) and its distribution area is Borneo and Sumatra. The orange-yellow background colouration is transversed by three broad black bands. The Clown Loach has six short barbels around the mouth in common with other members of the genus.

The distribution of the Long-finned Characin (*Alestes longipinnis*) is West Africa and the species is numerous in its range of distribution.

In the River Amazon and its many tributaries is to be found the Chequerboard Cichlid (*Crenicara maculata*). The species is becoming one of the favourite 'Tropicals' of the aquarist and many of the Cichlid characteristics of courtship and territorial behaviour can be observed.

The Spanner Barn (*Barbus lateristriga*) found all over Asia is a member of a large genus which is also represented in Africa. Barbs are egg-laying fishes and they tend to live in shoals on the river bed. They are well-suited to captivity because of their peaceful nature.

We have exhibited Half Beaks (*Dermogenys pusillus*) in the Aquarium before. Although not strictly a member of the 'Live Bearing Tooth Carp' Family this interesting species produces live young and is a surface dwelling fish which has a distribution in the Malay Peninsula.

Exodon paradoxus, the Rainbow Characin, is not a newcomer to the Aquarium. This species can attain a length of 4 ins. (10 cms.) in captivity and is colourful when young. It has a quarrelsome nature and should share a tank with fish of compatible size.

Guppies (*Poecilia reticulata*) are distributed in South America and the West Indies. The species was first discovered by D. R. Guppy in Trinidad in 1866. The genus was originally classified as '*Lebistes*' but since 1963 the name of '*Poecilia*' has been accepted internationally. The extreme variability of colour and finnage has allowed aquarists to produce many of the strains seen in aquaria.

Leporinus affinis is quite widely distributed in South America. Its shape is typical of the genus and the males are distinguished by their more slender build.

The Snake Eel (*Myrichthys colubrinus*) is distributed in the shallow sea areas around the Philippines. The skin of this species is thick and scaleless.

We have recently acquired another Scorpion Fish (*Pterois volitans*). This species is also known as the Dragon, Turkey and Lion Fish. It is found on coral reefs in the Indian Ocean and in the

south-western Pacific as far east as Samoa. The rays of the first dorsal fins and of the breast and pelvic fins are greatly elongated. Poison glands are present in grooves along the spiny rays of the dorsal fin and, although not normally lethal, the wounds these inflict can be very painful. There are several species of Scorpion Fish, all of which are tropical.

The Orange-striped Trigger Fish (*Balistapus undulatus*) is a typical representative of the Family. The body is deep and compressed, and seen from the side it is almost diamond-shaped. The head occupies about a third of the length, the mouth is small and the eyes fairly large. This species moves slowly in a dignified manner and it will take refuge in a rock or crevice. Rocks and even pieces of coral should be provided in the tank for Trigger Fishes.

Chaetodon collaris, the Butterfly Fish, is a species which lives around coral reefs in shallow tropical seas. The marine Butterfly Fishes are not related to the fresh-water species.

In the Marine Section of the Aquarium the recently acquired Damsel or Demoiselle Fishes are exhibited. The species are as follows: Domino Damsel (*Dascyllus trinaculatus*), Electric Blue Damsel (*Pomacentrus coeruleus*) and Yellow-tailed Blue Damsel (*Abudedefduf escanthurus*).

Most Damsel Fishes inhabit shallow tropical waters, especially round the coral reefs. They are brightly coloured as shown by their common names. Less than 6 ins. (15 cms.) in length, the body is deep and somewhat flattened from side to side with prominent dorsal fins, the front one of which is spinous.

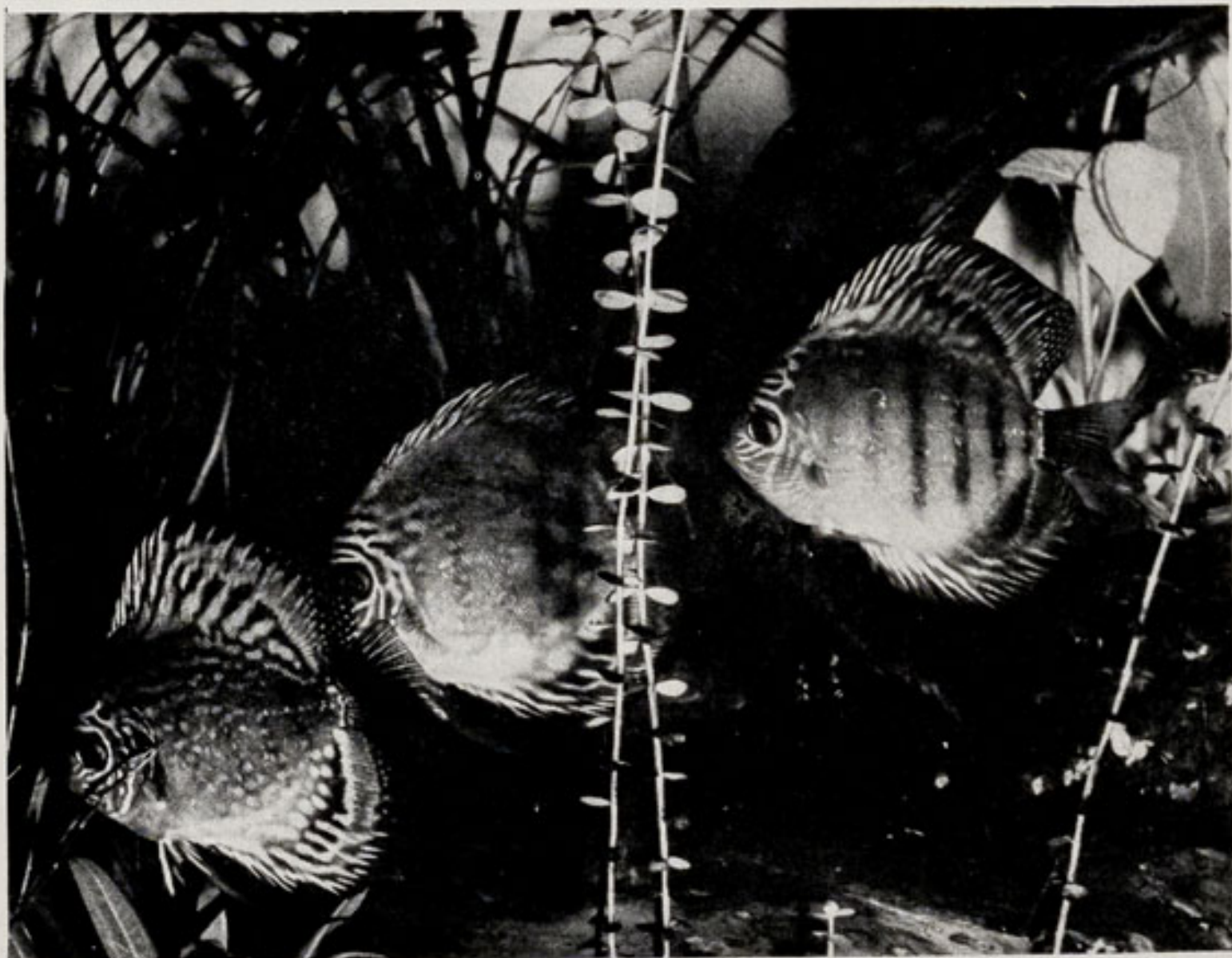
Damsel Fishes are often aggressive, with a strong territorial sense. Their aggressiveness is expressed by clickling noises with "teeth" lining the throat. As is usual in fishes, the strong territorial instinct is linked with a marked degree of parental care.

In captivity Damsel Fishes live up to their reputation and the tanks in the Aquarium have been adapted to cater for the needs not only of the marine exhibits but all the species. This is accomplished by adding rocks, coral, gravel stones, and plants to the tanks.

Visitors to the Aquarium will notice that the layout plan has been brought up to date. This is now more comprehensive and members of the public should have no difficulty in locating tanks with the new numbering system.

* * *

Also in the Aquarium we have the Discus (*Symphysodon discus*). These have spawned on several occasions but we have not reared any young.



By courtesy of K. W. Green, A.R.P.S.

DISCUS (*Symphysodon discus*) TO BE SEEN IN THE AQUARIUM

The Discus (or Pompadour Fish) is a Cichlid from the Amazon region and is known in America as the 'King.' The colours of this species vary enormously with the basic body hues ranging from orange to russet red and blue-green. Distinctive features are the discoid shape, similar to the Angel Fish but without the high, soaring dorsal and anal fins, and the high patterns of undulating lines, vertical through the eye and throat, horizontal on the head, nape and gill-cover. No written description can however convey the variety and beauty of this species.

GARDENING NOTES

With the Spring flowers being delayed this year by low temperatures and cold east winds it is now a delight to see the flower beds in full bloom.

On the 10th of April there was a two-inch fall of snow which melted during the afternoon, but that night a keen frost brought the temperatures down to 4°C by the next morning. This spoilt the flowers on the Camellia, turning the edges brown, some of the blooms actually dropping off. It is hoped that the later-flowering Camellias will not be affected by frost. Our Magnolia flowers were not affected as the buds were only just beginning to open at that time.

In order to display continuous colour on the rockeries during the summer Violas, *Mesembryanthemums* and *Gazania* have been planted out. All these are low-growing and have a spreading habit.

The *Mesembryanthemum*, known by the common name of "Livingstone Daisy," will also be planted on the rockeries. The species of this one is *criniflorum* which refers to its hair-like petals. *Mesembryanthemum roseum* is the other one we plant and is a half-hardy perennial. Cuttings are propagated off this in September and kept in the greenhouses during the winter. *Mesembryanthemum* is derived from two Greek words joined together, *Mesembria* representing midday, and *antheon* a flower, probably referring to the blossoms opening best in the sunshine.

Most of the *Rhododendrons* will be in flower by the end of May. A large group of these consisting of 250 plants in all is situated at the end of the Monkey House, opposite the Pacyhderm House. A path leading to the service entrance of the Monkey House divides them into two groups. The name *Rhododendron* itself is made up of two Greek words, *Rodon*, a rose and *dendron*, a tree.

Among the varieties planted in this area are:

Lord Roberts, with dark red blooms displaying black spots

Pink Pearl, one of the best varieties for large flowers

Britannia, its blooms a brilliant scarlet-crimson

John Walter, which has rich crimson blooms

Pink Perfection, the pink flowers shaded with lilac

Purple Splendour, a dark purple bloom with a black "eye"

Some good varieties of *Rhododendron* are also planted in the Queen Elizabeth II Jubilee Garden; these consist of:

Bagshot Ruby, a fine carmine-purple

Cynthia, a rosy crimson

Louis Pasteur, light red with a pale centre

Hugh Koster, a bright shining crimson

Mrs. G. W. Leak, which has large pink flowers with brown blotches

Mrs. R. S. Holford, having large trusses of rich salmon-coloured
flowers

Fastuosum flore pleno, has a rich mauve semi-double bloom

Growing on the wall of the Mpila Snack Bar is one of the best varieties of *Ceanothus veitchianus* which should be a mass of deep blue flowers at the end of May. Also on the same wall a few yards away with a white flower is the Mexican Orange shrub having the botanical name *Choisya ternata*. This shrub can flower twice a year, in May and again in the Autumn.

With the daylight hours lengthening daily the plants are growing more vigorously in the Tropical House and already the first flowers of *Bougainvillea* can be seen.

The group of *Hibiscus* was pruned rather heavily this year in order to try and encourage some strong growth from lower down the stems which should give us more flowers. *Cliviaminiata* are now in flower and these grow well in the more shady parts of the building. This plant is easily increased by divisions. It was named after the Duchess of Northumberland, a member of the 'Clive' family.

Our greenhouses and frames are now full of summer bedding plants ready to be planted out early in June when the dangers of frost have passed.

SUBSCRIPTIONS

New readers of the CHESTER ZOO NEWS who would like to receive the magazine regularly may be interested to know that subscription forms can be obtained from the souvenir shops. An annual subscription (12 issues) costs £2.30, postage paid, which can either be handed over the counter at the shops or posted with the completed form to the Director-Secretary, Chester Zoo, Chester.

The following notice is displayed on several boards in the grounds
Please comply with it at all times

FEEDING OF ANIMALS AND BIRDS

IT IS AN OFFENCE for any member of the public to offer food of any description to any Animal or Bird in Chester Zoo.

This regulation is made for the sake of the health of the Animals and Birds. Since the **NO FEEDING** rule was introduced, the number of deaths has dropped appreciably and sickness due to wrong feeding has been virtually eliminated.

What you may be offering to an animal may only be a sweet or an inoffensive piece of bread, but it can mean a death sentence for the animal. For example, a cough drop, which may relieve your cough, can cause instant death to many Animals and Birds in the Zoo.

You must not lose sight of the fact that you are only one of over a million visitors who visit the Zoo annually. If for instance an elephant had one bun from only one tenth of a day's visitors during the summer, it would eat between three and four thousand. You can guess the result.

We realise what a temptation it is for visitors, particularly children, to feed our Animals and Birds and this is why we invite members of the public to be present at the official feeding times.

This is a polite warning to you, asking you not to feed the animals. If you ignore it, the Keepers are authorised to ask you to leave the Gardens.

If you really love Animals and Birds, you will appreciate the wisdom of the ruling — No feeding by members of the public.

**PLEASE HELP US TO KEEP OUR COLLECTION OF
ANIMALS NOT ONLY ALIVE BUT IN FIRST CLASS
CONDITION**

Printed in England by
W. H. Evans & Sons Ltd.
Sealand Road Trading Estate
Chester