

CHESTER ZOO

SOUVENIR
GUIDE



The North of England Zoological Society

Zoological Gardens

UPTON-BY-CHESTER

CHESTER ZOO

THE NORTH OF ENGLAND
ZOOLOGICAL SOCIETY
ZOOLOGICAL GARDENS

What to see – and how to get there

FOR A COMPLETE TOUR OF THE ZOO – Follow Nos.1–116 from South Entrance, or Nos.16–116 from North Entrance then return to Nos.1–14.

**Chester Zoo is Open Daily
from 10a.m.**



- 1. SOUTH ENTRANCE
- 2. Peacock Enclosure
- 3. Wapiti Paddock
- 4. Small Mammal Enclosure
- 5. Aviaries
- 6. Site of new Restaurant
- 7. Site of new Restaurant
- 8. CLOAKROOM, FIRST AID, TOILETS, INVALIDS' TOILETS, MOTHER AND BABY ROOM CAFETERIA
- 9. Picnic Lawn
- 10. Ornamental Garden
- 11. Jubilee Gardens (Noah)
- 12. Kiosk
- 13. AQUARIUM
- 14. NORTH ENTRANCE PUSH CHAIRS, WHEEL CHAIRS, LOST CHILDREN PARROT HOUSE
- 15. Free Flight Aviary
- 16. APE HOUSE
- 17. SHOP AND KIOSK
- 18. Picnic Lawn
- 19. CLASSROOM

- 23. TOILETS
- 24. TUATARA EXHIBIT
- 25. Peccaries
- 26. Birds of Prey Aviaries
- 27. Condor Aviary
- 28. Wild Dogs
- 29. Animal Enclosure
- 30. Porcupine Enclosure
- 31. Coypu
- 32. Beavers
- 33. Giraffe House
- 34. Camel House
- 35. Giant Tortoise Paddock
- 36. TROPICAL AND REPTILE HOUSES
- 37. CHIMPANZEES
- 38. Floribunda Rose Gdn.
- 39. Zebra House
- 40. Island
- 41. Hybrid Tea Rose Gdn.
- 42. Aviaries
- 43. Flamingos
- 44. Waterfowl Enclosure
- 45. Site for new Penguin Pool
- 46. Site for new Penguin Pool

- 47. Site for new Penguin Pool
- 48. Sea Lions
- 49. Rock Garden
- 50. Polar Bears
- 51. Big Cat Enclosure
- 52. Waterfowl Enclosure
- 53. Capybara
- 54. BIRD HOUSE
- 55. FOUNTAIN RESTAURANT
- 56. Animal Exhibit
- 57. TOILETS
- 58. Lions
- 59. SOUVENIR SHOP
- 60. TOILETS
- 61. OAKFIELD RESTAURANT & Memorial Gardens
- 62. P.O. Telephone
- 63. Gibbons
- 64. Arctic Fox Enclosure
- 65. Serval Enclosure
- 66. Ornamental Rock Garden
- 67. Wallabies and Kangaroos

- 68. Kangaroo Enclosure
- 69. Paddock
- 70. Cheetahs
- 71. WATERBUS BOOKING OFFICE AND KIOSK
- 72. FLORAL CLOCK
- 73. Fountain Flower Gardens
- 74. Rose Garden
- 75. Red Lechwe
- 76. Red Lechwe
- 77. Deer or Antelope Enclosure
- 78. Zebra and Deer Enclosure
- 79. Zebra and Deer Enclosure
- 80. Brown Bears
- 81. ELEPHANTS
- 82. Hippos
- 83. Tapirs
- 84. Small Mammal House
- 85. Waterfowl Enclosure
- 86. Ankole Cattle
- 87. Emus, Cranes and Flamingos
- 88. Arabian Gazelle
- 89. Baboon Pens
- 90. Cat House
- 91. Tiger Enclosures

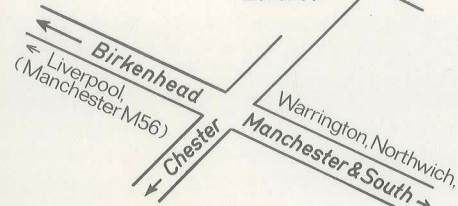
- 92. Przewalski's Horses
- 93. Antelope Enclosure
- 94. Reindeer Enclosure
- 94a. Llamas
- 95. Antelope Paddock
- 96. Antelope Paddock
- 97. Waterfowl Enclosure
- 98. Waterfowl and Axis Deer
- 99. Waterfowl Enclosure
- 100. Blackbuck
- 101. Wallabies
- 102. Ostrich
- 103. Père David's Deer
- 104. Antelope Enclosure
- 105. Onagers
- 105a. Onagers
- 106. Arabian Gazelles
- 107. Guanaco
- 108. Bison
- 109. Père David's Deer Paddock
- 110. Prairie Marmots and Alpacas
- 111. Antelope Enclosure
- 112. RHINOS

- 113. TOILETS
- 114. MPILA SNACK BAR
- 115. Antelope Enclosure
- 116. MONKEY HOUSE

- A Alpacas, 110
- Antelopes, 75, 96, 100, 115
- Aquarium, 14
- B Bears, 50, 80
- Beavers, 32
- C Camels, 34
- CAR PARK, 15
- Cheetahs, 70
- Chimpanzees, 37
- Classroom, 22
- CLOAKROOM, 8
- D Deer, 3, 79, 104, 109
- E Eagles, 26
- ELEPHANTS, 81
- Emus, 87
- EXITS, 1, 15
- F FIRST AID, 8
- Flamingos, 43, 87
- G Gazelles, 106
- Gibbons, 63
- Giraffe, 33
- Gorillas, 36
- H Hippos, 82
- Horses, Przewalski's, 92

- I Insects, Tropical House, 36
- K Kangaroos, 68
- L Leopards, 90
- Lions, 58
- Llama, 94a
- LOST CHILDREN, 16
- M Monkeys, 116
- O Owls, 5
- Orang-utans, 19
- Ostrich, 102
- P Parrots, 17
- Peacocks, 2
- Polar Bears, 50
- R Reptiles, 36
- RESTAURANTS, 9, 55, 61
- Rhinos, 112
- S Sea Lions, 48
- Snack Bars, 114
- T Tigers, 91
- TOILETS, 8, 23, 57, 60, 113
- Invalids' Toilets, 8
- Tropical House, 36
- Tuatara, 24
- Telephone, 62
- W Wapiti, 3
- Waterbus, 71
- Z Zebras, 39, 79
- ZOO SHOPS, 20, 59

ANIMALS MAY BE MOVED FROM TIME TO TIME



GENERAL INFORMATION

Times of Opening: The Zoo is open daily from 10.00 a.m. (except Christmas Day). Some of the animals start going indoors during the afternoon. The animal houses are all closed by three quarters of an hour after last admission. The gardens close at dusk.

Catering Facilities:
(Subject to Revision) Oakfield Restaurant, No. 61 (Licensed).
Cafeteria, No. 9 Self-
Mpila Snack Bar, No. 114 service
Picnic Lawns adjoining
Fountain Restaurant, No. 55— available
for Parties (open only between Easter
and September).
Rainbow Kiosk, No. 20—Picnic Lawns
adjoining.

Lost Children: Opposite North Entrance Gate.

First Aid Post: Near Cafeteria.

**Wheelchairs and
Pushchairs:** Can be hired from Kiosk opposite
North Entrance Gate.

Toilets: Near Cafeteria—Invalids' Toilets.
Adjoining Oakfield Restaurant.
Adjoining Fountain Restaurant.
Adjoining Rainbow Kiosk.
Adjoining Mpila Snack Bar.

Feeding Times: Enclosure 58, Lions—3.00 p.m. except
Fridays.
Enclosure 48, Sea Lions—three times
daily, 2.30 p.m., 3.30 p.m. and 4.30 p.m.
depending on Sea Lions' appetite.

Waterbus: The Waterbus Trip commences opposite
the Oakfield Restaurant.

Party Rates: Available to Parties of 20 or more.

Further details upon request from:

The Party Office, Chester Zoo, Chester, CH2 1LH
Telephone: Chester (0244) 380280.

There is plenty of cover if wet.

Please do not feed the animals, it can harm them and is not necessary. Please help us to keep the Zoo tidy by using the litter bins provided. Do not spoil other people's enjoyment by playing radios. Please keep children under control, and from straying on to flower beds.



Mixed display of orchids in Tropical House

Tropical House

The Tropical House was completed in 1964 and is now mature, with a wide variety of trees and plants. This building covers an area of approximately 200 feet by 250 feet, and is over 60 feet high. Here the Chimpanzees and Gorillas have their sleeping quarters. A large collection of tropical birds are at liberty so that they breed freely.

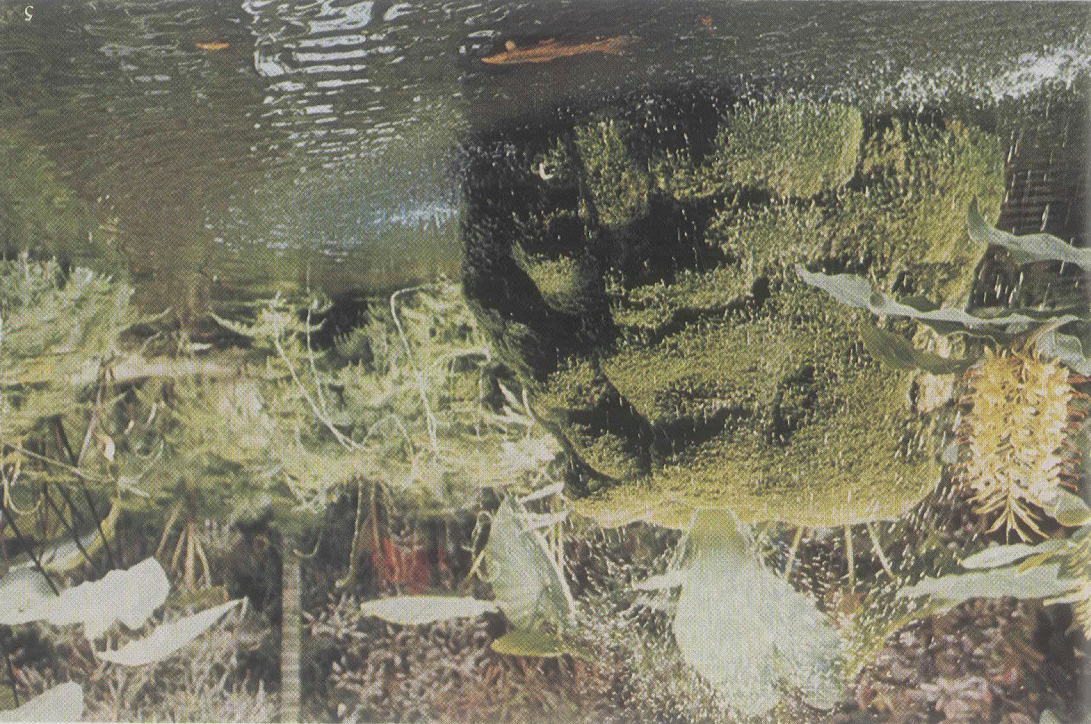
One of the largest collections of Reptiles in the country is incorporated in the Tropical House. An Insect Section housing unusual specimens can be seen at the top of the balcony.



Atlas Moth

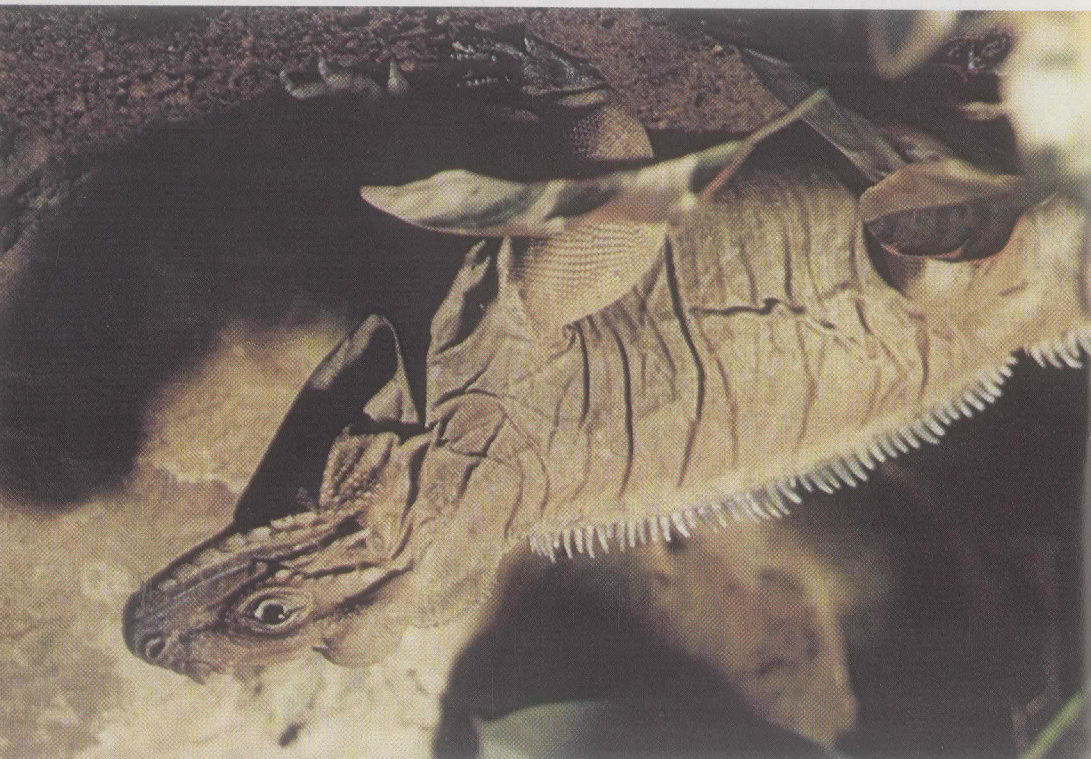
Anolis Lizard





Ginger Lily beside Tropical House pool

Rhinoceros Iguana





Weaver nests in Tropical House



Albino Western Diamond-backed Rattlesnake



Opposite: *Common Iguana*

Tuatara

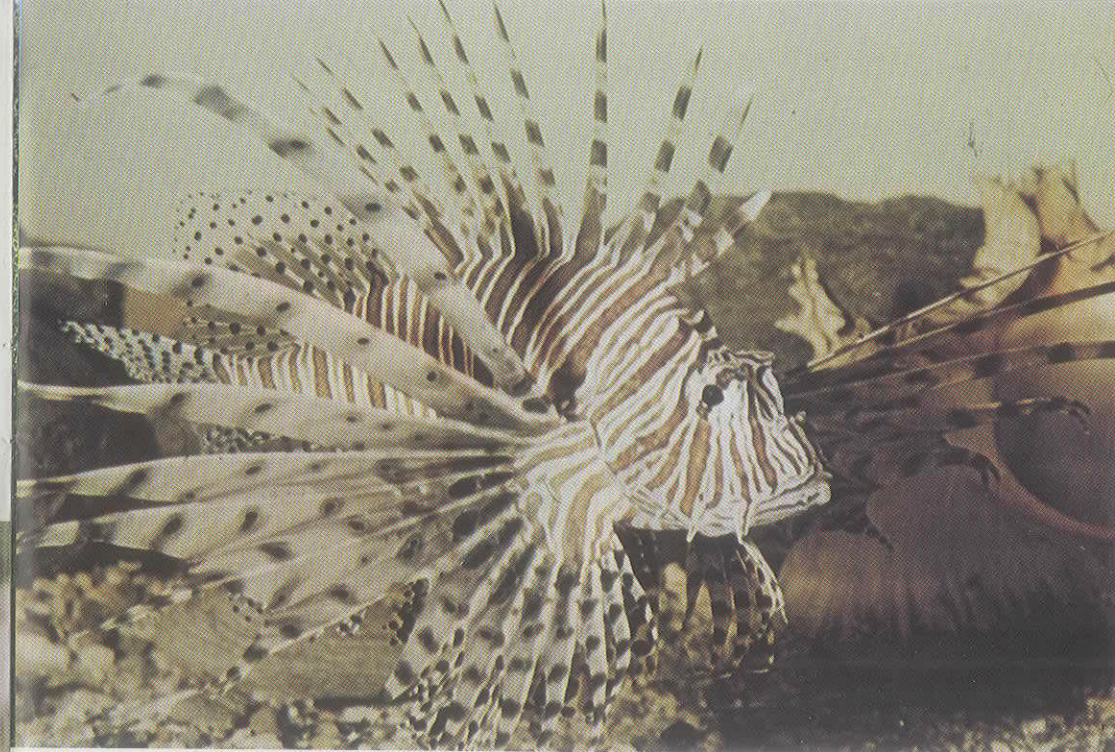
Echidna



A prime feature of the Tropical House is the wide variety of tropical plants, including Palms, Bananas, Hibiscus, Bougainvillea, Oranges and other Citrus fruits.

It is very pleasant to sit in this house and watch the Birds flying at liberty amidst the tropical vegetation.

Blacksmith's Plover



Scorpion Fish

Aquarium

Our present Aquarium was built in 1952 and is situated opposite the North Entrance Gate.

It is so designed that after passing through the turn-stile one moves around continually whilst viewing the exhibits, which consist of seventy-eight tanks containing tropical freshwater and marine fish and temperate freshwater fish. The Aquarium is very popular with our visitors and there have been many breeding successes. At the present time there are approximately 2,300 fish on view, incorporating 180 different species.



Discus Fish

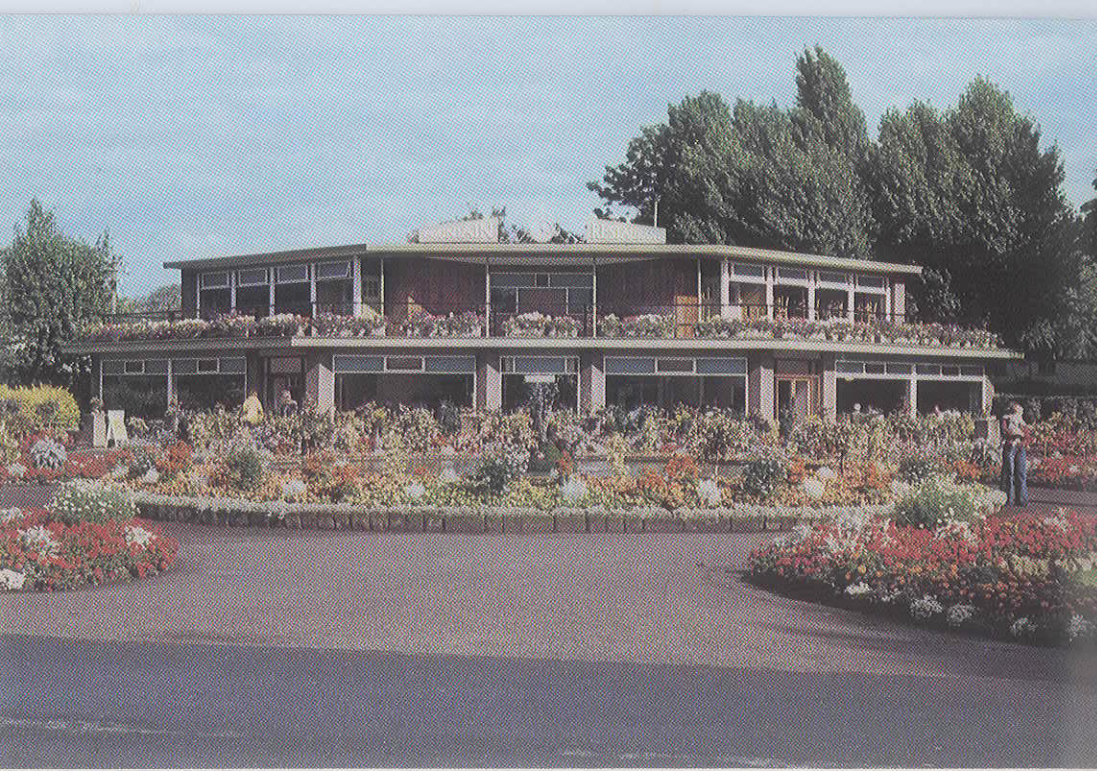


Flower border and Zebras

Piranha

Jubilee Gardens (Noah) (Sculptor: Sean Rice)

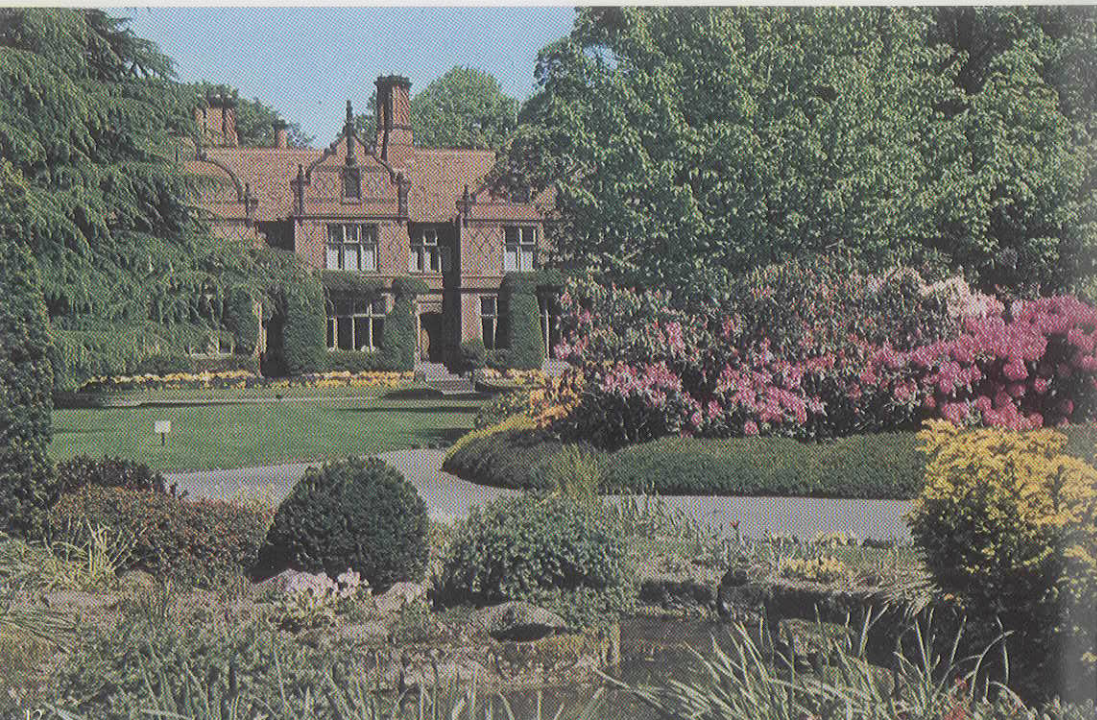




Fountain Restaurant



Summer bedding and Hybrid Tea Rose Garden



Oakfield Restaurant



Begonias and Standard Fuchsias outside Oakfield Restaurant

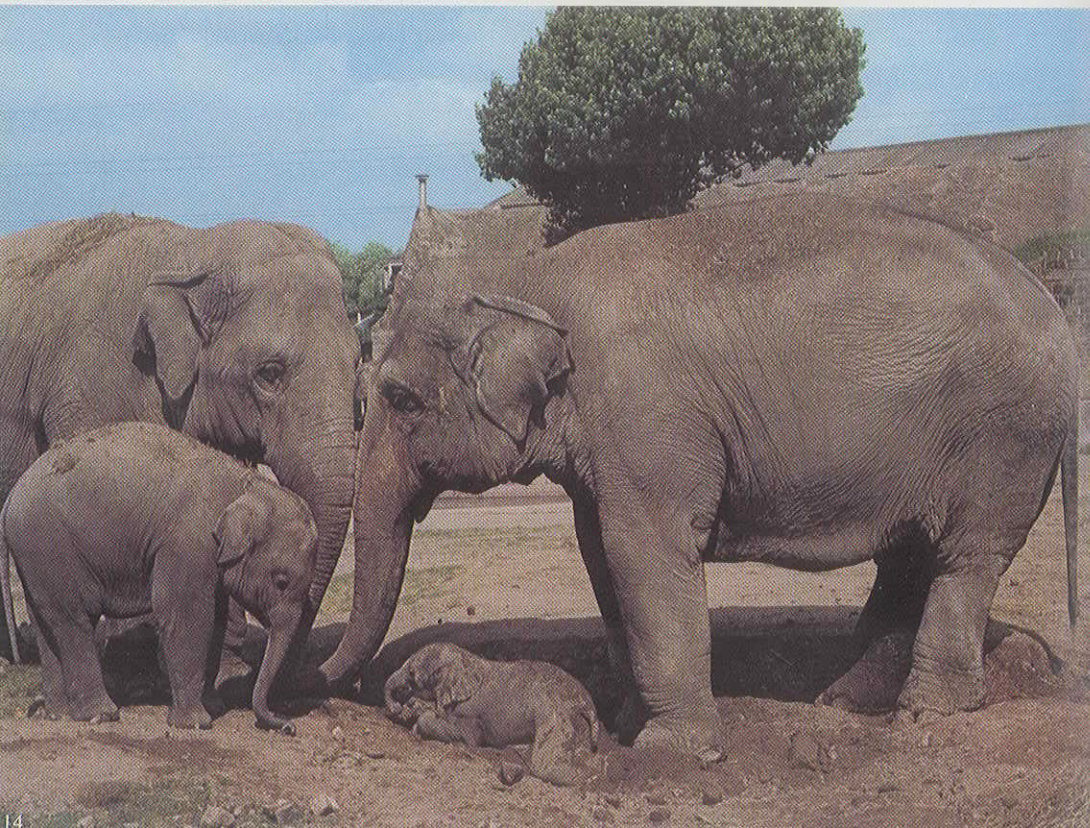
Pachyderm House

Our Pachyderm House is one of the largest buildings in the Zoo and accommodates Elephants, Hippos and Tapirs.

It contains a wide variety of plant life, carefully sited to grow out of the animals' reach. These plants serve a dual purpose, in that they make the building attractive for the animals and, at the same time, help to disguise their natural smell.

The new born baby elephant in this picture lived for only a few days. This made scientific history in that it was a hybrid between African and Indian Elephants, hitherto thought impossible. It is now in the British Museum of Natural History in South Kensington. The larger baby, Jubilee, is the first baby elephant to have been bred successfully in Britain.

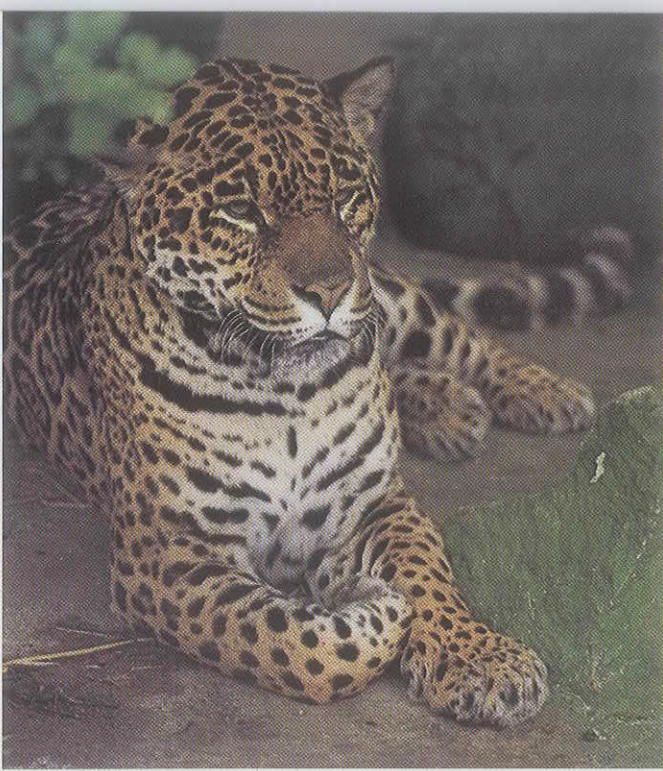
Indian Elephants and Hybrid Calf, 1978



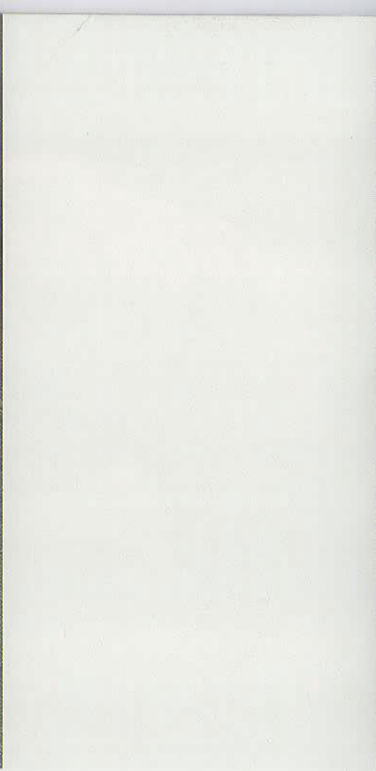
White Rhino

South American Tapir





Jaguar



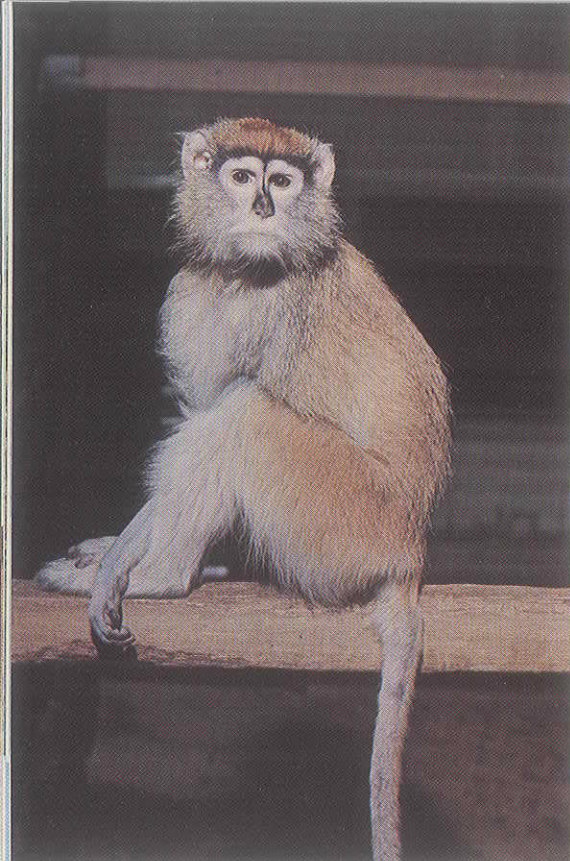
Tiger Cub



Leopard



Cheetah



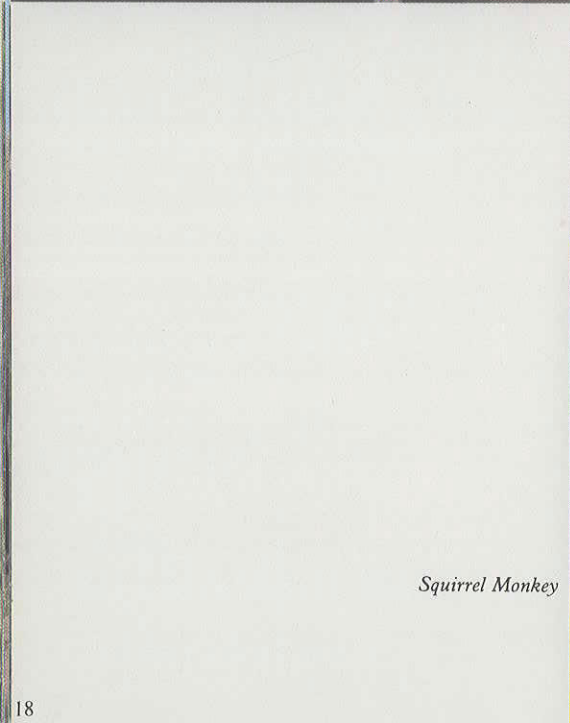
Patas Monkey

The APE HOUSE, MONKEY HOUSE, CAT HOUSE and PARROT HOUSE are always popular with visitors, and the following pages give some idea of the many animals and birds to be seen.



Female Orang-utan

Male Orang-utan

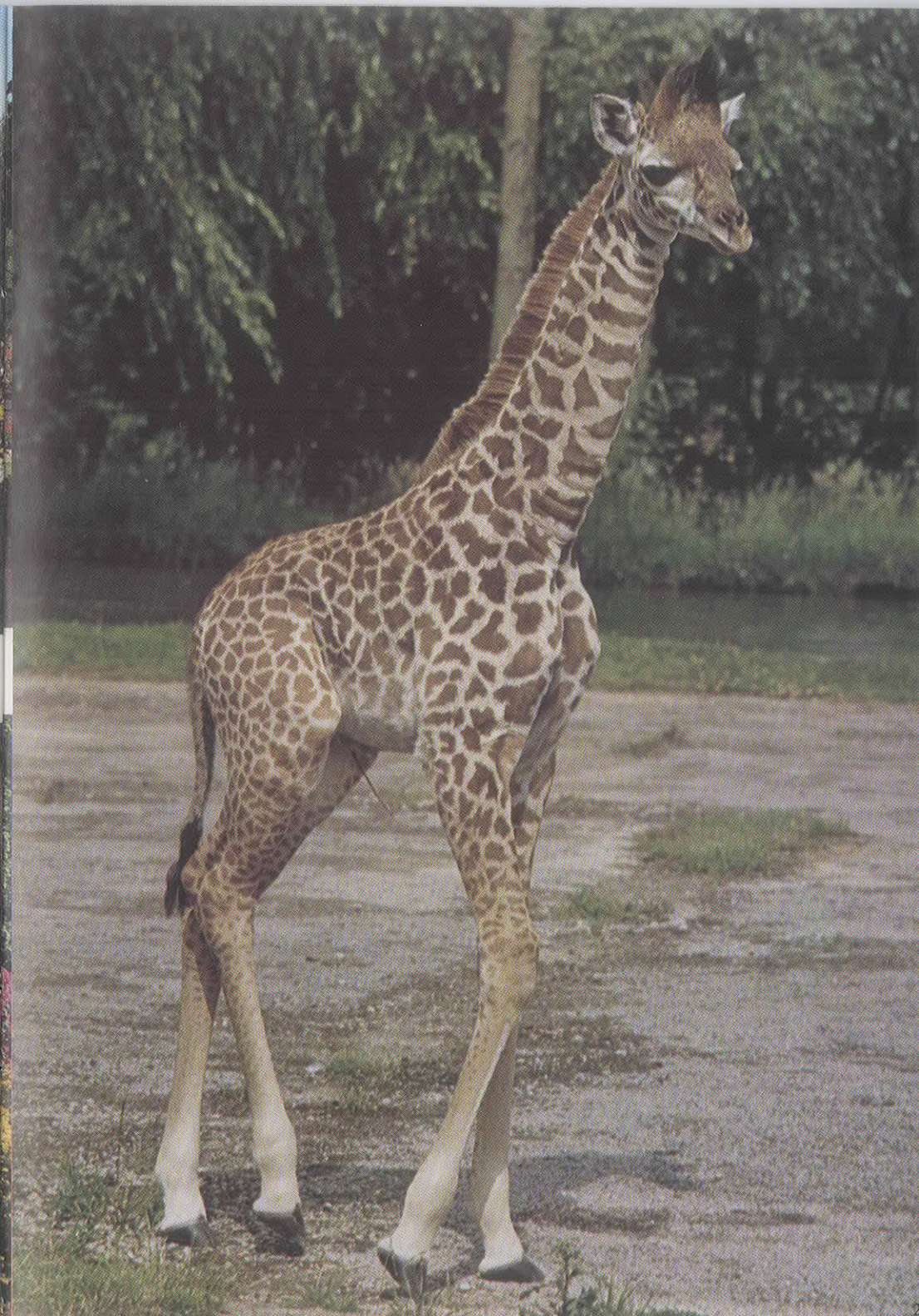


Squirrel Monkey





Gorilla



Baby Giraffe ▶

Chimpanzees





Ring-tailed Lemur



Crimson-winged Parakeet

Serval

Fennec Fox





Waterbus

*A popular feature,
particularly with the
children, is the Zoo's
Waterbus.*



Southern Stone Curlew



Flamingos

Snow Goose





Red Lechwe



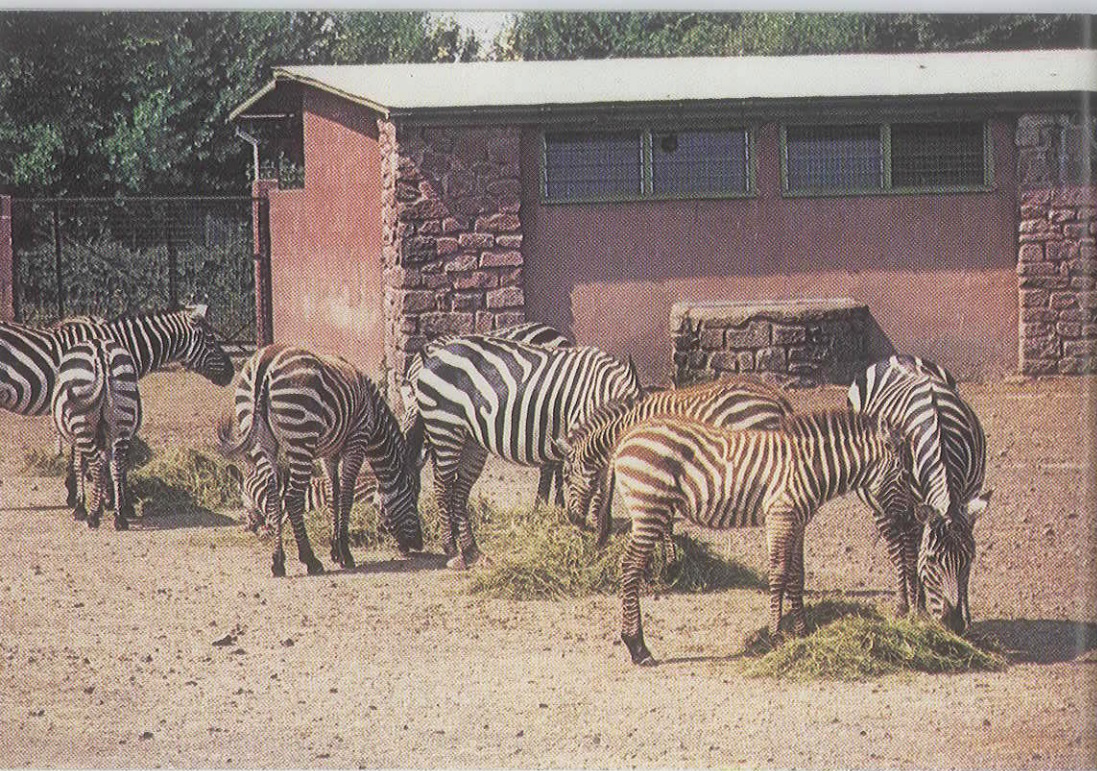
Greater Kudu

Young Greater Kudu



Gnu

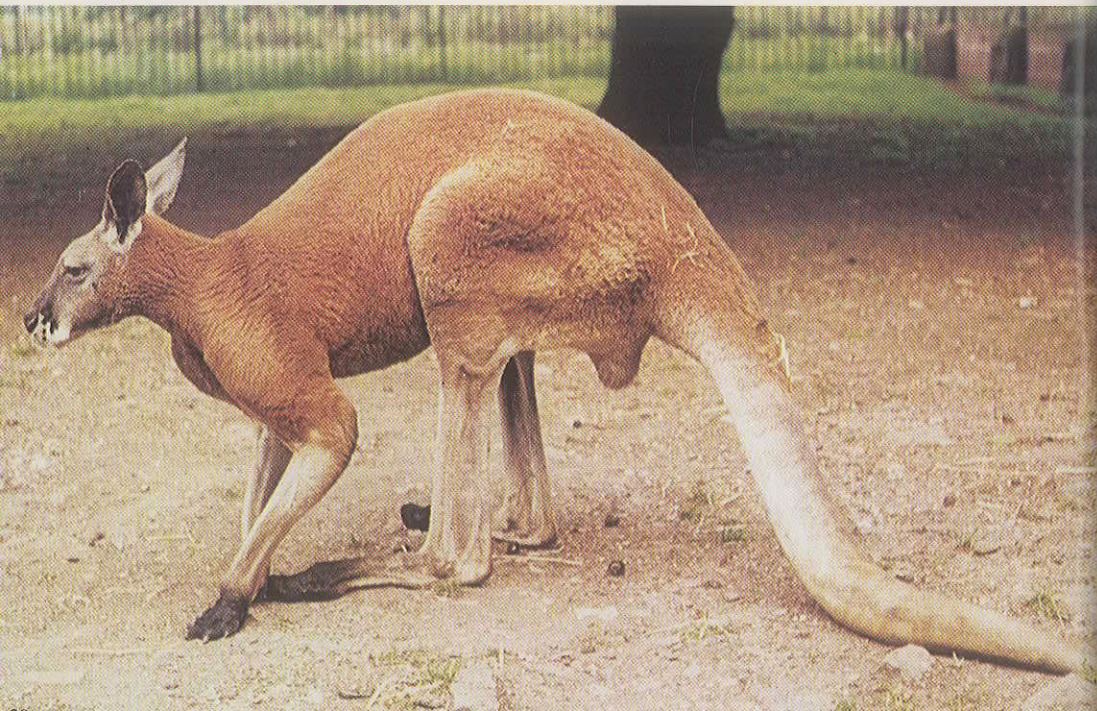




Grant's Zebra



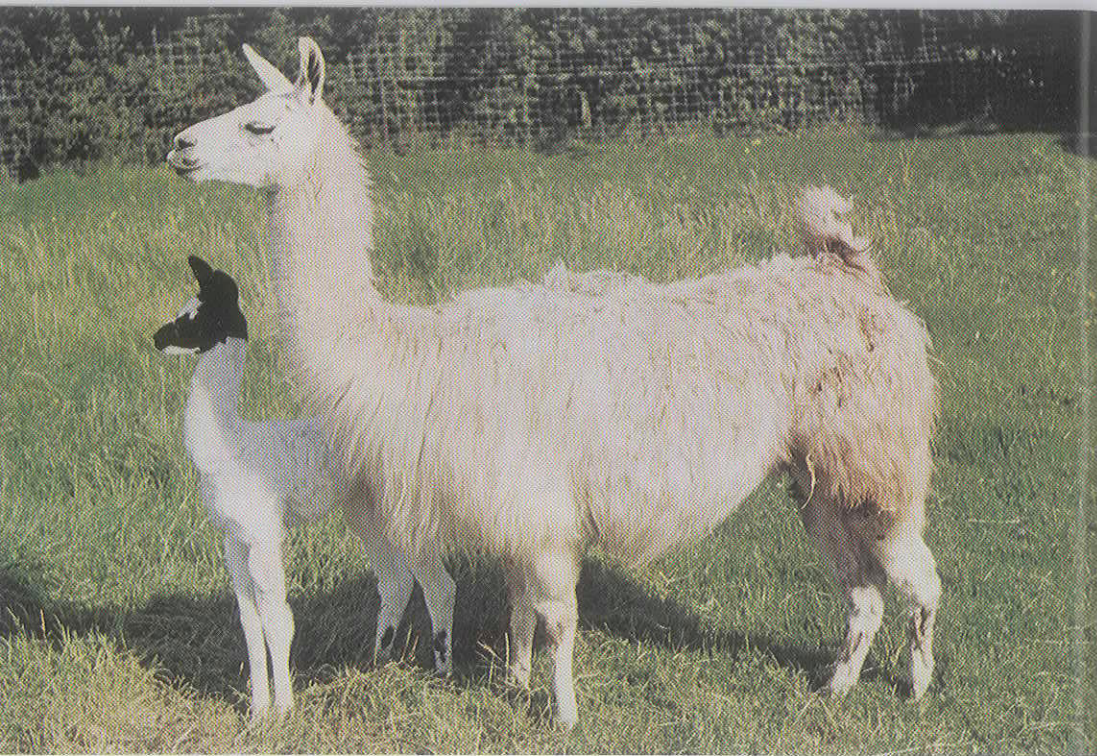
Arabian Gazelle



Red Kangaroo

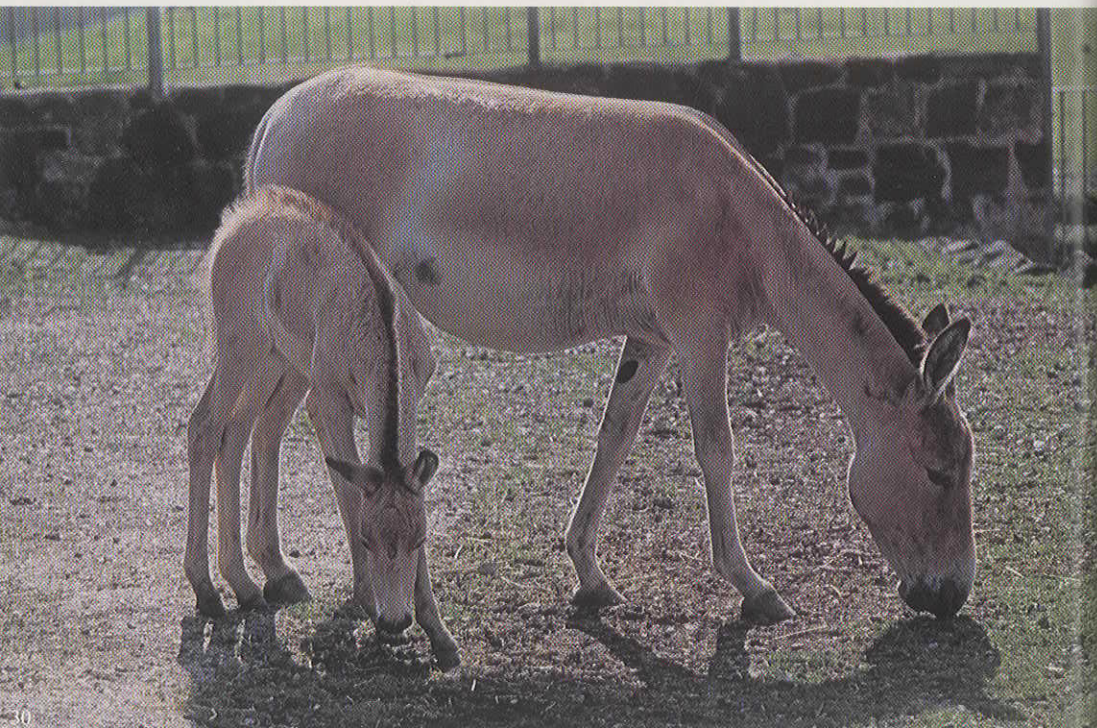


Pere David's Deer

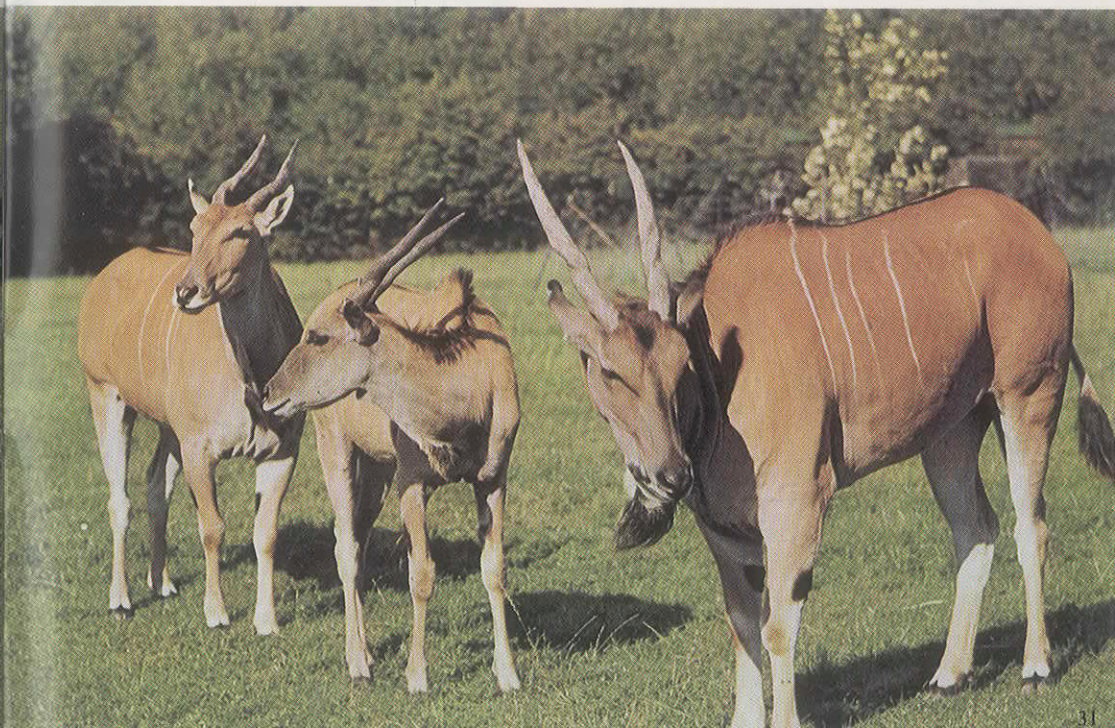


Llama

Onager



Eland



American Bison





Sea Lions



Polar Bears

Many interesting species are exhibited at Chester Zoo including the following:

GORILLA
ORANG-UTAN
RHINOCEROS
ECHIDNA
ARABIAN GAZELLE
PÈRE DAVID'S DEER
SIBERIAN TIGER
PRZEWALSKI'S HORSE
ANDEAN CONDOR
ROTHSCHILD'S MYNAH
HAWAIIAN GOOSE
TUATARA
SOLOMON ISLAND SKINK
AFRICAN SPURRED TORTOISE

Chester Zoo publishes its own magazine, *Chester Zoo News*, which has appeared regularly since the Zoo was first founded. Copies can be purchased from the Souvenir Shop or Kiosks, or posted to subscribers. Details can be obtained from the Chester Zoo News Office. Membership details can be obtained from the Membership Office.



Photography by P. A. Wait, K. W. Green, G. F. Williams, M. F. Coupe, R. Williams.
Designed and printed by Beric Tempest & Co. Ltd., St. Ives, Cornwall.