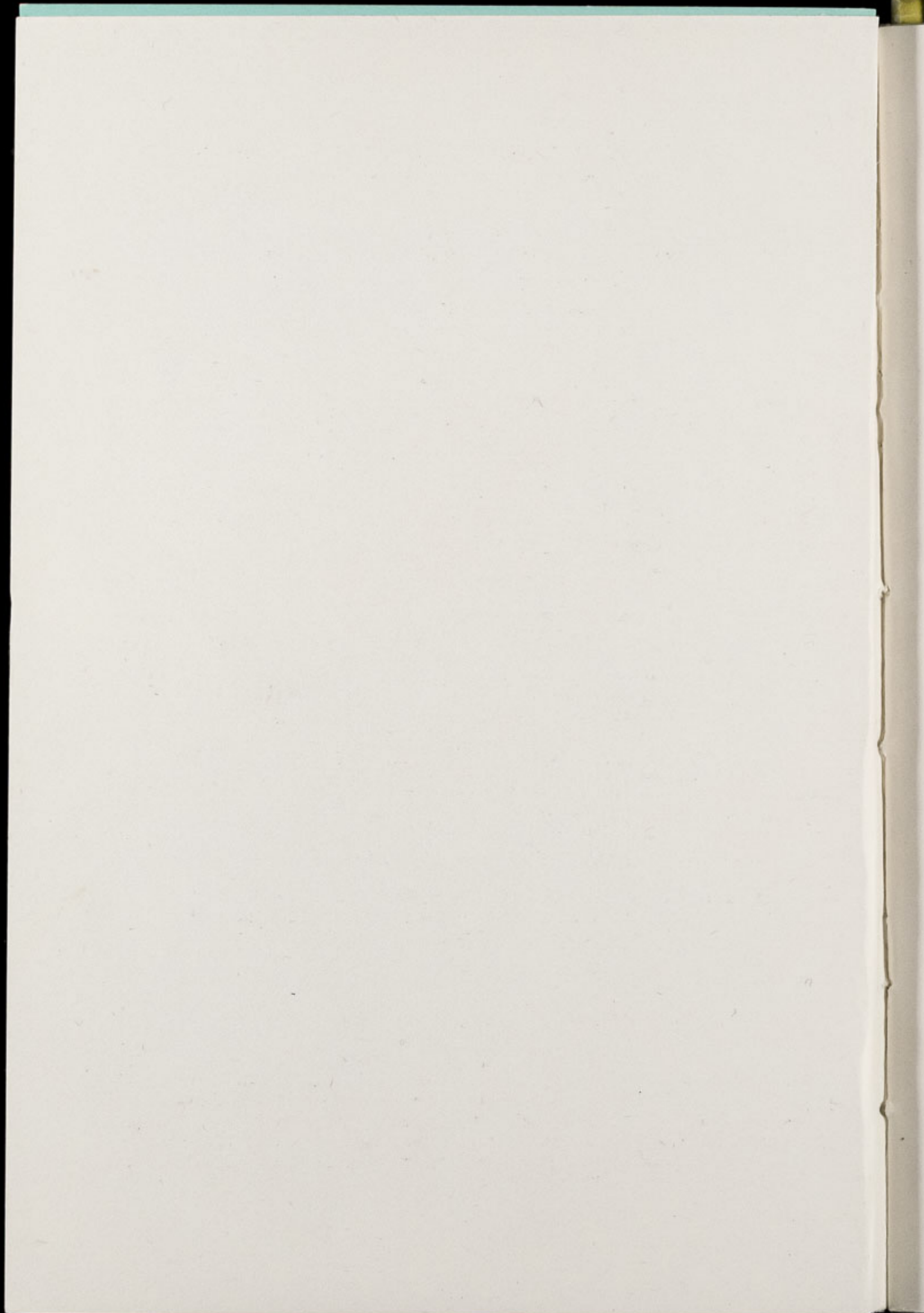


THE NORTH OF ENGLAND ZOOLOGICAL SOCIETY

Annual Report 1983





THE NORTH OF ENGLAND ZOOLOGICAL SOCIETY
Zoological Gardens, Upton-by-Chester

NOTICE OF
THE 50th ANNUAL GENERAL MEETING
To be held on Saturday, 26th May, 1984, at 3.30 p.m.
at the Russell Allen Lecture Hall

AGENDA

1. Reading of the Minutes of the Annual General Meeting held on 21st May, 1983.
2. Presentation of Accounts and Balance Sheet and Auditors' Report.
3. Discussion of Auditors' Report.
4. Presentation of Council's Report.
5. Discussion of Council's Report.
6. Appointment of Auditors.
7. Appointment of Scrutineers and Ballot for election of members of the Council.
8. Report of Scrutineers on the result of the Ballot.

MEMBERS OF COUNCIL — 1983

- *PROFESSOR J. O. L. KING, Ph.D., M.V.Sc., B.Sc.(Agric.), F.R.C.V.S., F.I.Biol.
(Chairman)
- *Dr. J. R. BAKER, Ph.D., B.V.Sc., M.R.C.V.S.
A. J. BLAND Esq., Dipl.Arch., R.I.B.A.
F. S. CARSON Esq., M.C., B.A.(Cantab.) *(member until June 1983)*
B. H. COLES Esq., B.V.Sc., M.R.C.V.S.
H. D. COOPER Esq., F.I.M., F.S.F., F.I.F.F., Cert.A.I.B.
R. HEATON Esq., B.Ed., Cert.Ed., F.G.S., F.R.G.S.
G. B. HIBBERT Esq.,
MRS. S. IRONMONGER, B.Sc., M.I.Biol.
MRS. B. H. IRVINE,
PROFESSOR D. H. MOLYNEUX, M.A., Ph.D., F.I.Biol.
- *F. MOSFORD Esq.,
R. P. OWEN Esq., A.R.I.C.S., Rat.Dip. *(member until May 1984)*
G. R. PRYOR Esq., C.Eng., Hon.M.I.Prod.E., F.B.I.M. *(Vice-Chairman)*
L. C. YOUNG Esq., C.B.E., B.Sc.(Econ.)

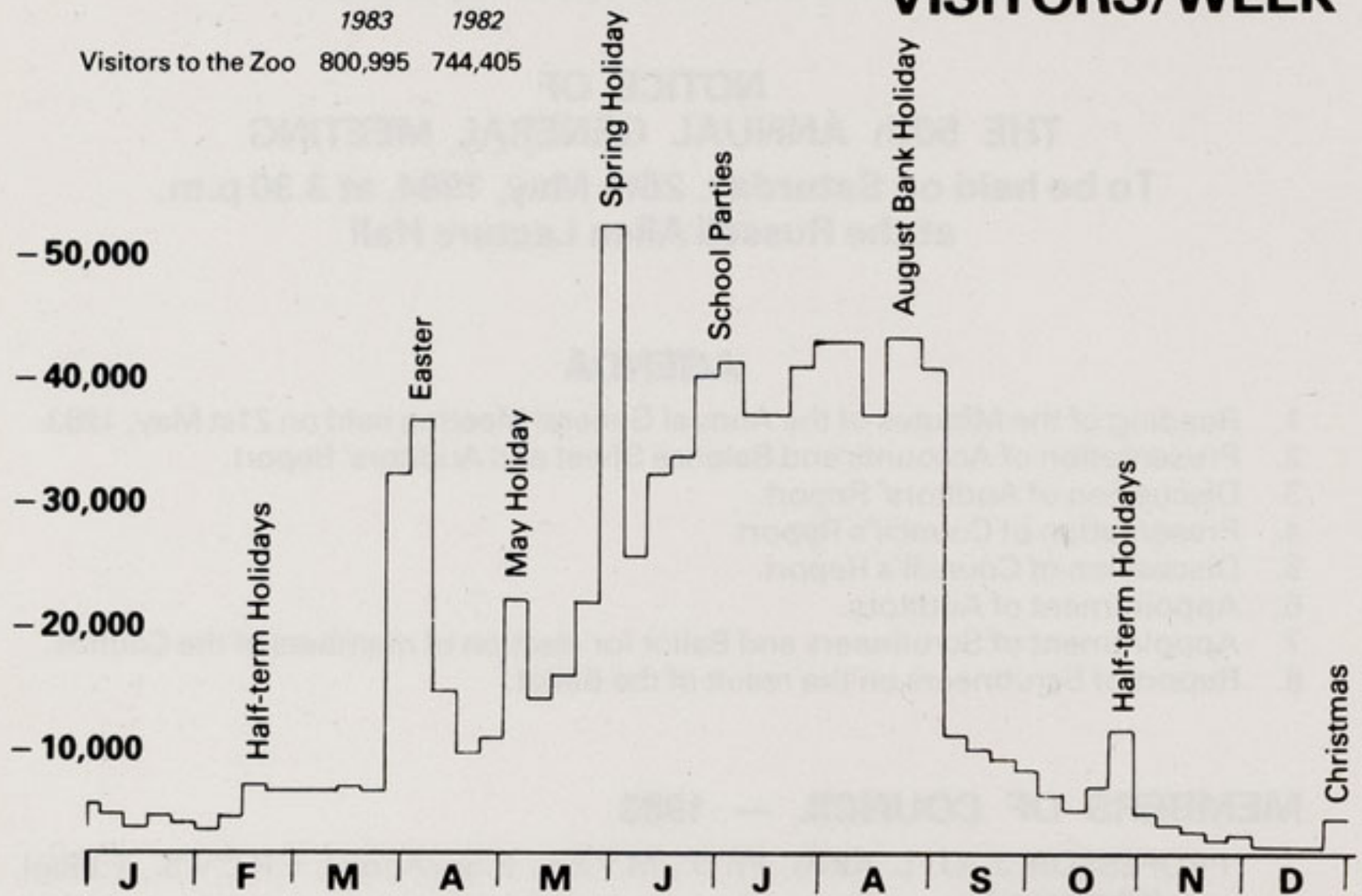
DIRECTOR

Dr. M. R. BRAMBELL, M.A., Ph.D., Vet.M.B., M.R.C.V.S.

There are five vacancies on the Council. Retiring Members who are offering themselves for re-election are indicated thus *. If any Patron or fully paid-up Annual Member wishes to be nominated for election to Council, she or he must be nominated in writing by seven Patrons or fully paid-up Annual Members, the nomination to be in the hands of the Secretary not later than 14 days before the Annual General Meeting (i.e. by noon Saturday, 12th May, 1984).

1983

VISITORS/WEEK



Dr. M. R. Brambell (right) & M. F. Coupe (left) welcoming the 800,000th visitors and presenting them with a Cheshire Cheese

Courtesy of Cliff Brett, Mel Grundy Agency

ANNUAL REPORT 1983

The forty ninth year of the Society's involvement in Chester Zoo showed a significant change in its recent fortunes. After several years of adverse results the year ended with a surplus of £14,984 on current trading. There was a 3.4% increase in the number of visitors with 800,995 people coming to the Zoo.

During the last few years enormous efforts have been made to make the Zoo more efficient. In 1981 it would have required 895,000 visitors to meet running costs. In 1982 this figure had been reduced to 865,000 visitors. In 1983 the running costs were met when 785,000 people had visited the Zoo. This has only been possible by the enthusiasm and hard work of the staff.

In 1983 the City of Chester granted the Zoo full discretionary relief of rates. This has demonstrated how closely interrelated the City and its great Zoo have become. Similarly, the County of Cheshire further continued its support in kind by seconding a senior teacher to exploit the educational potential of the Zoo, a move which will make it possible for a much fuller involvement of the Zoo in the teaching of biology in Cheshire and the surrounding area. The Society is deeply grateful to the City and to the County for their support.

Perhaps 1983 will be remembered as the year when British Zoos began to take a professional look at marketing themselves. The English Tourist Board study group, which included the Director of Chester Zoo, published its report 'Britain's Zoos. Marketing & Presentation — The Way Forward To Viability'. The National Federation of British Zoological Gardens and Aquaria established its Marketing Committee to promote co-operation efforts to attract more visitors. Chester Zoo created the new post of Head of Marketing in order to present an integrated programme of internal and external marketing. Also the launching during 1983 within the City of Chester of the Chester Marketing Bureau will be seen as significant in spreading abroad the good name of the City and its Zoo.

The research leading up to the English Tourist Board's Report highlighted the importance of younger children in the make-up of groups visiting zoos. Zoos are very attractive to families and other groups if the youngest member of the group is under twelve, whilst they tend to lose out to competition from other forms of attraction if the youngest is a teenager. What had not been fully recognised were the enormous changes that have been happening in the population of the country. In 1970 in England and Wales, there were ten million children aged under 12 years. Now there are only eight million. Since 1970 the numbers of visitors of all ages to Chester Zoo have dropped from a million a year to eight hundred thousand. Indeed there is evidence that the local population of young children has been falling at a faster rate than the drop over the same period in the number of visitors to the Zoo. This downward trend in the number of children in the population has now stopped and for the next few years there is likely to be a modest increase.

The Council has reviewed the advantages of its continued ownership of its outlying domestic properties and has decided that the resources needed to maintain them in good order do not justify the retention of more than those in the immediate vicinity of the Zoo itself. Consequently, during the year five properties were sold, releasing the money for improvement and development of the Zoo itself and the proceeds used to improve the Society's financial position.

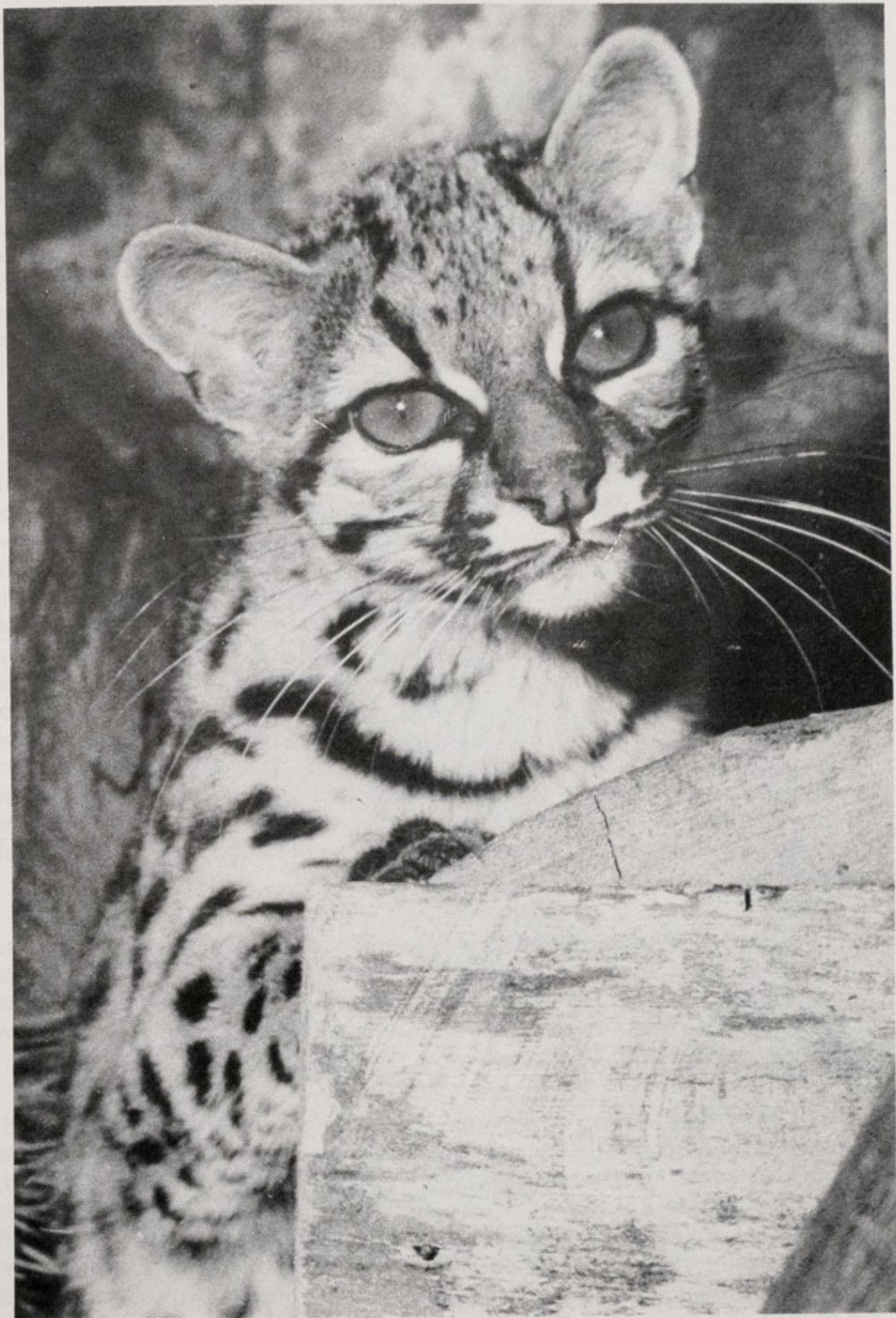
The Animal Collection

Many aspects of the animal collection are in good order and need only marginal improvements to maintain standards. Nevertheless, animal management is a developing science and as standards change what was once acceptable becomes unsatisfactory unless resources are used to keep enclosures and keeping methods up to date. The dilemma facing the Zoo over recent years has been that its infra-structure had become inadequate to allow for improvements to the exhibition to take place on a large scale. Many of our species groups are now in need of urgent revision. New stock is needed to revitalise tired gene pools. Better paddock surfaces are needed for species adapted to drier environments. Many of the houses need improved insulation and better management facilities to offset wear and tear and so ensure that the animals can be kept within their natural adaptive ranges. This need is particularly true of the larger species of mammals and the more specialised species of birds. Much more effort will have to be put into these areas in the next few years if the Zoo is to continue as a leading national and international zoo.

In 1983 the collection held its own with minor advances on the small mammal front with the improvements to the Small Mammal House, to be completed in 1984, and in the Monkey Collection, and a general strengthening of the make-up of species groups throughout the collection.

Our successes included the breeding of two more South American fresh-water stingrays *Potamotrygon species*. Eight out of nine blue-tongued skinks born in the year survived. The birth of a Sumatran orang-utan could be the first second-generation breeding of the subspecies in this country and perhaps in the world. Eleven slender-billed parrakeets and two blue-eyed cockatoos were notable as were the continued successes with breeding margay and Geoffroy's cats.

There were some disasters especially when we lost the young male polar bear. After many years of very successful management and breeding of polar bears in the Polar Bear Pool, it is ironic that we have, since 1980, lost two very promising animals in separate drowning incidents and have had to withdraw the only remaining female from exhibition in an attempt to overcome her unexplained skin condition coupled with behavioural problems which probably arose at the time she was in Canada. However



Margay
Courtesy of K. W. Green, A.R.P.S.

successful a group is in any one zoo, there is no doubt that from time to time a change in stock by recruiting from surpluses bred in other zoos is required. We are investigating how this can best be done so that polar bears are once again breeding at Chester Zoo.

Inter-zoo co-operation has reached a remarkable stage in Britain and we are working to ensure that it can continue as a management tool. With the loss of the wild as the normal source of zoo stock (a development we can only applaud), zoos simply cannot continue to run themselves in isolation from each other. During 1983 agreements with other zoos, mostly co-ordinated by the ad hoc Joint Management Committee of Directors and Curators of the main Society zoos in these islands, resulted in a further redistribution of Californian sealions, Grevy zebras, ostrich, lion-tailed macaques, red kangaroo and gaur.

The attempt to mate Bristol Zoo's ageing female black rhinoceros with Paignton's much younger male, by bringing them both to Chester, proved fruitless. Though mating had been observed the female, who became acutely ill and had to be humanely destroyed at about the time she might have been expected to give birth (pregnancy diagnosis in rhinoceroses is very difficult) was found to be completely barren. This was a disappointment, though from the outset it had been realised by all involved that the chances of success with this particular female were very slender. Black rhinoceroses are a species which may only survive in captivity, such are the problems of protecting them in the wild, and there is a great effort going on in Britain and elsewhere to husband the very slender Zoo population of these animals into a stable group. We are in a position to provide housing for several pairs, so as the number of youngsters born in other zoos grows, we can provide space to keep them from being dispersed as single animals as happened all too often in the past.

The work to redevelop the existing enclosures in the Cat House was further advanced, many of the smaller enclosures being combined to make larger spaces. The old Lion House was demolished and a new Lion House was begun. Once this is completed there is a need to provide similar new accommodation for the tigers.

The Great Apes are a group of animals under particular threat in the wild, but which can respond well to being managed in the Zoo. Our female Western Lowland gorilla has given birth to a fourth baby at Bristol Zoo and, although her other three died while very young from various causes, at the time this report is being written it looks as if she is going to rear the fourth. It appears that neither of our male gorillas are fertile. Our orang-utans have been very satisfactory. Two Bornean orang-utan females went to London to be mated and both gave birth after their return. However, it later became obvious that one of these must have been pregnant before she left our Zoo!



Orang-utan with baby
Courtesy of N. G. Hillier, Zoo Staff

Our chimpanzees, after a period of poor breeding, have produced a baby which the mother is rearing, with two others pregnant. Those zoos in Britain which keep Great Apes have been co-operating since 1976 in the Great Ape Breeding Panel, which in 1983 has produced a series of recommendations on how the animals can best be deployed to make the most of the breeding potential of the stock. Chester Zoo has wholeheartedly committed itself to the success of this venture. If all the zoos involved do so without reservation we have the prospect of truly viable stocks of all three of the main species.

Gardens

The Society is committed to keeping the Zoo's grounds and gardens as attractive as ever and this was reflected in the high standard of the floral displays during the year. However, apart from laying out a new shrubbery on either side of the new causeway which replaced the old Cafe Bridge and a new lawn beside the Water Bus Terminus, the gardens were managed in much the same way as last year. However, 200 gladioli of the new variety, City of Chester, were presented by Dobie's of Llangollen.

The new roof in the Monkey House has had the combined effect of increasing the temperature with improved insulation and greatly increasing the amount of light. The bougainvillea responded by coming into strong bloom as the work progressed along the building. Our hope is that there will be blooms again in the Monkey House comparable with the early days of the building.

The Tropical House Roof was also insulated to reduce energy loss, but in this case it was necessary to reduce the light penetration at least until we are able to reglaze the gable ends. It remains to be seen if the rise in temperature will more than compensate for the marginal reduction in light. Seven Norfolk Island Pines presented by the West Cheshire Hospital have been planted in the Tropical House.

In the summer the greenhouses have spare capacity and this year over one tonne of tomatoes were delivered to the catering and animal feeding stores, as well as several hundred pounds worth of plants sent for sale in the Garden Shop.

Public Services

A start has been made to the improvement of the main car parks, and this will continue in future years. There has been a tendency to ignore the importance of this area on the recollections of visitors of their day at the Zoo, yet first impressions are important and it is right that the entrance to the Zoo should be much more attractive than it has been.



Spring Scene — Daffodil Islands
Courtesy of K. W. Green, A.R.P.S.



Summer Bedding Display
Courtesy of K. W. Green, A.R.P.S.

Within the Zoo the relabelling of the exhibits has reached the stage when almost every species has a pictorial label on the enclosure. This has been helped by the generous support of the Granada Foundation. It is our intention to start the second phase of the relabelling soon, so that there will be a succinct but stimulating supplementary label highlighting points of particular interest and significance of the animals on exhibit.

WORKS DEPARTMENT

Energy

Real savings have been possible in 1983, through the programme of insulating roofs (Monkey House and Tropical House), replacing faulty roofs (Rhinoceros House using salvaged material from the Monkey House), monitoring usage at the point of local control by installing meters throughout the Zoo and by an aggressive stance on agreeing energy prices. In designing future exhibits and in deciding on where to house particular species, much more account will be taken of temperature requirements to prevent wasteful use of energy.

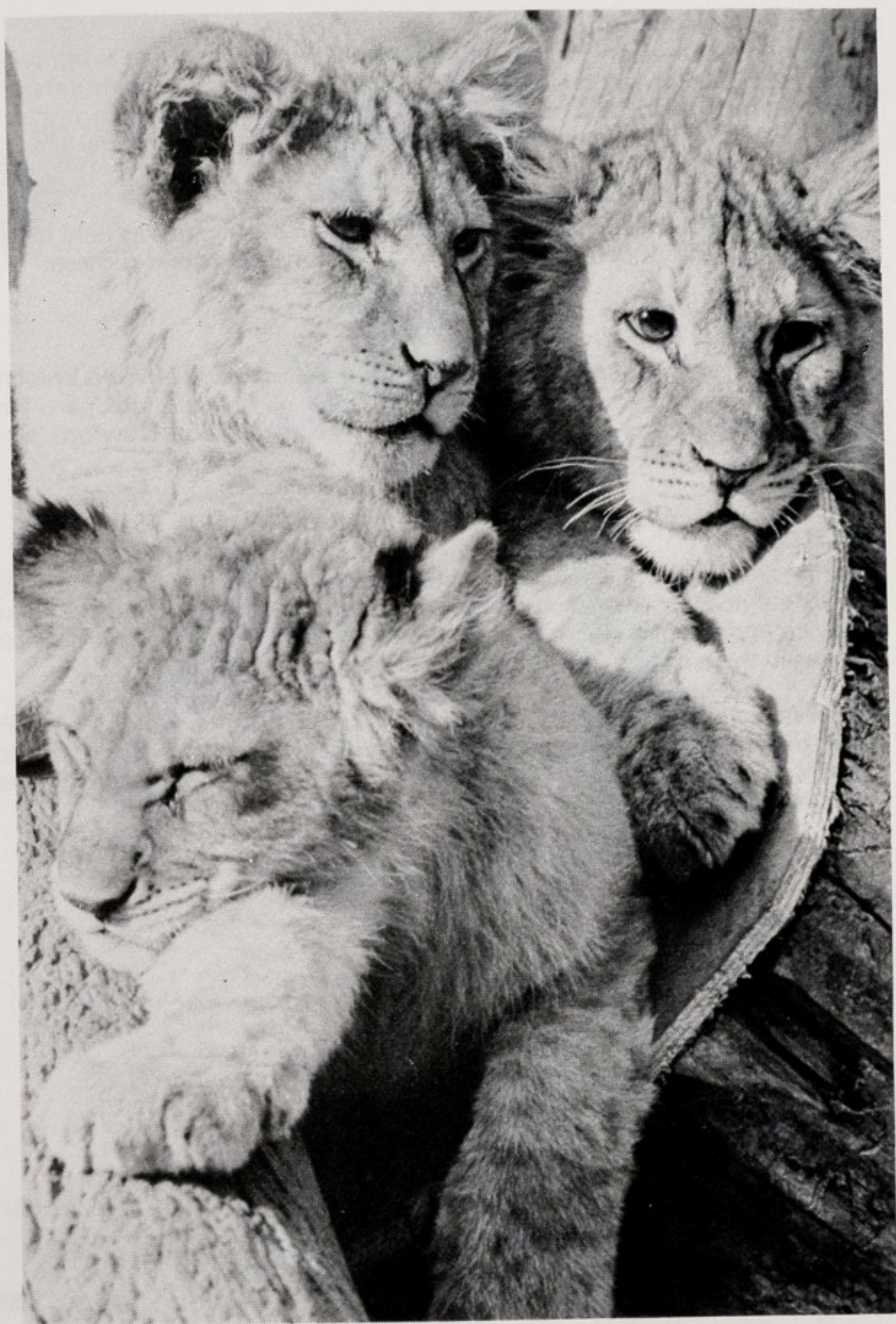
The Manpower Services Youth Training Scheme has been extended and enlarged and we are glad to be able to give fifteen youths the chance of real work experience and training. There is always the risk that such schemes are regarded simply as sources of cheap labour. We do not feel this to be the case with our scheme where great efforts have been made by the Supervisors to ensure a full and rounded training. Nevertheless, the scheme has made it possible for the Zoo to start on its perimeter fence sooner than it could have done otherwise and a considerable stretch of fencing facing the North Car Park has been completed.

Education

During the summer Chester County Council was able to second to the Zoo Miss Brenda Norgain as a Senior Officer in Education with the aim of providing stronger links between our own Education Department and the schools in the North West. We were very grateful to the County for this gesture, especially when, later in the year, our own Education Officer, Miss Bella Neate was appointed to Paignton Zoo to take up a post in Marketing and Miss Norgain was able to take on the additional duties of organising the Zoo's Education Programme.

Membership

Several very successful Members meetings were held in the year as well as a series of very popular outings organised for the Junior Members. These outings were made possible by the generous volunteer effort of members of staff and Society Members.



Lion Cubs
Courtesy of Cliff Brett, Mel Grundy Agency

North West Zoologists Dinner

During May the second dinner for professional zoologists in the North West was held. The Zoo's potential as a focal point for zoologists in many different kinds of institutions and occupations is becoming more widely recognised and it is hoped that the dinner will continue to be held on an annual basis.

Summer Music Festival

As part of the Chester Summer Music Festival, a concert was held in the Marquee for children by Toni and David Arthur. It was a great success.

World Wildlife Fund Walk

In October, Mr. Robert Hardy came to the Zoo to lead the World Wildlife Fund's sponsored walk in which many hundreds of people took part. The Mayor and Mayoress of Chester, Councillor and Mrs. John Crawford, also visited to encourage the sponsored walkers.

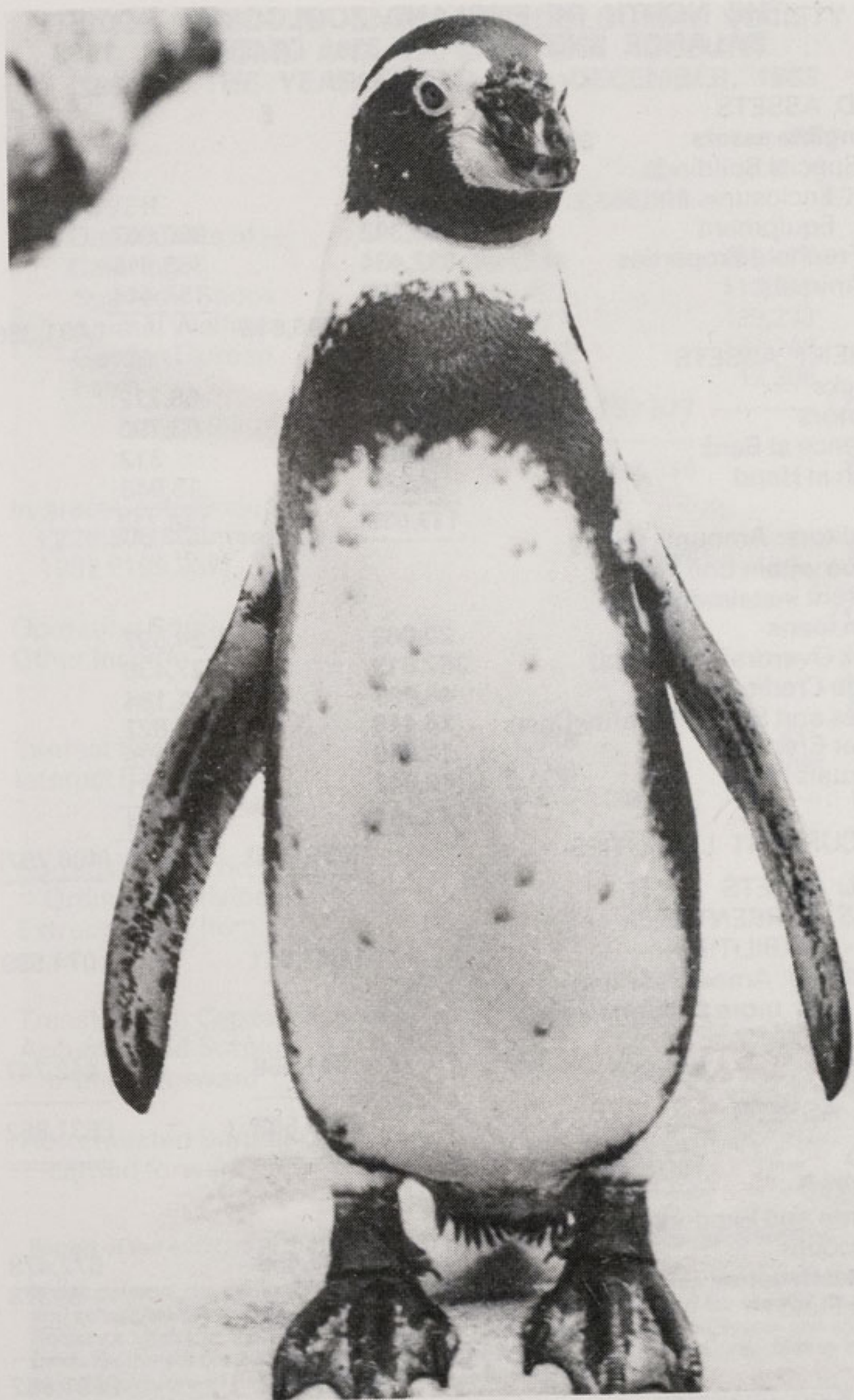
Staff Retiring

During the year Mr. Derek Lindop retired from the Maintenance staff after 24 years service, Mr. Tom Done retired from the Gardens staff after 15 years service and Mr. Tom Prentice from the Keeper Staff after 10 years service. We wish them a long and happy retirement.

The Society wishes to congratulate Mr. F. W. Blythe and Mr. C. P. Braithwaite who both completed twenty five years service with the Zoo and join Mr. G. F. Williams and Mr. L. Nield in having worked at the Zoo for over half its history.

THE MEMBERSHIP OF THE NORTH OF ENGLAND ZOOLOGICAL SOCIETY AS AT 31st DECEMBER, 1983

Life Members	185	
Honorary Members	7	
Annual Members	361	
Members with over 25 years Membership who are over pensionable age	9	562
	<hr/>	
Associate Members	172	
Junior Members	158	330
	<hr/>	<hr/>
TOTAL (all categories)		892



Humboldt's Penguin
Courtesy of K. W. Green, A.R.P.S.

**THE NORTH OF ENGLAND ZOOLOGICAL SOCIETY
BALANCE SHEET AS AT 31st DECEMBER, 1983**

		1983		1982
	Notes	£	£	£
FIXED ASSETS				
Tangible assets:	9			
Special Buildings, Enclosures and Equipment		963,382		960,607
Freehold Properties		332,434		363,315
Animals		<u>101,000</u>		<u>157,444</u>
		1,396,816		1,481,366
CURRENT ASSETS				
Stocks	10	54,308		68,772
Debtors	11	52,326		63,790
Balance at Bank		5,867		312
Cash in Hand		4,538		13,843
		<u>117,039</u>		<u>146,717</u>
Creditors: Amounts falling due within one year				
Current Instalments due on loans		20,062		24,597
Bank Overdraft (secured)		357,619		427,436
Trade Creditors		48,993		61,184
Taxes and Social Security Costs		24,419		24,827
Other Creditors		10,359		8,929
Accruals		<u>10,842</u>		<u>6,511</u>
		472,294		553,484
NET CURRENT LIABILITIES		(355,255)		(406,767)
TOTAL ASSETS				
LESS CURRENT				
LIABILITIES		1,041,561		1,074,599
Creditors: Amounts falling due after more than one year				
Loan	12	<u>341,058</u>		<u>442,747</u>
NET ASSETS		£700,503		£631,852
RESERVES				
Income and Expenditure Account		692,458		572,479
Capital Reserve		—		59373
Trust Fund	13	<u>8,045</u>		—
		£700,503		£631,852
J. O. L. King, <i>Chairman</i>		<u><u>£700,503</u></u>		<u><u>£631,852</u></u>
M. R. Brambell, <i>Director</i>				

**THE NORTH OF ENGLAND ZOOLOGICAL SOCIETY
INCOME AND EXPENDITURE ACCOUNT
FOR THE YEAR ENDED 31st DECEMBER, 1983**

	Notes	1983		1982	
	2	£	£	£	£
TURNOVER			2,086,113		1,779,174
Less Direct Costs of:—					
Catering		394,210		389,477	
Souvenir Shops		143,407		112,115	
Animal Welfare		413,777		429,233	
Garden Upkeep		136,183		142,248	
Farm		—		12,306	
			1,087,577		1,085,379
			998,536		693,795
Indirect Costs (including £229,305 Maintenance— 1982 £199,957)			905,445		811,544
Operating Surplus	3		93,091		(117,749)
Other Income	5		20,751		30,096
			113,842		(87,653)
Interest Receivable	6	1,918		415	
Interest Payable	7	(100,776)		(99,406)	
			(98,858)		(98,991)
Surplus/Deficit on Ordinary Activities			14,984		(186,644)
Extraordinary Items	8		45,622		27,604
			60,606		(159,040)
Transfer from Capital Reserve			59,373		—
Accumulated Surplus brought forward			572,479		731,519
Accumulated Surplus carried forward			£692,458		£572,479

Report of the Auditors to the Members of the North of England Zoological Society

In our opinion, the annexed Balance Sheet, Income and Expenditure Account and related notes and schedules give, under the historical cost convention, a true and fair view of the state of the Society's affairs at the 31st December, 1983, and of the surplus and source and application of funds for the year ended on that date and comply with the Companies Acts, 1948 to 1981 in so far as the provisions of those Acts apply to these financial statements.

31 Wellington Road
Nantwich

AFFORD, BOND AND CO.
Chartered Accountants
12th March, 1984

**THE NORTH OF ENGLAND ZOOLOGICAL SOCIETY
STATEMENT OF SOURCE AND APPLICATION OF FUNDS
FOR THE YEAR ENDED 31st DECEMBER, 1983**

	1983	£	1982	£
	£	£	£	£
SOURCE OF FUNDS				
Surplus for the year on ordinary activities		14,984		—
Adjustment for items not involving the movement of funds				
Depreciation	78,308		75,324	
Loss on sale of Fixed Assets	6		—	
	<u> </u>	78,314	<u> </u>	75,324
FUNDS FROM OTHER SOURCES				
Sale of Fixed Assets	161,468		44,378	
Trust Fund	8,045		—	
Conservation Fund	—		482	
Penguin Appeal	—		3	
	<u> </u>	169,513	<u> </u>	44,863
		<u> </u>		<u> </u>
APPLICATION OF FUNDS		262,811		120,187
Deficit for the year on ordinary activities	—		186,644	
Purchase of Fixed Assets	109,610		151,728	
	<u> </u>	109,610	<u> </u>	338,372
		<u> </u>		<u> </u>
		<u>£153,201</u>		<u>£(218,185)</u>
MOVEMENT IN WORKING CAPITAL				
(Decrease) in Stock	(14,464)		(9,584)	
(Decrease)/Increase in Debtors	(11,464)		41,125	
Decrease/(Increase) in Creditors	6,838		(27,562)	
Decrease in Bank Loan	101,689		37,253	
	<u> </u>	82,599	<u> </u>	41,232
MOVEMENT IN LIQUID FUNDS				
(Decrease)/Increase in Cash at Bank and in Hand	(3,750)		8,288	
Decrease in current instalments due on Loans	4,535		—	
Decrease/(Increase) in Bank Overdraft	69,817		(267,705)	
	<u> </u>	70,602	<u> </u>	(259,417)
		<u> </u>		<u> </u>
		<u>£153,201</u>		<u>£(218,185)</u>

NOTES TO THE ACCOUNTS FOR THE YEAR ENDED 31st DECEMBER, 1983

1. ACCOUNTING POLICIES

There have been no changes in the accounting policies during the year, other than the writing down of Animals as noted below.

Basis of Accounting

The accounts have been prepared under the historical cost convention and for the first time are prepared in accordance with the Companies Acts 1948 to 1981. Comparative figures have been restated to comply with the new Acts.

Fixed Assets:

Properties — In accordance with practice adopted in previous years no depreciation has been provided on freehold land or properties. It is the Society's policy to maintain its property in good condition, prolonging its useful life and making any depreciation provision immaterial. Repairs and maintenance costs are charged against income in the year as they are incurred. The Council is of the opinion that the market value of the Society's land and buildings is in excess of the book values.

Special Buildings, Enclosures and Equipment depreciation is provided at rates varying between 2% and 20% per annum estimated to write off each asset over the term of its useful life. The rates and method of depreciation are consistent with those used, in previous years.

Animals — No valuation is made of the animal collection at the end of each year. Purchases and sales appear in the accounts in the year in which they arise.

The amount of £48,685 has been written off this year to bring the net book value at 31st December 1983 to £101,000. It is intended to write off a further £20,000 each year for the next five years to bring the net book value at 31st December 1988 to £1,000.

Stock:

Valued on a basis consistent with that used in previous years at the lower of cost or net realisable value.

Pensions

The Society operates a pension scheme covering the majority of employees, and contributions are charged in the accounts as payments are made. Contributions by employees and by the Society are held in trustee-administered funds completely independent of the Society's finances.

2. TURNOVER

Turnover represents admission charges, goods sold and services provided, net of V.A.T.

The Turnover is attributable as follows:—

	1983 £	1982 £
Admission Charges	1,269,660	1,064,557
Catering Receipts	514,714	465,876
Souvenir Receipts	207,552	174,007
Motor Boat Trips	34,266	27,977
Zoo Guides and News	49,396	32,223
Farm	—	6,042
Members Subscription and Entrance Fees	5,354	4,432
Sundry Income	5,171	4,060
	<u>£2,086,113</u>	<u>£1,779,174</u>

3. OPERATING SURPLUS

This is after charging:—

	£	£
Auditor's Remuneration	2,000	1,750
Depreciation (other than Animals)	78,308	75,324
Loss on Sale of Fixed Assets	6	—
Hire of Equipment	5,651	3,429
	<u> </u>	<u> </u>

4. STAFF COSTS

	£	£
Wages and Salaries	803,997	795,423
Social Security Costs	80,663	79,570
Other Pension Costs	19,463	15,204
	<u>£904,123</u>	<u>£890,197</u>

The average number of employees during the last year was made up as follows:—

	No.	No.
Administration	40	52
Maintenance	28	29
Gardens	24	23
Keeping	45	48
Catering	27	28
Souvenir Shops	7	6
	<u>171</u>	<u>186</u>

	1983	1982
5. OTHER INCOME	£	£
Donations	—	3,861
Zoo Property Rents	13,813	10,173
Zoo Farm Rents (net)	6,938	16,062
	<u>£20,751</u>	<u>£30,096</u>
	<u><u>£20,751</u></u>	<u><u>£30,096</u></u>
6. INTEREST RECEIVABLE	£	£
Bank Deposit Interest	1,655	415
Interest charged on Employee Loans	263	—
	<u>£1,918</u>	<u>£415</u>
	<u><u>£1,918</u></u>	<u><u>£415</u></u>
7. INTEREST PAYABLE	£	£
Bank	48,532	35,426
Other Loans not wholly repayable within five years	52,244	63,980
	<u>£100,776</u>	<u>£99,406</u>
	<u><u>£100,776</u></u>	<u><u>£99,406</u></u>
8. EXTRAORDINARY ITEMS		
Extraordinary Income:		
Profit on Sale of Property	94,307	27,604
Extraordinary Charge:		
Amount Written Off Stock of Animals	(48,685)	—
	<u>£45,622</u>	<u>£27,604</u>
	<u><u>£45,622</u></u>	<u><u>£27,604</u></u>

9. TANGIBLE FIXED ASSETS

	Freehold Property	Building & Enclosures	Machin- ery & Equip	Animals	Total
Cost	363,315	1,393,894	333,184	157,444	2,247,837
Additions	16,495	44,650	38,164	10,301	109,610
Disposals	(47,376)	—	(3,397)	(18,060)	(68,833)
	<u>£332,434</u>	<u>£1,438,544</u>	<u>£367,951</u>	<u>£149,685</u>	<u>£2,288,614</u>
Depreciation Provided	—	610,782	155,689	—	766,471
during year	—	51,576	26,732	48,685	126,993
Disposals	—	—	(1,666)	—	(1,666)
	<u>£ —</u>	<u>£662,358</u>	<u>£180,755</u>	<u>£48,685</u>	<u>£891,798</u>
Net book value at 31.12.83	<u>£332,434</u>	<u>£776,186</u>	<u>£187,196</u>	<u>£101,000</u>	<u>£1,396,816</u>
Net book value at 31.12.82	<u>£363,315</u>	<u>£783,112</u>	<u>£177,495</u>	<u>£157,444</u>	<u>£1,481,366</u>

	1983 £	1982 £
10. STOCKS		
Goods for Resale	35,411	38,112
Consumables	18,897	30,660
	<u>£54,308</u>	<u>£68,772</u>

	£	£
11. DEBTORS		
Trade Debtors	5,230	3,067
Other Debtors	42,894	43,867
Prepayments and Accrued Income	4,202	16,856
	<u>£52,326</u>	<u>£63,790</u>

	1983	1982
	£	£
12. LOAN		
Amounts Repayable Within Five Years	80,249	98,388
Amounts Repayable After Five Years	260,809	344,359
	<u>£341,058</u>	<u>£442,747</u>

The current portion of the loan amounting to £20062 (£24597 1982) is shown in current liabilities.

The loan is secured on the freehold property.

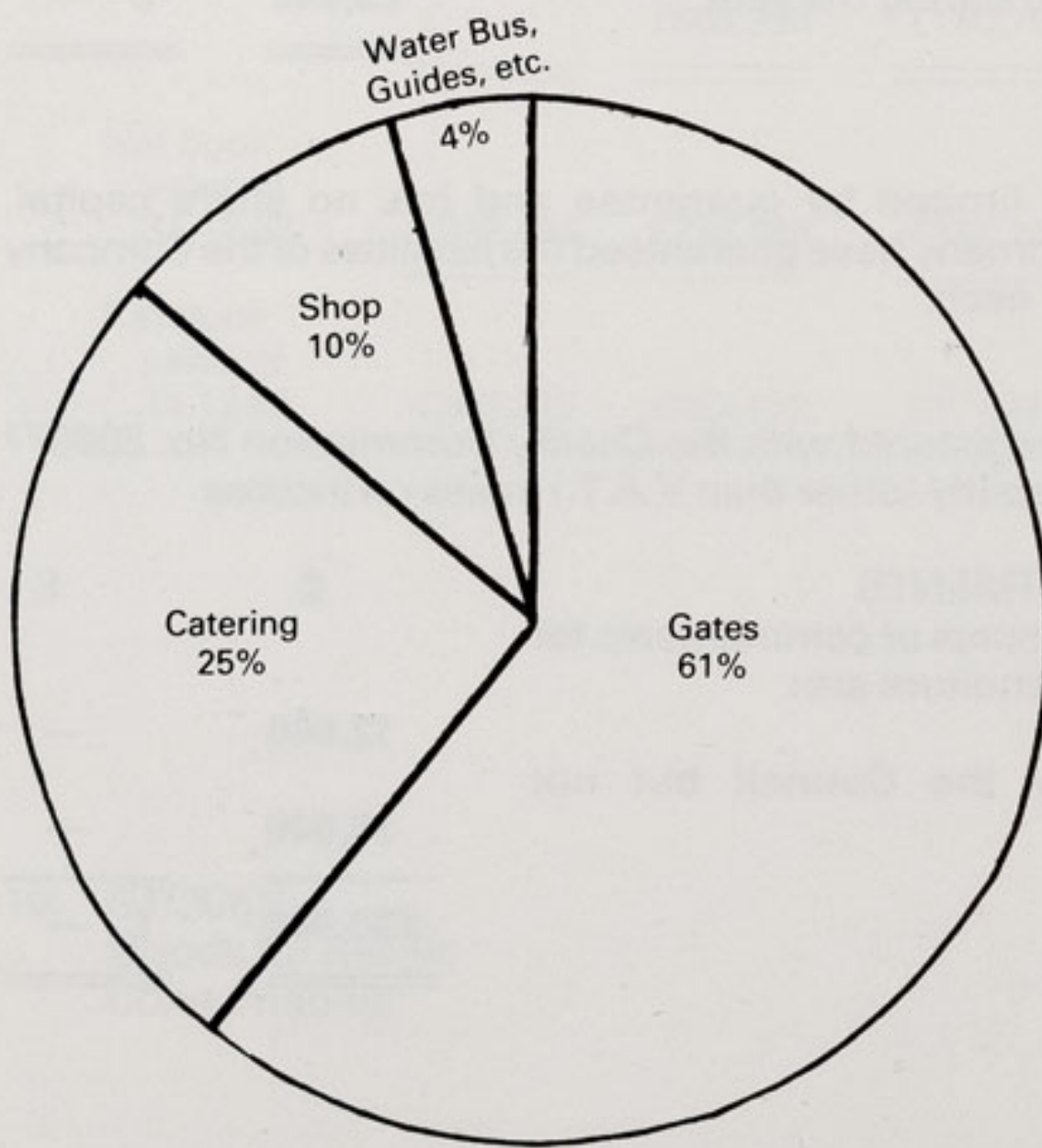
13. TRUST FUND		
Amounts Received during the year	£8,045	£ —
	<u>£8,045</u>	<u>£ —</u>

14. SHARE CAPITAL
The Company is limited by guarantee and has no share capital. Members of the Company have guaranteed the liabilities of the Company to the extent of £1 each.

15. STATUS
The Company is registered with the Charity Commission No. 306077 and no taxation liability (other than V.A.T.) arises on income.

	£	£
16. CAPITAL COMMITMENTS		
The estimated amounts of commitments for future capital expenditure are:		
Under contracts	12,000	—
Authorised by the Council but not contracted	38,000	—
	<u>£50,000</u>	<u>£ —</u>

INCOME



From Visitors
£2.39 million
including
£0.30 million
VAT

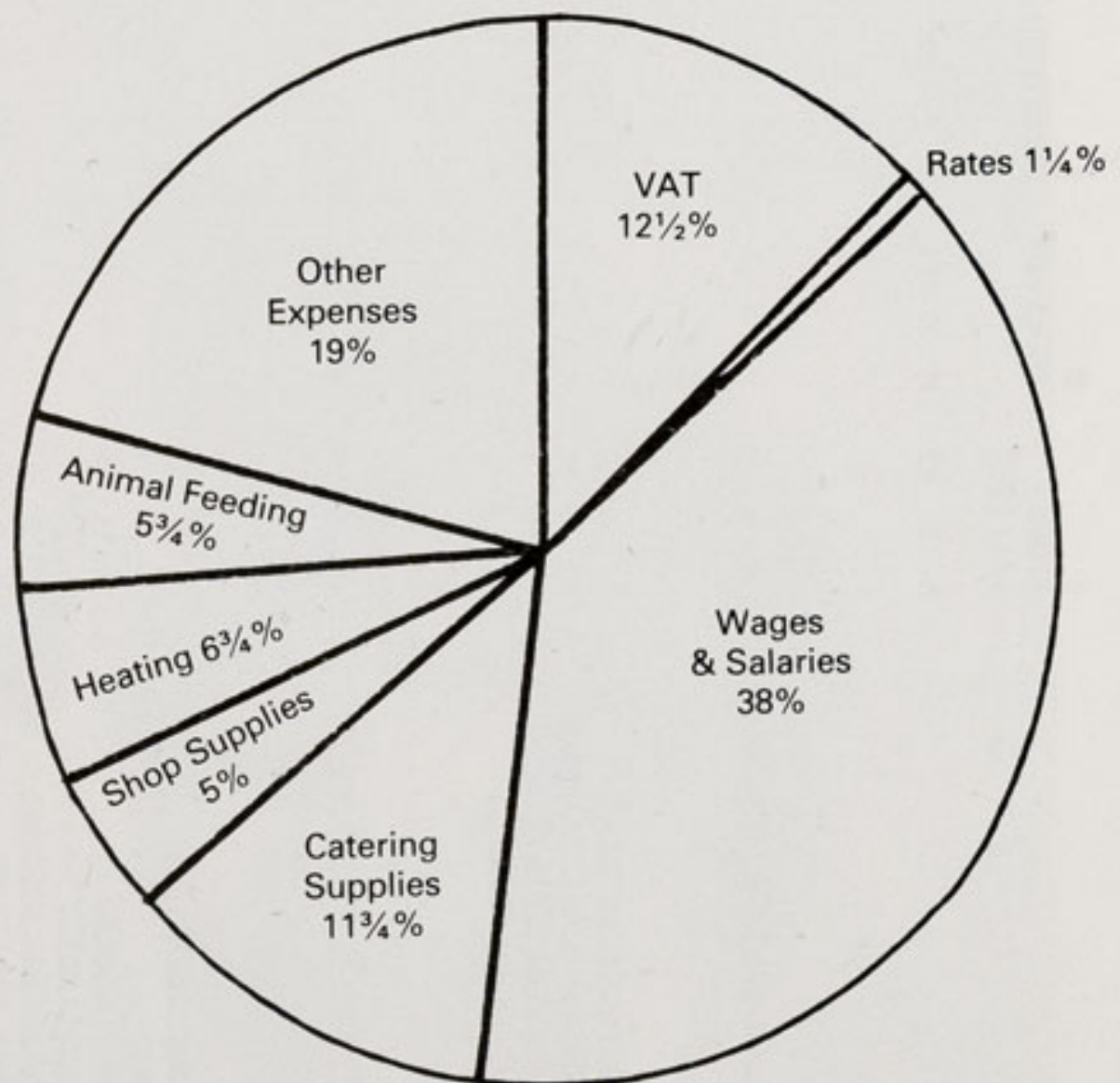


EXPENDITURE



VAT { £0.22 million paid Direct to Customs & Excise
£0.08 million included in purchases

On Zoo Wages
& Salaries,
Supplies & Services
£2.07 million
including
£0.08 million
Depreciation



Expenditure:—

	1983	1982
	£	£
Animal Welfare	413777	407233
Gardens	136183	131848
Maintenance etc.	229305	188557
	<u>£779265</u>	<u>£727638</u>

MAMMALS

1 STOCK 1/1/1983			2 RECEIVED			3 BORN/H'CH			4 D.N.S 30 DAYS			5 DEATHS OTHER			6 DISPOSALS			7 STOCK 31/12/1983		
M	F	Y?	M	F	Y?	M	F	Y?	M	F	Y?	M	F	Y?	M	F	Y?	M	F	Y?

MONOTREMATA

Australian Echidna	<u>Tachyglossus aculeatus</u>	1	1	0													1	1	0
--------------------	-------------------------------	---	---	---	--	--	--	--	--	--	--	--	--	--	--	--	---	---	---

MARSUPIALIA

Tammar Wallaby	<u>Macropus eugenii</u>	2	3	4			0	0	1										4	4	2	
Red-necked Wallaby	<u>Macropus rufogriseus</u>	0	0	36			0	0	12			0	0	9	0	0	10			0	0	29
Western Grey Kangaroo	<u>Macropus fuliginosus</u>	2	3	1			0	0	1			0	0	1	0	0	1			2	3	0
Red Kangaroo	<u>Macropus rufus</u>	1	1	0								0	0	1	0	0	1			0	0	0

CHIROPTERA

Rodrigues Fruit Bat	<u>Pteropus rodricensis</u>	0	0	0	6	4	0	1	1	0	0	1	0							7	4	0
---------------------	-----------------------------	---	---	---	---	---	---	---	---	---	---	---	---	--	--	--	--	--	--	---	---	---

PRIMATES

Ring-tailed Lemur	<u>Lemur catta</u>	9	9	0			0	0	9	0	2	2	1	1	0	1	1	0			11	8	0	
Mayotte Lemur	<u>Lemur macaco mayottensis</u>	1	3	0																	1	3	0	
Slow Loris	<u>Nycticebus coucang</u>	1	2	0																	1	2	0	
White-fronted Capuchin	<u>Cebus albifrons</u>	3	4	0			0	0	1				0	1	0						3	3	1	
Squirrel Monkey	<u>Saimiri sciureus</u>	3	0	0												3	0	0			0	0	0	
Spider Monkey(black faced)	<u>Ateles paniscus</u>	2	4	0			0	0	1	0	0	1									2	4	0	
Lion-tailed Macaque	<u>Macaca silenus</u>	5	4	0			0	0	1							1	4	0			4	1	0	
Barbary Macaque	<u>Macaca sylvanus</u>	5	7	0			0	0	2				1	0	0	1	0	0			4	7	2	
Celebes Ape	<u>Macaca niger</u>	3	2	0			0	0	2	0	0	1	0	1	0						4	1	0	
Hamadryas Baboon	<u>Papio hamadryas</u>	5	8	0			0	0	2							2	2	0			3	6	2	
Grivet Monkey	<u>Cercopithecus aethiops</u>	1	1	0												1	1	0			0	0	0	
Sykes Guenon	<u>Cercopithecus albogularis</u>	0	0	0	2	2	1															2	2	1
Sykes x Moloney's Form	<u>Cercopithecus albogularis x bred</u>	1	1	0												1	1	0			0	0	0	
De Brazza Monkey	<u>Cercopithecus neglectus</u>	2	2	0	0	0	7	0	0	2	0	0	1	1	1	0						2	7	1
White-nosed Guenon	<u>Cercopithecus nictitans</u>	1	1	0												1	1	0			0	0	0	
Talapoin Monkey	<u>Miopithecus talapoin</u>	5	5	0																	5	5	0	
Patas Monkey	<u>Erythrocebus patas</u>	2	7	0			1	1	0				0	1	0	0	2	0			3	5	0	



Grey Kangaroo with youngster
Courtesy of Cliff Brett, Mel Grundy Agency

MAMMALS

		1 STOCK 1/1/1983			2 RECEIVED			3 BORN/H'CH			4 D.N.S 30 DAYS			5 DEATHS OTHER			6 DISPOSALS			7 STOCK 31/12/1983		
		M	F	Y?	M	F	Y?	M	F	Y?	M	F	Y?	M	F	Y?	M	F	Y?	M	F	Y?
Lar Gibbon	<u>Hylobates lar</u>	2	0	0										1	0	0				1	0	0
Mueller's Gibbon	<u>Hylobates muelleri</u>	1	0	0																		
Chimpanzee	<u>Pan troglodytes</u>	5	9	0													1	0	0			
Orang utan (Bornean Form)	<u>Pongo pygmaeus pygmaeus</u>	4	2	0	0	1	0	0	0	3	0	0	2							5	10	0
Orang utan (Sumatran Form)	<u>Pongo pygmaeus abelii</u>	1	1	0				1	1	0										5	4	0
Western Lowland Gorilla	<u>Gorilla g gorilla</u>	1	0	0				1	0	0										2	1	0
Eastern Lowland Gorilla	<u>Gorilla g zraueri</u>	1	0	0																1	0	0

RODENTIA

Malay Giant Squirrel	<u>Ratufa bicolor</u>	1	1	0																	1	1	0	
Fire-footed Squirrel	<u>Funisciurus pyrrhopus</u>	2	1	0	2	3	0	0	0	1	0	0	1				0	0	1		3	4	0	
Prairie Marmot	<u>Cynomys ludovicianus</u>	0	0	143				0	0	28											0	0	145	
Woodchuck	<u>Marmota monax</u>	1	0	0										0	0	20			0	0	6			
Beaver	<u>Castor canadensis</u>	1	1	0	0	0	3							1	0	0					0	0	0	
African Crested Porcupine	<u>Hystrix cristata</u>	1	2	0										0	0	1					2	2	0	
Indian Crested Porcupine	<u>Hystrix indica</u>	1	1	0																	1	2	0	
Capybara	<u>Hydrochoerus hydrochaeris</u>	1	1	3				0	0	4							0	0	1		1	2	3	
Golden Agouti	<u>Dasypsecta aguti</u>	3	3	0				0	0	1				0	0	1			0	0	1	3	2	0
Coypu	<u>Myocastor coypus</u>	0	0	18				0	0	4				0	0	2			0	0	4	0	0	16
Mountain Viscacha	<u>Lagidium viscaccia</u>	1	2	0										0	1	0					0	0	2	

CARNIVORA

Black-backed Jackal	<u>Canis mesomelas</u>	2	0	0										1	0	0					1	0	0	
Dingo	<u>Canis familiaris</u>	1	2	0				1	0	0												2	2	0
Arctic Fox	<u>Alopex lagopus</u>	2	2	0																		2	2	0
Fennec Fox	<u>Vulpes zerda</u>	1	0	0																		1	0	0
Brown Bear	<u>Ursus arctos</u>	1	2	0				0	0	2												1	2	2
Polar Bear	<u>Thalarctos maritimus</u>	1	1	0										1	0	0						0	1	0
Common Raccoon	<u>Procyon lotor</u>	1	1	0				0	1	0												1	2	0
Coati	<u>Nasua nasua</u>	1	2	0				0	0	4											0	0	4	
Kinkajou	<u>Potos flavus</u>	5	2	0				0	1	0											1	0	0	
Small Clawed Otter	<u>Aonyx cinerea</u>	0	0	0	1	1	0															4	3	0
Blotched Genet	<u>Genetta tigrina</u>	3	2	0																	1	0	0	
Striped Skunk	<u>Mephitis mephitis</u>	1	1	0																		2	2	0
Spotted Skunk	<u>Spilogale putorius</u>	1	1	0																		1	1	0
African Civet	<u>Viverra civetta</u>	2	1	0										1	0	0						0	1	0
Binturong	<u>Arctictis binturong</u>	2	2	0										0	0	1						0	1	0
African Banded Mongoose	<u>Mungos mungo</u>	1	1	0	4	4	0															1	1	0



Sealion
Courtesy Chester Observer



Baby Tapir
Courtesy of G. Crowther, Daily Mirror

MAMMALS		1 STOCK 1/1/1983	2 RECEIVED	3 BORN/H'CH	4 D.N.S 30 DAYS	5 DEATHS OTHER	6 DISPOSALS	7 STOCK 31/12/1983
Meerkat	<u>Suricata suricatta</u>	2 0 0						2 0 0
Margay	<u>Felis wiedi</u>	2 1 0		0 0 1			0 0 2	1 1 0
Jungle Cat	<u>Felis chaus</u>	3 1 0		0 0 3			0 0 2	2 3 0
Scottish Wildcat	<u>Felis sylvestris</u>	1 4 0					0 2 0	1 2 0
Ocelot	<u>Felis pardalis</u>	1 2 0						1 2 0
Caracal Lynx	<u>Felis caracal</u>	1 1 2		0 0 2			0 0 4	1 1 0
European Lynx	<u>Felis lynx</u>	0 2 0	1 0 0					1 2 0
Bobcat	<u>Felis rufus</u>	1 0 0						1 0 0
Serval	<u>Felis serval</u>	1 1 0	0 1 0					1 2 0
Geoffroy's Cat	<u>Felis geoffroyi</u>	1 3 0	0 0 2	0 0 1			0 0 3	2 2 0
Jaguarondi	<u>Felis jagouarundi</u>	1 3 0				0 1 0		1 2 0
Puma	<u>Felis concolor</u>	1 2 0		0 0 3	0 0 2	0 0 1		1 2 0
Lion	<u>Panthera leo</u>	1 3 0				0 1 0		1 2 0
Tiger (Sumatran Form)	<u>Panthera tigris</u>	0 0 0	1 0 0					1 0 0
Tiger (Siberian Form)	<u>Panthera tigris</u>	1 1 0						1 1 0
Leopard	<u>Panthera pardus</u>	1 0 0					1 0 0	0 0 0
Leopard (Black Form)	<u>Panthera pardus</u>	1 1 0						1 1 0
Leopard (Chinese Form)	<u>Panthera pardus</u>	1 1 0		0 0 1	0 0 1			1 1 0
Jaguar	<u>Panthera onca</u>	1 0 0					1 0 0	0 0 0
Cheetah	<u>Acinonyx jubatus</u>	1 1 0						1 1 0
PINNIPEDIA								
Californian Sealion	<u>Zalophus californianus</u>	1 3 0						1 3 0
PROBOSCIDEA								
Indian Elephant	<u>Elephas maximus</u>	1 2 0						1 2 0
PERISSODACTYLA								
Przewalski's Horse	<u>Equus przewalskii</u>	1 0 0	0 0 4				0 0 1	1 3 0
Onager (Persian)	<u>Equus hemionus</u>	1 2 0		1 0 0				2 2 0
Onager x bred	<u>Equus hemionus</u>	1 1 0					1 0 0	0 1 0
Common Zebra	<u>Equus burchelli</u>	4 7 0		0 0 3	0 0 1		0 0 1	4 8 0
Grevy's Zebra	<u>Equus grevyi</u>	1 2 0		1 0 0		1 0 0	0 1 0	1 1 0
Zebroid (Horse x Zebra)		1 0 0						1 0 0
Malayan Tapir	<u>Tapirus indicus</u>	0 1 0					0 1 0	0 0 0
South American Tapir	<u>Tapirus terrestris</u>	2 3 0		0 0 2			0 0 1	4 2 0

MAMMALS		1 STOCK 1/1/1983	2 RECEIVED	3 BORN/H'CH	4 D.N.S 30 DAYS	5 DEATHS OTHER	6 DISPOSALS	7 STOCK 31/12/1983							
		M F Y?	M F Y?	M F Y?	M F Y?	M F Y?	M F Y?	M F Y?							
Black Rhinoceros	<u>Diceros bicornis</u>	1 1 0				0 1 0		1 0 0							
White Rhinoceros	<u>Ceratotherium simum</u>	1 1 0						1 1 0							
ARTIODACTYLA															
Vietnam Pig	<u>Sus scrofa</u>	0 0 0	1 3 0	0 0 3	0 0 1		0 0 1	1 4 0							
Collard Peccary	<u>Tayassu tajacu</u>	1 0 0						1 0 0							
Common Hippopotamus	<u>Hippopotamus amphibius</u>	1 1 0						1 1 0							
Llama	<u>Lama glama</u>	1 2 0		0 0 1	0 0 1			1 2 0							
Guanaco	<u>Lama guanicoe</u>	5 10 0		0 0 3			0 0 7	2 9 0							
Alpaca	<u>Lama pacos</u>	2 1 0						2 1 0							
Bactrian Camel	<u>Camelus bactrianus</u>	1 1 0					0 1 0	1 0 0							
Arabian Camel	<u>Camelus dromedarius</u>	1 1 0						1 1 0							
Axis Deer	<u>Cervus axis</u>	7 3 0		0 0 4			0 0 2	6 4 2							
Sika Deer (Formosan Form)	<u>Cervus nippon</u>	0 3 0						0 3 0							
Wapiti	<u>Cervus canadensis</u>	2 4 0		0 0 2	0 0 1			3 4 0							
Pere David's Deer	<u>Elaphurus davidianus</u>	12 21 2		0 0 2	0 0 1	0 0 2	0 0 19	4 10 0							
Reindeer	<u>Rangifer tarandus</u>	4 6 0		0 0 5	0 0 2	0 0 1		5 7 0							
Chinese Water Deer	<u>Hydropotes inermis</u>	0 2 0				0 1 0		0 1 0							
Giraffe	<u>Giraffa camelopardalis</u>	0 3 0	1 0 0			1 0 0		0 3 0							
Eland	<u>Taurotragus oryx</u>	3 2 0		1 1 0				4 3 0							
Nilgai	<u>Boselaphus tragocamelus</u>	3 2 0				0 0 2	0 0 1	1 1 0							
Ankole Cattle	<u>Bos taurus</u>	2 2 0		0 1 0		0 1 0	1 0 0	1 2 0							
American Bison	<u>Bison bison</u>	3 5 0		1 0 0				4 5 0							
Red Lechwe	<u>Kobus lechwe</u>	3 13 0		0 0 4		0 0 2	0 0 1	2 11 4							
Beisa Oryx	<u>Oryx gazella beisa</u>	1 0 0						1 0 0							
Wildebeeste	<u>Connochaetes taurinus</u>	2 2 0		0 0 0	0 0 1	0 0 1	0 0 1	1 1 0							
Blackbuck	<u>Antelope cervicapra</u>	2 4 0		0 0 4			0 0 2	2 4 2							
Arabian Gazelle	<u>Gazella arabica</u>	4 7 0		0 0 4	0 0 1	0 0 3		5 6 0							
Bagot Goat	<u>Capra hircus</u>	2 2 0	0 0 1	0 0 1			0 0 2	1 3 0							
Soay Sheep	<u>Ovis aries</u>	0 0 14		0 0 8		0 0 2	0 0 8	0 0 12							
		684		58		157		24		73		128		674	
		105 species													

BIRDS

		1			2			3			4			5			6			7		
		STOCK			RECEIVED			BORN/H'CH			D.N.S			DEATHS			DISPOSALS			STOCK		
		1/1/1983									30 DAYS			OTHER						31/12/1983		
	M	F	Y?	M	F	Y?	M	F	Y?	M	F	Y?	M	F	Y?	M	F	Y?	M	F	Y?	
STRUTHIONIFORMES																						
Ostrich																						
	<u>Struthio camelus</u>	0	1	0	1	0	0	0	0	0	13	0	0	13						1	1	0
RHEIFORMES																						
Common Rhea	<u>Rhea americana</u>	1	1	0										1	0	0				0	1	0
CASUARIIFORMES																						
Emu	<u>Dromaius novaehollandiae</u>	1	1	0	0	0	1							0	0	1				1	1	0
Chilean Tinamou	<u>Nothoprocta perdicaria</u>	0	0	13				0	0	14	0	0	1	0	0	4	0	0	6	0	0	16
SPHENISCIFORMES																						
Humboldt's Penguin	<u>Spheniscus humboldti</u>	8	3	2				0	0	7	0	0	2	0	0	2				7	4	5
Blackfooted Penguin	<u>Spheniscus demersus</u>	0	0	13				0	0	5	0	0	1	0	0	3				4	7	3
CICONIIFORMES																						
Common Grey Heron	<u>Ardea cinerea</u>	0	0	2																0	0	2
Cattle Egret	<u>Bubulcus ibis</u>	0	0	2																0	0	0
Little Egret	<u>Egretta garzetta</u>	0	0	1										0	0	1	0	0	1	0	0	0
Night Heron	<u>Nycticorax nycticorax</u>	4	1	4				0	0	4										0	0	1
Sacred Ibis	<u>Threskiornis aethiopicus</u>	0	0	10										0	0	1				0	0	9
Straw-necked Ibis	<u>Threskiornis spinicollis</u>	2	2	3										0	0	1				0	0	6
Indian White Ibis	<u>Threskiornis</u> <u>melanocephalus</u>	1	1	1																1	1	1
Australian White Ibis	<u>Threskiornis molucca</u> <u>roseus</u>	7	1	0										0	0	1	0	0	7	0	0	0
Chilean Flamingo	<u>Phoenicopterus ruber</u> <u>chilensis</u>	5	17	0	2	0	0							0	2	0	0	2	0	7	13	0
Rosy Flamingo	<u>Phoenicopterus ruber</u> <u>ruber</u>	5	4	0													0	1	0	5	3	0
ANSERIFORMES																						
White-faced Whistling Duck	<u>Dendrocygna viduata</u>	0	0	0	2	2	0													2	2	0
Fulvous Tree Duck	<u>Dendrocygna bicolor</u>	1	2	0	0	0	1	0	0	4	0	0	1	0	0	2				1	3	1
Black Swan	<u>Cygnus atratus</u>	1	1	0				0	0	7	0	0	2				0	0	5	1	1	0
Mute Swan	<u>Cygnus olor</u>	1	1	0																1	1	0

BIRDS

		1			2			3			4			5			6			7		
		STOCK			RECEIVED			BORN/H'CH			D.N.S			DEATHS			DISPOSALS			STOCK		
		1/1/1983									30 DAYS			OTHER						31/12/1983		
	M	F	Y?	M	F	Y?	M	F	Y?	M	F	Y?	M	F	Y?	M	F	Y?	M	F	Y?	
Grey-lag Goose	<u>Anser anser</u>	1	0	0										0	0	1				0	0	0
Lesser Snow Goose	<u>Anser caerulescens</u>	2	1	1	0	0	1	0	0	4	0	0	1	0	0	1	0	0	1	2	1	3
Emperor Goose	<u>Anser canagicus</u>	2	0	0																0	2	0
Pink-footed Goose	<u>Anser fabalis</u> <u>brachyrhynchus</u>	0	0	1																0	0	1
Bar-headed Goose	<u>Anser indicus</u>	2	2	0													0	0	1	1	1	1
Ross's Snow Goose	<u>Anser rossi</u>	1	1	0																1	1	0
Canada Goose	<u>Branta canadensis</u>	0	0	5													0	0	5	0	0	0
Barnacle Goose	<u>Branta leucopsis</u>	0	0	1	0	0	1													1	1	0
Hawaiian Goose	<u>Branta sandvicensis</u>	1	1	0	0	0	2							0	0	1				2	1	0
Cereopsis Goose	<u>Cereopsis novaehollandiae</u>	1	1	0				0	1	0										1	2	0
Andean Goose	<u>Chloephaga melanoptera</u>	1	1	0																1	1	0
Common Shelduck	<u>Tadorna tadorna</u>	0	0	1	0	0	3													2	2	0
Common Pintail	<u>Anas acuta</u>	3	0	0													3	0	0	0	0	0
Bahama Pintail	<u>Anas bahamensis</u>	2	4	0										1	1	0				1	3	0
Wigeon	<u>Anas penelope</u>	2	2	6	0	1	0							0	0	1	1	2	5	1	1	0
Northern Shoveler	<u>Anas clypeata</u>	0	0	0	2	2	0													2	2	0
Red Shoveler	<u>Anas platatea</u>	3	3	0										0	1	0				3	2	0
Laysan Teal	<u>Anas platyrhynchos</u> <u>laysanensis</u>	10	1	0										1	1	0	1	0	0	8	0	0
Chiloe Wigeon	<u>Anas sibilatrix</u>	8	1	0				0	0	4	0	0	2	0	0	1	0	0	6	2	2	0
Ringed Teal	<u>Anas leucopygia</u>	0	0	0	1	1	0													1	1	0
Tufted Duck	<u>Aythya fuligula</u>	4	2	0	0	0	1							0	0	1				3	3	0
Rosy-billed Pochard	<u>Netta peposaca</u>	3	2	0				0	0	7	0	0	1	0	0	2	0	0	5	2	2	0
Red-crested Pochard	<u>Netta rufina</u>	2	2	0	0	0	1							0	0	1				2	2	0
Maned Goose	<u>Chenonetta jubata</u>	2	1	0	0	1	0													2	2	0
Mandarin Duck	<u>Aix galericulata</u>	4	5	0	0	0	5	0	0	4	0	0	4	0	0	1	0	0	4	5	4	0
Carolina Duck	<u>Aix sponsa</u>	0	0	5	0	0	1	0	0	4				0	0	3				3	4	0
Aylesbury Duck	<u>Anas platyrhynchos</u>	0	0	3													0	0	1	0	0	2
FALCONIFORMES																						
Andean Condor	<u>Vultur gryphus</u>	1	1	0																1	1	0
White-headed Vulture	<u>Trigonoceps occipitalis</u>	1	2	0										1	0	0				0	2	0
Bateleur Eagle	<u>Terathopius ecaudatus</u>	0	1	0																0	1	0
Wedge-tailed Eagle	<u>Aquila audax</u>	1	1	0																1	1	0
GALLIFORMES																						
Variable Chachalaca	<u>Ortalis motmot</u>	0	0	0	0	0	3							0	0	1				2	0	0
Sclater's Crested Curassow	<u>Crax fasciolata slateri</u>	2	3	0										1	1	0				1	2	0

BIRDS

		1			2			3			4			5			6			7		
		STOCK 1/1/1983			RECEIVED			BORN/H'CH			D.N.S 30 DAYS			DEATHS OTHER			DISPOSALS			STOCK 31/12/1983		
		M	F	Y?	M	F	Y?	M	F	Y?	M	F	Y?	M	F	Y?	M	F	Y?	M	F	Y?
Crested Guan	<u>Penelope purpurascens</u>	2	2	1				0	0	2												
Blue Eared-Pheasant	<u>Crossoptilon auritum</u>	1	2	0	0	0	1													2	2	3
Brown Eared-Pheasant	<u>Crossoptilon mantchuricum</u>	1	1	0				0	0	3	0	0	3							0	0	4
White Eared-Pheasant	<u>Crossoptilon crossoptilon</u>	1	1	0																1	1	0
Palawan Peacock Pheasant	<u>Polynlectron emphanum</u>	1	2	0																1	1	0
Veillot's Crested Fireback Pheasant	<u>Lophura ignita rufa</u>	1	0	0																2	1	0
Silver Pheasant	<u>Lophura nycthemera</u>	1	1	0										1	1	0				1	0	0
Sonnerat's Jungle Fowl	<u>Gallus sonneratii</u>	1	2	0				0	0	3	0	0	3	0	1	0				1	1	0
Common Peafowl	<u>Pavo cristatus</u>	3	2	1	0	0	2	0	0	2	0	0	1							3	5	1
Bantams Various	<u>Gallus species, Domestic</u>	0	0	27				0	0	36				0	0	3	0	0	60	0	0	0
GRUIFORMES																						
Sarus Crane	<u>Grus antigone</u>	2	2	0																		
Demoiselle Crane	<u>Anthropoides virgo</u>	0	2	0	1	0	0										0	1	0	2	2	0
Purple Gallinule	<u>Porphyrio porphyrio</u>	1	1	1										0	0	1				1	1	0
Red and White Crake	<u>Laterallus leucopyrrhus</u>	0	0	5										0	0	1				0	0	2
Sun Bittern	<u>Eurypyga helias</u>	1	1	1										0	0	1				0	0	4
																				1	1	1
CHARADRIIFORMES																						
Grey-headed Gull	<u>Larus cirrocephalus</u>	2	2	0																		
Southern Stone Curlew	<u>Burhinus magirostris</u>	2	0	0																2	2	0
Blacksmith's Plover	<u>Vanellus armatus</u>	0	0	3	0	0	3													1	1	0
Crowned Plover	<u>Vanellus coronatus</u>	2	1	1				0	0	2	0	0	2							0	0	6
																				2	1	1
COLUMBIFORMES																						
Speckled Pigeon	<u>Columba guinea</u>	0	0	0	0	0	4															
Chinese Necklaced Dove	<u>Streptopelia chinensis</u>	1	0	0																0	0	4
Laughing Dove	<u>Streptopelia senegalensis</u>	0	0	2																1	0	0
Java Dove	<u>Streptopelia, Domestic</u>	0	0	1																1	1	0
Crested Bronzewing Pigeon	<u>Ochophaps lophotes</u>	0	0	6													0	0	1	0	0	0
Mountain Witch Dove	<u>Geotrygon versicolor</u>	1	1	3										0	0	3	0	0	1	0	0	2
Bleeding Heart Pigeon	<u>Gallicolumba criniger</u>	2	1	0										2	1	0				0	0	5
Hybrid Dove		0	0	1										0	0	1				0	0	0

BIRDS

		1			2			3			4			5			6			7		
		STOCK 1/1/1983			RECEIVED			BORN/H'CH			D.N.S 30 DAYS			DEATHS OTHER			DISPOSALS			STOCK 31/12/1983		
		M	F	Y?	M	F	Y?	M	F	Y?	M	F	Y?	M	F	Y?	M	F	Y?	M	F	Y?
PSITTIFORMES																						
Blue-streaked Lory	<u>Eos reticulata</u>	0	0	0	0	0	2															
Red Lory	<u>Eos bornea</u>	2	0	0	0	1	0													2	1	0
Scaly-breasted Lorikeet	<u>Trichoglossus chlorolepidotus</u>	0	0	3																0	0	3
Edward's Lorikeet	<u>Trichoglossus haematodus capistratus</u>	1	1	0																0	2	0
Swainson's Lorikeet	<u>Trichoglossus haematodus moluccanus</u>	0	0	4	0	0	1													0	0	5
Weber's Lorikeet	<u>Trichoglossus haematodus weberi</u>	0	0	2																1	1	0
Ornate Lorikeet	<u>Trichoglossus ornatus</u>	1	1	0																1	1	0
Goldie's Lorikeet	<u>Trichoglossus goldiei</u>	0	0	0	1	1	0										0	0	1	1	1	0
Dusky Lory	<u>Pseudeos fuscata</u>	3	1	0	0	0	1													2	2	0
Palm Cockatoo	<u>Probosciger aterrimus</u>	0	0	0	2	2	0							0	1	0				2	1	0
White-tailed Black Cockatoo	<u>Calyptrorhynchus funereus baudinii</u>	1	1	0										0	1	0				1	0	0
Bare-eyed Cockatoo	<u>Cacatua sanguinea</u>	1	1	0													1	1	0	0	0	0
Leadbeater's Cockatoo	<u>Cacatua leadbeateri</u>	1	0	0													1	0	0	0	0	0
Moluccan Cockatoo	<u>Cacatua moluccensis</u>	1	1	0	0	0	1							0	0	1				1	1	0
Blue-eyed Cockatoo	<u>Cacatua ophthalmica</u>	3	4	1				0	0	2							0	0	2	4	2	2
Cockatiel	<u>Nymphicus hollandicus</u>	0	0	0	1	5	0													1	5	0
Kea	<u>Nestor notabilis</u>	1	0	0	0	0	3													2	1	1
Red-sided Eclectus Parrot	<u>Eclectus roratus goodsoni</u>	1	1	0				0	0	1							0	0	2	1	1	0
Crimson-winged Parrakeet	<u>Aprosmictus erythropterus</u>	2	1	1				0	0	1							0	0	2	2	1	0
Barraband Parrakeet	<u>Polytelis swainsoni</u>	1	1	0																1	1	0
Lesser Vasa Parrot	<u>Coracopsis nigra nigra</u>	1	2	0																1	2	0
Vernall's Hanging Parrot	<u>Loriculus vernalis</u>	1	1	0																1	1	0
Red-fronted Parrakeet	<u>Cyanoramphus novaezelandiae</u>	0	0	1										0	0	1				0	0	0
Senegal Parrot	<u>Poicephalus senegalus</u>	4	1	0																4	1	0
African Grey Parrot	<u>Psittacus erithacus</u>	1	0	0	0	0	1										0	0	1	0	0	1
Derbyan Parrakeet	<u>Psittacula derbiana</u>	4	4	0				0	0	1							0	0	1	4	4	0
Blue & Yellow Macaw	<u>Ara ararauna</u>	4	1	0	0	0	2							0	0	1	0	0	1	2	1	2
Red & Yellow Macaw	<u>Ara macao</u>	1	1	0										0	0	1	0	0	1	0	0	0
Amboina King Parrot	<u>Alisteus amboinensis</u>	0	1	0													0	1	0	0	0	0
Red-fronted Macaw	<u>Ara rubrogenys</u>	0	7	0	2	0	0													2	7	0
Red-masked Conure	<u>Aratinga erythrogenys</u>	3	1	2				0	0	3				0	0	1				3	1	4
Nanday Conure	<u>Nandayus nanday</u>	0	0	0	0	0	2										0	0	2	0	0	0

BIRDS

		1			2			3			4			5			6			7		
		STOCK			RECEIVED			BORN/H'CH			D.N.S			DEATHS			DISPOSALS			STOCK		
		1/1/1983									30 DAYS			OTHER			31/12/1983					
		M	F	Y?	M	F	Y?	M	F	Y?	M	F	Y?	M	F	Y?	M	F	Y?	M	F	Y?
Queen of Bavaria Conure	<u>Aratinga guarouba</u>	3	2	0										0	0	1	0	0	2	1	1	0
Sun Conure	<u>Aratinga solstitialis</u>	2	2	0										0	0	1	0	0	3	0	0	0
Lesser Patagonian Conure	<u>Cyanoliseus patagonus</u>	3	13	4				0	0	2				0	0	2				0	0	20
Maroon-tailed Conure	<u>Pyrrhura melanura</u>	3	2	0										1	0	0				2	2	0
Crimson-bellied Conure	<u>Pyrrhura rhodogaster</u>	2	1	0													2	1	0	0	0	0
Slender-billed Parrakeet	<u>Enicognathus leptorhynchus</u>	3	3	0				0	0	11				0	0	1	0	0	2	1	2	11
Quaker Parrakeet	<u>Myiopsitta monachus</u>	0	0	5										0	0	1				0	0	4
Yellow-faced Parrotlet	<u>Forpus xanthops</u>	1	2	8				0	0	3				0	0	2				1	2	9
Yellow-billed Amazon	<u>Amazona collaria</u>	3	1	0	0	0	20										0	0	20	3	1	0
Yellow-fronted Amazon	<u>Amazona ochrocephala</u>	0	0	1																0	1	0
Barred Parrakeet	<u>Bolborhynchus lineola</u>	0	0	1										0	0	1				0	0	0
Lilacine Amazon Parrot	<u>Amazona autumnalis</u> <u>lilacina</u>	0	2	2																2	2	0
Hawk-headed Parrot	<u>Deropterus accipitrinas</u>	0	0	0	1	1	0													1	1	0
CUCULIFORMES																						
34 Grey Go-Away Bird	<u>Crinifer concolor</u>	0	0	1																0	0	1
White-cheeked Tuaraco	<u>Tauraco leucotis</u>	1	1	0										0	0	1	0	0	1	0	0	0
Hartlaub's Tuaraco	<u>Tauraco hartlaubi</u>	0	0	0	0	0	2													0	0	2
Renauld's Ground Cuckoo	<u>Carpococcyx renauldi</u>	1	1	0																1	1	0
STRIGIFORMES																						
Barn Owl	<u>Tyto alba</u>	1	1	3																1	1	3
Spotted Eagle Owl	<u>Bubo africanus</u>	1	1	0																1	1	0
Great Eagle Owl	<u>Bubo bubo</u>	1	1	0																1	1	0
Great Horned Owl	<u>Bubo virginianus</u>	1	1	1	0	0	1							0	0	1				0	2	1
Fishing Owl	<u>Scotopelia bouvieri</u>	0	1	0																0	1	0
Spectacled Owl	<u>Pulsatrix perspicillata</u>	1	3	0																1	3	0
Snowy Owl	<u>Nyctea scandiaca</u>	1	1	4													0	0	3	2	1	0
Boobook Owl	<u>Ninox novaeseelandiae</u>	1	1	0	0	0	1										0	0	1	1	1	0
CAPRIMULGIFORMES																						
Tawny Frogmouth	<u>Podargus strigoides</u>	2	0	0																2	0	0
APODIIFORMES																						
Amazilia Hummingbird	<u>Amazilia amazilia</u>	0	0	0	0	0	2							0	0	1				0	0	1
Red-backed Mousebird	<u>Colius castanotus</u>	0	0	0	0	0	6													0	0	6



Hartlaub's Tuaraco
Courtesy of J. Gwyn Jones

REPTILES

1 STOCK 1/1/1983			2 RECEIVED			3 BORN/H'CH			4 D.N.S 30 DAYS			5 DEATHS OTHER			6 DISPOSALS			7 STOCK 31/12/1983		
M	F	Y?	M	F	Y?	M	F	Y?	M	F	Y?	M	F	Y?	M	F	Y?	M	F	Y?

RHYNCHOCEPHALIA

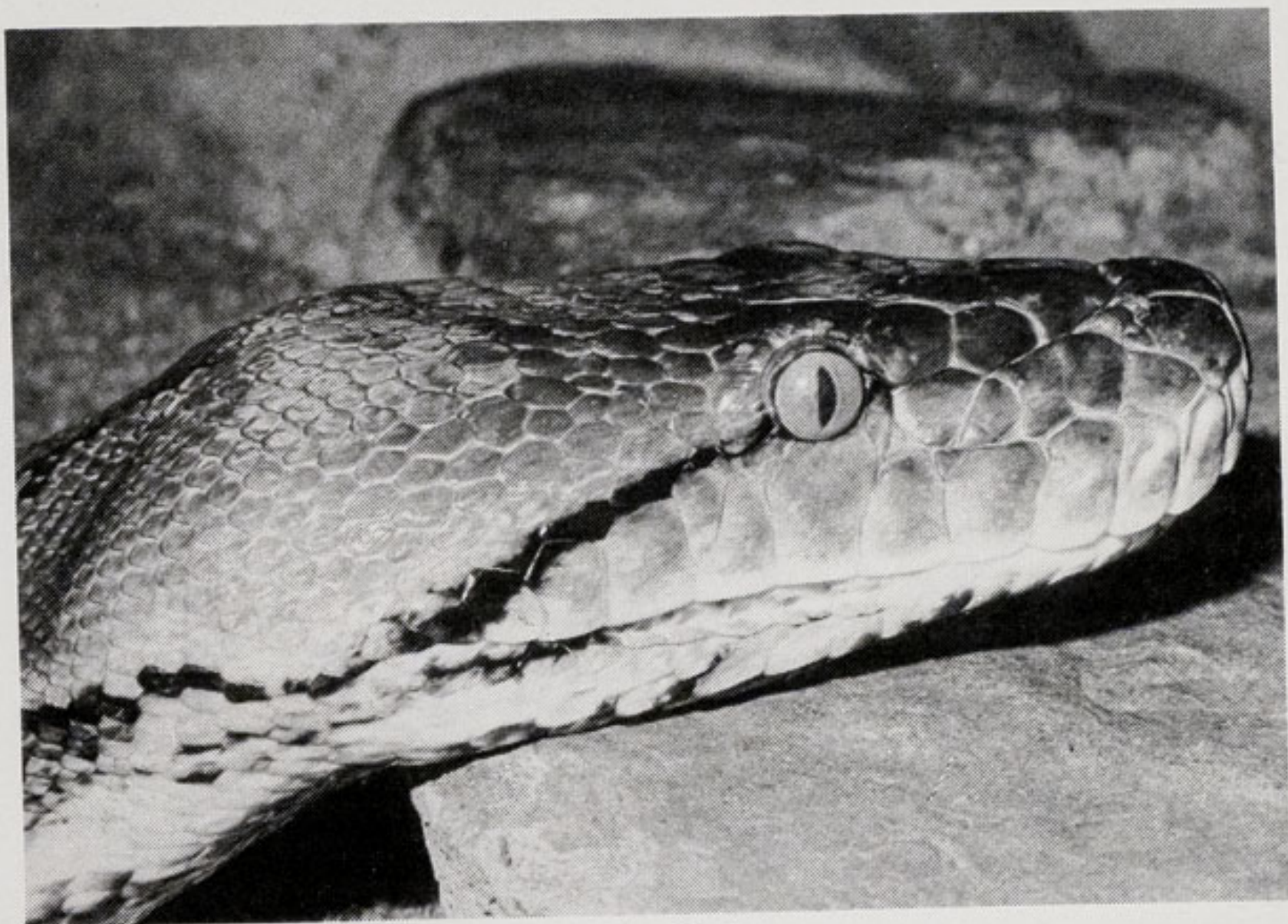
Tuatara	<u>Sphenodon punctatus</u>	1	1	0													1	1	0
---------	----------------------------	---	---	---	--	--	--	--	--	--	--	--	--	--	--	--	---	---	---

TESTUDINATA

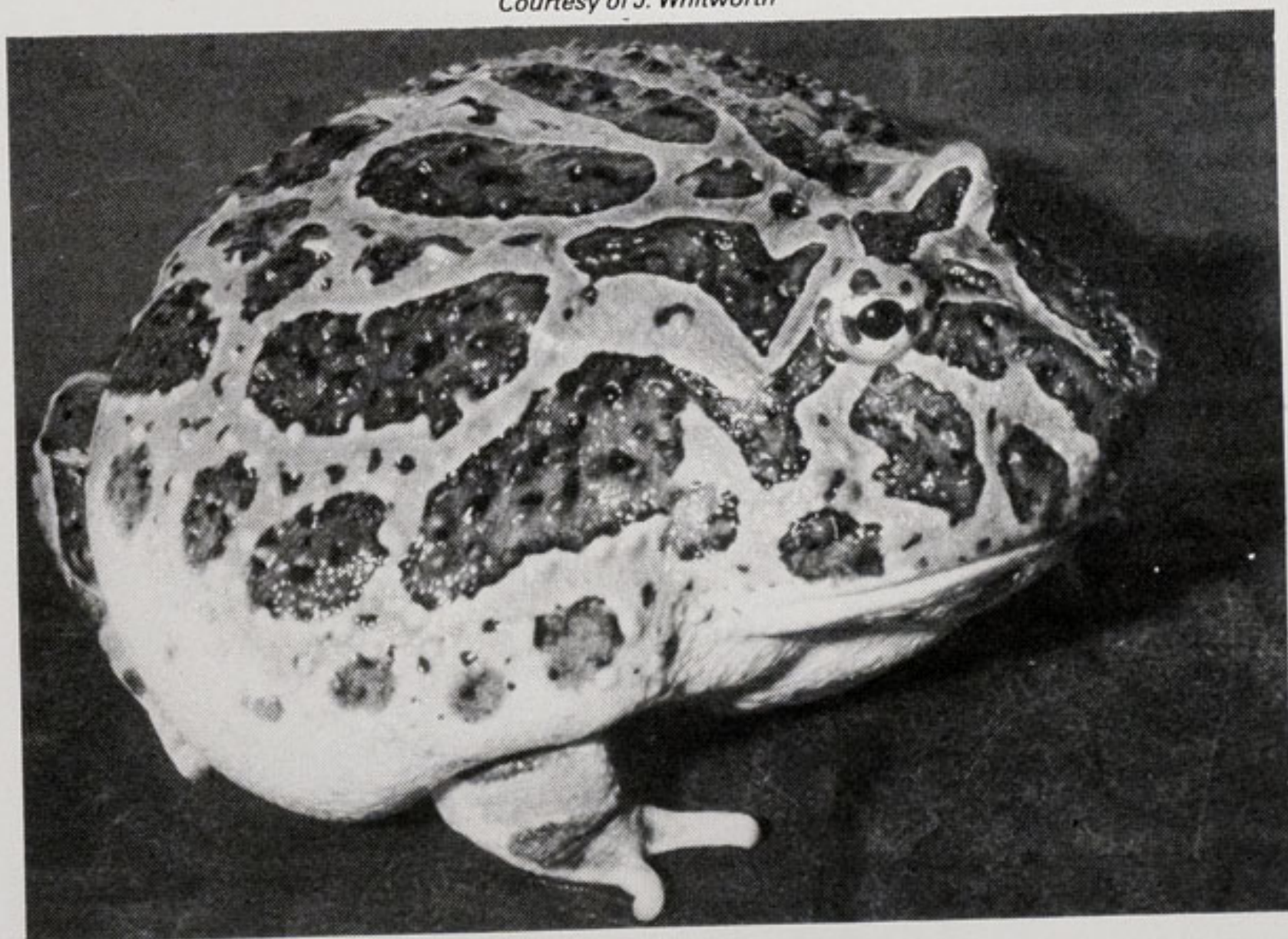
Greek Tortoise	<u>Testudo graeca</u>	0	0	5	0	0	6				0	0	2				5	4	0
Herman's Tortoise	<u>Testudo hermanni</u>	0	0	4	0	0	3				0	0	1				2	2	2
Burmese Brown Tortoise	<u>Geochelone emys</u>	1	2	0													1	2	0
Aldabra Giant Tortoise	<u>Geochelone gigantea</u>	1	4	0													1	4	0
Spurred Tortoise	<u>Geochelone sulcata</u>	1	0	2													1	0	2
Matamata Turtle	<u>Chelus fimbriatus</u>	1	0	1							0	0	1				1	0	0
Soft-shelled Turtle	<u>Trionyx triunguis</u>	1	0	0													1	0	0
Spiny Soft-shelled Turtle	<u>Trionyx spinifera</u>	0	0	0	0	0	5				0	0	2				1	1	1
Florida Soft-shelled Turtle	<u>Trionyx ferox</u>	0	0	2							0	0	1				1	0	0
Red-eared Terrapin	<u>Pseudemys scripta</u>	0	0	4													0	0	4
Marsh Terrapin	<u>Pelmedusa subrufa</u>	0	0	1													0	0	1
Geographic Terrapin	<u>Chrysemys sp</u>	0	0	2													0	0	2

SAURIA

Tokay Gecko	<u>Gekko gekko</u>	1	1	14				0	0	13							7	3	17
Day Gecko	<u>Phelsuma cepediana</u>	0	0	2							0	0	1				1	0	0
Leopard Gecko	<u>Eublepharis macularius</u>	2	11	5				0	0	50				0	0	46	2	20	0
Mexican Beaded Lizard	<u>Heloderma horridum</u>	1	2	0	0	0	1				0	0	1				1	0	2
Zonure	<u>Cordylus giganteus</u>	0	0	4	0	0	1										0	0	5
African Chameleon	<u>Chamaeleo africanus</u>	0	0	0	0	0	16				0	0	3				10	3	0
Jungle Runner	<u>Ameiva ameiva</u>	0	0	0	0	0	0										0	0	1
Horned Mountain Lizard	<u>Acanthosaura armata</u>	0	0	6							0	0	5				0	1	0
Anolis Lizard	<u>Anolis equestris equestris</u>	1	1	0	0	0	3				0	0	1				4	0	0
Common Iguana	<u>Iguana iguana</u>	6	0	0													3	3	0
Rhinoceros Iguana	<u>Cyclura cornuta</u>	5	2	0							1	0	0				3	3	0
Thailand Water Dragon	<u>Physignathus cocincinus</u>	1	1	3							1	0	0				0	4	0
Eastern Water Dragon	<u>Physignathus lesuerii</u>	0	1	0													0	1	0
	<u>lesuerii</u>																		
Plated Lizard	<u>Gerrhosaurus major</u>	1	1	0							0	1	0				1	0	0
Cunningham's Skink	<u>Egernia cunninghami</u>	0	1	0							0	1	0				0	0	0
Major Skink	<u>Egernia major</u>	0	0	1										0	0	1	0	0	0
Shingleback Lizard	<u>Trachydosaurus rugosus</u>	0	0	4													0	0	4
Pink-tongued Skink	<u>Tiliqua gerrardii</u>	0	0	1													0	0	0



Reticulated Python
Courtesy of J. Whitworth



Horned Frog
Courtesy of K. W. Green, A.R.P.S.

REPTILES

		1 STOCK 1/1/1983			2 RECEIVED			3 BORN/H'CH			4 D.N.S 30 DAYS			5 DEATHS OTHER			6 DISPOSALS			7 STOCK 31/12/1983		
		M	F	Y?	M	F	Y?	M	F	Y?	M	F	Y?	M	F	Y?	M	F	Y?	M	F	Y?
New Guinea Blue-tongued Skink	<u>Tiliqua gigas</u>	1	1	3				0	0	9	0	0	1	0	0	1				1	1	10
Blue-tongued Skink	<u>Tiliqua scincoides</u>	1	0	1										0	0	1	0	0	1	0	0	0
Prehensile-tailed Skink	<u>Corucia zebrata</u>	4	5	2										1	4	1				3	1	1
Haitian Giant Skink	<u>Diploglossus costatus</u>	0	0	5										0	0	1	0	0	4	0	0	0
Green Tree Monitor	<u>Varanus prasinus</u>	0	0	3										0	0	2				0	1	0
Bengal Monitor	<u>Varanus bengalensis</u>	1	0	0										1	0	0				0	0	0
Gould's Monitor	<u>Varanus gouldii</u>	1	0	0										1	0	0				0	0	0
Salvator Monitor	<u>Varanus salvator</u>	1	1	0										1	0	0				0	0	0
Nile Monitor	<u>Varanus niloticus</u>	0	0	1																2	0	0
Timor Monitor	<u>Varanus timorensis</u>	1	1	0													0	0	1	0	0	0
Rough-necked Monitor	<u>Varanus rudicollis</u>	0	0	1																1	1	0
Glass Snake	<u>Ophisaurus apodus</u>	0	0	1																1	0	0
Teguexin	<u>Tupinambis nigropunctatus</u>	1	1	1	0	0	1													1	0	0
SERPENTES																						
40	D'Alberti's Python	<u>Liasia fuscus albertsi</u>	1	2	0	0	0	1						0	0	1	0	0	2	1	0	0
	Carpet Python	<u>Morelia spilotes variegata</u>	1	1	0									1	1	0				0	0	0
	Royal Python	<u>Python regius</u>	0	0	2									0	0	2				0	0	0
	Indian Python	<u>Python molurus bivittatus</u>	1	1	0	1	1	0												0	0	0
	Reticulated Python	<u>Python reticulatus</u>	0	0	5	0	0	2												2	2	0
	African Python	<u>Python sebae</u>	1	1	0									0	0	3				0	0	4
	Green Tree Python	<u>Chondropython viridis</u>	1	1	0									0	1	0	1	0	0	0	0	0
	Anaconda	<u>Eunectes murinus</u>	1	1	0									1	0	0				0	1	0
	Boa Constrictor	<u>Constrictor constrictor</u>	0	1	0															1	1	0
	Cuban Boa	<u>Epicrates angulifer</u>	1	1	5									0	1	0				0	0	0
	Pacific Boa	<u>Candoia carinata</u>	1	1	0				0	0	3			0	0	2				1	1	0
	Madagascan Tree Boa	<u>Sanzinia madagascariensis</u>	2	1	0															1	1	0
	Cook's Tree Boa	<u>Boa cooki</u>	0	0	0	0	0	4						0	1	0				2	0	0
	Garter Snake	<u>Thamnophis sirtalis</u>	0	0	0	0	0	1						0	0	4				0	0	0
	Californian King Snake	<u>Lampropeltis zonata</u>	1	1	0															0	0	1
	Black Rat Snake	<u>Elaphe obsoleta</u>	0	0	0	1	1	0	0	0	1									1	1	0
	Russian Rat Snake	<u>Elaphe schrenkii</u>	0	0	0	1	3	0												1	1	1
	Corn Snake	<u>Elaphe guttata</u>	0	0	0	2	2	0	0	0	4									1	3	0
	Mandarin Snake	<u>Elaphe mandarina</u>	0	0	1									0	1	0				2	1	4
	Brown Tree Snake	<u>Boiga irregularis</u>	4	0	0									0	0	1				0	0	0
	Indian Cobra	<u>Naja naja</u>	1	1	0															4	0	0
	Black and White Cobra	<u>Naja melanoleuca</u>	1	1	0															1	1	0
	Green Mamba	<u>Dendroaspis angusticeps</u>	1	1	0												1	1	0	0	0	0
	Banded Krait	<u>Bungarus fasciatus</u>	0	0	1														0	0	1	0

REPTILES

		1 STOCK 1/1/1983			2 RECEIVED			3 BORN/H'CH			4 D.N.S 30 DAYS			5 DEATHS OTHER			6 DISPOSALS			7 STOCK 31/12/1983		
		M	F	Y?	M	F	Y?	M	F	Y?	M	F	Y?	M	F	Y?	M	F	Y?	M	F	Y?
Blue Krait	<u>Bungarus candidus</u>	0	1	0													0	1	0	0	0	0
Cerastes Viper	<u>Cerastes cerastes</u>	2	0	0	0	1	0													1	2	0
Gaboon Viper	<u>Bitis gabonica</u>	0	1	0	0	0	3							0	0	2				1	1	0
Rhinoceros Viper	<u>Bitis nasicornis</u>	1	2	0	1	0	0							1	2	0	1	0	0	0	0	0
Emerald Pit Viper	<u>Trimeresurus eurethroalmerus</u>	0	1	1										0	0	1				0	1	0
Bamboo Pit Viper	<u>Trimeresurus albolabris</u>	1	1	0				0	0	16	0	0	10							1	1	6
Lance-headed Snake	<u>Bothrops sp</u>	0	0	1										0	0	1				0	0	0
Cantil Moccasin	<u>Askiatorodon bilineata</u>	2	2	0				0	0	13				0	0	1	0	0	12	2	1	1
Black-tailed Rattlesnake	<u>Crotalus molossus</u>	1	0	0										1	0	0				0	0	0
Western Diamond-backed Rattlesnake	<u>Crotalus atrox</u>	0	1	0				0	0	11	0	0	1	0	0	5				0	1	5
Green Rock Rattlesnake	<u>Crotalus lepidus klauberi</u>	0	0	1										0	0	1				0	0	0
Pygmy Rattlesnake	<u>Sistrurus miliaris</u>	1	2	0	0	0	1							0	0	1				2	1	0

CROCODYLIA

41	Mississippi Alligator	<u>Alligator mississippiensis</u>	2	1	0															2	1	0
	Broad-fronted Crocodile	<u>Osteolaemus tetraspis</u>	2	1	0															2	1	0
	Johnston's Crocodile	<u>Crocodylus johnstoni</u>	1	1	0															1	1	0

AMPHIBIA

	Australian Tree Frog	<u>Litoria caerulea</u>	5	5	0															5	5	0
	Cuban Tree Frog	<u>Hyla septentrionalis</u>	0	0	3	0	0	1						0	0	1				0	0	3
	Brazilian Tree Frog	<u>Hyla rubra</u>	0	0	2									0	0	2				0	0	0
	Golden Tree Frog	<u>Rhacophorus sp</u>	0	0	5									0	0	3				0	0	2
	Argentine Horned Frog	<u>Ceratophrys ornata</u>	2	1	0															2	1	0
	Poison-arrow Frogs	<u>Dendrobates histrionicus</u>	0	0	0	0	0	10												0	0	10
	Nigerian Clawed Frog	<u>Xenopus tropicalis</u>	0	0	5															0	0	5
	Dwarf Aquatic Frog	<u>Hymenochirus boettgeri</u>	0	0	6															0	0	6
	Black Axolotl	<u>Amblystoma mexicanum</u>	0	0	10									0	0	1				0	0	9
	White Axolotl	<u>Amblystoma mexicanum</u>	0	0	10									0	0	7				0	0	3
	Italian Crested Newt	<u>Triturus cristatus</u>	0	0	1															0	0	1
	Japanese Fire-bellied Newt	<u>Cynops pyrrhogaster</u>	0	0	3															0	0	3

227

81

144

16

77

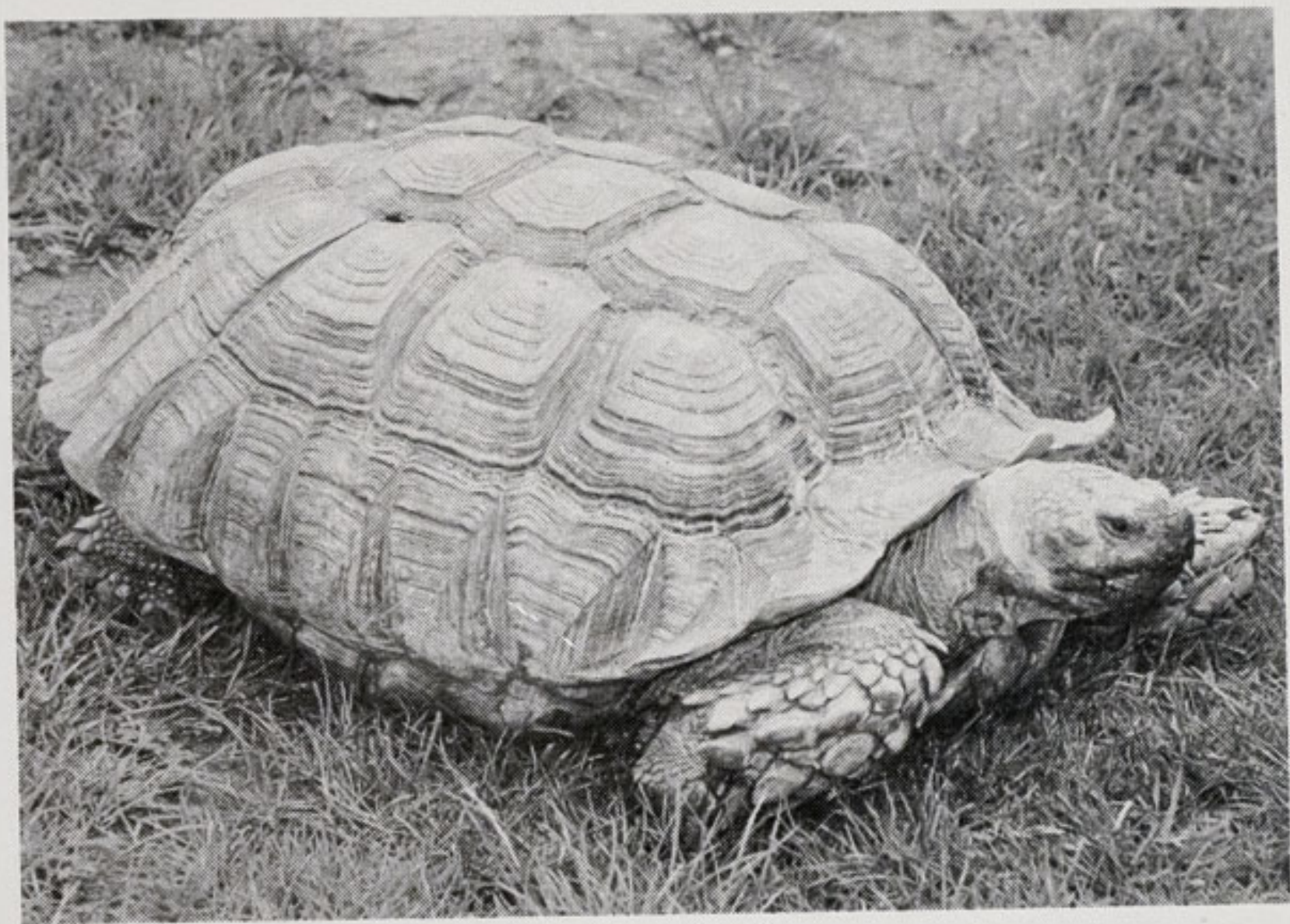
73

254

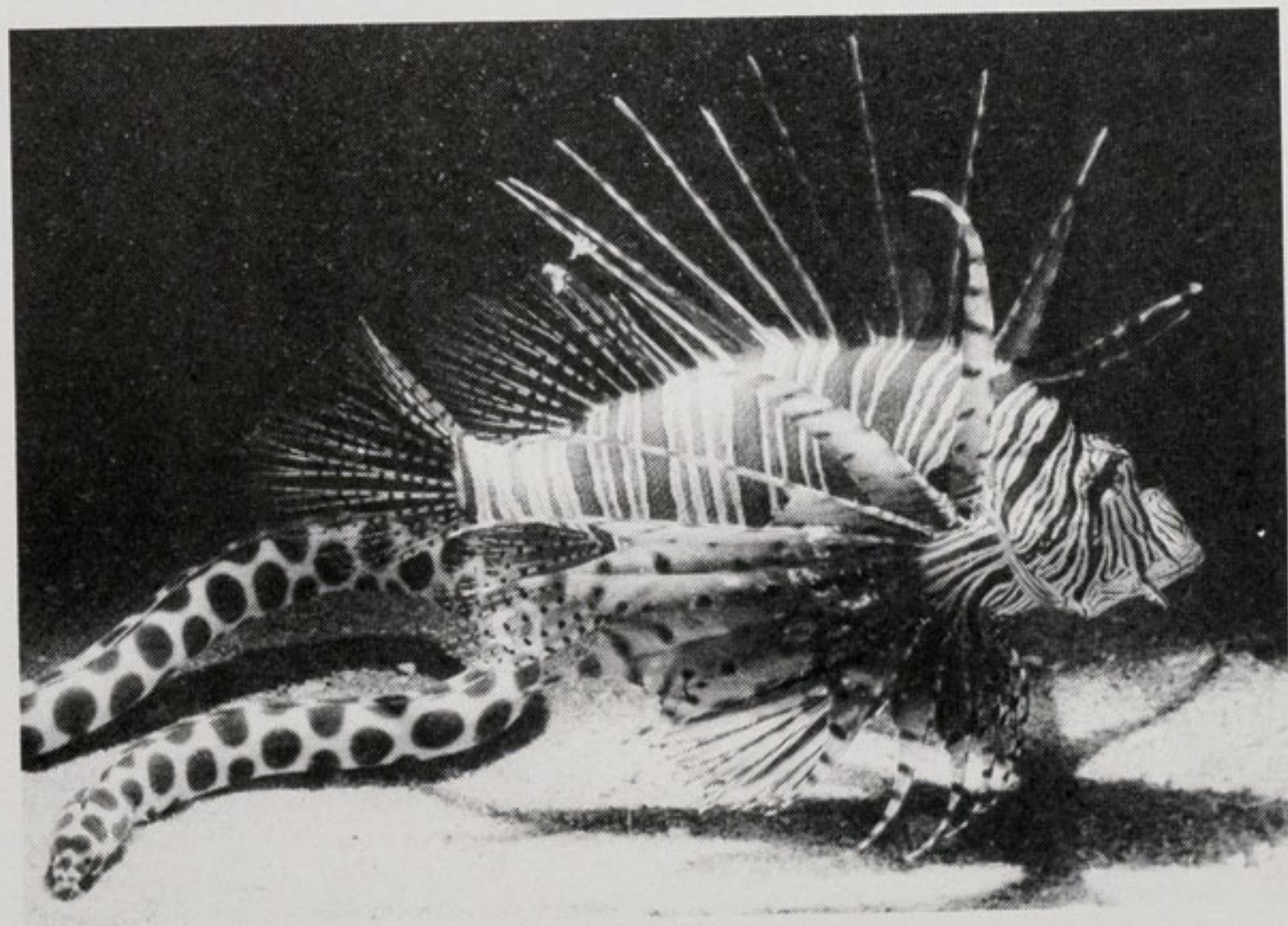
73 species

FISH

<u>Acipenseridae</u>		
Sterlet	Acipenser ruthenus	3
<u>Osteoglossidae</u>		
South American Arowana	Osteoglossum bicirrhosum	9
Asiatic Arowana	Scleropages formosus	1
<u>Gymnotidae</u>		
Banded Knife Fish	Gymnotus carapo	1
<u>Notopteridae</u>		
African Knife Fish	Xenomystus nigri	18
Clown Knife Fish	Notopterus chitala	1
<u>Sternarchidae</u>		
Black Ghost Knife Fish	Apteronotus albifrons	2
<u>Mormyriadae</u>		
Long Nosed Elephant Trunkfish	Gnathonermus petersi	5
Round Nosed Elephant Trunkfish	Gnathonermus stanleyanus	1
<u>Anguillidae</u>		
Common Eel	Anguilla anguilla	2
<u>Polypteridae</u>		
Birchirs	Polypterus senegalensis	3
<u>Characidae</u>		
Silver Dollar	Metynnis hypsauchen	1
Silver Dollar	Metynnis calichromus	2
Red-eyed Tetra	Moenkhausia sanctae filomenae	5
Black Widow Tetra	Gymnocorymbus ternetzi	22
Glowlight Tetra	Hemigrammus erythrozonus	30
Neon Tetra	Paracheirodon innesi	24
Lemon Tetra	Hyphessobrycon pulchripinnis	7
	Pyrrhulina stoli	24
Bucktoothed Tetra	Exodon paradoxus	4
Emperor Tetra	Nematobrycon palmeri	30
Blue Emperor Tetra	Impichthys kerrei	2
Rosy Tetra	Hyphessobrycon bentosi	30
Blind Cave Fish	Astynax fasciatus mexicanus	25
Silver Tetra	Stenobrycon spilurus	1
Cardinal Tetra	Cheirodon axelrodi	13
Red-eyed Characin	Arnoldichthys spilopterus	6
Long-finned Characin	Alestes longipinnis	16
Congo Tetra	Micralestes interruptus	28
Rummy-nosed Tetra	Hemigrammus rhodostomus	20
Bloodfin Tetra	Aphyocharax anisiti	12
Piranha	Rooseveltiella nattereri	11
Penguin Fish	Thayesia obliqua	3
Black Neon Tetra	Hyphessobrycon herbertaxelrodi	7
Spraying Characin	Copeina arnoldi	2
Platinum Tetra	Geohydrocharax atacaudatus	4
Bleeding Heart Tetra	Hyphessobrycon rubrostigma	12



African Spurred Tortoise
Courtesy of J. Whitworth



Scorpion Fish
Courtesy of K. W. Green, A.R.P.S.

Black-line Tetra	Hyphessobrycon scholzei	7
X-Ray Fish	Pristella riddlei	1
Black Phantom Tetra	Megalamphodus megalopterus	3
Red Phantom Tetra	Megalamphodus sweglesi	2
<u>Anostomidae</u>		
Marbled Headstander	Abramites microcephalus	11
Striped Anostomus	Anostomus anostomus	15
Three Spot Anostomus	Anostomus trimaculatus	1
	Leporinus affinis	1
	Leporinus striatus	5
Pellegrin's Leporinus	Leporinus pellergrini	7
<u>Citharinidae</u>		
Six Barred Distichodus	Distichodus sexfasciatus	1
<u>Gasterapelecidae</u>		
Marbled Hatchetfish	Carnegiella strigata	7
Silver Hatchetfish	Gasteropelecus sternicla	12
<u>Cyprinidae</u>		
Bream	Abramis brama	4
Mirror Carp	Cyprinus carpio	15
Golden Orfe	Idus idus	30
Golden Rudd	Scardinius erythrophthalmus	5
Tench	Tinca tinca	1
Goldfish (Various)	Carassius auratus	80
Koi Carp	Cyprinus carpio	6
Silver Shark	Balantiochelius melanopterus	1
Zebra Danio	Brachydanio rerio	50
Giant Danio	Danio malabaricus	1
Red-tailed Black Shark	Labeo bicolor	24
Black Shark	Morulius chrysophekadion	1
Festive Shark	Labeobarbus festiva	4
Bony Lipped Barb	Osteochilus hasselti	1
Hi-goi Carp	Cyprinus carpio	7
Rosy Barb	Barbus conchoni	15
Cumings Barb	Barbus cumingi	24
Striped Barb	Barbus fasciatus	2
Filament Barb	Barbus filamentosus	1
Spanner Barb	Barbus lateristriga	1
Nigger Barb	Barbus nigrofasciatus	12
Red Cheek Barb	Barbus orphoides	2
Scissor Tail Rasbora	Rasbora trilineata	3
Tiger Barb	Barbus tetrazona	32
Golden Barb	Barbus shurberti	14
Tinfoil Barb	Barbus schwanenfeldi	8
Yellow Barb	Barbus sp	1
Harlequin Fish	Rasbora hetromorpha	24
Red-tailed Scissor Tail	Rasbora caudimaculata	20
Flying Fox	Epalzeorhynchus kallopterus	10
Elegant Rasbora	Rasbora lateristriata elegans	8
<u>Gyrinocheilidae</u>		
Sucking Loach	Gyrinocheilus aymonieri	50

Cobitidae

Skunk Botia

Botia horae 1

Centropomidae

Indian Glassfish

Chanda ranga 3

Australian Glassfish

Chanda agassizi 7

Cichlidae

Jack Dempsey

Cichlasoma octofasciatum 2

Blue Acara

Aequidens pulcher 1

Oscar or Marbled Cichlid

Astronotus ocellatus 1

Texas Cichlid

Cichlasoma cyanoguttatum 4

Convict Cichlid

Cichlasoma nigrofasciatum 3

Albino Convict Cichlid

Cichlasoma nigrofasciatum 8

Banded Cichlid

Cichlasoma severum 4

Blue-eyed Cichlid

Cichlasoma spilurum 4

Red Devil Cichlid

Cichlasoma erythroem 30

Angel Fish

Pterophyllum scalare 13

Discus

Symphysodon discus 7

Burton's Mouthbrooder

Haplochromis burtoni 40

Jewel Cichlid

Hemichromis bimaculatus 16

Maria's Tilapia

Tilapia maria 7

Mozambique Mouthbrooder

Saratherodon mossambicus 1

Zillis Tilapia

Tilapia zilli 1

Hornet Tilapia

Tilapia buttikoferi 2

Rainbow Cichlid

Herotilapia multispinosa 2

Livingstone's Mbuna

Pseudotropheus livingstoni 32

Ocellated Cichlid

Cichla ocellaris 1

Brown Acara

Aequidens portalegrensis 2

Fire-mouth Cichlid

Cichlasoma meeki 2

Rainbow Cichlid

Pelmatochromis kribensis 2

Eleotridae

Chameleon Goby

Hyperselectris guntheri 5

Broad-headed Sleeper Goby

Dormitator latifrons 1

African Goby

Eleotris sp 3

Rainbow Goby

1

Anabantidae

Comb-tailed Paradise Fish

Belontia signata 22

Giant Gourami

Osphronemus goramy 1

Pearl Gourami

Trichogaster leeri 2

Moonlight Gourami

Trichogaster microlepis 5

Three-spot Gourami

Trichogaster trichopterus 14

Tail-spot Climbing Perch

Ctenopoma kingsleyae 3

Croaking Gourami

Trichopsis vittatus 7

Paradise Fish

Macropodus opercularis 1

Atherinidae

Australian Rainbow Fish

Melanotaenia sp 22

New Guinea Rainbow Fish

Glossolepis incisus 1

Celebes Rainbow Fish

Telmatherima ladigesii 40

Bagridae

Bumblebee Catfish

Leiocassis poecilopterus 3

<u>Chacidae</u>		
Frogmouth Catfish	Chaca chaca	1
<u>Schilbeidae</u>		
Congo Catfish	Etropiella debauwi	5
<u>Mochokidae</u>		
Upside-down Catfish	Synodontis sp	8
<u>Pimelodidae</u>		
Catfish	Pimelodus pictus	4
Shovel-nose Catfish	Sorubim lima	2
<u>Malapteruridae</u>		
Electric Catfish	Malapterurus electricus	1
<u>Callichthyidae</u>		
Bronze Catfish	Corydoras aeneus	8
Agassiz's Catfish	Corydoras agassizi	1
Albino Bronze Catfish	Corydoras aeneus	4
Peppered Catfish	Corydoras paleatus	20
Porthole Catfish	Hoplosternum littorale	1
	Corydoras metae	2
	Corydoras arcuatus	1
Arched Corydoras	Corydoras bondi	4
<u>Loricasiidae</u>		
Plecostomus Catfish	Hypostomus plecostomus	24
Bristle-nosed Plecostomus	Xenocara sp	12
Clown Plecostomus	Plecostomus sp	2
Royal Plecostomus	Panaque nigrolinatus	1
<u>Cyprinodontidae</u>		
Guppy	Lebistes reticulatus	40
Liberty Molly	Mollienesia sphenops	50
Tuxedo Swordtail	Xiphophorus helleri	36
Green Swordtail	Xiphophorus helleri	60
Red Swordtail	Xiphophorus helleri	5
Red Wagtail Platy	Xiphophorus maculatus	60
Four-eyed Fish	Anableps anableps	3
Yellow Belly Live Bearer	Girardinus falcatus	20
<u>Goodeidae</u>		
Butterfly Goodeid	Ameca splendens	17
<u>Doradidae</u>		
Talking Catfish	Doras hancocki	1
Spotted Talking Catfish	Doras pectinifrons	2
Striped Talking Catfish	Platydoras costatus	2
Driftwood Catfish	Auchenipterichthys thoracatus	20
Two-spot Catfish		2
<u>Monodactylidae</u>		
Finger Fish	Monodactylus argenteus	1

<u>Ctenoluciidae</u>		
Pike Characin	Boulengerella lucius	1
<u>Potamotrygonidae</u>		
Fresh-water Stingray	Potamotrygon sp	2
<u>Dipnoi</u>		
African Lung Fish	Protopterus annectens	1
South American Lung Fish	Lepidosiren paradoxa	1
<u>Belonidae</u>		
Asian Garfish	Xenetodon cancila	3
<u>Ophichthyidae</u>		
Black Spotted Snake Eel	Myrichthys sp	1
<u>Balistidae</u>		
Picasso Triggerfish	Rhinecanthus aculeatus	1
<u>Pomacentridae</u>		
Common Clown Fish	Amphiprion ocellaris	1
Tomato Clown Fish	Amphiprion frenatus	3
Saddle Clown Fish	Amphiprion polymnus	1
Yellow-tailed Blue Damsel Fish	Pomacentrus melanochir	4
Maroon Clown Fish	Premnas biaculeatus	1
Fire Clown Fish	Amphiprion ephippium	2
Surge Damsel Fish	Glyphidodontops eucopomus	4
Orange-finned Clown Fish	Amphiprion allardi	2
Yellow-finned Clown Fish	Amphiprion clarkii	2
<u>Scatophagidae</u>		
Scat	Scatophagus argus	1
<u>Diodontidae</u>		
Spiny Puff Fish	Chilomycterus antennatus	1
<u>Acanthuridae</u>		
Regal Tang	Paracanthurus hepatus	1
Clown Surgeon Fish	Acanthurus lineatus	1
Yellow Tang	Zebrasoma flavescens	1
Sailfin Tang	Zebrasoma veliferum	1
Chevron Tang		1
Achilles Tang	Acanthurus achilles	1
Moorish Idol	Zanclus canescens	1
<u>Siganidae</u>		
Fox Face	Lo vulpinus	1
<u>Monacanthidae</u>		
Long-nosed File Fish	Oxymonacanthus longirostris	1
<u>Callionyidae</u>		
Psychodelic Fish	Synchiropus picturatus	1

<u>Blenniidae</u>	
Sabre-fin Blenny	Ptereleotris splendidum 2
<u>Pomacanthidae</u>	
Koran Angelfish	Pomacanthus semicirculatus 1
Blue-faced Angelfish	Euxiphipops xanthometapon 1
<u>Chaetodontidae</u>	
Copperband Butterfly Fish	Chelmon rostratus 1
<u>Labridae</u>	
Brown-striped Wrasse	
Bi-colour Wrasse	Hemigymnus melapterus 3
<u>Scorpaenidae</u>	
Scorpion Fish	Pterios volitans 1
Scorpion Fish	Pterios lunalata 1

INVERTEBRATES

<u>Crustacea</u>	
Banded Coral Shrimp	Stenopus hispidus 1
Hawaiian Spiny Prawn	Saron sp 1
<u>Echinoderms</u>	
Slate-pencil Sea Urchin	
Common Star Fish	Asterus spp 2
Red Sea Star Fish	Pentaceraster mammillatus 10
Brown Spiny Star Fish	Protoreaster sp 1
Red Star Fish	
<u>Coelenterates</u>	
Beadlet Anemone	Actina equina 60
Sea Anemone	Stoichactis sp 1
Snake-lock Anemone	Cnidopus verator 3
Tube Anemone	Cerianthus membranaceus 1
Plumrose Anemone	Metridium senile 6
Sea Anemone	Radianthus malu 4
Florida Sea Anemone	Cordylactis passiflora 4
Orange Soft Coral	

STOCK AT 31st DECEMBER, 1983

	<i>Species</i>	<i>Specimens</i>
Mammal	105	674
Bird	158	640
Reptile & Amphibians	73	254
Fish	189	1805
Invertebrates	15	97
	<hr/>	<hr/>
	540	3470

