

CHESTER ZOO NEWS

AND CHESHIRE VISITOR



Rhino section head keeper, John Willis had a dedicated team who hand reared Emma after mother Esther's milk failed. Here Chris Lavender gets ready for the day shift! Other key members were Julian Buffery, Shane Blake, Steve Hogarth, Mark Cleave, Dave Brunger and Louise Baines.

BIGGEST EVER ZOO NEWS

PHOTO COMP — P2-3

WIN A HOLIDAY WITH HAVEN — P8

COLOURING PRIZES WITH DUNLOP — P15

FREE CHILD'S ENTRY TO MARTIN MERE — P11

MERSEY BUS OFFER — P14

TV STAR

Emma gave us a wonderful opportunity to show that the inter-zoo rhino conservational breeding programme really works. The first TV commercial was screened at Whitsuntide. The following day there were holiday crowds queuing to see Emma. At one stage the queue was over 100 yards long! That's conservation power, and shows how important it is for us to tell the public what is happening at their zoo.

EMMA — OUR STAR RHINO

A YEAR OLD AND GROWING UP VERY QUICKLY NOW

Until February 1991 there were just two animals that visitors asked for by name — Jubilee the elephant, and Boris the chimp. But since Black rhinos Esther and Parky produced their first baby, young Emma, she has definitely been the star! Her birth, on February 28 is probably the most important, in conservation terms, the zoo has had for a number of years. Until her arrival, there were only 16 Black rhinos in the UK, in just three zoos — the others are London and Port Lympne. There are less than 3,000 of the breed left in the wild, and

they will almost certainly become extinct in the near future. Emma is the first second-generation Black rhino to be born in the UK — both her parents are zoo-bred. The only hope for the survival of these magnificent animals is in zoo-breeding. **BOTTLE FEED** When Emma was born, the keeping staff hoped mother Esther would rear her own baby. But after a couple of days, it was clear she was not getting enough nourishment, and so the baby had to be hand reared. This meant keepers sleeping in the rhino house for the first

few weeks, in order to bottle-feed every two hours. Nestles came up with a formula close to rhino milk, and the new arrival soon began to thrive. You can see her first year in pictures on page 15. Last year's *Chester Zoo News* featured Black rhinos on the front cover. We didn't know that Emma's birth was imminent did we? That is a secret we share with the Rhino house! The zoo is very grateful to Dunlop, makers of the "Stampa" range of children's shoes, and the Midland Bank for sponsoring our Black rhinos.



Hurry along to Liverpool's Rhino Exhibition See Page 10

EMMA'S FIRST YEAR

- March: Jessica, a Vietnamese pot-bellied pig shares Emma's accommodation, to keep her company. The pair soon form a close bonding. Appearances on *Granada Reports* and *North West Tonight*.
- April: Two-month-old Emma is introduced to the Duchess of Kent, on the occasion of the opening of the metro-rail.
- May: Emma makes a 10 second commercial for the zoo.
- June: Appeared on film on Granada's *8.15 from Manchester*. Also filmed for the "Wildbunch" children's TV programme.
- July: Emma is filmed for a quiz programme, "Quest".
- August: An appearance on Channel 4's "Brookside".
- September: Filmed for "Owl TV".
- October: Appearance on "Opposites Attract".
- November: Featured in Cheshire Tourism video.
- December: Appearance on TV programme "Why Don't You".
- January: Meets the Minister of State for the Environment, Mr David Trippier.
- February: First birthday!

Roberts didn't go ape when they helped to build my new house...

Thanks to everyone who helped build the new Chimpanzee house by collecting Roberts Bread special vouchers.

Roberts

FRANK ROBERTS AND SONS LIMITED
WHOLESALE BAKERS

BUCHEATH, NORTHWICH, CHESHIRE CW9 7RQ
TELEPHONE: NORTHWICH (0404) 41122



ZOO VIEW

CONSERVATION

ALL the serious zoos in the country are using the word "conservation" in their publicity and advertising. We all talk about conservation as being the overwhelming reason for the existence of zoos. But, in zoological terms, just what does the word mean?

On the front page of this paper, you will see that for us, our baby black rhinoceros is a very real interpretation of the word conservation! Slightly less spectacular examples last year were the hatching of two red-crowned cranes; the hatching of three rhinoceros iguanas and the proliferation of Lake Malawi cichlids in the aquarium. All of these are creatures on the brink of extinction in the wild.

Of all the different species that we now take for granted, we do not know how many will be able to survive only through the existence of zoos. We do know that the number will be staggeringly high by the middle of the next century if natural habitats continue to be swept away by man at the present rate.

Every year huge areas of tropical rainforest are destroyed. Millions of tonnes of waste products are dumped into the sea, harming fish and plant life. On land, mammals and birds are poisoned by the pesticides we use on our crops. Until we learn to treat our world with respect, zoos like Chester have an essential role to play in the captive breeding of animals, and in publicising the plight of the animal kingdom.

ENDANGERED SPECIES

Our policy is to support endangered species whenever possible, especially when bringing new species into the collection. Within this conservation policy, we want to have a wide variety of the world's animals, giving a good balance of mammals, birds, reptiles and fish. Chester Zoo has had many breeding successes, including first UK breedings of elephant, dwarf mongoose, jaguarundi, Madagascan tree boa, and many others. Our breeding successes with chimpanzees, red lechwe, margay and ring tailed lemur have also gained wide recognition.

We plan to continue this policy of increasing the numbers of endangered species we are supporting, in the hope that one day, those parts of the world that were their original habitat, will again be safe for native wild-life. In the meantime, zoos have a vital role to play.

WHO OWNS THE ZOO?

THIS is a question we are frequently asked.

Many of our visitors believe the zoo belongs to the council, and is funded from public money in some way. The truth is that Chester Zoo is run by the North of England Zoological Society, a registered scientific and educational charity, which has to be totally reliant on its own trading for its income. Our main source of income for the vast expense of feeding, heating and housing our animals is through the gate price — and we have to give back 17.5% of that to the government in V.A.T.!

PHOTO SPECIAL PHOTO SPECIAL



ABOVE: The safari winning shot for 22 year old David Clarke from Alsager, near Stoke. With results as good as this on his first days shooting with his new Canon EOS 35mm camera — we look forward to David's safari portfolio!

Photo Special

THERE were over 1700 entries in our photographic competition last year — more than ever before, and giving the judges a very difficult task.

The 1991 winner of the title "Chester Zoo Photographer of the Year" is 22 year old David Clarke of Alsager, Stoke on Trent. His lovely slide of two young orang-utans was one of the last entries received. It was the only entry he sent in — and one of the first taken on a newly-bought Canon camera!

"I came to the zoo with a friend, because I knew it would be a good place to try out the new camera. I didn't even know there was a photographic competition!" he said.

David will be sharing his prize — a fabulous Sunmed Go Kenya safari holiday — with his father.

The prize for the best print — a Canon camcorder — was awarded to Mr Ron Patterson of Launceston in Cornwall, for his appealing photograph of a doucouli.

The Junior Photographer of the Year is 15 year old Rachel Hankinson, of Thornton Hough, Wirral, for her classic picture of Sheba the elephant (below) stealing roses. Rachel wins the Scandinavian Seaways family holiday to Legoland in Denmark.

The best picture of the zoo's gardens was taken by Ken Thornton of St Helens, Merseyside, and he wins the Bridgmere Garden World trophy and voucher.

The beautiful lion portrait, (left), won the second prize, slides section, for Graham Roberts of Saltney Ferry, Chester.

Other major prize winners were Christopher West, of Windermere in Cumbria: second prize in the prints section, for a photograph of an orang-utan, and Christopher Marsden, Great Sutton, who was the Junior runner-up for a print of a kookaburra.

The zoo is grateful to Fishwicks of Haydock, Ness Photo Laboratories of Widnes and British Rail's Regional Railways for consolation prizes for the competition.



EVERYONE ENJOYS



THE REAL **MCCOY'S**

EXTRA THICK & CRUNCHY POTATO CHIPS

Original

& NOW BARBECUED BEEF

Cearns & Brown Ltd

Specialist Distributors to the Catering Trade



FOR THE HUNGER OF A WOLF THERE'S NO OTHER CHOICE BUT CEARNS & BROWN

DISTRIBUTORS OF QUALITY PRODUCTS TO THE CATERING INDUSTRY. WE ARE NO SHEEP WHEN IT COMES TO FEEDING TIME AT THE ZOO.

1991 WAS A ROARING SUCCESS FOR CHESTER ZOO AND WE LOOK FORWARD TO A WILDER 1992



WHITEHOUSE, RUNCORN, CHESHIRE WA7 3BL
TEL: 0928 712345 FAX: 0928 71582

COUNTRY RANGE

A member of Countrywide Catering Distributors

■ ■ PHOTO SPECIAL ■ ■ PHOTO SPECIAL ■ ■ PHOTO SPECIAL ■ ■ PHOTO

SAFARI — ONE OF THE ULTIMATE PLEASURES

Win wonderful prizes with your camera

Go Kenya Safari



IN 1993, you could be going on a fantastic "Go Kenya" holiday with Sunmed; or shooting your own videos with a new Canon camcorder; or visiting Denmark and Lego-land — just for taking a photograph in the zoo!

The 1992 competition is offering some fantastic prizes. It runs until the end of October, and any photographs taken in the zoo during 1992 will be eligible. Competition forms with full details will be available before Easter. In addition to the major prizes, we will be giving monthly merit prizes of film and zoo tickets, so it is worth while getting your entries in early.

First prizes for prints is a Sunmed Go Kenya holiday for two, including one week in the luxury of the three star Giriama Hotel at Bamburi Beach and one week on Safari.

The trip starts in Mombasa, and includes the National Parks of Tsavo West, Amboseli and Masai Mara, during the safari, accommodation will be in comfortable lodges, and the game drives will be in a nine-seater safari bus — but only seven people or less will be travelling, so that everyone is guaranteed a window seat! Paradise for any keen photographer.

After the excitement and the early morning calls of the safari, there is a sight seeing tour of Nairobi, before taking the overnight train to Mombasa, with a first class sleeping compartment.

The second week is spent relaxing in your hotel by the silver sands of Bamburi Beach, where the maid pops in to keep things tidy — and the monkeys pop in to mess things up!



Canon's top Camcorder

FIRST prize for slides will be Canon's top-of-the-range Canovision EX1 Hi video camcorder, incorporating the new VL Mount System with interchangeable lenses from wide-angle to super telephoto. Still photographers have long made use of a wide array of lenses, and this new system makes this luxury available to the video enthusiast. It provides the kind of creative versatility previously only enjoyed by the professional filmmaker.

FILM IN THE ZOO

DID you know that the zoo sells enough film for visitors to take 9 million photographs every year?

So every shop in the zoo has Kodak film ready for you — plus batteries and video cassettes too. There is the widest choice in the Fountain, where we have slide film — Ektachrome and Kodachrome plus a selection of top selling Kodak camera — including the amazing FUN range.

LIONS 'N' LEGO



JUNIOR Photographer of 1992 will be taking the family on a trip to Denmark. This is a four night tour with Scandinavian Seaways, taking in a visit to the Givskud Safari Park and the fabulous model world of Legoland. The trip is for two adults and two children under 16 years.

Kodak

FILM FOR PRINTS & SLIDES BATTERIES VIDEO TAPES CAMERAS

Kodak
Official Sponsor of the 1992 Olympic Games

FROM ALL ZOO SHOPS

■ ■ PHOTO SPECIAL ■ ■ PHOTO SPECIAL ■ ■

Canon

60 MILLION CAMERAS SINCE 1935

Enough to capture anyone's imagination.

HOW TO ENTER

Pick up an entry form at the Zoo or send sae to:
Zoo Photo Comp,
Chester Zoo,
Upton-by-Chester
CH2 1LH.

FLY TO EUROPE

RUNNERS up prize for prints will be two return tickets on British Airways Euro Club class to your choice from over 20 direct European destinations from Manchester.

The UK's largest garden centre, Bridgemere Garden World, near Nantwich, will present the shield for the best photograph of the zoo's gardens, plus a voucher to spend at the nursery.

British Rail will be offering free travel vouchers and prizes have also been promised from Ness Photographic Laboratories (the zoo's processing lab) and Fishwicks the leading photo retailers with shops in Chester, Haydock and Lancaster.

BRITISH AIRWAYS



Des. res., near the sea, colour TVs, saunas, solariums, open-terraces, swimming pools, natural beaches, sailing from £186.

(facilities may vary between summerhouses)

SELF-CATERING HOLIDAYS IN DENMARK, SWEDEN OR GERMANY.

Step aboard a sleek, white liner and drive to your summerhouse overlooking some of Europe's loveliest landscapes or the seashore. They're superb places to stay, some boasting private pools and even saunas.

With first class cuisine, top notch service and excellent leisure facilities all the way. Send for a brochure or call 0753 696600 quoting reference MCZ1.

Please send me my Scandinavian Seaways Brochure. Send to Scandinavian Seaways, Dept. MCZ1, PO Box 138, Northampton NN1 1WB.

NAME (PRINT NAME) _____ MCZ1
ADDRESS _____
POSTCODE _____

THE SCANDINAVIAN SEA WAY SCANDINAVIAN SEAWAYS

I WANT A BED IN BATH!
I WANT WIND-SURFING IN WIGAN!
I WANT HANG GLIDING IN HALIFAX!
I WANT A BATH IN BED!

**WHATEVER YOU WANT!
 WHATEVER YOU NEED.**

...the Chester Town Hall Tourist Information Centre has the answers!
 For stamps and films, walks and souvenirs, maps and guides, or tickets for theatres and coach trips, and lots, lots more.

POP INTO THE TOWN HALL TOURIST INFORMATION CENTRE, TODAY!
 Open: 9am-5.30pm Mon-Sat (7.30 May-Oct); 10am-4.00pm Sun
Tel: 0244 318356

□□□ **HIGH QUALITY,** □□□
LOW COST PICTURE FRAMING!

David Raynor
 (Picture framer to Chester Zoo)

TEL: 051 334 3897

'There's something for everyone!'...

NORTHGATE Leisure Centre ARENA

- **Leisure Pool**
 With exciting waterslide and other special features
- **Martial Arts**
 A selection of nine different Martial Arts
- **Fitness Classes**
 Weight training, Aerobics, Popsmobility, Aquarobics and Circuit training everyday
- **Sports**
 All recquet sports and full range of sports and activities courses and classes
- **Events**
 Exhibitions, shows, concerts, conferences, meetings and social functions
- **Sauna Suite**
 Saunas, Steam Room, Sun Beds, Beautician and Relaxation
- **Cafe and Bars**

Details and Information from reception or Phone Chester 380444

OPEN 7 DAYS
Easy to get to FREE Parking
Northgate Arena
 Victoria Road, Chester



CHESHIRE VISITOR SPECIAL FEATURE



Pic Cheshire County Council

SO MUCH TO SEE AND DO IN CHESHIRE

The Zoo — and much more

USE Chester as a base, and you will find you are in easy reach of so many great places to visit, you'll need another trip to fit them all in!

The zoo is the biggest tourist attraction in the area, and you will need a full day to see all its delights. After that, the choice is enormous!

Make your first call to Chester Visitor Centre — telephone 351609 — where the staff will help you find accommodation, at all price levels, and give you all the information you need about the area and its attractions.

For a day out, there's a tremendous choice. Try Cheshire Candle Workshops, The Boat Museum, Ness Gardens, Arley Hall, Stapeley Water Gardens, Tatton Park, Jodrell Bank and Bridgemere Garden World Venture just across the border into North Wales, for Chirk Castle and Erddig Hall.

The best way to see the city itself is on foot. Chester's tourism officer Gerald Tattum says 'that walking the walls of Chester is like seeing the sights of London by double-decker bus, and an experience not to be missed!' The walls encircle a rich legacy of architectural splendour, including the unique, world-famous "Rows" — two tier galleries of shops dating from the Middle Ages, lining both sides of the main thoroughfares, which themselves were marked out by a Roman engineer c79 AD.

On your 2 mile stroll around the walls, you'll come across the largest Roman amphitheatre ever uncovered in Britain. You will see Chester Cathedral, which is celebrating 900 years of history in 1992 with a host of events, including a production of the Chester Cycle of Mystery Plays. And you will pass the Roodee — once the site of the massive Roman harbour, now a racecourse where the oldest horse races in the country take place and the horses run anti-clockwise.

Cheshire has a lot more to offer visitors. South Cheshire is responsible for its gardens and its cheese! In the heart of Cheshire you'll find some fascinating heritage, including the salt story of Northwich. Towards the east are the Peaks and Plains of the county, famed for its silk and textiles and county houses and gardens. Around the Dee and Mersey estuaries is Cheshire's waterfront, with its canals and the Catalyst — the fascinating museum of the chemical industry at Widnes.

Cheshire Tourism Unit: 0244 603127. Chester Tourism: 0244 324324.

CHESHIRE FARM REAL DAIRY ICE CREAM

ENJOY A FAMILY OUTING WITH A DIFFERENCE

Offering a choice of over 30 flavours of ice cream and sorbets. Enjoy a cone in the shop or why not take home one of our handy freezer packs?

And there can be few better ways of satisfying your appetite than a trip into Caroline's Pantry. Enjoy morning coffee with toasted teacakes, buttered scones.

At lunchtime tuck in to the tasty toasties, the freshly made sandwiches or a real Cheshire Farm Lunch — Cheese and pickles, salad and fruit, served with fresh bread.

As for afternoon tea — it defies temptation. Scones and strawberry jam served with clotted cream.


Look out for the specials too — like prawn salads. Baked Potatoes

And just to top it all off you can also take home preserves and dairy produce, biscuits, crafts and gifts

FREE ENTRY

Evening bookings by appointment
DRUMLAN HALL
 Newton Lane, Tattenhall, Nr. Chester.
 Tel: (0829) 70995
 Opening Hours — 7 day week 10.5pm (until end of March); 10-5.30pm (April onwards)
 LAST ORDERS 1/2 HOUR BEFORE CLOSING
 FOLLOW SIGNS FOR ICE CREAM FARM

Cadbury's.
THE CHOCOLATE.
THE TASTE.



AVAILABLE AT ALL ZOO KIOSKS

O — t h e Oakfield



at
Chester Zoo

The elegant, oak-panelled restaurant in the Victorian Oakfield House at the zoo is the perfect place for a restful, waitress-served lunch.

It's also the venue for a series of fun themed evenings throughout the year.

Ideal for
CHILDREN'S BIRTHDAY PARTIES
BUSINESS LUNCHESES
WEDDINGS
AND OTHER CELEBRATIONS.

Ring the party Booking Office for more details
0244 380280

ON TOP OF THE ZOO



YOU SEE SO MUCH MORE

SEE THE Zoo from new heights! The Zoo-fari Overhead Railway opened for the first time last August, giving visitors a completely new aspect over the gardens and animals enclosures.

The railway is completely computerised — no driver! — and is the first of its kind in the UK. The carriages are heated during the winter months, and fully ventilated in the summer, giving a comfortable ride whatever the season.

Many visitors never manage to see the wide variety of animals on the far size of the zoo, because it involved a lot of walking. Now, you can take the train at Jubilee Square station, alight at the Monkey House station, and visit the ostriches and emus, the reindeer and the gnus and all the other creatures who live in the distant corners of the zoo!

On your journey, there is a

synchronised commentary to tell you about the animals you can see through the windows. It's quite a thrill to look down on prowling lions, with no barrier to mar the view!

We've kept the fare at the same price as last year, and with four trains running, you will not have to queue for long, even on the busiest days.

BREAKAWAY

THERE can be few counties that offer as much as Cheshire for weekend breaks.

Chester has been welcoming visitors since Roman times, and a weekend break won't be long enough to explore the 2,000 years of history. Walk round the famous City Walls, and explore the shops on the Rows — the two tier galleries dating from the middle ages.

Cheshire, though is more than Chester. From the craggy hill country of the Pennines foothills in the east, to its estuary shores in the west, Cheshire boasts a range of history, scenery and attractions unsurpassed in Britain.

Both Chester City and Cheshire County produce excellent brochures with details of accommodation from the warm welcome of the small bed-and-breakfast establishments to the grandeur and luxury of four and five star hotels.

Cheshire Tourism & Marketing Unit, Cheshire County Council, Commerce House, Hunter Street, Chester CH1 2QP. Tel: 0244 603128.

Cheshire County Tourist Unit, Commerce House, Hunter Street, Chester CH1 2QP. Tel: 0244 603127.

NEWSLINE

BRIDGEMERE GARDEN WORLD
Nr. Nantwich, Cheshire
Tel: (093 65) 381 or 239

THE Greatest Gardening Day Out in Britain.

Bridgemere rolls out acre upon acre of gardens, plants, glass-houses and shop with an Egon Ronay recommended coffee house. Visit the Garden Kingdom, five acres and more than 20 styles of garden — the romance of a French garden, the music of waterfalls and pools, the quiet charm of shade loving plants and recreated Chelsea Flower Show gold medal winning gardens, all to give you ideas for your own garden.

Location: Bridgemere is on the A51 between Woore and Nantwich on the Cheshire, Staffordshire, Shropshire borders. Signposted from the M6 junctions 15 and 16.

Opening times: Daily until dusk — 8 summer, 5 winter (closed Christmas Day and Boxing Day). Free admission, car and coach parking. Small admission charge into Garden Kingdom.

SPACE YEAR

IN "International Space Year" the Earth and Space experience on offer at Jodrell Bank Science Centre and Arboretum is a "must".

From that first awe-inspiring view of the mighty Lovell radio telescope as you step out of your car, you are led to question the very nature of the Universe through fascinating displays and exciting "hands-on" scientific exhibits.

The only British Industry in Space Year 92 exhibition in the North invites you to "Walk through Space" as a working environment of satellites and space probes. Back on earth, it's much more than a pleasant experience in the 35 acre Arboretum and the "Tree Planet" display of the Environmental Discover Centre. Details: 0477 71339.

ZOO IDEAS HAVE YOU THOUGHT OF BECOMING A ZOO MEMBER?

There are lots of benefits, including a season ticket to the zoo for the whole year; the opportunity to buy half price tickets for friends; invitations to members' meetings, and copies of the zoo's quarterly colour magazine, *Chester Zoo Life*.

Junior Membership is a great gift for your youngsters. Their membership card gives them free entry into the zoo all year, and there are some exciting activities exclusively for our Junior Members, including a day helping a keeper and the annual "touch session". Ring the Membership Office for details: 0244 380280.

Enjoy a Day Out in CLWYD

Take the family to Clwyd for the day, and you'll find enough treasures and pleasures to bring you back time after time. Clwyd will always bid you the warmest of welcomes!

Bodelwyddan Castle

- National Portrait Gallery Collection
- Authentic Victorian Interiors
- Exhibition of Welsh Landscapes
- Formal Gardens
- Adventure Woodland
- Restaurant and Victorian Tearoom

0745 583539



Ruthin Craft Centre

- Licensed Restaurant
- Disabled Facilities
- Open 10-5pm Sunday to Saturday

Park Road, Ruthin, Clwyd
Telephone: (08242) 47745675



Bersham Industrial Heritage Centre

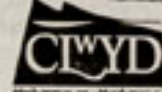
See where John 'Iron Mad' Wilkinson built up the existing Ironworks into an international concern. Situated on the famous 18th Century Ironworks.

0978 261529



LOGGERHEADS COUNTRY PARK

Telephone (0352 85) 586



CHESHIRE VISITORS SPECIAL FEATURE

DAILY POST

The Award Winning Newspaper that towers above the rest



ORDER A COPY FROM YOUR NEWSAGENT

The Daily Post is THE morning newspaper for Cheshire, North Wales and Merseyside.

COAST to COAST



- country parks... sailing school...
- Hilbre Islands nature reserve...
- coastal park and lighthouse...
- golf and international events...
- New Brighton regeneration...



- promenade walks... heritage trail...
- visitor centre and famous ferries...
- history and culture...
- dockland redevelopment...
- spectacular Mersey views.

Contact: Carole Jackson

Metropolitan Borough of Wirral
Department of Leisure Services and Tourism
Westminster House • Hamilton Street • Birkenhead • Wirral L41 5FN • Tel: 051-647 2366



EuroWirral92

CHESHIRE

ONE DAY SAFARIS INTO UNEXPLORED TERRITORY

It's all very civilized (and we'll even provide a colour guide)

DAYS OUT IN CHESHIRE

There's nowhere quite like it!

The DAYS OUT IN CHESHIRE GUIDE is available from your nearest Tourist Information Centre or complete and return the coupon below.

Tourist Unit, Cheshire County Council, Commerce House, Hunter Street, Chester, CH1 2QP. Tel: 0244 603127

Please send me a copy of the 1992/93 DAYS OUT IN CHESHIRE GUIDE

Name _____ Address _____ Post Code _____

Blooming Good Year

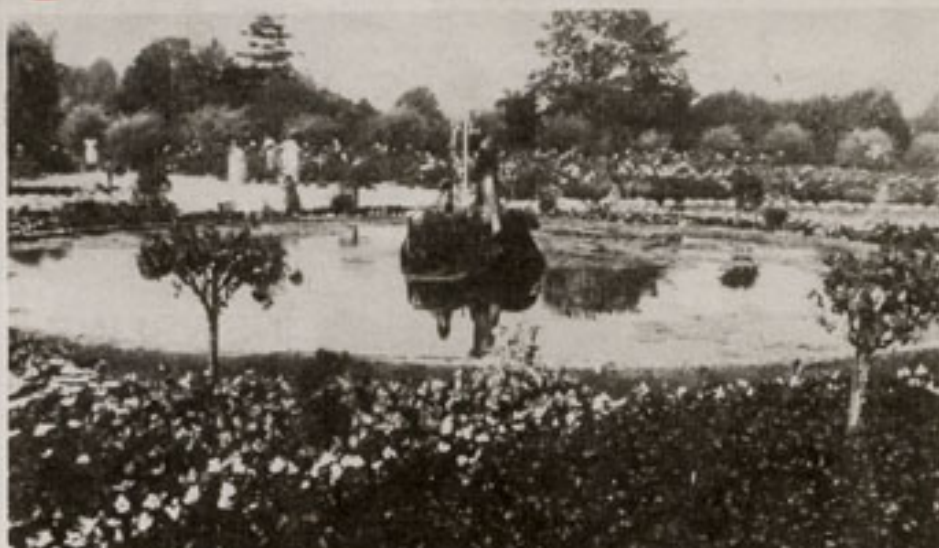
LAST YEAR was another glorious one for Head Gardener Eric Rudman and his team.

The zoo's gardens, as always, brought thousands of appreciative comments from visitors. The indoor planting in many of the animal houses, adds enormously to the environment for the animals and visitors alike. The Tropical House, with its warm, damp atmosphere, has a wonderful collection of exotic plants and shrubs, including banana trees.

For the fourth time in six years, the zoo won the award for the best large tourist attraction in the Britain in Bloom competition. And a second silver medal was won at the Chelsea Flower Show, together with partners Tatton Park, Arley Hall, Ness Gardens and the Arboretum at Jodrell Bank.

Eric also achieved TV stardom in the Autumn, when he appeared on Granada Television's, The Green Life Programme, praising the power of elephant manure — better known as Zoo Poo — for mammoth results in growing practically anything! With Presenter Alistair McDonald, Eric donned a white coat, and discussed the relative merits of offerings from Harvest mice, monkeys, wallabies, tigers, and elephants!

Following an overwhelming demand for the stuff as a fun Christmas present, can we please stress that Zoo Poo is available for personal shoppers only! It costs £2.00 for a large bin-bag full, and seriously folks, it's the best there is!



Famous Ferries Fun

LIVERPOOL'S famous Mersey Ferries are looking forward to a fun-packed 1992 with their second years of sightseeing cruises and special events.

Easter cruises, with on-board Easter Bunny, egg hunts and bonnet parades, will launch the new season of themed cruises with everything from Rocky Horror to Sunset Specials.

The Tall Ships return to Merseyside in August, and the

Ferries will provide a unique vantage point as the river comes alive with splendid vessels and celebration fireworks.

Back on dry land, the New Sub-Marine Aquarium at Seacombe Terminal has seen many an intrepid visitor handling live lobsters, coming face to face with the conger eel and discovering what lurks beneath the famous river.

Further details, telephone 051-630 1030.

ON TOP

PROBABLY Britain's most beautifully sited zoo, the Welsh Mountain Zoo is found in a 37-acre garden site on a hilltop high above Colwyn Bay, with spectacular views of the Conwy Valley, Snowdonian Mountains, Anglesey and the North Wales Coast. The animals are carefully presented in natural settings of gardens and woodlands.

Always popular are the famous Falconry Displays (summer only) and the Californian Sealions performing their tricks during feeding time.

A major new attraction is the spacious Chimpanzee World complex. This features the unique Chimp Encounter, an ultra-modern animatronic presentation telling the story of the chimpanzees by means both humorous and educational.



WIN HER HEART WITH A

BEAST

Wall's
ICE CREAM

OR ALL THE OTHER FAVOURITES FROM KIOSKS AND CAFÉS ALL ROUND THE ZOO

GIVE US YOUR TIME?

Volunteer help is always needed in Education Division

IF YOU have a few spare hours and an interest in people and in animals, you could join our F.E.D.S. — Friend of the Education Division Services.

Zoo volunteers get involved in all sorts of activities, including guided tours, brass rubbings, children's craft activities, puppet theatre, "touch" trolleys and the annual Christmas Journey.

Full training is given on all these activities. You don't need any previous experience, and you don't need to commit your time every week. Even a few hours once a month is appreciated.

It's a wonderful way to get to know new people, and the F.E.D.S. organise several social activities, including trips to other zoos.

If you would like to come along to the next get-together of prospective volunteers — with no obligation of course — please ring the Education Division at the zoo, 0244 380280.



NEVER ON A FRIDAY

ONE of the most frequently asked questions is 'Why don't you feed the Lions on Fridays?'

The answer — it is better for them to have one 'starve day' in the week for Lions as 'gorge feeders' and don't feed every day in their native Africa.

THE FULL ZOO STORY

CAN YOU identify each of the Asian elephants by name? Spend a few minutes studying the signs hanging in the Elephant House, and you'll discover it's easier than you think!

The panels give easy-to-read information about Asian elephants in general and individual details of the animals at Chester. Shown here is Sheba's information board.

There are similar panels in the Rhinoceros House, spelling out the plight of Black rhinos in the wild, and featuring the birth of our famous baby Emma.

The panels were designed and written by zoologist and journalist Colin Tudge, and the illustrations in the elephant house are by Elephant Keeper Phil Whalley in the Rhino House, by our Senior Keeper John Willis.



Open from 10am Every Day (Except Xmas Day)



NEWSLINE

Cheshire Farm Ice Cream

WHERE can you taste real dairy ice cream, made from milk and cream from the producer's own dairy herd? Take a trip to Tattenhall Dairy Products, who make this superb product under the brand name "Cheshire Farm."

The dairy is situated just outside the picturesque village of Tattenhall, and visitors are welcome to see the dairy farm at work. Through a viewing gallery window, you can watch the 300 dairy herd being milked, and on most weekdays, you can see the final freezing and packing stages of the ice-cream manufacture.

A tasting session of some of the wide range of flavours is irresistible, and there's also home-made food available at Caroline's Pantry. Phone 0829 70995.

Ness Gardens

NESS Gardes is a magnificent collection of trees and shrubs, with something of interest and beauty in every season. The gardens were founded by A. K. Bulley, the 20th century's leading plant collector.

Today they are the University of Liverpool's Botanic Gardens. There's a unique collection of azaleas and rhododendrons, and Ness is particularly renowned for its rock and heather gardens.

It's a great family day out, with something for everyone — a nature trail, exhibitions and slide sequences in the Visitor Centre; picnic areas; children's adventure play area; restaurant and shop and plant sales area. Ring 051-336 2135 for details.

Northgate Arena

IN ancient Rome, all entertainment was focused around the Arena. Now, 2,000 years later, the arena is still the centre of excitement — the Northgate Arena, in Chester. You won't find lions and gladiators, but you will find a whole world of leisure activities.

There's a swimming pool; sauna/steam room; sunbeds; weight room; squash courts; tennis courts — the list is as long as a Roman road!

Northgate Arena, Victoria Road, Chester. Free parking for 100 chariots!

TREBOR BASSETT the first name in sweets



4 oz BAGS Available in the Shops and Kiosks within the Park.



AVAILABLE FROM BOTH THE JUBILEE AND OASIS CAFETERIAS

All Supplied to Chester Zoo by

PREMIER BRANDS FOODSERVICE

SPECIAL SUPPLEMENT TO CHESTER ZOO NEWS

TIGER CLUB TIMES

Action, Fun and Adventure for children aged 5-13 who holiday with Haven!



WIN A FAMILY HOLIDAY See p8

DID YOU KNOW?



SWIMMING Very few cats like the water — but tigers love it. They often lie in shallow pools to cool off, or to get away from flies.



THE tigers at Chester are Siberian — the largest of all living tigers. There are less than 200 of them left in the wild.

A tiger's canine tooth is at least 10 times longer than the biggest human tooth.



JUMPING A tiger can leap 9 metres over level ground or jump 4.5 metres in the air.



BIG LICKS! A big, hungry tiger, in the wild, can eat about 45 kilograms of meat at one sitting. That would be like a 10 year old human eating 40 hamburgers in one meal — any challengers? so they drink a lot of water too! Photo by Mrs Angela Mansell — a prize winner in the 1990 Photo Competition.

GRREAT TIME AHEAD WITH HAVEN'S TIGER CLUB

RORY the Tiger is the mascot for Haven's exclusive Tiger Club.

All 5-13 year old Haven Holiday-makers are automatically members, and entitled to join in all the fun and programmes arranged just for them. There are games, discos, competitions, treasure hunts, and the chance to win super prizes and Tiger Club certificates.


BUSY YEAR

Some of the Haven holiday parks even have special "Tiger Rooms" and when it's time to leave, the members can still keep in touch through the Tiger Penpal Club.

It's going to be a busy year for Rory, because he will be taking his travelling road shows around the country, visiting lots of the Haven parks. Rory's Musical Fun Show is great entertainment for all the family, and the Magical Fun Show is a dazzling spectacle of music and mystery.

KEEPERS CORNER


SIBERIAN TIGER




THE SIBERIAN TIGER IS THE LARGEST MEMBER OF THE CAT FAMILY. IN THE FORESTS OF SIBERIA, THEIR MAIN HABITAT THE GROUND IS OFTEN COVERED WITH SNOW FOR UP TO 6 MONTHS A YEAR, AND THE WINTER TEMPERATURE CAN DROP TO BELOW -40°C.

SIBERIAN TIGERS ARE SOLITARY ANIMALS, AND GOOD SWIMMERS.

SIBERIAN TIGERS ARE VERY RARE IN THE WILD AND ARE LISTED AS ENDANGERED. THEY HAVE BEEN NEARLY HUNTED IN THE PAST FOR THEIR SKIN. LARGE AREAS OF THEIR HABITAT HAVE BEEN CLEARED. TODAY THEY ARE PROTECTED AND FUR HUNTING IS ILLEGAL.



IN APRIL 1990, THE THREE NEWBORN PUPPETS AT CHESTER ZOO GAVE BIRTH TO ONE MALE AND ONE FEMALE CUB.



HAVEN - UK'S NO. 1

Below: Rory the Tiger and friends



WHAT CHOICE — 41 PARKS OFFER OVER 800,000 HOLIDAYS

HAVEN is the largest UK self-catering operator, with 41 sites, and over 800,000 holidays on offer this year.

With an investment programme of over £27 million already under way, Haven's holiday parks lead the UK holiday market with the number of locations on offer. The Haven programme now includes the parks and centres previously known as Warner self-catering.

The holiday parks are divided into four categories: all action centres, family parks, character villages and hide-away parks. They vary in size, accommodation, type of entertainment and facilities according to those categories, so there's always plenty of choice, whether you are looking for a little bit of peace and quiet, or non-stop daytime and evening family entertainment.

POPULAR

Caravan accommodation is still the most popular paid-for holiday accommodation — and holiday makers expect high standards today. Haven has an annual replacement programme, with no unit older than 5 years, and they are continuing to add new caravans with microwaves, fridge freezers, radio cassette players and colour televisions. Most Haven parks have heated indoor pools, sports halls, playrooms for the under 5s, launderettes and a range of restaurants, shops and entertainment.

Haven's self-catering holidays break away from the daily routine, and provide facilities you can dip in and out of as you please. Daily sport and leisure activities during the day for all the family, and a full programme of evening entertainment with shows and cabarets are all provided free of charge. In addition to well-known stars such as Cannon and Ball and Tom O'Connor, you can enjoy some of Haven's special Starburst Weekends, which this year include Keith Chegwin's Family Funtime, Mersey Nostalgia, Celebrity Challenge and rock 'n' Roll Revival — all included in the price of your holiday.



Above: Come on in, the water's fine!

ZOO FAVOURITES TIGERS ARE TOPS SAY VISITORS



A recent visitor survey revealed that tigers are the most popular animal in the zoo — just ahead of chimpanzees and orangutans.

Could it be that despite their size, strong jaws, huge teeth, massive feet and long, sharp claws, they still remind us of our domestic cats at home?

Perhaps it's because they have many of the qualities people admire most in animals — they are beautiful, graceful, intelligent and independent creatures.

Nataasha and her cubs

Haven

LUXURY CARAVAN & CHALET HOLIDAYS IN ENGLAND & WALES

the family choice

DIAL-A-BROCHURE 0883 340721
DIAL-A-BOOKING 0442 233111
OR SEE YOUR TRAVEL AGENT



Above: Fun indoors!

UNIQUE ADVICE

FOUR years ago, Haven became the first operator to recognise the importance of satisfying children's holiday needs, by establishing a consultative children's board of directors to advise the main board!

The Children's Board is made up from members of the Tiger Club, open to all children aged between five and thirteen, and each year the Board meets to discuss children's likes and dislikes at home, at school and on holiday.

Their recommendations are all considered, and many have put into operation — for instance: No smoking areas, more use of recyclable materials, children's reading areas, healthy foods and salads, satellite TV, nationwide penpal club, daytime discos.

Last year, the Board held their meeting at Chester Zoo, and took a break from their discussions to meet Orna, Nataasha, Strelka and Korla — the zoo's Siberian tigers.

HAVEN ADOPT TIGERS

ALL Tiger Club members have a share in a real, live tiger at Chester Zoo! Haven Holidays have adopted the tigers on behalf of Rory and the Club members. The adoption fee covers the tiger's food bill for one year. The zoo is an easy day's visit from Haven parks at Ty Mawr, Prestatyn Sands or Beacon Fell, and we hope all Tiger Club members from those sites will be able to come along and meet "their" animals!

WIN YOUR '93 FAMILY HOLIDAY!

It's so simple! Win a one week self-catering holiday for up to six people at any Haven UK park in 1993 (subject to availability).

Pick up the Haven brochure from any good travel agent to see the huge choice!

We've scrambled up five well known wild animal names. Just unscramble them, and write your answer in the special entry form box at the bottom of the page. First all correct answers drawn wins the holiday at the park of their choice.

1. PEALTHEN
2. GRITE
3. MALAL
4. DECOOLRIC
5. NANAU-GROT

RULES:
1. Competition open to all readers except employees of Haven and Chester Zoo. By entering, you agree to be bound by these rules.
2. Entries to be sent Zoo Holiday Competition, Haven Holidays, Swan Court, Waterhouse St, Hemel Hempstead, Herts HP1 1DS to arrive by Tuesday, 1st September, 1992. Only one entry per household.
3. First all correct answer opened on 2nd September, 1992 wins the holiday.
4. No cash alternative. The decision of the Marketing Manager of Haven Holidays is final. Winner's name sent if you send SAE with your entry.

CUT OUT THIS ENTRY FORM AND SEND TO:
ZOO HOLIDAY COMPETITION,
HAVEN HOLIDAYS, SWAN COURT, WATERHOUSE STREET,
HEMEL HEMPSTEAD, HERTS HP1 1DS
to arrive by 1st September, 1992.

The animals are:

1..... 2..... 3.....
4..... 5..... Age.....

Name.....
Address.....
Post Code..... Tel No.....



AT A GLANCE

- The largest UK self catering operator with 41 sites
- Over 800,000 holidays on offer for 1992
- Number one for family holidays, with the popular Tiger Club
- Highest quality caravan, chalet and apartment accommodation
- More indoor pools than any other operator
- A capital expenditure programme of over £50 million over the last three years

VITAL ROLE OF ZOOS

THERE are probably more Siberian tigers in zoos across the world than are left in the wild state.

They will almost certainly become extinct in the wild over the next few years, but because of the success of zoo-breeding, this is one more species that has been saved by zoos.

Sadly, much of the wonderful wild-life we take for granted nowadays is disappearing at an alarming rate. For many species, zoo breeding is their only hope of survival.

Those species which are in greatest danger of extinction are listed in the Red Data

Books of the International Union for the Conservation of Nature. Chester Zoo is aiming to breed as many of these species as possible, along with species which are likely to be added to the list in the near future.

At present our collection includes over 50 species of mammals, birds, fish and reptiles which are Red Data Book listed. These include orang-utans, Rodrigues fruit bats, Madagascan tree boas, rhinoceros, chimpanzees, Waldrapp ibises, Jamaican boas, elephants, Rothschild's mynahs and Black spider monkeys.



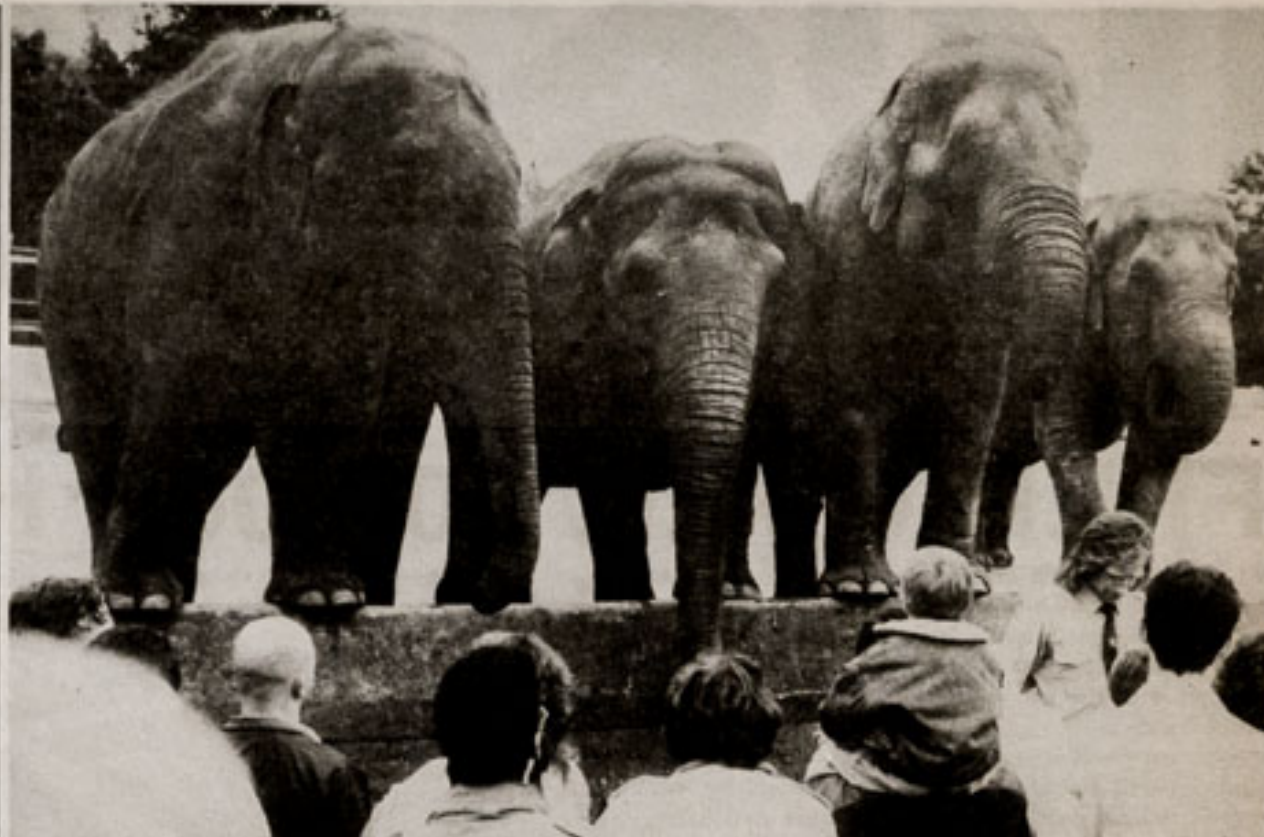
These two young chimps are from another Federation Zoo — Southport. Jamie and Tuzo are close friends and enjoy playing together.



BROOKSIDE

THE zoo was delighted to welcome Channel 4's popular programme "Brookside", in the summer. It was "Leon's" birthday treat to spend the day at the zoo. Visitors were intrigued to find a TV drama being acted out in front of them, and "Sinbad" was in constant demand from people who wanted to have photographs taken with him!

Our picture shows Leon sharing a special cake with the elephants. From left: Sinbad, elephant keeper, Mick Jones, Mike, Leon, Gemma and Marcia.



FEDERATION LINKS THE BEST ZOOS

CHESTER ZOO is a member of the Federation of Zoological Gardens of Great Britain and Ireland.

This organisation was founded 25 years ago, to bring together the work being achieved at zoos across the country. As more and more animals join the long list of endangered species, so joint management of species becomes more and more important.

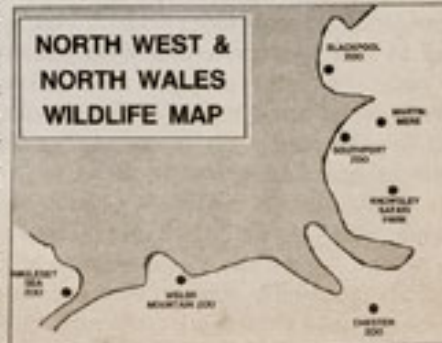
No one zoo can achieve a great deal in isolation. The genealogy of all the endangered animals at each zoo is listed on a computer programme — neatly called NOAH — National On-Line Animal Husbandry — using software, equally aptly called ARKS — Animal Record Keeping System!

Animals are exchanged between zoos, with no money changing hands, in order that unrelated animals can be introduced for the best possible breeding potential.

An example of this inter-zoo co-operation is our group of elephants. Just four years ago, Chester had three Asian elephants, including Jubilee, the first Asian elephant to be born and reared in the UK. Very few UK zoos have bull elephants, as they require very specialised keeping care and accommodation.

Today we have a second young bull, Chang, who came to us from a zoo in Denmark, and four more females have come from other UK zoos, in the hope that we may again breed these magnificent creatures.

NORTH WEST & NORTH WALES WILDLIFE MAP



BOWERS OF FORMBY

PROUD TO BAKE ZOO ELEPHANT CAKES

07048 72688

LOCAL FEDERATION MEMBERS WORK TOGETHER

MEMBERS of the National Federation of Zoological Gardens of Great Britain and Ireland work closely together. Visit our neighbours — each makes a special contribution to conservation:

WELSH MOUNTAIN ZOO
Colwyn Bay, Clwyd L28 5UY.
Tel. 0492-532938/531660

KNOWSLEY SAFARI PARK
Prescot, Merseyside L34 4AN
Tel. 051-430 9009

THE WILDFOWL TRUST
Martin Mere, Ormskirk, Lancs.
Tel. 0704 896181

BLACKPOOL ZOOLOGICAL GARDENS
East Drive, Blackpool, Lancs FY3 8PP
Tel. 0253 65027

SOUTHPORT ZOO
Princess Park, Southport, Merseyside PR8 1RX
Tel. 0704 38102

REINHARDT'S

THE HORN OF A DILEMMA

18 DECEMBER 1991
20 SEPTEMBER 1992

LIVERPOOL MUSEUM
William Brown Street, Liverpool

MONDAY to SATURDAY 10am-5pm
SUNDAY 12noon-5pm

WELSH MOUNTAIN ZOO

COLWYN BAY

"A Great Day Out" — Sunday Express Magazine

See for yourself the fascinating **CHIMP ENCOUNTER** at **CHIMPANZEE WORLD** and meet the Zoo's friendliest animals in the **CHILDREN'S FARM**

FALCONRY AND SEA-LION DISPLAYS

JUNGLE ADVENTURELAND AND TARZAN TRAIL

Activity Area

- SPECTACULAR SCENERY
- WOODLAND NATURE TRAILS

HALF PRICE FOR CHILDREN AND OAPs

Restaurant · Bistro/Bar · Barbeques · Picnic Areas

As seen on "WISH YOU WERE HERE" and "THE REALLY WILD SHOW"

☆ FREE MINI-BUS SERVICE ☆
FROM COLWYN BAY STATION

Open all year round

Telephone (0492) 532938

SOUTHPORT ZOO

AND CONSERVATION TRUST

AND AQUARIUM

PRINCES PARK,
Near PLEASURELAND

Telephone: (0704) 538102

★ SET IN LANDSCAPED GARDENS ★

SNACK BAR WITH INSIDE & OUTSIDE SEATING

PICNIC AREA

SOUVENIR GIFT SHOP

ZOO IS OPEN ALL YEAR ROUND FROM 10.00am (Except Christmas Day)

PARTY RATES FOR 25 IN NUMBER

SPECIAL EDUCATIONAL PROGRAMS FOR SCHOOLS

NO EXTRA CHARGE FOR

Parrot House, Aquarium, Reptile House and Pets' Corner
Lions, Ocelot, Lynx, Servals, Leopard Cats, Coatimundis, Otters, Binturongs, Chimpanzees, Gibbons, Mandrill Baboons, Spider Monkeys, Squirrel Monkeys, Capuchins, Marmosets, Wallaby, Liamas, Giant Tortoises, Snapping Turtles, Snakes, Alligators, Spiders, Penguins, Flamingos, Parrots, Owls.

ALL PATHWAYS ARE SUITABLE FOR WHEELCHAIRS

HOSPITAL PATIENTS SPECIAL RATES

Photo by
Cliff Brett, Daily Post

HELP!— These birds were stolen from the zoo in February 1992 as we went to press. If you have any information, contact your local police or Chester Zoo on 0244 380280.



PAM'S PARROTS

you need a lot of dedication to be a zoo-keeper's wife! Pam Pilgrim, wife of the zoo's Avicultural Deputy Mrk, finds her hands full when Mark brings his work home. These three Hawk-headed parrots were hand-reared by Pam and Mark at their home, close to the zoo. Her only worry is that their 4-month old son Ryan will copy the parrots' squawks before he learns to say Da Da!

Welcome to Chester

DR Gordon McGregor Reid has been appointed to the new post of Curator in Chief at Chester Zoo.

Gordon is a zoologist graduate and spent some years at what is now the Merseyside Museum.

Before joining the zoo, he was at the Horniman Museum in South London, and has spent a lot of time researching wild animal population trends in Africa.

Recently the World Wide Fund for Nature engaged his services as a Consultant Hydrobiologist to the Korup Rainforest Park Project, in Cameroon — a model scheme for nature conservation. Gordon spent three months living in the heart of the rainforest, studying the ecology of the streams and rivers which flow there.



Dr Gordon McGregor Reid, new Curator-in-Chief at Chester Zoo, getting to grips with a wallaby!

Rhinos come to Liverpool



Rhinoceros — The Horn of a Dilemma.

Learn more about the plight of the rhinoceros at an exciting exhibition throughout the Summer at the Liverpool Museum. All rhinos are under threat from poaching and the destruction of their habitats. This exhibition reinforces the need for rhinoceros conservation and aims to inform visitors of their plight, and generate empathy for them.

On display are specimens and full size replicas which demonstrate the awesomeness of these amazing creatures. There's a lively programme of activities and events, including Saturday talks for families with children of all ages. Further details by phoning 051 207 0001. Ext 211/296.

TAKE A TAPE

YOU will get a lot more out of your zoo visit if you take a guided tour — and there is usually one of our trained volunteers available to take you. But if you want to take a tour at your own pace, and take all day long if you wish — then pick up one of our audio tapes at the information kiosk.

Nick Davies, who presents many of radio and television's wild life programmes, has written and recorded a lively, information guide to the zoo, which you can hire for just £1. Walkman-type players are available for a full refundable deposit.



A WONDERFUL WORLD OF FREEDOM

On A58 Prescott by-pass exit 2 off M57.

Enjoy a 5 mile safari through 450 acres of historic parkland containing large groups of lions, tigers, monkeys, elephants, wildebeest, buffalo, rhino, zebra, camels and many others.

View all the animals from the comfort of your car in their spacious and natural surroundings.

Also sealion shows, amusement park, pets corner, reptile house, souvenir shops, cafeteria, picnic areas, large car/coach parks, disabled facilities.

Game reserves open daily from 10am-4pm 1st March-31st October

KNOWSLEY SAFARI PARK

Prescot, Merseyside L34 4AN.
Telephone: 051-430 9009

NOW DRIVE THROUGH THE CONWY TUNNEL AND WALK THROUGH A SHIPWRECK AT Anglesey Sea Zoo

Most comprehensive aquarium in Wales showing huge collection of marine life in natural seascapes. Walk through a wreck! See fierce conger eels! Crashing wave room! Pick up sealife from touch tanks, steer radio controlled boats. Fire an aquablaster. Children's adventure trail. Licensed restaurant. Gift shop. All weather fun attraction. Awarded gold medal for services to tourism in Wales 1989.

Open Every Day for Most of the Year!



THE EXCITING 'BIG FISH FOREST' IS NOW OPEN!!

Anglesey Sea Zoo, Brynisiencyn, Anglesey, Gwynedd LL61 6TQ
Telephone: (0248) 430411
Fax: (0248) 430213



COME BEAK TO BEAK AT MARTIN MERE

Meet thousands of friendly ducks, geese and swans at the Wildfowl and Wetlands Centre. Feed peckish Flamingos, rare Ne Ne Geese and exotic Mandarin Ducks by hand, wander through peaceful Waterfowl Gardens. Picnic beside lakes, ponds and waterways awash with fluffy ducklings or see the winter spectacle of thousands of wild migrant swans feeding just a few feet away.

Martin Mere is a wonderful day out all year long with children's play area, luxurious heated birdwatching hide, gift shop, Pinkfoot Pantry, art gallery, picnic areas, free parking, brass rubbing centre, children's activities and guided walks at weekends.

Disabled access and FREE wheelchairs are available on request. As well as having a great day out, you'll go home knowing that your visit has contributed to the conservation of the world's waterfowl and their natural habitat — the wetlands.

CZN 1992

THE WILDFOWL & WETLANDS TRUST



CHILDREN FREE!

This voucher admits one child FREE with a paying adult. One child per voucher only.

VALID AT: MARTIN MERE

Directions: Located 6 miles from Ormskirk, 10 miles from Southport. Signposted from M61, M58 and M6, off A59. Bus service 3 from Ormskirk every 2 hours; ring (0704) 895181 for details.

The BOAT MUSEUM

Jtn. 9 M5

Tel: 051-355 5017

Set within the historic dock complex, the Museum has the world's largest floating collection of canal craft. With steam engines, workers' cottages, blacksmith's forge, stables, boat trips and large indoor exhibitions. Conference centre, cafe, shop, free parking.



MEMBERS OF THE FAVOURITE DAYS OUT CONSORTIUM



Above: Boat Museum.
Far right: Ness Botanic Garden.
Right: Jodrell Bank.



11 GREAT DAYS OUT ASK FOR YOUR FREE LEAFLET

CHESTER Zoo is a member of the "Favourite Days Out" group of tourist attractions in the region, offering family enjoyment to all ages.

There's the Cheshire Candle Workshops, where you can try your hand at candle carving, and shop for unique gifts in the extensive craft workshops; The Boat Museum, at Ellesmere Port, with the world's largest floating collection of canal craft; Ness Gardens, a 62 acre collection of specimen trees and shrubs; Arley Hall, a stately home set in one of England's finest gardens; Stapeley Water Gardens and the Palms — a tropical oasis with sharks and giant waterlilies; Tatton Park, the National Trust's most popular property, and England's most complete country estate; Jodrell Bank, with the famous 76m Lovell Radio telescope, science centre and arboretum; Bridgemere Garden World — 25 acres that is so much more than just a superb garden centre; Cross the border into North Wales, for two more National Trust properties — Erddig Hall, a late 17th century house, with most of its original furniture,

and Chirk Castle, a Marcher Fortress with superb Adam-style furniture.

The Chester Visitor Centre will provide information on all these and many other attractions in the area, and the centre is also the home of the Victorian Experience, where visitors can take in the sights, sounds and smells of a Victorian Street in 1897.

MORE STARS THAN HOLLYWOOD MORE SPACE THAN YOU COULD IMAGINE

Get to know all the big name stars, get physical — with hands-on science exhibits — get close to the second largest fully steerable radio telescope in the world, then get away from it all in our stunning, nationally acclaimed arboretum.

Jodrell's got everything from plants to planetarium.

Visit our Countryside Cafe.
Good fresh food — all day
at down-to-earth prices.

OPEN 7 DAYS
Summer: From Easter to 31st Oct.
10.30am — 5.30pm

Winter: Open Weekends Only
12 noon — 5pm Nov. to Easter

PLUS TWO
FASCINATING
NEW
EXHIBITS



Jodrell Bank
SCIENCE CENTRE & ARBORETUM
MACCLESFIELD, CHESHIRE
TEL 0477 71339



Arley Hall

ARLEY is set deep in the North Cheshire countryside, and has been the home of the Warburton family for over 500 years. The house has superb panelling, a magnificent library and historic family furniture and paintings. There are twelve acres of award winning gardens, which rank with the best in Britain, featuring herbaceous borders, shrub roses, a walled garden and herb, scented and woodland gardens.

Ness Gardens

NESS is known as a "beautiful learning garden". It is the botanical garden of Liverpool University, and makes idyllic surroundings for a family picnic, and a fascinating place of discovery for the more serious botanist. Visit a Rhododendron time for a breathtaking riot of colour.

1. Ness Botanic Gardens051-336 2135
2. Stapeley Water Gardens0270 623868
The Palms 0270 628628
3. Chirk Castle0691 777701
4. Erddig Hall.....0978 355314
5. Chester Visitor Centre, Vicar Lane,
Chester.....0244 351609
6. The Boat Museum, Ellesmere Port.....051-355 5017
7. Cheshire Workshops, Burwaldsley ..0828 70401
8. Bridgemere Garden World09365 381/2
9. Tatton Park, Knutsford0565 54822
10. Arley Hall & Gardens056 585 353
11. Jodrell Bank Science Centre0477 71571
12. Chester Zoo0244 380280

A Great Day Out For All The Family

Surrounded By Medieval Castles
In The Heart Of Cheshire,

Enjoy Our Many Attractions



- Candle dipping & Hand Carving Demonstrations
 - Glass artist
 - Hand Crafted Costume Jewellery
 - Video Craft Theatre
 - Children's Play Area
 - An Aladdin's Cave of Craft, Gift & home ideas
- All this and so much more

Fully licensed Restaurant for light snacks
and refreshment or main meals

FREE ADMISSION • FREE PARKING

**Cheshire
Workshops**
THE CANDLE MAKERS



Burwaldsley, Near Chester Telephone (0829) 70401



Bridgemere Garden World

Twenty-five acres of fascinating plants and garden with more plants and more varieties than anywhere in Europe. Huge selection of houseplants, garden bookshop, coffee house — recommended by Egon Ronay. Open daily. Admission free but charge for Garden Kingdom. On A51 between Woore and Nantwich, 25 miles from Chester. Tel. (09365) 381/2, also visit our Wildlife Park — from 10am (09365 223).

THE NATIONAL TRUST
YR YMDDIRIEDOLAETH GENEDLAETHOL

CHIRK CASTLE

Nr. Wrexham,
Clwyd LL14 5AF
Tel: (0691) 777701

CHIRK is a magnificent Marcher fortress commanding spectacular views over the surrounding countryside. The Castle has beautiful gardens with topiary and woodland. The roses, yews, flowering trees and shrubs give beauty and fragrance throughout the Spring and Summer. See the gloomy dungeon for a grim reminder of the Castle's turbulent history.

For further information on these or any other properties in North Wales, contact Public Affairs Manager, The National Trust, Trinity Square, Llandudno, Gwynedd, LL30 2DE. Tel: (0492) 860123.



STAYING CHESTER?

FREE ACCOMMODATION BOOKING SERVICE ³

Tel: (0244) 351609
Fax: (0244) 319819

CHESTER VISITOR CENTRE

By the Roman Amphitheatre
TOURIST INFORMATION CENTRE
Books, Maps, Guides, Tours, Travel

Stapeley Water Gardens ²



Attractions at Stapeley include:-
THE PALMS TROPICAL OASIS

See it to believe it! A 1 1/2 acre paradise of exotic palm trees, flowering plants and the magnificent Italian Garden. Carefully recreated natural environments house piranhas, sharks, reptiles, Moray eels, huge Koi carp and colourful parrots. Enjoy a snack or a full meal in one of our restaurants.

WORLDS LARGEST WATER GARDEN CENTRE

There's something for everyone, from Trees, Shrubs, house plants in profusion with expert courteous advice available — even two covered acres of garden equipment, tools, furniture, gifts, seeds and flower arrangers supplies.

THE STAPELEY YESTERYEAR COLLECTION

Wander back in time through the early decades of the 20th Century to see fully restored military, vintage cars a Churchill MKVIII Tank, Dinky Toys and much more.

Stapeley Water Gardens, London Road, Nantwich, Cheshire.

Tel: 0270 623868 The Palms Tel: 0270 628628

1 mile South of Nantwich, on the A51 to Stone.
Signed post from Junction 16 on the M6.



JUNIORS MEET THE ANIMALS

JUNIORS DO IT ALL
Field Trips and Meetings all Year Round

CHESTER Zoo's Junior Members have a very active club life!

Junior Club leader Mrs Penny Rudd organises field trips to other zoos and areas of wild life, and a series of meetings in the zoo which include a day helping a keeper with food preparation and cleaning; a day going into the animal enclosures — when the lions and tigers are not in — taking plaster casts of animal footprints; a "touch session", when members get the chance to meet some of the

zoo's friendlier inhabitants at close quarters; barbecues, social events and lots more.

FREE ENTRY

Juniors' membership cards give them free entry into the zoo for a whole year, plus all the other benefits of membership. Ring the membership office for details — it's great for every youngster who loves animals, and wants to know more about the world's diminishing wildlife. 0244 380280.

ADOPT US!

COULD you be an Auntie to an alligator?

Or Daddy to a douracouli? Our animal adoption scheme is a great way of becoming involved with the zoo's conservation programme, and an adoption makes a most unusual gift!

Adoption starts at £30.00 a share, and in return the adopter receives complimentary tickets, an adoption certificate, copies of the zoo's quarterly magazine, Chester Zoo Life, invitations to annual Adopter Days, and their name is included on the plaque by the appropriate enclosure.

All the money raised goes towards the quarter million pound annual food bill for our animals. Ring Maureen or Nell in the Adoptions Office on Chester 380280 for an adoption form.

DISCOVER TATTON park

A VIVID EXPERIENCE OF LIFE THROUGH THE CENTURIES

Set in 1,000 acres of breathtaking grounds, Tatton Park brings to life a past stretching back to the 1400's. From medieval Hall to opulent Mansion, Japanese and Italian gardens to the working 1930's Home Farm, Tatton Park is an unforgettable day out. Don't miss our brand new children's playground, excellent restaurant and picnic facilities. ⁹

Tatton Park, Knutsford, Cheshire (0565) 654822
Signed post from M6 (Junct 19) and M56 (Junct 7)

YOU TOO CAN HAVE GARDENS LIKE OURS

With the **FINEST ELEPHANT MANURE** (ZOO POO)

£2.00 PER BAG
TWO FOR... £3.00

ASK THE KEEPERS AT THE ELEPHANT HOUSE

SPECIAL GIFT PACKS WITH CERTIFICATE OF AUTHENTICITY!

Carlsberg

Elephant

NATURALLY — ON SALE IN THE ACORN BAR

Probably the best lager in the world.



ENJOY
Greenhalgh's
QUALITY SAVOURIES
IN THE JUBILEE
& OASIS

50p OFF
CHESTER ZOO ADMISSION
from
Merseybus

SUNDAY SERVICES 11C & 12C
LIVERPOOL to CHESTER CITY CENTRE & ZOO

A MONEY-SAVING Offer to Merseybus passengers — bring your Merseybus ticket purchased on services 11C or 12C and save 50p* off adult admission price.

*or 25p off Child/O.A.P. admission - issued subject to published conditions.

Catch the new 11C or 12C services at Albert Dock Entrance at the stop on Wapping - first bus 09.22 then every half-hour. SUNDAYS ONLY

MERSEYBUS INFORMATION:
051 254 1616

OR SEND FOR YOUR FREE
TIMETABLES TO:

MERSEYBUS MARKETING DEPT.,
EDGE LANE, LIVERPOOL L7 9LL.



SEA CREATURES FROM THE FERRIES!

Take a soft-sailing cruise on the famous "Ferry" across the Mersey, visit a host of Mersey Sea Creatures at the Seacombe Submarine Aquarium, and then let your "Creatures" enjoy feeding time at Wanchuan Cafe or Seacombe Restaurant. Birthday parties are also available.

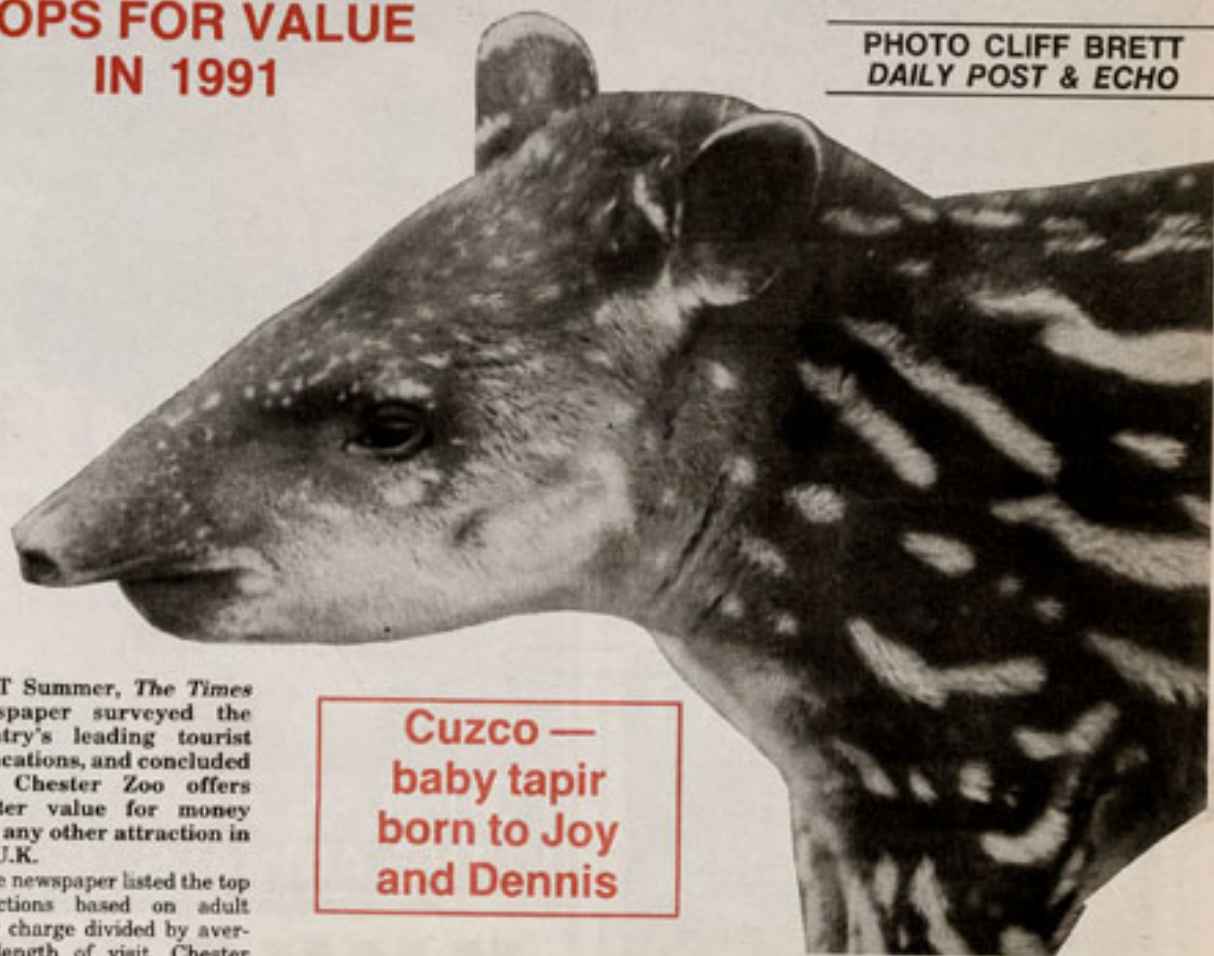
MERSEY FERRIES

For further information contact: Mersey Ferries, Victoria Place, Seacombe, Wirral, L44 6DY
Telephone: 051 638 1830 24 Hour Timetable Information Line: 051 236 1776

ZOO IS VOTED U.K.'S BEST VALUE

TOP PEOPLE'S PAPER NAMES CHESTER ZOO AS TOPS FOR VALUE IN 1991

PHOTO CLIFF BRETT
DAILY POST & ECHO



Cuzco — baby tapir born to Joy and Dennis

LAST Summer, *The Times* newspaper surveyed the country's leading tourist attractions, and concluded that Chester Zoo offers greater value for money than any other attraction in the U.K.

The newspaper listed the top attractions based on adult entry charge divided by average length of visit. Chester Zoo, with an average cost per hour of £1.15 topped the list. You really do need to plan a full day here — there is so much to see!

Ti Settles Well

Good mates with Chang

NOW this really could be the start of something big! In the Autumn, Thi Hi Way, a 9 year old female Asian elephant arrived from London Zoo, to join the group on our island.

She and the young bull Chang — also nine — hit it off right away, and are now rather more than just good friends! However, with a gestation period of nearly two years, it could be a while before we hear the thump of not-so-tiny feet!



CHILDREN'S BIRTHDAY PARTIES AT THE ZOO
WITH A SPECIAL CAKE
Call Lynn or Lesley on
0244 380280

TUCK INTO THE BIG TASTE

JACKETS WITH TOPPINGS

HOT DOGS

SUPPLIED BY
WESTLER FOODS
EATING SUCCESS

AVAILABLE IN THE ZOO

GTM WHOLESALE
WHOLESALE TOBACCONISTS & WHOLESALE

"The Company that puts the Whole Service into Wholesaling"

Telephone: Oswestry (0691) 659949
WE ARE PROUD TO SUPPLY CHESTER ZOO

SUPPLIERS OF CONFECTIONERY AND MINERALS TO RETAILERS, SCHOOLS, COLLEGES AND THE CATERING TRADE

FREE DELIVERIES TO YOUR DOOR

EMMA'S ALBUM
SOME HIGHLIGHTS OF
A FIRST YEAR



That's my girl! Esther proudly presents her two-day old daughter. Sadly, Esther was unable to produce enough milk to feed her baby, and so the keepers took in turn to sleep in the rhino house, and bottle feed her every two hours.



Go on — give us a kiss! Emma knows where her next meal is coming from and shows her appreciation with a kiss for Keeper Julian Buffery.



Emma's bosom companion is Jessica, a Vietnamese pot-bellied pig. In the early days of their friendship, Jessica was the bigger, but Emma has rapidly overtaken her.



At nine months old, Emma is getting to be quite a big girl, but she still has a close relationship with her caring keepers.



Colour me — win great prizes says Stampa

Here is a great competition open to all children who are under 14 on 31st October, 1992. Simply colour the picture of Stampa using crayon, felt tips, paint or pencil (remember to check your felt tip to see if it runs on newspaper).

Each month from April to October 1992 we will award prizes of a pair of Stampa shoes (children's sizes 6-2) and a Chester Zoo Family Ticket (worth £17) to the best entries received in that month. All monthly prize winners will be re-judged after 31st October 1992. The best will win a £250 voucher to spend at Hamley's world famous toy shop in Regent Street in London (plus return railway fare for two from any UK mainline railway station).

RULES

(1). Enter on the outline above or on photocopy. One entry per child. Entries will be judged in their month of receipt. Last date for receipt is Friday 30th October 1992.

(2). Entrants must be under 14 on 31st October 1992, giving age and shoe size on the entry form. Age will be taken into account in judging.

(3). Prizes will be awarded each month to entries received in that month and all winners will be re-judged for the grand prize of the Hamley's £250 voucher and travel for two from any UK mainline railway station to London to use the voucher. There is no cash alternative.

(4). Relatives of staff at Chester Zoo/Dunlop Footware are not eligible. By entering, you agree to these rules. Entries can be returned if you send an SAE. The judges' decision will be final and all winners will be notified by post.

Entry Form

Name.....

Address.....

Age.....Shoe Size..... Postcode.....

Post to Stampa, Chester Zoo, Chester CH2 1LH

ROUNDABOUT

THE FIRST new British Standard 5750 accreditation for the catering industry has been awarded to Cearn's and Brown — a company that has been keeping standards high for 126 years!

They have a range of over 5,000 products, and represent the U.K.'s most efficient one-stop shopping concept for professional caterers. Fresh dairy products and provisions, canned goods, groceries, wines and spirits, disposables and hygiene products — all this, plus their own Country Range brand offers the best possible value.

Cearn's and Brown are proud to be associated with Chester Zoo. Details: 0928 712345.

SOUTHPORT ZOO is family run and has been completely rebuilt by Doug and Carole Petrie since 1964.

Discover for yourself a place of interest, excitement, and enjoy looking at all the well known animals, and many other unusual and beautiful ones you may never have seen before.

What makes this community so unique is its population. It is the home of over 800 animals from around the world, living and breeding in family groups. Many are endangered in the wild, and through co-operation with other zoos in establishing captive breeding programmes, provides a conservation measure, which ultimately will provide the final barrier from extinction. Details: 0704 538102.

THE Big Fish Forest at Anglesey Sea Zoo will give you the feeling of being in a kelp seaweed world under the seas around her island.

The biggest aquarium tank in Wales, bigger than many swimming pools, has the largest piece of curved acrylic in Britain — to make you feel you are right inside the sub-marine world. The window cleaner has to wear a wet suit and work from a boat inside the tank!

So walk past the wave tank, over the mullet pool and stand beside the waterfall to experience the kelp forest! Details: 0248 430411

Mars



OFFICIAL SNACK
FOOD OF THE
BRITISH OLYMPIC
TEAM!

SMITHS

THEY'RE CURLY
Quavers
FROM ALL ZOO KIOSKS



**CHEESE FLAVOUR
CURLY POTATO SNACK**



Chester Zoo News



CROESO I SW CAER

Mae'n bleser gennym eich croesawu'n gynnes i Sw Caer a'i gerddi hardd, eang sydd wedi cipio sawl gwobr dros y blynyddoedd. Cewch weld dros 545 rhywogaeth o anifeillaid yma.



Emma would certainly have died if she had been born in the wild. But she is no weakling — by the end of 1990's she should be a mother herself.

MY HOW YOU HAVE GROWN

Zoo's keepers and vets saved Emma's life

WHEN Emma was born on 27th February last year, she was weighed just 26kg — very much less than the normal birth weight of between 40-50 kg.

Esther was attentive mother, although like many animals who are first time mothers, she sometimes seemed a little confused.

But her milk dried up after three days, and the baby was not thriving at all. So the keepers decided to bottle feed, and within two months she had doubled her birth weight. By her first birthday, she weighed in at 280 kg.

TIDY ZOOS ARE GOOD NEWS

Our thanks to Dunlop

LAST year, Dunlop Footwear generously adopted our Black rhinos, on behalf of their Stampa range for children, which features a rhino on the packaging. They certainly got value for money, because they adopted two rhinos — and within a few days, baby Emma arrived, so they got three for the price of two!

The zoo staff, and Emma are very grateful to Dunlop for their continued support and sponsorship.



OPEN FROM 10AM DAILY



Choose Stampa BY DUNLOP

Fun, reliable footwear for active kids

ALL young adventurers need fashionable footwear for their missions — and their mums need to know that young growing feet are being expertly cared for.

Dunlop's Stampa needs both — stylish little shoes that take a lot of beating. Hardwearing footwear, and fun packaging, plus co-ordinated back-packs and waist bag accessories.

Youngsters will love the style — mum will love the quality.

SCOTT JUMPS FOR JOY

EIGHT year old Scott Green from Crosby, Merseyside has every reason to jump for joy as he returned to Liverpool after a very special shopping spree in London. As first prize winner of the 1991 'Stampa' children's footwear colouring competition, sponsored by Dunlop with Chester Zoo, he had £250 to spend on toys at Hamleys.

Designed to appeal to both youngsters and their mothers, the 'Stampa' range is positioned as reliable, fun footwear for intrepid explorers.

Synonymous with the shoes Rhino logo, Dunlop adopted 'Esther' and 'Parky' last year. Wishing to continue their support, Dunlop have agreed to sponsor the entire family for a further year.

See page 15 for your chance to win in 1992!



EMMA'S STICKER

LOOK out for the zoo's new car sticker, which features Emma the Black rhino. It was designed by one of our retail staff, Nick Taylor, with Retail Sales Manager Alan Jones. On sale in the zoo's shops for just 40 pence.

Stampa's Colouring Competition see page 15



The Zebra badge of the Federation of Zoological Gardens of Great Britain and Ireland links all major zoos in their efforts to conserve endangered animals.

Chester was a founder member.

Chester Zoo News is published by The North of England Zoological Society, Chester. Designed and devised by the Zoo Marketing Department. Grateful thanks to advertisers for their support.

Typesetting and make-up by Quilsett of Bolton. Printed by Widnes Commercial Printing Limited, Widnes, Cheshire. Photos by Zoo Staff unless otherwise acknowledged.



(0244) 380280